



Great Design,
for Everyone



Dealer catalogue

made in
france

INVICTA

Summary

- 4** Invicta, European leader in wood burning stoves.
- 6** Beautiful design.
- 8** Choose your fuel wisely.
- 10** Choose your Invicta appliance wisely.

- 11** Technical features
- 12** Take full advantage of your stove.
- 14** Plug-IN.
- 22** Woodburners.

- 60** Inset stoves.
- 76** Cassette stoves.
- 81** Accessories.
- 82** Comparative tables.



Invicta, European leader in wood burners

Guaranteed French-origin cast iron



Invicta's foundry and enamelling plant was established in 1924 in Donchery, in the Champagne-Ardenne region of France. With an annual production of 115,000 wood burning stoves, the group is number one in Europe. Invicta controls the entire manufacturing process internally: Research & Design, COFRAC accredited test laboratory (Accreditation n° 1-1658 available on www.cofrac.fr), Foundry, Enamelling, Marketing & Distribution. The cast-iron woodburners, inset stoves and cassette stoves manufactured by Invicta are certified Origine France Garantie (Bureau Veritas, certificate of conformity N° 7208672).

The benchmark brand



Over the years and through its original and creative communication campaigns, Invicta has become the benchmark brand in the wood-burning stove sector. It offers a wide range of products and services, enabling everyone to find a heating solution that meets their expectations in terms of experience, design, comfort and performance. Invicta is therefore the ideal partner for warm moments.

A wide range of expertise

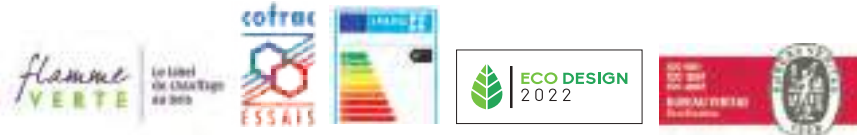
Invicta's know-how extends to multiple sectors: woodburners, hybrid freestanding stoves, pellet stoves, inset stoves and cassette stoves, but also barbecues, culinary pottery, decorative items and furniture.

*MSI study/April 2015

Research and innovation

Optimising, innovating and revolutionising are the three watchwords at Invicta's R&D division. Some innovations conceived by Invicta, like the post combustion system and reverse combustion, have greatly contributed to the optimisation of energy performance. Others, such as the Air-control technology, improve the user experience by providing better control of the burn rate. Day after day our R&D team keeps on developing eco-friendly products to care more for you.

An ecofriendly approach



Invicta constantly improves the energy performance of its wood burners, set in motion by creation of the french Flamme verte label. The 7 star rating established in January 2015 encourages companies to manufacture environmentally friendly products.

Our laboratory, COFRAC certified, conducts systematic quantitative tests (performance, CO rate, dust concentration) on new models. All of Invicta's wood burners carry the European Eco Label A or A+*. Many are already compatible with European Eco-Design 2022 standards. Most of our products are Flamme verte 7 stars. Invicta's ISO 14001 certification is our commitment to protect the environment.

Partner of Ademe www.ademe.fr/en



Initiated by ADEME, a programme to study and measure emissions generated by the use of biomass, was established to evaluate the nature and quantity of gaseous pollutants, as well as their particle size and residual particle distribution. This programme aims to improve combustion involving scientists from the Management of Risk and the Environment Laboratory of the University of Haute-Alsace and Invicta. This research is part of the Invicta DNA, and therefore Invicta's Research and Development team is very dedicated.

and Development team is very dedicated.

*except 700 optimise ref 6771-74 : Ecolabel B



Great Design, for Everyone.

Known as trend-setter, Invieta revisited wood burning stoves and inset stoves, developing new, cleaner product lines bringing you design, with a modern twist. This vision combines sleek design with affordability, perfectly in tune with time. Invieta's approach is part of what has come to be known as «democratic design».

This approach is based on five pillars:

Form : it is the quality of the line, the sketch, that makes the stove a complete aesthetic object. It adds style to any home. The stove becomes the heart of the home, and the central decorative element. This is obviously the most common meaning of the word design.

Function: Invieta stoves and inset stoves are perfectly designed, not only in its aesthetic dimensions, but also in its functionality. Performance, efficiency and usability are guaranteed. And they're

ergonomic, that is to say, optimised for a natural and intuitive use.

Quality : while remaining accessible, Invieta wood burning stoves and inset stoves have a level of quality that is recognized worldwide. They are made in France, in the Ardennes. The quality level is controlled at every stage to achieve the hardest standards.

Sustainability : from stove's conception, Invieta designers never lose sight of the sustainability of the appliance throughout its life cycle. The materials are recyclable, and the fuel is the most abundant source of renewable energy in France. Durability is an integral part of the design.

And evidently the price.

Heat control

For almost a century, Invicta has been learning every day how to better tame the heat.

First of all, this involves optimising the wood burning chamber: the ideal proportions are passed down by Iron-masters through word of mouth. Invicta engineers and designers set about refining them continually, adapting to new forms while improving the performance and heating power of their stoves.

This involves research into combustion: the type of fuel, optimisation of air circuits, analysis of emitted gases, study of their residues and further technological innovations (post-combustion, reverse combustion, Air-Control, hybrid log and pellet stoves).

The advanced management of heat was born in our foundry, with cast-iron's outstanding properties: excellent thermal conductivity, remarkable inertia. It will hold and distribute heat radiantly and consistently. It withstands extreme temperatures and heat distortion. And last, but certainly not least: our stoves are 100% recyclable.



**For Invicta,
design is only
meaningful if it is
accessible to the
greatest number
of people.**

This has been our vocation for decades. Invicta is committed every day to making this dream possible, so that everyone can afford the best in design and performance. With this philosophy, Invicta Group has become the European leader in wood burning stoves*.

Whatever your budget may be, you will find an INVICTA stove with great design and high performance, that will bring you enjoyment everyday.

*MSI study/April 2015.

CHOOSE your fuel wisely



You have decided to purchase a wood burner that combines affordability, environmental aspects and performance. But, the question remains «which fuel, and therefore, which stove, best meets your heating needs, logs or pellets?» Here is a comparison of the two families of stoves to help you choose the most suitable.



Pellet stoves: performance and practicality

□ **Ambience**

With their large capacity hoppers, pellet stoves do not require regular supply. In addition, they are programmable and certain models are even remotely controllable.

□ **Constant comfort**

Simple to use, they produce a soft and constant heat over a long period, without any effort on your part to keep the flame burning. Pellet stove technology combines efficiency and practicality, bringing you freedom and flexibility.

□ **Fuel quality**

Pellets are composed of sawdust and wood shavings make an excellent fuel. With their high energy performance, they produce an efficient and comfortable heat.



□ **High efficiency**

By achieving from 80% to over 90% efficiency, pellet stoves generally outperform traditional log systems. They have been awarded the French efficiency label 'Flamme Verte'. Their ambience is also superior. Some Invicta models, with a 22 kg reserve capacity, allow you to enjoy the heat for up to 36 hours, without refilling.

□ **Higher initial price and running costs**

The initial investment is higher for a pellet stove. In addition, pellet fuel is more expensive than wood logs.



Wood-burning stoves: economy, aesthetics and user-friendliness



□ Ambience

True family favourites, wood burning stoves continue to seduce thanks to the sublime spectacle of fire they offer to your eyes. A contemporary object of design and pleasure, Invicta woodburners, inset stoves and cassette stoves fit into any type of interior, and are available in a variety of shapes for an ever-warming atmosphere. Silent, the woodburners and inset stoves work by natural convection, letting you enjoy the crackling sound of the fire.

□ Competitive price

Wood burning stoves logs as fuel, which is cheaper as it is more widespread and available than pellets. In terms of cost per use, they are therefore the most competitive on the market. Meeting the requirements of the 'Flamme Verte' label, wood burning stoves guarantee a quality energy efficiency of up to 80%. It should be noted that these appliances diffuse heat quickly and do not require electricity to operate.

□ A variety of log sizes

Depending on their dimensions, the Invicta wood-burning stoves can accommodate different log lengths from 25 to 94 cm. However, for optimum performance, it is best to use smaller logs. Two 25 cm logs will have a higher calorific value than a 50 cm log.

□ Autonomy

Unlike pellet stoves, their autonomy is limited to a few hours without human intervention. There is a «prolonged combustion» or «continuous fire» mode that allows the appliance to be easily restarted after several hours.

□ Authenticity

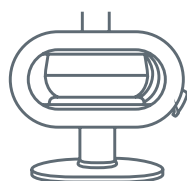
If you are looking for a unique and intense experience, the log stove is for you. As long as you don't mind rekindling the flame from time to time!

To sum up...	LOGS	PELLETS
Appliance cost	🔥/🔥🔥	🔥🔥🔥
Cost of fuel	🔥	🔥🔥
Maintenance costs	🔥	🔥🔥
Efficiency	🔥🔥	🔥🔥🔥
Autonomy	🔥🔥	🔥🔥🔥
Ease of use	🔥🔥	🔥🔥🔥
Beauty of the flame	🔥🔥🔥	🔥🔥

INVICTA HAS A SOLUTION FOR THE INDECISIVE!

Become the master of fire by choosing both fuels! Invicta offers you a range of products that combine the advantages of both fuels: hybrid woodburners (AKIMIX, CAROLO MIX and ARATOS PLUG-IN Hybrid). With a pellet autonomy of 12 to 17 hours and a burning area that can accommodate logs up to 40 cm, you will be free to choose between an autonomous heating mode and the conviviality of a wood fire.

CHOOSE your Invicta appliance wisely



1 The Design

Contemporary, vintage, rectangular, oval, original, traditional, anthracite, ivory or bright red enamel... Choosing an Invicta wood-burning appliance is, above all, a matter of love at first sight. One thing is certain; this decorative element will not go unnoticed in your living room. So, let your eyes guide you, and your 'interior designer' soul reveal itself!



2 Performance

Invicta stoves, inset stoves and cassette stoves offer a wide range of thermal performance. In this catalogue, we have focused on the heating surface, the optimum output and the power range. These features will help you to make your choice of your ideal stove. The 7-star Flamme Verte rating will guide you towards the most efficient and environmentally friendly stoves.



3 Sizing and installation

A good wood burning appliance is, above all, a stove, fireplace or insert perfectly adapted to your needs. Don't hesitate to call on a professional stove installer. He will help you to define the ideal product according to the heating volume, insulation and configuration of your home... He will determine the ideal location according to the flue pipe, the size of the appliance and the safety distances to be respected.



4 Price

Price is of course an important selection factor. When you set your budget, remember to take into account any government subsidies you may receive. And don't forget, an Invicta wood-burning stove doesn't change every 5 or 10 years, it's, above all, a long-term investment.



TECHNICAL FEATURES

POST
COMBUSTION

Post-combustion system

Injection of preheated air into the combustion chamber. The additional air supply from the rear allows the destruction of hydrocarbons at high temperatures, thus giving a complete combustion, resulting in reduced emissions.

SILENT
natural
convection

FULL
AUTO

Silent appliance

Appliance works by natural convection, without fan noise

Full Auto

Fully automatic and programmable appliance: automatic switching on and off, temperature regulation by thermostat.

CONNECTABLE
AIR-TIGHT

DIRECT
AIR-SUPPLY

AIR
CONTROL

DUCTABLE

Airtight and/or able to have an external air supply connection

The fresh air supply is centralised at the connection duct:

- no air intake from the room.
- It is possible to connect the stove directly to the outside air supply or crawl-space.

Air Control

Centralised manual adjustment of air distribution with single control:

- simple and balanced management of whole air distribution: primary, secondary and post-combustion
- better control of the fire pace : mini, normal and maximum
- control of wood-consumption
- cleaner, more efficient combustion
- a more even secondary air flow to keep the glass clean,
- a total interruption of the air flow in the event of a prolonged stoppage of the unit.

Ductable

Some of the warm air from the stove can be ducted to heat other rooms

100%
CAST
IRON

Cast
IRON-GLAD
Interior

VERMICULITE
Coating

CAST IRON
STEEL
HOUSING

Cast iron, the ideal material for heating

Cast iron, the traditional material of radiator and wood burner manufacturers, offers many ideal properties for heating:

- excellent thermal conductivity, a source of gentle heat,
- high inertia which stores heat and gradually releases it. Most inset stoves and many wood stoves in the Invicta range are 100% cast iron. The heating elements of the cassette stoves are made of cast iron, but covered with a steel fairing.
- Its durability and resistance to thermal distortion.
- Its excellent flowability (fluidity of the alloy), which gives the finished product a "peach skin" or velvety feel that's almost silky. Invicta's mastery of cast iron as a material allows us to offer many original, designer models.



Connected devices that can be remotely controlled

Equipped as an option, Invicta Plug-IN Auto pellet stoves can be remotely controlled via Wi-Fi. A room thermostat can also be connected to the terminal provided for this purpose on the electronic board of the appliance.

TAKE FULL ADVANTAGE of your stove

1 Use good quality fuel

Whether you use logs or pellets, you won't get the most out of your stove without a quality fuel. If it is unsuitable or of poor quality, the fuel will be the primary cause of issues with your appliance - reduced energy performance and more outside air pollution.

Logs

Suitable wood species

There are two main families of wood classified according to their density:

- > The hardwoods (oak, beech, ash, hornbeam, alder, maple, elm, walnut, fruit trees...)
- > The softwoods (spruce, fir, pine, larch) and soft deciduous (poplar, willow, birch, linden...)

Harder, denser hardwood logs with a higher calorific value are the most recommended for domestic stoves, with the exception of the chestnut log, which spits whilst burning.

Tender hardwoods and softwoods burn too quickly. Softwoods can also clog the flue and the appliance itself. For a brighter flame or to restart combustion, use lighter woods, such as poplar or willow, which burn faster.

Dry wood

The moisture content of the wood is an essential factor, Dry, ready-to-use wood (less than 20% moisture content in relation to the gross weight) and freshly cut wood (45% moisture content in relation to the gross weight), the energy released is halved! The more water the wood contains, the more energy it needs to evaporate and the less heat it produces.

Freshly cut firewood, packaged in stacks, should be stored for a minimum of two years for optimal combustion. Cut, split and stored under shelter in a well ventilated area, the wood dries faster. When improperly stored, wood deteriorates quickly.

Pellets

Pellets are produced by simple compression of sawdust, without chemical additives. Ultra-compact, they allow high yields and high autonomy. Easy to transport, store and use, they are suitable for all housing types. As with logs, pellets must be stored in a dry space. Their humidity must be less than 10%. They are usually sold in bags of 15 kg.

TIP

Split the wood before storing it, this helps it to dry. In addition, small logs emit fewer particles than large ones.



2 Master lighting the fire!

Before starting your fire, make sure the fresh air intake near the appliance is not blocked. Empty the ash pan, open the air intake dampers. Recent studies have identified a reverse ignition process that can greatly reduce the emission of fine particles. To do this, first place the thickest logs underneath and then place smaller logs above. Finish with small pieces of dry wood (kindling) and a firelighter. Check the draw and the air intake dampers before lighting the firelighter, then close the door.

TIP

Wait at least 10 minutes before reducing the air supply.

3 Control the draw correctly

An optimised draught saves fuel and reduces pollution. With a weak draught fuel will not burn easily, resulting in insufficient heating and a risk of smoke backflow. The stove and the chimney may become clogged, causing greater pollution. With too much draught, combustion becomes too fast and the gas temperature too high. You waste energy and use too much wood. The pressure in the flue system must be between 6 and 12 Pascals. This measurement is verified using a pressure gauge. A damper is necessary in almost all cases to regulate the draw to the recommended values. Depending on your appliance, you will have various settings that allow you to optimize the draught. For more information, see the operating instructions for your model.

How to tell if your settings are correct?

- > Each batch of wood should light when you place it in the appliance and keep burning.
- > The stove must not operate without blaze or you may clog the appliance and release noxious fumes into the environment.

TIP

The power of a stove, fireplace or insert depends on the amount of wood and the frequency of loading. The optimal power of a wood burning appliance, expressed in kW corresponds to its wood consumption in kg every 3 hours. Example: optimal power of 12 kW equates to a consumption of 4 kg of wood per hour.

4 Maintaining your appliance

Use the services of qualified professionals.

A well maintained appliance will save fuel, deliver better wood combustion and have better environmental performance. Your appliance and your installation will also be preserved for years to come.

Yearly maintenance is mandatory.

A complete inspection of your appliance and its installation must be performed annually by a qualified person. A maintenance certificate, that you should keep for 2 years, will be given.

The chimney must be swept twice per year.

Call a qualified professional to carry out two mechanical chimney sweepings of the flue system. One of them must also be done during the heating period. Ideally, the chimney sweeping must be done from the top. Remember to ask for a sweeping certificate. Warning! Chemical sweeping is not a replacement for a mechanical sweeping.

Regularly clean your wood burning stove.

A wood burning stove requires a few simple tasks that you can do yourself:

Ashes: an excess of ashes can block the air supply to your fire. For the best performance from your stove, remember to empty the ash pan regularly and to dust the fire grate.

The glass: to enjoy the charm of a roaring fire, regularly clean the glass! Dirty glass shows non-optimised combustion. A very hot burn will also clean the glass through the pyrolysis effect.

TIP

It's better to clean the glass when it's warm – it's more effective and quick. Moisten newspaper and tap it in some cold ashes. Rub the glass and repeat several times to remove all traces. Rinse with a damp sponge.

The seals: also remember to regularly check the condition of the door and glass seals.

Pellet stoves require more regular maintenance, see the instructions manual.

NEW CONCEPT

Invicta revolutionises the design of pellet stoves with its Plug-IN technology

Innovative technology and new design

After refreshing the old woodburner design back in the early 2000s, Invicta spent several years establishing itself in the pellet stove market. Thanks to a technical collaboration with our Italian partner Caminetti Montegrappa, a pellet stove leader in Italy and Europe, and our designer Bernard Dequet, Invicta has risen to the challenge. We have completely revolutionized pellet stoves. Our Cannelé Plug-IN model won the 2019 Janus de l'Industrie Prize, awarded by the Institut Français du Design.

Cast iron woodburners with a fabulous new look

By putting the stoves' technical workings into an ingenious wall reservoir, Invicta has freed itself from the stranglehold of the "pellet box." We now offer several unique models that plug into the hopper. These fabulous-looking products come in the same shapes that have made Invicta so successful, as well as brand new looks. Plug-IN is truly a new technology, paving the way for the next generation of pellet stoves.

Simple, ingenious cast iron woodburners for daily use

Plug-IN stoves offer longer burn times (up to 31 hours) thanks high capacity wall reservoirs (22 kg). The reservoirs provide an additional technical feature; they also function as screens, reducing the safety distance required from combustible materials. They can be placed directly against the wall. The wall reservoir also conceals the tank-filling tool. Temperature can be regulated using the control panel. Our Plug-IN stoves provide gentle, consistent heat.

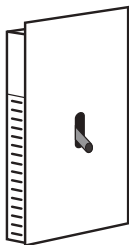
Quiet, radiant cast-iron stoves

Our Plug-IN stoves work silently:

- with natural convection, not a blower. In addition, the cast iron fire-box, a simple shell, radiates heat into the room, spreading a wonderful feeling of warmth.
- with natural draft, not a smoke extractor fan. (OVE and ARATOS models).
- A smoke extractor fan is included in all AUTO models.

Separate hopper

Large capacity 22 kg
and wall protection



Invicta cast-iron stoves



Unique. Simple. Design



The Plug-IN technology

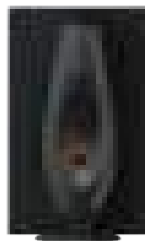
- Technical parts and the tank are separated from the heating body and hidden in the wall panel.
- Many stylish and designer cast iron woodburners can be connected to the wall unit.
- Several types of stoves can be connected: pellet or hybrid (logs + pellets) with manual or auto on/off.
- The Plug-IN stoves operate by natural convection, without the need for a blower, and are therefore silent. The cast iron woodburners radiate and spread a wonderful feeling of warmth.
- The cast iron woodburners radiate wonderful feeling of warmth.
- Optimal user comfort :
 - Temperature can be regulated using the control panel. Our Plug-IN stoves provide gentle, consistent heat.
 - Plug-IN stoves offer longer burn times (up to 31 hours) thanks to high capacity wall reservoirs (22 kg).
 - The reservoirs provide an additional technical feature. They also function as screens, reducing the safety distance required from combustible materials. They can be leaned right up against the wall.
 - An accessory for filling the tank is hidden in the wall panel.

ALTARA PLUG-IN AUTO



page 19

OVE PLUG-IN AUTO PLUG-IN



pages 16 and 20

CANNELÉ PLUG-IN AUTO



page 16

ARATOS PLUG-IN AUTO PLUG-IN HYBRID



pages 19 and 20

PLUG-IN, THE NEW GENERATION PELLET STOVES

CANNELE Plug IN Auto

Be part of the pellet stove revolution...enjoy the design and the many advantages of the Cannelé Plug-IN. This modern-looking cast iron stove silently radiates and diffuses a wonderful feeling of warmth.

H 1300 x W 780 x D 658 mm - Flue diameter 80 mm. Flue exit : Left or right on top of the hopper. (Comparative tables : p82) Design : B. Dequet.



ECOLABEL
A+

SILENT
natural
convection

FULL
AUTO

2-YEAR
Warranty



Heating surface
25 - 85 m²

Autonomy
13 - 31 h

Pellet consumption
0.7 - 1.7 kg/h

Heat output
adjustment
3 - 7 kW

Hopper capacity
22 kg

Colour choices

●
P642151



BV Cert. 7208672

OVE Plug IN Auto

An innovative pellet stove concept, the Ove Plug-IN AUTO gives pleasure to the senses. The view with an incredible aesthetic. A quiet air intake. And the practicality of a 22 kg reservoir and numerous programming options.

H 1300 x W 780 x D 642 mm - Flue diameter 80 mm. Flue exit : Left or right on top of the hopper. (Comparative tables : p82) Design : B. Dequet.



ECOLABEL
A+

SILENT
natural
convection

FULL
AUTO

2-YEAR
Warranty



Heating surface
25 - 85 m²

Autonomy
13 - 31 h

Pellet consumption
0.7 - 1.7 kg/h

Heat output
adjustment
3 - 7 kW

Hopper capacity
22 kg

Colour choices

●
P642111



BV Cert. 7208672





PLUG-IN, THE NEW GENERATION PELLETT STOVES

ALTARA PLUG IN Auto

Fully automatic, the Altara Plug-IN Auto, part of a new generation of pellet stoves, brings style and thermal comfort to your home. With its wall module concealing a 22 kg reservoir, you can enjoy the good looks and natural warmth of the Altara cast iron stove in complete peace of mind.

H 1300 x W 780 x D 600 mm - Flue diameter 80 mm. Flue exit : Left or right on top of the hopper. (Comparative tables : p82) Design : B. Dequet.



ECOLABEL
A+

SILENT
natural
convection

FULL
AUTO

2-YEAR
Warranty



Heating surface
25 - 85 m²

Autonomy
13 - 31 h

Pellet consumption
0.7 - 1.7 kg/h

Heat output
adjustment
3 - 7 kW

Hopper capacity
22 kg

Colour choices

●
P642131



BV Cert. 7208672

ARATOS PLUG IN Auto

Finally, a pellet stove that's both beautiful to look at and easy to use. The technical parts and the 22 kg capacity hopper are cleverly hidden in the wall tank located behind the unit. Enjoy a revolutionary Plug-IN design and concept with while experiencing the comfort of a new generation of pellet stove.

H 1300 x W 780 x D 642 mm - Flue diameter 80 mm. Flue exit : Left or right on top of the hopper. (Comparative tables : p82) Design : B. Dequet.



ECOLABEL
A+

SILENT
natural
convection

FULL
AUTO

2-YEAR
Warranty



Heating surface
25 - 85 m²

Autonomy
13 - 31 h

Pellet consumption
0.7 - 1.7 kg/h

Heat output
adjustment
3 - 7 kW

Hopper capacity
22 kg

Colour choices

●
P649011



BV Cert. 7208672

PLUG-IN, THE NEW GENERATION PELLET STOVES

OVE PLUG IN

Installed like a conventional wood stove, the OVE Plug-IN pellet stove works by natural draft, without the noise of an exhaust fan. Enjoy its unique look and high-level of autonomy from its low-profile wall tank.

H 1300 x W 800 x D 610 mm - Flue diameter 130 mm. Flue exit : Top.
(Comparative tables : p82) Design : B. Dequet.

ECOLABEL
A+

SILENT
natural
convection

2-YEAR
Warranty

Heating surface
30 - 70 m²

Autonomy
14 - 27 h

Pellet consumption
0.8 - 1.5 kg/h

Heat output
adjustment
3,5 - 6 kW

Hopper capacity
22 kg

Colour choices

●
P642100



BV Cert. 7208672

ARATOS PLUG IN Hybrid

The hybrid Aratos Plug-IN stove uses logs to provide a beautiful blaze without the use of electricity. In pellet mode, the Aratos Plug-IN diffuses a soft and regulated heat. All this and quiet too!

H 1300 x W 800 x D 602 mm - Flue diameter 150 mm. Flue exit : Top.
(Comparative tables : p82) Design : B. Dequet.

flamme
VERTE | Le label
du chauffage
au bois
★★★★★



ECOLABEL
A

SILENT
natural
convection

2-YEAR
Warranty

CRÉDIT
D'IMPÔT

PRIM
ENERGIE

Heating surface
40 - 85 m²

Autonomy
Pellets 14 - 27 h
Wood 8 h

Pellet consumption
0.8 - 1.6 kg/h

Heat output
adjustment
3,5 - 6 kW

Hopper capacity
22 kg

Colour choices

●
P649000



BV Cert. 7208672

HYBRID (LOG & PELLET) WOODBURNERS

AKIMIX Spring

As the conductor of your heating system, you can choose your musical score: the economic advantage of logs or the practicality of pellets. This simple stove is very quiet and plays a soft melody of comfort.

H 851 x W 766 x D 372 mm - Flue diameter 150 mm. Flue exit : Top or Rear. (Comparative tables : p83) Design : B. Dequet.



SILENT natural convection	POST COMBUSTION	100% CAST IRON	5-YEAR Warranty
---------------------------------	--------------------	----------------------	--------------------

Heating surface 40 – 85 m ²
Autonomy Pellets 8 – 17 h Wood 8 h
Pellet consumption 0,85 – 1,9 kg/h
Heat output adjustment 3,5 – 6,5 kW
Hopper capacity 15 kg

Colour choices

●
P619034



CAROLO MIX

For those who don't know whether to choose between a wood burning stove or a pellet stove, there's the Carolo Mix. This stove combines the best of both types of fuel. Simple to use, it can be easily switched from one function to another. You'll be charmed by its eye-catching design.

H 690 x W 799 x D 434 mm - Flue diameter 150 mm. Flue exit : Top. (Comparative tables : p83)



SILENT natural convection	POST COMBUSTION	100% CAST IRON	CAST IRON Coating	5-YEAR Warranty
---------------------------------	--------------------	----------------------	----------------------	--------------------

Heating surface 40 – 85 m ²
Autonomy Pellets 8 – 17 h Wood 8 h
Pellet consumption 0,85 – 1,9 kg/h
Heat output adjustment 3,5 – 6,5 kW
Hopper capacity 15 kg

Colour choices

●
P649544





Woodburners

With excellent thermal conductivity and high inertia: cast iron is the ideal material for heating appliances. The heat developed by the combustion of the wood is stored by the cast iron, and released to the home in the best possible manner thanks to the regularity of emission. Its excellent castability gives it that famous peach skin or velvety finish. This material is 100% recyclable. Invicta cast iron woodburners are decorative objects in their own right, and are equally appropriate in a rustic or contemporary interior. Finally, in addition to their sturdy appearance, they are incredibly durable.

NEW BRIO Direct Air-Supply



BRIO Direct Air-Supply **NEW**

This wood-burning stove passes all the tests with flying colours. Its unmistakable style is an eye-catcher. The atmosphere heats up instantly thanks to its exceptional performance. You will be treated to a warm and wonderful show live from your living room. Let's applaud!

H 717 x W 853 x D 532 mm - Flue diameter 150 mm. Flue exit : Top.
(Comparative tables : p85) Design : B. Dequet.



CONNECTABLE

POST COMBUSTION

100% CAST IRON

5-YEAR Warranty

Heating surface
40 - 85 m²

Optimal heat output
7 kW

Wood consumption
2,3 kg wood / h

Heat output
adjustment
4,5 - 10,5 kW

Maximum log length
50 cm

Colour choices

●
P648144

BRIO ON PEDESTAL

Direct Air-Supply **NEW**

From the top of its cast iron central column, this wood stove reveals its immense talent. The spotlight is on this new heating star with an incredible look. Positive energy and warm waves galvanise its audience. What Brilliance!

H 1150 x W 853 x D 532 mm - Flue diameter 150 mm. Flue exit : Top.
(Comparative tables : p85) Design : B. Dequet.



Heating surface 40 - 85 m²
Optimal heat output 7 kW
Wood consumption 2,3 kg wood / h
Heat output adjustment 4,5 - 10,5 kW
Maximum log length 50 cm

Colour choices

●
P648114



BVCCert. 7208672



WOODBURNERS



ELO M Direct Air-supply



Immerse yourself in the extraordinary world of the ELO M stove and enjoy the bright side of its energy force. The elegance of its white facade blends harmoniously with its black cast iron.

H 880 x W 500 x D 374 mm - Flue diameter 150 mm. Flue exit : Top. (Comparative tables : p86)

	Le label du chauffage au bois		
ECOLABEL A	CONNECTABLE Airtight	POST COMBUSTION	AIR CONTROL
5-YEAR Warranty			100% CAST IRON

Heating surface	25 - 60 m ²
Optimal heat output	5 kW
Wood consumption	1,7 kg wood / h
Heat output adjustment	3 - 7,5 kW
Maximum log length	33 cm
Colour choices	● P610248



WOODBURNERS

ELO L Direct Air-supply

Welcome to the ELO universe! You're now entering a warm and peaceful place. Compact and efficient, the ELO L was designed to fit easily into an existing fireplace.

H 920 x W 500 x D 374 mm - Flue diameter 150 mm. Flue exit : Top.
(Comparative tables : p86)













Heating surface 25 - 60 m ²
Optimal heat output 5 kW
Wood consumption 1,7 kg wood / h
Heat output adjustment 3 - 7,5 kW
Maximum log length 33 cm

Colour choices

●
P610244



WOODBURNERS

OVATIO

Ready for the show? You can't help but be impressed by the outstanding heating capacity and energy efficiency of this stove - not to mention its unique and beautiful design. Standing ovation!

W 461 x H 1162 x D 461 mm - Flue diameter 130 mm. Flue exit : Top.
(Comparative tables : p91) Design : B. Dequet.











Heating surface 25 - 60 m ²
Optimal heat output 5 kW
Wood consumption 1,7 kg wood / h
Heat output adjustment 3 - 7,5 kW
Maximum log length 32 cm

Colour choices

●
P614904



SEDAN S



Classic and timeless, the Sedan S plus stove holds its own against bigger models and fits in well in your home.

H 580 x W 500 x D 443 mm - Flue diameter 150 mm. Flue exit : Top. (Comparative tables : p92)



Heating surface	25 - 60 m ²
Optimal heat output	5 kW
Wood consumption	1,7 kg wood / h
Heat output adjustment	3 - 7,5 kW
Maximum log length	30 cm

Colour choices

● P945044 ● P945046 ● P945047
● P945048



WOODBURNERS

NORIK

Settle into a heavenly little corner and give in to the pleasure and enjoyment offered by this very latest Norik wood stove.

H 630 x W 620 x D 465 mm - Flue diameter 150 mm. Flue exit : Top or Rear. (Comparative tables : p91)



Heating surface	30 – 70 m ²
Optimal heat output	6 kW
Wood consumption	2 kg wood / h
Heat output adjustment	4 – 9 kW
Maximum log length	50 cm
Colour choices	● P912144

ALTAIS Direct Air-supply

The Altais stove shines with a thousand lights like the star whose name it bears.

Its panoramic window offers a wide and perfect view of the fire.

Curvaceous, it rests on its wide cast iron base.

H 1150 x W 530 x D 530 mm - Flue diameter 150 mm. Flue exit : Top. (Comparative tables : p83) Design : B. Dequet.



Heating surface	30 – 70 m ²
Optimal heat output	6 kW
Wood consumption	2 kg wood / h
Heat output adjustment	4 – 9 kW
Maximum log length	33 cm
Colour choices	● P610844

ALCOR Direct Air-supply **NEW**

The Alcor promises you a bright future. Its wide angle panoramic window and elegant finish add an undeniable glow to the fire.

H 1200 x W 450 x D 450 mm - Flue diameter 150 mm. Flue exit : Top. (Comparative tables : p83) Design : B. Dequet.



Heating surface	30 – 70 m ²
Optimal heat output	6 kW
Wood consumption	2 kg wood / h
Heat output adjustment	4 – 9 kW
Maximum log length	33 cm
Colour choices	● P610744

NEOSEN 3-GLASS Direct Air-supply **NEW**

Admire your Neosen stove from every direction...and be hypnotized by its relaxing and magnificent flames. Reap the full benefits of its outstanding heating capacity and energy efficiency.

H 1050 x W 500 x D 522 mm - Flue diameter 150 mm. Flue exit : Top. (Comparative tables : p90)



Heating surface	30 - 70 m ²
Optimal heat output	6 kW
Wood consumption	2 kg wood / h
Heat output adjustment	4 - 9 kW
Maximum log length	40 cm
Colour choices	● P648837

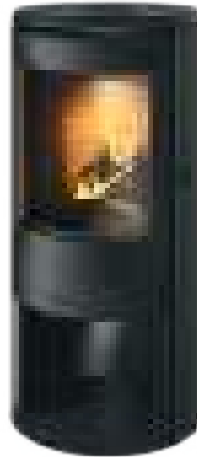


WOODBURNERS

NEOSEN Direct Air-supply **NEW**

Known for its outstanding heating capacity and energy efficiency, Neosen immerses you in an ambiance of comfort, relaxation, and wellbeing.

H 1050 x W 500 x D 522 mm - Flue diameter 150 mm. Flue exit : Top.
(Comparative tables : p90)

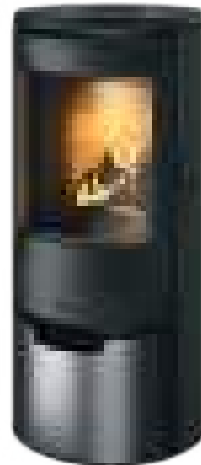


Heating surface	30 - 70 m ²
Optimal heat output	6 kW
Wood consumption	2 kg wood / h
Heat output adjustment	4 - 9 kW
Maximum log length	40 cm
Colour choices	● P648836

NEOSEN Air-tight **NEW**

An airtight and connectable version of the Neosen stove, this model allows the combustion air to be directly connected to the outside. The Onsen airtight connectable stove is ideal for low energy consumption homes.

H 1050 x W 500 x D 522 mm - Flue diameter 150 mm. Flue exit : Top.
(Comparative tables : p90)



Heating surface	30 - 70 m ²
Optimal heat output	6 kW
Wood consumption	2 kg wood / h
Heat output adjustment	4 - 9 kW
Maximum log length	40 cm
Colour choices	● P648838

NEOSEN Heat Store **NEW**

Designed to be fitted to Neosen stoves, the heat storage kit, made of refractory bricks, continues to heat your home long after the flames have gone.

(Comparative tables : p91)



Colour choices ● P696300

SEVILLE 2



The Seville 2 stove adds a stylish touch to your home and gives it a warm, cozy feel.

H 692 x W 560 x D 462,5 mm - Flue diameter 150 mm.
Flue exit : Top. (Comparative tables : p93)



Heating surface	40 - 85 m ²
Optimal heat output	7 kW
Wood consumption	2,3 kg wood / h
Heat output adjustment	4,5 - 10,5 kW
Maximum log length	40 cm
Colour choices	<input type="radio"/> P619244 <input checked="" type="radio"/> P619246 <input type="radio"/> P619247



WOODBURNERS

ALTARA Direct Air-supply

ALTARA is made with a flawless design and outstanding efficiency. Awarded 7 stars by the «Flamme» label, this stove will burn brightly in your home for many years to come.

H 1050 x W 450 x D 450 mm - Flue diameter 150 mm. Flue exit : Top.
(Comparative tables : p83) Design : B. Dequet.



Heating surface	40 - 85 m ²
Optimal heat output	7 kW
Wood consumption	2,3 kg wood / h
Heat output adjustment	4,5 - 10,5 kW
Maximum log length	33 cm
Colour choices	● P610344

IWAKI

The zen-inspired Iwaki infuses harmony and serenity into your interior space. Feel all the positive energy radiating from this wood stove which features beautifully balanced proportions.

H 850 x W 372 x D 394 mm - Flue diameter 150 mm. Flue exit : Top or Rear. (Comparative tables : p88) Design : B. Dequet.



Heating surface	40 - 85 m ²
Optimal heat output	7 kW
Wood consumption	2,3 kg wood / h
Heat output adjustment	4,5 - 10,5 kW
Maximum log length	34 cm
Colour choices	● P610644

OKINO

This Japanese style stove provides for a warm, peaceful, and harmonious setting.

H 850 x W 402 x D 402 mm - Flue diameter 150 mm. Flue exit : Top.
(Comparative tables : p91) Design : B. Dequet.



Heating surface	40 - 85 m ²
Optimal heat output	7 kW
Wood consumption	2,3 kg wood / h
Heat output adjustment	4,5 - 10,5 kW
Maximum log length	34 cm
Colour choices	● P610544

WOODBURNERS

LA BORNE 2

This new version of the La Borne is more efficient and features a post-combustion system. The Borne 2 brilliantly creates an efficient and convivial wood-burning experience.

H 684 x W 548 x D 400 mm - Flue diameter 150 mm. Flue exit : Top.
(Comparative tables : p89)



Heating surface	40 - 85 m ²
Optimal heat output	7 kW
Wood consumption	2,3 kg wood / h
Heat output adjustment	4,5 - 10,5 kW
Maximum log length	45 cm
Colour choices	● P645444

MOAÏ Direct Air-supply

Inspired by the statues on Easter Island, the Moaï wood burning stove, with its angular glass, provides a magnificent view of the fire. Each MOAÏ bears the responsibility for the part of the world it looks out on and, as such, protects your home from the cold.

H 1398.5 x W 560 x D 457 mm - Flue diameter 180 mm. Flue exit : Top or Rear. (Comparative tables : p90) Design : B. Dequet.



Heating surface	40 - 100 m ²
Optimal heat output	8 kW
Wood consumption	2,6 kg wood / h
Heat output adjustment	5 - 12 kW
Maximum log length	35 cm
Colour choices	● P614244

ORENSE CHROME Direct Air-supply

Seductive, the Orense wood burning stove has a voluptuous shape and graceful curves. With its high-tech features and environmentally-friendly qualities, the Orense combines style and functionality.

H 1000 x W 550 x D 590 mm - Flue diameter 150 mm. Flue exit : Top or Rear. (Comparative tables : p91)



Heating surface	40 - 100 m ²
Optimal heat output	8 kW
Wood consumption	2,6 kg wood / h
Heat output adjustment	5 - 12 kW
Maximum log length	38 cm
Colour choices	● P619444

ARATOS



Aratos is the signature of a modern, efficiently-heated home. It embodies warmth and beauty. Comfort. Peace. Luxury.

H 1050 x W 527 x D 453 mm - Flue diameter 150 mm. Flue exit : Top. (Comparative tables : p84) Design : B. Dequet.



Heating surface	40 - 100 m ²
Optimal heat output	8 kW
Wood consumption	2,6 kg wood / h
Heat output adjustment	5 - 12 kW
Maximum log length	40 cm
Colour choices	P645344

WOODBURNERS

ALTEA

Come gather around the fire! This wood burning stove, with its classic lines, has just had a rejuvenation. Now equipped with post-combustion, Altéa offers excellent heating as well as environmental qualities.

H 744 x W 644 x D 547 mm - Flue diameter 150 mm. Flue exit : Top or Rear. (Comparative tables : p84)



Heating surface	40 - 100 m ²
Optimal heat output	8 kW
Wood consumption	2,6 kg wood / h
Heat output adjustment	5 - 12 kW
Maximum log length	50 cm
Colour choices	● P916644

CHATEL

The compact, high-performance Châtel wood-burning stove is suitable for any type of interior design.

H 803 x W 476 x D 375 mm - Flue diameter 150 mm. Flue exit : Top. (Comparative tables : p86)



Heating surface	40 - 100 m ²
Optimal heat output	8 kW
Wood consumption	2,6 kg wood / h
Heat output adjustment	5 - 12 kW
Maximum log length	34 cm
Colour choices	● P613744

MESNIL

Despite its small size, Mesnil stands out thanks to its pedestal and high energy performance.

H 959 x W 486.5 x D 385 mm - Flue diameter 150 mm. Flue exit : Top. (Comparative tables : p89)



Heating surface	40 - 100 m ²
Optimal heat output	8 kW
Wood consumption	2,6 kg wood / h
Heat output adjustment	5 - 12 kW
Maximum log length	34 cm
Colour choices	● P613644

ILOT Direct Air-supply



With its unique look, the Îlot is ideal for creating a subdued and comfortable atmosphere in your home. High performance lies just behind its radiant good looks, thanks to reverse combustion.

H 716 x W 613 x D 619 mm - Flue diameter 150 mm.
 Flue exit : Rear. (Comparative tables : p88) Design : A. Lapierre.



5-YEAR Warranty

Heating surface	40 - 100 m ²
Optimal heat output	8 kW
Wood consumption	2,6 kg wood / h
Heat output adjustment	5 - 12 kW
Maximum log length	30 cm
Colour choices	P616944

CAROLO ZEN Direct Air-supply **NEW**



With its combination of natural materials, Carolo Zen adorns your interior with a soft Nordic light, inviting relaxation and well-being.

H 751 x W 600 x D 428 mm - Flue diameter 150 mm. Flue exit : Top. (Comparative tables : p85)



Heating surface	40 - 100 m ²
Optimal heat output	8 kW
Wood consumption	2,6 kg wood / h
Heat output adjustment	5 - 12 kW
Maximum log length	56 cm

Colour choices P616249



WOODBURNERS

CAROLO

Carolo is done entirely in cast iron from France. It offers unmatched warmth and a magnificent view of its fire. What's more, this stove is incredibly energy-efficient.

H 690 x W 600 x D 378 mm - Flue diameter 150 mm. Flue exit : Top.
Kit de raccordabilité air primaire
Ref P696200. (Comparative tables : p85)



Heating surface 40 - 100 m ²
Optimal heat output 8 kW
Wood consumption 2,6 kg wood / h
Heat output adjustment 5 - 12 kW
Maximum log length 56 cm

Colour choices

● P916244



WOODBURNERS

BRADFORD

Bradford is designed with bold and timeless style. Classic yet trendy, this stove comes in subtle charcoal, elegant enamel ivory, or dazzling enamel red.

H 690 x L 730 x D 579,5 mm - Flue diameter 150 mm. Flue exit : Top or Rear. (Comparative tables : p84)



Heating surface 50 - 110 m ²
Optimal heat output 9 kW
Wood consumption 3 kg wood / h
Heat output adjustment 6 - 13,5 kW
Maximum log length 54 cm

Colour choices

● ○ ● P917344 P917346 P917347



WOODBURNERS

CALCIAS

Calcias is unique: an elliptical shape that brings warmth and modernity; high energy performance thanks to the cast iron hearth; and on the practical side, a steel basket to hold your logs.

H 850 x W 700 x D 400 mm - Flue diameter 150 mm. Flue exit : Top or Rear. (Comparative tables : p85)



Heating surface 80 m²
Optimal heat output 9 kW
Wood consumption 3 kg wood / h
Heat output adjustment 6 - 11,5 kW
Maximum log length 50 cm

Colour choices

●
P648803



KAORI

Stop the cold in its tracks with this charming and discreet stove with proven thermal efficiency. Treat yourself to a warm and cozy Kaori fireplace.

H 740 x W 754 x D 404 mm - Flue diameter 150 mm. Flue exit : Top or Rear. (Comparative tables : p88) Design : B. Dequet.



Heating surface 50 - 110 m²
Optimal heat output 9 kW
Wood consumption 3 kg wood / h
Heat output adjustment 6 - 13,5 kW
Maximum log length 58 cm

Colour choices

●
P647844



BVCent-7208672

KAORI ZEN

NEW



With its Scandinavian design, Kaori Zen transforms your interior into a cocoon of serenity and softness.

H 749 x W 754 x D 404 mm - Flue diameter 150 mm. Flue exit : Top or Rear. (Comparative tables : p88) Design : B. Dequet.



Heating surface	50 - 110 m ²
Optimal heat output	9 kW
Wood consumption	3 kg wood / h
Heat output adjustment	6 - 13,5 kW
Maximum log length	58 cm
Colour choices	P647849



WOODBURNERS



KAZAN ZEN



NEW

With its 'Hygge' touch, Kazan Zen reveals a comfortable and warm interior, where it is good to find sanctuary.

H 778 x W 660 x D 395 mm - Flue diameter 150 mm. Flue exit : Top or Rear. (Comparative tables : p88) Design : B. Dequet.



Heating surface	50 – 110 m ²
Optimal heat output	9 kW
Wood consumption	3 kg wood / h
Heat output adjustment	6 – 13,5 kW
Maximum log length	58 cm

Colour choices P610449

WOODBURNERS

KAZAN

Kazan is a stylish and high-performance stove inspired by the heat efficiency of cast iron radiators. Its fins provide it with a unique and elegant look, all the while improving its energy efficiency by way of an extended heat transfer surface.

H 768 x W 652 x D 372 mm - Flue diameter 150 mm. Flue exit : Top or Rear. (Comparative tables : p88) Design : B. Dequet.



Heating surface 50 - 110 m ²
Optimal heat output 9 kW
Wood consumption 3 kg wood / h
Heat output adjustment 6 - 13,5 kW
Maximum log length 58 cm

Colour choices

●
P610444



BV Cert. 7208672

WOODBURNERS

KAZAN GA

Featuring a screen-printed «grand angle» (GA) pane, our Kazan stove is both powerful and chic. Its fins are designed with an extended heat transfer surface for improved energy efficiency.

H 768 x W 652 x D 372 mm - Flue diameter 150 mm. Flue exit : Top or Rear. (Comparative tables : p89) Design : B. Dequet.



Heating surface 50 - 110 m ²
Optimal heat output 9 kW
Wood consumption 3 kg wood / h
Heat output adjustment 6 - 13,5 kW
Maximum log length 58 cm

Colour choices

●
P610443



BV Cert. 7208672

WOODBURNERS

CASSINE

With its simple design and vertical lines, the Cassine wood stove is a perfect choice to keep your home pleasantly warm.

H 950 x W 513 x D 415 mm - Flue diameter 150 mm. Flue exit : Top.
(Comparative tables : p85)



Heating surface 55 - 120 m ²
Optimal heat output 10 kW
Wood consumption 3,3 kg wood / h
Heat output adjustment 6,5 - 15 kW
Maximum log length 40 cm

Colour choices

- P614744



BVCert., 7208672

MAIRY

Experience this stove, made entirely of cast iron, and immerse yourself in a wonderful world of comfort and energy efficiency.

H 1071 x W 524 x D 426,5 mm - Flue diameter 150 mm. Flue exit :
Top. (Comparative tables : p89)



Heating surface 55 - 120 m ²
Optimal heat output 10 kW
Wood consumption 3,3 kg wood / h
Heat output adjustment 6,5 - 15 kW
Maximum log length 40 cm

Colour choices

- P614544



BVCert., 7208672

CHAMANE 10



This wood-burning stove offers outstanding environmental performance and outstanding heat output. Featuring an understated anthracite finish, Chamane takes up minimal space yet produces impressive heat! Sleek lines and balanced proportions enhance its innovative design.

H 1200 x W 560 x D 578 mm - Flue diameter 180 mm. Flue exit : Top. (Comparative tables : p86) Design : B. Dequet. 14 Kw version Ref. P615644 (Comparative tables : p86)



Heating surface	55 - 120 m ²
Optimal heat output	10 kW
Wood consumption	3,3 kg wood / h
Heat output adjustment	6,5 - 15 kW
Maximum log length	44 cm
Colour choices	P615614



WOODBURNERS

FIFTY Arche

This vintage stove is designed with curved legs and comes in a variety of colors. Enjoy 1950s style combined with the energy efficiency of the future.

H 733 x W 922 x D 442,5 mm - Flue diameter 150 mm. Flue exit : Top.
(Comparative tables : p87)



Heating surface 55 - 120 m ²
Optimal heat output 10 kW
Wood consumption 3,3 kg wood / h
Heat output adjustment 6,5 - 15 kW
Maximum log length 60 cm

Colour choices

● ○ ●
P647944 P647946 P647947



BV Cert. 7208672

MODENA

This retro style wood stove will go perfectly in a warm and welcoming interior. Energy-efficient, environmentally-friendly, and beautifully enameled, Modena comes in a variety of colors including red, ivory, and super trendy gray.

H 741 x W 764 x D 508 mm - Flue diameter 150 mm. Flue exit : Top or Rear. (Comparative tables : p90)



Heating surface 55 - 120 m ²
Optimal heat output 10 kW
Wood consumption 3,3 kg wood / h
Heat output adjustment 6,5 - 15 kW
Maximum log length 50 cm

Colour choices

● ○ ● ●
P917544 P917546 P917547
P917548



BV Cert. 7208672



FIFTY ON PEDESTAL



Welcome the spirit and imagination of happy times into your home with this vintage wood-burning stove, available in several colors. Inspired by 1950s style, Fifty also brings you the future with high-performance efficiency.

H 828 x W 922 x D 442,5 mm - Flue diameter 150 mm.
Flue exit : Top. (Comparative tables : p87)

Version with rear flue: Anthracite P648064 - Ivory P648066 - Red P648067



Heating surface	55 - 120 m ²
Optimal heat output	10 kW
Wood consumption	3,3 kg wood / h
Heat output adjustment	6,5 - 15 kW
Maximum log length	60 cm

Colour choices
P648044 P648046 P648047

WOODBURNERS

SEDAN M

Classic, timeless and side-loading, the Sedan M stove gets a fresh new look with its trendy gray enamel.

H 701 x W 644 x D 463 mm - Flue diameter 150 mm. Flue exit : Top or Rear. (Comparative tables : p92)



Heating surface 55 - 120 m ²
Optimal heat output 10 kW
Wood consumption 3,3 kg wood / h
Heat output adjustment 6,5 - 15 kW
Maximum log length 42 cm

Colour choices



BV Cert. 7208672



TIPI

The great sacred spirit of fire hangs over this stove. Its shape draws its inspiration from the traditional dwelling of the North American Plains Indians. Simple and slender, the Tipi works perfectly with its doors open to celebrate the worshiping of fire. In extreme cold, with its doors closed, it's a great source of renewable heat.

H 1585 x W 754 x D 754 mm - Flue diameter 200 mm. Flue exit : Top. (Comparative tables : p93) Design : B. Dequet.



Heating surface 55 - 120 m ²
Optimal heat output 10 kW
Wood consumption 3,3 kg wood / h
Heat output adjustment 6,5 - 15 kW
Maximum log length 40 cm

Colour choices



BV Cert. 7208672



OVE



BV Cert. 7208672

Do you feel like relaxing by the fire or curling up on the couch? The Ove is perfect for transforming your home into a cozy cocoon! With its irresistible look and powers of seduction, the Ove doesn't just rely on its looks: it promises great performance and is environmentally-friendly.

H 1310 x W 550 x D 550 mm - Flue diameter 180 mm. Flue exit : Top. (Comparative tables : p91) Design : B. Dequet.



Heating surface	55 - 120 m ²
Optimal heat output	10 kW
Wood consumption	3,3 kg wood / h
Heat output adjustment	6,5 - 15 kW
Maximum log length	33 cm
Colour choices	● P614944

ANGOR



ANGOR is chic, sophisticated, and incredibly efficient. Its stylish curved design has a way of highlighting its flames. Perfect for fans of charming and discreet wood burning stoves.

H 770 x W 820 x D 471 mm - Flue diameter 150 mm. Flue exit : Top or Rear. (Comparative tables : p84) Design : B. Dequet.



Heating surface	65 - 145 m ²
Optimal heat output	12 kW
Wood consumption	4 kg wood / h
Heat output adjustment	8 - 18 kW
Maximum log length	66 cm
Colour choices	● P918644



WOODBURNERS

MANDOR NEW VERSION

Done entirely in cast iron, this stove is chic, sophisticated, and incredibly efficient. Its stylish curved design has a way of highlighting its flames. Made with 4 elegant cast-iron legs, Mandor is perfect for fans of charming and discreet wood burning stoves.

H 763 x W 820 x D 460 mm - Flue diameter 150 mm. Flue exit : Top.
(Comparative tables : p89) Design : B. Dequet.



Heating surface 65 - 145 m ²
Optimal heat output 12 kW
Wood consumption 4 kg wood / h
Heat output adjustment 8 - 18 kW
Maximum log length 66 cm

Colour choices

● P918064



BV Cert. 7208672

SEDAN L

The retro style of the Sedan L wood burning stove fits perfectly into a warm and friendly setting. A practical feature is the ability to load the logs from the side.

H 770 x W 766 x D 523 mm - Flue diameter 180 mm. Flue exit : Top or Rear. (Comparative tables : p92)



Heating surface 65 - 145 m ²
Optimal heat output 12 kW
Wood consumption 4 kg wood / h
Heat output adjustment 8 - 18 kW
Maximum log length 60 cm

Colour choices

● ○ P917244 P917246



BV Cert. 7208672

WOODBURNERS

SYMPHONIA

Let Symphonia captivate your senses. The hypnotic dance of the flames is reflected in the design on the doors of this wood-burning stove. Cozy evenings await, lulled by the sound of the crackling fire. An authentic shape that guarantees excellent performance.

H 913 x W 1034 x D 491 mm - Flue diameter 180 mm. Flue exit : Top.
(Comparative tables : p93) Design : B. Dequet.



Heating surface 65 - 145 m ²
Optimal heat output 12 kW
Wood consumption 4 kg wood / h
Heat output adjustment 8 - 18 kW
Maximum log length 71 cm

Colour choices

● P611544



BVCert. 7208672

THEIA

Unique and flamboyant, our Theia cast iron chimney stove redefines the traditional fireplace.

H 913 x W 1034 x D 491 mm - Flue diameter 180 mm. Flue exit : Top.
(Comparative tables : p93) Design : B. Dequet.



Heating surface 65 - 145 m ²
Optimal heat output 12 kW
Wood consumption 4 kg wood / h
Heat output adjustment 8 - 18 kW
Maximum log length 71 cm

Colour choices

● P611344



BVCert. 7208672



ANTAYA

Let yourself be captivated by the magic of Antaya. This wide-view chimney stove offers impressive performance and style

H 868 x W 1051 x D 480 mm - Flue diameter 180 mm. Flue exit : Top. (Comparative tables : p84) Design : B. Dequet.

Heating surface	65 - 145 m ²
Optimal heat output	12 kW
Wood consumption	4 kg wood / h
Heat output adjustment	8 - 18 kW
Maximum log length	71 cm
Colour choices	P611444



WOODBURNERS

GAYA SLATE

Get comfortable in your armchair and enjoy the fantastic show provided by the Gaya Slate chimney stove.

H 1143 x W 1200 x D 503 mm - Flue diameter 180 mm. Flue exit : Top.
(Comparative tables : p87) Design : B. Dequet.



Heating surface 65 - 145 m ²
Optimal heat output 12 kW
Wood consumption 4 kg wood / h
Heat output adjustment 8 - 18 kW
Maximum log length 71 cm

Colour choices

● P611744



BY Cert.: 7208672

ITAYA

Sophisticated and unique, our Itaya cast iron stove provides a touch of exquisite warmth to any interior.

H 815 x W 1051 x D 431 mm - Flue diameter 180 mm. Flue exit : Top.
(Comparative tables : p88) Design : B. Dequet.



Heating surface 65 - 145 m ²
Optimal heat output 12 kW
Wood consumption 4 kg wood / h
Heat output adjustment 8 - 18 kW
Maximum log length 71 cm

Colour choices

● P611044



BY Cert.: 7208672

GAYA LEAF



Gaya Leaf offers a unique take on the cast-iron stove, with a surprising yet elegant design that enhances the beauty of the flames.

H 1300 x W 1213 x D 500.5 mm - Flue diameter 180 mm.
Flue exit: Top. (Comparative tables : p87) Design : B. Dequet.



Heating surface	65 - 145 m ²
Optimal heat output	12 kW
Wood consumption	4 kg wood / h
Heat output adjustment	8 - 18 kW
Maximum log length	71 cm
Colour choices	P611844



WOODBURNERS

GOMONT

The ultramodern Gormont wood stove takes up minimal space and provides maximum comfort. It warms and brightens all interior spaces.

H 1103 x W 550 x D 447,5 mm - Flue diameter 150 mm. Flue exit : Top. (Comparative tables : p87)



BVCert. 7208672

Heating surface	65 – 145 m ²
Optimal heat output	12 kW
Wood consumption	4 kg wood / h
Heat output adjustment	8 – 18 kW
Maximum log length	45 cm
Colour choices	● P615844

ARGOS

A state-of-the-art wood-burning stove with afterburner system, Argos brilliantly leads the way towards efficient and user-friendly wood heating.

H 1220 x W 532 x D 444 mm - Flue diameter 180 mm. Flue exit : Top. (Comparative tables : p84) Design : B. Dequet.



BVCert. 7208672

Heating surface	65 – 145 m ²
Optimal heat output	12 kW
Wood consumption	4 kg wood / h
Heat output adjustment	8 – 18 kW
Maximum log length	40 cm
Colour choices	● P915144

PHAROS 360

Invicta's flagship stove, the Pharos paves the way to a modern and efficiently heated home. Follow the light and discover the many advantages of this swivel stove.

H 1210 x W 531.5 x D 530 mm - Flue diameter 180 mm. Flue exit : Top. (Comparative tables : p92) Design : B. Dequet.



BVCert. 7208672

Heating surface	65 – 145 m ²
Optimal heat output	12 kW
Wood consumption	4 kg wood / h
Heat output adjustment	8 – 18 kW
Maximum log length	40 cm
Colour choices	● P915044

POW WOW



Like a totem in your living room, the Pow-Wow celebrates the sacred spirit of fire. Its modern, ethnically-inspired shape gives it an undeniable charm. This large, entirely cast iron stove is effective in even the coldest temperatures, and can also be used doors open like a traditional fireplace.

H 1895 x W 817 x D 817 mm - Flue diameter 200 mm. Flue exit : Top. (Comparative tables : p92) Design : B. Dequet.



Heating surface	75 - 170 m ²
Optimal heat output	14 kW
Wood consumption	4,7 kg wood / h
Heat output adjustment	9,5 - 21 kW
Maximum log length	50 cm
Colour choices	● P615244



WOODBURNERS

AARON NEW VERSION

Designed with two front sides, it's easy to find the perfect spot for your new Aaron fireplace. This stove is ideal for large logs and offers a stunning panoramic view of its flames. Simply place it on a raw material such as stone or on one of its benches (sold separately). Bench available in 2 sizes.

H 610 x W 910 x D 481 mm - Flue diameter 180 mm. Flue exit : Top.
(Comparative tables : p83)



100%
CAST
IRON

5-YEAR
Warranty



BV Cert. 7208672

Heating surface	65 – 145 m ²
Optimal heat output	12 kW
Wood consumption	4 kg wood / h
Heat output adjustment	8 – 18 kW
Maximum log length	80 cm
Colour choices	● P912904

ELTON NEW VERSION

Elton is an efficient stove with a simple, modern look. It prominently displays the flames and can accommodate large logs.

H 930 x W 910 x D 480 mm - Flue diameter 180 mm. Flue exit : Top or Rear. (Comparative tables : p86)



POST
COMBUSTION

100%
CAST
IRON

5-YEAR
Warranty



BV Cert. 7208672

Heating surface	65 – 145 m ²
Optimal heat output	12 kW
Wood consumption	4 kg wood / h
Heat output adjustment	8 – 18 kW
Maximum log length	80 cm
Colour choices	● P912744

NELSON NEW VERSION

The two glass sides of our Nelson stove give a unique character to your home. Cozy evenings await. Settle in on either side of the stove, and listen to the unmistakable sound of the crackling fire as you watch the flames dance.

H 930 x W 910 x D 480 mm - Flue diameter 180 mm. Flue exit : Top.
(Comparative tables : p90)



100%
CAST
IRON

5-YEAR
Warranty



BV Cert. 7208672

Heating surface	65 – 145 m ²
Optimal heat output	12 kW
Wood consumption	4 kg wood / h
Heat output adjustment	8 – 18 kW
Maximum log length	80 cm
Colour choices	● P912944

PRESTON

NEW VERSION



The Preston cast-iron stove is simple and modern. With its rectangular shape, it can easily be raised on a bench (offered separately) or on a concrete slab. Optional bench sold separately in 2 sizes.

H 610 x W 910 x D 468 mm - Flue diameter 180 mm. Flue exit : Top or Rear. (Comparative tables : p92)



Heating surface	65 - 145 m ²
Optimal heat output	12 kW
Wood consumption	4 kg wood / h
Heat output adjustment	8 - 18 kW
Maximum log length	80 cm
Colour choices	P912804



TECHNICAL DATA



P64213X
ALTARA
PLUG IN Auto



P64901X
ARATOS
PLUG IN Auto



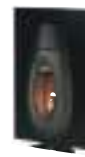
P64215X
CANNELE
PLUG IN Auto



P64211X
OVE
PLUG IN Auto



P649000
ARATOS
PLUG IN Hybrid



P642100
OVE
PLUG IN

Page	19	19	16	16	20	20
Designation	PLUG-IN	PLUG-IN	PLUG-IN	PLUG-IN	PLUG-IN	PLUG-IN

DIMENSIONS AND WEIGHT

Height	1300	1300	1300	1300	1300	1300
Width	780	780	780	780	800	800
Depth	600	642	658	642	602	610
Flue diameter	80	80	80	80	150	130
Flue location	Left or right on top of the hopper				Top	Top
Flue exit height from floor	-	-	-	-	-	-
Hopper capacity / Log length	-	-	-	-	40	-
Weight (kg)	150	137	157	150	163	157

HEATING PERFORMANCE

Optimal heat output (kW) ¹	7	7	7	7	7	6
Heat output adjustment ²	3 - 7	3 - 7	3 - 7	3 - 7	3,5 - 6	3,5 - 6
Efficiency (%) ³	88 - 90	88 - 90	88 - 90	88 - 90	75	80 - 85
CO level (%) ⁴	0,02 - 0,04	0,02 - 0,04	0,02 - 0,04	0,02 - 0,04	0,09	0,04 - 0,06
CO level (mg/Nm ³) ⁵	250 - 500	250 - 500	250 - 500	250 - 500	1125	500 - 750
Dust (mg/Nm ³) ⁶	30	30	30	30	31	61
VOC (mg/Nm ³) ⁷	9	9	9	9	166	7
NOx (mg/Nm ³) ⁸	140	140	140	140	80	78
Eco Design 2022 / EEL ⁹	No / 123	No / 123	No / 123	No / 123	No / 100	No / 117
Flamme verte ¹⁰ / Ecolabel	7 ★ / A+	7 ★ / A+	7 ★ / A+	7 ★ / A+	7 ★ / A	- / A+
Air-tight (Passive houses) ¹¹	-	-	-	-	-	-
Direct Air-supply	-	-	-	-	-	-
Autonomy Extended burning ¹²	13 - 31 h	13 - 31 h	13 - 31 h	13 - 31 h	Pellets 14 - 27 h Wood 8 h	14 - 27 h
Heating volume (m ³) ¹³	65/210	65/210	65/210	65/210	100/210	80/180
Heating surface (m ²) ¹⁴	25/85	25/85	25/85	25/85	40/85	30/70
Post combustion system ¹⁵	No	No	No	No	No	No
Adjustable secondary air ¹⁶	Yes	Yes	Yes	Yes	Yes	Yes
Warranty ¹⁷	2 years	2 years	2 years	2 years	2 years	2 years
Standard	EN 14785	EN 14785	EN 14785	EN 14785	EN 13240 BlmSchV2	EN 14785
Finish	Anthracite	Anthracite	Anthracite	Anthracite	Anthracite	Anthracite



TECHNICAL DATA



P619034
AKIMIX
Spring



P649544
CAROLO
MIX



P912904
AARON



P610744
ALCOR Direct
Air-supply



P610844
ALTAIS Direct
Air-supply



P610344
ALTARA Direct
Air-supply

Page	21	21	58	29	29	33
Designation	Hybrid woodburners	Hybrid woodburners	Woodburners	Woodburners	Woodburners	Woodburners

DIMENSIONS AND WEIGHT

Height	851	690	610	1200	1150	1050
Width	766	799	910	450	530	450
Depth	372	434	481	450	530	450
Flue diameter	150	150	180	150	150	150
Flue location	Top or Rear	Top	Top	Top	Top	Top
Flue exit height from floor	697	-	-	-	-	-
Hopper capacity / Log length	38	35	80	33	33	33
Weight (kg)	181	146	185	198	183	135

HEATING PERFORMANCE

Optimal heat output (kW) ¹	7	7	12	6	6	7
Heat output adjustment ²	3,5 - 6,5	3,5 - 6,5	8 - 18	4 - 9	4 - 9	4,5 - 10,5
Efficiency (%) ³	76	76	75	77	77	79
CO level (%) ⁴	0,10	0,10	0,09	0,10	0,10	0,07
CO level (mg/Nm ³) ⁵	1250	1250	1125	1250	1250	875
Dust (mg/Nm ³) ⁶	26	26	40	14	14	10
VOC (mg/Nm ³) ⁷	120	120	120	68	68	70
NOx (mg/Nm ³) ⁸	104	104	200	200	200	120
Eco Design 2022 / EEL ⁹	Yes / 101	Yes / 101	Yes / 99	No / 103	No / 103	Yes / 106
Flamme verte ¹⁰ / Ecolabel	7 ★ / A	7 ★ / A	7 ★ / A	7 ★ / A	7 ★ / A	7 ★ / A
Air-tight (Passive houses) ¹¹	-	-	-	x	x	-
Direct Air-supply	-	-	-	Yes - ø80 mm	Yes - ø80 mm	Yes - ø80 mm
Autonomy Extended burning ¹²	Pellets 8 - 17 h Wood 8 h	Pellets 8 - 17 h Wood 8 h	Intermittent	8 h	8 h	8 h
Heating volume (m ³) ¹³	100/210	100/210	160/360	80/180	80/180	100/210
Heating surface (m ²) ¹⁴	40/85	40/85	65/145	30/70	30/70	40/85
Post combustion system ¹⁵	Yes	Yes	No	Yes	Yes	Yes
Adjustable secondary air ¹⁶	Yes	Yes	Yes	Yes	Yes	Yes
Warranty ¹⁷	5 years	5 years	5 years	5 years	5 years	5 years
Standard	EN 13240 BlmSchV2	EN 13240 BlmSchV2	EN13240 BlmSchV2	EN13240 BlmSchV2	EN13240 BlmSchV2	EN13240 BlmSchV2
Finish	Anthracite	Anthracite	Anthracite	Anthracite	Anthracite	Anthracite



TECHNICAL DATA



P916644

ALTEA



P918644

ANGOR



P611444

ANTAYA



P645344

ARATOS



P915144

ARGOS



P91734X

BRADFORD

Page	36	50	53	35	56	39
Designation	Woodburners	Woodburners	Woodburners	Woodburners	Woodburners	Woodburners

DIMENSIONS AND WEIGHT

Height	744	770	868	1050	1220	690
Width	644	820	1051	527	532	-
Depth	547	471	480	453	444	579
Flue diameter	150	150	180	150	180	150
Flue location	Top or Rear	Top or Rear	Top	Top	Top	Top or Rear
Flue exit height from floor	616	608	-	-	-	509
Hopper capacity / Log length	50	66	71	40	40	54
Weight (kg)	133	153	188	123	169	167

HEATING PERFORMANCE

Optimal heat output (kW) ¹	8	12	12	8	12	9
Heat output adjustment ²	5 - 12	8 - 18	8 - 18	5 - 12	8 - 18	6 - 13,5
Efficiency (%) ³	75	77	77	78	75	75
CO level (%) ⁴	0,12	0,10	0,1	0,07	0,10	0,10
CO level (mg/Nm ³) ⁵	1500	1250	1250	875	1250	1250
Dust (mg/Nm ³) ⁶	40	40	30	35	39	40
VOC (mg/Nm ³) ⁷	120	75	70	60	120	120
NOx (mg/Nm ³) ⁸	200	120	160	85	200	200
Eco Design 2022 / EEL ⁹	Yes / 100	Yes / 103	Yes / 103	Yes / 104	Yes / 100	Yes / 100
Flamme verte ¹⁰ / Ecolabel	7 ★ / A	7 ★ / A	7 ★ / A	7 ★ / A	7 ★ / A	7 ★ / A
Air-tight (Passive houses) ¹¹	-	-	-	-	-	-
Direct Air-supply	-	-	-	-	-	-
Autonomy Extended burning ¹²	8 h	8 h	8 h	8 h	8 h	8 H
Heating volume (m ³) ¹³	105/240	160/360	160/360	105/240	160/360	125/275
Heating surface (m ²) ¹⁴	40/100	65/145	65/145	40/100	65/145	50/110
Post combustion system ¹⁵	Yes	Yes	Yes	Yes	Yes	Yes
Adjustable secondary air ¹⁶	Yes	Yes	Yes	Yes	Yes	Yes
Warranty ¹⁷	5 years	5 years	5 years	5 years	5 years	5 years
Standard	EN13240	EN13240 BlmSchV2	EN13240 BlmSchV2	EN13240 BlmSchV2	EN13240 BlmSchV2	EN13240 BlmSchV2
Finish	Anthracite	Anthracite	Anthracite	Anthracite	Anthracite	Anthracite, Ivory, Red



TECHNICAL DATA



P648144

BRIO Direct
Air-Supply



P648114

BRIO
ON PEDESTAL
Direct Air-Supply



P648803

CALCIAS



P916244

CAROLO



P616249

CAROLO ZEN
Direct
Air-supply



P614744

CASSINE

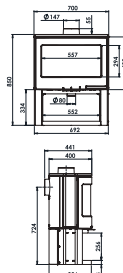
Page	24	25	40	39	38	44
Designation	Woodburners	Woodburners	Woodburners	Woodburners	Woodburners	Woodburners

DIMENSIONS AND WEIGHT

Height	717	1150	850	690	751	950
Width	853	853	700	600	600	513
Depth	532	532	400	378	428	415
Flue diameter	150	150	150	150	150	150
Flue location	Top	Top	Top or Rear	Top	Top	Top
Flue exit height from floor	-	-	724	-	-	-
Hopper capacity / Log length	50	50	50	56	56	40
Weight (kg)	118	138	145	105	111	103

HEATING PERFORMANCE

Optimal heat output (kW) ¹	7	7	9	8	8	10
Heat output adjustment ²	4,5 - 10,5	4,5 - 10,5	6 - 11,5	5 - 12	5 - 12	6,5 - 15
Efficiency (%) ³	76	76	77	77	77	76
CO level (%) ⁴	0,10	0,10	0,10	0,10	0,10	0,09
CO level (mg/Nm ³) ⁵	1250	1250	1250	1250	1250	1125
Dust (mg/Nm ³) ⁶	40	40	20	30	30	27
VOC (mg/Nm ³) ⁷	120	120	70	70	70	70
NOx (mg/Nm ³) ⁸	200	200	160	160	160	160
Eco Design 2022 / EeI ⁹	Yes / 100	Yes / 100	Yes / 103	Yes / 103	Yes / 103	Yes / 101
Flamme verte ¹⁰ / Ecolabel	7 ★ / A	7 ★ / A	7 ★ / A	7 ★ / A	7 ★ / A	7 ★ / A
Air-tight (Passive houses) ¹¹	-	-	x	-	-	-
Direct Air-supply	Yes - ø60 mm	Yes - ø60 mm	Yes - ø80 mm	optional kit	Yes - ø80 mm	-
Autonomy Extended burning ¹²	8 h	8 h	Intermittent	8 h	8 h	8 h
Heating volume (m ³) ¹³	100/210	100/210	200	105/240	105/240	135/300
Heating surface (m ²) ¹⁴	40/85	40/85	80	40/100	40/100	55/120
Post combustion system ¹⁵	Yes	Yes	Yes	Yes	Yes	Yes
Adjustable secondary air ¹⁶	No	No	Yes	Yes	Yes	Yes
Warranty ¹⁷	5 years	5 years	5 years	5 years	5 years	5 years
Standard	EN13240 BlmSchV2	EN13240 BlmSchV2	EN13240 BlmSchV2	EN13240 BlmSchV2	EN13240 BlmSchV2	EN13240 BlmSchV2
Finish	Anthracite	Anthracite	Black	Anthracite	Anthracite	Anthracite



TECHNICAL DATA



P615614
CHAMANE
10



P615644
CHAMANE
14



P613744
CHATEL



P610248
ELO M Direct
Air-supply



P610244
ELO L Direct
Air-supply



P912744
ELTON

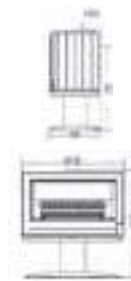
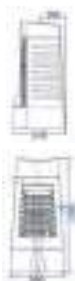
Page	45	45	36	26	27	58
Designation	Woodburners	Woodburners	Woodburners	Woodburners	Woodburners	Woodburners

DIMENSIONS AND WEIGHT

Height	1200	1200	803	880	920	930
Width	560	-	476	500	500	910
Depth	578	578	375	374	374	480
Flue diameter	180	180	150	150	150	180
Flue location	Top	Top	Top	Top	Top	Top or Rear
Flue exit height from floor	-	-	-	-	-	791
Hopper capacity / Log length	44	44	34	33	33	80
Weight (kg)	160	160	80	110	100	210

HEATING PERFORMANCE

Optimal heat output (kW) ¹	10	14	8	5	5	12
Heat output adjustment ²	6,5 - 15	9,5 - 21	5 - 12	3 - 7,5	3 - 7,5	8 - 18
Efficiency (%) ³	76	78,7	77	75	75	75
CO level (%) ⁴	0,09	0,05	0,09	0,09	0,09	0,09
CO level (mg/Nm ³) ⁵	1125	625	1125	1125	1125	1125
Dust (mg/Nm ³) ⁶	26	53	24	26	26	30
VOC (mg/Nm ³) ⁷	EEC	NA	60	120	120	70
NOx (mg/Nm ³) ⁸	EEC	NA	110	153	153	160
Eco Design 2022 / EEL ⁹	Yes / 101	No / 105	Yes / 103	Yes / 100	Yes / 100	Yes / 100
Flamme verte ¹⁰ / Ecolabel	7 ★ / A	- / A	7 ★ / A	7 ★ / A	7 ★ / A	7 ★ / A
Air-tight (Passive houses) ¹¹	-	-	-	x	x	-
Direct Air-supply	-	-	-	Yes - ø80 mm	Yes - ø80 mm	-
Autonomy Extended burning ¹²	8 h	8 H	8 h	8 h	8 h	8 h
Heating volume (m ³) ¹³	135/300	185/425	105/240	65/150	65/150	160/360
Heating surface (m ²) ¹⁴	55/120	75/170	40/100	25/60	25/60	65/145
Post combustion system ¹⁵	Yes	Yes	No	Yes	Yes	Yes
Adjustable secondary air ¹⁶	Yes	Yes	Yes	Yes	Yes	Yes
Warranty ¹⁷	5 years	5 years	5 years	5 years	5 years	5 years
Standard	EN13240 BlmSchV2	EN13240	EN13240 BlmSchV2	EN13240 BlmSchV2	EN13240 BlmSchV2	EN13240 BlmSchV2
Finish	Anthracite	Anthracite	Anthracite	White	Anthracite	Anthracite



TECHNICAL DATA



P64794X

FIFTY
Arche



P64804X

FIFTY
ON PEDESTAL



P64806X

FIFTY
ON PEDESTAL
Rear flue



P611844

GAYA
LEAF



P611744

GAYA
SLATE



P615844

GOMONT

Page	46	47	47	55	54	56
Designation	Woodburners	Woodburners	Woodburners	Woodburners	Woodburners	Woodburners

DIMENSIONS AND WEIGHT

Height	733	828	828	1300	1143	1103
Width	922	922	922	1213	1200	550
Depth	442	442	442	500	503	447
Flue diameter	150	150	150	180	180	150
Flue location	Top	Top	Top or Rear	Top	Top	Top
Flue exit height from floor	-	-	663	-	-	-
Hopper capacity / Log length	60	60	60	71	71	45
Weight (kg)	175	175	180	214	206	128

HEATING PERFORMANCE

Optimal heat output (kW) ¹	10	10	10	12	12	12
Heat output adjustment ²	6,5 - 15	6,5 - 15	6,5 - 15	8 - 18	8 - 18	8 - 18
Efficiency (%) ³	76	76	76	77	77	75
CO level (%) ⁴	0,08	0,08	0,08	0,1	0,1	0,10
CO level (mg/Nm ³) ⁵	1000	1000	1000	1250	1250	1250
Dust (mg/Nm ³) ⁶	31	31	31	30	30	39
VOC (mg/Nm ³) ⁷	118	118	118	70	70	120
NOx (mg/Nm ³) ⁸	80	80	80	160	160	200
Eco Design 2022 / EEL ⁹	Yes / 101	Yes / 101	Yes / 101	Yes / 103	Yes / 103	Yes / 100
Flamme verte ¹⁰ / Ecolabel	7 ★ / A	7 ★ / A	7 ★ / A	7 ★ / A	7 ★ / A	7 ★ / A
Air-tight (Passive houses) ¹¹	-	-	-	-	-	-
Direct Air-supply	-	-	-	-	-	-
Autonomy Extended burning ¹²	8 h	8 h	8 h	8 h	8 h	8 h
Heating volume (m ³) ¹³	135/300	135/300	135/300	160/360	160/360	160/360
Heating surface (m ²) ¹⁴	55/120	55/120	55/120	65/145	65/145	65/145
Post combustion system ¹⁵	Yes	Yes	Yes	Yes	Yes	Yes
Adjustable secondary air ¹⁶	Yes	Yes	Yes	Yes	Yes	Yes
Warranty ¹⁷	5 years	5 years	5 years	5 years	5 years	5 years
Standard	EN13240 BlmSchV2	EN13240 BlmSchV2	EN13240 BlmSchV2	EN13240 BlmSchV2	EN13240 BlmSchV2	EN13240 BlmSchV2
Finish	Anthracite, Ivory, Red	Anthracite, Ivory, Red	Anthracite, Ivory, Red	Anthracite	Anthracite	Anthracite



TECHNICAL DATA



P616944

ILOT Direct
Air-supply



P611044

ITAYA



P610644

IWAKI



P647844

KAORI



P647849

KAORI ZEN



P610444

KAZAN

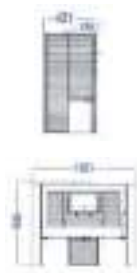
Page	37	54	33	40	41	43
Designation	Woodburners	Woodburners	Woodburners	Woodburners	Woodburners	Woodburners

DIMENSIONS AND WEIGHT

Height	716	815	850	740	749	768
Width	613	1051	372	754	754	652
Depth	619	431	394	404	404	372
Flue diameter	150	180	150	150	150	150
Flue location	Rear	Top	Top or Rear	Top or Rear	Top or Rear	Top or Rear
Flue exit height from floor	572	-	718	601	601	636
Hopper capacity / Log length	30	71	34	58	58	58
Weight (kg)	160	187	118	152	153	157

HEATING PERFORMANCE

Optimal heat output (kW) ¹	8	12	7	9	9	9
Heat output adjustment ²	5 - 12	8 - 18	4,5 - 10,5	6 - 13,5	6 - 13,5	6 - 13,5
Efficiency (%) ³	78	77	78	75	75	76
CO level (%) ⁴	0,04	0,1	0,08	0,10	0,10	0,08
CO level (mg/Nm ³) ⁵	500	1250	1000	1250	1250	1000
Dust (mg/Nm ³) ⁶	20	30	21	40	40	28
VOC (mg/Nm ³) ⁷	120	70	70	120	120	91
NOx (mg/Nm ³) ⁸	200	160	160	200	200	90
Eco Design 2022 / EEL ⁹	No / 104	Yes / 103	Yes / 104	Yes / 100	Yes / 100	Yes / 101
Flamme verte ¹⁰ / Ecolabel	7 ★ / A	7 ★ / A	7 ★ / A	7 ★ / A	7 ★ / A	7 ★ / A
Air-tight (Passive houses) ¹¹	-	-	-	-	-	-
Direct Air-supply	Yes - ø100 mm	-	-	-	-	-
Autonomy Extended burning ¹²	Intermittent	8 h	8 h	8 h	8 h	8 h
Heating volume (m ³) ¹³	105/240	160/360	100/210	125/275	125/275	125/275
Heating surface (m ²) ¹⁴	40/100	65/145	40/85	50/110	50/110	50/110
Post combustion system ¹⁵	No	Yes	Yes	Yes	Yes	Yes
Adjustable secondary air ¹⁶	No	Yes	Yes	Yes	Yes	Yes
Warranty ¹⁷	5 years	5 years	5 years	5 years	5 years	5 years
Standard	EN13240 BlmSchV2	EN13240 BlmSchV2	EN13240 BlmSchV2	EN13240 BlmSchV2	EN13240 BlmSchV2	EN13240 BlmSchV2
Finish	Anthracite	Anthracite	Anthracite	Anthracite	Anthracite	Anthracite



TECHNICAL DATA



P610443

KAZAN GA



P610449

KAZAN ZEN



P645444

LA BORNE 2



P614544

MAIRY



P918064

MANDOR



P613644

MESNIL

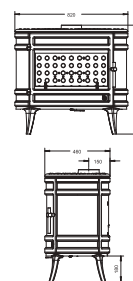
Page	43	42	34	44	51	36
Designation	Woodburners	Woodburners	Woodburners	Woodburners	Woodburners	Woodburners

DIMENSIONS AND WEIGHT

Height	768	778	684	1071	763	959
Width	652	660	548	524	820	486
Depth	372	395	400	426	460	385
Flue diameter	150	150	150	150	150	150
Flue location	Top or Rear	Top or Rear	Top	Top	Top	Top
Flue exit height from floor	636	636	-	-	-	-
Hopper capacity / Log length	58	58	45	40	66	34
Weight (kg)	162	158	89	107	133	88

HEATING PERFORMANCE

Optimal heat output (kW) ¹	9	9	7	10	12	8
Heat output adjustment ²	6 - 13,5	6 - 13,5	4,5 - 10,5	6,5 - 15	8 - 18	5 - 12
Efficiency (%) ³	76	76	78	76	77	77
CO level (%) ⁴	0,08	0,08	0,10	0,09	0,10	0,09
CO level (mg/Nm ³) ⁵	1000	1000	1250	1125	1250	1125
Dust (mg/Nm ³) ⁶	28	28	21	27	40	24
VOC (mg/Nm ³) ⁷	91	91	70	70	75	60
NOx (mg/Nm ³) ⁸	90	90	160	160	120	110
Eco Design 2022 / EEL ⁹	Yes / 101	Yes / 101	Yes / 104	Yes / 101	Yes / 103	Yes / 103
Flamme verte ¹⁰ / Ecolabel	7 ★ / A	7 ★ / A	7 ★ / A	7 ★ / A	7 ★ / A	7 ★ / A
Air-tight (Passive houses) ¹¹	-	-	-	-	-	-
Direct Air-supply	-	-	-	-	-	-
Autonomy Extended burning ¹²	8 h	8 h	8 h	8 h	8 h	8 h
Heating volume (m ³) ¹³	125/275	125/275	100/210	135/300	160/360	105/240
Heating surface (m ²) ¹⁴	50/110	50/110	40/85	55/120	65/145	40/100
Post combustion system ¹⁵	Yes	Yes	Yes	Yes	Yes	No
Adjustable secondary air ¹⁶	Yes	Yes	Yes	Yes	Yes	Yes
Warranty ¹⁷	5 years	5 years	5 years	5 years	5 years	5 years
Standard	EN13240 BlmSchV2	EN13240 BlmSchV2	EN13240 BlmSchV2	EN13240 BlmSchV2	EN13240 BlmSchV2	EN13240 BlmSchV2
Finish	Anthracite	Anthracite	Anthracite	Anthracite	Anthracite	Anthracite



TECHNICAL DATA



P614244
MOAÏ Direct
Air-supply



P91754X
MODENA



P912944
NELSON



P648837
NEOSEN
3-GLASS Direct
Air-supply



P648838
NEOSEN
Air-tight



P648836
NEOSEN Direct
Air-supply

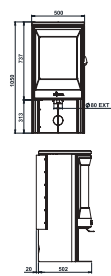
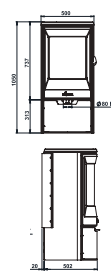
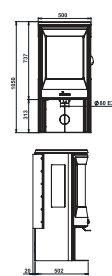
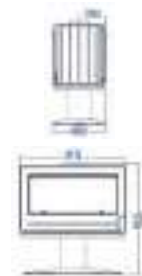
Page	34	46	58	30	31	31
Designation	Woodburners	Woodburners	Woodburners	Woodburners	Woodburners	Woodburners

DIMENSIONS AND WEIGHT

Height	1398	741	930	1050	1050	1050
Width	560	764	910	500	500	500
Depth	457	508	480	522	522	522
Flue diameter	180	150	180	150	150	150
Flue location	Top or Rear	Top or Rear	Top	Top	Top	Top
Flue exit height from floor	1233	562	-	-	-	-
Hopper capacity / Log length	35	50	80	40	40	40
Weight (kg)	240	170	201	145	145	145

HEATING PERFORMANCE

Optimal heat output (kW) ¹	8	10	12	6	6	6
Heat output adjustment ²	5 - 12	6,5 - 15	8 - 18	4 - 9	4 - 9	4 - 9
Efficiency (%) ³	77	77	75	> 75	> 75	> 75
CO level (%) ⁴	0,08	0,09	0,09	< 0,12	< 0,12	< 0,12
CO level (mg/Nm ³) ⁵	1000	1125	1125	1500	1500	1500
Dust (mg/Nm ³) ⁶	22	39	40	< 40	< 40	< 40
VOC (mg/Nm ³) ⁷	27	79	120	< 120	< 120	< 120
NOx (mg/Nm ³) ⁸	97	110	200	< 200	< 200	< 200
Eco Design 2022 / EeI ⁹	Yes / 103	Yes / 103	Yes / 99	Yes / EEC	Yes / EEC	Yes / EEC
Flamme verte ¹⁰ / Ecolabel	7 ★ / A	7 ★ / A	7 ★ / A	7 ★ / A	7 ★ / A	7 ★ / A
Air-tight (Passive houses) ¹¹	x	-	-	-	x	-
Direct Air-supply	Yes - ø100 mm	-	-	Yes - ø80 mm	Yes - ø80 mm	Yes - ø80 mm
Autonomy Extended burning ¹²	8 h	8 h	Intermittent	Intermittent	Intermittent	Intermittent
Heating volume (m ³) ¹³	105/240	135/300	160/360	80/180	80/180	80/180
Heating surface (m ²) ¹⁴	40/100	55/120	65/145	30/70	30/70	30/70
Post combustion system ¹⁵	Yes	Yes	No	Yes	Yes	Yes
Adjustable secondary air ¹⁶	Yes	Yes	Yes	No	No	No
Warranty ¹⁷	5 years	5 years	5 years	5 years	5 years	5 years
Standard	EN13240 BlmSchV2	EN13240 BlmSchV2	EN13240 BlmSchV2	EN13240	EN13240	EN13240
Finish	Anthracite	Anthracite, Grey, Ivory, Red	Anthracite	Black	Black	Black



TECHNICAL DATA



P696300
NEOSEN
Heat Store



P912144
NORIK



P610544
OKINO



P619444
ORENSE
CHROME Direct
Air-supply



P614904
OVATIO



P614944
OVE

Page	31	29	33	34	27	49
Designation	Woodburners	Woodburners	Woodburners	Woodburners	Woodburners	Woodburners

DIMENSIONS AND WEIGHT

Height	-	630	850	1000	1162	1310
Width	-	620	402	550	461	550
Depth	-	465	402	590	461	550
Flue diameter	-	150	150	150	130	180
Flue location		Top or Rear	Top	Top or Rear	Top	Top
Flue exit height from floor	-	500	-	862	-	-
Hopper capacity / Log length	-	50	34	38	32	33
Weight (kg)	-	104	112	192	137	167

HEATING PERFORMANCE

Optimal heat output (kW) ¹	-	6	7	8	5	10
Heat output adjustment ²	-	4 - 9	4,5 - 10,5	5 - 12	3 - 7,5	6,5 - 15
Efficiency (%) ³	-	78	78	76	83	76
CO level (%) ⁴	-	0,12	0,08	0,13	0,08	0,07
CO level (mg/Nm ³) ⁵	-	1500	1000	1625	1000	875
Dust (mg/Nm ³) ⁶	-	23	21	40	15	22
VOC (mg/Nm ³) ⁷	-	92	70	EEC	55	120
NOx (mg/Nm ³) ⁸	-	76	160	EEC	140	200
Eco Design 2022 / EeI ⁹	/ -	Yes / 103	Yes / 104	No / 101	Yes / 111	Yes / 101
Flamme verte ¹⁰ / Ecolabel	- / -	7 ★ / A	7 ★ / A	- / A	7 ★ / A+	7 ★ / A
Air-tight (Passive houses) ¹¹	-	-	-	x	-	-
Direct Air-supply	-	-	-	Yes - ø100 mm	-	-
Autonomy Extended burning ¹²	-	8 h	8 h	8 h	8 h	8 h
Heating volume (m ³) ¹³	-	80/180	100/210	105/240	65/150	135/300
Heating surface (m ²) ¹⁴	-	30/70	40/85	40/100	25/60	55/120
Post combustion system ¹⁵	No	Yes	Yes	Yes	Yes	Yes
Adjustable secondary air ¹⁶	No	Yes	Yes	No	Yes	Yes
Warranty ¹⁷	-	5 years	5 years	5 years	5 years	5 years
Standard	-	EN13240	EN13240 BlmSchV2	EN13240	EN13240 BlmSchV2	EN13240 BlmSchV2
Finish	Black	Anthracite	Anthracite	Chrome	Anthracite	Anthracite



TECHNICAL DATA



P915044
PHAROS
360



P615244
POW WOW



P912804
PRESTON



P94504X
SEDAN S



P91604X
SEDAN M



P91724X
SEDAN L

Page	56	57	59	28	48	51
Designation	Woodburners	Woodburners	Woodburners	Woodburners	Woodburners	Woodburners

DIMENSIONS AND WEIGHT

Height	1210	1895	610	580	701	770
Width	531	817	910	500	644	766
Depth	530	817	468	443	463	523
Flue diameter	180	200	180	150	150	180
Flue location	Top	Top	Top or Rear	Top	Top or Rear	Top or Rear
Flue exit height from floor	-	-	Depending on installation	-	556	616
Hopper capacity / Log length	40	50	80	30	42	60
Weight (kg)	167.5	194	179	84	126	164,5

HEATING PERFORMANCE

Optimal heat output (kW) ¹	12	14	12	5	10	12
Heat output adjustment ²	8 - 18	9,5 - 21	8 - 18	3 - 7,5	6,5 - 15	8 - 18
Efficiency (%) ³	75	76	75	78	75	75
CO level (%) ⁴	0,10	0,09	0,09	0,07	0,12	0,11
CO level (mg/Nm ³) ⁵	1250	1125	1125	875	1500	1375
Dust (mg/Nm ³) ⁶	39	10	30	20	40	40
VOC (mg/Nm ³) ⁷	120	50	70	100	120	75
NOx (mg/Nm ³) ⁸	200	200	160	160	200	120
Eco Design 2022 / EEL ⁹	Yes / 100	Yes / 101	Yes / 100	Yes / 104	Yes / 100	Yes / 100
Flamme verte ¹⁰ / Ecolabel	7 ★ / A	7 ★ / A	7 ★ / A	7 ★ / A	7 ★ / A	7 ★ / A
Air-tight (Passive houses) ¹¹	-	-	-	-	-	-
Direct Air-supply	-	-	-	-	-	-
Autonomy Extended burning ¹²	8 h	8 h	8 h	8 h	8 h	8 h
Heating volume (m ³) ¹³	160/360	185/425	160/360	65/150	135/300	160/360
Heating surface (m ²) ¹⁴	65/145	75/170	65/145	25/60	55/120	65/145
Post combustion system ¹⁵	Yes	Yes	Yes	Yes	Yes	Yes
Adjustable secondary air ¹⁶	Yes	Yes	Yes	Yes	Yes	Yes
Warranty ¹⁷	5 years	5 years	5 years	5 years	5 years	5 years
Standard	EN13240 BlmSchV2	EN13240 BlmSchV2	EN13240 BlmSchV2	EN13240 BlmSchV2	EN13240	EN13240
Finish	Anthracite	Anthracite	Anthracite	Anthracite, Grey, Ivory, Red	Anthracite, Ivory, Red	Anthracite, Ivory



TECHNICAL DATA



P61924X

SEVILLE 2



P611544

SYMPHONIA



P611344

THEIA



P615344

TIPI

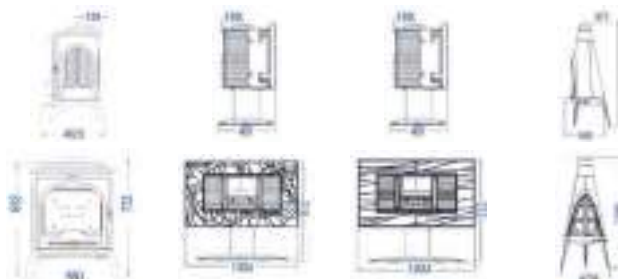
Page	32	52	52	48
Designation	Woodburners	Woodburners	Woodburners	Woodburners

DIMENSIONS AND WEIGHT

Height	692	913	913	1585
Width	560	1034	1034	754
Depth	462	491	491	754
Flue diameter	150	180	180	200
Flue location	Top	Top	Top	Top
Flue exit height from floor	-	-	-	-
Hopper capacity / Log length	40	71	71	40
Weight (kg)	99	199	220	143

HEATING PERFORMANCE

Optimal heat output (kW) ¹	7	12	12	10
Heat output adjustment ²	4,5 - 10,5	8 - 18	8 - 18	6,5 - 15
Efficiency (%) ³	77	77	77	78
CO level (%) ⁴	0,08	0,1	0,1	0,05
CO level (mg/Nm ³) ⁵	1000	1250	1250	625
Dust (mg/Nm ³) ⁶	29	30	30	32
VOC (mg/Nm ³) ⁷	110	70	70	50
NOx (mg/Nm ³) ⁸	110	160	160	200
Eco Design 2022 / EEL ⁹	Yes / 103	Yes / 103	Yes / 103	Yes / 104
Flamme verte ¹⁰ / Ecolabel	7 ★ / A	7 ★ / A	7 ★ / A	7 ★ / A
Air-tight (Passive houses) ¹¹	-	-	-	-
Direct Air-supply	-	-	-	-
Autonomy Extended burning ¹²	8 h	8 h	8 h	8 h
Heating volume (m ³) ¹³	100/210	160/360	160/360	135/300
Heating surface (m ²) ¹⁴	40/85	65/145	65/145	55/120
Post combustion system ¹⁵	Yes	Yes	Yes	Yes
Adjustable secondary air ¹⁶	Yes	Yes	Yes	Yes
Warranty ¹⁷	5 years	5 years	5 years	5 years
Standard	EN13240 BlmSchV2	EN13240 BlmSchV2	EN13240 BlmSchV2	EN13240 BlmSchV2
Finish	Anthracite, Ivory, Red	Anthracite	Anthracite	Anthracite





INVICTA

On a tous droit au design

ZONE INDUSTRIELLE / LIEU DIT LA GRAVETTE - 08350 DONCHERY - FRANCE

Phone +33 9 71 08 11 39

invicta.fr