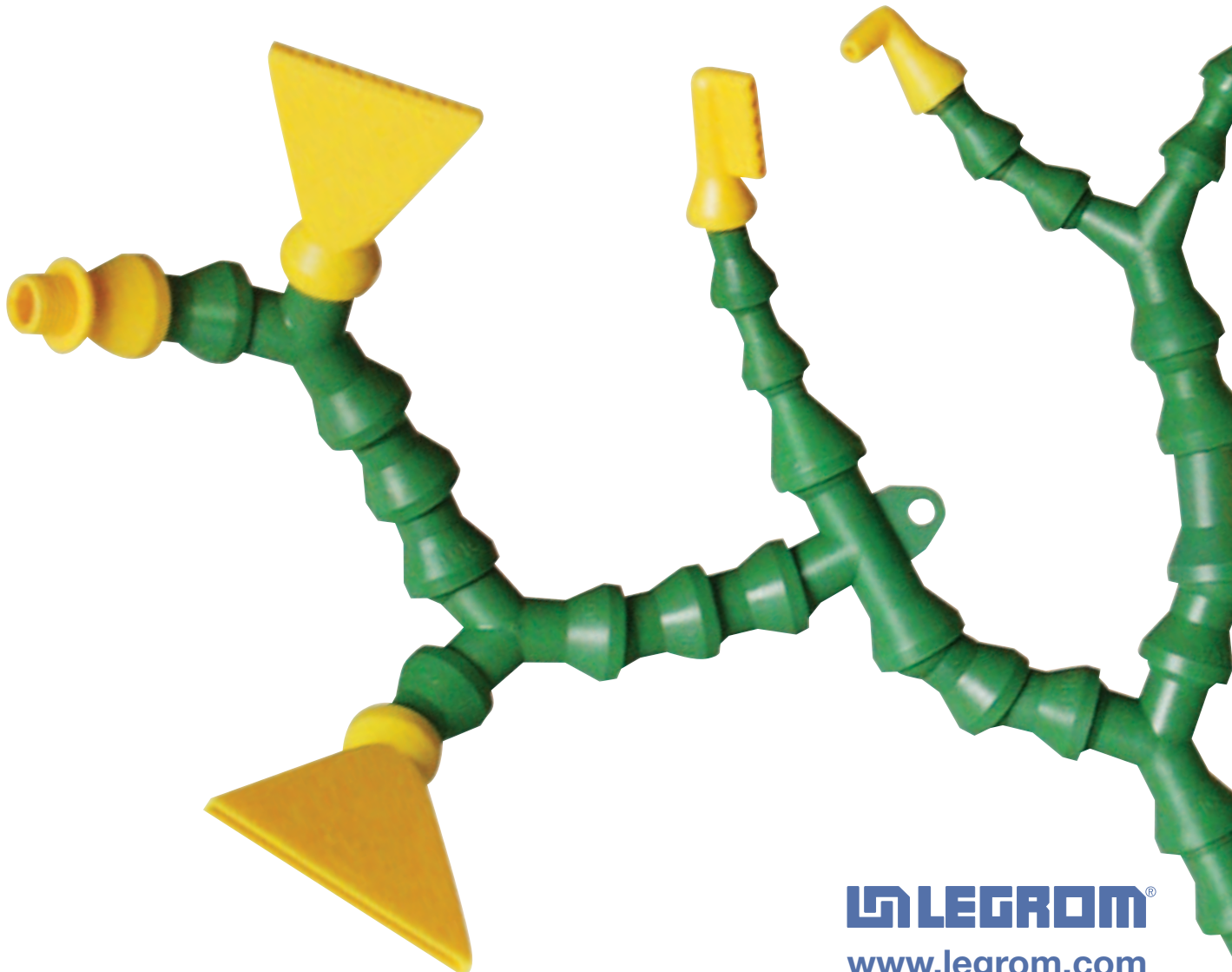




LEGROM  
**VARIO**  
SYSTEM®

**Keep cool!**  
**The flexible hose system**



 **LEGROM®**  
[www.legrom.com](http://www.legrom.com)



## Legrom-VARIO-System

**The unmistakable green and yellow or black and yellow segments of the Vario hose system are your guarantee of quick and easy integration with your production lines, machinery and other equipment.**

Just as the segments of our hose system can be instantly shaped for any purpose, our company quickly adapts to the needs of the market and the requirements of our customers.

For 20 years, we have been developing and distributing our high-quality, versatile and permanent solutions to a wide variety of industries and workplaces.

Rising demands for faster processing speeds, higher quality surfaces

and increased durability of equipment, coupled with constant cost pressures, necessitate systematic and targeted use of coolants and lubricants for:

**turning,  
drilling,  
grinding,  
milling and  
eroding.**

The **Vario System** can also be put to work to **blow away debris** during processing of workpieces and **remove fluids, dust or moisture and smoke** quickly and accurately.

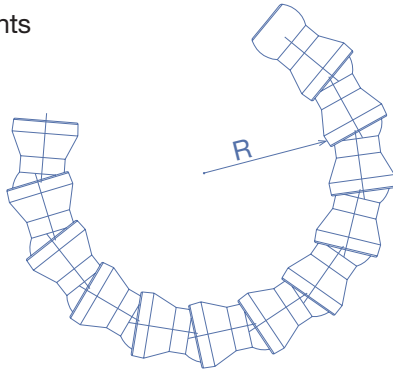
The versatility of our **hose system** really comes into its own for custom designs: Our development department's expertise in mold construction and plastics processing allows us to respond quickly and effectively to the unique requirements of our customers.

Ours goal is to find the most efficient - yet cost-effective solution - to every challenge we are set.



## One idea - 1000 solutions: Universal, flexible and precise

The **Legrom-Vario-System** is available in three sizes: 1/4", 1/2" and 3/4". All sizes can be combined using a variety of adapters and junctions, allowing one or more nozzles to be attached simultaneously. The flexibility of the individual components allows for tight curves and a myriad of shapes to suit your needs.



1/4" - segment



1/2" - segment



3/4" - segment

System	Bore diameter in mm	Flow rate in l/min	Max. pressure*	Minimum bend radius R
1/4"	7.0 mm	16 l/min	6 bar	R 29mm
1/2"	12.7 mm	32 l/min	6 bar	R 38mm
3/4"	18.5 mm	72 l/min	6 bar	R 45mm

\* Maximum pressure is dependent on various factors, such as hose length, nozzle size and bend radius (according to Legrom testing procedures).



**Benefit from the versatility and many advantages of the Legrom Vario System.**

**With our range of hose components, nozzles, threaded connectors, valves, couplings and junctions, you are sure to find the right combination for your application.**



#### **Stable positioning**

The extreme stability of the joints guarantees that the **Vario System** stays in position even during pressure surges and heavy vibration of machinery.

#### **Resistant**

Pressure resistant up to 6 bar for liquids and gases for standard applications and up to 15 bar in conjunction with our liner, a special inner hose that runs between the outer segments.

#### **High-quality plastic**

All **Vario System components** are manufactured from high-quality POM in our own injection-molding plant.

This material has been selected for its excellent stability and stiffness when bent, as well as good elasticity and low tendency to creep.

#### **Vario System Parts**

are non-conductive, making them ideal for eroding machines.

#### **Maximum long-term usage temperature of 80°C and high chemical resistance**

Perfectly suited to lubricants, hydraulic fluids, coolants, fuels, ester, alcohol, ether and ketone.

#### **Service**

Our service team can identify the right combination of **Vario System parts** for your application. All standard components can be delivered within 24 or 48 hours. If required, we can assemble complete modules and manufacture custom sets to meet your needs.

#### **Quality assurance**

We are qualified according to DIN EN ISO 9001:2000, guaranteeing the high quality of the **Vario System**.

#### **Quick to assemble and dismantle**

Our unique assembly pliers make attaching and removing components quick and easy, allowing hoses to be extended or shortened at any time.

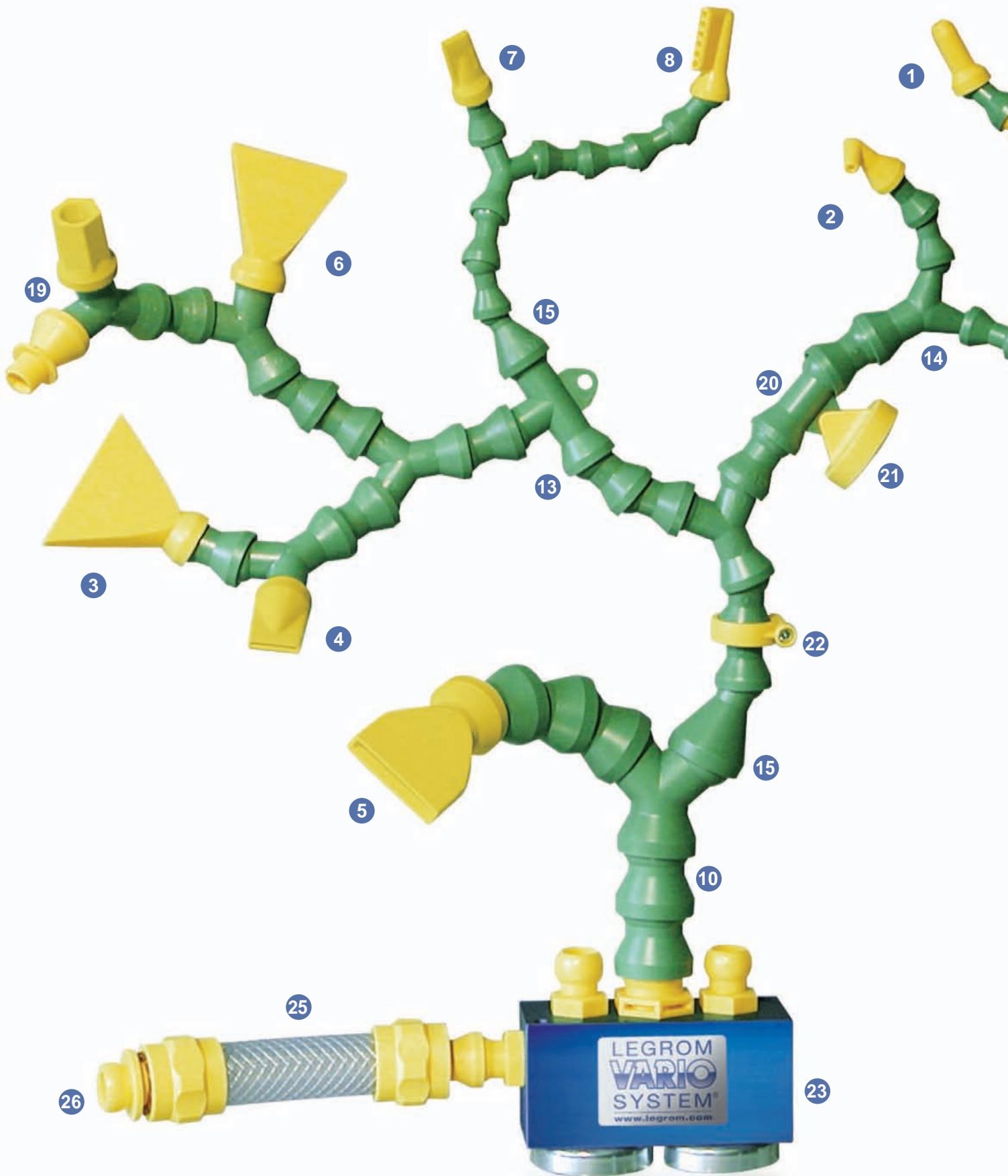
#### **Color selection**

Our standard range is available in green and yellow or black and yellow.

We can offer discounts on many system components for buyers ordering boxed units of 20 or 50 parts.



# VARIO – the intelligent system for transporting liquids and air



## to machine tools and production lines

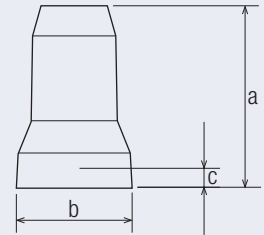


- |   |  |  |  |
|---|--|--|--|
| <b>1</b> Round nozzle<br>Page 8         | <b>10</b> Hoses<br>Page 10                             | <b>18</b> Couplings<br>Page 12                 | <b>27</b> Assembly pliers<br>Page 17             |
| <b>2</b> Elbow round nozzle<br>Page 8   | <b>11</b> Segment with spray hole<br>Page 10           | <b>19</b> Threaded adapters<br>Page 13         | <b>28</b> Loc-Line adapter<br>Page 17            |
| <b>3</b> Flare nozzle<br>Page 8         | <b>12</b> Valves<br>Page 11                            | <b>20</b> Segment with mounting lug<br>Page 13 | <b>29</b> Brass-plated valves<br>Page 17         |
| <b>4</b> Mini flare nozzle<br>Page 8    | <b>13</b> T- and elbow-fittings<br>Page 11             | <b>21</b> Mounting unit<br>Page 13             | <b>30</b> Brass-plated hose couplings<br>Page 18 |
| <b>5</b> Straight flow nozzle<br>Page 9 | <b>14</b> Y-fittings and Y-fitting-reducers<br>Page 11 | <b>22</b> Clamping ring with screws<br>Page 14 | Basic Set<br>Page 14                             |
| <b>6</b> Shower nozzle<br>Page 9        | <b>15</b> Reducers<br>Page 12                          | <b>23</b> Manifold block<br>Page 15            | Maxi Set<br>Page 14                              |
| <b>7</b> Mini shower nozzle<br>Page 9   | <b>16</b> Threaded liner with round nozzle<br>Page 12  | <b>24</b> Round manifold block<br>Page 15      | Basic Box<br>Page 16                             |
| <b>8</b> Elbow shower nozzle<br>Page 9  | <b>17</b> Double-threaded liner<br>Page 12             | <b>25</b> PVC hose<br>Page 15                  | Coolant equipment<br>Page 18                     |
| <b>9</b> Threaded connector<br>Page 10  |  | <b>26</b> PVC hose accessories<br>Page 16      |  |

## Round nozzles



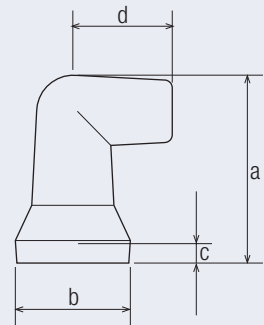
Opening in mm	a mm	b mm	c mm	Quantity	part-no. 1/4"	part-no. 1/2"	part-no. 3/4"
∅ 1.5	30.0	15.5	2.0	4	504-030	–	–
∅ 3.0	30.0	15.5	2.0	4	504-040	–	–
∅ 5.0	30.0	15.5	2.0	4	504-050	–	–
∅ 6.5	30.0	15.5	2.0	4	504-060	–	–
∅ 6.5	34.0	22.0	3.5	4	–	502-025	–
∅ 9.0	34.0	22.0	3.5	4	–	502-030	–
∅ 12.0	34.0	22.0	3.5	4	–	502-040	–
∅ 16.0	38.0	32.0	4.5	4	–	–	508-040
∅ 19.0	38.0	32.0	4.5	4	–	–	508-050



## Round elbow nozzles



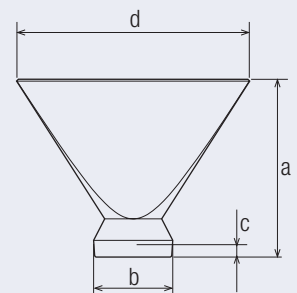
Opening in mm	a mm	b mm	c mm	d mm	Quantity	part-no. 1/4"	part-no. 1/2"	part-no. 3/4"
∅ 1.5	25.0	15.5	2.0	13.0	4	504-035	–	–
∅ 3.0	25.0	15.5	2.0	13.0	4	504-045	–	–
∅ 6.5	25.0	15.5	2.0	13.0	4	504-065	–	–
∅ 9.0	36.0	22.0	3.5	19.0	4	–	502-035	–
∅ 12.0	36.0	22.0	3.5	19.0	4	–	502-045	–



## Flare nozzles



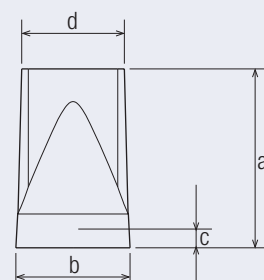
Opening in mm	a mm	b mm	c mm	d mm	Quantity	part-no. 1/4"	part-no. 1/2"	part-no. 3/4"
20.0 x 1.1	29.5	15.5	2.0	24.5	2	504-070	–	–
29.0 x 1.0	29.5	15.5	2.0	32.5	2	504-080	–	–
44.0 x 2.1	50.5	22.0	3.5	46.5	2	–	502-050	–
63.5 x 2.1	50.5	22.0	3.5	66.5	2	–	502-060	–
97.5 x 1.4	78.0	22.0	3.5	100.5	1	–	502-240	–
75.0 x 5.0	63.0	32.0	4.5	79.0	2	–	–	508-075



## Mini flare nozzles



Opening in mm	a mm	b mm	c mm	d mm	Quantity	part-no. 1/4"	part-no. 1/2"	part-no. 3/4"
12.0 x 1.0	29.0	15.5	2.0	12.5	4	504-078	–	–
12.0 x 1.5	29.0	15.5	2.0	12.5	4	504-079	–	–
18.0 x 2.0	34.0	22.0	3.5	19.5	4	–	502-061	–
18.0 x 3.2	34.0	22.0	3.5	19.5	4	–	502-062	–

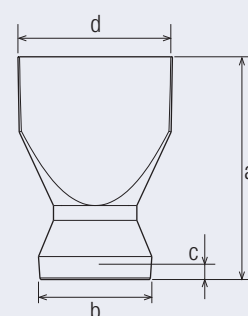




## Straight flow nozzle



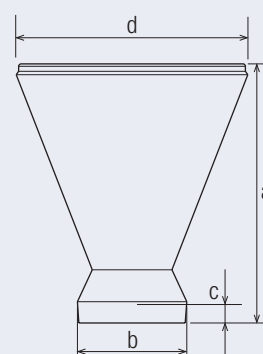
Opening in mm	a mm	b mm	c mm	d mm	Quantity	part-no. 1/4"	part-no. 1/2"	part-no. 3/4"
25.0 x 1.5	35.0	15.5	2.0	26.5	2	504-071	–	–
30.0 x 4.0	45.0	22.5	3.5	32.5	2	–	502-048	–
40.0 x 2.5	45.0	22.5	3.5	42.5	2	–	502-049	–
40.0 x 6.5	63.0	32.0	4.5	44.0	2	–	–	508-060



## Shower nozzles



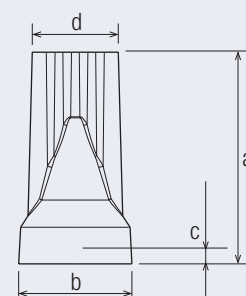
Opening in mm	a mm	b mm	c mm	d mm	Quantity	part-no. 1/4"	part-no. 1/2"	part-no. 3/4"
13 x $\varnothing$ 1.5	52.0	22.0	3.5	46.5	2	–	502-052	–



## Mini shower nozzles



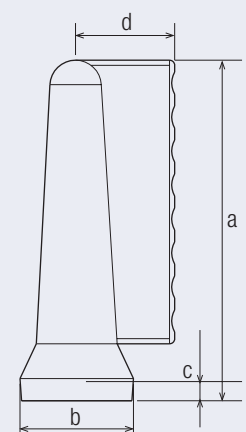
Opening in mm	a mm	b mm	c mm	d mm	Quantity	part-no. 1/4"	part-no. 1/2"	part-no. 3/4"
5 x $\varnothing$ 1.5	29.0	15.5	2.0	11.8	4	504-076	–	–
7 x $\varnothing$ 1.0	29.0	15.5	2.0	11.3	4	504-077	–	–
5 x $\varnothing$ 3.2	34.0	22.0	3.5	18.5	4	–	502-053	–
7 x $\varnothing$ 2.0	34.0	22.0	3.5	18.0	4	–	502-054	–



## Elbow shower nozzles



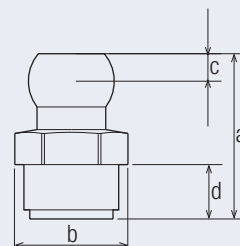
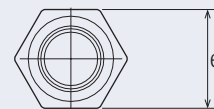
Opening in mm	a mm	b mm	c mm	d mm	Quantity	part-no. 1/4"	part-no. 1/2"	part-no. 3/4"
6 x $\varnothing$ 2.5	36.0	15.5	2.0	13.0	2	504-075	–	–
8 x $\varnothing$ 4.2	66.0	22.0	3.5	19.0	2	–	502-055	–



## Threaded connectors



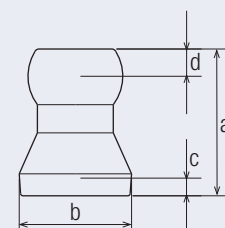
Thread	a mm	b mm	c mm	d mm	e mm	Quantity	part-no. 1/4"	part-no. 1/2"	part-no. 3/4"
R 1/8"	31.0	15.0	4.5	10.0	13.0	4	504-090	–	–
PT 1/8"	31.0	15.0	4.5	11.0	13.0	4	504-091	–	–
R 1/4"	31.0	19.5	4.5	10.0	17.0	4	504-110	–	–
PT 1/4"	31.0	16.0	4.5	11.0	14.0	4	504-111	–	–
M 10 x 1	31.0	15.0	4.5	10.0	13.0	4	504-120	–	–
R 3/8"	36.5	25.0	6.0	12.0	22.0	4	–	502-070	–
PT 3/8"	36.5	19.0	6.0	12.0	17.0	4	–	502-071	–
R 1/2"	36.5	25.0	6.0	12.0	22.0	4	–	502-080	–
PT 1/2"	36.5	25.0	6.0	12.0	22.0	4	–	502-081	–
R 3/4"	39.5	35.0	5.5	15.0	30.0	4	–	–	508-090
PT 3/4"	39.5	35.0	5.5	15.0	30.0	4	–	–	508-091



## Hoses



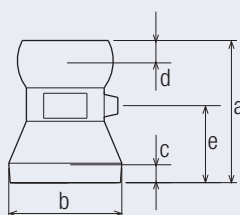
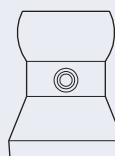
	a mm	b mm	c mm	d mm	Quantity	part-no. 1/4"	part-no. 1/2"	part-no. 3/4"
1/4" segment	26.0	16.0	2.0	4.5	1	504-010-1	–	–
Hose comprising 16 segments, approx. 320mm total length	–	–	–	–	1	504-010	–	–
1/2" segment	29.5	22.5	3.5	5.5	1	–	502-010-1	–
Hose comprising 15 segments, approx. 320mm total length	–	–	–	–	1	–	502-010	–
3/4" segment	34.0	32.0	4.5	5.5	1	–	–	508-010-1
Hose comprising 12 segments, approx. 320mm total length	–	–	–	–	1	–	–	508-010
320mm hoses	–	–	–	–	4	504-020	502-020	508-020
Orders by the meter	–	–	–	–	–	504-021	502-021	508-021



## Segments with spray holes



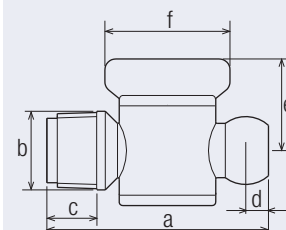
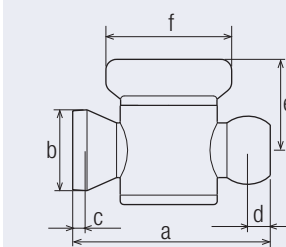
	a mm	b mm	c mm	d mm	e mm	Quantity	part-no. 1/4"	part-no. 1/2"	part-no. 3/4"
1/4" hose with spray holes 15 segments + 1 end cap	–	–	–	–	–	1	504-400	–	–
1/4" segment with 1.5mm spray hole	24.5	16.0	2.0	3.0	14.0	1	504-400-1	–	–
1/4" end cap	24.5	16.0	2.0	3.0	14.0	1	504-401	–	–
1/2" hose with spray holes 15 segments + 1 end cap	–	–	–	–	–	1	–	502-400	–
1/2" hose with spray holes	29.5	22.5	3.5	4.0	16.0	1	–	502-400-1	–
1/2" end cap	29.5	22.5	3.5	4.0	16.0	1	–	502-401	–



## Valves



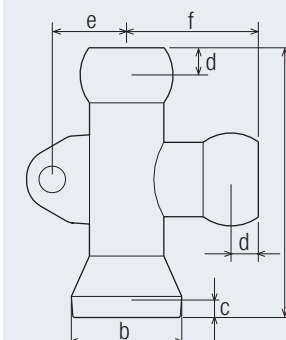
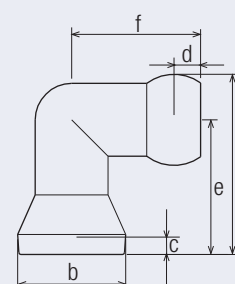
Thread	a mm	b mm	c mm	d mm	e mm	f mm	Quantity	part-no. 1/4"	part-no. 1/2"	part-no. 3/4"
not threaded	37.0	17.0	2.0	4.5	21.5	22.0	1	504-140	–	–
not threaded	55.0	22.5	3.5	6.0	25.5	35.0	1	–	502-130N	–
PT 1/4"	41.0	15.0	12.0	4.5	21.5	22.0	1	504-141	–	–
PT 1/2"	62.0	22.0	14.0	6.0	25.5	35.0	1	–	502-131N	–



## T- and elbow-fittings



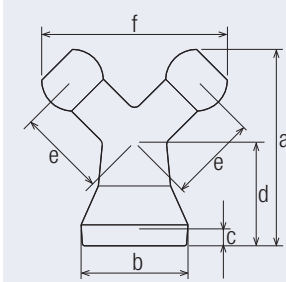
	a mm	b mm	c mm	d mm	e mm	f mm	Quantity	part-no. 1/4"	part-no. 1/2"	part-no. 3/4"
T-fitting	43.0	16.0	2.0	5.0	12.5	20.5	2	504-470	–	–
T-fitting	55.0	22.5	3.5	5.5	15.0	27.0	2	–	502-470	–
Elbow-fitting	28.0	16.0	2.0	5.0	20.5	22.0	2	504-480	–	–
Elbow-fitting	38.0	22.5	3.5	5.5	27.0	28.0	2	–	502-480	–



## Y-fittings and Y-fitting-reducers



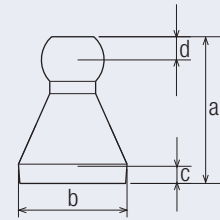
	a mm	b mm	c mm	d mm	e mm	f mm	Quantity	part-no. 1/4"	part-no. 1/2"	part-no. 3/4"
Y-fitting	38.5	16.0	2.0	20.5	16.5	36.5	2	504-130	–	–
Y-fitting	48.5	22.5	3.5	25.0	20.0	47.5	2	–	502-090	–
Y-fitting	55.0	32.0	4.5	25.0	24.5	60.5	2	–	–	508-130
Y-reducer, 1/2" to 2 x 1/4"	41.5	22.5	3.5	22.0	18.5	39.0	2	–	502-110	–
Y-reducer, 3/4" to 2 x 1/2"	51.0	32.0	4.5	25.0	23.5	52.5	2	–	–	508-110



## Reducers



Type	a mm	b mm	c mm	d mm	Quantity	part-no. 1/4"	part-no. 1/2"	part-no. 3/4"
1/2" to 1/4"	30.5	22.5	3.5	5.0	2	–	502-120	–
3/4" to 1/2"	44.0	32.0	4.5	6.0	2	–	–	508-120



## Threaded liner with round nozzle



Thread	Length mm	Nozzle ø in mm	Quantity	part-no. 1/4"	part-no. 1/2"	part-no. 3/4"
R 1/4"	380	5	1	504-310	–	–
R 1/8"	380	5	1	504-311	–	–
R 1/4"	610	5	1	504-320	–	–
R 1/8"	610	5	1	504-321	–	–
R 1/2"	380	9	1	–	502-310	–
R 3/8"	380	9	1	–	502-311	–
R 1/2"	610	9	1	–	502-320	–
R 3/8"	610	9	1	–	502-321	–

Available in any length

Pressure up to 15 bar

Inner hose diameter 1/4" : 3mm

Inner hose diameter 1/2" : 6mm

## Double-threaded liner



Thread 1	Thread 2	Length mm	Quantity	part-no. 1/4"	part-no. 1/2"	part-no. 3/4"
R 3/8"	R 1/2"	170	1	–	506-502-311-6	–

Available in any length

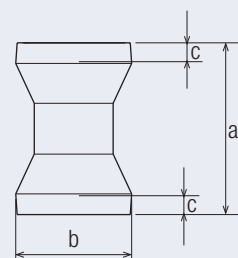
Inner hose diameter 8mm

Pressure up to 15 bar

## Couplings



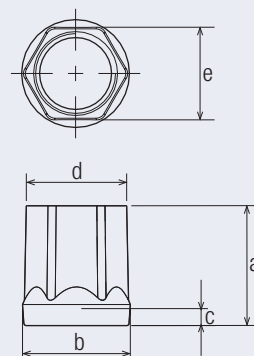
	a mm	b mm	c mm	Quantity	part-no. 1/4"	part-no. 1/2"	part-no. 3/4"
Socket-socket	27.5	16.0	2.0	2	504-260	–	–
Socket-socket	33.5	22.5	3.5	2	–	502-260	–



## Adapter with inner thread



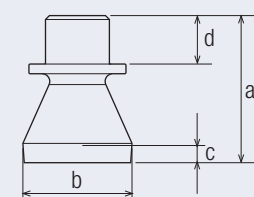
Socket	a mm	b mm	c mm	d mm	e mm	Quantity	part-no. 1/4"	part-no. 1/2"	part-no. 3/4"
1/4" with M8 inner thread	17.0	15.5	2.0	15.5	13.0	4	504-012	–	–
1/4" with 1/8" inner thread	17.0	15.5	2.0	14.5	13.0	4	504-013	–	–
1/2" with 1/4" inner thread	25.0	22.5	3.5	19.0	17.0	4	–	502-012	–
1/2" with 3/8" inner thread	25.0	22.5	3.5	21.5	19.0	4	–	502-015	–



## Adapter with outer thread



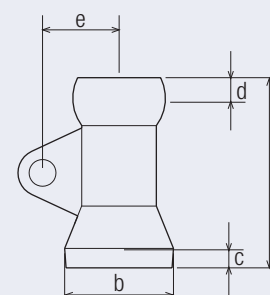
Socket	a mm	b mm	c mm	d mm	Quantity	part-no. 1/4"	part-no. 1/2"	part-no. 3/4"
1/2" with 1/4" outer thread	30.5	22.5	3.5	10.0	4	–	502-013	–



## Segment with mounting lug



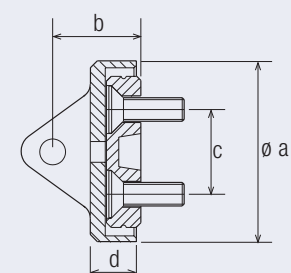
a mm	b mm	c mm	d mm	e mm	Quantity	part-no. 1/4"	part-no. 1/2"	part-no. 3/4"
36.0	16.0	2.0	4.5	12.5	2	504-150	–	–
39.0	22.5	3.5	4.0	15.5	2	–	502-140	–



## Mounting unit with magnet and plate with crews and segment with mounting lug



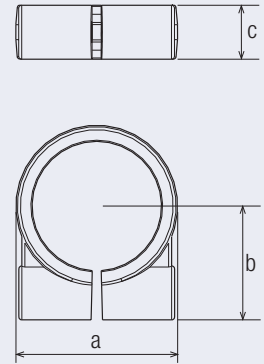
a mm	b mm	c mm	d mm	Quantity	part-no. 1/4"	part-no. 1/2"	part-no. 3/4"
38.5	19.0	18.0	10.0	1	504-160	–	–
38.5	19.0	18.0	10.0	1	–	502-160	–



## Clamping ring with screws



a mm	b mm	c mm	Quantity	part-no. 1/4"	part-no. 1/2"	part-no. 3/4"
19.5	16.0	9.0	4	504-165	–	–
27.0	19.0	9.0	4	–	502-165	–
38.5	27.5	11.0	4	–	–	508-165



## Basic Set

### Contents of 1/4" Basic Set:

- 1 x 320mm hose
- 1 x threaded connector R1/8", R1/4", M10x1
- 1 x round nozzle  $\varnothing$  1.5mm,  $\varnothing$  3mm,  $\varnothing$  5mm,  $\varnothing$  6.5mm

### Contents of 1/2" Basic Set:

- 1 x 320mm hose
- 1 x threaded connector R3/8", R1/2"
- 1 x round nozzle  $\varnothing$  9mm,  $\varnothing$  12mm

### Contents of 3/4" Basic Set:

- 1 x 320mm hose
- 2 x threaded connector R3/4"
- 1 x round nozzle  $\varnothing$  16mm,  $\varnothing$  19mm

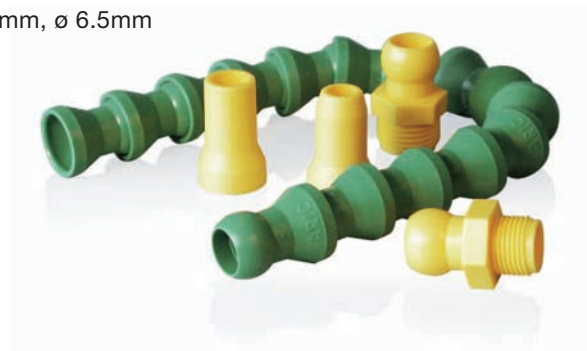


Image: 1/2" Basic Set

	Quantity	part-no. 1/4"	part-no. 1/2"	part-no. 3/4"
Basic Set	1	504-100	502-100	508-100

## Maxi Set

### Contents of 1/4" Maxi Set:

- 4 x 320mm hoses
- 4 x threaded connector R1/8", R1/4"
- 4 x round nozzle  $\varnothing$  1.5mm,  $\varnothing$  3mm,  $\varnothing$  6.5mm
- 1 x flare nozzle 29 x 1mm

### Contents of 1/2" Maxi Set:

- 4 x 320mm hoses
- 4 x threaded connector R3/8", R1/2"
- 4 x round nozzles  $\varnothing$  9.0mm,  $\varnothing$  12.0mm



Image: 1/2" Maxi Set

	Quantity	part-no. 1/4"	part-no. 1/2"	part-no. 3/4"
Maxi Set	1	504-900	502-900	–

## Manifold block

### 1/4" manifold block:

4 x threaded connector R1/4"  
2 x magnets

### 1/2" manifold block:

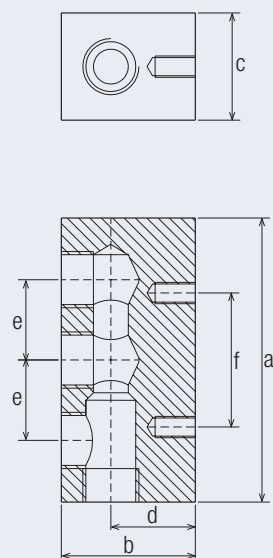
4 x threaded connector R1/2"  
2 x magnets

### 3/4" manifold block:

3 x threaded connector R3/4"  
2 x magnets



	a mm	b mm	c mm	d mm	e mm	f mm	Quantity	part-no. 1/4"	part-no. 1/2"	part-no. 3/4"
1/4" manifold Block	101.0	40.0	30.0	20.0	30.0	25.0	1	504-500	–	–
1/2" manifold block	106.0	50.0	40.0	31.5	30.0	50.0	1	–	502-500	–
3/4" manifold block	106.0	50.0	40.0	26.0	25.5	50.0	1	–	–	508-500



## Round manifold block

### 1/4" round manifold block:

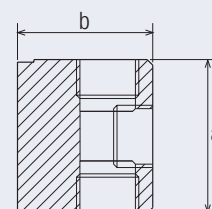
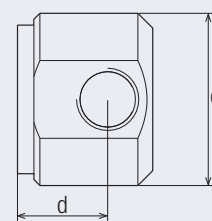
3 x inner threads 1/4"  
1 x threaded connector R1/4"  
1 x plug, 1 x magnet

### 1/2" round manifold block:

3 x inner threads 1/2"  
1 x threaded connector R1/2"  
1 x plug, 1 x magnet



	a mm	b mm	c mm	d mm	Quantity	part-no. 1/4"	part-no. 1/2"	part-no. 3/4"
1/4" round manifold block	51.5	45.5	58.0	25.0	1	504-510	–	–
1/2" round manifold block	51.5	45.5	58.0	30.5	1	–	502-510	–



## PVC hoses

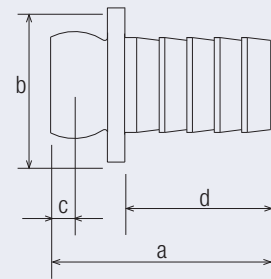
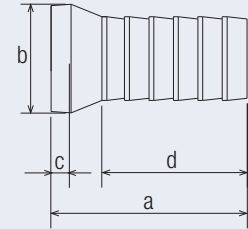


Hose diameter	Meters	part-no. 1/4"	part-no. 1/2"	part-no. 3/4"
∅ 9 x 2.0, not reinforced	1	504-230	–	–
∅ 9 x 3.0, fabric reinforced	1	504-240	–	–
∅ 16 x 2.0, not reinforced	1	–	502-220	–
∅ 16 x 4.0, fabric reinforced	1	–	502-230	–
∅ 19 x 3.0, not reinforced	1	–	–	508-230
∅ 19 x 3.5, fabric reinforced	1	–	–	508-240

## PVC hose accessories



	Quantity	a mm	b mm	c mm	d mm	part-no. 1/4"	part-no. 1/2"	part-no. 3/4"
Female hose connectors	4	30.0	15.5	2.0	19.0	504-180	–	–
Male hose connectors	4	30.0	18.0	4.0	19.0	504-190	–	–
Female hose connectors	4	39.0	22.0	3.5	29.0	–	502-170	–
Male hose connectors	4	39.0	28.0	4.5	26.0	–	502-180	–
9 x 2mm hose clamping rings	4	–	–	–	–	504-210	–	–
9 x 3mm hose clamping rings	4	–	–	–	–	504-220	–	–
16 x 2mm hose clamping rings	4	–	–	–	–	–	502-190	–
16 x 4mm hose clamping rings	4	–	–	–	–	–	502-210	–



## Basic Box

### Contents of 1/4" Basic Box:

3x hose of 320mm  
 1x valve without thread  
 2x round nozzle  $\varnothing$  1.5mm,  $\varnothing$  3mm,  $\varnothing$  6.5mm  
 1x elbow round nozzle  $\varnothing$  1.5mm,  $\varnothing$  3mm,  $\varnothing$  6.5mm  
 1x elbow shower nozzle 6 x  $\varnothing$  2.5mm  
 1x flare nozzle 20mm and 30mm  
 2x threaded connector R1/8" and R1/4"  
 1x mini shower nozzle 5 x  $\varnothing$  1.5mm and 7 x  $\varnothing$  1.0mm  
 1x mini flare nozzle 12 x 1.0mm and 18 x 3.2mm  
 1x Y-fitting  
 2x clamping rings  
 1x assembly pliers



### Contents of 1/2" Basic Box:

3x hoses 320mm  
 1x valve without thread  
 2x round nozzles  $\varnothing$  9mm and  $\varnothing$  12mm  
 1x elbow round nozzle  $\varnothing$  9mm and  $\varnothing$  12mm  
 1x shower nozzle 45mm  
 1x elbow shower nozzle 8 x  $\varnothing$  4.2mm

1x flare nozzle 45mm and 65mm  
 2x threaded connector R3/8" and R1/2"  
 1x mini shower nozzle 5 x  $\varnothing$  3.2mm and 7 x  $\varnothing$  2.0mm  
 1x mini flare nozzle 18 x 2.0mm and 18 x 3.2mm  
 1x Y-fitting  
 2x clamping rings  
 1x assembly pliers

	Quantity	part-no. 1/4"	part-no. 1/2"	part-no. 3/4"
Basic Box	1	504-802	502-802	–

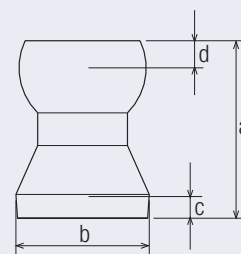
Image: 1/2" Basic Box



## Loc-Line adapter



	a mm	b mm	c mm	d mm	Quantity	part-no. 1/4"	part-no. 1/2"	part-no. 3/4"
1/4" adapter	26.5	16.0	2.0	5.0	1	504-999	–	–
1/2" adapter	31.0	25.5	4.0	4.0	1	–	502-999	–



## Assembly pliers

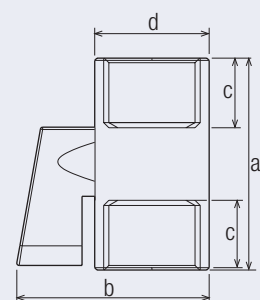
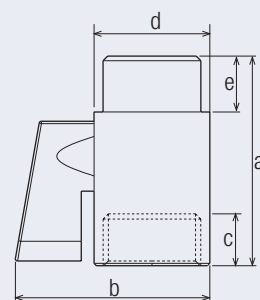


	Quantity	part-no. 1/4"	part-no. 1/2"	part-no. 3/4"
Assembly pliers	1	504-250	502-250	508-250

## Brass-plated valves



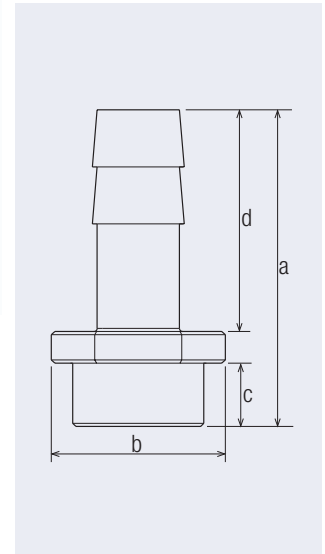
Thread	a mm	b mm	c mm	d mm	e mm	Quantity	part-no. 1/4"	part-no. 1/2"	part-no. 3/4"
2x 1/4" internal thread	40.0	27.5	9.0	21.0	–	1	504-142	–	–
2x 1/2" internal threads	46.0	30.0	10.5	25.0	–	1	–	502-132	–
2x 3/4" internal threads	54.0	46.5	13.5	30.0	–	1	–	–	508-140
1x 1/4" internal thread and 1x 1/4" external thread	39.0	27.5	9.0	21.0	9.0	1	504-143	–	–
1x 1/2" internal thread and 1x 1/2" external thread	45.0	30.0	10.5	25.0	10.5	1	–	502-133	–
1x 3/4" internal thread and 1x 3/4" external thread	51.0	46.5	13.5	30.0	13.5	1	–	–	508-141



## Brass-plated hose couplings



	a mm	b mm	c mm	d mm	Quantity	part-no. 1/4"	part-no. 1/2"	part-no. 3/4"
1/4" (for DN 9) SW17	35.0	19.5	9.0	21.0	1	504-181	–	–
1/2" (for DN 13) SW27	50.0	27.5	10.0	35.0	1	–	502-171	–
3/4" (for DN 19) SW32	60.0	35.5	16.0	36.0	1	–	–	508-150



## Coolant equipment



Underwater pump with tank,  
230V, 50Hz  
10m power cable.  
Standard **CE** safety plug  
(only in Germany)

part-no.	Outer dimensions mm	Max. power	Max. throughput	Max. pump lift	Tank
500-001	400x300x170	10 W	600 l/h (10 l/min)	1.5 m/WS	15 l
500-002	400x300x220	28 W	1.200 l/h (20 l/min)	2.0 m/WS	20 l
500-003	400x300x325	28 W	1.200 l/h (20 l/min)	2.0 m/WS	30 l

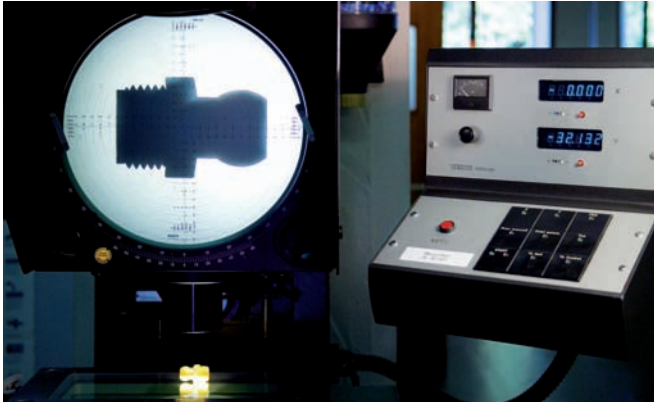


Top pump  
230/400V, 50Hz,  
0.12kW  
**CE**

part-no.	Outer dimensions mm	Max. throughput	Max. pump lift	Tank
500-004	600x400x170	2940 l/h (49 l/min)	5.0 m	30 l
500-005	600x400x200	2940 l/h (49 l/min)	5.0 m	40 l

If requested, spare pumps can be provided with all coolant equipment.

## We leave nothing to chance



Left: A profile projector checking the dimensions of a component



### The demands of our customers are our benchmark

Nothing is so good that it can't be improved. We and our customers come face to face with this challenge every day. The quality of our products and services is our top priority.

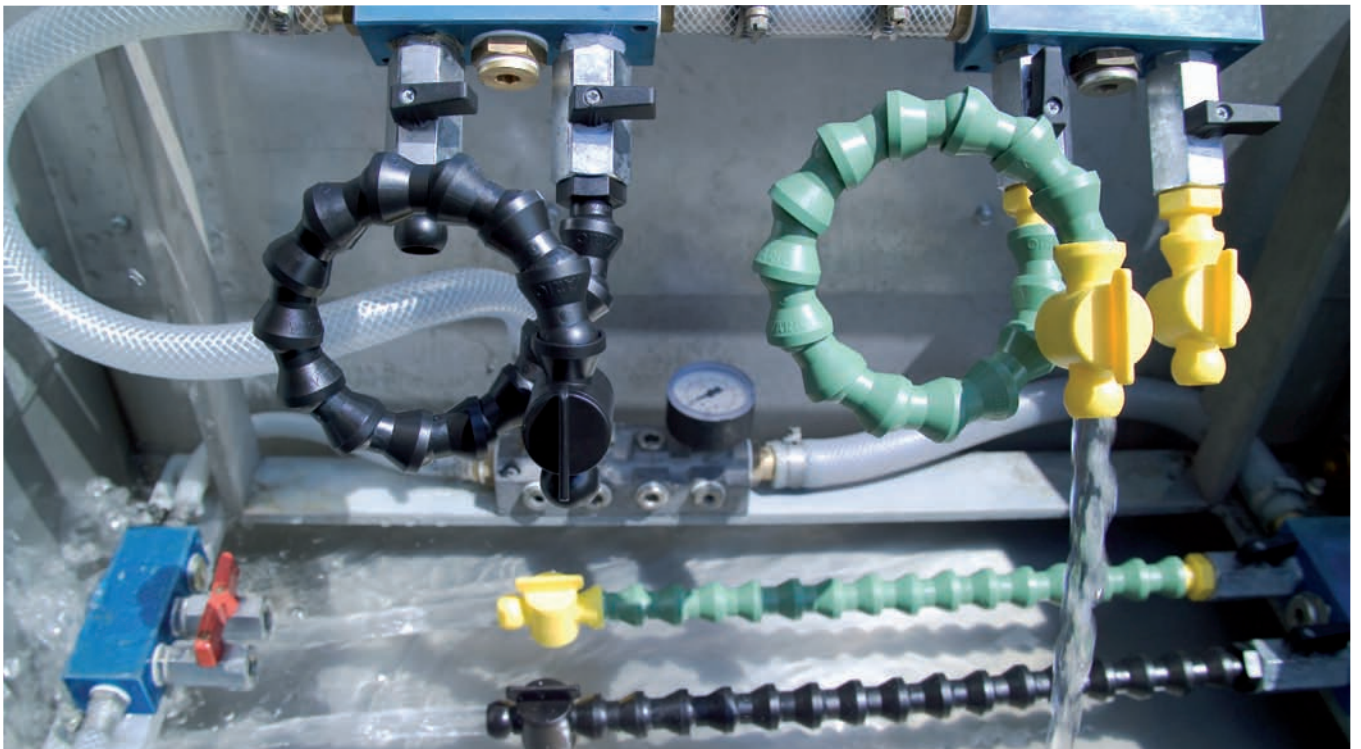
In order to satisfy the demands of the market for ever improving products, we are constantly working on identifying and imple-

menting solutions offering both technical and cost advantages.

Our team of highly skilled experts employs the latest computerized measuring and testing technology and provides comprehensive documentation to guarantee the consistent quality of our products and the satisfaction of our customers.



Below: Measuring pressure Above: Measuring stiffness





## ■ Plastics injection-molding

Thermoplastic processing  
Duroplast processing



## ■ Plastic cages

Pin bearing cage  
Angular roller bearing cages  
Linear bearing cages  
Axial bearing cage  
Ball bearing cage  
Slim ring bearing cages



## ■ Engineering/ Mold construction

Component and  
design development  
Injection mold  
Jig department



## ■ Replacement parts for textile machines

Knee and locking brakes and  
stainless steel transportation  
belts for ring spinning  
machines  
Custom parts as required



## ■ Product finishing and assembly

Ultrasound welding  
Hot embossing  
Printing  
Laser marking  
Flocking  
Metallizing



## ■ VARIO hose system

The variable hose system  
for precision delivery of air  
or cooling and drilling fluids

**LEGROM®**

Legrom GmbH  
Kolpingstraße 9  
74523 Schwäbisch Hall  
Tel.: +49 (0) 791 / 956688-0  
Fax.: +49 (0) 791 / 956688-10  
info@legrom.de  
www.legrom.com