

Input data

System of measurement		Metric
Input type		Coupling for electric motor
Input speed	[rpm]	1400
Output speed	[rpm]	14
Ratio (i=)		100
Frequency	[Hz]	50
Input options		IEC
Requested input power	[kW]	0.13
Service factor		1
Rated Power P1	[kW]	0.13

Output data

Gear unit	F RT 50 B3 100 63 B5 AC 25
------------------	-----------------------------------

Type		RT - Worm speed reducers
Input type		F (Elastic coupling)
Size		50
Ratio (i=)		100
Input flange		B5
Input speed	[rpm]	1400
Output speed	[rpm]	14
Rated output torque	[Nm]	41.68
Service Factor		1
Efficiency		0.47
Inertia moment	[kgm ²]	0.000047

Gear unit configuration

Output shaft		Hollow output shaft
Fixing		Universal
Version		B3

Output radial and axial loads

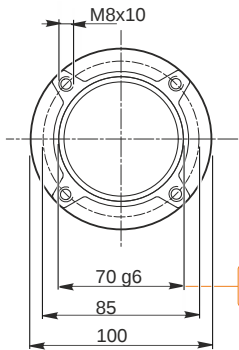
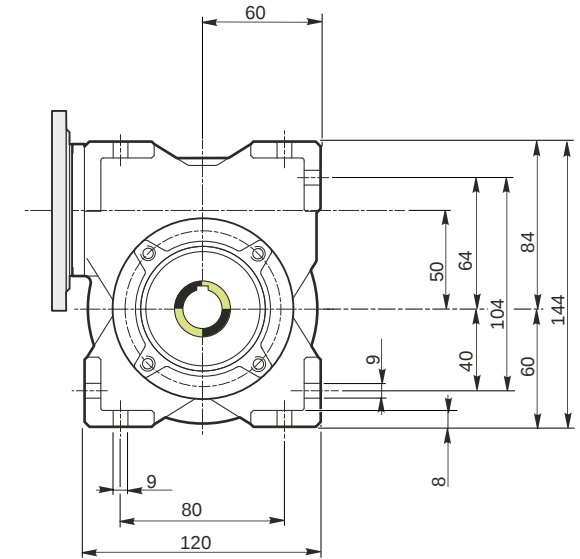
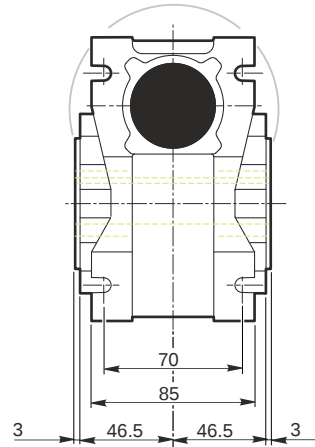
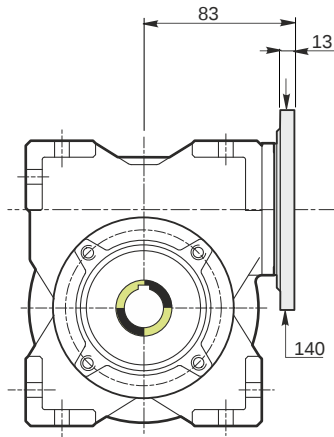
Ball bearings output radial load	[N]	3200
Taper bearings output radial load	[N]	4200
Ball bearings output axial load	[N]	640
Taper bearings output axial load	[N]	840

Accessories

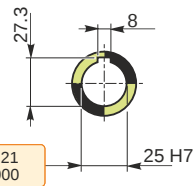
Hollow output shaft		AC 25
---------------------	--	-------

Electric motor coupling

Size		63 A4
Poles n.		4
Power	[kW]	0.13

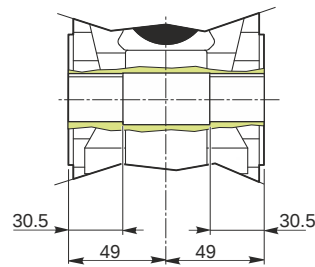


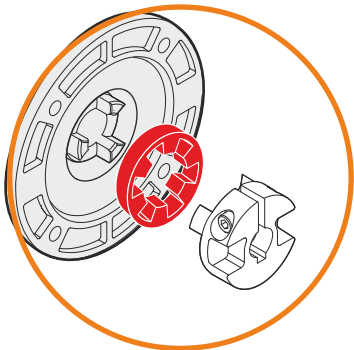
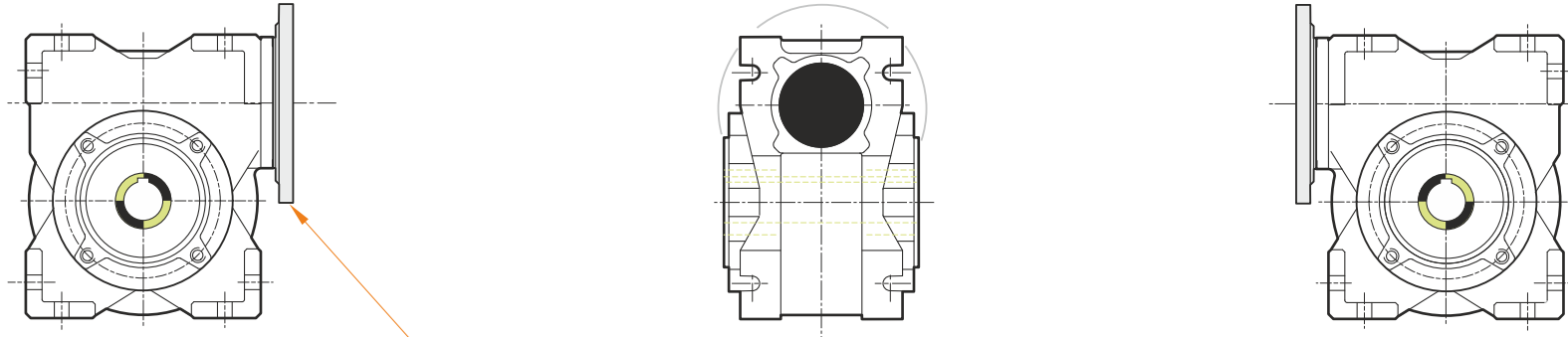
Hollow output shaft



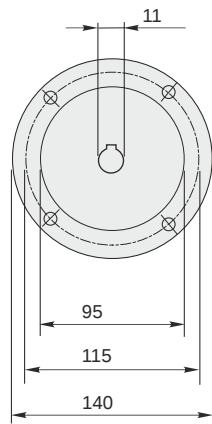
69.99
69.971

25.021
25.000





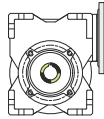
This gear unit is provided with an elastic coupling motor fitting



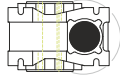
F RT 50 B3 100 63 B5 AC 25

Mounting positions

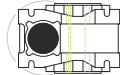
B3



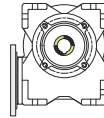
B6



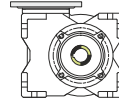
B7



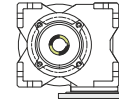
B8



V5



V6



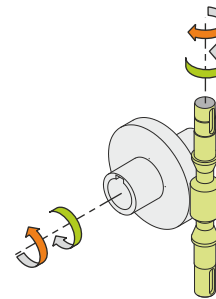
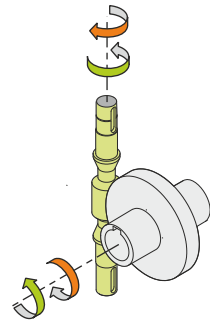
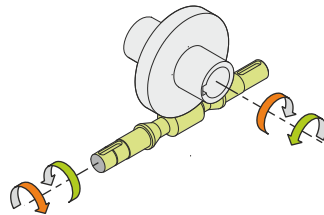
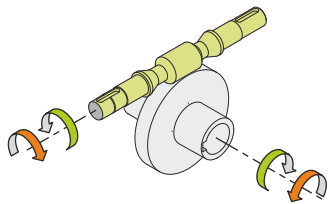
0.13



← Oil quantity [litres]

Lubricant type: Long life synthetic oil ISO VG320

Direction of rotation



Weight

Gear unit [kg] 3.8

Gearing data

Axial module 0.8
Number of starts 1
Lead angle 2° 17'
Pressure angle 20°

Backdriving

Static self-locking
No back-driving
Low dynamic back-driving