

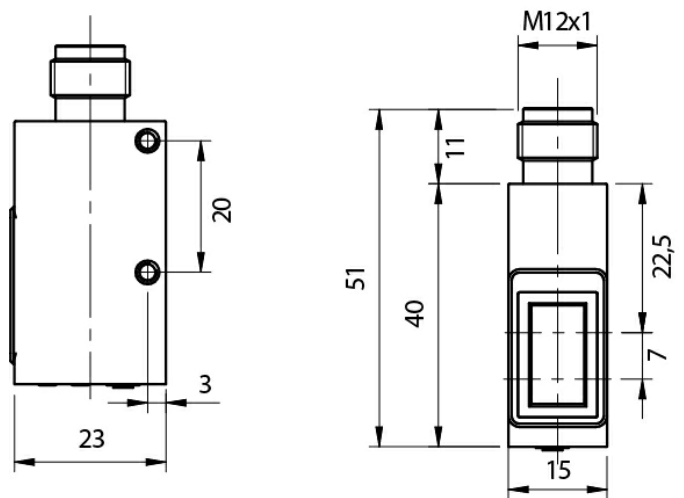


Indicative image



DC MINIATURIZED CUBIC PHOTOELECTRIC SENSORS

- Axial and right angle optics
- 2 LEDs (threshold and signal margin)
- Visible red light in retro-reflective, polarized and through-beam models
- Long distances capability
- Precision beam
- Fast response time (0,75-0,5 ms)
- NPN-PNP selectable output
- High output current (>300 mA)



Detection properties

Nominal sensing distance	300mm
Repeat Accuracy	≤ 5%
Sensitivity adjustment	1 turn trimmer

Application

Function Principle	Diffuse reflection (medium distance, ≤600mm)
Optic position	90°

Outputs

Output type	NPN/PNP Selectable
Output Function	NO
Switching frequency	750Hz

Electrical data

Operating Voltage	10...30Vdc
No-Load supply current	20mA max
Load current	≤ 300mA

Leakage current	≤ 100µA @ 30Vdc
Output voltage drop	1,2V max
Max ripple content	≤ 10%
Time delay before availability	200ms
Short-circuit protection	Yes
Reverse Polarity Protection	Yes
Emission	infrared (880nm)
Interference to external light	3000lux Incandescent Lamp, 10000lux

Mechanical data

Dimensions	15x23x44
Weight	70g
Housing Material	ABS
Connections	M12 plug
Active Head Material	Acrylic
Operating temperature	- 25°C...+ 70°C (without freeze)
Material	ABS
Diameter/Dimension	Cubic

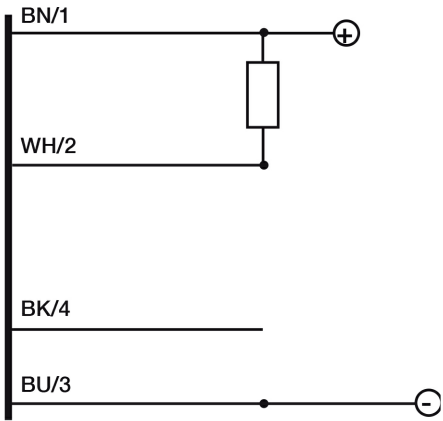
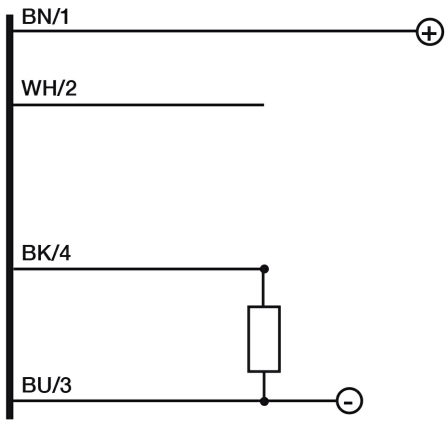
Test/Approvals

Approvals	CE
EMC compatibility	EN 60947-5-2
Shocks and vibrations	Vibration IEC 60068-2-6 / Shock IEC 60068-2-28
Degree of protection	IP65

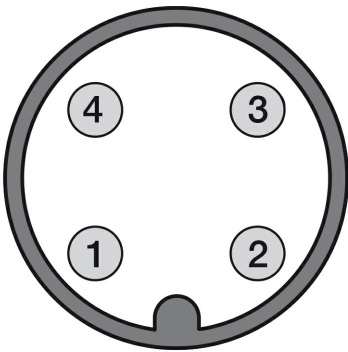
Accessories

Supplied Accessories	ST70 mounting brakets and screws
----------------------	----------------------------------

ELECTRICAL DIAGRAMS OF THE CONNECTIONS

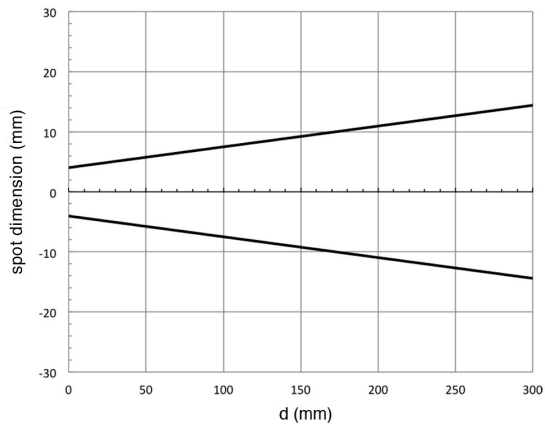


CONNECTOR

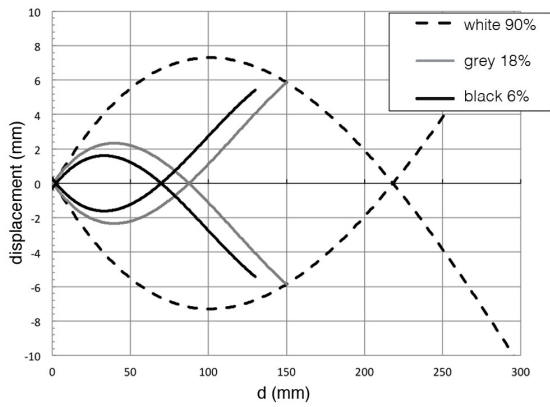


RESPONSE CURVES

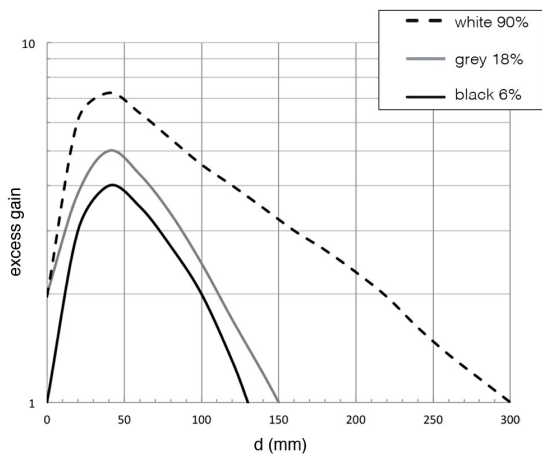
Dimensione Spot



Parallel offset



Excess of Earnings



Datasensing S.r.l.

Strada S.Caterina, 235
 41122 Modena (MO)
 Tel. 059 420411
 Fax 059 253973
 E-mail info@datasensing.com

date of printing

26/01/2022 15:17:36

