

DATA SHEET

SI 2052

Centrifugal pump

Sauermann® part #: SI2052SIUN23

Compatible with market standards

The versatile SI 2052 is suitable for replacement of some market standards drain pumps used in cassette type air-conditioning units up to 20 kW. The centrifugal technology inside this pump is specifically designed for removing condensates continuously, in any kind of environment, with a very low sound level. The single level detection unit can be used as a safety contact (NC) to cut off automatically the air conditioning system compressor or a solenoid valve.



Benefits



Humidity protection

- Overmolded cable.
- High resistance to pollution created by general environment.
- Capable of discharging small particles.
- Proven Reliability.



Large replacement compatibility

- Universal mounting bracket: allows the pump to replace many pumps on the market.
- Can replace plug & play the following Sauermann - KS1000 part numbers:

KS1001ERTH23	KS1001FDCH23	KS1001FSCH23
KS1001HACO23	KS1001PDIT23	KS1001SACO23
KS1001TATH23	KS1001TPMA23	KS1001VCIT23
KS1002ADAN23	KS1002SACO23	KS1006MQFR23



Low noise level

- Quiet in operation: 30 dBA.



Easy to install

- Small size.
- Wire-to-wire connector to make replacement hassle free.



Energy saving

- Improved motor efficiency reduces input power and energy consumption.



Kit content

- Centrifugal pump
- Overmolded 250 mm cable
- 850 mm cable with wire-to-wire connector
- High level safety detection unit (DET01550, 900 mm cable)
- Stainless steel screw for detection unit

Technical specification

Max. flow rate	100 l/h at 200 mm
Max discharge head	900 mm (flow rate = 24 l/h)
Sound level in application at 1 m: ≤ 30 dBA (Measured in Sauermann acoustic lab, pump operating with water)	
Mains supply	230 V~ 50 Hz - 14W
Insulation class	□ (double insulation)
Detection levels	Safety: 18 mm
Safety switch	NC 50VA resistive – 250 V
Thermal protection (overheating)	Impedance protected
Operating conditions	100 % - continuous duty (We recommend to use On/Off detection device)
Protection	IPX4
Pump dimensions	L 88 x W 75 x H 94 mm
Pump diameter	46 mm
Safety standards	CE & EAC
RoHS directive	Compliant
WEEE directive	Compliant
Packaging	0.60 kg - L 112 x W 91 x H 91 mm
Masterpack	25 pieces





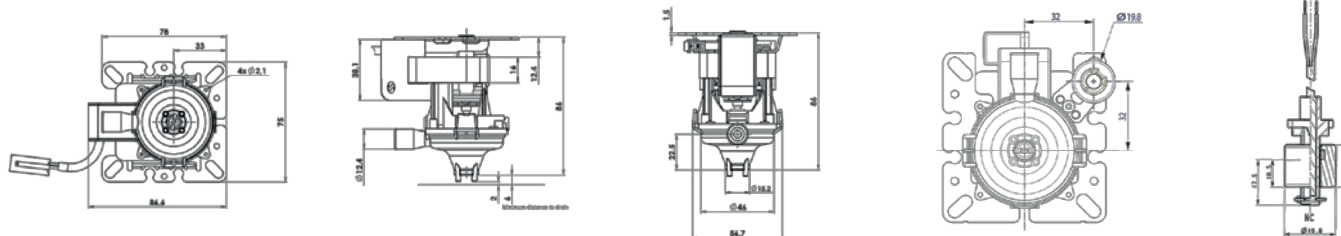
Applications

For use with any air-conditioning units up to 20 kW:

- Cassette type - 4 ways, 2 ways, 1 way
- Ceiling suspended
- Ducted

Accessories

Name	#Part
 Clear PVC hose Ø int. 10 mm (3/8")	ACC00911: 25 m ACC00915: Braided, 25 m
 Check valves with rubber elbow for hose Ø int. 10 mm (3/8")	ACC00802: 57 mm ACC00806: 42 mm (radius)



Actual flow rates (l/h)

Discharge head	Total hose length using (Ø int. 10 mm, 3/8")	
	Maximal immersion (20 mm)	
200 mm	100	
400 mm	90	
600 mm	60	
800 mm	38	
900 mm	24	

