

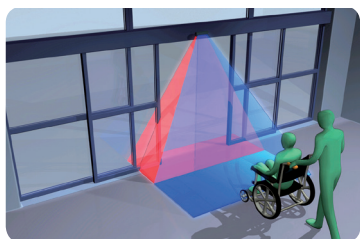


## HR100-CT

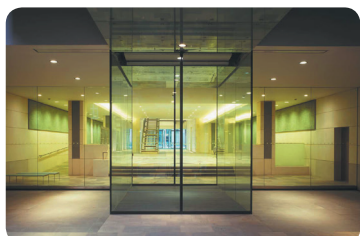
Activation + Monitored Safety



## Advanced Unidirectional Detection Sensor with Monitored Safety and Unique “Door Learn” Ability



Pioneering super sensor offers pedestrian door activation and unprecedented safety at mounting heights of up to 3m

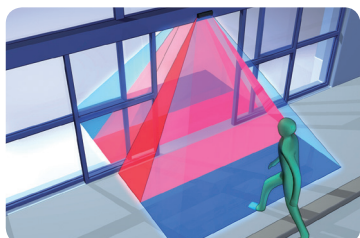


### ENERGY EFFICIENT

Intelligent unidirectional detection ability reduces door hold open time by 20% and building energy loss by 6% in a standard installation

### UNPARALLELED PEDESTRIAN SAFETY

Unique ability to memorise door motion allows the infrared safety curtain to be focused inside the moving door leaf resulting in unparalleled pedestrian safety



### VERSATILE

Flexibility to adjust the door activation and pedestrian safety detection zones independently makes the HR100-CT the ideal sensor for every sliding door installation

### EASE OF INSTALLATION

All the information necessary to install the HR100-CT sensor is printed on the sensor body



[www.hotron.com](http://www.hotron.com)

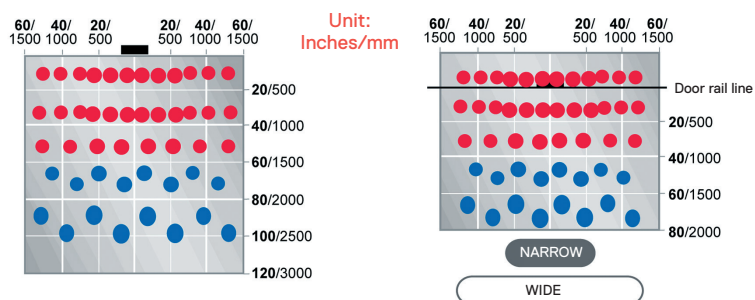
**HOTRON**

# HR100-CT

Activation + Monitored Safety



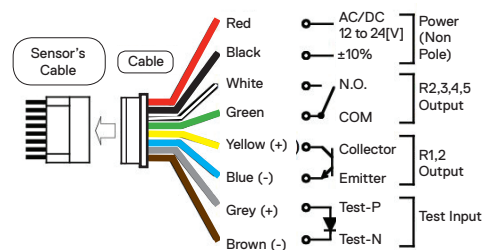
## Detection Area (inches / millimetres)



Sensor back plate on:  
Lever Arm: Inner 3 rows 8°  
Lever Arm: Outer 2 rows 10°

Sensor back plate off:  
Lever Arm: Inner 3 rows -8°  
Lever Arm: Outer 2 rows 6°

## Wiring Information

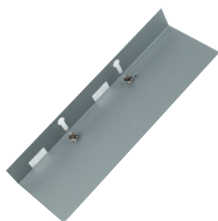


## Technical Specifications

Model	HR100-CT Dual Relay Output Pedestrian Door Activation + Monitored Safety
Detection Method	Active Infrared Detection
Installation Height	2000mm to 3000mm (6.5ft to 10ft)
Sensor Dimensions	230mm (W), 70mm (H), 44mm (D)
Pattern Adjustment	Width Adjustment: Inner 3 rows Wide or Narrow Width Adjustment: Outer 2 rows Wide or Narrow Depth Adjustment: Inner 3 rows 0° - 8° Depth Adjustment: Outer 2 rows 0° - 10° Depth Adjustment: 1 to 5 rows of detection (Dip Switch)
Presence Timer	2sec, 30sec, 1min and infinity (Inner 3 rows) 1sec (Outer 2 rows)
IP Rating	54
Power Supply	12 to 24V AC or DC ± 10%
Power Consumption	AC12V-2.1 [VA] (Max), DC12V-110 [mA] (Max) AC24V-2.1 [VA] (Max), DC24V-60 [mA] (Max)
Output	Open Collector 7.5 [mA] (Min) Resistor Load
Relay Hold Time	Approx. 0.5 sec
LED Indication	Green Standby Blue ROW 4,5 Detecting Red ROW 1,2,3 Detecting
Operating Temperature	-20°C to +60°C, (-4°F to 140°F)
Weight	250g (0.55 lbs)
Available Colours	Black: Product Code = HR100-CT/BL Silver: Product Code = HR100-CT/S
Accessories Provided	2.5m Connection Cable, Mounting Template, Mounting Screws, Installation Instructions

## Associated Accessories

Ceiling Attached Bracket  
UTB-HR100



Ceiling Recessed Bracket  
ITB-HR100



Sensor Cover  
HT100-COV/BL  
(black)  
HR100-COV/S  
(silver)



Black Weather Cover  
WC/BL



Ceiling Recessed Bracket  
HA-120



Spot-finder Installation Tool  
BF-1

