

GE Healthcare

МалМед

ул. Героїв Космосу, 13, м. Київ, 03148
тел: +38099-103-7777, +38063-657-9734
malmed.kiev@ukr.net
www.malmed.kiev.ua



MalMed



Voluson™ E10

EXTRAORDINARY VISION



HD*live* Technologies – ILLUMINATING THE FINE DETAILS



HD*live* – A Suite of Technologies

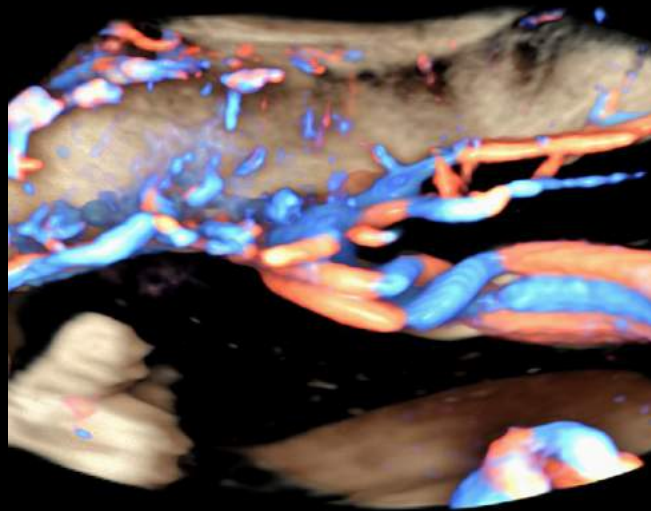
HD*live*

Exceptional Anatomic realism with skin rendering and lighting techniques



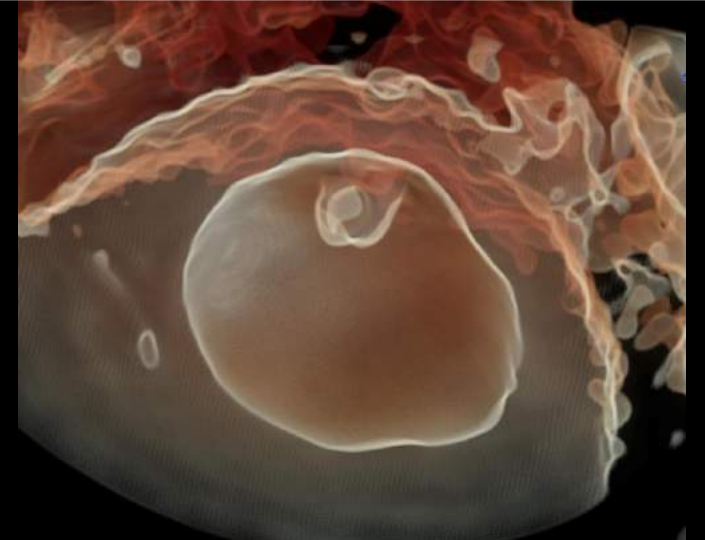
HD*live* Flow

Vascular structures are displayed with greater depth perception and dimension



HD*live* Silhouette

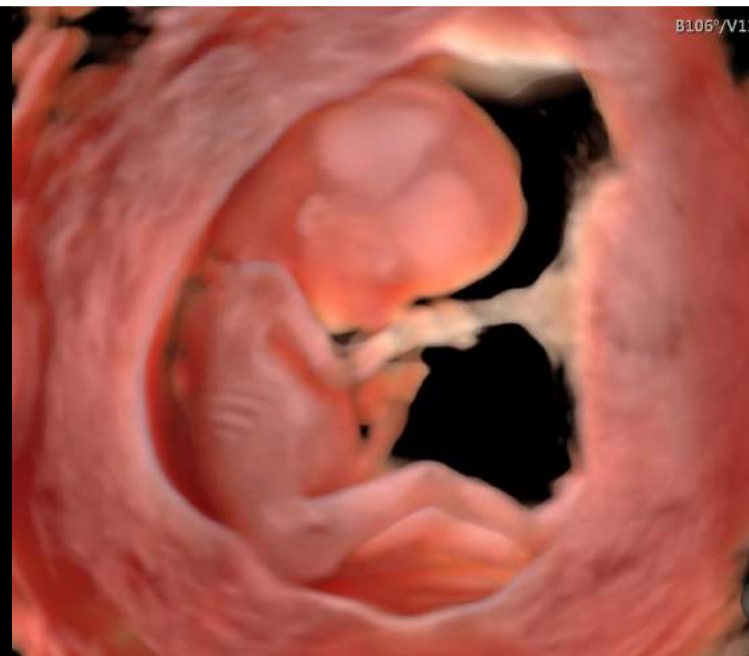
Volume imaging is taken to the next level with the ability to control what tissue type is displayed internally vs. externally



HD*live* – A Suite of Technologies

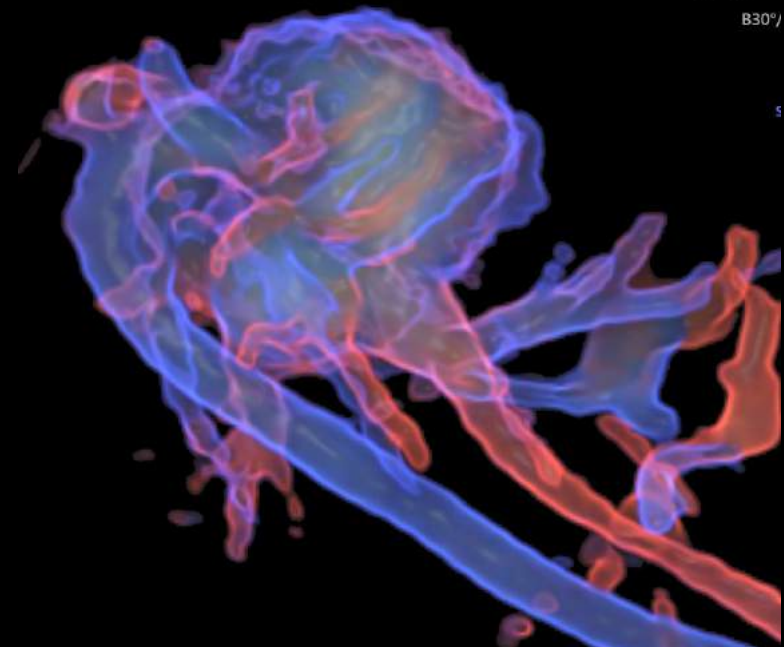
HD*live* Studio

Illuminate anatomy and surrounding
With up to 3 independent light
sources with various intensity and
hues



HD*live* Flow Silhouette

Visualize vascular structures along
with surrounding tissues with various
levels of border enhancement and
through transmission



HDlive Studio

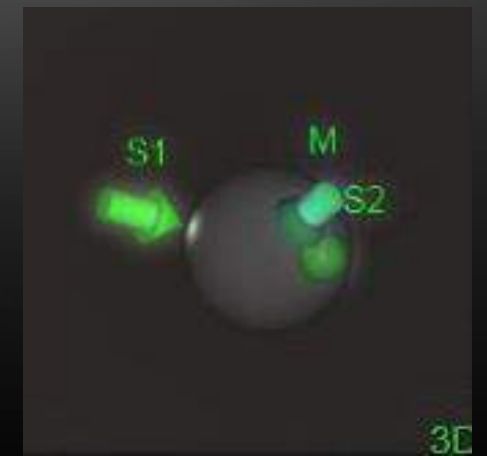
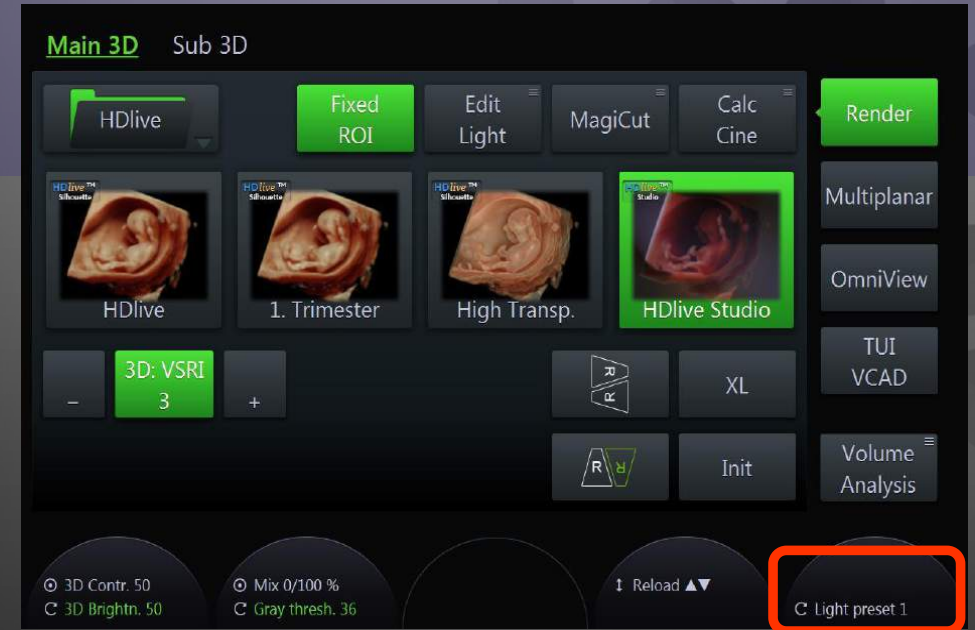
Your Vision – New Perspectives

- Up to 3 light sources
- Flexible lighting characteristics
 - Light sources, brightness and color
- Amniotic Fluid Illumination



HDlive Studio

Activate Light Source - Basic Controls



HDlive Studio

Light Source

Exam: OB
Clipboard: 52/6.20 GB



TIs 0.1
TIb 0.1
MI 1.1

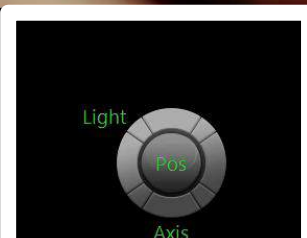
eM6C
62 Hz/1.7
B55°/V55°/ 9.8cm
HDlive Studio/OB
Qual mid2
Mix10/90
CRI 5/VSRI 4
3D Static

Measurement Results

Meas.	Value	Dev.	Age
-------	-------	------	-----



No Exam History available



HD*live* Studio

Feedback demonstrated need to simplify workflow for basic use

Solution: Basic Functionality when light activated on trackball

Preview of Light presets

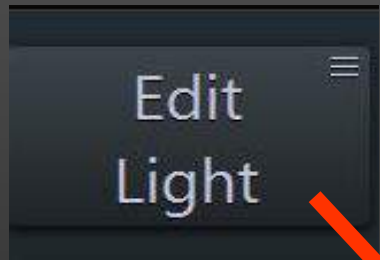
Limited functionality outside of edit light

Coming with
EXT 1 SW



HDlive Studio

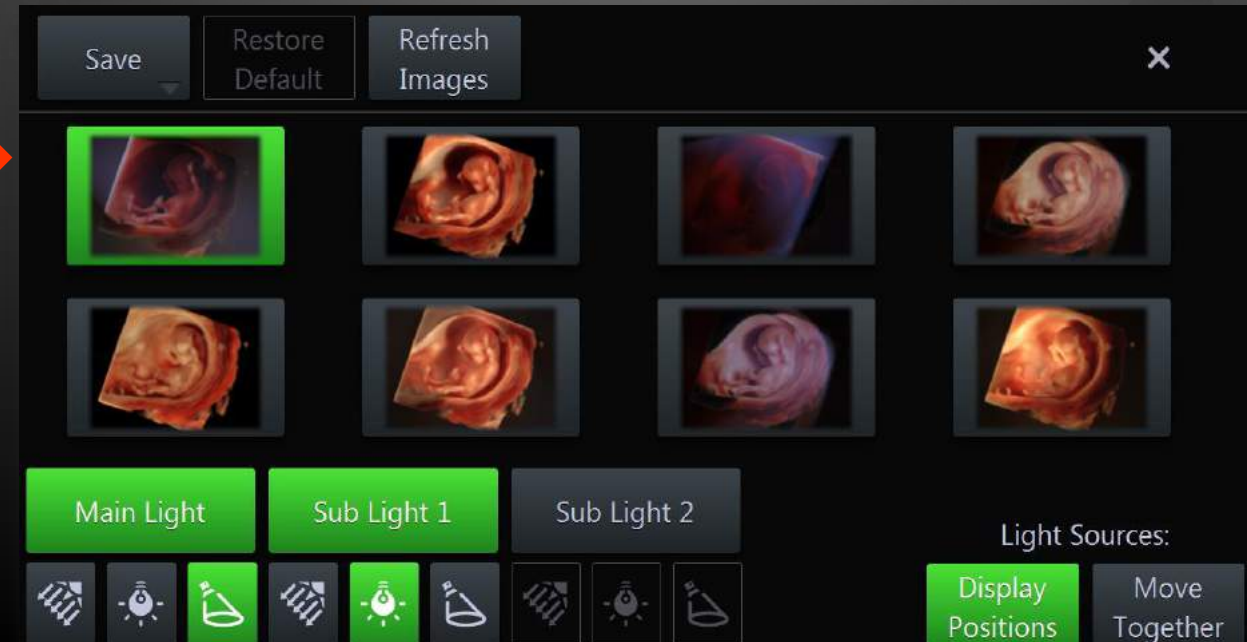
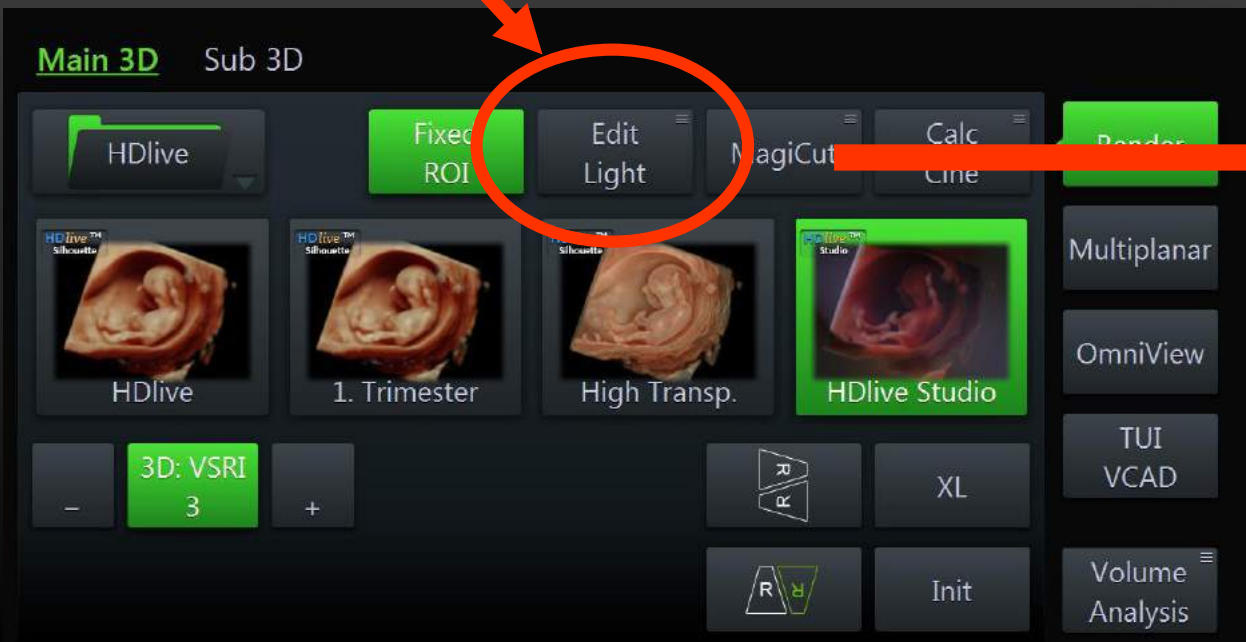
Edit Light Menu – Advanced Editing



Light source controls: (type, number, color, brightness)

Silhouette, Transparency

Fluid Effect



HD*live* Studio



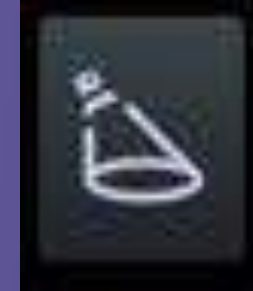
Directional

Light rays are parallel. Distance is infinite. Only one parameter – **position**



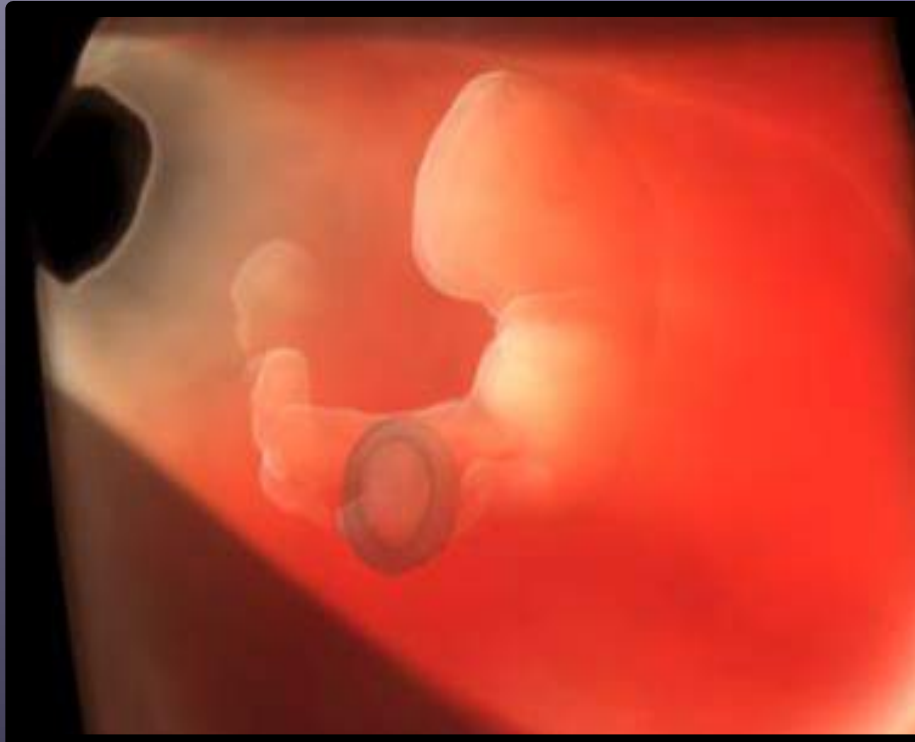
Point

Spreads radially in all directions. Two parameters – **position** and **distance**



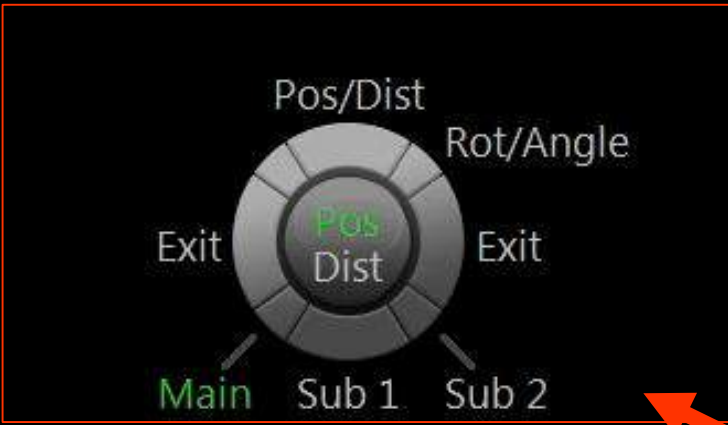
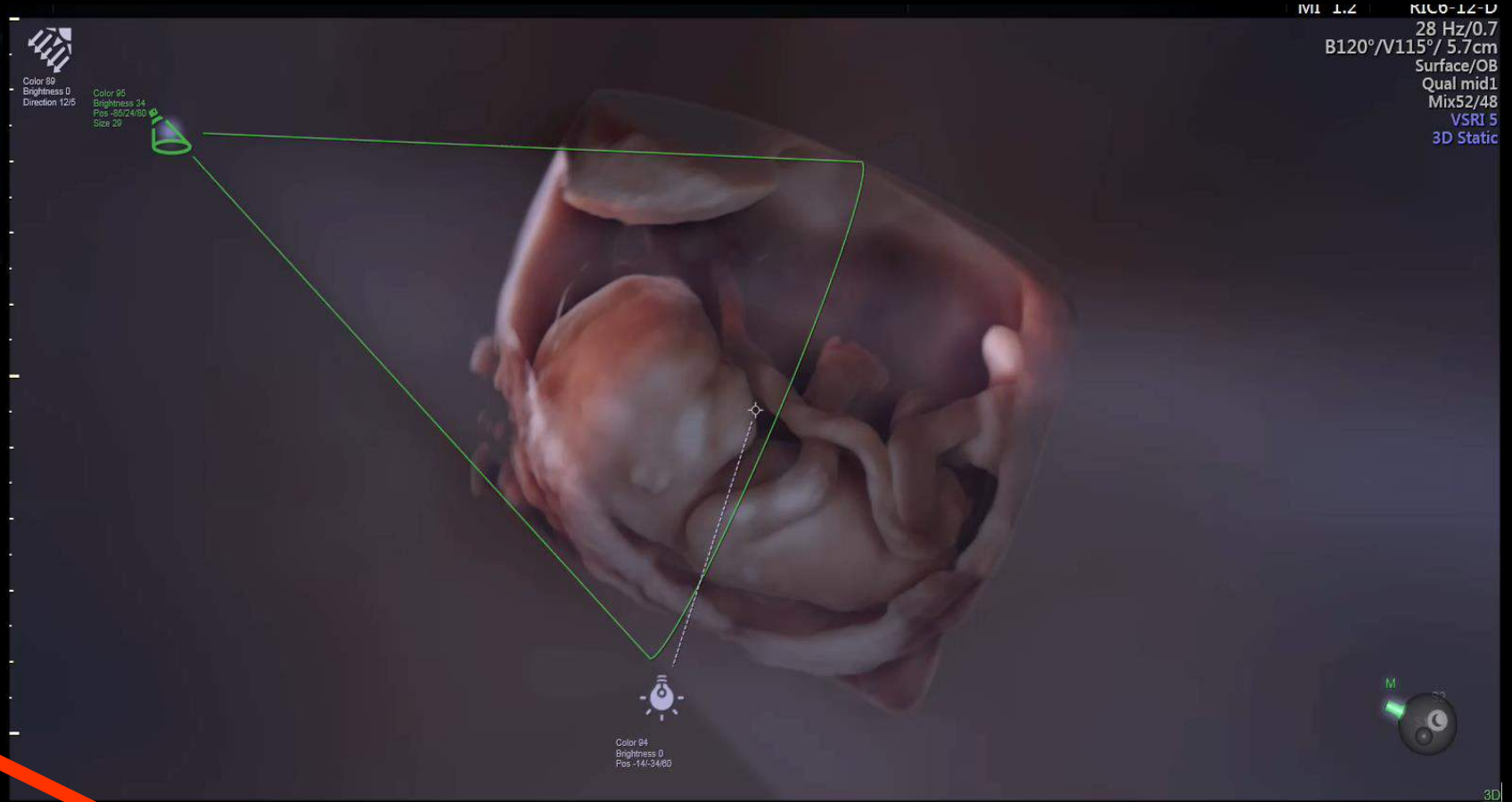
Spot

Cone shaped light. Parameters of **position**, **distance**, **angle** and **rotation**



HDlive Studio

Edit Light Menu-Manipulating the 3 light sources



No Exam History available



HDlive Studio

Edit Light Menu-Light Brightness



Brightn. 40

No Exam History available

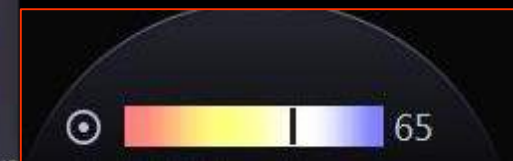


HDlive Studio

Edit Light Menu – Light Color



Mix52/48
VSRI 5
3D Static



No Exam History available



HD*live* Studio

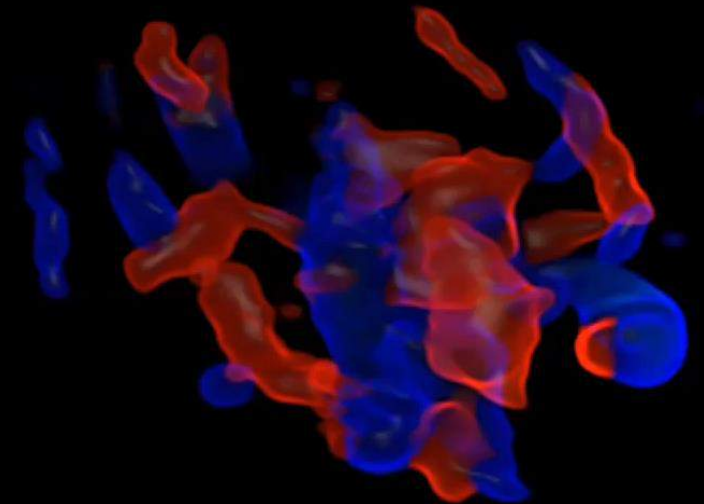
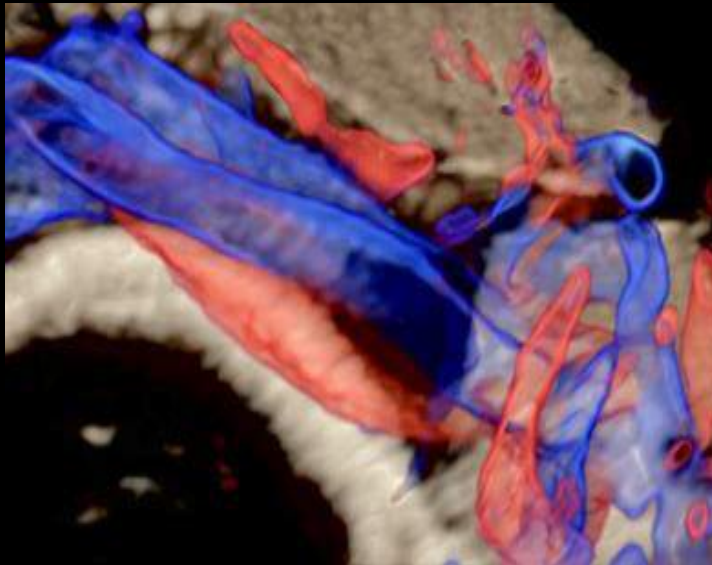
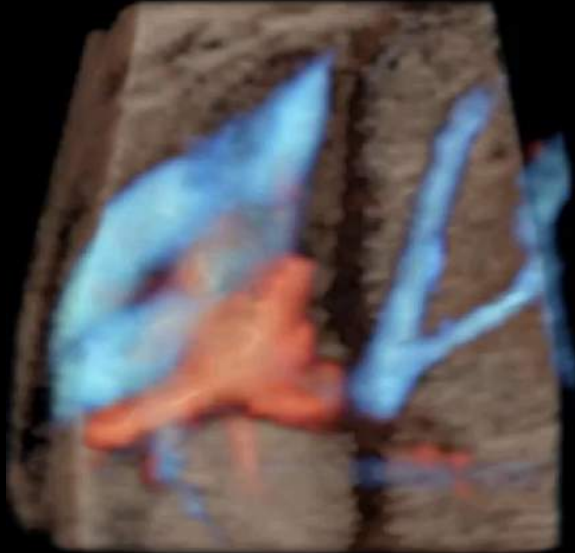
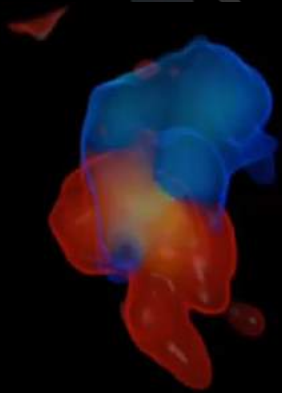
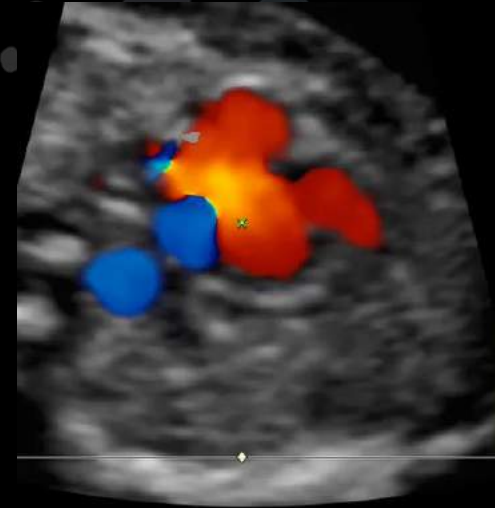
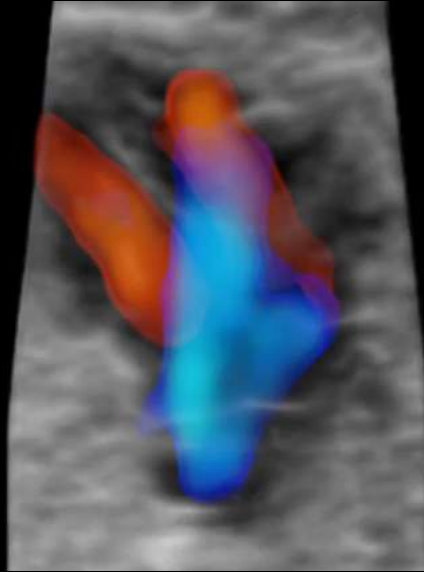
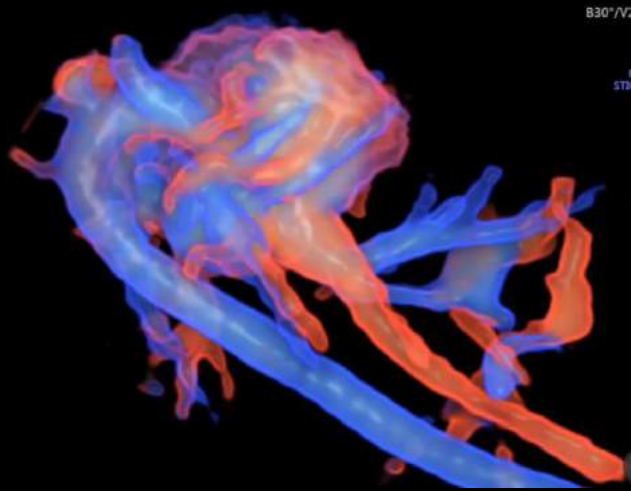
Edit Light Menu – A Tip about Zoom

MI 1.1 eM6C
62 Hz/1.7
B55°/V55°/ 9.8cm
HD*live* Studio/OB
Qual mid2
Mix0/100
CRI 5/VSRI 4
3D Static



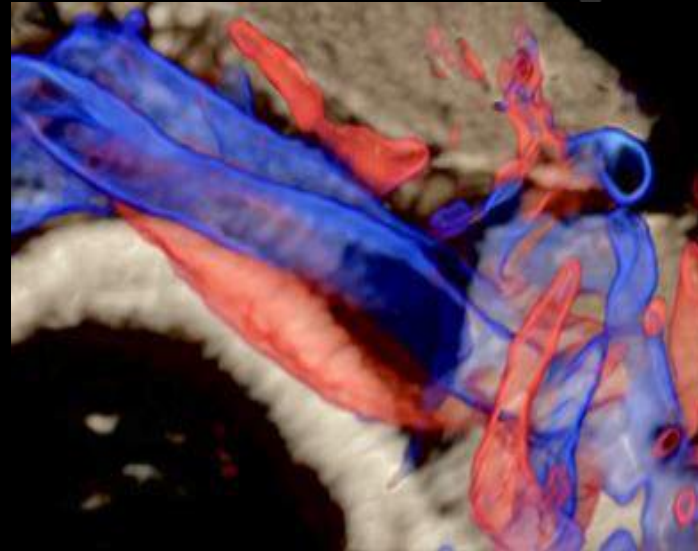
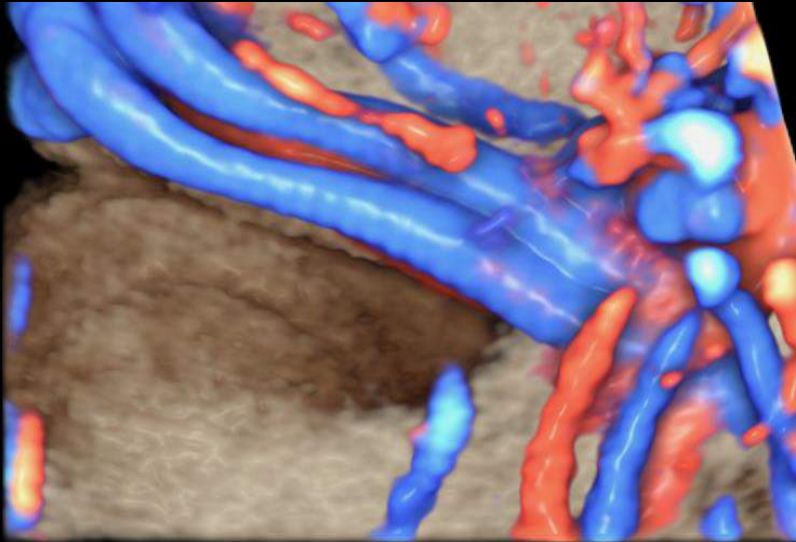
HD*live* Flow Silhouette

Your Vision- New Perspectives



HD*live* Flow Silhouette

Your Vision- A new Perspective

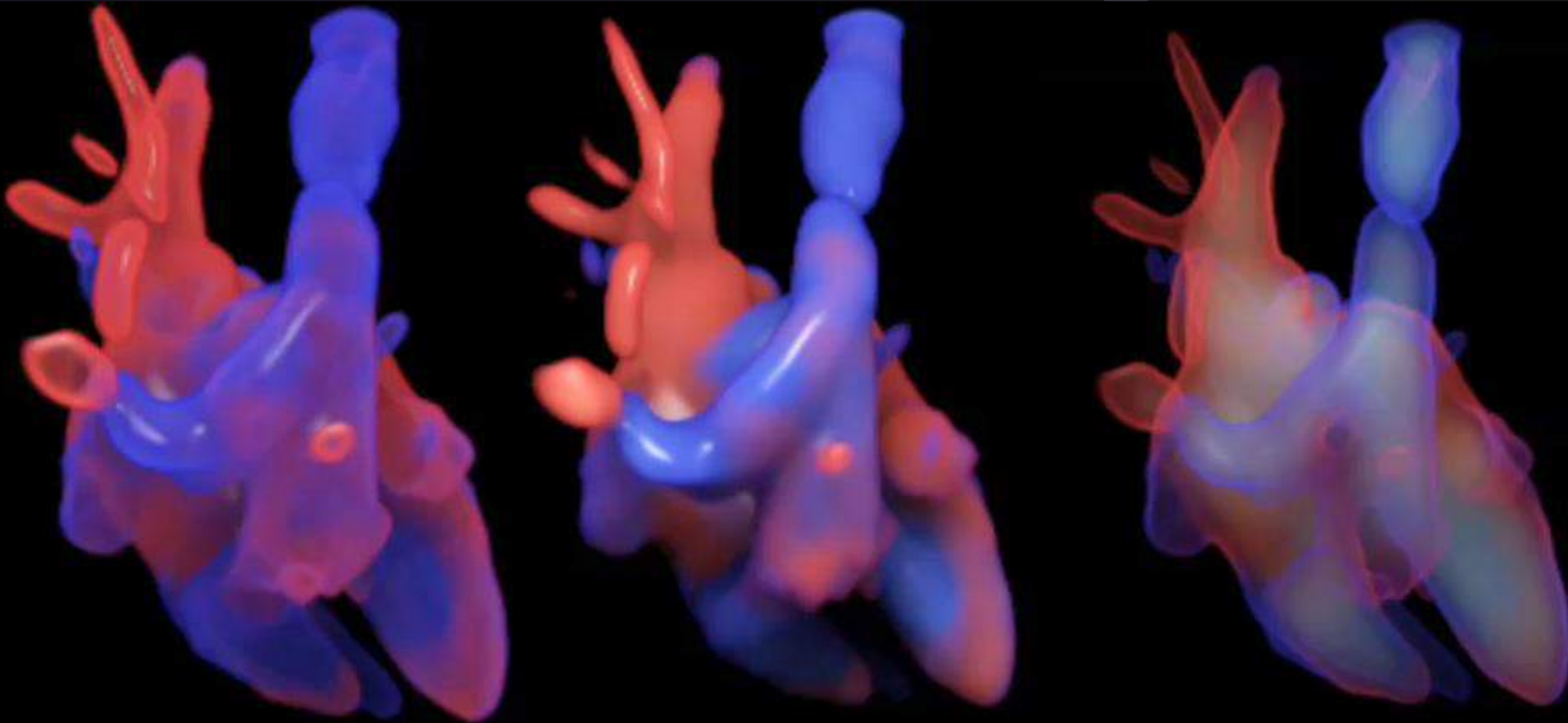


Solid structures give a excellent 3D impression
Transparency allows you to see what is behind



HD*live* Flow Silhouette

Transparency vs. Silhouette







www.malmed.kiev.ua
malmed.kiev@ukr.net
: +38099-103-7777
+38063-657-9734

