



OM20G



OM50G

	OM20G	OM50G
Max.IP extensions	20	50
Max.analog extensions	4	12
Max.IP trunks	24	62
Max.analog trunks	4	6
Max. concurrent calls	24	30
H×W×D	35×203×136 mm	41×286×161 mm
Model	2S/2, 4S, 4FXO	12S, 10S/2, 8S/4, 6S/6

Features

- Built-in analog-gateway modules and storage for recording, FoIP, and voicemail
- Headquarters and branch-office communications through SIP-based tie trunks
- Mobile extensions keep you connected anywhere and anytime
- The Windows-based SoftConsole provides click-to-dial, call history, and call recording
- Plug-and-play for New Rock IP phones
- XML/HTTP-based RESTful API for third-party applications
- Remote access via the New Rock Cloud
- Management with New Rock or third-party Element Management Systems (TR-069, SNMP)
- Add-on middle-ware for hospitality applications
- Peer-to-peer communication between OM IP-PBX and SIP terminals across NAT without the need for static IP addresses, DDNS or port mapping on the access router

The OM20G/50G (hereinafter “OM”) are All-in-One telephony systems. They provide seamless connectivity to not only PSTN and analog terminals, but also IP-based SIP trunks and SIP terminals. Using VoIP, the OM supports inter-office calls over the Internet or VPN. As enhanced model, OM also has some unique features such as Smart FoIP.

Always Connected with Your Customers

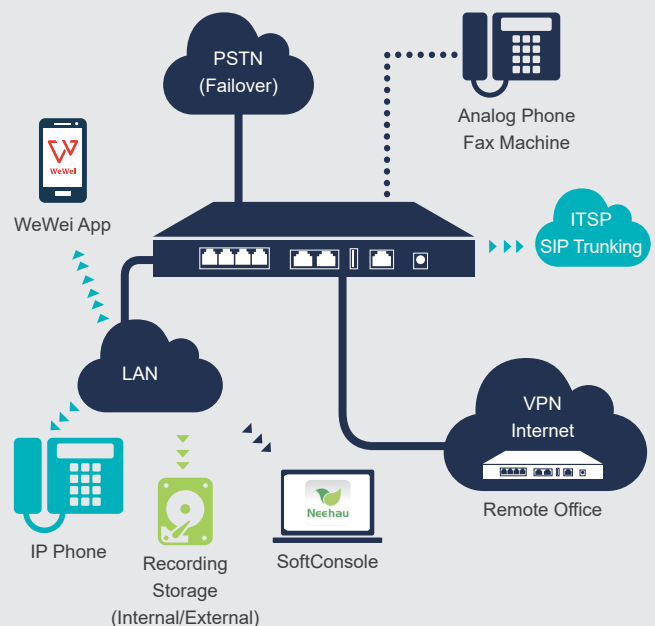
With features such as remote extension, call forking to your mobile phone and call-back, OM assures you that no matter where you are, whether in your office, traveling abroad, or working at home, you will never miss any important business call.

Improving Call Answer Rate

The smart auto attendant can provide 24/7 live answering service to customers, and direct the incoming calls efficiently to the extension or cell phone of the right person through configurable voice menus in business/non-business hours and holidays. Even, it can deliver the calls from VIP customers to the agents directly, bypassing voice menus.

Reduction of Telecommunications Cost

OM has all the IP remote-calling functions needed to support the remote worker, business travel, and communication with branches through the Internet. With IP connectivity, international or long-distance calls are turned into local toll-free calls. With advanced routing capabilities, OM can route calls intelligently according to call types. Combined with New Rock’s WeWei[®] softphone app and NeeHau[™] SoftConsole, you can achieve more effective and comfortable communications between you and your customers.



OM20G/50G IP-Telephony Systems

Specification

Protocols

Call control SIP/UDP and SIP/TCP (RFC3261), IMS (3GPP), MGCP (RFC3435)

Network Telnet, SSH, HTTP, HTTPS, DHCP/PPPoE client, DNS(A/SRV record), STUN, OpenVPN client, 802.1X

Media Processing

Caller ID Bellcore Type 1&2, ETSI, BT, NTT, and DTMF-based CID

Codec G.711 (a/μ), G.729a, G.722.2, G.722

DTMF In-band audio, RFC2833, SIP-INFO

Hook-flash Local processing, RFC2833, SIP-INFO

Fax over IP T.38, G.711 pass-through
T.38 compliant Group 3 Fax Relay
Maximum fax rate of 33,600 bps (T.38)

Disconnect modes Polarity reversal, Busy tone detection, Loop current

Voice-quality enhancement Echo cancellation (G.168-2004), Jitter buffer, Silence suppression (VAD, CNG), PLC

Voice

Smart auto attendant/ Receptionist Business/non-business hours/holiday, Music on hold, Attendant group, Multilingual/multi-level IVR, Auto attendant profiles, VIP service

Dialing Speed dial, Outgoing route selection, Least cost routing, Automatic route selection

Call settings Call transfer, Call forward, Do not disturb, Barge, Silent monitoring, Simplified DISA etc.

DISA Authorization with calling party number, Authorization triggered by feature access code

Call recording Call recording (total, on demand), Recording priority/retention priority upon insufficient storage

Voicemail MWI (polarity reversed, FSK, high voltage)

Analog trunk Caller ID, Polarity reversal detection

SIP trunk IMS, Multiple SIP servers, Skype Connect

Phone status indication Status subscription (BLF)

Security

User-defined ports SIP port, RTP port, HTTP/HTTPS port to access the Web GUI

Access list IP addresses allowed to access HTTP/HTTPS/Telnet/SSH service, IP address filtering of SIP

IP phone protection Prohibition on outgoing dialing by IP extensions on public network, User-Agent authentication, Registration password cracking protection

Web GUI login protection Prohibition on login from public IP address, Login password cracking protection

Encryption Encrypted password/PIN

Security level Three levels of security settings

Provisioning, Administration and Maintenance

Device management New Rock Unified Management System, TR-069 management (TR-069, TR-104, and TR-106), SNMP

Remote access over TCP New Rock Cloud

Application interface API (XML/HTTP)

Phone management Plug-and-play for IP phones, Configuration-free installation of softphone

Auto provisioning Download configuration file via TFTP/FTP/HTTP/HTTPS, Obtaining ACS address via DHCP option 66 or redirection

Log 8-level log management, Syslog, Internal USB flash drive (16 GB)

Data capture Port capture, Packet capture

Configuration Bulk import/export. Resetting to the factory default

Status and statistic Call status and history, Device status monitoring and statistics collection

Monitoring/alarming Status/performance monitoring or reporting. Status/performance alarms

Other

Multi-site voice Support NAT traversal, Uniform dial plan, Call forward, Call transfer. Outbound trunk sharing, Three-way calling, Attendant on remote site

QoS DiffServ, TOS, 802.1p/Q VLAN tagging

Internal storage Local recording, Voicemail, Customer information, User-uploaded IVR file

Hardware

	OM20G	OM50G
CPU	Dual core, 880 MHz	Dual core, 880 MHz
RAM	256 MB	256 MB
FLASH	16 MB	16 MB
Internal USB flash drive	16 GB	16 GB
Weight (net)	0.72 kg	1.2 kg
DC power input voltage	12 VDC/1.5 A	12 VDC/1.5 A
Power consumption	9 W	18 W
Mounting	Desktop,Rack	Desktop,Rack
Operating	Temperature: 0 to 40°C Humidity: 10 to 90% RH (non-condensing)	
Storage	Temperature: -40 to 70°C Humidity: 5 to 90% RH (non-condensing)	