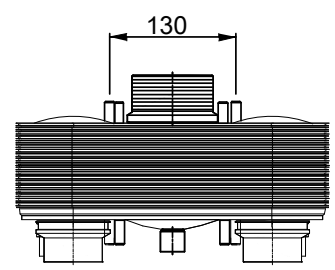
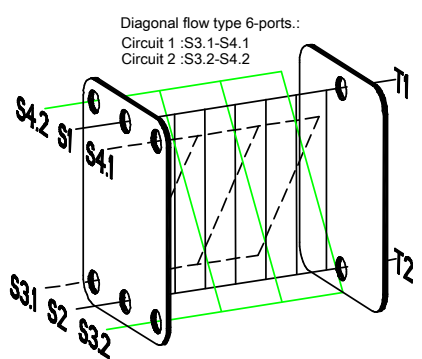
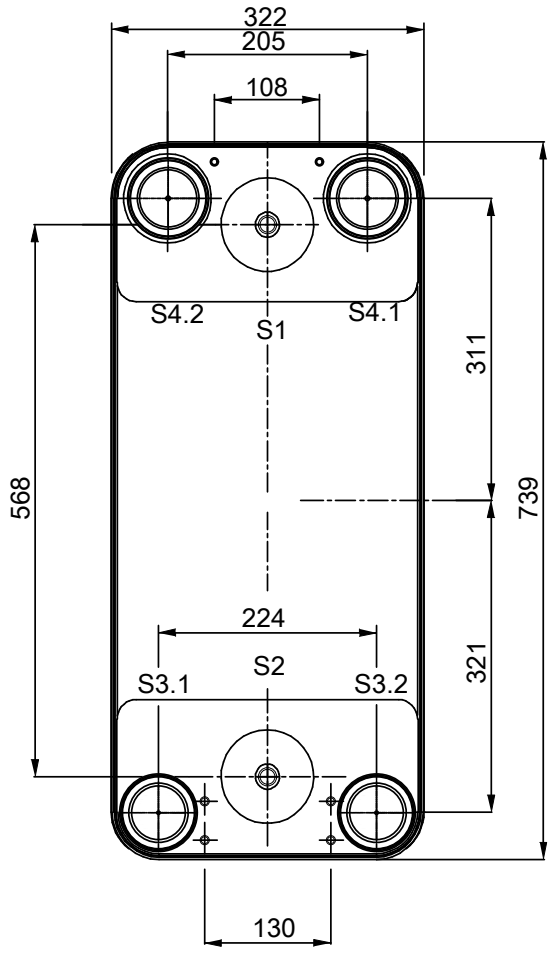
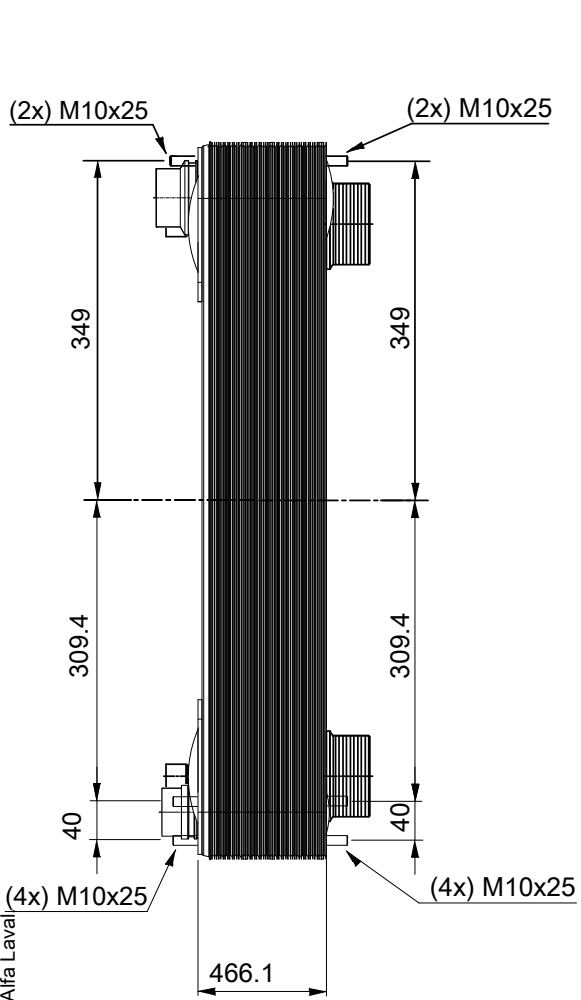
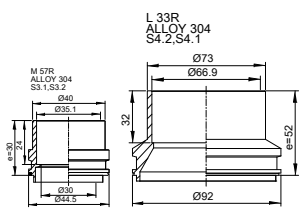
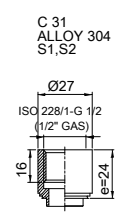
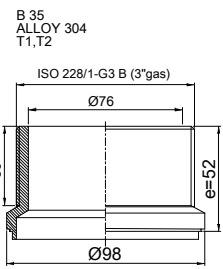


Note that all unique customer requirements (i.e tolerance) need to be verified thru Alfa Laval



T1 T2 T3.1 T3.2 T4.1 T4.2 locations on back side correspond to S1 S2 S3.1 S3.2 S4.1 S4.2 on front side



HEATING SURFACE m²
 WAGA NETTO 158.9 kg
 CIĘŻAR ROBOCZY kg
 MATERIAŁ PŁYT ALLOY 316
 UKŁAD PŁYT 1*86HR/1*87HB

WSZYSTKIE WYMIARY W MILIMETRACH

STRONAMEDIUM	WLOT	TEMP. °C	WYLOT	TEMP. °C	NATEŻENIE PRZEPŁYWIJSZPADEK CIŚNIENIA	OBJĘTOŚĆ CIECZYZ
1	T1	°C	T2	°C	kg/h	40.9 dm ³
2	S3.1, S3.2	°C	S4.2, S4.1	°C	kg/h	21.5/21.5 dm ³

PRESSURE VESSEL APPROVAL PED

ACH-500DQ-174H-F (3287125663)

www.alfalaval.com

KLIENT

DŁUGOŚĆ CAŁKOWITA 569 mm
 SZEROKOŚĆ CAŁKOWITA 322 mm
 WYSOKOŚĆ CAŁKOWITA 739 mm



12.07.2021
 REV 0