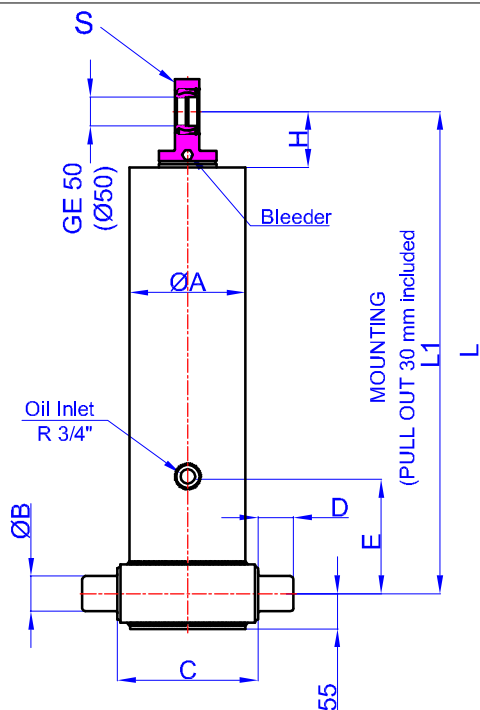
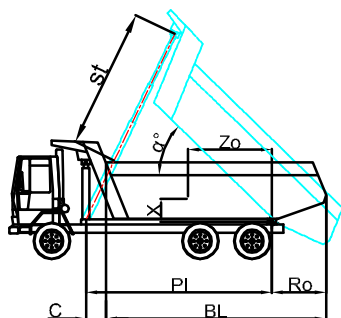


GHS 135 x 3 x 3450 C	Product Code : 43135334503
	Reference No : 01-001



A	: 156 mm
B	: 60 mm
C	: 193 mm
D	: 60 mm
E	: 350 mm
H	: 95 mm
L	: 1452 mm
*L1	: 1482 mm
S	: 42 mm

* Inc 30 mm pull out :
 tolerance +20 -0
 Hard Chromed all stages
 Working Pressure : 170 Bar
 Max. Working Pressure : 190 Bar
 All Cylinder Materials are St
 52 Cold Drawn Tubes



STAGE	1	2	3	4	5	6	7	8	TOTAL
EFFECTIVE DIAMETER (mm)	Ø135	Ø116	Ø98						
STROKE	1150	1150	1150						3450
OIL DISPLACEMENT (L)	17	13	9,5						47,5
THRUST AT 170 BAR (TONS)	24	18	12						

BL (body length)	200	4400	600	200	4300	600	200	4200	600
Ro (rear overhang)	45	400	47	46	400	51	47	400	52
alpha degree		47	49	46	48	51	47	50	52
Ycog (vert. pos. centre of gravity)	400	33	36	33	37	41	34	38	43
PI (Pivot length)	700	37	41	37	42	50	37	42	50
alpha degree = st x 60 / PI	1000	41	48	43	50	58	44	52	59
st	3300	3290	3266	3296	3280	3315	3290	3333	3293

Weight : 135 Kg

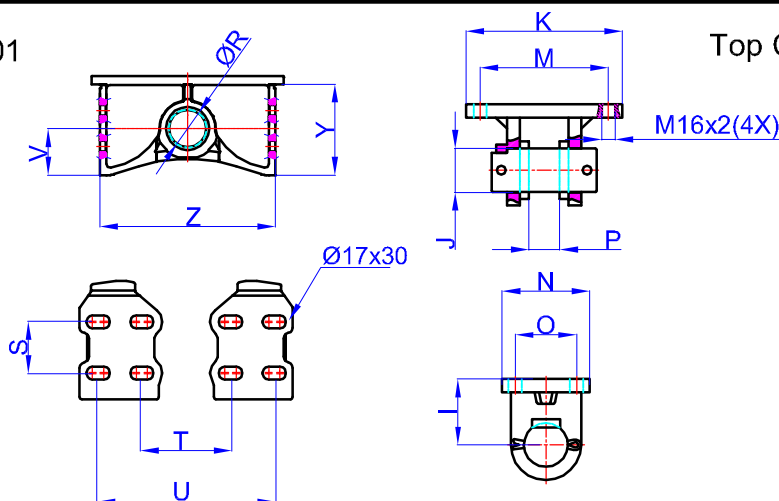
Drawing No : 43135334503-02-001

Bracket : 47000017-0001

R	: 60,8 mm
S	: 70 mm
T	: 170 mm
U	: 290 mm
V	: 76 mm
Y	: 148 mm
Z	: 286 mm

* Bracket are optional

Weight : 9,5 Kg



Top Clavis : 47000020-0001

I	: 75 mm
J	: 50 mm
K	: 178 mm
M	: 146 mm
N	: 100 mm
O	: 70 mm
P	: 39 mm

* Bracket are optional