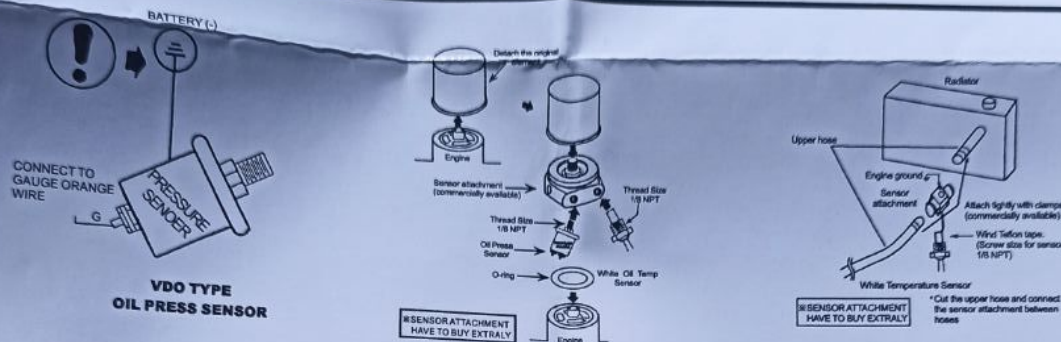


INSTALLATION INSTRUCTIONS

LED7787 5" 4 IN 1 PERFORMANCE TACHOMETER

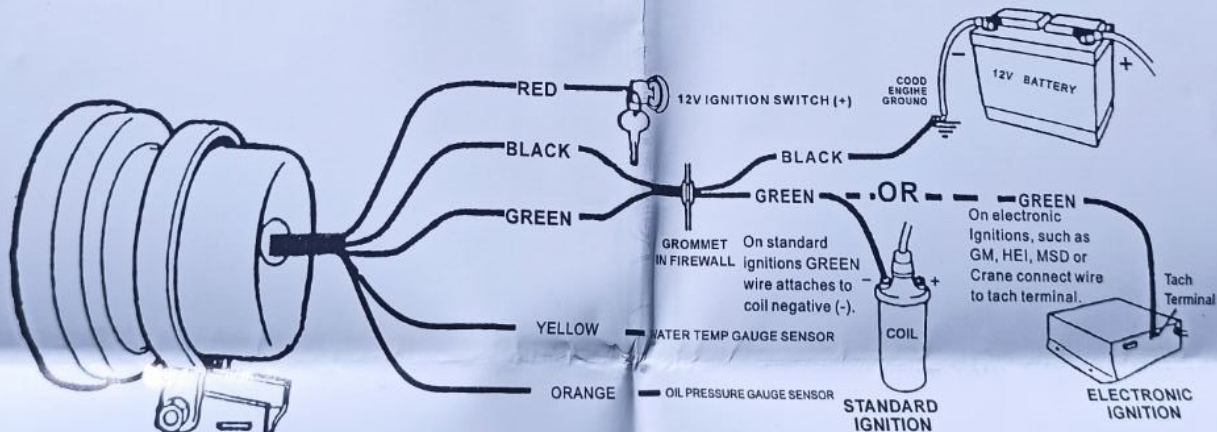


Mounting

The special design of the tachometer base allows for a variety of mounting possibilities. Attach the base using screws provided or use pop rivet tool.



Wiring

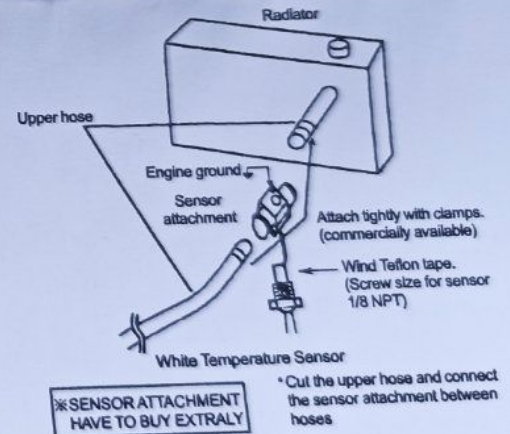
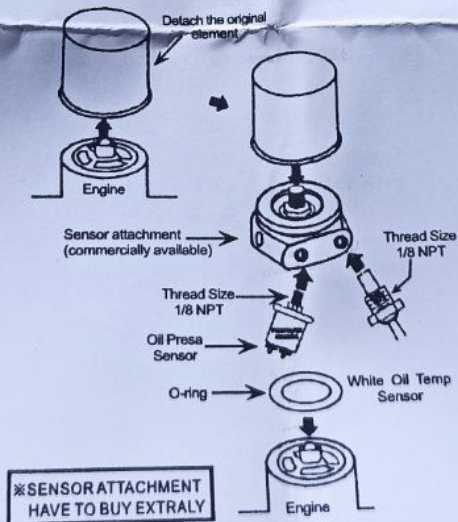
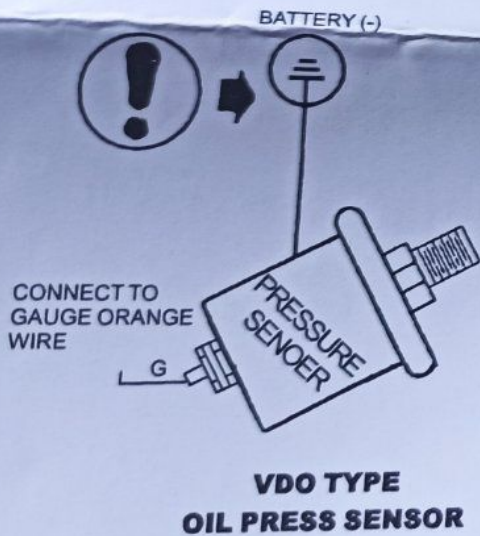


WARNING
ATTACH ONLY TO TACH TERMINAL
Warranty will be void if connected to coil on MSD ignitions.

NOTE:The water temp gauge sensor is the same as oil temp gauge sensor.

INSTALLATION INSTRUCTIONS

LED7787 5" 4 IN 1 PERFORMANCE TACHOMETER

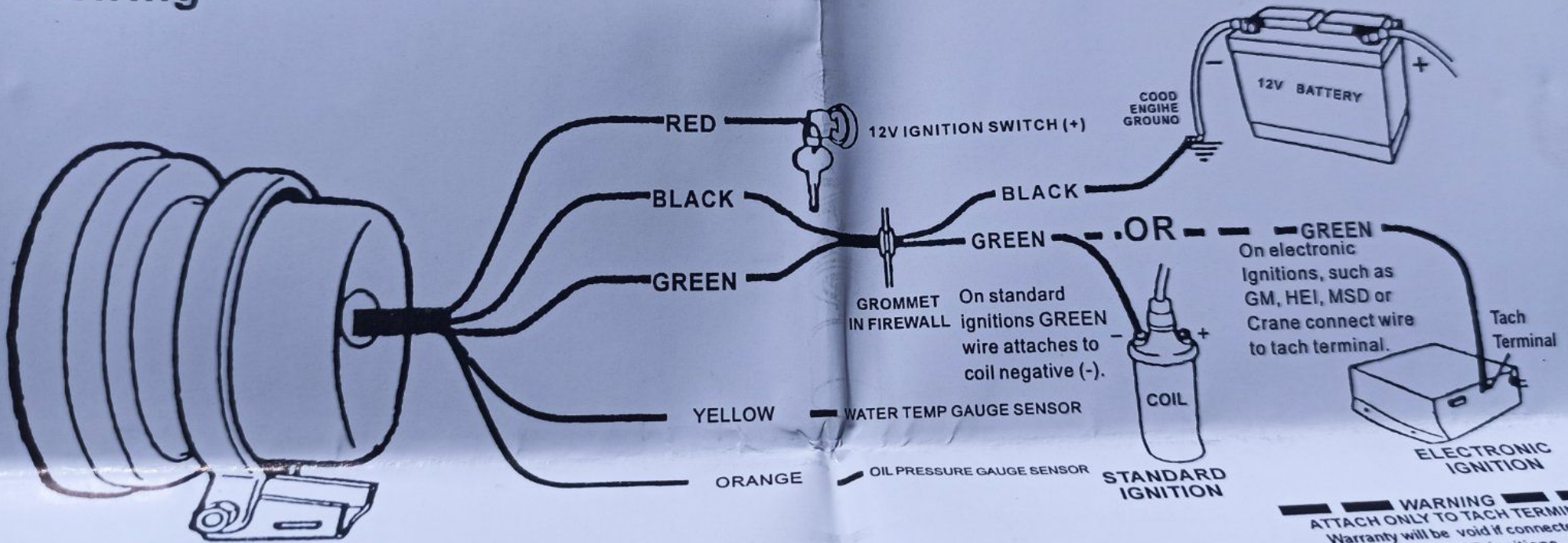


Mounting

The special design of the tachometer base allows for a variety of mounting possibilities. Attach the base using screws provided or use pop rivet tool.



Wiring



... same as oil temp gauge

1. opening the power , the meter pointer will scan automatically and the "TACH" is flashing

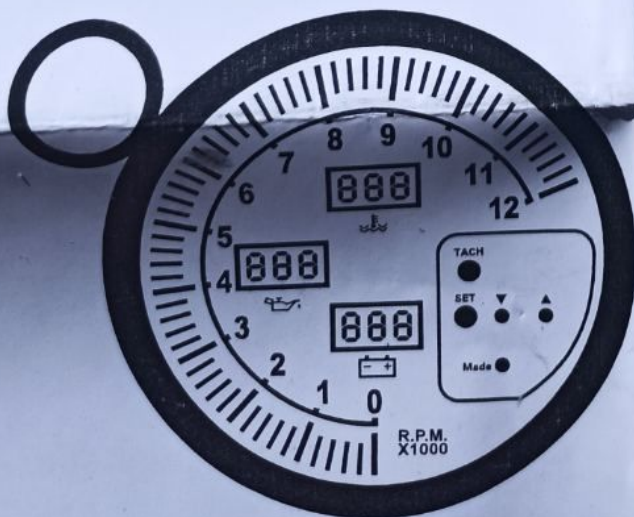
2. Press the button "▽" is the back light key

3. Meter with recall, when press the button "mode" , the pointer will be display the Max RPM. Record. The pointer will return to the current position after one seconds

4. Cylinder selection: the tachometer is used for any cars , sliding the cylinder switch to the appropriate position: 1-10 cylinder, when pressing the button "△" for 3 seconds, the set light will on frequently, the pointer will return to factory settings, then press one time , the pointer number will increase one bit , when you choose wrong or reset , press the button "△" please, the number will increase to 10 position , press the button once more, the pointer will return to 1 position , adjusting regulation , scale number is same as cylinder number.

5. Setting the R.P.M warning light

The pointer will return to 0 position or the "TACH" will on when pressing the button "△" and "▽" simultaneourly for 3 seconds . then press the button "△" and "▽" to adjusting the warning position. after you choose release the button , the pointer will return to current position automatically . (for example: set the pointer is number 5, the warning light or TACH will on when the R.P.M. of the engine is over 5000.



External Shift Light
(Removable)

