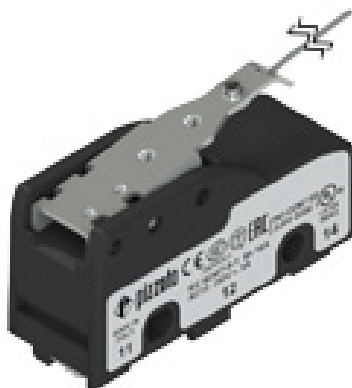


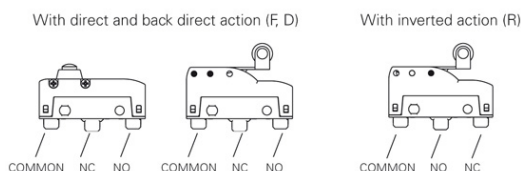
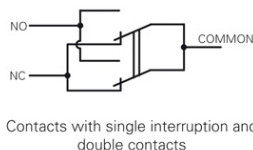
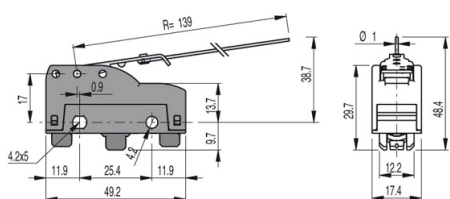
Article: **MK V11D37**  
 Description: Microswitch with wire lever

 Sheet: 25889-0-en-2.1.0  
 Date: 2021/05/27  
 Page: 1/3

**Housing:**  
 Polymer housing

**Protection degree:**  
 IP00 without terminal cover  
 IP20 with terminal cover VF C01, VF C03  
 IP40 with terminal cover VF MKC•1•, VF C02

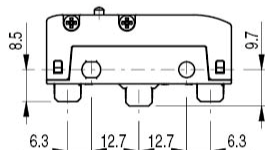
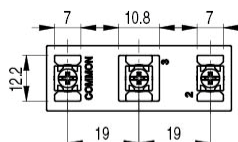
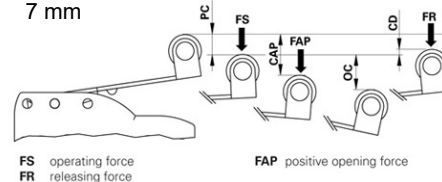
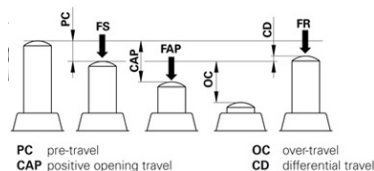
**General data:**  
 Ambient temperature: -25°C ... +85°C  
 Max. actuation frequency: 3600 operating cycles/hour  
 Mechanical endurance: 10 million operating cycles  
 Safety parameters B10D: 20,000,000 for NC contacts

**Contact block characteristics:**  
 1NO+1NC changeover  
 Contacts with single interruption and double contacts.

**Positive switch opening:**  
 Device without positive opening. If installed individually, not suitable for safety applications.

**Actuation forces and travels:**  
 PC: 19mm      FS: 0,08N  
 OC: 9,5mm      FR: 0,04N  
 CD: 2,3mm

**Cable cross section (flexible copper strands):**

 min. 1 x 0,34 mm<sup>2</sup> (1 x AWG 22)  
 max. 2 x 1,5 mm<sup>2</sup> (2 x AWG 16)

**Wire stripping length:**  
 7 mm


Screw terminals V with plate

**Compliance with the requirements of:**  
 Low Voltage Directive 2014/35/EU,  
 EMC Directive 2014/30/EU,  
 RoHS Directive 2011/65/EU.

**Conformità alle norme:**  
 IEC 60947-5-1, EN 60947-5-1, IEC 60529,  
 EN 60529, EN 60947-1, IEC 60947-1, EN 50581.

**Approvals:**  
 UL 508, CSA 22.2 No. 14, EN60947-1, EN 60947-5-1

**Device screw tightening torques:**  
 Tighten the M4 screws with a torque of 0.8 ... 1.2 Nm, insert washer.  
 Attention: A tightening torque higher than 1.2 Nm can cause the breaking of the microswitch.  
 Tighten the terminal screws with a torque of 0.6 ... 0.8 Nm.

**Markings and quality marks:**

**Electrical data:**

 Thermal current (I<sub>th</sub>): 16 A  
 Rated insulation voltage (U<sub>i</sub>): 250 Vac 300 Vdc  
 Rated impulse withstand voltage (U<sub>imp</sub>): 4 kV  
 Conditional short circuit current: 1000 A acc. to EN 60947-5-1  
 Protection against short circuits: type gG fuse 16 A 250 V  
 Pollution degree: 3  
 Dielectric strength 2000 Vac/min.

**Utilization category:**

 Alternate current: AC15 (50...60 Hz)  

U <sub>e</sub> (V)	120	250
I <sub>e</sub> (A)	3	5

 Direct current: DC13  

U <sub>e</sub> (V)	24	125	250
I <sub>e</sub> (A)	4	0,6	0,3

Article: **MK V11D37**  
 Description: Microswitch with wire lever

 Sheet: 25889-0-en-2.1.0  
 Date: 2021/05/27  
 Page: 2/3

**Characteristics approved by IMQ and CCC**

 Rated insulation voltage (Ui): 250 Vac  
 Conventional free air thermal current (Ith): 16 A  
 Protection against short circuits: type gG fuse 16 A 250 V  
 Rated impulse withstand voltage (Uimp): 4 kV  
 Conditional short circuit current: 1000 A  
 Protection degree of the housing: IP00  
 Terminals: screw terminals/faston  
 Pollution degree: 3  
 Utilization category: AC15  
 Operating voltage (Ue): 250 Vac (50 Hz)  
 Operating current (Ie): 5 A  
 Forms of the contact element: X; Y; C  
 Positive opening of contacts on contact blocks: 1, 3

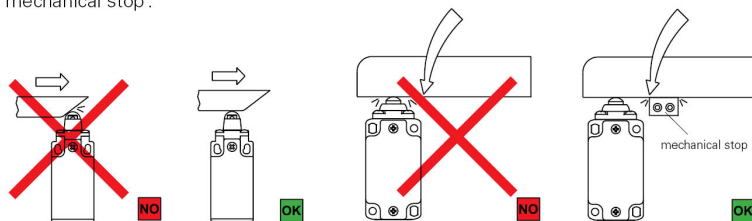
 In conformity with standards: EN 60947-1, EN 60947-5-1+ A1:2009,  
 fundamental requirements of the Low Voltage Directive 2006/95/EC.

**Characteristics approved by UL**

 Electrical Ratings:  
 Q300 pilot duty (69 VA, 125-250 V dc)  
 A300 pilot duty (720 VA, 120-300 V ac)

**Mechanical stop**

Acc. to EN ISO 14119 paragraph 5.2 "the position sensors must not be used as mechanical stop".

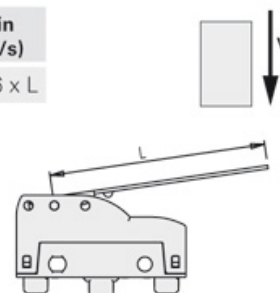


The actuator must not exceed the max. travel as indicated in the travel diagrams.

The guard must not use the switch head as a mechanical stop.

**Lever with direct action (D) - Type 3**

Vmax (m/s)	Vmin (mm/s)
0,03 x L	0,0166 x L





**Pizzato Elettrica S.r.l.**

Via Torino, 1  
36063 Marostica (VI)  
ITALY

Tel. +39.0424.470.930

E-mail [info@pizzato.com](mailto:info@pizzato.com)

Web [www.pizzato.com](http://www.pizzato.com)

Article: **MK V11D37**  
Description: Microswitch with wire lever

Sheet: 25889-0-en-2.1.0  
Date: 2021/05/27  
Page: 3/3

This device **does not** feature positive opening and therefore **cannot be used individually for safety functions.**