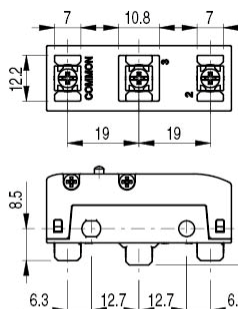
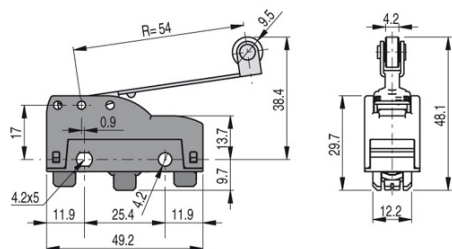


Article: **MK V11D53**
 Description: Microswitch with roller lever

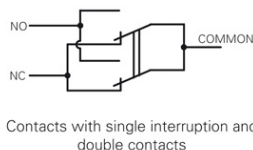
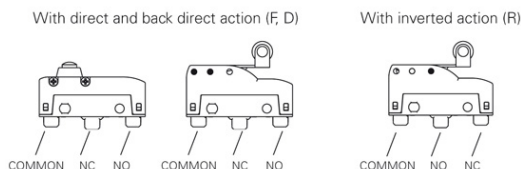
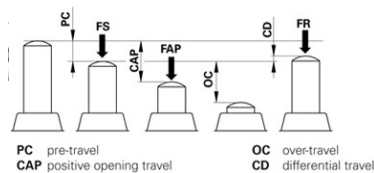
 Sheet: 25889-0-en-2.1.0
 Date: 2021/05/27
 Page: 1/3


Screw terminals V with plate

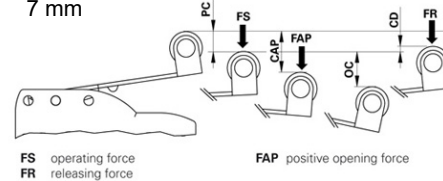
Housing:
 Polymer housing

Protection degree:
 IP00 without terminal cover
 IP20 with terminal cover VF C01, VF C03
 IP40 with terminal cover VF MKC•1•, VF C02

General data:
 Ambient temperature: -25°C ... +85°C
 Max. actuation frequency: 3600 operating cycles/hour
 Mechanical endurance: 10 million operating cycles
 Safety parameters B10D: 20,000,000 for NC contacts

Contact block characteristics:
 1NO+1NC changeover
 Contacts with single interruption and double contacts.

Positive switch opening:
 Device without positive opening. If installed individually, not suitable for safety applications.

Actuation forces and travels:
 PC: 7,7mm FS: 0,76N
 OC: 8,9mm FR: 0,58N
 CD: 0,9mm

Cable cross section (flexible copper strands):

 min. 1 x 0,34 mm² (1 x AWG 22)
 max. 2 x 1,5 mm² (2 x AWG 16)

Wire stripping length:
 7 mm

Compliance with the requirements of:

 Low Voltage Directive 2014/35/EU,
 EMC Directive 2014/30/EU,
 RoHS Directive 2011/65/EU.

Conformità alle norme:

 IEC 60947-5-1, EN 60947-5-1, IEC 60529,
 EN 60529, EN 60947-1, IEC 60947-1, EN 50581.

Approvals:

UL 508, CSA 22.2 No. 14, EN60947-1, EN 60947-5-1

Device screw tightening torques:

Tighten the M4 screws with a torque of 0.8 ... 1.2 Nm, insert washer.

Attention: A tightening torque higher than 1.2 Nm can cause the breaking of the microswitch.

Tighten the terminal screws with a torque of 0.6 ... 0.8 Nm.

Markings and quality marks:

Electrical data:

 Thermal current (I_{th}): 16 A
 Rated insulation voltage (U_i): 250 Vac 300 Vdc
 Rated impulse withstand voltage (U_{imp}): 4 kV
 Conditional short circuit current: 1000 A acc. to EN 60947-5-1
 Protection against short circuits: type gG fuse 16 A 250 V
 Pollution degree: 3
 Dielectric strength 2000 Vac/min.

Utilization category:

 Alternate current: AC15 (50...60 Hz)

U _e (V)	120	250
I _e (A)	3	5

 Direct current: DC13

U _e (V)	24	125	250
I _e (A)	4	0,6	0,3

Article: **MK V11D53**
 Description: Microswitch with roller lever

 Sheet: 25889-0-en-2.1.0
 Date: 2021/05/27
 Page: 2/3

Characteristics approved by IMQ and CCC

 Rated insulation voltage (U_i): 250 Vac
 Conventional free air thermal current (I_{th}): 16 A
 Protection against short circuits: type gG fuse 16 A 250 V
 Rated impulse withstand voltage (U_{imp}): 4 kV
 Conditional short circuit current: 1000 A
 Protection degree of the housing: IP00
 Terminals: screw terminals/faston
 Pollution degree: 3
 Utilization category: AC15
 Operating voltage (U_e): 250 Vac (50 Hz)
 Operating current (I_e): 5 A
 Forms of the contact element: X; Y; C
 Positive opening of contacts on contact blocks: 1, 3

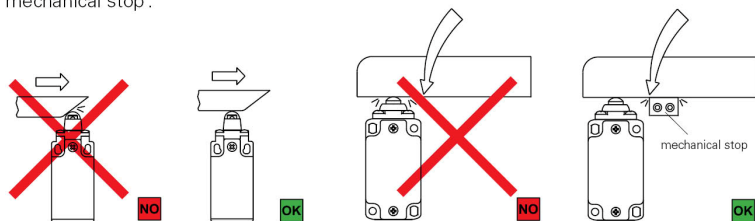
Characteristics approved by UL

 Electrical Ratings:
 Q300 pilot duty (69 VA, 125-250 V dc)
 A300 pilot duty (720 VA, 120-300 V ac)

 In conformity with standards: EN 60947-1, EN 60947-5-1+ A1:2009,
 fundamental requirements of the Low Voltage Directive 2006/95/EC.

Mechanical stop

Acc. to EN ISO 14119 paragraph 5.2 "the position sensors must not be used as mechanical stop".

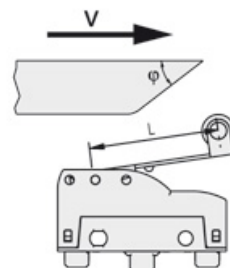


The actuator must not exceed the max. travel as indicated in the travel diagrams.

The guard must not use the switch head as a mechanical stop.

Roller lever with direct action (D) - Type 6

φ	Vmax (m/s)	Vmin (mm/s)
15°	0,1 x L	0,0664 x L
30°	0,05 x L	0,0332 x L
45°	0,03 x L	0,0166 x L



Article: **MK V11D53**
Description: Microswitch with roller lever

Sheet: 25889-0-en-2.1.0
Date: 2021/05/27
Page: 3/3

This device **does not** feature positive opening and therefore **cannot be used individually for safety functions.**