



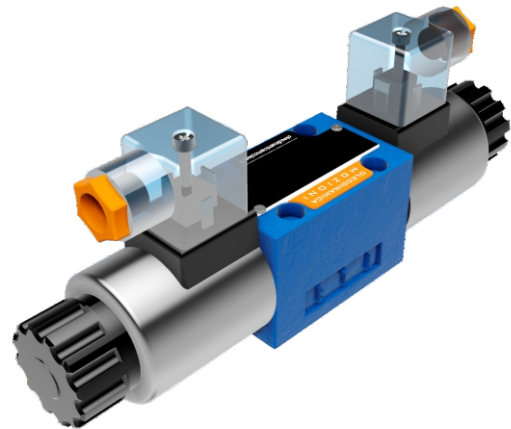
**DISTRIBUTORI  
OLEODINAMICI**

**WE6**

**SOLENOID OPERATED  
DIRECTIONAL CONTROL VALVES**

WE6 SERIES DIRECTIONAL CONTROL VALVES ARE SOLENOID OPERATED DIRECTIONAL SPOOL VALVES.

THESE VALVES ARE USED TO THE START, STOP AND DIRECTION OF FLOW.

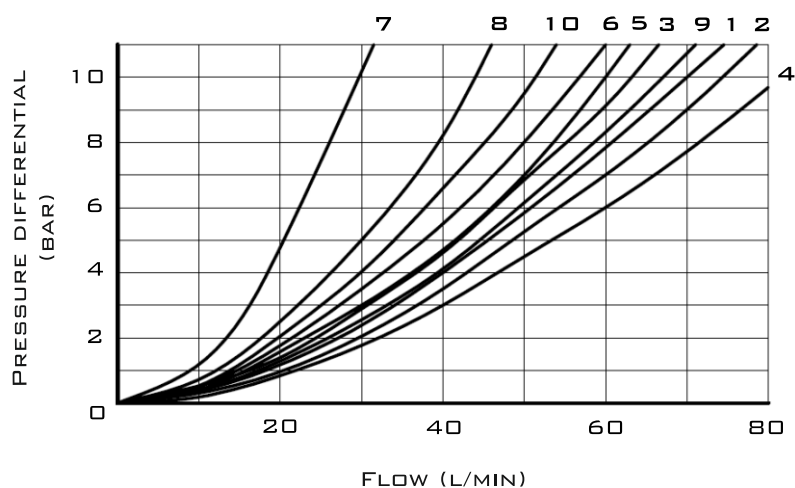


**TECHNICAL DATA**

SIZE		6
MAX. FLOW RATE (L/MIN)		80
OPERATING PRESSURE (MPA)	A, B, P PORTS	31.5
	T PORT	16
WEIGHT (KG) WITHOUT/WITH HANDLE	1 SOLENOID	1.6/2.2
	2 SOLENOIDS	2.2/2.8
VALVE BODY (MATERIAL)		CASTING PHOSPHATING SURFACE

**CHARACTERISTIC CURVES**

$\Delta P$ -Q CHARACTERISTIC CURVES



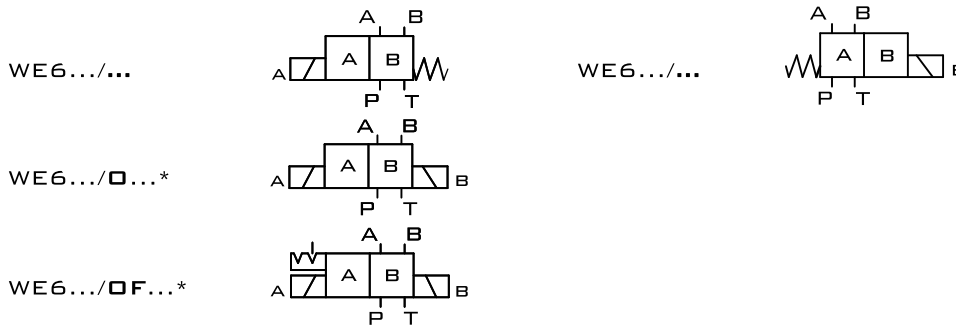
7 CURVE - SPOOL SYMBOL "R" IN SHIFTED POSITION B → A;  
8 CURVE - SPOOL SYMBOL "G" AND "T" IN CENTRAL POSITION;  
9 CURVE - SPOOL SYMBOL "H" AND "T" IN CENTRAL POSITION P → T.

SPOOL SYMBOL	FLOW DIRECTION			
	P - A	P - B	A - T	B - T
A, B	3	3	-	-
C	1	1	3	1
D, Y	5	5	3	3
E	3	3	1	1
F	1	3	1	1
G	6	6	9	9
H	2	4	2	2
J, Q	1	1	2	1
L	3	3	4	9
M	2	4	3	3
P	3	1	1	1
R	5	5	4	-
T	10	10	9	9
U	3	3	9	4
V	1	2	1	1
W	1	1	2	2



**SCHEMES**

**SCHEMES OF 2-POSITION DIRECTIONAL SPOOL VALVES  
VERSIONS WITH POSITIONS A, B**



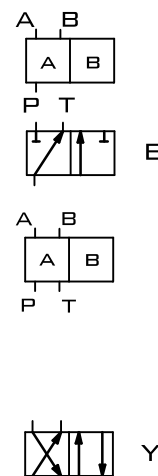
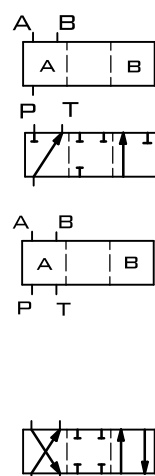
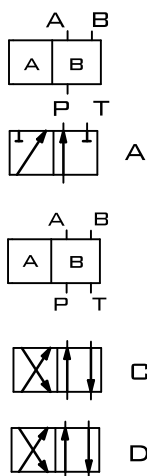
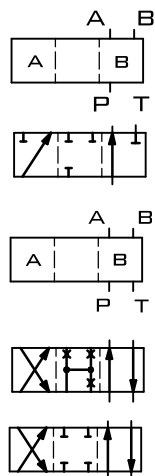
\* - VERSIONS AVAILABLE ONLY FOR SPOOL SCHEMES: A, C, D

**WORKING AND  
INDIRECT POSITIONS**

**WORKING  
POSITIONS**

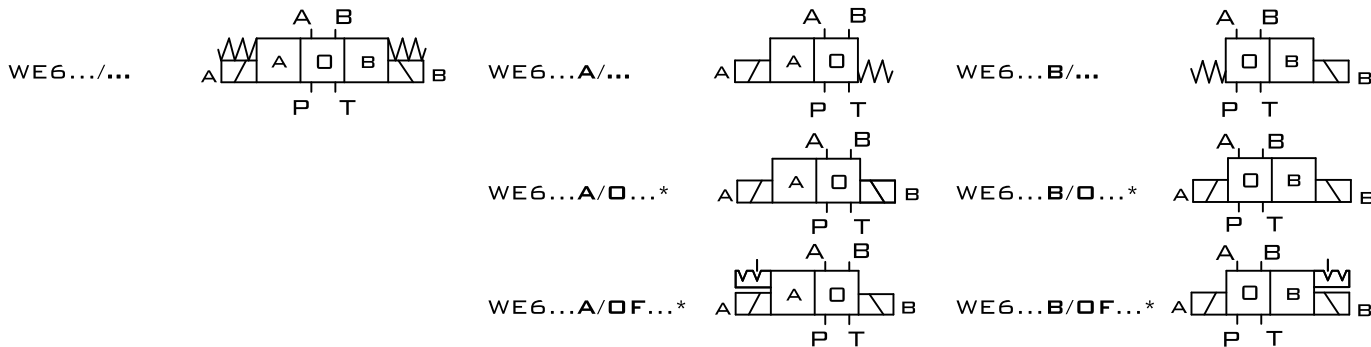
**WORKING AND  
INDIRECT POSITIONS**

**WORKING  
POSITIONS**



**SCHEMES OF 3-POSITION  
DIRECTIONAL SPOOL VALVES**

**SCHEMES OF 2-POSITION DIRECTIONAL SPOOL VALVES  
VERSIONS WITH POSITIONS A, O    VERSIONS WITH POSITIONS O, B**



\* - VERSIONS AVAILABLE ONLY FOR SPOOL SCHEMES: EA, GA, HA, JA, MA, EB, GB, HB, JB, MB

**SEE ALSO:  
WE10, WEH**

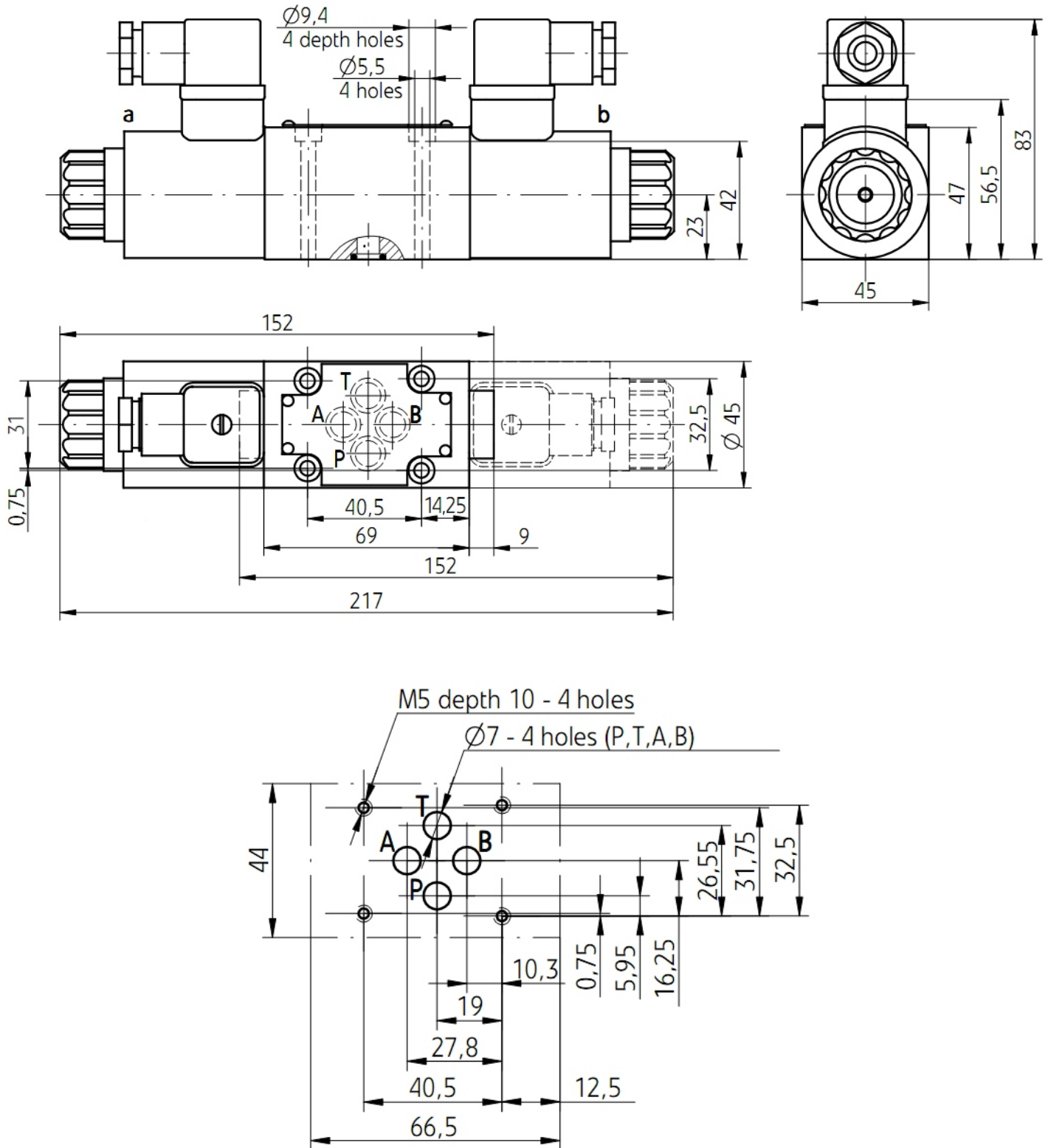
**SCHEMES**

HYDRAULIC SCHEMES OF SPOOLS

WORKING AND INDIRECT POSITIONS	WORKING POSITIONS	WORKING AND INDIRECT POSITIONS	WORKING POSITIONS	WORKING AND INDIRECT POSITIONS	WORKING POSITIONS

\* - FLOW SECTION FOR SPOOL W IN CENTRAL POSITION: 3 % NOMINAL FLOW

**SUBPLATE INSTALLATION DIMENSIONS**



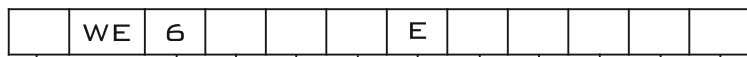


**DISTRIBUTORI  
OLEODINAMICI**

**WE6**

SOLENOID OPERATED  
DIRECTIONAL CONTROL VALVES

**ORDER CODE**



3=3-WAY  
4=4-WAY

6=6 SIZE

SPOOL TYPE

6X=60-69 SERIES

NO CODE=WITH SPRING RETURN  
 □=WITHOUT SPRING RETURN  
 □F=WITHOUT SPRING RETURN  
 WITH DETENT

E=STANDARD SOLENOID

NO CODE=NBR SEALS  
 V=FKM SEALS

Z5L=SQUIRE PLUGS WITH LAMP

NO CODE=WITHOUT THROTTLE INSERT  
 B0.8=THROTTLE 0.8 MM  
 B1.0=THROTTLE 1.0 MM  
 B1.2=THROTTLE 1.2 MM

N9=WITH CONCEALED HAND EMERGENCY

G12=DC12V  
 G24=DC24V  
 W110R=AC110V  
 W220R=AC220V