

MOTOR START CAPACITOR

Product character

Aluminium shell/Sekelite/plastic/ABS shell and double pins,lead cable.Small volume,large capacitance, low spoilage,stable capability etc.

Application

Helping A.C single-phase motor starting.



JY-MOTOR START

FOR START



产品特点:

- 铝壳、胶木壳或ABS外壳，双插片及电缆引出。体积小重量轻、容量大、损耗小、性能稳定。

Product character:

- Aluminium shell/bakelite/plastic/ABS shell and double pins,lead cable.Small volume,large capacitance, low spoilage,stable capability etc.

技术参数 Technical Data

执行标准 Performance standard	GB/T3667.2-2008/ IEC60252-2:2003
使用温度 Climate type	-10℃~+55℃
额定电压 Rated voltage	110~330VAC
标准电容量范围及允许偏差 Standard capacitance & tolerance	50~1000 μ F (-10%~+20%)
损耗角正切值 Loss tangent	0~+20%
耐久性 Durability	+55℃,110~165VAC, 1秒通, 59秒断, 30000次后; On 1 second, off 59 seconds,30000 times
	+55℃,220~330VAC, 1秒通, 59秒断, 15000次后; On 1 second, off 59 seconds,15000 times
	电容量变化率: $\pm 15\%$ 初始测量值以内 Changing rate of capacitance: $\pm 15\%$ within original measuring value
	损耗角正切值 tangent of loss angle: ≤ 0.20
引出端间耐电压 Withstand Voltage Between Terminals	施加1.2倍的工作电压2秒钟无击穿 1.2times working voltage, no breakdown within 2seconds
引出端与外壳间耐电压 Withstand Voltage Between Terminal and case	2000VAC 60秒无击穿 (2000VAC 60seconds,no break down)

用途:

- 与交流单相电机配套使用帮助电机启动。

Application:

- Helping A.C single-phase motor starting.

Dimensions(mm)

容量 (μ F)	110/125V	125V	220/275V	250V	330V
50UF	34×60	34×60	34×70	34×80	42×80
75UF	34×60	34×60	34×70	34×80	42×80
100UF	34×60	34×60	34×70	34×80	42×80
150UF	34×70	34×70	34×70	50×100	50×100
200UF	40×70	40×70	40×70	50×100	50×100
250UF	40×90	40×90	45×100	50×100	50×100
300UF	40×90	40×90	45×100	50×100	50×100
350UF	45×90	45×90	45×100	50×100	50×100
400UF	45×100	45×100	45×100	50×100	50×100
500UF	45×100	45×100	45×100	50×110	
600UF	45×100	50×100	50×100	50×110	
700UF	50×100	50×100	50×100		
800UF	50×100	50×100	50×100		
1000UF	50×100	50×100			
1200UF	50×100	50×100			

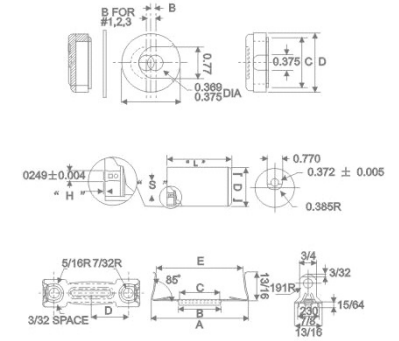
备注: 可根据客户要求的规格生产
Remarks: The specifications can be according to clients requests

JY-MOTOR START

FOR START



Products Overall Dimension



用途:

- 与交流单相电机配套使用帮助电机启动。

Application :

- Helping A.C single-phase motor starting.



Dimensions(mm)

容量 (μF)	W(V) SIZE DXH(MM)	110/125V	125V	220/275V	250V	330V
30-52		36×70	36×70	36×70	36×86	46×86
47-56		36×70	36×70	36×86	36×86	46×86
53-64		36×70	36×70	36×86	36×86	46×111
64-86		36×70	36×70	46×86	46×86	46×111
88-106		36×70	36×86	46×86	46×86	52×86
108-130		36×70	36×86	46×86	46×111	52×86
124-149		36×70	36×86	46×111	46×111	52×111
130-156		36×70	46×86	46×111	46×111	52×111
145-193		36×70	46×86	52×86	52×86	52×111
180-227		36×70	46×86	52×86	52×86	52×111
216-259		36×86	46×86	52×111	52×111	52×111
233-280		36×86	46×111	52×111	52×111	52×111
243-324		36×86	46×111	52×111	52×111	52×111
324-389		46×86	52×86	52×111	52×111	
340-516		46×86	52×86	52×111	52×111	
460-708		46×110	52×111			
645-960		52×86	52×111			
815-978		52×86	52×111			
829-1020		52×111	52×111			
1000-1224		52×111				

备注: 可根据客户要求的规格生产
Remarks: The specifications can be according to clients requests

产品特点:

- 铝壳、酚醛树脂、塑胶或ABS外壳, 双插片及电缆引出。体积小重量轻、容量大、损耗小、性能稳定。

Product character:

- Aluminium shell/Sekelite/plastic/ABS shell and double pins,lead cable.Small volume,large capacitance, low spoilage,stable capability etc.

技术参数 Technical Data

执行标准 Performance standard	GB/T3667.2-2008/ IEC60252-2:2003
使用温度 Climate type	-10℃~+55℃
额定电压 Ratd voltage	110~330VAC
标准电容量范围及允许偏差 Standard capacitance & tolerance	50~1000 μ F (-10%~+20%)
损耗角正切值 Loss tangent	0~+20%
耐久性 Durability	+55℃,110~165VAC, 1秒通, 59秒断, 30000次后; On 1 second, off 59 seconds,30000 times
	+55℃,220~330VAC, 1秒通, 59秒断, 15000次后; On 1 second, off 59 seconds,15000 times
	电容量变化率: ±15%初始测量值以内 Changing rate of capacitance:±15% within original measuring value
	损耗角正切值 tangent of loss angle:≤0.20
引出端间耐电压 Withstand Voltage Between Terminals	施加1.2倍的工作电压2秒钟无击穿 1.2times working voltage, no breakdown within 2seconds
引出端与外壳间耐电压 Withstand Voltage Between Terminal and case	2000VAC 60秒无击穿 (2000VAC 60seconds,no break down)

JY-HARD CAPACITOR

FOR HEATING PUMP

特点用途

- 马达转矩倍加器是由交流电动机启动用铝电解电容器与PTC热敏电阻或继电器串联组成。该产品具有高可靠、长寿命的特点，能在低电压时提高转矩并启动压缩机。此产品适用于频率为50Hz至60Hz额定电压为110VAC至277VAC制冷压缩机、热泵等重负荷及频繁启动的电动机上作起动用。

Features and Application:

- SPP Series motor torque multiplier (Hart starter) is comprised of motor start capacitor and PTC thermistor or relay in series. This product has the characters, such as high reliability, long life time. And it can increase torque at low voltage and can start compressor. It applies to refrigeration compressor, heating pump and often starting motor with frequency 50Hz to 60Hz, rated voltage 110VAC to 277VAC for starting function.

技术参数 Technical Data

产品编号 Part Number	工作电压(VAC) Operating Voltage(VAC)	适用压缩机功率范围 Equipment Range	推荐使用压缩机 功率范围 Recommended Range	力矩 Increased Torque
SPP5	115-277	1/2-5HP	1/3-2HP	200%-500% (270 oz.in.)
SPP6	115-277	1/2-10HP	1/2-4HP	200%-500% (390 oz.in.)
SPP7	115-277	1/2-10HP	1/2-4HP	200%-500%(390 oz.in.)

产品编号 Part Number	工作电压 Operating Voltage (VAC)	电容量 Capacitance (μ F)	推荐使用压缩 机功率范围 Recommended Range	动作时间及动作温度 OVERLOAD PROTECTOR		
				动作时间 Break Time(s)	开启温度 Open Temp	关闭温度 Close Temp
810	115	145-174	1/12~1/5HP	5~17 (12A/24°C)	120°C ±5°C	60°C ±9°C
410	115	243~292	1/4~1/3HP	5~17 (22A/24°C)	120°C ±5°C	60°C ±9°C

Dimensions(mm)

型号 TYPE	电压 Voltage(VAC)	电容量 Capacitance(μ F)	尺寸 DXH(MM)
SPP5	115/277	43~53	36×86
SPP6	115/277	130~156	46×86
SPP7	115/277	161~193	46×86
810	115	145~174	36×86
410	115	243~292	36×86

备注：可根据客户要求的规格生产
Remarks: The specifications can be according to clients requests

