



**Utilizzo**  
**Use**  
**Utilización**

|  |  |  |
|--|--|--|
| <p><b>Herbicides</b></p> <p>Suitable for</p> | <p><b>Fungicides</b></p> <p>Suitable for</p> | <p><b>Insecticides</b></p> <p>Suitable for</p> |
|--|--|--|

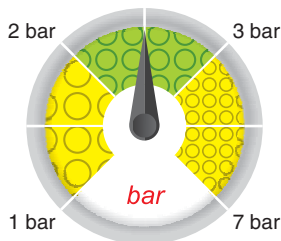
**Dimensioni (mm)**  
**Size (mm)**  
**Dimensiones (mm)**

- Copertura costante in tutto l'intervallo delle pressioni.
- Angolo costante di 110° al variare della pressione già da 1 bar.
- Riduce la deriva a pressioni di 1 -1,5 bar e garantisce un'eccellente copertura già a 1,5 - 2 bar.
- Stampato in Delrin®, ad alta stabilità chimica, che conferisce ottime caratteristiche di durata.

- Smooth coverage within a wide pressure range.
- Steady 110° jet angle as pressure changes, from 1 bar.
- They reduce drift at 1 - 1.5 bar and ensure a good coverage starting from just 1.5 - 2 bar.
- Made of molded Delrin®, a polymer ensuring high chemical stability and an exceptionally long useful life.

- Cobertura constante en un amplio rango de presiones.
- Ángulo constante de 110° al variar la presión ya desde 1 bar.
- Reduce la deriva con presiones de 1 -1,5 bar y garantiza una excelente cobertura a 1,5 - 2 bar.
- Moldeado en Delrin®, material con alta estabilidad química, que otorga excepcionales características de duración.

|  |   |
|--|---|
| <p><b>110°</b></p> <p>Spraying angle</p>   | <p><b>Boom</b></p> <p>Treatment</p>                               |
| <p><b>Acetal Resin</b></p> <p>Material</p> | <p><b>ISO 10625</b></p> <p>Colour coding</p>                      |
| <p><b>402900xx</b></p> <p>Cap</p>          | <p><b>25 pcs.</b></p> <p>cod. + <b>B2</b></p> <p>Blister pack</p> |






Copertura  
Spray coverage  
Cobertura


50 cm  
50 cm  
> 50%  
Distanza sulla barra  
Boom spacing  
Distancia en la barra

Diagramma di distribuzione ugello singolo  
Single nozzle distribution pattern  
Diagrama de distribución boquilla individual

Diagramma di distribuzione su barra  
Boom distribution pattern  
Diagrama de distribución en la barra

Dimensione delle gocce su bersaglio  
Drop size pattern on target  
Dimensiones de las gotas en el blanco

| COD.<br>CODE<br>CÓD. | <br>bar | <br>drop | <br>l/min | l/ha (spazio tra gli ugelli: 50 cm)<br>l/ha (nozzle spacing: 50 cm)<br>l/ha (espacio entre las boquillas: 50 cm) |        |        |         |         |         |         |         |         |         |
|----------------------|--|---|--|--|--------|--------|---------|---------|---------|---------|---------|---------|---------|
|                      |  |   |  | 4 km/h   | 6 km/h | 8 km/h | 10 km/h | 12 km/h | 14 km/h | 16 km/h | 18 km/h | 20 km/h | 25 km/h |
| WR11001              | 1  | F   | 0.23   | 69   | 46     | 35     | 28      | 23      | 20      | 17      | 15      | 14      | 11      |
|                      | 2  | F   | 0.33   | 98   | 65     | 49     | 39      | 33      | 28      | 24      | 22      | 20      | 16      |
|                      | 3  | F   | 0.40   | 120  | 80     | 60     | 48      | 40      | 34      | 30      | 27      | 24      | 19      |
|                      | 5  | VF  | 0.52   | 155  | 103    | 77     | 62      | 52      | 44      | 39      | 34      | 31      | 25      |
|                      | 7  | VF  | 0.61   | 183  | 122    | 92     | 73      | 61      | 52      | 46      | 41      | 37      | 29      |
| WR110015             | 1  | F   | 0.35   | 104  | 69     | 52     | 42      | 35      | 30      | 26      | 23      | 21      | 17      |
|                      | 2  | F   | 0.49   | 147  | 98     | 73     | 59      | 49      | 42      | 37      | 33      | 29      | 24      |
|                      | 3  | F   | 0.60   | 180  | 120    | 90     | 72      | 60      | 51      | 45      | 40      | 36      | 29      |
|                      | 5  | F   | 0.77   | 232  | 155    | 116    | 93      | 77      | 66      | 58      | 52      | 46      | 37      |
|                      | 7  | VF  | 0.92   | 275  | 183    | 137    | 110     | 92      | 79      | 69      | 61      | 55      | 44      |
| WR11002              | 1  | M   | 0.46   | 139  | 92     | 69     | 55      | 46      | 40      | 35      | 31      | 28      | 22      |
|                      | 2  | F   | 0.65   | 196  | 131    | 98     | 78      | 65      | 56      | 49      | 44      | 39      | 31      |
|                      | 3  | F   | 0.80   | 240  | 160    | 120    | 96      | 80      | 69      | 60      | 53      | 48      | 38      |
|                      | 5  | F   | 1.03   | 310  | 207    | 155    | 124     | 103     | 89      | 77      | 69      | 62      | 50      |
|                      | 7  | F   | 1.22   | 367  | 244    | 183    | 147     | 122     | 105     | 92      | 81      | 73      | 59      |
| WR110025             | 1  | M   | 0.58   | 173  | 115    | 87     | 69      | 58      | 49      | 43      | 38      | 35      | 28      |
|                      | 2  | F   | 0.82   | 245  | 163    | 122    | 98      | 82      | 70      | 61      | 54      | 49      | 39      |
|                      | 3  | F   | 1.00   | 300  | 200    | 150    | 120     | 100     | 86      | 75      | 67      | 60      | 48      |
|                      | 5  | F   | 1.29   | 387  | 258    | 194    | 155     | 129     | 111     | 97      | 86      | 77      | 62      |
|                      | 7  | F   | 1.53   | 458  | 306    | 229    | 183     | 153     | 131     | 115     | 102     | 92      | 73      |
| WR11003              | 1  | M   | 0.69   | 208  | 139    | 104    | 83      | 69      | 59      | 52      | 46      | 42      | 33      |
|                      | 2  | M   | 0.98   | 294  | 196    | 147    | 118     | 98      | 84      | 73      | 65      | 59      | 47      |
|                      | 3  | F   | 1.20   | 360  | 240    | 180    | 144     | 120     | 103     | 90      | 80      | 72      | 58      |
|                      | 5  | F   | 1.55   | 465  | 310    | 232    | 186     | 155     | 133     | 116     | 103     | 93      | 74      |
|                      | 7  | F   | 1.83   | 550  | 367    | 275    | 220     | 183     | 157     | 137     | 122     | 110     | 88      |
| WR11004              | 1  | M   | 0.92   | 277  | 185    | 139    | 111     | 92      | 79      | 69      | 62      | 55      | 44      |
|                      | 2  | M   | 1.31   | 392  | 261    | 196    | 157     | 131     | 112     | 98      | 87      | 78      | 63      |
|                      | 3  | M   | 1.60   | 480  | 320    | 240    | 192     | 160     | 137     | 120     | 107     | 96      | 77      |
|                      | 5  | M   | 2.07   | 620  | 413    | 310    | 248     | 207     | 177     | 155     | 138     | 124     | 99      |
|                      | 7  | M   | 2.44   | 733  | 489    | 367    | 293     | 244     | 209     | 183     | 163     | 147     | 117     |
| WR11005              | 1  | M   | 1.15   | 346  | 231    | 173    | 139     | 115     | 99      | 87      | 77      | 69      | 55      |
|                      | 2  | M   | 1.63   | 490  | 327    | 245    | 196     | 163     | 140     | 122     | 109     | 98      | 78      |
|                      | 3  | M   | 2.00   | 600  | 400    | 300    | 240     | 200     | 171     | 150     | 133     | 120     | 96      |
|                      | 5  | M   | 2.58   | 775  | 516    | 387    | 310     | 258     | 221     | 194     | 172     | 155     | 124     |
|                      | 7  | M   | 3.06   | 917  | 611    | 458    | 367     | 306     | 262     | 229     | 204     | 183     | 147     |
| WR11006              | 1  | C   | 1.39   | 416  | 277    | 208    | 166     | 139     | 119     | 104     | 92      | 83      | 67      |
|                      | 2  | M   | 1.96   | 588  | 392    | 294    | 235     | 196     | 168     | 147     | 131     | 118     | 94      |
|                      | 3  | M   | 2.40   | 720  | 480    | 360    | 288     | 240     | 206     | 180     | 160     | 144     | 115     |
|                      | 5  | M   | 3.10   | 930  | 620    | 465    | 372     | 310     | 266     | 232     | 207     | 186     | 149     |
|                      | 7  | M   | 3.67   | 1.100  | 733    | 550    | 440     | 367     | 314     | 275     | 244     | 220     | 176     |

|  | DIMENSIONE DELLE GOCCE<br>DROP SIZE RATING<br>DIMENSIONES DE LAS GOTAS |
|---|--|
| VF  | Molto fine-Very fine-Muy fina  |
| F   | Fine-Fine-Fina   |
| M   | Media-Medium-Media   |
| C   | Grossa-Coarse-Gruesa   |

Classificazione in accordo con lo standard ASABE S572.3 e la norma ISO25358

Classification according to ASABE S572.3 and ISO25358

Clasificación según ASABE S572.3 e ISO25358