

Isolation Remote Modules

Isolation RS-485 Analog I/O Remote Modules

A-1036+

1

OVERVIEW

- ※ Analog Output Channels : 6
- ※ 12-bit resolution
- ※ Software configurable for 4~20mA or 0~20mA output in individual channels
- ※ Burn-out Detection
- ※ Supports Modbus RTU / ASCII
- ※ LED Indicator
- ※ Surge , EFT And ESD Protection
- ※ Dual Watchdog Timer
- ※ Low Power Indicator
- ※ Operation Range: Up To 1200 Meters
- ※ Free PC Software "YottaUtility"
- ※ Isolation RS-485 Interface



For more information, please refer to www.yottacontrol.com

Display	
LED Indicators	Power
Power Supply	
Power Requirement	10~30 VDC
Analog Output	
Channels	6
Current Output	0~20 mA, 4~20mA
Current Load	Max. 500 Ω
Resolution	12-bit
Accuracy	±1 % of FSR
General	
Watchdog Timer	System & Communication
Connector	2 x plug-in terminal block (#14~28 AWG)
Temperature (Operating)	-10~70 °C (14~158 °F)
Humidity	5~95 %RH
Temperature (Storage)	-25~85 °C (-13~185 °F)
Interface	Isolation RS-485
Communication Protocol	Modbus/RTU & Modbus/ASCII
Communication Speed	Serial: From 1,200 to 115.2 k
Comm. Distance	Serial: 1.2 km
Data Flow Control	Yes

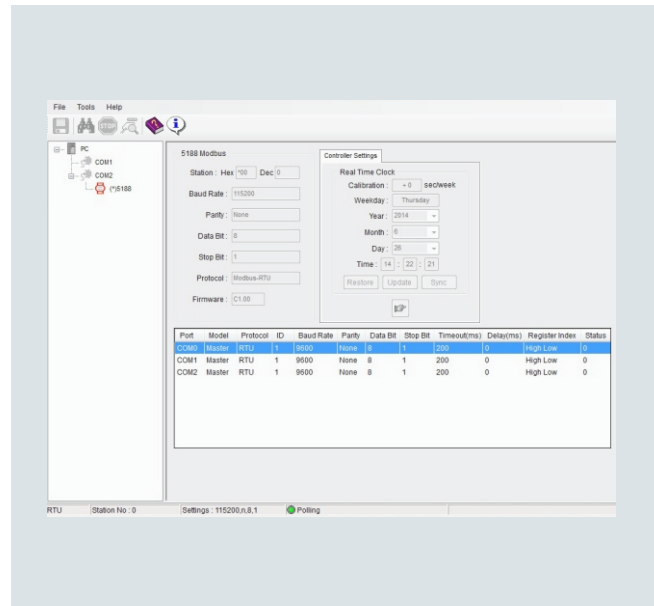
Monitoring and Database Software

DCS Monitoring and Database Software

YottaUtility

OVERVIEW

- ※ Monitor & Database Function
- ※ Use For Yottacontrol Whole Series Controller And TS-48 Time Switch
- ※ Windows98/ME/2000/XP/Vista/7/8/10
- ※ Quick Setup Distributed Device Parameter & Monitoring
- ※ Can Monitor DCS Program & Parameters
- ※ Can Monitor PLC Program & Parameters
- ※ Monitor & Database Can Use For SCADA
- ※ Real-Time Monitoring, Warning Setup
- ※ Monitor Hundreds Controllers & Distributed Devices
- ※ Component Name Comment
- ※ Easy Logical Program Function
- ※ Time Switch Series Edit
- ※ Multi Communicate Parameter Function
- ※ Support MODBUS TCP-IP/UDP-IP/RTU/ASCII
- ※ Quick Setup Controller RTC Parameter



For more information, please refer to
www.yottacontrol.com

APPLICATIONS

ELECTRONIC EQUIPMENT

- SORTING MACHINE
- LOADER & UNLOADER
- PACKAGING MACHINE
- DETECTOR
- CUTTING MACHINE
- LAMINATOR
- COATING MACHINE
- LAPPING MACHINE
- FEEDING SYSTEM
- PRECISION MACHINERY

ELECTROMECHANICAL EQUIPMENT

- SPRAYING MACHINE
- EVAPORATION
- MACERATOR
- CALENDER MACHINE
- FLUSHING MACHINE
- ELECTROPLATING MACHINE
- WELDING MACHINE
- PRESS MACHINE
- CUTTING MACHINE
- BENDING MACHINE
- BOBBIN MACHINE
- BURN-IN EQUIPMENT
- DIE CASTER
- HEATING PROCESSING

FOOD & BEVERAGE

- PACKAGING MACHINE
- SEAL-CAPPING MACHINE
- LABELLING MACHINE
- FORMING MACHINE
- BLENDER EQUIPMENT
- CASING MACHINE
- FILLING MACHINE
- DRYER EQUIPMENT
- WEIGHT SEPARATOR
- CAPPING MACHINE
- INJECTION MACHINE
- TEMPERATURE-CONTROL

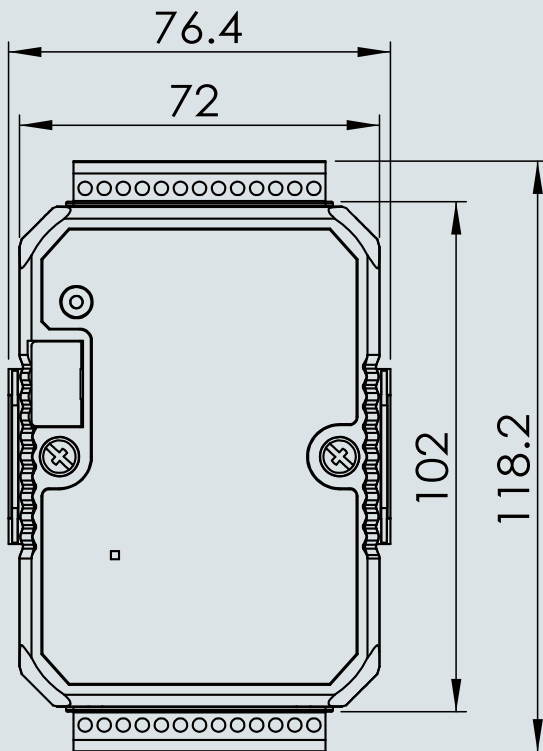
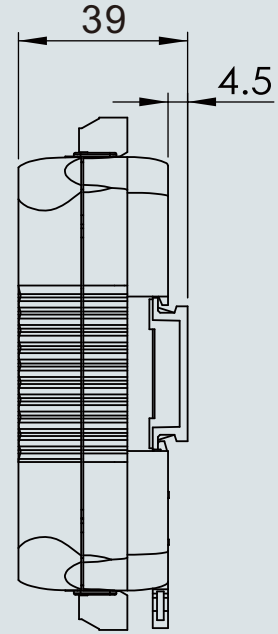
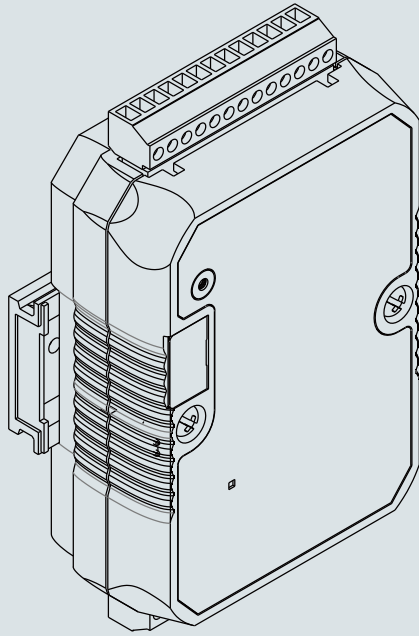
Dimension

Remote Modules

Remote Modules

3

Dimension



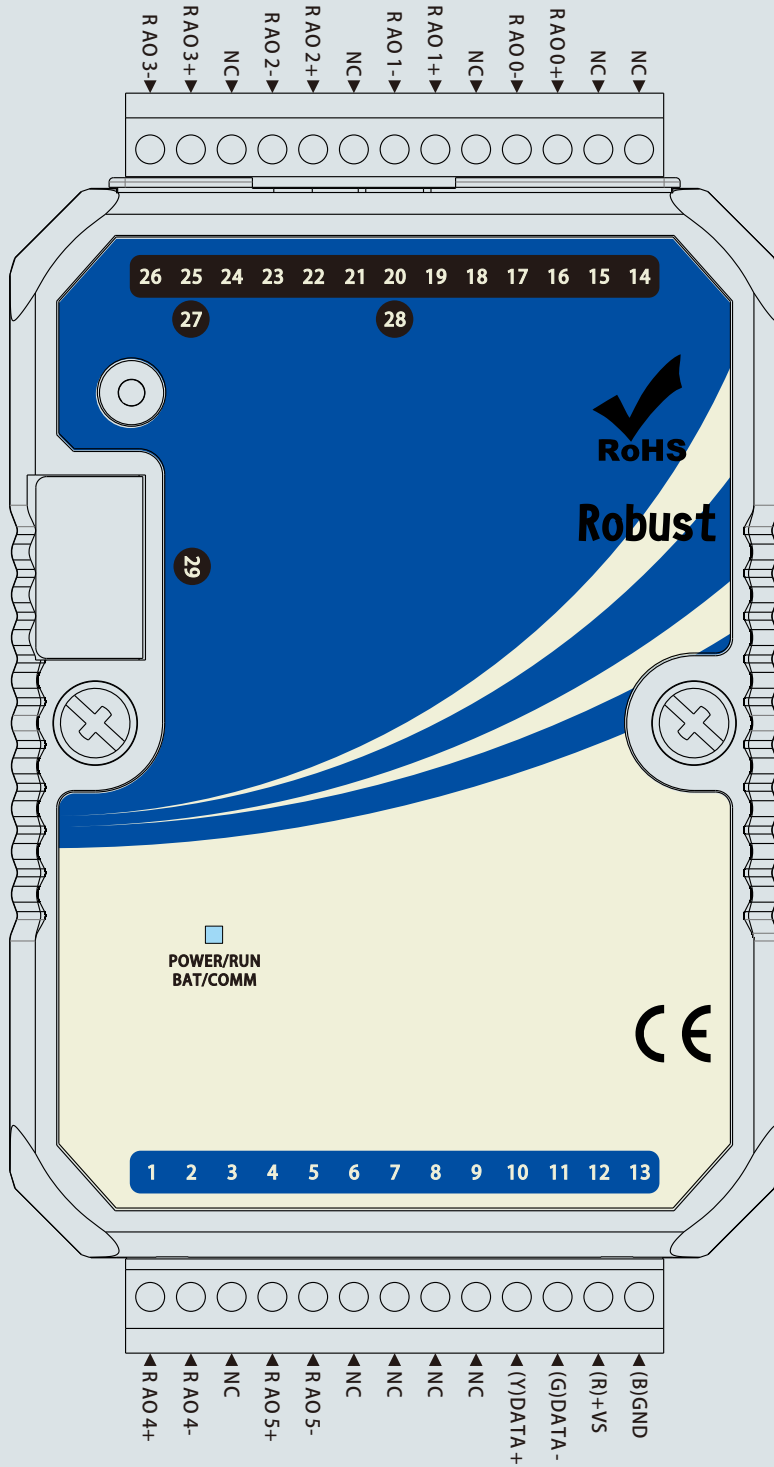
For more information, please refer to www.yottacontrol.com

Pin Assignments

Remote Modules

Remote Modules

Pin Table



Function	
1	RA04+
2	RA04-
3	NC
4	RA05+
5	RA05-
6	NC
7	NC
8	NC
9	NC
10	(Y)DATA +
11	(G)DATA -
12	(R)+VS
13	(B)GND
14	NC
15	NC
16	RA00+
17	RA00-
18	NC
19	RA01+
20	RA01-
21	NC
22	RA02+
23	RA02-
24	NC
25	RA03+
26	RA03-
27	NC
28	NC
29	NC

For more information, please refer to www.yottacontrol.com

Address Mapping

Remote Modules

Remote Modules

5

Mapping Table

A-1036+ Address Mapping				
Supported Modbus Code: 01/02/05/15				
00017-00022	0-5 Digital Output Value	R	R	
00081-00086	0-5 PWM Enable	R	R/W	0: Disable , 1: Enable
00097-00099	0-2 AB-Phase Enable	R	R/W	0: Disable , 1: Enable
00113-00115	0-2 Direction of AB-Phase	R/W	R/W	0: Dir+ , 1: Dir-
00129-00131	0-2 Power On Direction of AB-Phase	R	R/W	0: Dir+ , 1: Dir-
00145-00147	0-2 Communication Fail Safe Direction of AB-Phase	R	R/W	0: Dir+ , 1: Dir-
04097-06144	0-2047 Auxiliary Memory (M Flag)	R/W	R/W	
Supported Modbus Code: 03/04/06/16				
Address 4x	Item	NOR	INIT*	NOTE
40017-40022	0-5 Analog Output Value	R/W	R/W	0-4000: 4-20mA / 0-20mA
40033-40038	0-5 Power On Analog Output Value	R	R/W	0-4000: 4-20mA / 0-20mA
40049-40054	0-5 Communication Fail Safe Analog Output Value	R	R/W	0-4000: 4-20mA / 0-20mA
40081-40086	0-5 Analog Output Type	R	R/W	0: 4-20mA / 1:0-20mA
40097-40102	0-5 Analog Output Value (mA)	R	R	4/0-20 : 4/0mA-20mA
40113-40118	0-5 Analog Output Value (0.1mA)	R	R	40/0-200 : 4.0/0.0mA-20.0mA
40129-40134	0-5 Analog Output Value (0.01mA)	R	R	400/0-2000 : 4.00/0.00mA-20.00mA
40145-40150	0-5 Analog Output Value (FSR)	R	R	0-10000 : 0.00%-100.00% of FSR
40177	Communication Fail Safe Time Setting Value	R	R/W	0-32767 (sec) , 0:Disable
40179	All DO Value	R	R	
40211	Module Name 1	R	R	0x10 0x26
40212	Module Name 2	R	R	0x00 0x00
40213	Version 1	R	R	0x01 0x00
40214	Version 2	R	R	0x00 0x00
40215-40220	1-6 Mac Serial Number	R	R	
40300	Module" s ID In Normal Mode	R	R/W	1-255
40301	Protocol In Normal Mode	R	R/W	0:RTU , 1:ASCII
40302	Baudrate In Normal Mode	R	R/W	0 : 1200 bps , 1 : 2400 bps , 2 : 4800 bps , 3 : 9600 bps 4 : 14400 bps , 5 : 19200 bps , 6 : 28800 bps , 7 : 38400 bps 8 : 57600 bps , 9 : 115200 bps
40303	Parity In Normal Mode	R	R/W	0:none, 1:odd, 2:even
40304	Stop Bits In Normal Mode	R	R/W	0:1 bit , 1:2 bit
40305	Time Out Setting In Normal Mode	R	R/W	0-32767 (ms)
40609-40620	0-5 Current Output Value(32-bit)	R	R	32-bit Floating Value (IEEE754)(Float CD AB)
40641-40652	0-5 Current Output Value(32-bit) (mA)	R	R	32-bit Current Floating Value (IEEE754)(Float CD AB)
40705-40716	0-5 Current Output Value(32-bit)	R	R	32-bit Floating Value (IEEE754)(Float AB CD)
40737-40748	0-5 Current Output Value(32-bit) (mA)	R	R	32-bit Current Floating Value (IEEE754)(Float AB CD)
40801-40812	0-5 Current Output Value(32-bit)	R	R	32-bit Floating Value (IEEE754)(Float BA DC)
40833-40844	0-5 Current Output Value(32-bit) (mA)	R	R	32-bit Current Floating Value (IEEE754)(Float BA DC)
40897-40908	0-5 Current Output Value(32-bit)	R	R	32-bit Floating Value (IEEE754)(Float DC BA)
40929-40940	0-5 Current Output Value(32-bit) (mA)	R	R	32-bit Current Floating Value (IEEE754)(Float DC BA)
41251-41256	0-5 DO Status High Level	R	R/W	400/0-2000 : 4.00/0.00mA-20.00mA
41259-41264	0-5 DO Status Low Level	R	R/W	400/0-2000 : 4.00/0.00mA-20.00mA
41267-41272	0-5 Analog Output Offset (4mA)	R	R/W	-1000-1000
41275-41280	0-5 Analog Output Offset (20mA)	R	R/W	-1000-1000
41409-41414	0-5 Amplitude of PWM	R/W	R/W	0-4000: 4-20mA / 0-20mA
41425-41430	0-5 Frequency of PWM	R/W	R/W	10-10000 (0.05ms/pulse)
41441-41446	0-5 Duty Ratio of PWM	R/W	R/W	0-100(%)
41457-41459	0-2 Amplitude of AB-Phase	R/W	R/W	0-4000: 4-20mA / 0-20mA
41473-41475	0-2 Frequency of AB-Phase	R/W	R/W	10-10000 (0.05ms/pulse)
41489-41494	0-5 Power On Amplitude of PWM	R	R/W	0-4000: 4-20mA / 0-20mA
41505-41510	0-5 Power On Frequency of PWM	R	R/W	10-10000 (0.05ms/pulse)
41521-41526	0-5 Power On Duty Ratio of PWM	R	R/W	0-100(%)
41537-41539	0-2 Power On Amplitude of AB-Phase	R	R/W	0-4000: 4-20mA / 0-20mA
41553-41555	0-2 Power On Frequency of AB-Phase	R	R/W	10-10000 (0.05ms/pulse)
41569-41574	0-5 Communication Fail Safe Amplitude of PWM	R	R/W	0-4000: 4-20mA / 0-20mA
41585-41590	0-5 Communication Fail Safe Frequency of PWM	R	R/W	10-10000 (0.05ms/pulse)
41601-41606	0-5 Communication Fail Safe Duty Ratio of PWM	R	R/W	0-100(%)
41617-41619	0-2 Communication Fail Safe Amplitude of AB-Phase	R	R/W	0-4000: 4-20mA / 0-20mA
41633-41635	0-2 Communication Fail Safe Frequency of AB-Phase	R	R/W	10-10000 (0.05ms/pulse)
44001-46048	0-2047 Analog Auxiliary Memory (AM Flag)	R/W	R/W	

For more information, please refer to
www.yottacontrol.com