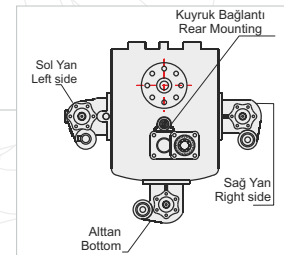
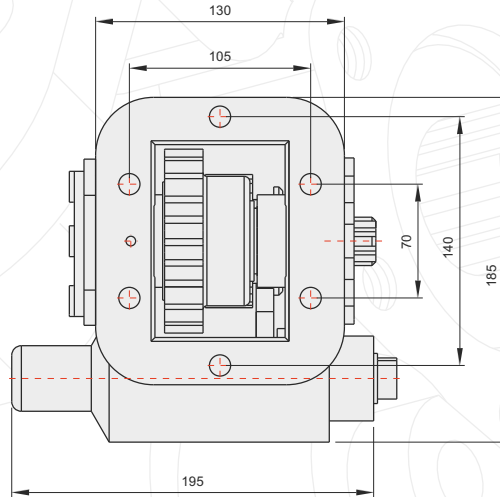
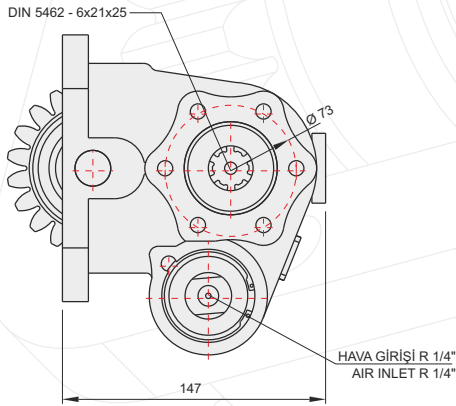
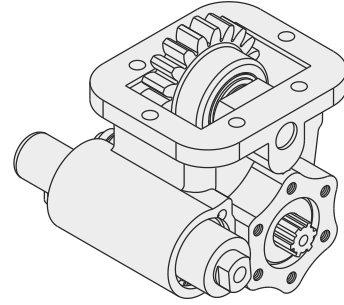


50412512



GENEL BİLGİLER/GENERAL DATA

P.T.O. KODU / P.T.O. CODE	50412512	
Tork / Torque	23 Kgm	225 Nm
Güç(1000 rpm) / Power	17,2 Hp	12,8 Kw
Devir / Speed	500 rpm	500 rpm
Oran / Ratio	1/1,25	1/1,25
Ağırlık / Weight	11 kg	24,3 lb
Bağlantı / Mounting	Sağ	Right
Kumanda / Control	Havali	Pneumatic
Dönüş / P.T.O. Rotation	Sağ - UNI	Right - UNI

Ana Şanzıman / Gearbox	Kullanılan Bazı Araçlar / Used Vehicles
EATON-HEMA 570-542-640 L SMA -SMS-SMR-SMH-SMJ-CMA-CMR	162.22-162.25-170.25 FATİH / 2114- 2116-2517-FORD CARGO BEDFORD GETENO / 1830 INTER

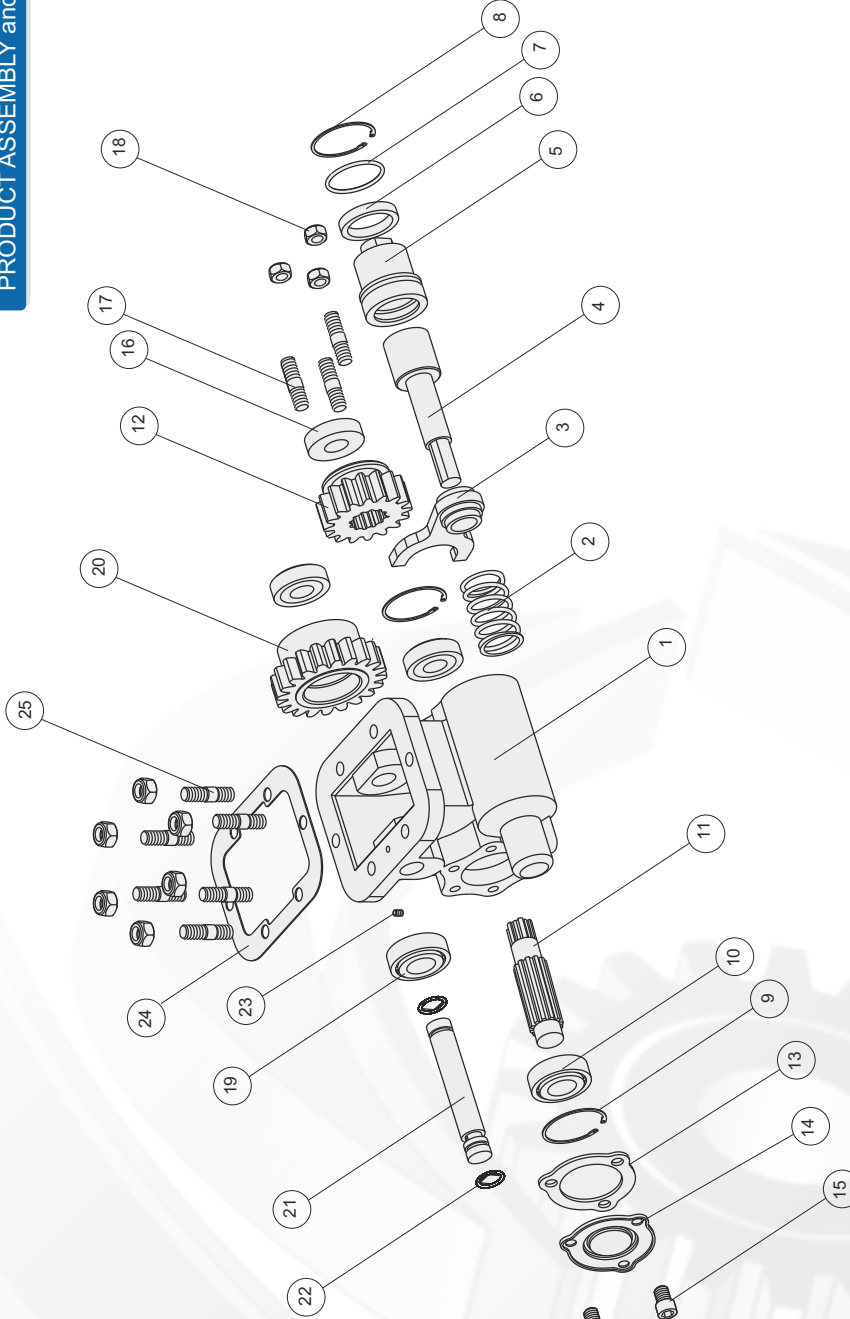
Seçeğinizin pompanın dönüş yönü, P.T.O. dönüş yönü ile ters olmalıdır.
The rotation of the chosen pump has to be opposite with the rotation of P.T.O.

P.T.O. montaj edildikten sonra ana şanzıman yağını tamamlayın.
Fill the oil of the gear box after mounting the P.T.O.

ÜRÜN MONTAJ ve PARÇA LİSTESİ
PRODUCT ASSEMBLY and PART LIST

P.T.O.

POWER TAKE OFF



EATON-HEMA 570 SAĞ

Adet	Parça No	Parça Adı	Kod
1	1	Gövde	50412512-01
1	2	Yav	50412512-02
1	3	Hilal	50412512-03
1	4	Prömatik Mil	50412512-04
1	5	Prömatik Kovan	50412512-05
1	6	38x48, 1x8 Nutring	50412512-06
1	7	3.53x42,86 O-ring	50412512-07
1	8	Tel Segman	50412512-08
2	9	472-52 Segman	50412512-09
2	10	6205 Rulman	50412512-10
1	11	6x12 Mil	50412512-11
1	12	Alt Dişli	50412512-12
1	13	Conta	50412512-13

Adet	Parça No	Parça Adı	Kod
1	14	Pto Yan Kapak	50412512-14
3	15	M10x16 Civata	50412512-15
1	16	25x52x10 Keçe	50412512-16
3	17	M10x45 Saplama	50412512-17
9	18	M10 Somun	50412512-18
2	19	30204 Rulman	50412512-19
1	20	Üst Dişli	50412512-20
1	21	Üst Mil-20	50412512-21
2	22	2.35x20 O-ring	50412512-22
1	23	M6x10 Setskur	50412512-23
1	24	Conta	50412512-24
6	25	M10x3/8 Saplama	50412512-25
46		TOPLAM PARÇA SAYISI	