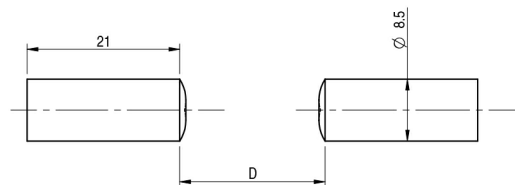




Indicative image



Detection properties

Distance with SSF	3.000 mm
Distance with FS1	3.000 mm
Distance with FX3	8.000 mm
Distance with FX4	10.000 mm
Distance with F1R	410

Application

Function Principle	P/R
Fibre model	CV/RB6-**

Mechanical data

Operating temperature	-40°C....+250°C
Ø optical fibre core	1
Head shape	Ø 8,5 mm
Material	glass, nickel plated brass
thread	M4

Test/Approvals

Degree of protection	IP67 (EN60529)
----------------------	----------------

M.D.Micro Detectors S.p.A.

Strada S.Caterina, 235

41122 Modena (MO)

Tel. 059 420411

Fax 059 253973

E-mail info@microdetectors.com

date of printing

23/02/2021 09:06:15