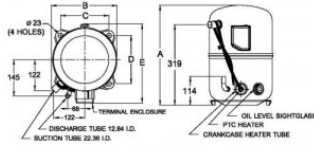


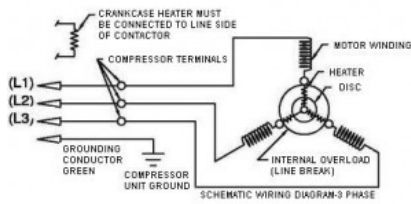


PRINCIPAL DIMENSIONS - MM



A: 399 B: 258 C: 190 D: 190 E: 313

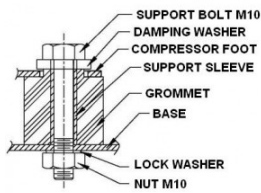
SCHEMATIC WIRING DIAGRAM 3 PHASE



SCHEMATIC WIRING DIAGRAM -

-

MOUNTING KIT



-

Electrical : 308-420 V/ 50 Hz., 440-460 V/ 60 Hz. 3 Phase - HP

Nominal Performance

Capacity	5,598 / 6,536 Watts
	19,100 / 22,301 BTU/Hr
	4,814 / 5,620 Kcal/Hr
Power Input	2,625 / 3,035 Watts
Locked Rotor Amps	40.00 / 13.00 Amps
Max Continuous Current	- / - Amps
Rated Load Amps	5.80 / 5.80 Amps
COP	2.13 / 2.15 Watts / Watts
EER	7.28 / 7.35 BTU/W-Hr

Testing Conditions

Condensing Temperature	54.40 °C	129.92 °F
Evaporating Temperature	-6.70 / - °C	19.94 / - °F
Liquid Temperature	46.10 °C	114.98 °F
Return Gas Temperature	35.00 °C	95.00 °F
Ambient Temperature	35.00 °C	95.00 °F

Application

Evaporating Temp. Range	MBP	@ -15.00 °C to 13.00 °C (5.00 F to 55.40 °F)
	Heat Pump	- to - (- to -)

Refrigerant	R404A
Refrigerant Flow Control	Capillary tube/Expansion valve
Compressor Cooling	Fan

Compressor and Motor data

Compressor Type	Reciprocating
Displacement	65 cc.
Oil Type	Polyolester Oil
Oil Charge	2030 cc.
Motor Type	3 PHASE ;2 Pole 2850 / 3450 r/m
Voltage Range	342-462/- Volts 414-506/- Hz.

Winding Resistance at 25 ° C

L1-L2	2.85 Ohms
L1-L3	2.85 Ohms
L2-L3	2.85 Ohms

Weight with Oil	40.00 Kg.
Weight with Oil and Accessories	40.40 Kg.

Electrical Components

Motor Protector

Type	Internal Overload
Model Number	4042KKE656-2
Open / Close	95-105 / 70-52 ° C
1st Cycle trip at 25 ° C	39.00 Amps(main) - Amps(start)

Motor Starter

Type	-
Model Number	-
Pick Up (max.)	- Amps
Drop Out (min.)	- Amps
Terminal Cover	4040KLD901
Start Capacitor	- µF - VAC.
Disch Resistor for Start Cap	-
Run Capacitor	- µF - VAC.

Mounting Kit

Rubber Grommet	4007KLD905
Sleeve Grommet	4023KLD903
Washer	-

Since we are constantly improving our product , the specification are subject to change without notice.

REV. DATE 08-06-2012 C / N No. 0278/12

Certificate Marks



RoHS