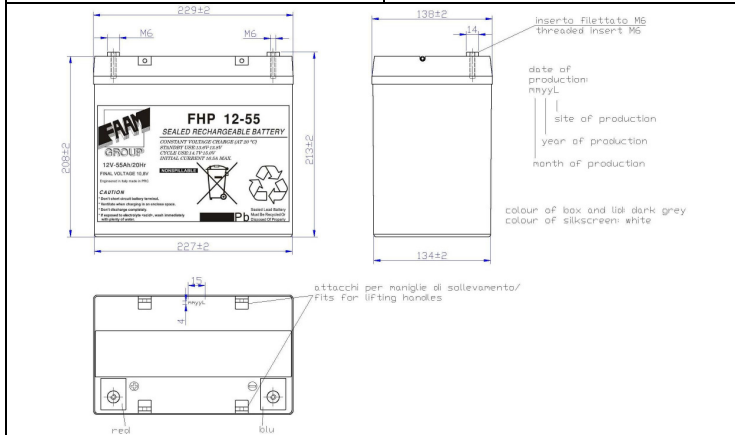




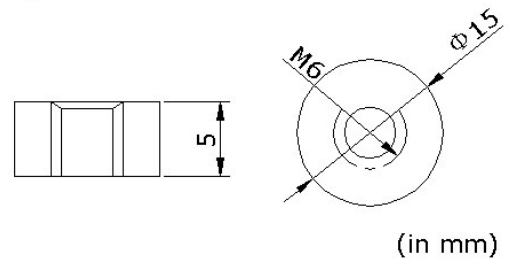
FHP 12-55

PHYSICAL SPECIFICATION

Nominal Voltage	12V	Stationary block sealed VRLA Box Material: ABS black color FV0 (UL94 V-0) Lid Material: ABS black color FV0 (UL94 V-0) Positive and negative flat plates with casted grids Pb/Ca/Sn Technology AGM VRLA regulated with valves (a valve per each cell) Standards: CEI EN 60896 Parts 21 and 22 Temperature exercise: -20°C +50°C Design Life : >10years (at 20°C)	
Nominal Capacity (20Hr)	55Ah		
Dimensions	Length		229 ±2mm
	Width		138 ±2mm
	Box Height	208 ±2mm	
	Total Height	213 ±2mm	
Drawing n°400266-0	Weight 17,5 Kg ±5%		
Standard Terminal	Bolt Type: M6		



Bolt-and-nut terminal
Bolt Type: M6



ELECTRICAL SPECIFICATION

Characteristics			Discharge curves @ 20°C	
Rated Capacity	20 hours rate 1,8Vpc at 20°C	55,00Ah	Discharge Characteristics(25°C/77 °F) 	
	10 hours rate 1,8Vpc at 20°C	50,00Ah		
	5 hours rate 1,7Vpc at 20°C	45,75Ah		
	3 hours rate 1,7Vpc at 20°C	42,48Ah		
	1 hour rate 1,6Vpc at 20°C	35,10Ah		
Capacity affected by temperature	40°C	102%		
	20°C	100%		
	0°C	85%		
Internal Resistance 6 mΩ ±10%		SCC 1600 A ±10%		
Constant Voltage Charge	Cycle use	Initial Charging Current less than 13,7 A Voltage 14,70~15,00V at 20°C Temperature Coefficient -30 mV/°C		
	Stand-by use	No limit on Initial Charging Current Voltage 13,60~13,80V at 20°C Temperature Coefficient -20 mV/°C		

Constant Current (Amp) and Constant Power (Watt/cell) Discharge Table at 20°C

Final V./Time		5min	10min	15min	20min	30min	45min	60min	90min	2hours	3hours
9,9V	A	192,75	129,51	99,96	81,51	57,48	41,92	33,68	24,69	19,71	14,80
	W	328,19	228,98	178,98	150,17	107,04	78,67	63,91	51,21	39,22	27,18
10,2V	A	167,48	118,54	92,23	76,04	54,17	40,58	32,13	23,97	19,01	14,16
	W	291,65	210,58	167,18	141,07	101,26	77,28	61,94	50,22	38,05	28,35
10,8V	A	134,85	99,03	79,03	67,57	50,09	37,66	29,82	22,15	17,60	13,25
	W	246,69	182,71	147,09	126,89	95,05	72,52	57,75	46,50	35,53	26,96