

Telebelt® TBS 130 & TBS 600

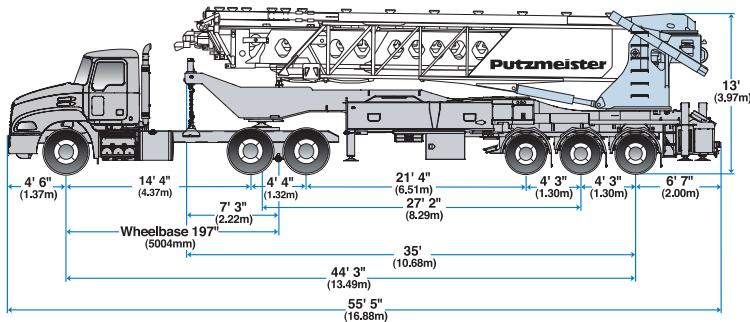
Semi-trailer Telescopic Belt Conveyor

Putzmeister



TBS 130 & TBS 600

- Mass concrete placement
- Places materials from sand to 6" (152mm) rock
- Smooth surge-free conveying results
- Tractor-trailer configuration
- Chassis versatility meets local requirements



Telebelt TBS 130 & TBS 600 Semi-trailer Advantages:

- **Maneuverable 5th wheel trailer configuration**
 - Greater mobility on-site
 - Tighter turning radius
 - Reduced axle loads
- **Chassis versatility**
 - The TBS 130 and TBS 600 can be driven with either a two- or three-axle chassis, and the Telebelt trailer is configured with three axles
 - Chassis selection can be based on location-specific weight restrictions
 - Customers around the world can match the Telebelt trailer axle configuration with a chassis that meets their preferences and needs
- **Material placement does not rely on the chassis engine**
 - Self-contained Deutz engine
 - Promotes lower operation costs and reduced fuel consumption
 - Without chassis, machine footprint is reduced
 - The chassis can be used for other tasks on- or off-site
 - Towable dolly available to move TBS 130 or TBS 600 on-site with a dozer, wheel loader or other available equipment
- **Application flexibility**
 - Ideal for mass concrete placement
 - Fast delivery of any flowable material up to 4" (100mm) for the TBS 130 and 6" (152mm) for the TBS 600

Telebelt® TBS 130 & TBS 600 Preliminary Specifications

Conveyors	TBS 130 5-arm		TBS 600 4-arm	
Conveyor horizontal reach —				
Maximum at 0°	126' 6"	(38.56m)	102'	(31.08m)
Maximum at 29°	110' 9"	(33.74m)	89' 3"	(27.20m)
Conveyor belt width	18"	(457mm)	24"	(610mm)
Feed conveyor length	38'	(11.60m)	38'	(11.60m)
Feed conveyor belt width	18"	(457mm)	24"	(610mm)
Trunk/end hose length	15'	(4.57m)	15'	(4.57m)
Discharge height from grade —				
Maximum at 29°	68' 3"	(20.81m)	55'	(16.78m)
Maximum at -15°	-25' 10"	(-7.86m)	-20' 9"	(-6.34m)
Rated capacity at 0°	6 yd ³ /min	(4.60m ³ /min)	10 yd ³ /min	(7.65m ³ /min)
main & feed conveyors	360 yd ³ /hr	(275m ³ /hr)	600 yd ³ /hr	(458m ³ /hr)
Rated capacity up to 20°	3.80 yd ³ /min	(2.90m ³ /min)	6.30 yd ³ /min	(4.81m ³ /min)
main & feed conveyors	230 yd ³ /hr	(175m ³ /hr)	378 yd ³ /hr	(288m ³ /hr)
Rotation — hydraulic	360°		360°	
Outriggers				
Net reach beyond outriggers —				
at 0°	120' 9"	(36.81m)	96'	(29.30m)
at 29°	105'	(31.99m)	78' 8"	(24.00m)
Outrigger spread L - R — front	28' 1"	(8.56m)	28' 1"	(8.56m)
hydraulically swing out and extend down				
Outrigger spread L - R — rear	26' 6"	(8.10m)	26' 6"	(8.10m)
hydraulically telescope out and extend down				
Engine Specifications – Self-Contained				
Model	Deutz		Deutz	
EU stage/EPA	3A/Tier 3		3A/Tier 3	
Cylinder	6		6	
Fuel	Diesel		Diesel	
Displacement	6.6 liter		6.6 liter	
Power	208 HP	(155kW)	208 HP	(155kW)
Transport Axle Weights*				
Steer 1-axle	11,219 lbs	(5,089kg)	11,219 lbs	(5,089kg)
Drive 2-axles	24,885 lbs	(11,288kg)	24,885 lbs	(11,288kg)
Trailer 3-axles	49,833 lbs	(22,605kg)	49,833 lbs	(22,605kg)
Total (approx.)	85,937 lbs	(38,982kg)	85,937 lbs	(38,982kg)

Maximum theoretical values listed.

* Truck dimensions will vary with different truck makes, models and specifications.

Weights are approximate and include conveyor truck, full hydraulic oil, fuel, water and driver. All specifications apply to units mounted on Mack CXU613 Pinnacle.

Putzmeister

Putzmeister America, Inc. Telephone (262) 886-3200
 1733 90th Street (800) 884-7210
 Sturtevant, WI 53177 USA Facsimile (262) 884-6338
 Telebelt@putzam.com
 www.putzmeister.com



Authorized Distributor