

Maggio 2013

**I COLORI STAMPATI SI RIFERISCONO AI FONDI PRIVI DI FINITURA E SONO PURAMENTE INDICATIVI**

***The printed samples are referring to the used bases and are just an indication of the colour range***

I colori riportati in questo catalogo sono da ritenersi puramente indicativi e non rappresentano vincolo contrattuale. Si invita a richiedere sempre un campione all' ufficio commerciale  
The shades printed in this catalog are just a colour reference indication; we suggest you to ask an actual sample to our Sales Office

**fiscatech** si riserva di apportare tutte le variazioni che ritiene opportune ai prodotti ed alle finizioni inserite in questa campionatura. Viste le caratteristiche tecniche del prodotto, il riferimento colore è indicativo e potrà subire lievi variazioni. Solo il campione specifico sull'ordine farà fede quale colore definitivo. L'articolo per le sue caratteristiche può presentare differenze di tonalità. Data la particolare lavorazione del materiale, non è possibile garantire la perfetta uniformità del colore tra le diverse partite. Si consiglia pertanto alla clientela di non mescolare, durante la produzione, pezzi appartenenti a lotti diversi. Si consiglia di non mettere a contatto tonalità differenti, onde evitare trasferimenti di colore. Salvo il disponibile, è richiesto un minimo di produzione.

**fiscatech** reserves the right to make any variations which it considers opportune to the products and finishings contained in this set of samples. In consideration of the technical characteristics of the product, the colour reference is indicative and may be subject to slight variations. Only the specific sample on the order is binding with regard to the definitive colour. The final shades could be slightly different. Due to the peculiar manufacturing process of these materials it is not possible to guarantee a perfect colour uniformity for different product shots. We consequently recommend to the customers not to mix during production rolls belonging to different lots. We suggest to don't put different tonalities in contact, to avoid colour transfer. A minimum quantity is required unless the colour is already in stock.

# AGENDA WINNER

\* A MINIMUM QUANTITY IS REQUIRED UNLESS THE COLOUR IS ALREADY IN STOCK



Q72\*



T84



T85



L33\*



U86



Q07



K92



L66\*



L34



T86



Z86\*



325



317



U63\*



Q92



055

# AGENDA WINNER

\* A MINIMUM QUANTITY IS REQUIRED UNLESS THE COLOUR IS ALREADY IN STOCK



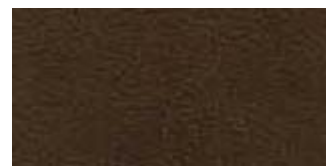
U66\*



859



P19



L96



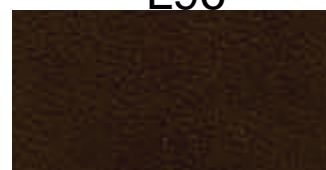
106



L59



K93



V92



K91



U28



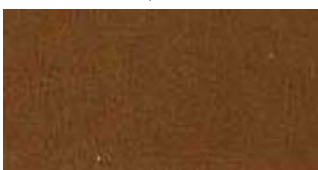
026



Q54



005



028



Q55



883



113

# AGENDA WINNER

\* A MINIMUM QUANTITY IS REQUIRED UNLESS THE COLOUR IS ALREADY IN STOCK



112



V93\*



Q10



008



L32



V89\*



308



Q57



L16



122



V91



174



L94\*



884



S75



U73



J32



Q91



Q76



L15



003



U78

# AGENDA WINNER

\* A MINIMUM QUANTITY IS REQUIRED UNLESS THE COLOUR IS ALREADY IN STOCK



L30\*



L31



Q80



U03



716



Q62



328



T52



U02



K51



T21



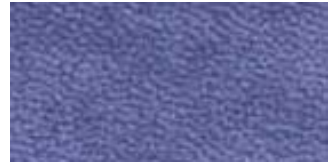
312



R37



315



L07\*



V90



T57



Q63



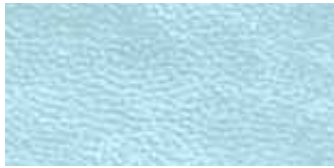
Q09



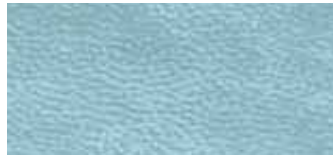
L58

# AGENDA WINNER

\* A MINIMUM QUANTITY IS REQUIRED UNLESS THE COLOUR IS ALREADY IN STOCK



314



715



Q77



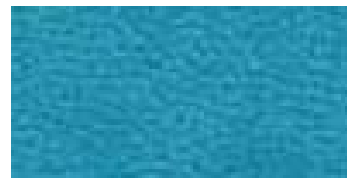
726\*



327



Q11



S47



U01



K71



K86



189



T55



339



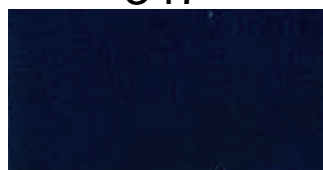
347



R58



Q98



Q95



L95



331



027



851



018



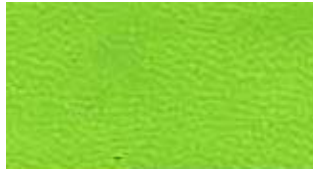
060

**AGENDA WINNER**

\* A MINIMUM QUANTITY IS REQUIRED UNLESS THE COLOUR IS ALREADY IN STOCK



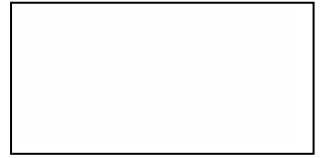
316



Q66



V67



Bco



L29\*



L62\*



J20



P93



T53



321



871



187



T56\*



L41



V94\*



019



Q53



313



031



007



T19



150



Nro



004