

### Input data

System of measurement		Metric
Input type		Gear motor
Input speed	[rpm]	1400
Output speed	[rpm]	154.19
Ratio (i=)		9.08
Frequency	[Hz]	50
Input options		IEC
Requested input power	[kW]	2.2
Service factor		6.8
Rated Power P1	[kW]	14.96

### Output data

**Gear unit** **M RN 42 B3 H1 9.08 100 B5 AC 50 MT 2.2 kW 100 A4 B5 X3**

Type		RN - Parallel shaft reducers
Input type		M
Size		42
Ratio (i=)		9.08
Input flange		B5
Mounting position		H1
Input speed	[rpm]	1400
Output speed	[rpm]	154.19
Rated output torque	[Nm]	130.81
Service Factor		6.8
Efficiency		0.96
Inertia moment	[kgm <sup>2</sup> ]	9.2579

#### Gear unit configuration

Output shaft		Hollow output shaft
Fixing		Feet

#### Output radial and axial loads

Output radial load	[N]	5660
Output axial load	[N]	1132

#### Accessories

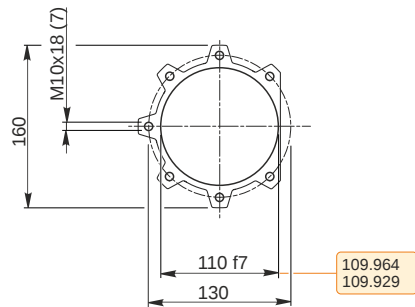
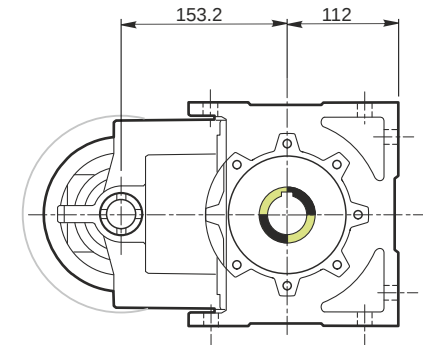
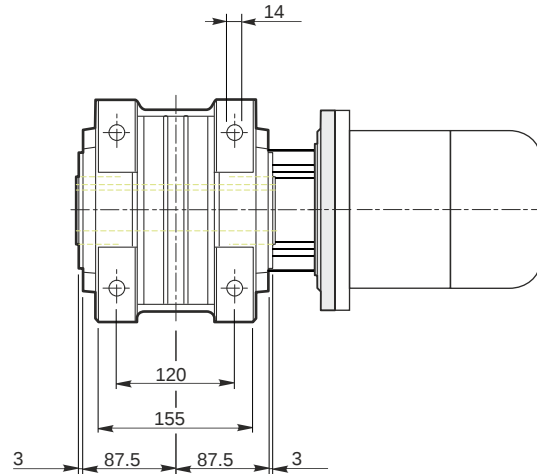
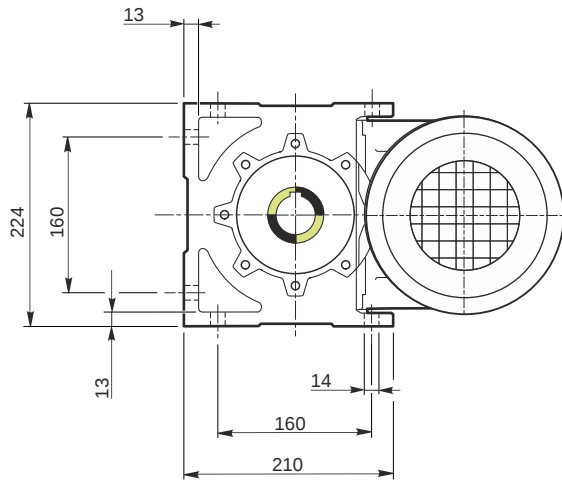
Hollow output shaft		AC 50
---------------------	--	-------

#### Electric motor

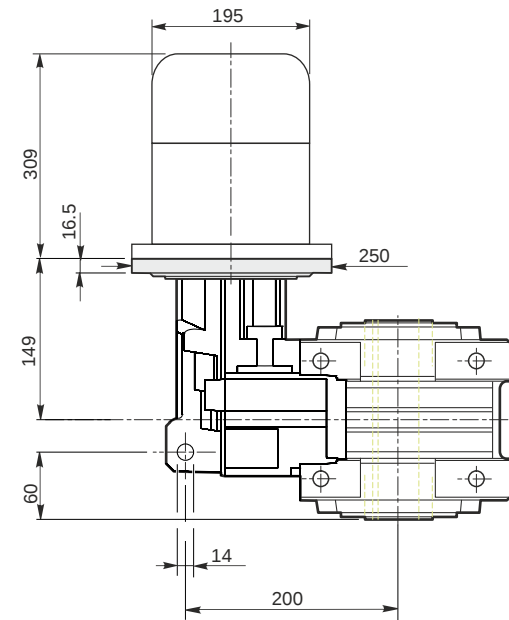
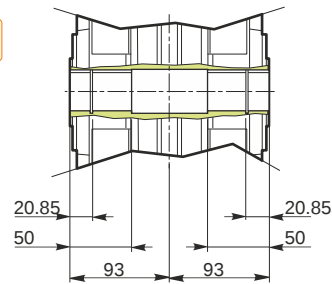
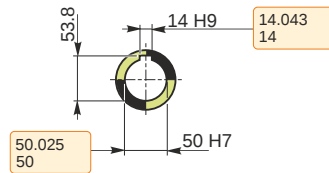
Size		100 A4
Poles		4
Power	[kW]	2.2

#### Electric motor configuration

Motor flange		B5
Terminal box position		X3

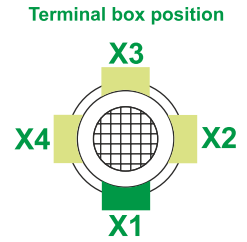
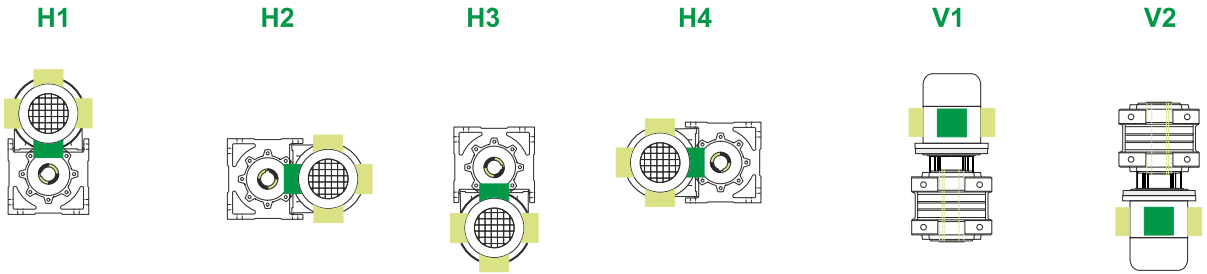


**Hollow output shaft AC**



**M RN 42 B3 H1 9.08 100 B5 AC 50 MT 2.2 kW 100 A4 B5 X3**

**Mounting positions**

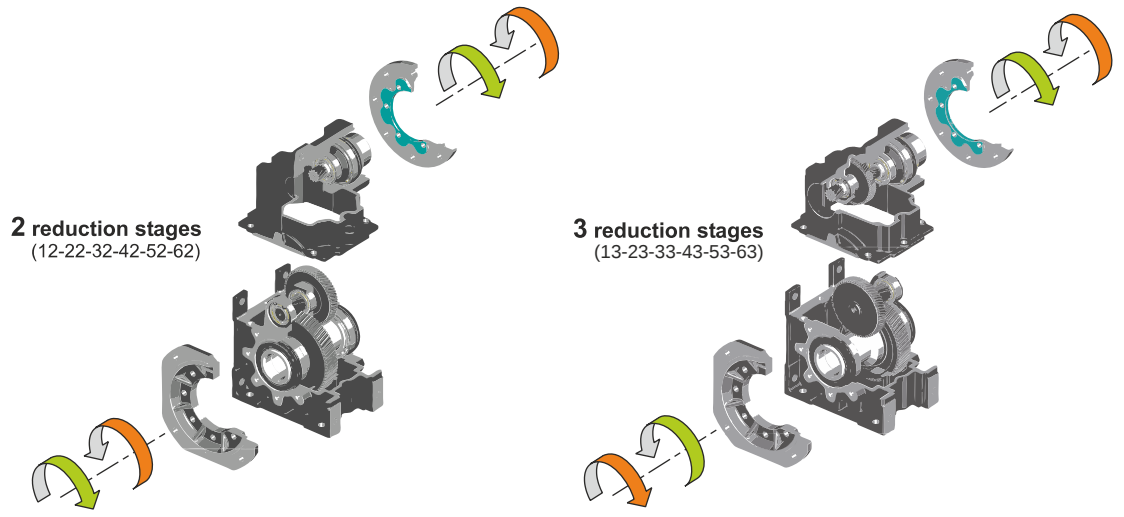


H1	H2	H3	H4	V1	V2
2.8	1.8	1.2	1.8	2.7	2.7



Lubricant type: Long life synthetic oil ISO VG320

**Direction of rotation**



**Weight**

Gear unit [kg]	33.5
Electric motor [kg]	21

**M RN 42 B3 H1 9.08 100 B5 AC 50 MT 2.2 kW 100 A4 B5 X3**