

Input data

System of measurement		Metric
Input type		Coupling for electric motor
Input speed	[rpm]	1400
Output speed	[rpm]	50
Ratio (i=)		28
Frequency	[Hz]	50
Input options		IEC
Requested input power	[kW]	0.37
Service factor		1
Rated Power P1	[kW]	0.37

Output data

Gear unit F RT 40 Output flange No Flange F 28 71 B14 AC 18

Type		RT - Worm speed reducers
Input type		F (Elastic coupling)
Size		40
Ratio (i=)		28
Input flange		B14
Input speed	[rpm]	1400
Output speed	[rpm]	50
Rated output torque	[Nm]	48.06
Service Factor		1
Efficiency		0.68
Inertia moment	[kgm ²]	0.000018

Gear unit configuration

Output shaft		Hollow output shaft
Fixing		Output flange
Right side flange		No Flange
Left side flange		F

Output radial and axial loads

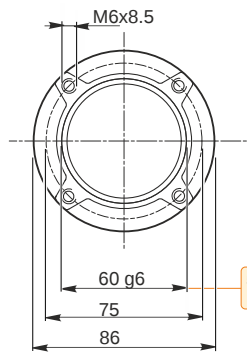
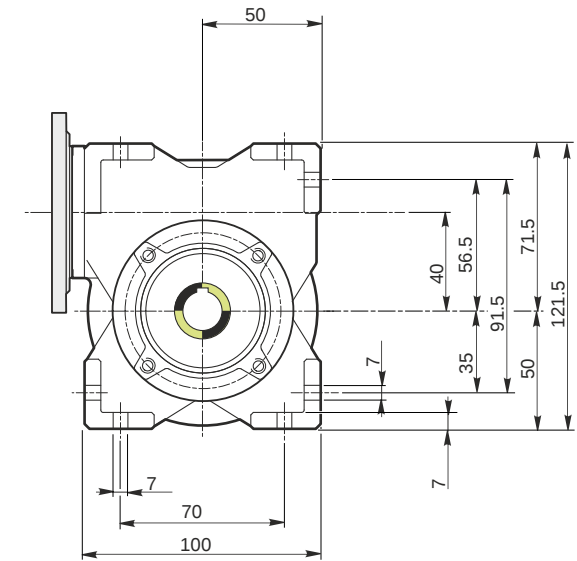
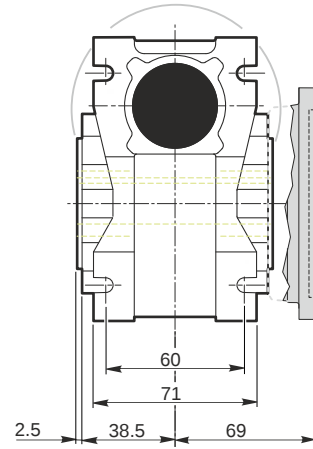
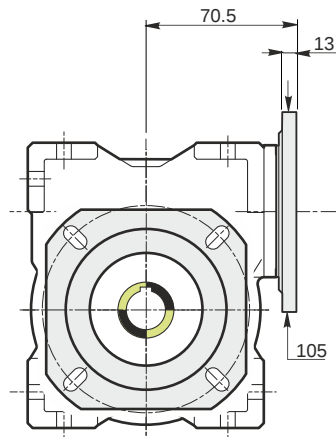
Ball bearings output radial load	[N]	1500
Taper bearings output radial load	[N]	2100
Ball bearings output axial load	[N]	300
Taper bearings output axial load	[N]	420

Accessories

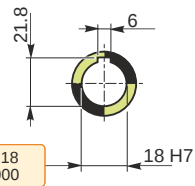
Hollow output shaft		AC 18
---------------------	--	-------

Electric motor coupling

Size		71 B4
Poles n.		4
Power	[kW]	0.37

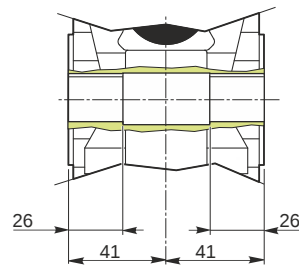


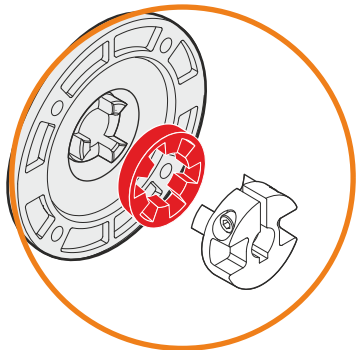
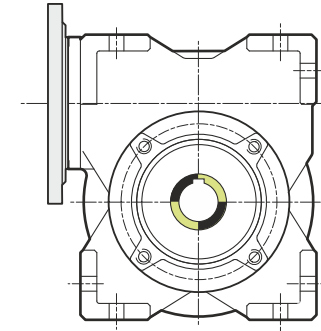
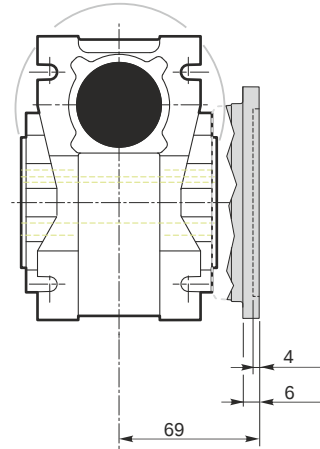
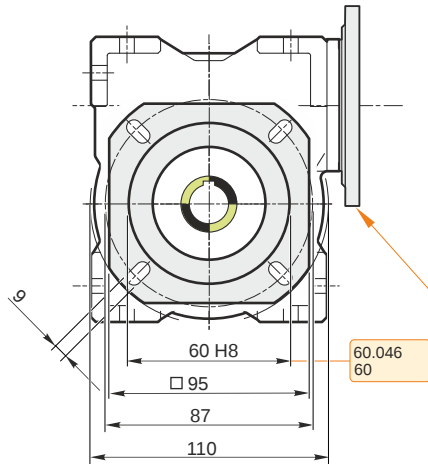
Hollow output shaft



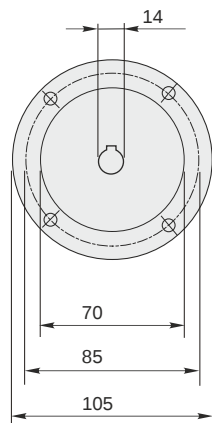
59.99
59.971

18.018
18.000





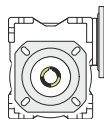
This gear unit is provided with an elastic coupling motor fitting



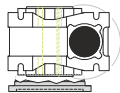
F RT 40 Output flange No Flange F 28 71 B14 AC 18

Mounting positions

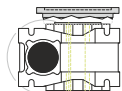
B3



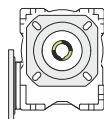
B6



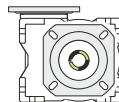
B7



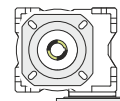
B8



V5



V6



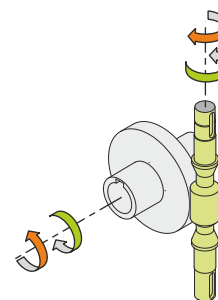
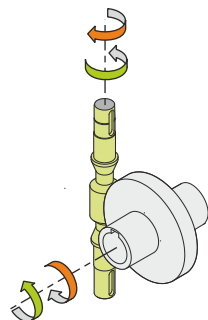
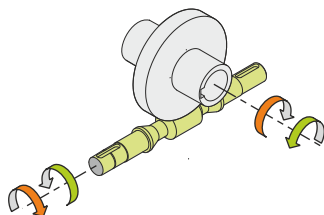
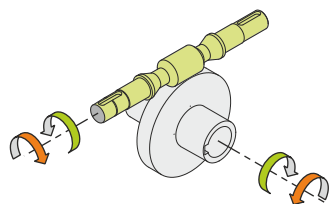
0.08



← Oil quantity [litres]

Lubricant type: Long life synthetic oil ISO VG320

Direction of rotation



Weight

Gear unit [kg] 2.5

Gearing data

Axial module	2.1
Number of starts	1
Lead angle	5° 39'
Pressure angle	20°

Backdriving

Static self-locking
Slow back-driving in case of vibrations
Low dynamic back-driving