

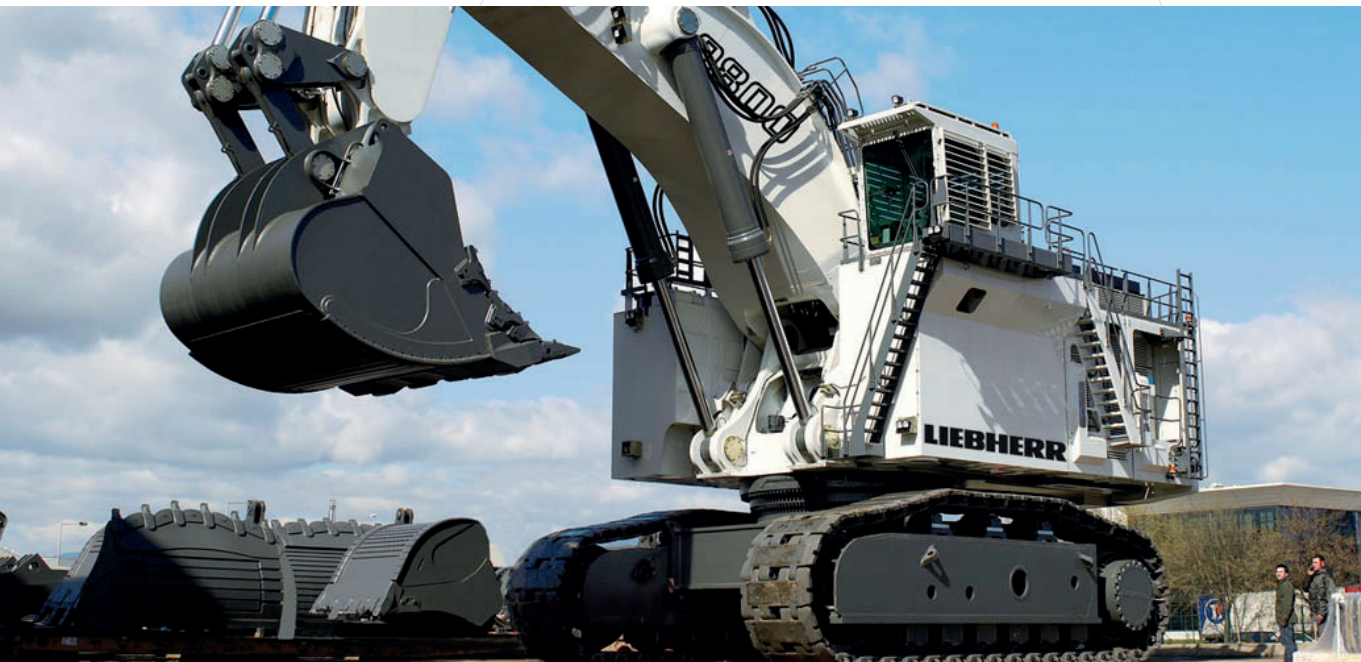
SMALLER  
DESIGN

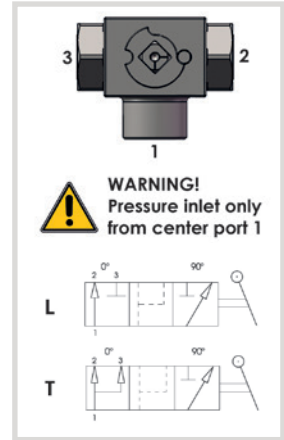
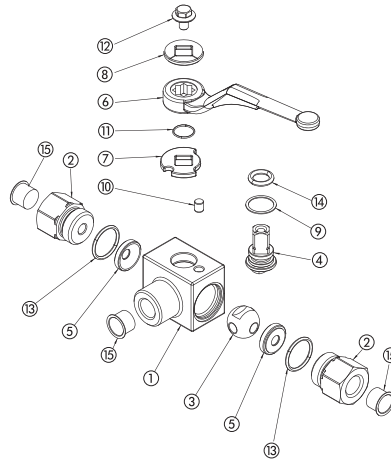
# GE5

## 3-WAY HIGH PRESSURE BALL VALVES

### CARBON STEEL

- Type: ball valve GE 3 way
- Body: block
- Ball seats: from DN6 up to DN13
- Operating pressure: 500 Bar  
depending on valve size and seal materials selected
- Temp range: -20°C to +100°C  
depending on seal material selected



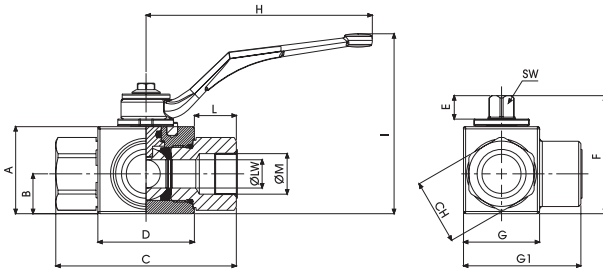


CARBON STEEL			
POS	DESCRIPTION	MATERIAL	Q.TY
1	Body	1,0737	1
2	Adapter	1,0737	2
3	Ball	1,0737	1
4	Stem	1,0737	1
5	Ball seat	POM	2
6	Handle	ZINC	1
7	Washer	1,0116	1
8	Washer	1,0116	1
9	Stem ring	POM	1
10	Spine	1,0737	1
11	Seeger	1,4301	1
12	Adapter o-ring	NBR	2
13	Stem o-ring	NBR	1
14	Screw	Din 6921 8.8	1
15	Caps	PVC	3

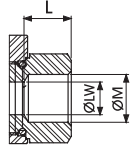
CARBON STEEL											
GE5		G <sup>3/8</sup>		DN10		1	1	1	1	A	B
TYPE AND WAY OF VALVE	GAS DIN/ ISO 228 BSP	NPT ANSI/ ASME B1.20.1	SAE J1926-1	NOMINAL DIMENSION	BODY MATERIAL	ADAPTER MATERIAL	STEM MATERIAL	BALL MATERIAL	BALL SEAT MATERIAL	ADAPTER AND STEM SEAL MATERIAL	
GE3	G 1/4	N 1/4	SAE4	DN6	1 1,0737	1 1,0737	1 1,0737	1 1,0737	A POM	B NBR	
3-way	G 3/8	N 3/8	SAE6	DN10			4 1,4404*	4 1,4404*			
	G 1/2	N 1/2	SAE8	DN13							

- \*On request:
- Reduced bore
  - Special threads
  - Pressure class up to PN50 MPa
  - Pneumatic and electrical actuator
  - Security block
  - Locking device

For further special requests please consult our technical/commercial service



**SMALLER  
DESIGN**



## GE5 DIN/ISO 228 BSP

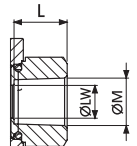
Standard

TYPE	PN	DN	A	B	C	D	E	F	G	G1	H	I	L	ØM	CH	SW	ØLW	KG	CARBON STEEL
																			ITEM CODE
GE5 G 1/4	50 MPa	6	33	14,3	69	39,4	11,1	47,25	26	42	110	87	14,8	G 1/4	22	9	6	0,411	GE5GGT15011A000
GE5 G 3/8	50 MPa	10	35	15	71	41,8	11,1	49,25	30	46	110	89	14,6	G 3/8	27	9	10	0,512	GE5GGT25011A000
GE5 G 1/2	50 MPa	13	40	18,3	83	44,4	11,1	54,25	35	54	110	94	19,8	G 1/2	30	9	13	0,72	GE5GGT35011A000

## GE5 ANSI/ASME B1.20.1 NPT

Standard

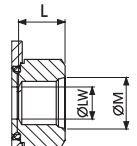
TYPE	PN	DN	A	B	C	D	E	F	G	G1	H	I	L	ØM	CH	SW	ØLW	KG	CARBON STEEL
																			ITEM CODE
GE5 N 1/4	50 MPa	6	33	14,3	69	39,4	11,1	47,25	26	42	110	87	14,8	N 1/4	22	9	6	0,411	GE5NNT15011A000
GE5 N 3/8	50 MPa	10	35	15	71	41,8	11,1	49,25	30	46	110	89	14,6	N 3/8	27	9	10	0,512	GE5NNT25011A000
GE5 N 1/2	50 MPa	13	40	18,3	83	44,4	11,1	54,25	35	54	110	94	19,8	N 1/2	30	9	13	0,72	GE5NNT35011A000

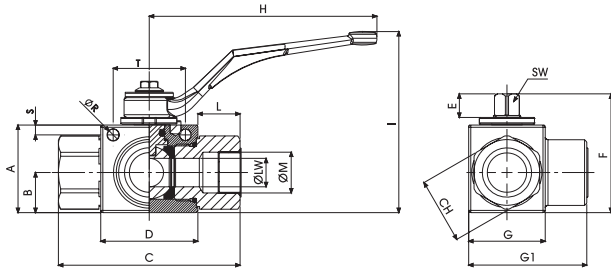


## GE5 SAE J1926-1

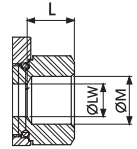
Standard

TYPE	PN	DN	A	B	C	D	E	F	G	G1	H	I	L	ØM	CH	SW	ØLW	KG	CARBON STEEL
																			ITEM CODE
GE5 SAE4	50 MPa	6	33	14,3	69	39,4	11,1	47,25	26	42	110	87	14,8	7/16 UNF	22	9	6	0,411	GE5EEE05011A000
GE5 SAE6	50 MPa	10	35	15	71	41,8	11,1	49,25	30	46	110	89	14,6	9/16 UNF	27	9	10	0,512	GE5EEE15011A000
GE5 SAE8	50 MPa	13	40	18,3	83	44,4	11,1	54,25	35	54	110	94	19,8	3/4 UNF	30	9	13	0,72	GE5EEE25011A000





**SMALLER  
DESIGN**



### GE5 DIN/ISO 228 BSP

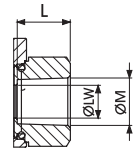
Fixing holes

																					CARBON STEEL	
TYPE	PN	DN	A	B	C	D	E	F	G	G1	H	I	L	ØM	CH	ØR	S	T	SW	ØLW	KG	ITEM CODE
GE5 G 1/4	50 MPa	6	33	14,3	69	39,4	11,1	47,25	26	42	110	87	14,8	G 1/4	22	5,10	4,5	33	9	6	0,411	GE5GGT15011AF10
GE5 G 3/8	50 MPa	10	35	15	71	41,8	11,1	49,25	30	46	110	89	14,6	G 3/8	27	5,25	4,5	33	9	10	0,512	GE5GGT25011AF10
GE5 G 1/2	50 MPa	13	40	18,3	83	44,4	10,8	54,30	35	54	110	94	19,8	G 1/2	30	5,25	4,5	33	9	13	0,72	GE5GGT35011AF10

### GE5 ANSI/ASME B1.20.1 NPT

Fixing holes

																					CARBON STEEL	
TYPE	PN	DN	A	B	C	D	E	F	G	G1	H	I	L	ØM	CH	ØR	S	T	SW	ØLW	KG	ITEM CODE
GE1 N 1/4	50 MPa	6	33	14,3	69	39,4	11,1	47,25	26	42	110	87	14,8	N 1/4	22	5,10	4,5	33	9	6	0,411	GE5NNT15011AF10
GE1 N 3/8	50 MPa	10	35	15	71	41,8	11,1	49,25	30	46	110	89	14,6	N 3/8	27	5,25	4,5	33	9	10	0,512	GE5NNT25011AF10
GE1 N 1/2	50 MPa	13	40	18,3	83	44,4	11,1	54,25	35	54	110	94	19,8	N 1/2	30	5,25	4,5	33	9	13	0,72	GE5NNT35011AF10



### GE5 SAE J1926-1

Fixing holes

																					CARBON STEEL	
TYPE	PN	DN	A	B	C	D	E	F	G	G1	H	I	L	ØM	CH	ØR	S	T	SW	ØLW	KG	ITEM CODE
GE5 SAE4	50 MPa	6	33	14,3	69	39,4	11,1	47,25	26	42	110	87	14,8	7/16 UNF	22	5,10	4,5	33	9	6	0,411	GE5EEE05011AF10
GE5 SAE6	50 MPa	10	35	15	71	41,8	10,8	49,30	30	46	104	78	14,6	9/16 UNF	27	5,25	4,5	33	9	10	0,512	GE5EEE15011AF10
GE5 SAE8	50 MPa	13	40	18,3	83	44,4	10,8	54,30	35	54	104	83	19,3	3/4 UNF	30	5,25	4,5	33	9	13	0,72	GE5EEE25011AF10

