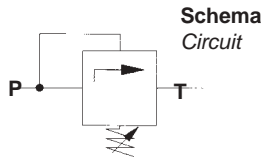
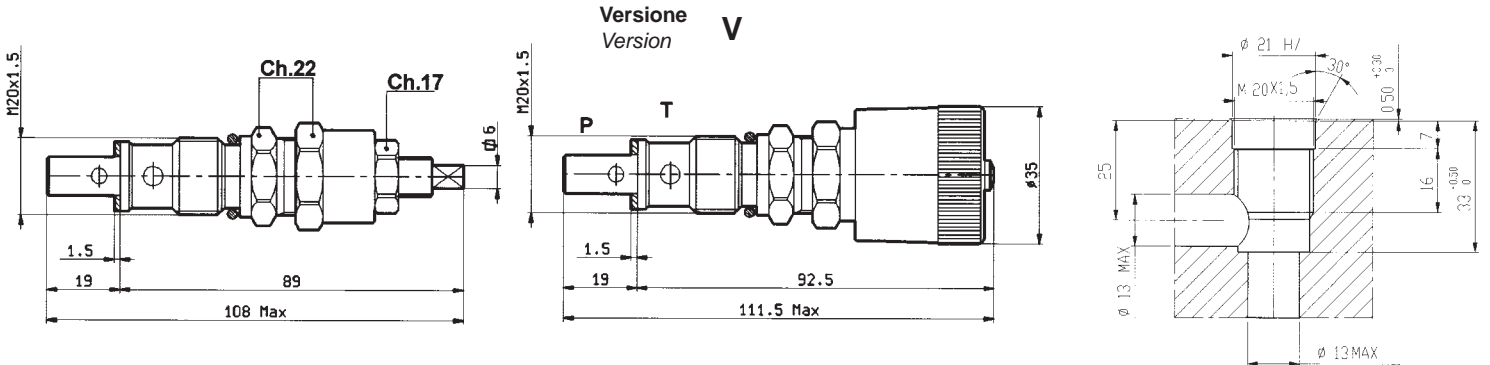


# SERIE LPC6 VALVOLA A CARTUCCIA - LPC6 SERIE- CARTRIDGE VALVE



Codice Code	Q max. lt/min.	P max. Bar	Attacchi Port size	CAVITA CAVITY
LPC 6	40	350	M20x1,5	n°11



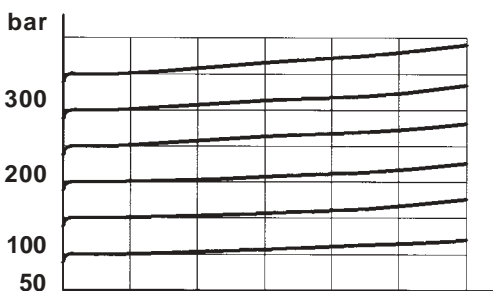
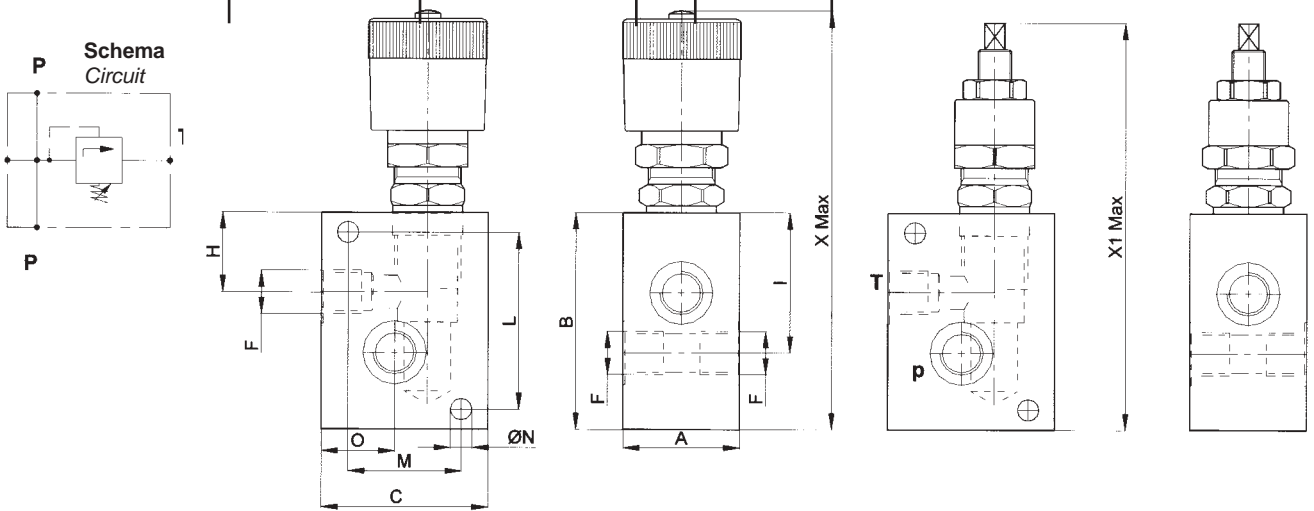
Codice ordinazione Order code	Peso Weight Kg.	Codice ordinazione Order code Versione V	Peso Weight Kg.	Campo di taratura Pressure range Bar	Coppia di serraggio Installation torque Nm
LPC6/50	0,156	LPC6V/50	0,206	5 > 50	46 > 51
LPC6/100		LPC6V/100		30 > 100	
LPC6/210		LPC6V/210		50 > 210	
LPC6/350		LPC6V/350		100 > 350	

Rondella rame,  
fornita su richiesta.  
Copper washer,  
on request

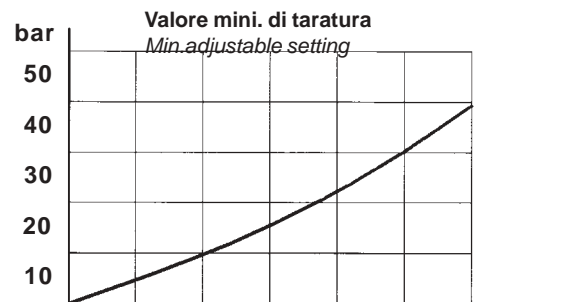
## VALVOLA IN LINEA - LINE MOUNTED VERSION

Codice Code	A m/m	C m/m	B m/m	Attacchi Port size							ØN m/m	X m/m	X1 m/m	Peso Weight Kg
				ØF BSPP	H m/m	I m/m	L m/m	M m/m	O m/m	ØN m/m				
LPC6.../C14	35	50	65	1/4"	24	48	53	34	22	6,5	126,5	123	0,407	
LPC6.../C38	35	50	65	3/8"	24	48	53	34	20	6,5	126,5	123	0,400	
LPC6.../C12	35	50	65	1/2"	24	48	53	34	18	6,5	126,5	123	0,381	

LPC6V.../C..  
Codice di ordinazione  
per versione a volantino  
Ordering code for  
version with wheel



Curve di apertura  
Opening curves  
Temp.olio 30°C-  
Viscosità 33 Cst/40°C



Valore mini. di taratura  
Min.adjustable setting