


# medical Imaging

 **MITSUBISHI  
ELECTRIC**  
MEDICAL IMAGING



- ◆ *color and monochrome printers*
- ◆ *medical video recorders*

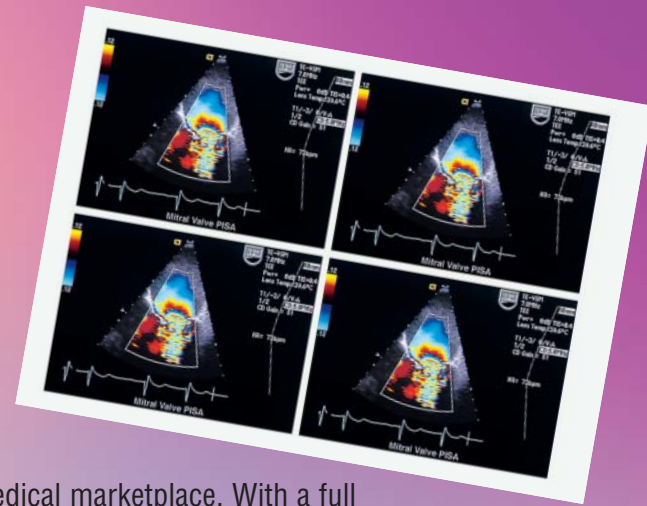


*With a full line of color, monochrome printers and medical video recorders, Mitsubishi offers the best possible solution for all your medical applications. Each Mitsubishi product provides the utmost in quality, performance and long-lasting reliability.*

*If It's Medical Imaging, It's Mitsubishi.*



# If It's Medical Imaging, It's Mitsubishi.



## High Quality, High Reliability

Mitsubishi Medical Imaging is a company dedicated to the image-critical medical marketplace. With a full line of color, monochrome printers and medical video recorders, Mitsubishi offers complete analog or digital solutions for every medical application. Each Mitsubishi printer provides superb performance and long lasting, jam-free reliability – all at a minimum operating cost. Mitsubishi's razor-sharp image quality results in enhanced diagnostic confidence.

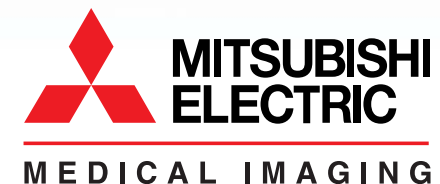
## Application Versatility

Mitsubishi's fully featured color, monochrome printers and medical video recorders deliver images with astonishing clarity and resolution. Ideally suited for a wide range of medical applications including ultrasound, endoscopy, fluoroscopy, or nuclear medicine, Mitsubishi medical products always deliver a superior value for your investment. There's a Mitsubishi printer or video recorder with the perfect combination of features for your specific medical application.



## Commitment to Customer Service and Support

Mitsubishi Medical Imaging is unequalled in its commitment to the medical marketplace with over two decades of manufacturing and technology leadership. Plus every Mitsubishi printer and video recorder is backed by a network of dedicated professionals and an outstanding service and support program. Mitsubishi medical products are made available to customers through a network of authorized dealers and distributors throughout the United States and Central and South America.





### P-93DW

#### A6 Digital, Roll-Type Monochrome Thermal Printer

- 325 dpi high density thermal head provides dot resolution up to 1280 x 5760
- Jam-free mechanism
- Compact, lightweight design
- Dual power voltage for world wide compatibility
- User-friendly controls conveniently located on front panel
- Variable print size is easily set and meets all hospital print size needs
- Supplementary prints are easily output; simply press the front panel copy button
- Many settings are easily checked; LED indicators provided for most settings
- USB 2.0 interface
- Low power consumption
- Superior print speed performance for all paper sizes
- Multi-regulatory safety and medical approved
- $\gamma$ -adjustment function supports a wide variety of applications
- UL2601-1 and CE medical approved

JAM-FREE  
RELIABILITY



### P-93W

#### A6 Analog, Roll-Type Monochrome Thermal Printer

- 325 dpi high density thermal head provides dot resolution up to 1280 x 1250
- Jam-free mechanism
- Compact, lightweight design
- Dual power voltage for world wide compatibility
- User-friendly controls conveniently located on front panel
- Prints multiple images on a single sheet; choose from six print sizes, including panorama size
- Supplementary prints are easily output; simply press the front panel copy button
- Many settings are easily checked; LED indicators provided for most settings
- 10 frame memory buffer-capture while printing
- 3.3 sec. print time
- Low power consumption
- Superior print speed performance for all paper sizes
- Multi-regulatory safety and medical approved
- $\gamma$ -adjustment function supports a wide variety of applications
- UL2601-1 and CE medical approved

JAM-FREE  
RELIABILITY



### P-500W

#### A5 Analog, Large-Format Monochrome Thermal Printer

- Dual power voltage
- 162 dpi thermal head provides dot resolution up to 1278 x 1000 for high resolution output
- Prints multiple images on a single sheet; choose from seven print sizes
- Auto-gain Control (AGC)
- Compact enclosure size
- User-friendly controls conveniently located on front panel
- One touch memory/print
- Continuous print mode (up to 10 images)
- Paper-saver function eliminates wasted space between prints
- Selectable underscan/overscan allows the P-500W to work with any ultrasound system or standard video
- Automatically switches to either composite NTSC or PAL format
- Multi-regulatory approved
- Wired remote control
- UL2601-1 and CE medical approved





### CP-700DU

#### A6 Digital, Roll-Type Dye Sublimation Color printer

- 260 dpi thermal head provides dot resolution up to 1340 x 1024
- Jam-free mechanism
- High speed printing, 25 seconds for S size; 39 seconds for L size
- Economical print capacity of 200 prints for S size, 130 prints for L size
- Compact unit size for easy integration into any environment
- Easy top-loading slide out mechanism
- UL544 approved

JAM-FREE  
RELIABILITY



### CP-750U

#### A6 Digital, Roll-Type Dye Sublimation Color Printer

- 260 dpi high density thermal head provides dot resolution up to 1024 x 768
- Auto-scanning function automatically locks on signals from 15-50 kHz
- Jam-free mechanism
- High speed printing, 25 seconds for S size; 39 seconds for L size
- Economical print capacity of 200 prints for S size, 130 prints for L size
- Compact unit size for easy integration into any environment
- Easy top-loading slide out mechanism
- UL544 approved

JAM-FREE  
RELIABILITY



### CP-770DW

#### A6 Digital, Roll-Type Dye Sublimation Color Printer

- 325 dpi thermal head provides dot resolution up to 1920 x 1344
- Jam-free mechanism
- High speed printing, 19 seconds for S size; 27 seconds for L size
- Economical print capacity of 200 prints for S size, 130 prints for L size
- Compact unit size for easy integration into any environment
- Easy top-loading slide out mechanism
- Parallel interface
- UL2601-1 and CE medical approved
- Optional SCSI card (SB-770)

JAM-FREE  
RELIABILITY





## CP-800DW

### A5 Digital, Roll-Type Dye Sublimation Color Printer

- 244 dpi thermal head provides dot resolution up to 1280 x 1768
- Jam-free mechanism
- Economical print capacity of 100 prints for S size, 60 prints for L size
- Paper roll and ink sheet cartridge are mounted from the top of the slide out mechanism for easy accessibility
- Compact unit size for easy integration into any environment
- SCSI-2 and Centronics interfaces (AT/ECP compatible)
- Standard Windows® 95/98 and Macintosh drivers with Photoshop plug-ins
- UL2601-1 medical approved

JAM-FREE  
RELIABILITY



## CP-800UM

### A5 Analog, Roll-Type Dye Sublimation Color Printer

- 222 dpi thermal head provides dot resolution up to 1024 x 1000
- Multi-image prints of 2, 4 or 6 per print
- RGB analog video, NTSC composite video, S-video, RS-232C port, front and rear remote jacks
- Jam-free mechanism
- Economical print capacity of 160 prints for S size, 100 prints for L size
- Paper roll and ink sheet cartridge are mounted from the top of the slide-out mechanism for easy accessibility
- Compact unit size
- Easy color setting
- Multiple image spooling while printing
- RGB interface
- 4 non-volatile memories save user presets
- CP-800E PAL version available
- UL2601-1 and CE medical approved

JAM-FREE  
RELIABILITY



## CP-900UM

### A6 Analog, Roll-Type Dye Sublimation Color Printer

- 325 dpi high-density thermal head provides dot resolution up to 1280 x 1200
- Jam-free mechanism
- Built-in Color Imaging Chips accurately control color characteristics and deliver consistent print quality, regardless of ink sheet
- Uses a sublimation thermal transfer method that smoothly produces 16.7 million colors, from full color to intermediate color
- New straight paper path that simplifies the paper feed mechanism results in extremely high speed – just 10 seconds for a 3" x 4" image picture
- Easy front top access
- Allows multi-printing of 2, 4 or 16 copies of the same screen or of different screens
- 4 frame memory
- Optimum functions for medical applications such as three types of  $\gamma$ -curve for compatibility with various types of medical equipment
- RGB interface
- Printer control through RS-232C interface
- CP-900E PAL version available
- UL2601-1 and CE medical approved

JAM-FREE  
RELIABILITY





## CP-900DW

### A6 Digital, Roll-Type Dye Sublimation Color Printer With USB1.1 Interface

- 325 dpi high-density thermal head provides dot resolution up to 1676 x 1280
- Jam-free mechanism
- Built-in Color Imaging Chips accurately control color characteristics and deliver consistent print quality, regardless of ink sheet
- Uses a sublimation thermal transfer method that smoothly produces 16.7 million colors, from full color to intermediate color
- New straight paper path that simplifies the paper feed mechanism results in extremely high speed – just 12 seconds for a 4.3" x 4.2" image picture
- Easy front top access
- Allows multi-printing of 2, 4 or 16 copies of the same screen or of different screens
- 8 frame memory
- Optimum functions for medical applications such as three types of  $\gamma$ -curve for compatibility with various types of medical equipment
- UL2601-1 and CE medical approved

JAM-FREE  
RELIABILITY



## CP-910U

### A6 Analog, Roll-Type Dye Sublimation Color Printer

- 325 dpi high-density thermal head provides dot resolution up to 1280 x 1200
- Jam-free mechanism
- Built-in Color Imaging Chips accurately control color characteristics and deliver consistent print quality, regardless of ink sheet
- Uses a sublimation thermal transfer method that smoothly produces 16.7 million colors
- New straight paper path that simplifies the paper feed mechanism results in extremely high speed—just 10 seconds for a 3" x 4" image picture
- Easy front top access
- Allows multi-printing of 2, 4 or 16 copies of the same screen or of different screens
- 8 MB frame memory
- Simple connection to videotape recorders using video cable
- Built-in paper catch
- UL1950/FCC Class A

JAM-FREE  
RELIABILITY



## CP-980DW

### A5 Digital, Roll-Type Dye Sublimation Color Printer With USB1.1 Interface

- 348 dpi high-density thermal head provides dot resolution up to 2132 x 1600
- Jam-free mechanism
- Uses a sublimation thermal transfer method that smoothly produces 16.7 million colors
- Economical print capacity of 160 prints for S size, 100 prints for L size
- Easy front top access
- Large capacity, 16 MB frame memory
- Dual power voltage for worldwide compatibility
- UL2601-1 and CE medical approved

JAM-FREE  
RELIABILITY





### CP-2000DU

#### A/A4 Digital, Dye Sublimation Color Printer

- 325 dpi thermal head provides dot resolution up to 2560 x 2970
- Standard SCSI interface and high speed parallel port
- Specially formulated ink ribbons and calculated gamma curves produce vivid, high fidelity color output
- Standard 24 MB memory
- Easy front load mechanism
- LCD display shows transfer mode, print count, print mode or printer states
- A4 kit option produces approximately 8 x 10 image area (2560 x 3200 resolution)
- LCD and on-screen display
- UL544 approved for medical applications



### CP-2000UA

#### A/A4 Analog, Dye Sublimation Color Printer

- 325 dpi thermal head provides dot resolution up to 2560 x 2970 with 24 MB RAM
- Centronics parallel interface; SCSI-2 optional
- Analog RGB sync H/V composite sync., sep. or sync on green or composite monochrome on green input
- Auto-scanning for direct video (RGB) connectivity with almost all workstations and PC platforms; auto-scanning automatically locks onto signals from 15 - 85 kHz (horizontal) and 50 - 80 Hz (vertical)
- Specially formulated ink ribbons and calculated gamma curves produce vivid, high fidelity color output
- Compatible with all graphics standards RGB video (NTSC/PAL frame rates) and VGA through 1280 x 1024 in RGB analog
- Standard 6 MB memory upgradeable to 24 MB on the system board
- 1, 4, 6 frame, or 16 and 24 images can be printed on a single sheet
- Easy front load mechanism
- LCD and on-screen display
- 48 character comment printing
- Wired remote control
- UL544 approved for medical applications



### HS-MD3000

#### Medical Videocassette Recorder

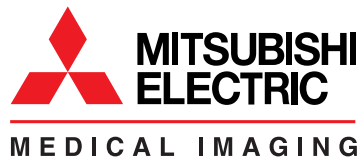
- 400 lines resolution on a standard VHS tape (S-VHS ET)
- Real time recording
- Advanced search features
- Faster response time
- Self diagnostic system
- Optional RS-232C/USB and 34-pin parallel interface board
- Ultra-easy, user-friendly operation
- Energy-efficient, lightweight and compact
- Larger and brighter LED front panel display
- Automatic head cleaning
- Automatic replay
- Variety of configurations and emulations available

# print media

## medical printer cross reference

SIZE DESCRIPTION	MEDIA PART NUMBER	PRINTS PER ROLL/BOX	P-93DW	P-93W	P-500W	CP-700DU	CP-750U	CP-770DW	CP-800DW	CP-800UM	CP-900DW	CP-900UM	CP-910U	CP-980DW	CP-2000DU	CP-2000UA
<b>A</b>																
Glossy color printer paper and ribbon (8.5 x 8")	CK2000S(U)	100/Box													■	■
Color printer paper and ribbon (8.5 x 11")	CK2000L(U)	100/Box													■	■
Monochrome printer paper and ribbon (8.5 x 11")	CK2000BL(U)	100/Box													■	■
Overcoat type printer paper and ribbon (8.5 x 11")	CK2000L4P(U)	50/Box													■	■
Transparency printer paper and ribbon (8.5 x 11")	CK2000TL(U)	100/Box													■	■
A4 Kit available															■	
<b>A5</b>																
Monochrome supergrade thermal paper	K70S	115			■											
Monochrome high density thermal paper (black tone)	KP75H-CE	-			■											
Monochrome high density thermal paper (bluish tone)	KP75HM-CE	-			■											
5" wide 4 panel paper roll and large ink ribbon pack	CK800FL4P	60							■	■						
5" wide 4 panel paper roll and small ink ribbon pack	CK800FS4P	100							■	■						
5" wide 3 panel paper roll and small ink ribbon pack	CK800S	160								■						
5" wide 3 panel paper roll and large ink ribbon pack	CK800L	100								■						
Color S-size paper and ink (5 x 4.7")	CK980S	160												■		
Color L-size paper and ink (7.6 x 5")	CK980L	100												■		
<b>A6</b>																
Monochrome high density thermal paper (bluish tone)	KP65HM	-	■	■		■			■							
Monochrome high density thermal paper (black tone)	KP65H	-	■	■		■			■							
Monochrome supergrade thermal paper	KP61S	-	■	■												
Monochrome high gloss thermal paper	KP91HG	-	■	■												
Roll paper use with PK700S/PK700L	CK700	-				■	■	■								
Ink ribbon (small) use with CK700	PK700S	200				■	■	■								
Ink ribbon (large) use with CK700	PK700L	130				■	■	■								
4 panel paper roll and small ink ribbon pack	CK700S4P	110				■	■	■								
4 panel paper roll and large ink ribbon pack	CK700L4P	75				■	■	■								
Standard/S size ink sheet (4.1 x 4.3")	CK900S	200									■	■	■			
Standard/L size ink sheet (4.3 x 6.2")	CK900L	130									■	■	■			
Surface coated paper/S size ink sheet (4.1 x 4.3")	CK900S4P	130									■	■	■			
Surface coated paper/L size ink sheet (4.3 x 6.2")	CK900L4P	90									■	■	■			

Print media subject to change without notice.



Mitsubishi Digital Electronics America, Inc.  
Imaging Products Division  
9351 Jeronimo Road  
Irvine, CA 92618  
888-307-0388  
ipdinfo@mdea.com  
www.mitsubishi-imaging.com

Technical Support:  
Toll Free: 888-307-0309  
Email: tsupport@mdea.com

Canada:  
Mitsubishi Electric Sales Canada Inc.  
Information Technologies Group  
Markham, Ontario  
905-475-7728  
www.MitsubishiElectric.ca



# print media

## discontinued medical printer cross reference

SIZE DESCRIPTION	MEDIA PART NUMBER	PRINTS PER ROLL/BOX	P-68U	P-90W	P-91DW	P-91W	CP-700UM	CP-700DSU	CP-710U
<b>A6</b>									
Monochrome high density thermal paper (bluish tone)	KP65HM	-	■	■	■	■	■	■*	
Monochrome high density thermal paper (black tone)	KP65H	-		■	■	■	■	■*	
Monochrome supergrade thermal paper	KP61S	-	■	■	■	■	■	■*	
Monochrome high gloss thermal paper	KP91HG	-			■				
Roll paper use with PK700S/PK700L	CK700	-					■	■	■
Ink ribbon (small) use with CK700	PK700S	200					■	■	■
Ink ribbon (large) use with CK700	PK700L	130					■	■	■
4 panel paper roll and small ink ribbon pack	CK700S4P	110					■	■	■
4 panel paper roll and large ink ribbon pack	CK700L4P	75					■	■	■
Small sticker paper roll and ink ribbon pack	CK700SC	200					■	■	■
Large sticker paper roll and ink ribbon pack	CK700LC	130					■	■	■
Small 16 pre-cut sticker paper roll and ink pack	CK710SPC	200					■	■	■
Large 16 pre-cut sticker paper roll and ink pack	CK710LPC	130					■	■	■
4 pre-cut sticker paper roll and ink pack	CK714SPC	200					■	■	■
Combo size pre-cut sticker paper roll and ink pack	CK71VSPC	200						■	■

Print media subject to change without notice. \*CP-700DSU starting at s/n 100641 supports monochrome thermal media with Windows drivers.



Mitsubishi Digital Electronics America, Inc.  
Imaging Products Division  
9351 Jeronimo Road  
Irvine, CA 92618  
888-307-0388  
ipdinfo@mdea.com  
www.mitsubishi-imaging.com

Technical Support:  
Toll Free: 888-307-0309  
Email: tsupport@mdea.com

Canada:  
Mitsubishi Electric Sales Canada Inc.  
Information Technologies Group  
Markham, Ontario  
905-475-7728  
www.MitsubishiElectric.ca