

TYRE CHANGER INSTRUCTION MANUAL

INDEX	PAGE
1. Introduction: -----	1
2. Safety regulation:-----	1
3. Warning label and sticking position:-----	1
4. Technical data: -----	1
5. Transport: -----	1
6. Unpacking: -----	1
7. Workplace requirements: -----	2
8. Product diagram -----	2
9. Assembly procedure:-----	3
10. Pneumatic link up-----	3
11. Electric link up: -----	3
12. Control devices-----	4
13. To perform preliminary operation tests: -----	4
14. Operation instruction -----	4
14.1. To loosen the tyre bead:-----	4
14.2. Clamping the tyre: -----	4
14.3. Demounting the tyre:-----	5
14.4. Mounting the tyre:-----	5
14.4.1 Checking tyre and wheel rim-----	5
14.4.2 Mounting the tyre -----	5
14.5. Inflating the tyre -----	6
14.5.1 Inflation without tubeless tyre inflation device -----	6
14.5.2 Inflation with tubeless tyre inflation device-----	6
15. Storing: -----	7
16. Maintenance: -----	7
17. Trouble shooting table:-----	9
18. Exploded drawing-----	10
19. Spare part list -----	19
20. Pneumatic drawing -----	27
21. Circuit diagram-----	27

Tyre Changer

Warning

This instruction is important for the machine, read carefully before installation and use, also it is important for safe use and maintenance of machine. Please keep this manual kindly in order to use and repair it further.

1. Introduction:

Application Range: The automatic tyre changer is especially designed for demounting / mounting tyres.

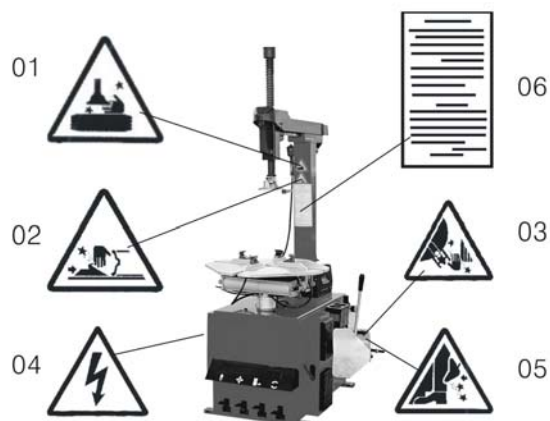
Caution: Use only for purpose for which it is designed, don't use it for other purposes. Manufacturer shall not be liable for any damage or injury caused by failure to comply with these regulations.

2. Safety regulation:

Use of this machine is especially reserved to trained and qualified professional persons. Any changes on this machine without manufacturer's permission may cause the malfunction and damage to machine, manufacturer can cancel warranty coverage for above. If some parts are damaged due to some reason, please replace them according to the spare parts list. (Attention: deadline of warranty is one year after sale).

3. Warning label and sticking position:

- 01 Don't put hands under the mounting head during operation;
- 02 Don't put hands between the jaws during operation;
- 03 Don't put hands in the tyre bead when demounting;
- 04 Make sure the system is equipped with a good grounding circuit;
- 05 Don't put feet between the bead breaking arm and the body during operation;
- 06 Warning instructions;



4. Technical data:

External Locking Rim Dimensions	10 " -21 "
Internal Locking Rim Dimensions	12 " -24 " (Working Pressure is 8~10 bar.)
Max. Wheel Diameter	1040mm (41 ")
Max. Wheel Width	335mm (14 ")
Bead breaker force with 1 Mpa air pressure	2500kg
Max. Working Pressure	8-10bar
Power supply	110V (1ph)/ 220V (1ph)/ 380V (3ph)
Motor power	1.1KW (1.5Hp) / 0.75KW (1Hp)
Max. Rotating Torque (Turntable)	1078 Nm (110Kg.m)
Overall Dimension	96×76×103 cm
Noise Level	<75db

5. Transport:

When transporting the machine, it must be handled with a forklift truck with the forks. Positioned as show as in the Fig 1.

6. Unpacking:

Pull out the nail which is nailed on the plate with tip jaw, unpack the carton and plastic cover. Check to make sure all parts shown on the spare parts list are included. If any parts are missing or broken, please contact the manufacturer or dealer ASAP.

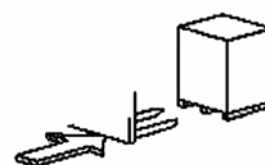


Fig 1

7. Workplace requirements:

Choose workplace in compliance with safety regulations. Connect power supply and air source according to manual, workplace must have good air condition; in order to make the machine run well, its workplace requires at least clear space from each wall shown as Fig 2. If installing it outdoor, it must be protected by roof against rain and sunshine.

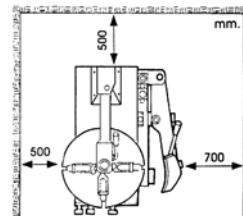


Fig 2

Warning: the machine with motor must not be operated in explosive atmosphere.

8. Product diagram

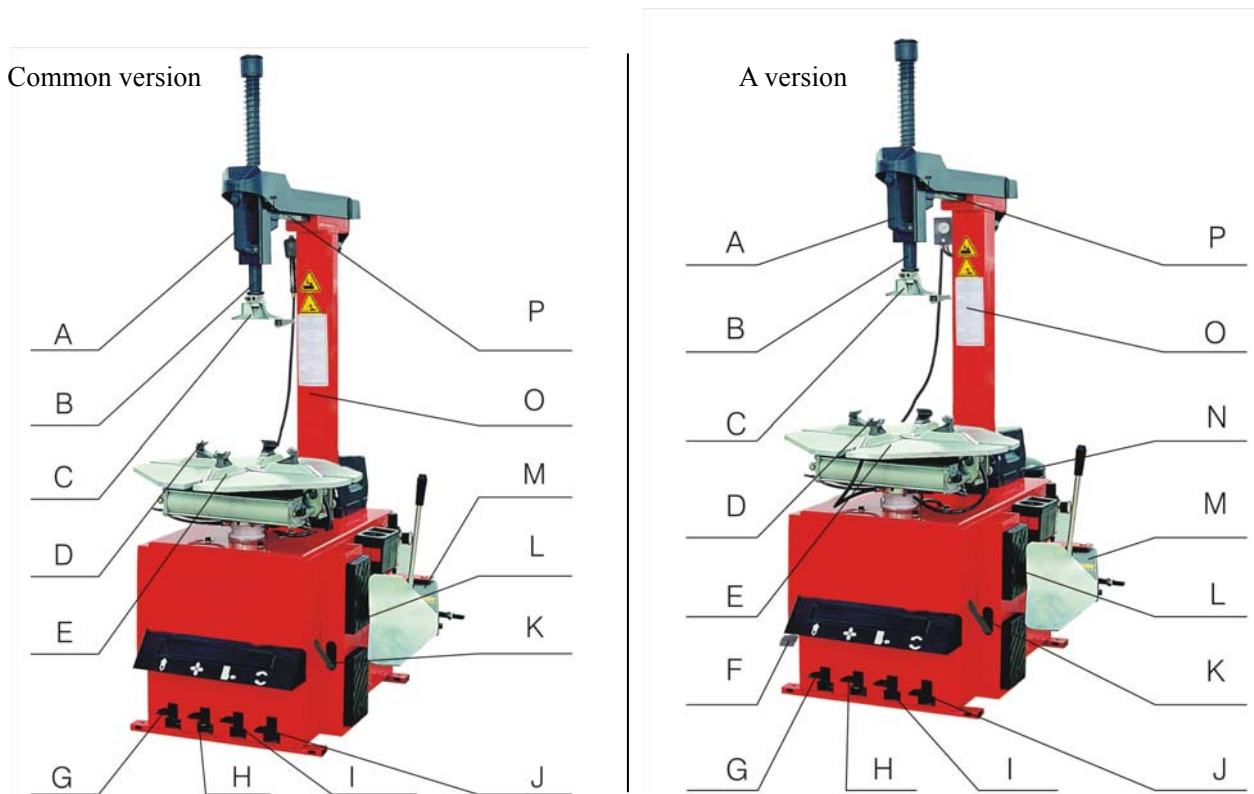


Fig 3

Common version

- A Locking handle bar
- B Vertical arm
- C Mounting head
- D Jaw
- E Turntable
- G Tilting pedal
- H Jaw Clamping pedal

- I Bead breaker pedal
- J Reverse pedal
- K Lifting lever
- L Rubber buffer
- M Bead breaker arm
- O Column
- P Horizontal arm

A version

A	Locking handle bar	I	Bead breaker pedal
B	Vertical arm	J	Reverse pedal
C	Mounting head	K	Lifting lever
D	Jaw	L	Rubber buffer
E	Turntable	M	Bead breaker arm
F	Inflation pedal	N	Tank
G	Tilting pedal	O	Column
H	Jaw Clamping pedal	P	Horizontal arm

9. Assembly procedure:

- 1) Tools preparation
- 2) Place the column (1, Fig 4) on the body (9, Fig 4) with 4 bolts, push air hose (6, Fig 4) through the hole of the column. Tighten 4 self-locking nut.
- 3) Insert screw (13, Fig 4) into the hole of column and connect the pin (7, Fig 4) of the tilting cylinder, tighten it with self-locking nut (12, Fig 4).
- 4) Unscrew two screws (11, Fig 4) on the left cover (10, Fig 4) and remove the cover, connect air hose (8, Fig 4) from the column to 5-way valve union.
- 5) Fix the plastic cover (5, Fig 4) with two bolts (4, Fig 4).
- 6) Mount the plastic back cover (3, Fig 4) on the column with screw (2, Fig 4).

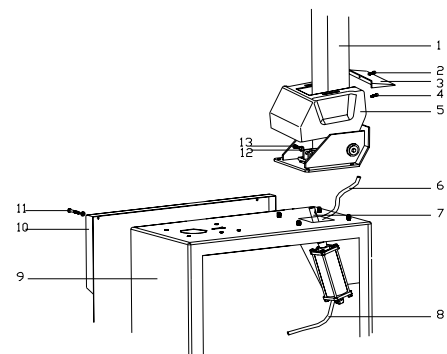


Fig 4

10. Pneumatic link up

Depress the pedal to ensure that the jaws on the turntable do not open unexpectedly to avoid injury caused by the accident.

- 2) Connect the inflation gun to its connector if it needs.
- 3) Connect tyre changer to compressed air network with air hose of inside diameter of 7-8 mm, air pressure of 8~10 bar is recommended.
- 4) Air pressure is not permitted to surpass 10 bar, otherwise, manufacturer can cancel the warranty coverage.

Caution: the pressure of compressed air network is not permitted to surpass 10 bar. Please install pressure-adjusting valve when it is more than 10 bar.

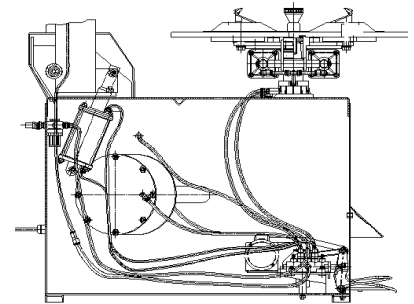


Fig 5

11. Electric link up:

Before making any electric link up, check to be sure that the main voltage corresponds to what is stamped on the voltage tag.

It is essential that the system is equipped with a good grounding circuit.

The machine must be connected to a power supply line circuit bracket set for 30A.

Caution: The rated power supply of tyre changer is given on rear panel, please check the voltage.

However minor, any operations on electrics must be done only by professional persons.

Manufacturer shall not be liable for any damage caused by failure to comply with the regulations.

Warning:

Keep hands and your body away from moving parts of tyre changer.

Do not wear necklace, bracelet or loose clothing.

Unreadable and missing labels must be replaced at once.

Don't use this machine if any warning labels missed.

Keep labels clear for operator.

12. Control devices

Control devices are shown as Fig 3 and included the following:

locking handle bar (A), used to lock or unlock vertical arm (B) and horizontal arm (P). Mounting head (C) can be raised about 2-3mm automatically if locking.

-tilting pedal (G), used to make column (O) tilt backwards.

-jaw clamping pedal (H), used to make four jaws (D) on the turntable open or close.

-bead breaker pedal (I), used to operate bead breaker arm (M).

-reverse pedal (J), used to make turntable (E) rotate in clockwise /anti-clockwise direction.

-inflation pedal (F) which only A-version equips it, used to inflating tubeless tyre.

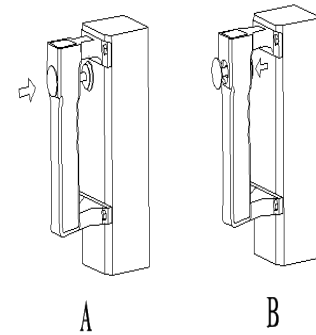


Fig 6

13. To perform preliminary operation tests:

Check whether the tyre changer runs well or not after connection finished:

1) Depress the reverse pedal down, the turntable should turn in a clockwise direction. Pull the pedal up and the turntable should turn anti-clockwise.

2) Pull the bead breaker arm with hands and depress the bead breaker pedal the bead breaker arm will close.

3) Depress the jaw clamping pedal completely to open the four jaws; depress it again, jaws are idle; repeat it again and again, the jaws should close.

4) Depress the tilting pedal, the column will tilt back to non-working position, repeat it once more, the column will be back to working position.

5) Press the button on the locking handle, horizontal arm and vertical arm will be locked in position.

Meanwhile, the mounting head is raised about 2-3mm automatically from the edge of wheel rim; repeat it once again, horizontal arm and vertical arm will be released.

6) Press the trigger on the air gauge to release air from the nozzle.

14. Operation instruction

Caution: Take off all the weights on both sides of wheel rim before operation.

14.1. To loosen the tyre bead:

Be careful when loosening tyre. Bead breaker arm will move rapidly with powerful force when depressing the bead breaker pedal, it may crash things in its working area.

Deflate the tyre completely, take off the core of valve stem;

2) Close the four jaws on the turntable to avoid conflict. If jaws open, it may scratch hands, so don't touch the bead when loosening.

3) Open the bead breaker arm by hands by pushing it towards the outside, place the tyre against the rubber buffer. Bring the paddle against the bead about 10mm from the edge of the rim shown as Fig 7.

Caution: Place the paddle against the tyre bead.

4) Depress Bead breaker pedal to push paddle into tyre. Repeat the above operations on different positions around the tyre and both sides of tyre until tyre is released completely.

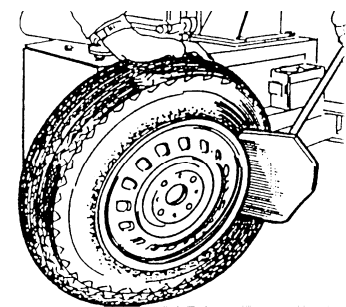


Fig 7

14.2. Clamping the tyre:

1) Remove all the weights on the wheel rim;

2) Lubricate the tyre bead;

3) Depress the tilting pedal, column will lean to non-working position.

4) Secure the wheel rim on the turntable from inside or outside.

Don't put your hands under the wheel while clamping the wheel rim.

Put the tyre on the center of the turntable.

Check to make sure the wheel firmly secured by the four jaws.

a- to clamp the wheel from outside (Tyre Diameter From 10" To 21"):

Depress the jaw clamping pedal halfway down to position the four jaws, put the tyre on turntable, depress the jaw clamping pedal until the wheel is secured by the jaws.

b- to clamp the wheel from inside (Tyre Diameter From 12 " To 24 "):

Depress the jaw clamping pedal to close the four jaws on the turntable. Put the tyre on the turntable and depress the jaw clamping pedal to open the jaws, thereby lock the wheel in place.

14.3. Demounting the tyre:

1) Pull the horizontal arm on the column to the working position.

Don't put your hands on the wheel rim to avoid injury during this operation.

2) Lower the vertical arm until the mounting head rests next to the wheel and on the top of tyre. Then lock the vertical arm in position using the locking handle bar. The mounting head can raise 2mm-3mm automatically from the edge of the wheel rim.

3) Insert the lifting lever between the tyre bead and the front section of the mounting head, and move the tyre above the mounting head shown as Fig 8.

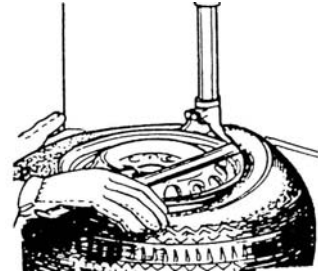


Fig 8

Note: In order not to damage the inner tube, it is recommended to perform this step with the inner tube valve stem positioned about 10 cm to the right of the mounting head.

With the lifting lever held in position shown as Fig 8, rotate the turntable in a clockwise direction by fully depressing the reverse pedal. Continue until the tyre is completely separated from the wheel rim.

To prevent accident, keep hands and other parts of your body away from moving devices during operation.

Note: The tyre can be slid out easily from the mounting head due to hardness. In order to prevent it, with the lifting lever held in position shown as Fig 8, rotate the turntable about 1~2 cm in anti-clockwise direction before rotating in clockwise direction.

4) Remove the inner tube if there is one.

5) Repeat the step 3 for the other side of the tyre.

6) Depress the tilting pedal to turn the column to the non-working position. Remove the tyre from the wheel rim.

14.4. Mounting the tyre:

14.4.1 Checking tyre and wheel rim

Caution: Check to make sure that the tyre and the wheel rim are of same size, it can prevent burst of the tyre during inflating and mounting.

Check as follows:

- No damage for tyre and tyre components, don't use it if some defects on the tyre appear.

- No convex and concave defects on the wheel rim.

Note: Especially for alloy wheel rim, it may have some micro inner cracks caused by concave defects, they bring in the danger to operators or the damage to the wheel rim.

The tyre and the wheel rim must be of the same size.

Note: The diameter of the wheel rim is stamped on itself, so is the tyre. If you are not sure, don't mount the tyre.

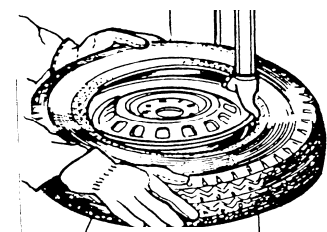


Fig 9

14.4.2 Mounting the tyre

1) Lubricate the tyre bead and the wheel rim with the lubrication recommended by manufacturer.

2) Clamp the wheel rim according to the section of "clamping the tyre" if the tyre is removed from the turntable.

3) Swing the swing arm on the column to the working position. Don't put your hands on the wheel rim to avoid injury during this operation.

4) Place the mounting head above the edge of the wheel rim with hands. Lock the vertical arm as described as

step 2 in the section of “dismounting the tyre”.

5) Move the tyre so that the bead passed below the front section of the mounting head and is brought up against the edge of the rear section of the mounting head.

Note: if the tyre doesn't have inner tube, make the valve stem and mounting head in the same line. Keep the tyre bead pressed down into the wheel rim channel with hands. Then, depress the pedal to rotate the turntable in clockwise direction. Continue this process throughout the entire circumference of the wheel rim and tyre.

To prevent accident, keep hands and other parts of your body away from moving devices.

6) Insert the inner tube if there is one.

7) Repeat the steps above for the other side of the tyre. Swing the swing arm to non-working position.

8) Depress the pedal, remove the tyre from the turntable.

Note: The turntable is always rotating clockwise during mounting or dismounting; anti-clockwise rotating is just for correcting operation.

14.5. Inflating the tyre

14.5.1 Inflation without tubeless tyre inflation device

Importance:

It is very dangerous during inflating operation, take carefully and comply with instruction.

A burst of the tyre can cause serious injury or even death to the operator.

There is a decompression valve which restricts pressure not to surpass 3.5bar on the tyre changer, but the possibility of burst still exists. Please don't underestimate the danger.

Tyre may burst caused by following:

- 1) The wheel rim and the tyre are not of the same size;
- 2) The tyre or the wheel rim is damaged;
- 3) The pressure of tyre inflation is over the max. Pressure recommended by manufacturer;
- 4) Fail to comply with the safety regulation;

Operate as follows:

- 1) Remove the valve cap from the valve stem;
- 2) Attach the air gauge nozzle to the tyre valve stem with the locking lever in the “UP” position. Check to make sure the nozzle is pressed down completely over the threads of the valve stem.
- 3) Check to make sure that the tyre and the wheel rim are of the same size;
- 4) Lubricate both the tyre bead and the wheel rim, additional lubrication is required if needed;
- 5) Inflate the tyre with break, while inflating, check the pressure listed on the pressure gauge, also check whether the bead is fixed or not. Repeat operation above until the bead is secured; you need take special steps when inflating convex rim or double convex rim;
- 6) Continue inflating and check the air pressure frequently. Once the proper air pressure has been reached, disconnect the nozzle from the valve stem and screw a valve cap onto the stem.

Note:

Never exceed the max. inflation pressure given by the tyre manufacturer.

Keep hands and your body away from inflating tyres.

Only specially trained persons are allowed to perform the operations, do not allow others to operate or be near the tyre changer.

14.5.2 Inflation with tubeless tyre inflation device

1) The tubeless tyre inflation device is used during bead-seating operation and during inflation in place of the airline gauge.

2) Disconnected from any power sources.

3) Before operating, it should be to check the device correctly:

-Press the inflating pedal, which is stretched out from the bottom of the left cover of the box assembly, down to the middle position (1 position Fig 11).the inflating head should give air.

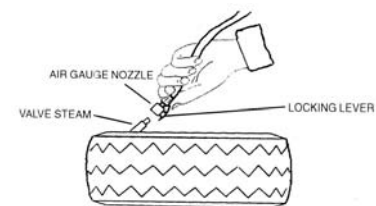


Fig 10

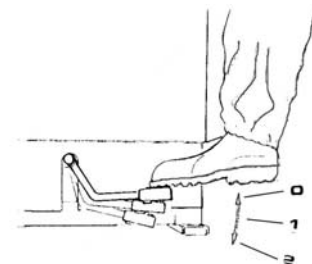


Fig 11

-Press the inflating pedal all the way down (2 position Fig 11).a strong air blast should come from the holes in the four locking sliders.

Bead seating and inflating note: a wheel can explode if:

- a. The diameter of the rim is not exactly the same at the tyre's.
- b. The rim or tyre is defective. NOTE: Before any installation work, check to make sure that the tyre changer is disconnected from any power sources.
- c. If the recommended pressure is exceeded during bead seating.
- d. The tyre is inflated to a pressure higher than the maximum recommended by the manufacturer.

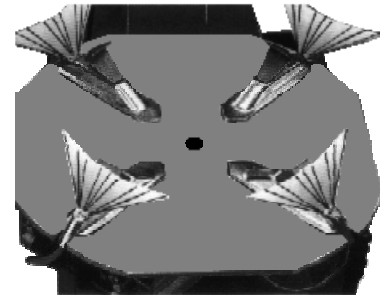


Fig 12

- e. The operator does not observe the requisite safety regulations.

4) Tube tyres

- a. Remove the valve stem.
- b. Clip the valve onto the inflator chuck , making sure it is properly connected.
- c. Make a last check to be certain that tyre and rim diameter correspond.
- d. Check to be certain that rim and beads are sufficiently lubricated.

If necessary lubricate some more.

- e. Press the pedal down to the middle position to start inflation.
- f. Release frequently the inflating pedal to check pressure on the manometer. Introduce more air little by little until the correct pressure is reached.

5) Tubeless tyres inflating

NOTE: When inflating tubeless tyre using a strong jet of air, the wheel must be clamped from the inside of the rim.

- a. Remove the valve stem.
- b. Clip the valve onto the inflator chuck making sure it is properly connected.
- c. Make a last check to be certain that tyre and rim diameter correspond.
- d. Check to be certain that rim and beads are sufficiently lubricated. If necessary lubricate some more.
- e. Press the pedal down to the middle position.
- f. If the bead of the tyre is not well seated, due to a strong bead, lift tyre manually until the upper bead seals against the rim, then press the pedal all the way down. A strong jet of air will be released through the nozzles in the slides and this will help the bead seal.

CAUTION: Always keep hands and body back from inflating tyre.

- g. Release the tyre , set the pedal back to the middle position and continue to inflate the tyre to the required pressure.

NOTE:

- 1) Failure to follow all warnings and instructions may lead to serious personal injury or death to operator or bystander. NEVER exceed 3.5 bar (50 psi) when seating beads or inflating tyres.

- 2) If a higher tyre inflation pressure is required, remove the wheel from the tyre changer and continue the inflation procedure with the wheel inside a special protection cage. NEVER exceed the maximum inflation pressure given by the tyre manufacturer.

- 3) Always keep hands and entire body back from inflating tyre.

- 4) Only specially trained persons are allowed to perform these operations. Do not allow others to operate or be near the tyre changer.

15. Storing:

If the machine needs to be stored for a long time, disconnect power supply and air source. Lubricate all parts what they need. Empty all the oil and water in the box. Put on the plastic cover to prevent dust.

16. Maintenance:

Caution: only the professional persons can do the maintenance.

To prolong the machine's life, maintain it timely according to the manual. Otherwise, it will impact the reliability of the machine or even cause injury to operator and others nearby.

Caution: before performing any maintenance, disconnect the tyre changer from the electric power supply and air source, and depress the bead breaker pedal for 3~4 times to evacuate all compressed air from the machine. Damaged parts must be replaced by professional persons with the spare parts provided by manufacturer.

Clean the machine once everyday after work. Clean the dirt on the turntable with diesel oil once per week and lubricate the slides and jaws.

Empty water in the air filter once every day to ensure the performance for the cylinder. Following maintenance must be done at least once per month: check oil level in oil fog maker, please top up with SAE30# oil if need, depress pedal for locked tyre 5-6 times. Check whether oil in oil fog maker was leakage, continued operation, depress twice every time, drop down a drip oil, otherwise adjust screw (E) that controlled oil enter with minus screwdriver.

Note: After the first 20 days of use, retighten the jaws with tightening screws B.

Note: in the event of a loss of power, check to see if the belt is tight. To do so, remove the left side of the cover by unscrewing the screws. Tighten the belt, using the adjusting screws located on the motor support.

Caution: please disconnect the machine from power supply and air source.

In order to achieve the reliability of jaws and bead breaker arm, operate as follows to keep their valves clean.

1. Remove the left side of the cover by unscrewing the two screws;
2. Loosen the valve silencers (A) which belong to jaw clamping pedal and bead breaker pedal;
3. Clean the silencers with compressed air please replace it referring to the spare parts list if it is damaged.

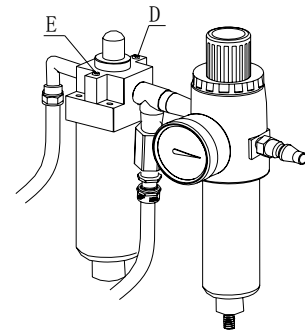


Fig 13

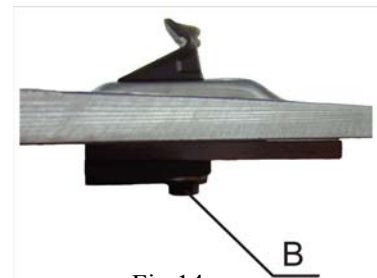


Fig 14

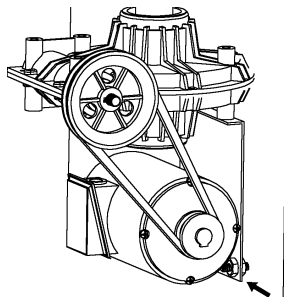


Fig 15

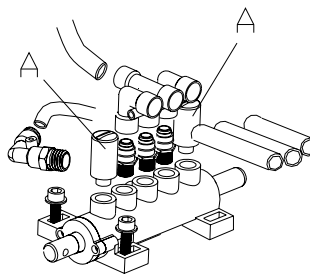
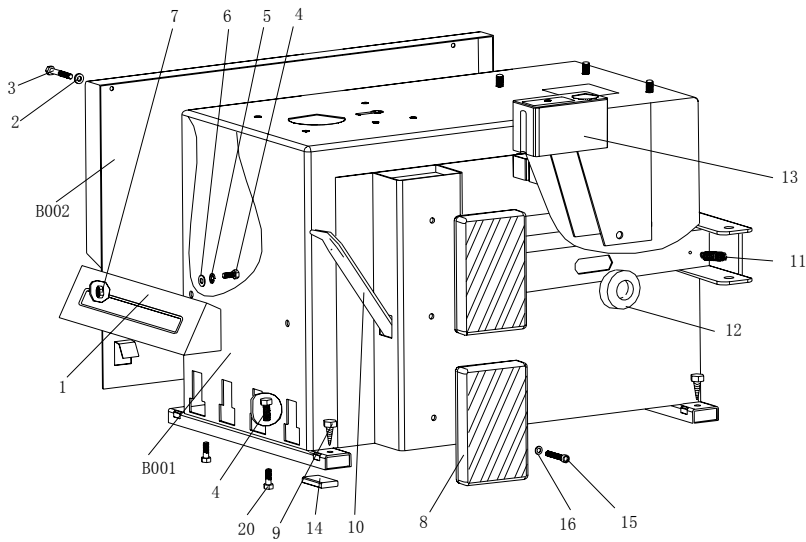
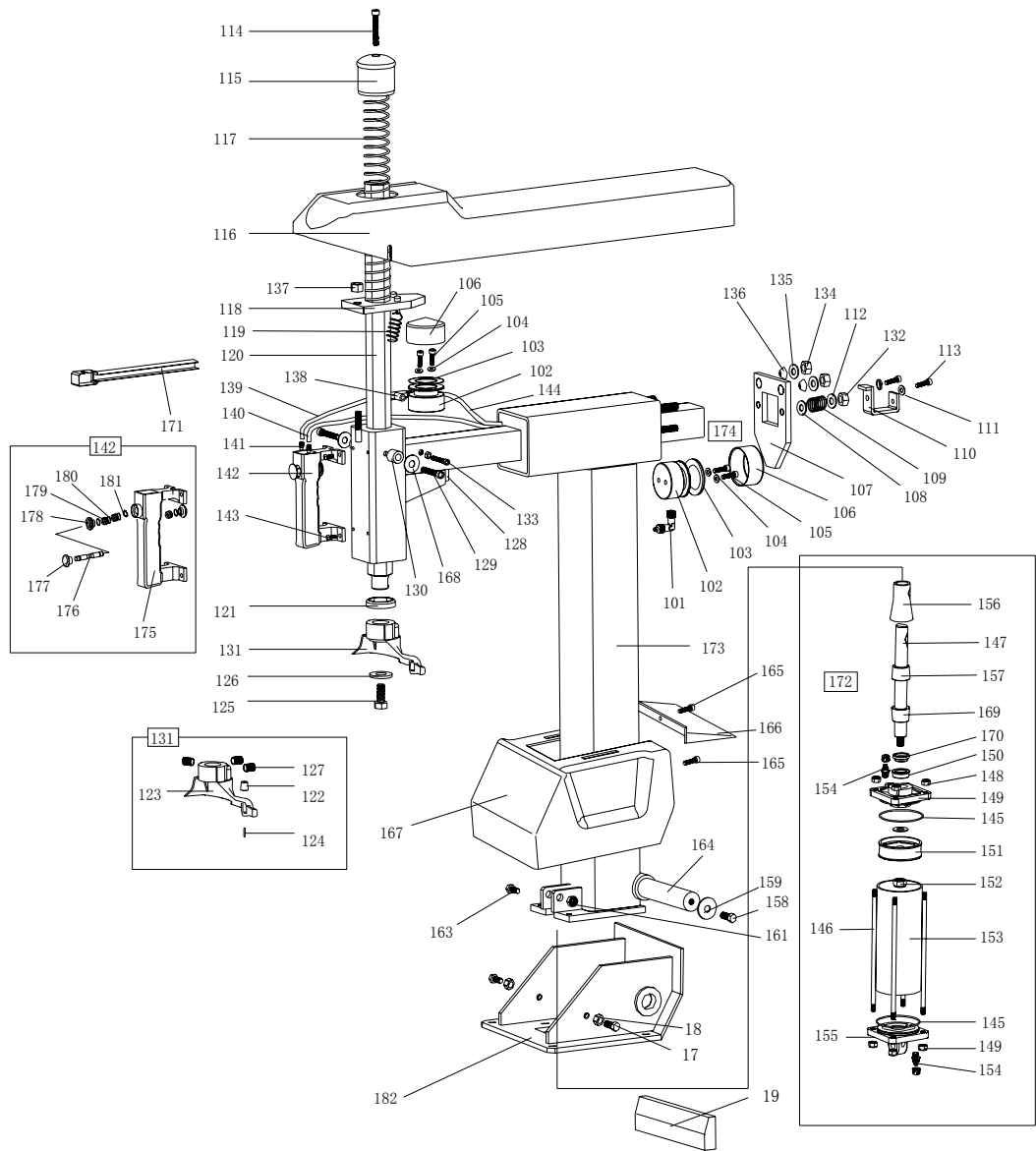


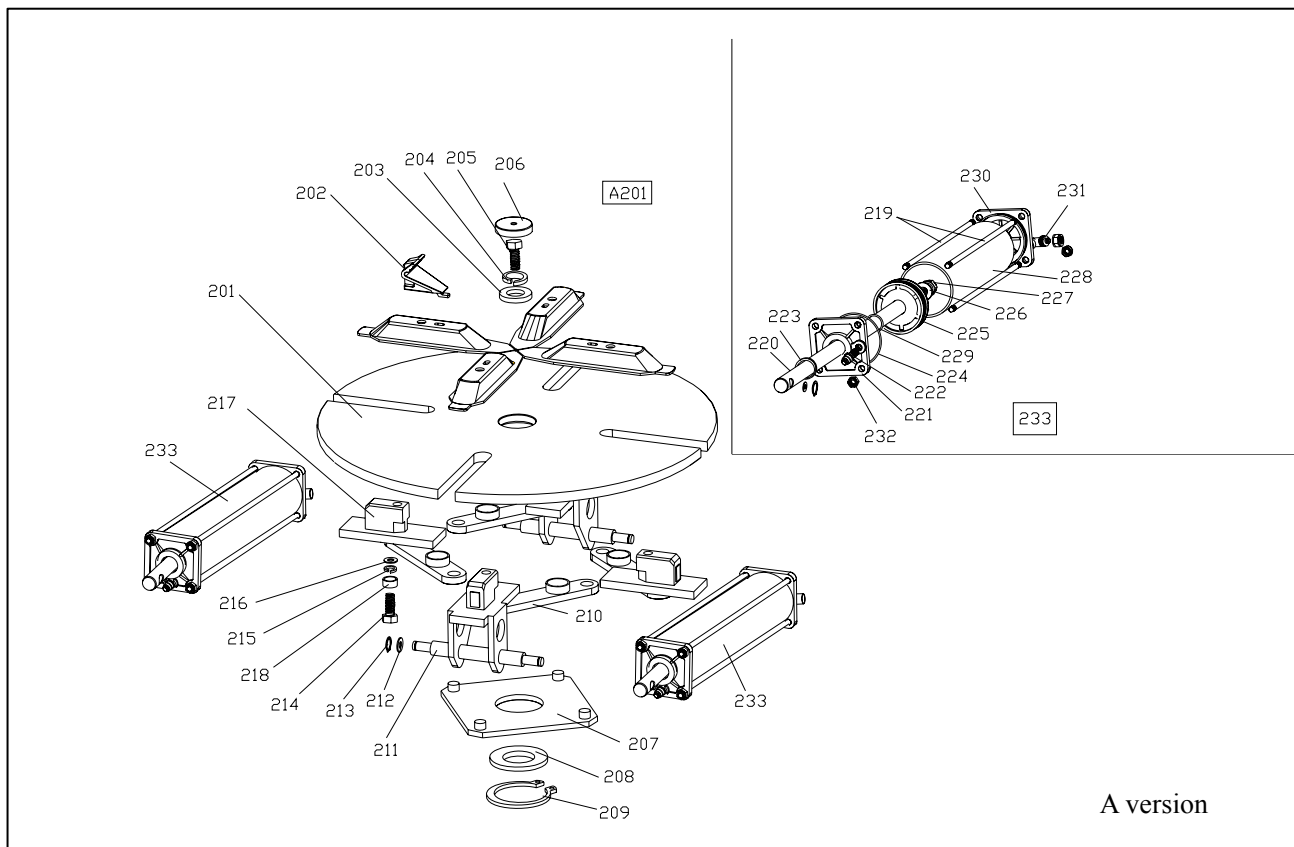
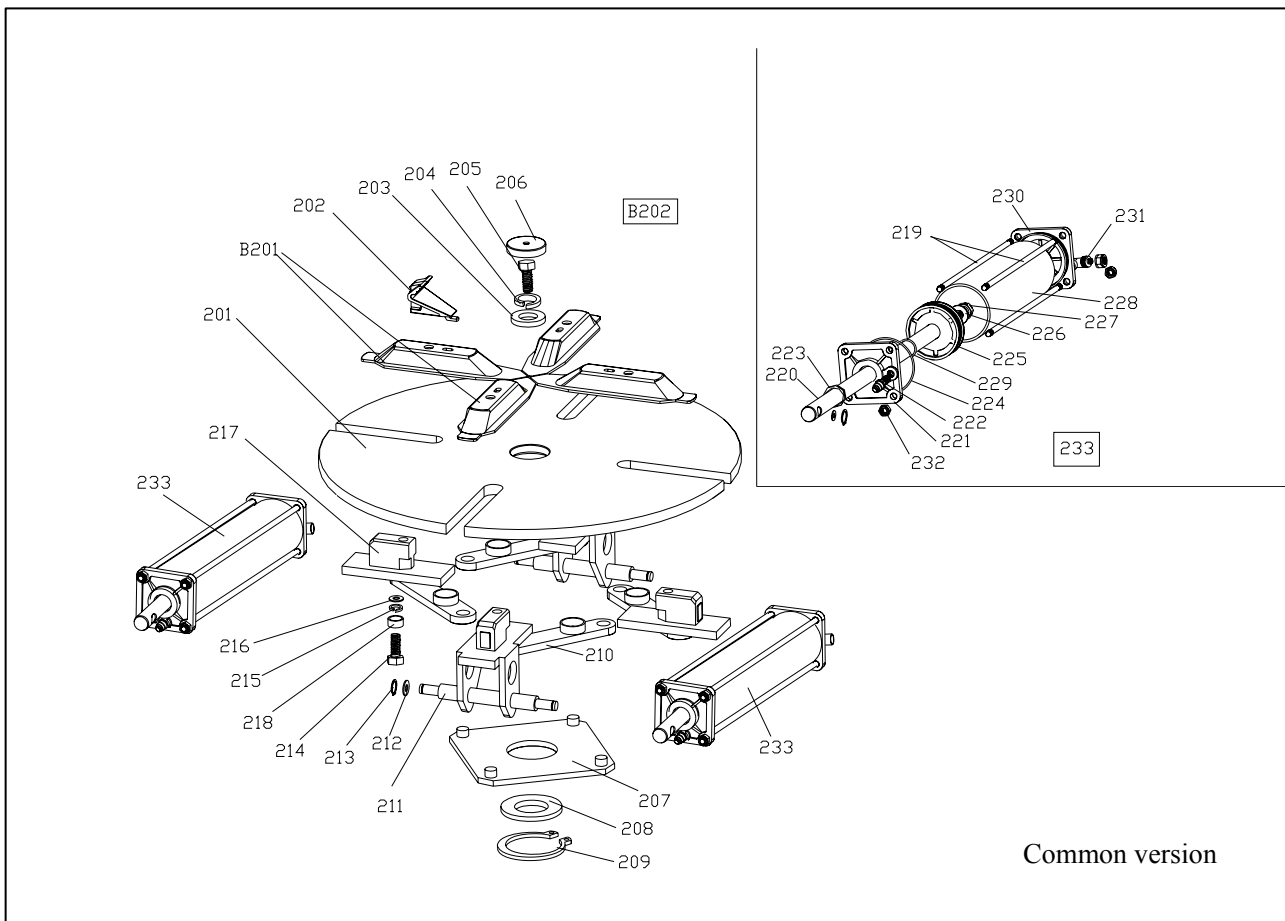
Fig 16

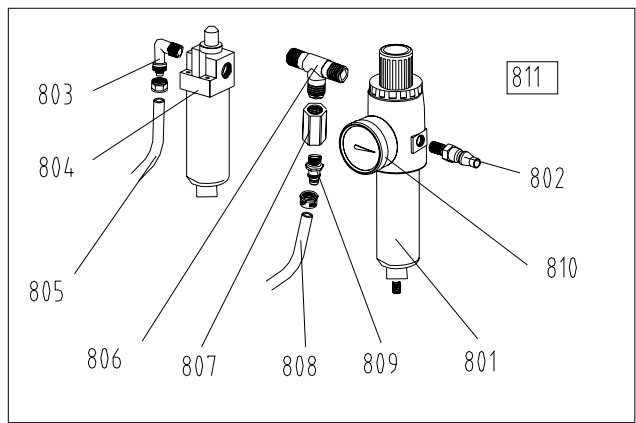
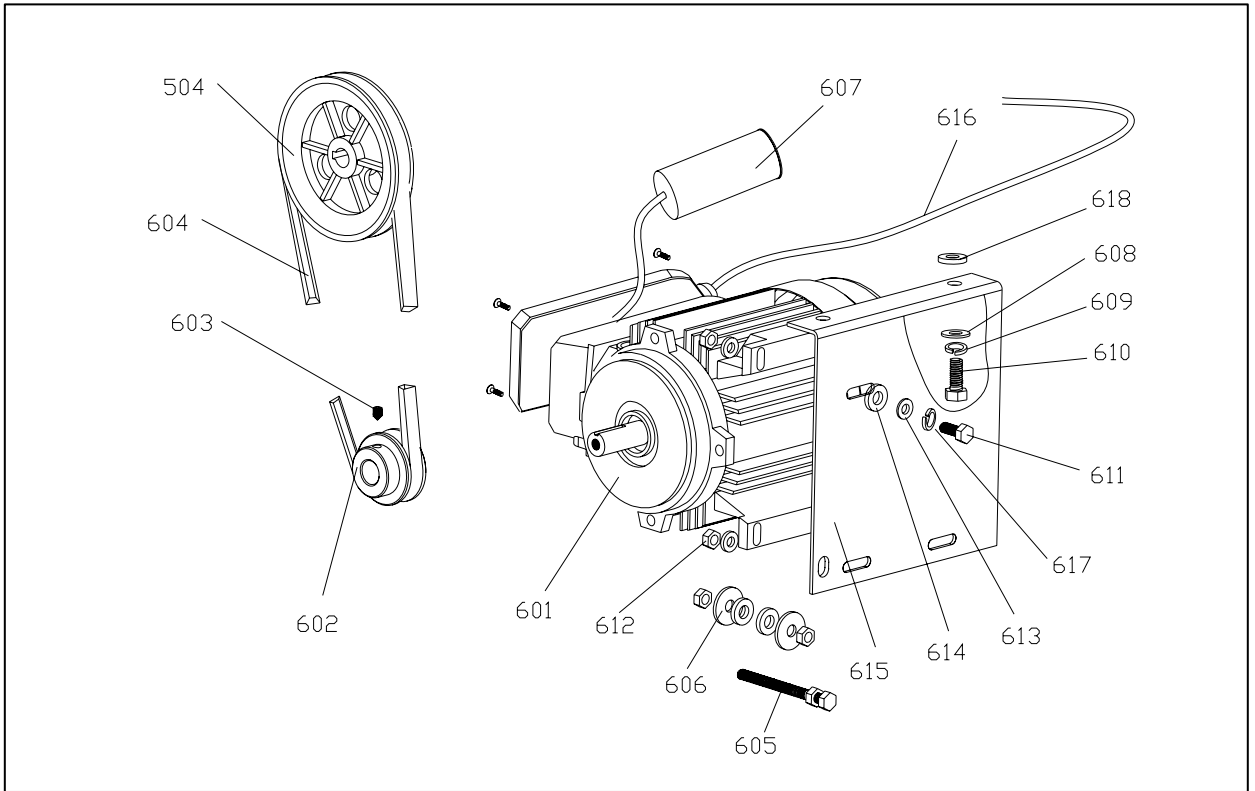
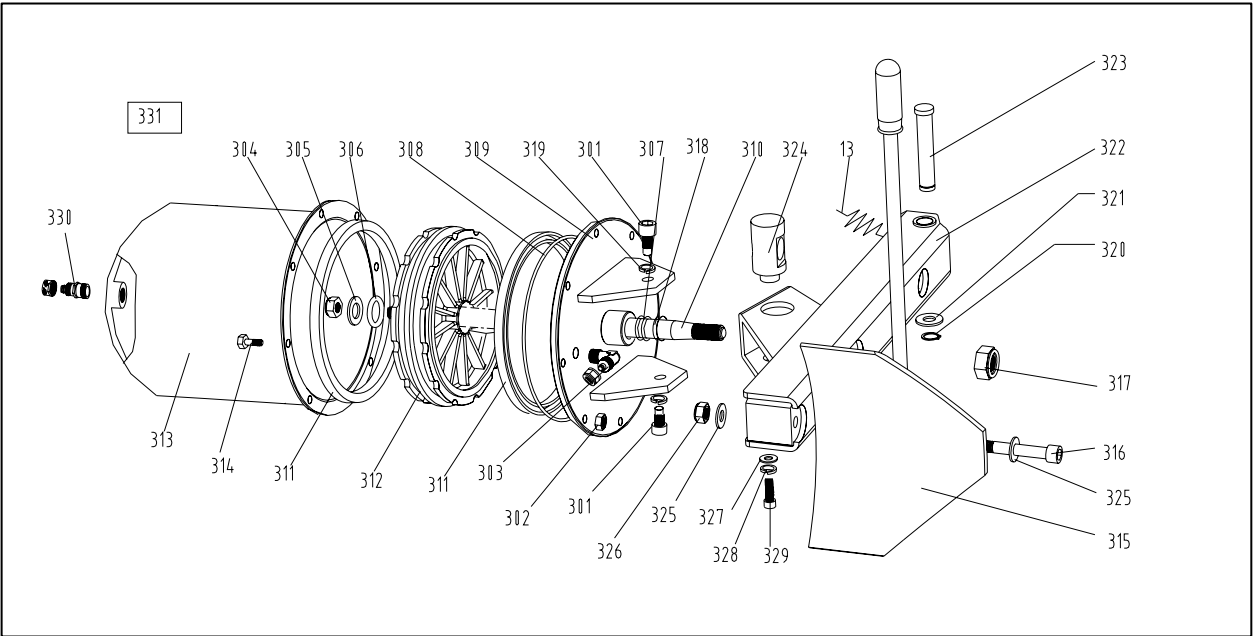
17. Trouble shooting table:

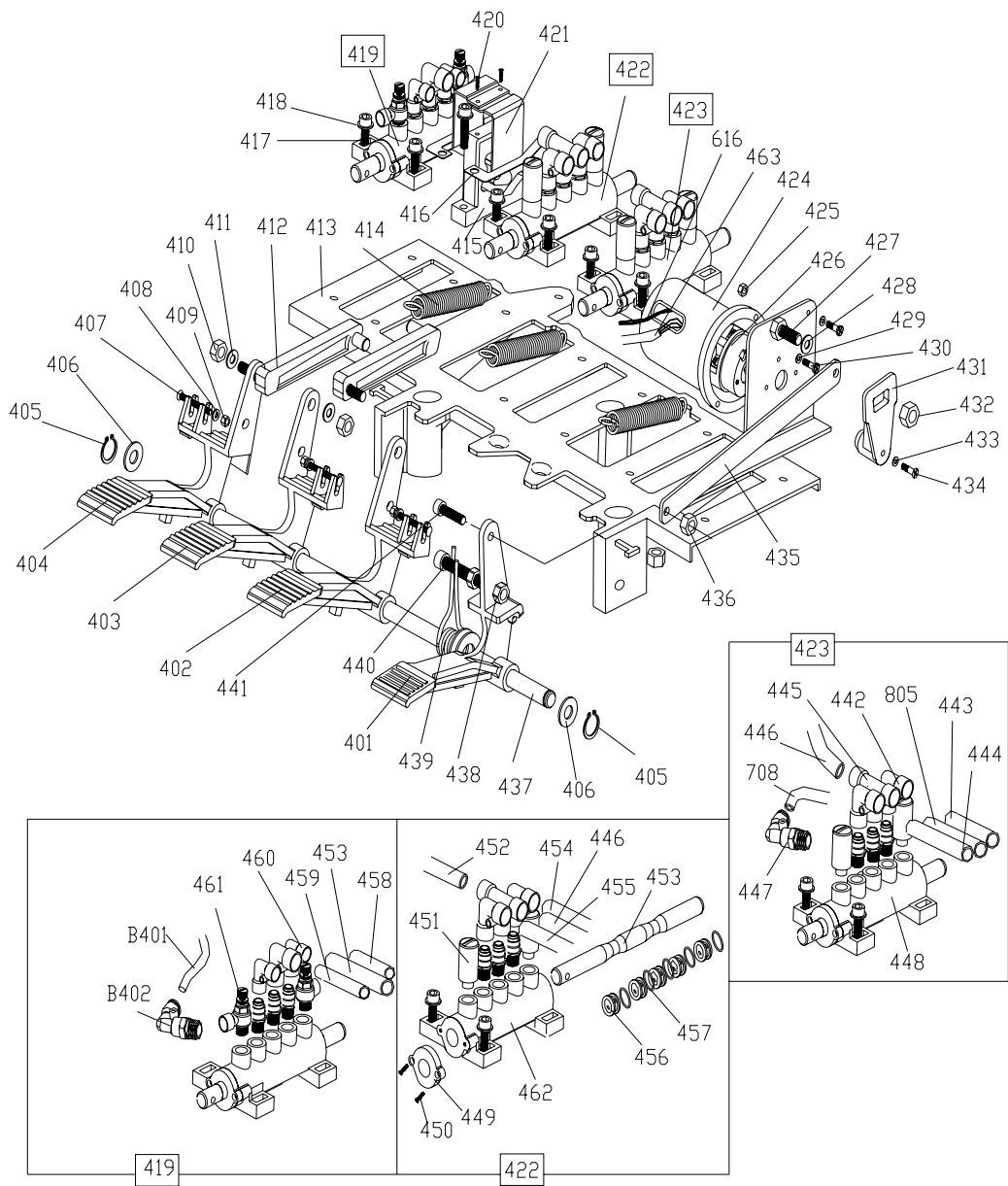
Problem	Reason	Solution
The turntable rotate just in one direction or can't rotate	Damaged switch	Replace it.
	Damaged belt	Replace it.
	The Motor's malfunction	Check the cable or wire; Replace the motor if damaged.
The jaws delay to open/close; the turntable can't lock or lock incorrectly	Leakage of Air network	Check all the parts on the air network.
	The cylinder can't work.	Replace the cylinder piston.
	Worn jaws	Replace the jaws.
	Broken washers of the chuck cylinder	Replace it.
The mounting head always touches the rim during operation.	The locking plate incorrectly adjust or unqualified.	Replace or adjust it.
	Screws on the chuck loose; the locking plate can't be locked	Tighten the screws; replace the plate.
The bead breaker arm and jaw clamping arm can't turn back to the original position.	Bad pedal spring	Replace it.
The bead breaker operates difficultly.	Jammed silencer	Clean it or replace it.
	The washer on the bead breaker cylinder is broken.	Replace it.



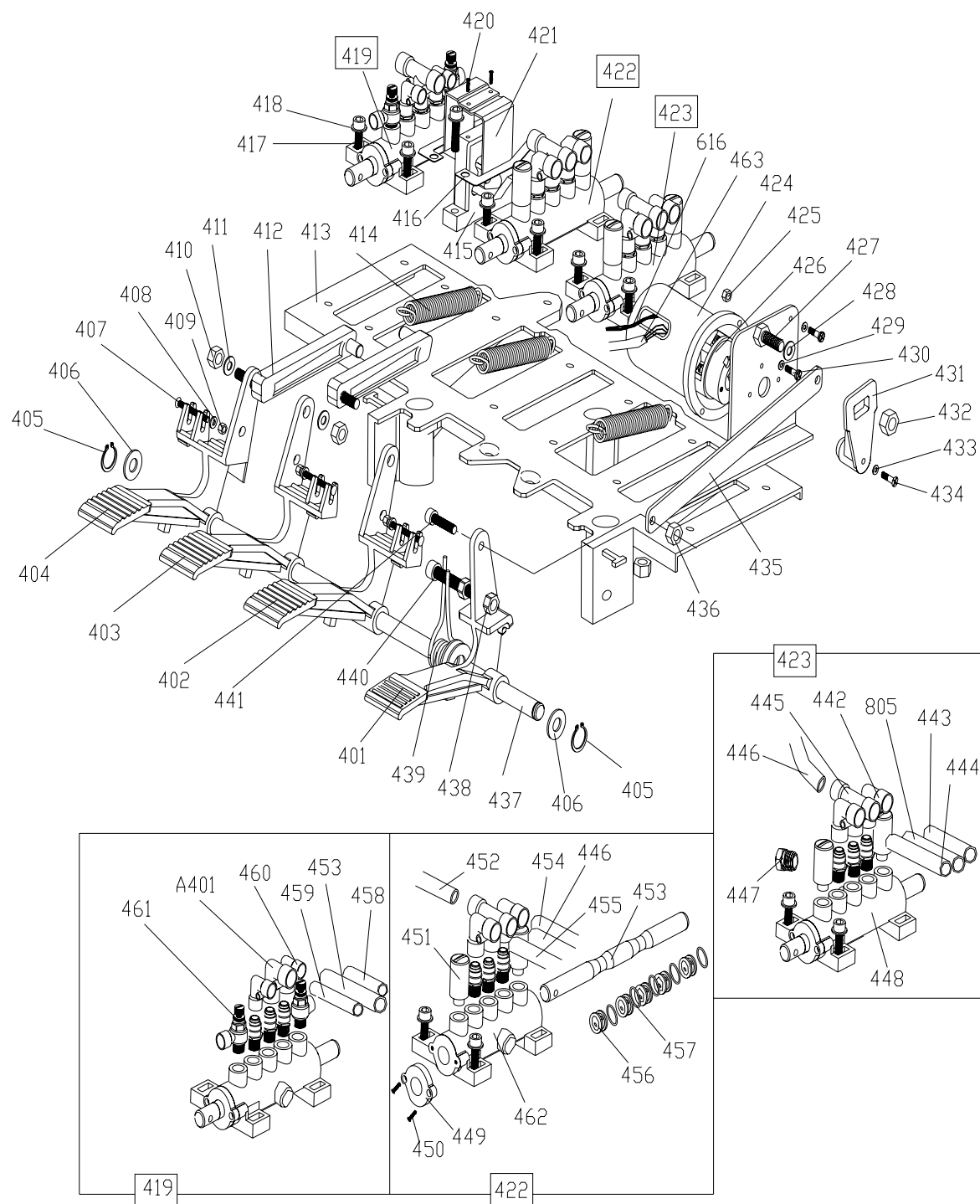
A version



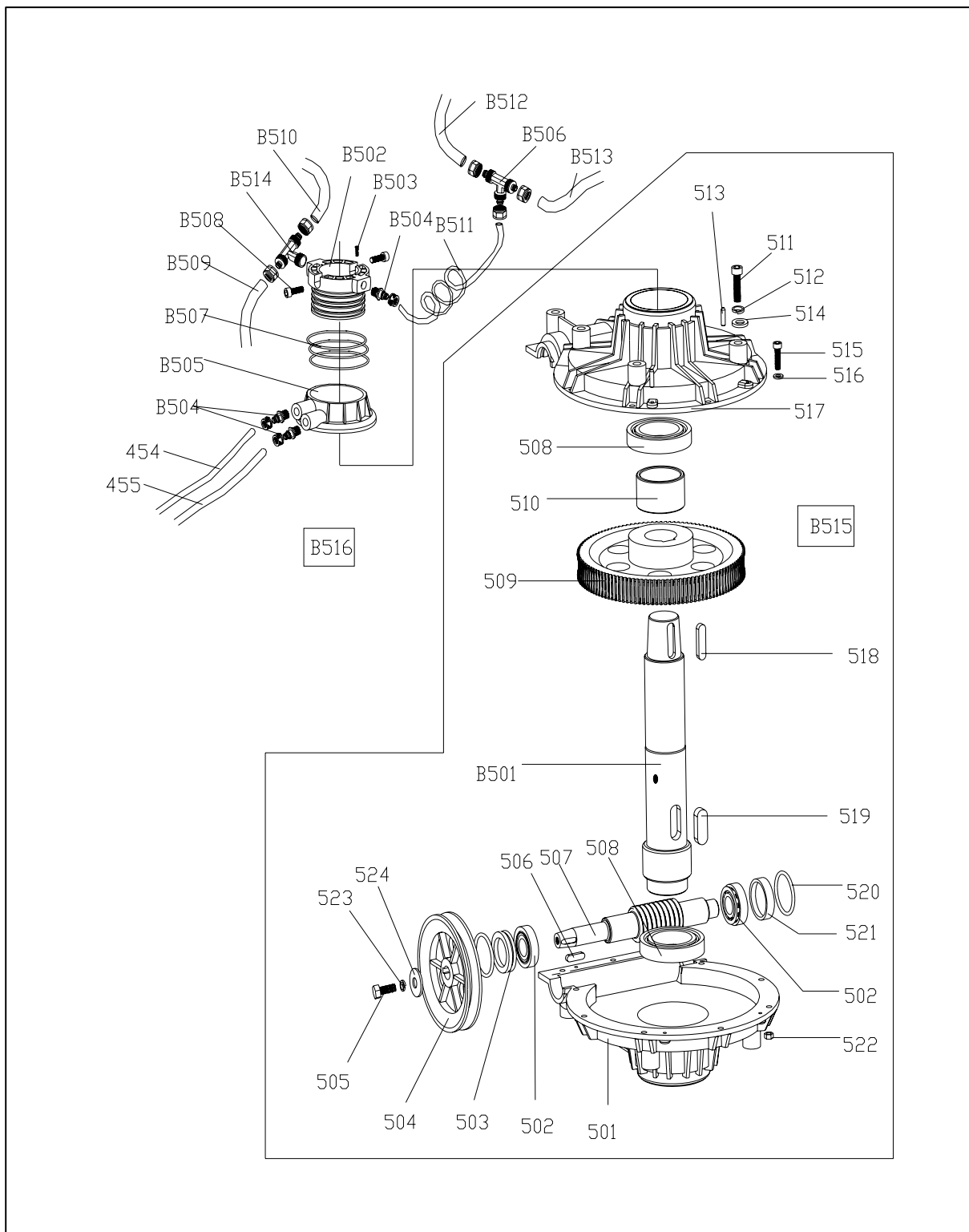




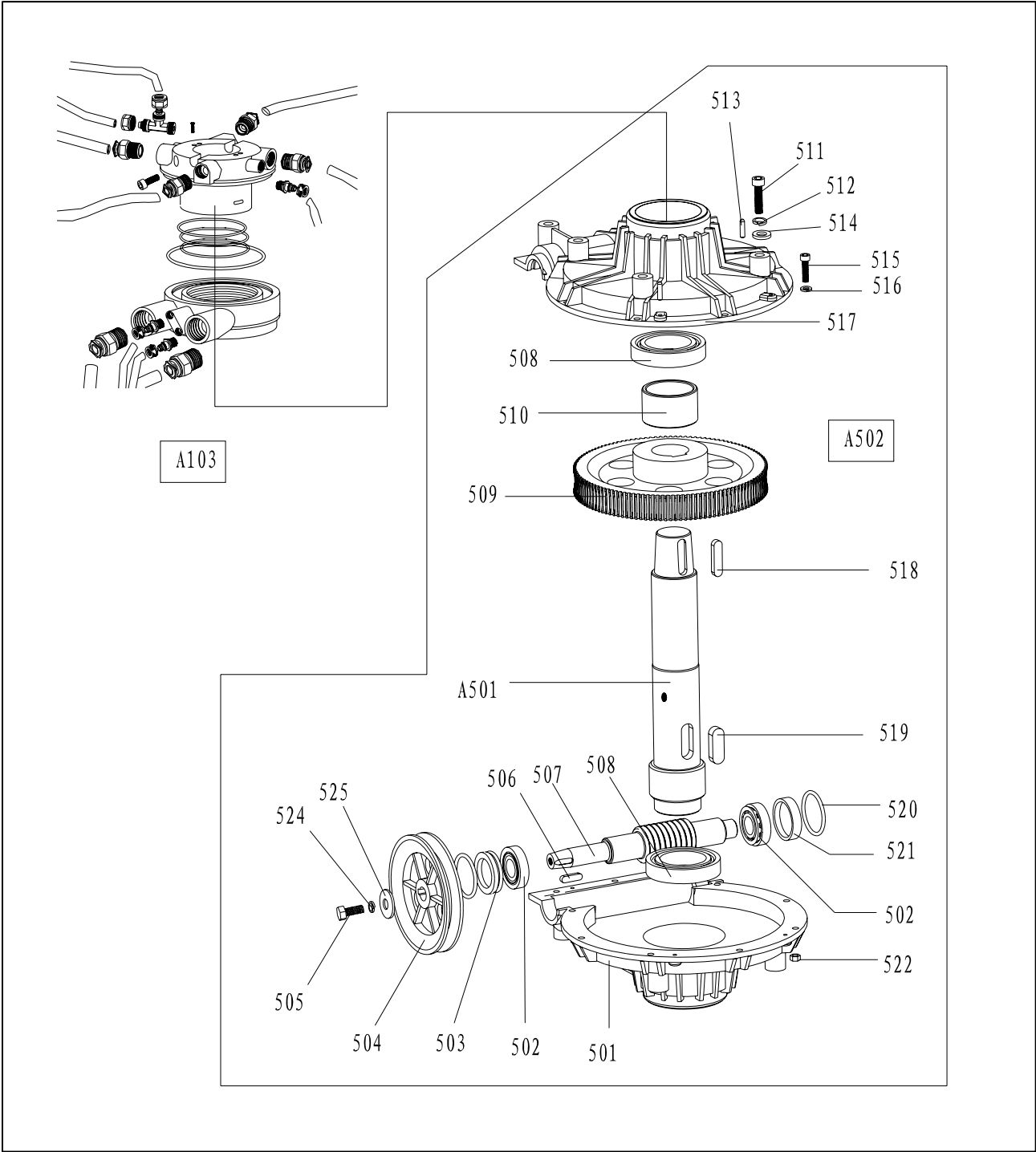
Common version



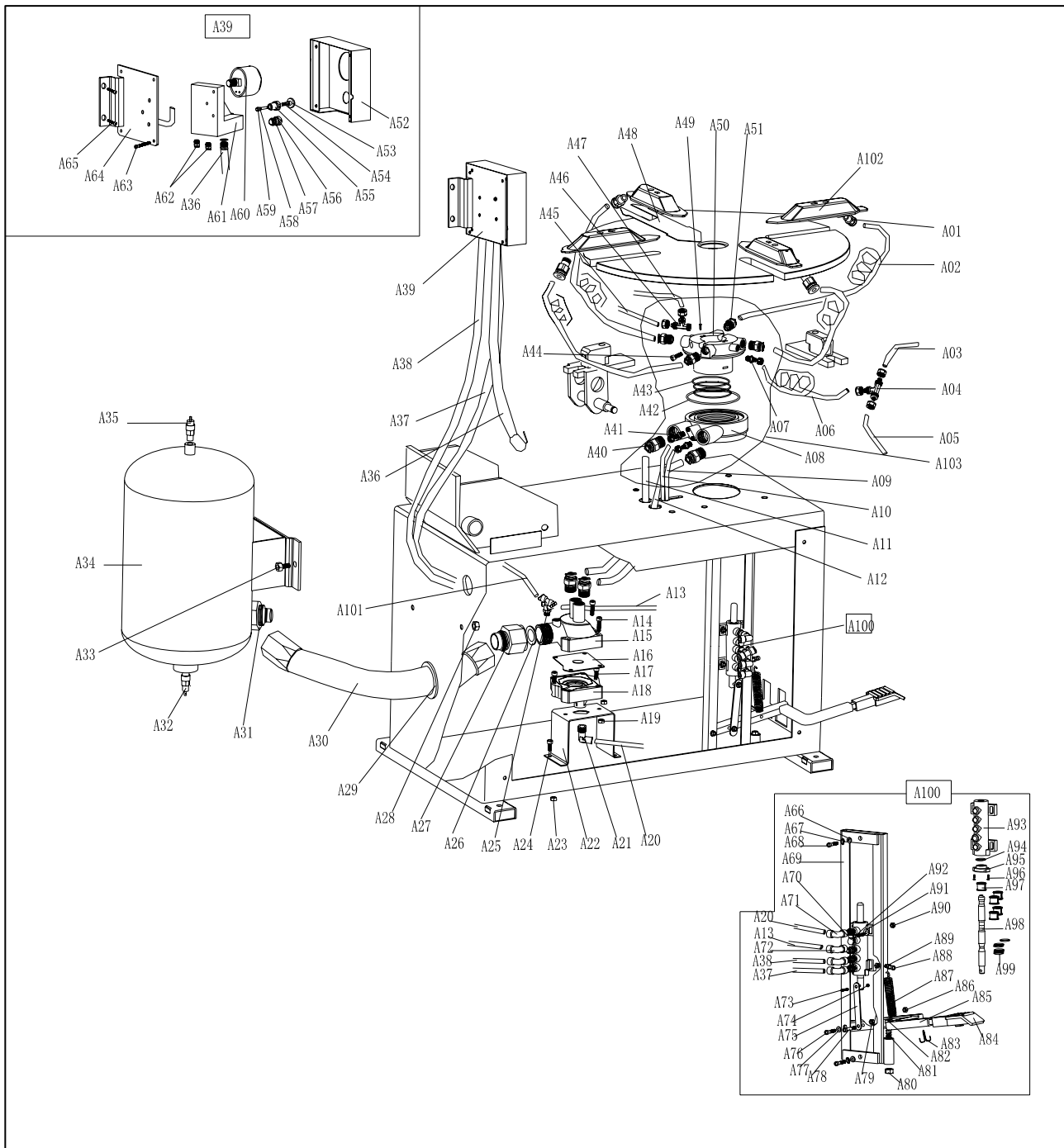
A version



Common version



A version



A version

19. Spare part list

THE SAME SPARE PART LIST OF COMMON&A VERSION				
ID	Item No.	Drawing No.	Qty	Product Name
Parts of total assembly				
1	CX-221-080000-0	U221.01.08	1	front cover
2	B-040-061412-1	GB/T 95	2	flat washer $\phi 6*14*1.2$
3	B-010-060551-0	GB/T 70	2	screw M6*55
4	B-014-080201-0	GB/T 70	2	screw M8*20
5	B-040-081715-1	GB/T 95	2	flat washer $\phi 8*17*1.5$
6	B-050-080000-0	GB/T 93	2	spring washer $\phi 8$
7	B-004-080001-0	GB/T 41	2	nut M8
8	C-221-500000-0	U221.01.50	1	rubber buffer B type
9	B-027-060401-0	GB/T 70	4	screw M6*40
10	C-200-580000-0	U200.01.58	1	lifting lever
11	C-200-360000-0	U200.01.36	1	spring
12	C-200-510000-0	U200.01.51	1	rubber support
13	C-200-470000-0	U200.01.47	1	box
14	C-000-001020-0		4	rubber foot
15	B-010-080251-0	GB/T 70	4	screw M8*25
16	B-040-082220-1	GB/T 95	4	flat washer $\phi 8*22*2$
17	B-014-100251-0	GB/T 70	2	screw M10*25
18	B-004-100001-0	GB/T 41	2	nut M10
19	C-221-820000-0	U221.01.82	1	plastic cover
20	B-014-080251-0	GB/T 70	2	screw M8*25
Parts of column, horizontal arm& vertical arm				
101	S-012-010806-0	U221.03.37	1	L-union 1/8- $\phi 6$
102	CZ-221-090100-0	U221.01.09.01	2	locking cylinder piston
103	S-005-050065-0		2	V-seal 60*50*6.5
104	B-040-061412-1	GB/T 95	4	flat washer $\phi 6*14*1.2$
105	B-010-060551-0	GB/T 70	4	screw M6*55
106	CX-221-090200-0	U221.01.09.02	2	locking cylinder cover $\phi 60$
107	CX-221-190000-0	U221.01.19	1	horizontal locking plate
108	B-040-081715-1	GB/T 95	2	flat washer $\phi 8*17*1.5$
109	C-221-410000-0	U221.01.41	2	horizontal locking spring
110	CX-221-240000-0	U221.01.24	1	arm protection support
111	B-040-081715-1	GB/T 95	1	flat washer $\phi 8*17*1.5$
112	B-040-081715-1	GB/T 95	2	flat washer $\phi 8*17*1.5$
113	B-014-080201-0	GB/T 70	2	screw M8*20
114	B-010-080501-0	GB/T 70	1	screw M8*50
115	C-200-490000-0	U200.01.49	1	knob
116	C-221-480000-0	U221.01.48	1	plastic cover
117	C-200-390000-0	U228.01.39	1	spring
118	CX-221-220000-0	U221.01.22	1	vertical locking plate
119	C-221-400000-0	U221.01.40	2	spring
120	CX-200-160000-0	U221.01.16	1	hexagonal vertical arm
121	C-200-520000-0	U200.01.52	1	buffer bush
122	CX-200-150200-0	U200.01.15.02	1	pulley
123	C-221-501000-0	U200.01.15.01	1	mounting head
124	C-200-150400-0	U200.01.15.04	1	pin
125	B-014-100251-0	GB/T 78	1	screw M10*25
126	CX-200-170000-0	U200.01.17	1	flat washer

127	B-007-120161-0	GB/T 80	3	screw M12*16
128	C-221-200000-0	U221.01.18	1	Slide arm
129	B-010-060351-0	GB/T 950	2	screw M6*35
130	CZ-221-590000-0	U221.01.59	2	washer
131	CW-113-020003-0	U200.01.15	1	Complete mounting head
132	B-001-080001-0	GB/T 1337	2	self-locking nut M8
133	B-010-060301-0	GB/T 950	2	screw M6*30
134	B-001-120001-0	GB/T 1337	2	self-locking nut M12
135	B-040-122520-1	GB/T 95	2	flat washer $\phi 12*25*2$
136	C-221-230000-0	U221.01.23	2	horizontal locking cone
137	B-001-080001-0	GB/T 1337	1	self-locking nut M8
138	S-017-010806-2	U221.03.37	1	T-union 1/8-2* $\phi 6$
139	S-035-060040-0	C2330360	1	hose 6*4
140	S-035-060040-0	C2330360	1	hose 6*4
141	S-010-010806-0	C2330342	2	union 1/8- $\phi 6$
142	CW-119-021100-0	U221.01.21	1	complete switch handle
143	B-010-060161-0	GB/T 70	4	screw M6*16
144	S-035-060040-0	C2330313	1	hose 6*4
145	S-000-068353-0	JB 1092	2	O-seal $\phi 68.26*3.53$
146	C-221-350900-0	U221.01.35.09	4	tightener
147	C-221-350200-0	U221.01.35.02	1	cylinder rod
148	B-001-080001-0	GB/T 1337	8	self-locking nut M8
149	C-221-350100-0	U221.01.35.01	1	flange without handle
150	S-005-020080-0	JB/T 6997	1	V-seal $\phi 20*36*8$
151	C-221-550000-0	U200.01.55	1	tilting cylinder piston
152	B-004-120071-1	GB/T 1337	1	nut M12*7*1.5
153	C-221-350500-0	U221.01.35.05	1	tilting cylinder
154	S-011-010806-0	C2110342	2	union 1/8- $\phi 6$
155	C-221-350300-0	U221.01.35.03	1	flange with handle
156	CX-221-351000-0	U221.01.35.10	1	bell-mouthed sheath
157	C-221-350700-0	U221.01.35.07	1	rubber sheath
158	B-014-100251-0	GB/T 5781	2	screw M10*25
159	CX-221-270000-0	U221.01.27	2	flat washer
161	B-001-120001-0	GB/T 1337	1	self-locking nut M12
163	B-014-100251-0	GB/T 27	1	screw M10*25
164	CX-221-260000-0	U221.01.26	1	tilting pin
165	B-024-050161-1	GB/T 5781	3	screw M5*16
166	C-221-460000-0	U221.01.46	1	plastic cover
167	C-221-450000-0	U221.01.45	1	plastic cover
168	B-040-061412-1	GB/T 95	2	flat washer $\phi 6*14*1.2$
169	C-221-350800-0	U221.01.35.08	2	flat washer
170	C-000-001015-0	U221.01.35.04	1	cover
171	C-221-790000-0		1	plastic cover
172	CW-105-021102-0	U221.01.35	1	complete tilting cylinder
173	CX-221-250000-0	U221.01.25A	1	vertical column
174		U221.01.09	2	complete locking cylinder
175	C-221-210100-0	U221.01.21.01	1	switch
176	CX-221-210200-0	U221.01.21.02	1	valve pole
177	C-221-210500-0	U221.01.21.05	2	button
178	C-221-210300-0	U221.01.21.03	1	cover
179	C-221-210400-0	U221.01.21.04	3	spacer
180	S-000-007265-0	JB 1092	4	O-seal 7.5*2.65
181	B-055-080001-0		1	retainer ring $\phi 8$
Parts of turning table assembly				
201	CX-221-130000-0	U221.01.13.01	1	turntable

202	C-200-570000-0	U200.01.57	4	jaw
203	CX-200-140000-0	U200.01.14	1	turntable washer
204	B-050-160000-0	GB/T 95	1	spring washer φ16
205	B-014-160401-0	GB/T 5781	1	screw M16*40
206	C-200-440000-0	U200.01.44	1	cap
207	CX-221-280000-0	U221.01.28	1	control plate
208	CX-200-290000-0	U200.01.29	1	washer
209	B-055-650001-0	GB/T 894	1	retainer ring φ65
210	CX-221-310000-0	U221.01.31	4	connecting rod
211	CX-221-110000-0	U221.01.11A	2	slide guide with pin
212	B-040-122520-1	GB/T 95	4	flat washer φ12*25*2
213	B-055-120001-0	GB/T 894.1	4	retainer ring φ12
214	B-014-120801-0	GB/T 80	4	screw M12*80
215	B-050-120000-0	GB/T 95	4	spring washer φ12
216	B-040-123030-1	GB/T 95	4	flat washer φ12*30*3
217	CX-221-110100-0	U221.01.11.01A	2	slide guide
218	CX-200-300000-0	U200.01.30	4	spacer bush φ20
219	C-221-100400-0	U221.01.10.04	8	tightener
220	C-221-100200-0	U221.01.10.02	2	cylinder rod
221	C-200-100100-0	U200.01.10.01	2	flange without handle
222	S-011-010808-0	C2110336	2	union 1/8-φ8
223	S-005-020075-0	JB/T 6997	2	V-seal UHS-20*28*7.5
224	S-000-063265-0	JB1092	4	O-seal 63*2.65
225	C-200-540000-0	U200.01.54	2	piston
226	B-040-122520-1	GB/T 95	2	flat washer φ12*25*2
227	B-004-120071-1	GB/T 1337	2	nut M12*7*1.5
228	C-221-100500-0	U221.01.10.05	2	clamping cylinder
229	S-000-020265-0	JB1092	2	O-seal 20*2.65
230	C-200-100300-0	U200.01.10.03	2	flange with handle
231	S-012-010808-0	U221.03.37	2	L-union 1/8-φ8
232	B-001-080001-0	GB/T 1337	16	self-locking nut M8
233	CW-105-021100-0	U221.01.10	2	complete clamping cylinder
Parts of bead breaker cylinder& breaker arm assembly				
301	B-010-140301-0	U200.01.05.05.03	2	screw M14*30
302	B-001-060001-0	GB/T 41	12	self-locking nut M6
303	S-018-010408-0	C2110353	1	L-union 1/4-φ8
304	B-004-160001-1	GB/T 1337	1	nut M16*1.5
305	B-040-162820-1	GB/T 95	2	flat washer φ16*28*2
306	S-000-016265-0	JB1092	1	O-seal 16*2.65
307	S-000-016265-0	JB1092	2	O-seal 20*2.65
308	S-000-180500-0	JB1092	2	O-seal 180*3.5
309	CX-200-050500-0	U200.01.05.05	1	bead breaker cylinder lid(front)
310	C-200-050100-0	U200.01.05.01	1	bead breaker rod
311	S-005-168115-0	JB/T 1091	2	V-seal 185*168*11.5
312	C-200-050200-0	U200.01.05.02	1	piston
313	CX-200-050300-0	U200.01.05.03	1	bead breaker cylinder
314	B-010-060201-0	GB/T 70	12	screw M6*20
315	CX-200-070000-0	U200.01.07	1	shovel
316	B-010-121001-0	GB/T 70	1	screw M12*100
317	B-001-160001-1	GB/T 1337	1	self-locking nut M16
318	U-006-000001-1	U200.01.05.08	1	guide belt
319	B-050-140000-0	GB/T 95	2	spring washer φ14
320	B-055-160001-0	GB/T 894.1	1	retainer ring φ16
321	B-040-162820-1	GB/T 96	1	flat washer φ16*28*2

322	CX-200-030000-0	U200.01.03	1	bead breaker
323	CX-200-040000-0	U200.01.04	1	pin
324	CX-200-050600-0	U200.01.05.06	1	rotating pin
325	B-040-122520-1	GB/T 95	2	flat washer $\phi 12*25*2$
326	B-001-120001-0	GB/T 1337	1	self-locking nut M12
327	B-040-083030-1	GB/T 5287	1	flat washer $\phi 8*30*3$
328	B-050-080000-0	GB/T93	1	spring washer $\phi 8$
329	B-014-080201-0	GB/T 5783	1	screw M8*20
330	S-011-010808-0	C2110353	1	union 1/8- $\phi 8$
331	CW-108-020000-0	U200.01.05	1	complete bead breaker cylinder
Parts of pedals assembly				
401	C-200-060400-0	U200.01.06.04	1	pedal
402	C-221-060300-0	U200.01.06.03	1	pedal
403	C-221-060300-0	U200.01.06.03	1	pedal
404	C-221-060200-0	U200.01.06.02	1	pedal
405	B-055-120001-0	GB/T 894.1	2	retainer ring $\phi 12$
406	B-040-122520-1	GB/T95	2	flat washer $\phi 12*25*2$
407	B-017-040301-0	GB/T 973	3	screw M4*30
408	B-040-040000-1	GB/T 1337	6	flat washer $\phi 4$
409	B-001-040001-0	GB/T95	3	self-locking nut M4
410	B-001-080001-0	GB/T 1337	2	self-locking nut M8
411	B-040-081715-1	GB/T 5287	2	flat washer $\phi 8*17*1.2$
412	C-200-061300-0	U200.01.06.13	2	cam connecting rod
413	C-221-060100-0	U221.01.06.01	1	pedal support
414	C-200-380000-0	U200.01.38	3	spring
415	C-200-061500-0	U200.01.06.15	1	cam
416	C-200-810000-0	U200.01.81	2	flat washer
417	B-010-060201-0	GB/T 70	14	screw M6*20
418	B-040-061210-1	GB/T95	14	flat washer $\phi 6*12*1$
419	CW-110-021102-0		1	complete 5-way valve
420	B-019-290121-0	GB/T 845	2	tap screw ST2.9*12
421	CX-200-060500-0	U200.01.06.05	2	cam cover
422	CW-110-020000-0		1	complete 5-way valve
423	CW-110-020001-0		1	complete 5-way valve
424	C-200-061400-0	U200.01.06.14	1	switch cover
425	B-004-040001-1	GB/T 41	2	nut M4
426	S-060-030000-0		1	switch
427	B-010-060201-0	GB/T 70	1	screw M6*20
428	B-040-061210-1	GB/T 95	1	flat washer $\phi 6*12*1$
429	B-040-040000-1	GB/T 95	4	flat washer $\phi 4$
430	B-024-040161-0	GB/T 70	4	screw M4*16
431	C-200-530000-0	U200.01.53	1	switch handle
432	B-001-060001-0	GB/T 41	1	self-locking nut M6
433	B-040-040000-1	GB/T 95	1	flat washer $\phi 4$
434	B-017-040301-0	GB/T 845	1	screw M4*30
435	CX-200-060600-0	U200.01.06.06	1	connecting rod
436	B-001-080001-0	GB/T 41	1	self-locking nut M8
437	CX-221-060700-0	U221.01.06.07	1	pedal shaft
438	B-004-080001-0	GB/T 41	2	nut M8
439	C-200-370000-0	U200.01.37	1	twist spring
440	B-010-080501-0	GB/T 70	1	screw M8*50
441	B-010-080201-0	GB/T 70	3	screw M8*20
442	S-012-010808-0	1/8- $\phi 8$	4	L-union 1/8- $\phi 8$
443	S-035-050080-0	5*8	1	hose 5*8
444	S-035-050080-0	5*8	1	hose 5*8

445	S-016-010808-2	1/8-2*φ8	3	T-union 1/8-2*φ8
446	S-035-050080-0	5*8	1	hose 5*8
447	S-012-010806-0	1/8-φ6	1	L-union 1/8-φ6
448	C-200-060901-0	U200.01.06.09.01	2	5-way valve
449	C-200-061100-0	U200.01.06.11	3	valve cover
450	B-024-290161-0	GB/T 70	6	tap screw ST2.9*16
451	S-023-010801-0	C211011221	4	silencer 1/8"
452	S-035-050080-0	5*8	1	hose 5*8
453	CX-200-061200-0	U200.01.06.12	3	valve pole
454	S-035-050080-0	5*8	1	hose 5*8
455	S-035-050080-0	5*8	1	hose 5*8
456	C-200-061000-0	U200.01.06.10	15	spacer
457	S-000-012400-0	JB1092	18	O-seal 12*20*4
458	S-035-060040-0	6*4	1	hose 6*4
459	S-035-060040-0	6*4	1	hose 6*4
460	S-012-010806-0	1/8-φ6	2	L-union 1/8-φ6
461	S-030-010806-0	1/8-φ6	2	adjust valve 1/8-φ6
462	C-200-060901-0	U200.01.06.09	2	5-way valve
463	CZ-000-103150-0		1	wire 3*1.5
Parts of transmission assembly				
501	CZ-200-320300-2	U200.01.32.03B	1	bottom cover
502	S-040-030204-0	GB/T 297	2	bearing 30204
503	S-005-020080-1	GB/T 10708	1	seal φ20*35*8
504	CZ-200-320500-0	U200.01.32.05	1	pulley
505	B-014-080201-0	GB/T 70	1	screw M8*20
506	B-065-006020-0	GB/T 1096	1	key 6*20
507	C-200-320400-0	U200.01.32.04	1	worm screw
508	S-040-006010-0	GB/T 292	2	bearing 6010
509	C-200-320100-0	U200.01.32.01	1	worm gear
510	CZ-200-320600-0	U200.01.32.06	1	spacer
511	B-014-100551-0	GB/T 5783	6	screw M10*55
512	B-050-100000-0	GB/T93	6	spring washer φ10
513	B-060-006020-0	GB/T 117	2	pin 6*20
514	B-040-102020-1	GB/T95	6	flat washer φ10*20*2
515	B-010-060201-0	GB/T 70	10	screw M6*20
516	B-040-061412-1	GB/T95	10	flat washer φ6*14*1.2
517	CZ-200-320300-1	U200.01.32.03A	1	upper cover
518	B-065-010040-0	GB/T 1096	1	key 10*40
519	B-065-014040-0	GB/T 1096	1	key 14*40
520	S-000-027310-0	JB1092	2	O-seal φ27.8*3.1
521	S-005-020080-1	U200.01.32.07	1	seal
522	B-001-060001-0	GB/T 1337	10	self-locking nut M6
523	B-050-080000-0	GB/T93	1	Spring washer φ 8
524	B-040-083030-1	GB/T95	2	Flat washer φ 8*30*3
Parts of motor assembly				
601		C2110201	1	motor MY8024
602	CX-200-330000-0	U200.01.33	1	motor pulley
603	B-007-080121-0	GB/T 71	1	screw M8*12
604	S-042-000028-0	GB/T11544-1997	1	belt A-28
605	B-014-080701-0	GB/T 71	1	screw M8*70
606	B-040-083030-1	GB/T 71	2	flat washer φ8.5*30*3
607	S-063-006000-0	GB/T 11544	1	capacitor
608	B-040-102020-1	GB/T 1337	2	flat washer φ10*20*2
609	B-050-100000-0	GB/T93	2	spring washer φ10
610	B-014-100251-0	GB/T 70	2	screw M10*25

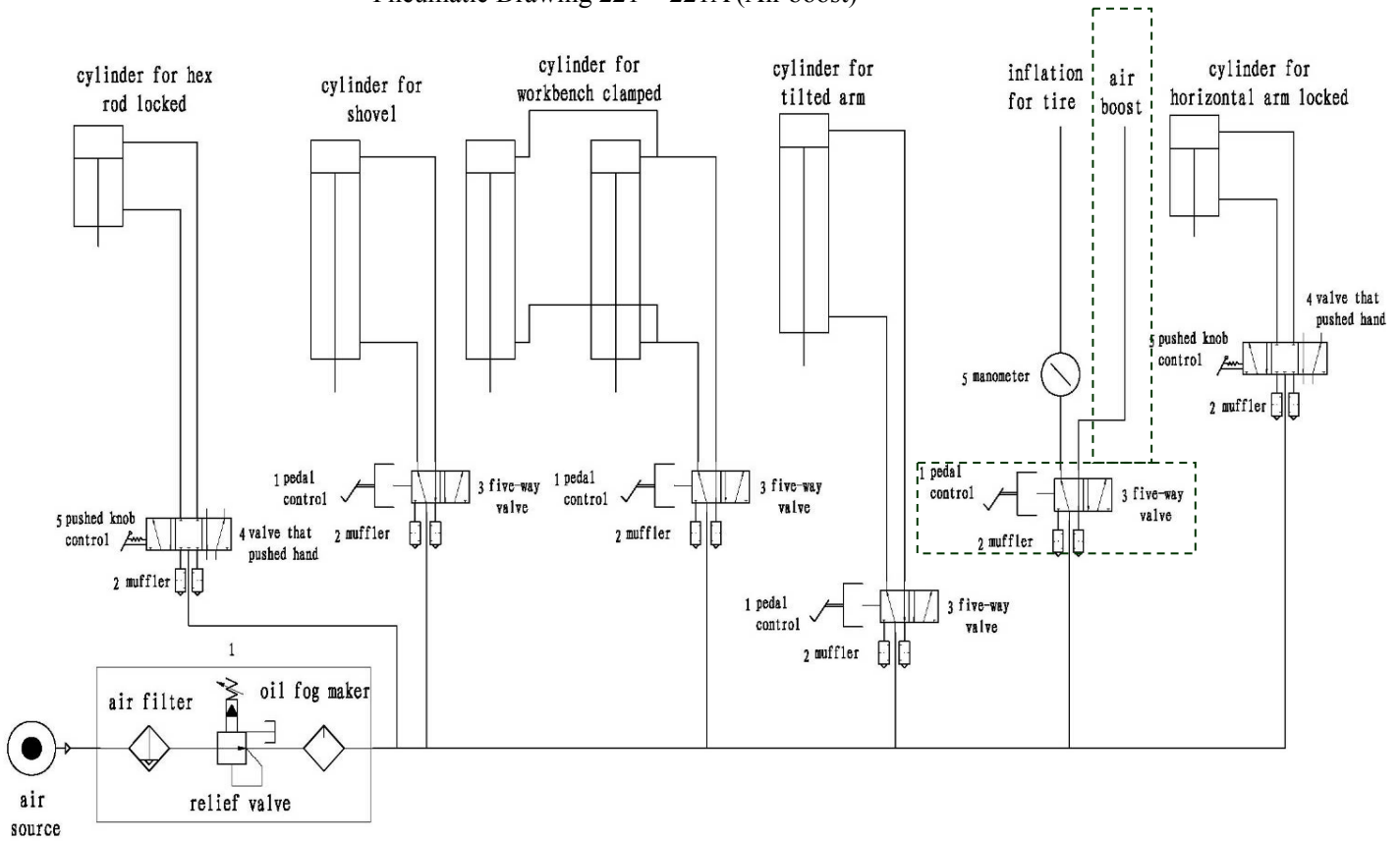
611	B-014-080251-0	GB/T 70	4	screw M8*25
612	B-004-080001-0	GB/T95	7	nut M8
613	B-040-082220-1	GB/T 1337	8	flat washer $\phi 8*22*1.5$
614	C-200-560000-0	U200.01.56	6	rubber washer
615	CX-200-340000-2	U221.01.34	1	motor support
616	CZ-000-205150-0	RVV	1	wire 5*1
617	B-050-080000-0	GB/T93	2	spring washer $\phi 8$
618	C-200-560000-0	U200.01.56	2	rubber washer
Parts of air filter& oil fog maker assembly				
801	S-033-200002-1	U2000332	1	relief pressure filter
802	S-025-000050-0	U2000333	1	quick nozzle
803	S-018-010408-0	U2000343	1	L-union
804	S-033-200002-2		1	oil fog maker
805	S-035-050080-0	U200033003	1	hose 5*8
806	S-015-010414-3		1	big T-joint
807	S-011-010414-0		1	union 1/4-1/4
808	S-035-050080-0		1	hose 5*8
809	S-011-010808-0		1	union 1/8- $\phi 8$
810	S-038-000010-0		1	manometer
811	CW-114-020000-0		1	oil fog maker assembly
THE SPECIAL SPARE PART LIST OF COMMON VERSION				
B001	CX-221-010000-0	U221.01.01	1	body
B002		U221.01.02	1	left cover
B201	CX-200-120000-0	U200.01.12	4	slide
B202	CW-104-021100-0	U221.01.13	1	complete turntable $\Phi 615$
B401	S-035-060040-0		1	hose 6*4
B402	S-012-010806-0		1	L-union 1/8- $\phi 6$
B501	C-200-320200-0	U221.01.32.02A	1	worm gear shaft
B502	CZ-200-430200-0	U200.01.43.02	1	rotating union mandrel
B503	B-007-040061-0	GB/T 5783	2	screw M4*6
B504	S-011-010808-0	C2110342	3	union 1/8"- $\phi 8$
B505	CZ-200-430100-0	U200.01.43.01	1	rotating valve casing
B506	S-015-000008-3	C2110341	1	T-union 3* $\phi 8$
B507	S-000-059262-0	JB1092	3	O-seal 59.9*2.62
B508	B-010-060201-0	GB/T 70	2	screw M6*20
B509	S-035-050080-0		1	air inlet hose 5*8
B510	S-035-050080-0		1	air inlet hose 5*8
B511	S-035-055080-0		1	hose 5.5* $\phi 8$
B512	S-035-050080-0		1	air outlet hose 5*8
B513	S-035-050080-0		1	air outlet hose 5*8
B514	S-017-010808-2	C2110341	1	T-union 1/8-2* $\phi 8$
B515	CW-107-020001-0	U221.01.32A	1	complete gearbox
B516	CW-106-020000-0	U200.01.43	1	complete rotating union
B701	S-038-000100-0	U2001033001	1	air gauge
B702	S-035-014150-1	U200033003	1	hose
B703	S-025-104008-0	U2000334	1	nut
B704	S-011-010414-1		1	union 1/4-1/4
B705	B-040-132420-1	GB/T 1337	1	flat washer $\phi 13$
B706	S-030-010400-2	AR2000	1	pressure reducer
B707	S-012-010408-0		1	L-union 1/4- $\phi 8$
B708	S-035-050080-0	U200033002	1	hose 5*8
B709	S-038-000100-0	U2000330	1	complete inflating gun
THE SPECIAL SPARE PART LIST OF A VERSION				
A001	CX-221-010000-A	U221.01.01A	1	body
A002	CX-221-020000-A	U221.01.02A	1	left cover
A201	S-010-010410-0	U221.01.13A	1	complete turntable $\Phi 615a$

A501	S-035-065100-0	U200.01.32.02A	1	worm gear shaft
A502	S-035-050080-0	U200.01.43	1	complete gear box
A01	S-015-000008-3	1/4-φ10	4	union 1/4-φ10
A02	S-035-050080-0	6.5*φ10	4	hose 6.5*φ10
A03	S-035-055080-0		1	hose 5*8
A04	S-011-010808-0	3*φ8	1	T-union
A05	C-221-430100-A		1	hose 5*8
A06	S-035-050080-0	5.5*φ8	1	hose 5.5*φ8
A07	S-035-050080-0	1/8-φ8	1	union 1/8-φ8
A08	CW-109-021110-A	U221.01.43.01A	1	rotating valve casing
A09	S-035-050080-0		1	hose 5*8
A10			1	hose 5*8
A11	CW-106-022102-A	12*8	1	hose 12*8
A12	S-035-120080-0	12*8	1	hose 12*8
A13	S-035-120080-0		1	hose 5*8
A14	S-035-050080-0	GB/T 70	4	screw M6*30
A15	B-010-060301-0	U221.01.60.05A	1	exhaust valve
A16	C-221-600500-A	U221.01.60.07A	1	rubber sheet
A17	C-221-600700-A	GB/T 70	2	screw M6*20
A18	B-010-060201-0	U221.01.60.06A	1	exhaust valve cover
A19	C-221-600600-A	GB/T95	6	nut M6
A20	B-004-060001-1		1	hose 5*8
A21	S-035-050080-0	1/4-φ8	1	L-union 1/4-φ8
A22	CA-004-021100-A	U221.01.60.08A	1	exhaust valve support
A23	S-012-010408-0	GB/T95	2	nut M6
A24	CX-221-600800-A	GB/T 70	2	screw M6*16
A25	B-004-060001-1	1/8-2*φ8	1	T-union 1/8-2*φ8
A26	B-010-060161-0	U221.01.60.10A	1	rubber washer φ24*34*2
A27	S-016-010808-2	U221.01.60.09A	1	tie-in
A28	C-221-601000-A	GB/T95	2	self-locking nut M10
A29		U221.01.83A	1	rubber casing
A30	B-001-100001-0	U221.01.60.11A	1	hose
A31	S-005-044090-0	U221.01.61.14A	1	tie-in
A32	C-221-601100-A		1	water discharge valve
A33		GB/T 70	2	screw M10*25
A34	S-030-010400-0	U221.01.61A	1	tank
A35	B-014-100251-0	GB-TQ-L10	1	safety valve
A36	S-035-014150-0		1	connection hose
A37	S-035-050080-0	5X8	1	hose 5*8
A38	S-035-050080-0	5X8	1	hose 5*8
A39	CW-118-022100-0		1	complete pressure gauge box
A40	S-010-010212-0	1/2-φ12	4	union 1/2-φ12
A41	S-011-010808-0	1/8-φ8	2	union 1/8-φ8
A42	S-000-089200-0	89*2	1	O-seal
A43	S-000-062280-0	62*2.8	3	O-seal φ62*2.8
A44	B-010-060251-0	GB/T 70	2	screw M6*25
A45	S-035-050080-0	5X8	1	hose 5*8
A46	S-015-010808-2	1/8-2*φ8	1	T-union 1/8-2*φ8
A47	S-035-050080-0	5X8	1	hose 5*8
A48	CX-221-120300-0	221.01.12.03	1	slide plate
A49	B-007-040061-0	GB/T 70	2	screw M4*6
A50	C-221-430200-A	U221.01.43.02A	1	rotating union mandrel
A51	S-010-030810-0		4	union 3/8-φ10
A52	C-221-700000-A	221.01.70A	1	pressure gauge box
A53	C-221-690300-A	221.01.69.03A	1	button
A54	C-221-690400-A	221.01.69.04A	1	spring
A55	CX-221-690100-A	221.01.69.01A	1	valve
A56	S-023-010800-0	1/8	1	plug

A57	S-000-004180-0	4*1.8	1	O-seal 4*1.8
A58	S-000-006180-0	6.9*1.8	1	O-seal 6.9*1.8
A59	C-221-690200-A	221.01.69.02A	1	shaft
A60	S-038-000020-0		1	pressure gauge
A61	C-221-680000-A	221.01.68A	1	seat with holes
A62	S-010-010808-0		2	union 1/8-φ8
A63	B-017-040301-0	GB/T 70	7	screw M4*30
A64	CX-221-710000-A	221.01.71A	1	pressure gauge box support
A65	B-010-060161-0	GB/T 70	2	screw M6*16
A66	B-040-083030-1	GB/T 5287	2	flat washer φ8*30*3
A67	B-050-080000-0	GB/T93	2	spring washer φ8
A68	B-014-080251-0	GB/T 70	2	screw M6*25
A69	CX-221-620000-A	U221.01.62A	1	inflation pedal support
A70	S-023-010800-0		2	plug 1/8
A71	S-012-010808-0		3	L-union 1/8-φ8
A72	S-012-010808-0		1	L-union 1/8-φ8
A73	B-010-050201-0	GB/T 70	1	screw M5*20
A74	B-001-050001-0	GB/T 41	1	self-locking nut M5
A75	CX-221-660000-A	U221.01.66A	1	valve connecting rod
A76	B-010-060251-0	GB/T 70	1	screw M6*25
A77	B-040-061210-1	GB/T95	1	flat washer φ6*12*1
A78	B-014-080251-0	GB/T 70	1	screw M8*25
A79	B-004-080001-0	GB/T 41	1	Nut 8
A80	B-001-100001-0	GB/T 41	1	self-locking nut M10
A81	C-221-670000-A	U221.01.67A	1	spring
A82	B-010-100551-0	GB/T 70	1	screw M10
A83	B-070-040040-0	4*40	1	pin
A84	C-221-640000-A	U221.01.64A	1	rubber cover
A85	CX-221-630000-A	U221.01.63A	1	pedal connecting rod
A86	B-004-060001-1	GB/T 41	1	nut M6
A87	C-200-380000-0	U200.01.38	1	spring
A88	B-010-060251-0	GB/T 70	1	screw M6*25
A89	B-004-060001-1	GB/T 41	2	nut
A90	B-001-060001-0	GB/T 41	4	self-locking nut M6
A91	B-040-061210-1	GB/T95	4	flat washer φ6*12*1
A92	B-010-060201-0	GB/T 70	4	screw M6*20
A93	C-200-060901-0	U200.01.06.09	1	5-way valve
A94	S-000-012400-0	JB1092	1	O-seal 12*20*4
A95	C-200-061100-0	U200.01.06.11	1	valve cover
A96	B-024-290161-0	GB/T 70	2	tap screw ST2.9*16
A97	C-200-061000-0	U200.01.06.10	5	valve spacer
A98	CX-221-650000-A	U221.01.65A	1	valve pole
A99	S-000-012400-0	JB1092	12	O-seal 12*20*4
A100	CZ-14-006-003		1	complete inflation pedal
A101	C-06-001-002	5*8	1	hose 5*8
A102		U221.01.12A	4	Locking sliders
A103			1	complete rotating union

20. Pneumatic drawing

Pneumatic Drawing 221 + 221A (Air boost)



21. Circuit diagram

