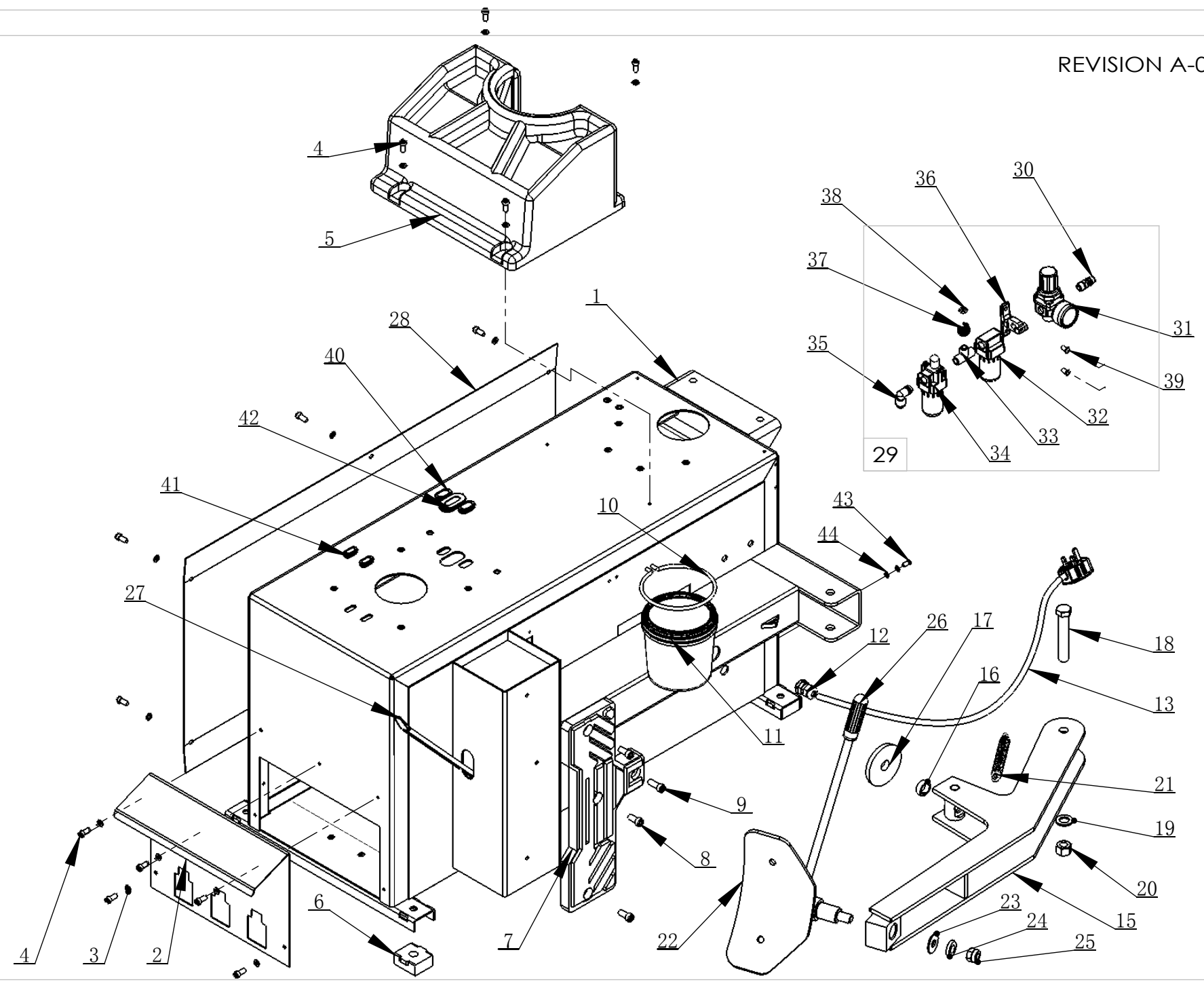
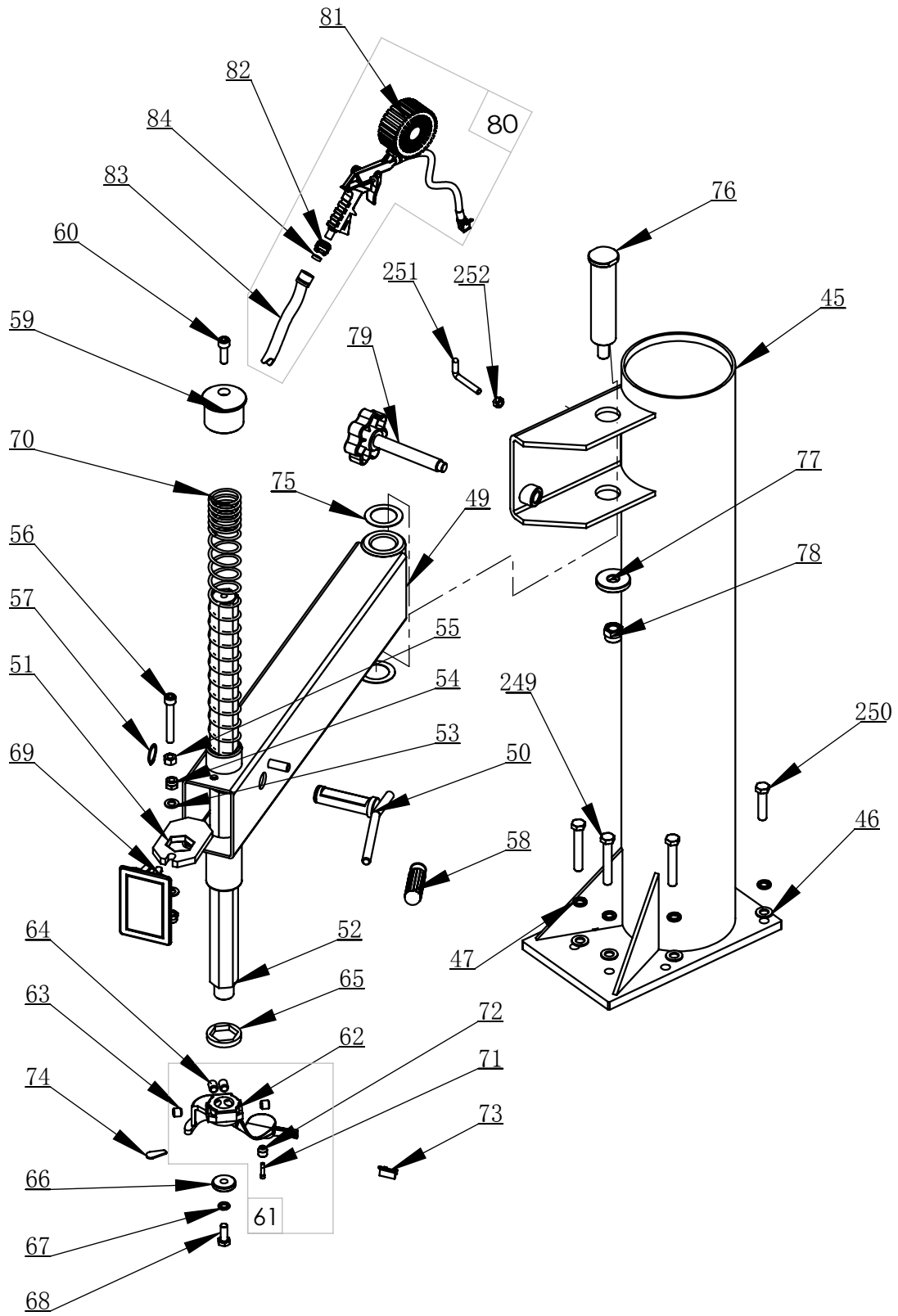
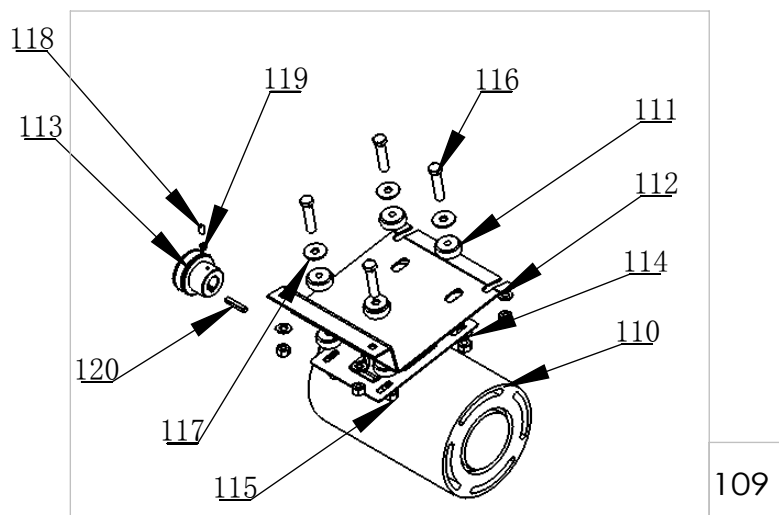
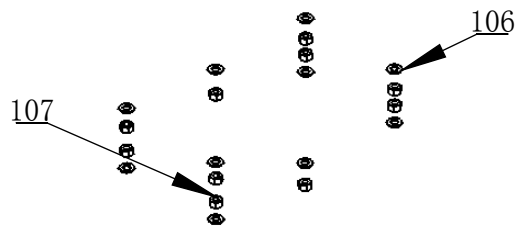
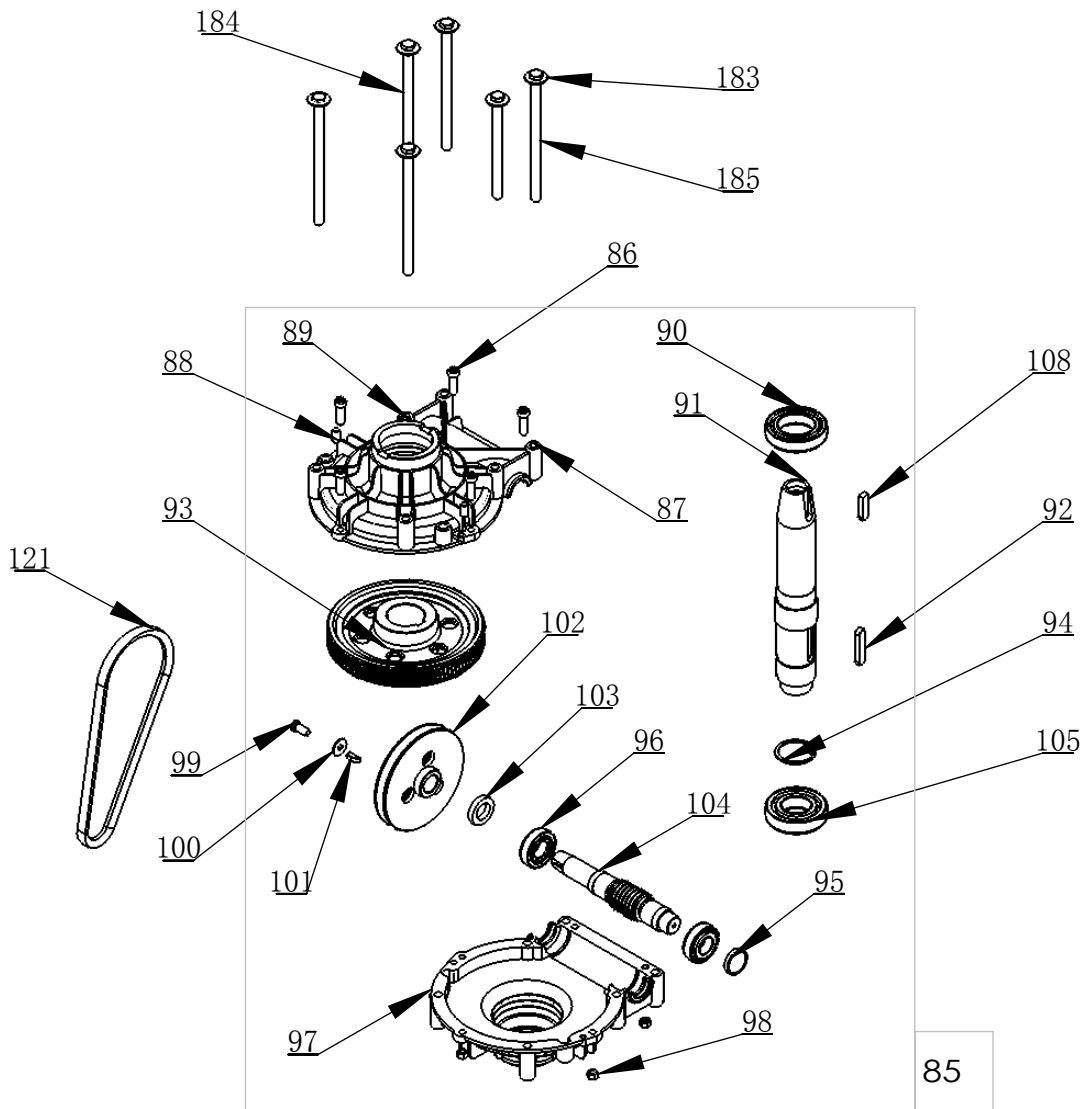


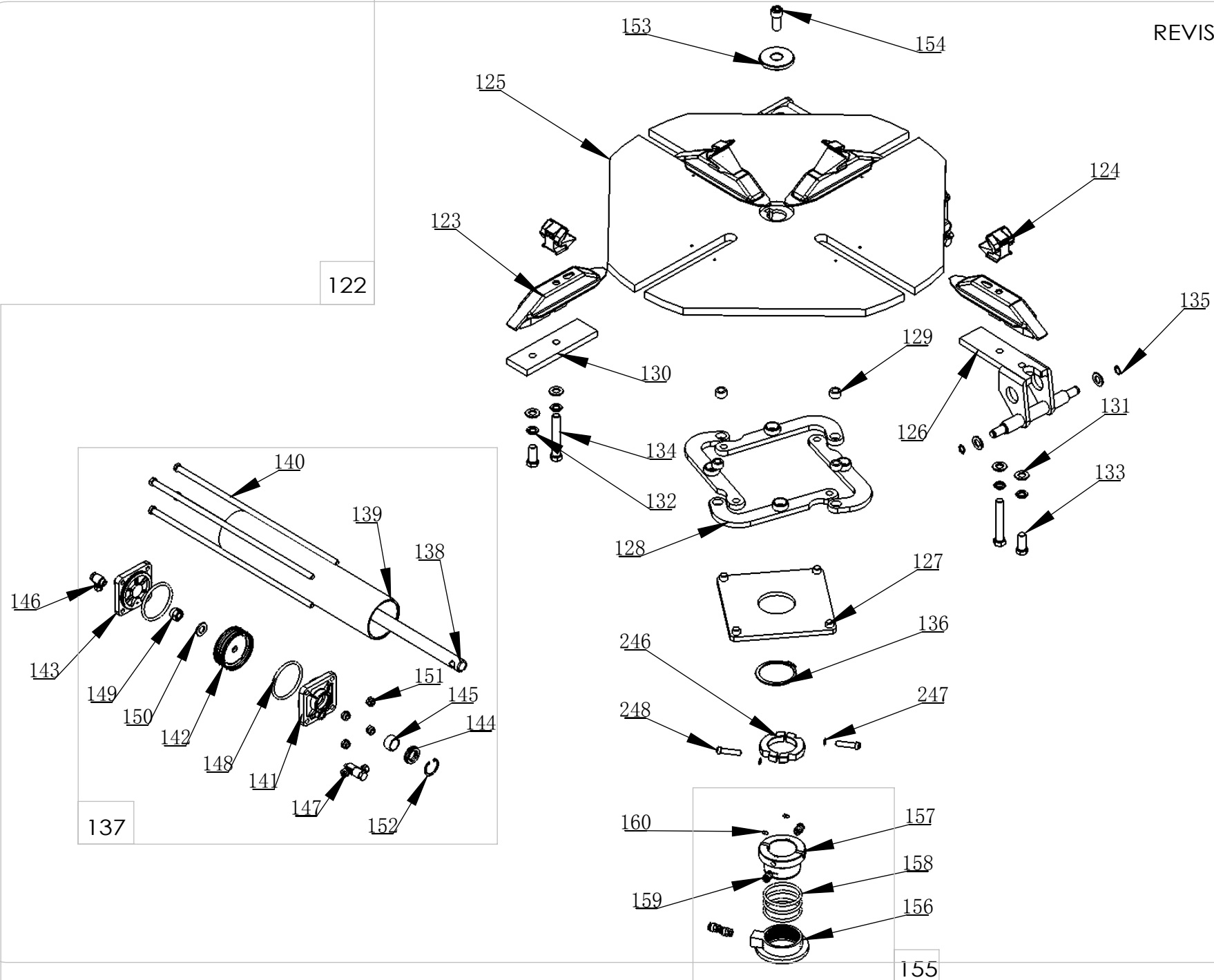
Exploded Drawing

LC890

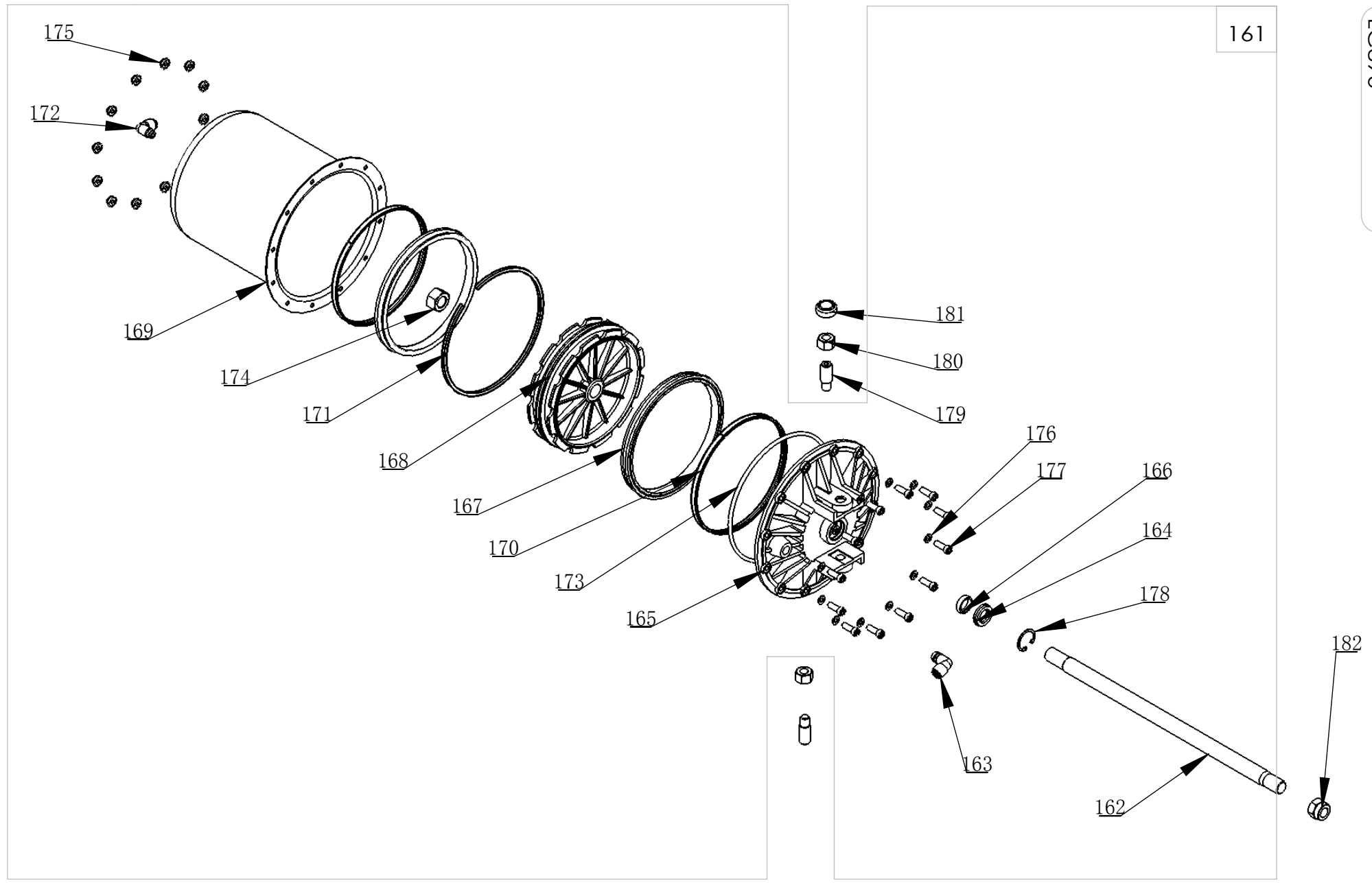


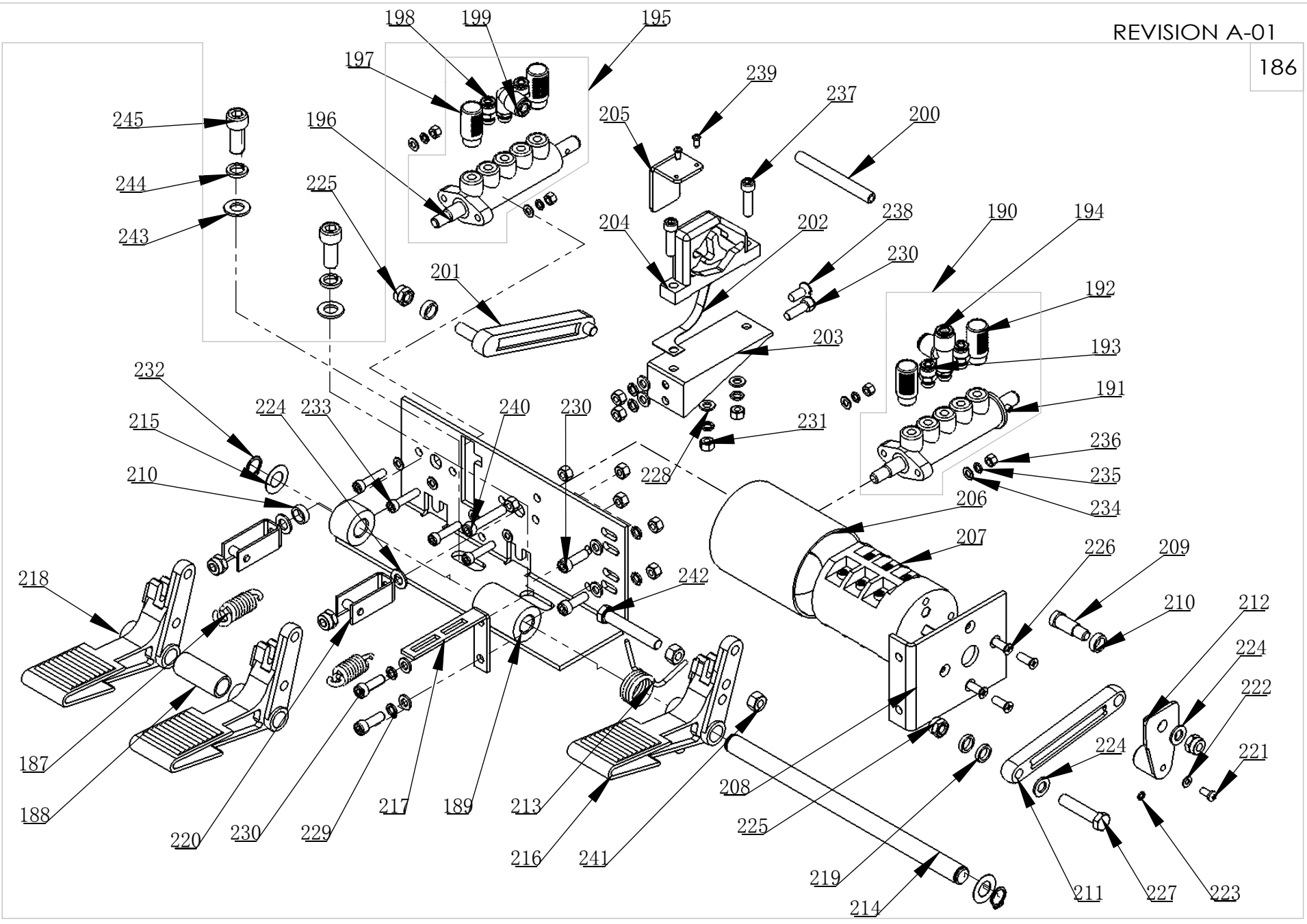






161





ITEM	PART No	DESCRIPTION.	QTY
1	6010032	BODY	1
2	6010037	PROTECTIVE COVER	1
3	5008063	WASHER 6	14
4	5009015	SCREW M6X16	14
5	5502047	TOOL BOX	1
6	5502045	RUBBER FOOT	4
7	5004093	RUBBER PAD PLATE	1
8	5010063	SCREW M8X20	3
9	5010088	SCREW M8X25	1
10	5004092	BRACKET	1
11	5509141	GREASE CONTAINER	1
12	5502049	CABLE CONNECTOR	1
13	5004107	CABLE	1
14	6000309	BEAD BREAKER	1
15	6000357	BEAD BREAKER	1
16	6000344	SLIDE SPACER	1
17	5004073	RUBBER PLATE	1
18	5004014	BOLT M16X100	1
19	5010026	WASHER 16	1
20	5004042	NUT 16	1
21	6000310	SPRING	1
22	6000308	BEAD BREAKER BLADE	1
23	6008977	WASHER	1
24	5010091	WASHER 14	1
25	5010090	NUT M14	1
26	6008091	RUBBER COVER	1
27	5004094	CROWBAR 20 "	1
28	6005013	SIDE PANEL	1
29	5509284	AIR REGULATOR ASSEMBLY	1
30	5004079	AIR SUPPLY CONNECTOR	1
31	5509149	ADJUSTING VALVE	1
32	5004086	WATER CUP	1
33	5004082	TEE R1/4	1
34	5004087	OIL CUP	1
35	5004083	INSERT ELBOW $\Phi 8$, R1/4"	1
36	5004085	BRACKET	1
37	5004075	OPEN NUT	1
38	6000266	RING D13XD7X4	1
39	5006007	SCREW M5X12	2
40	5509154	PLUG C	2
41	5509153	PLUG A	2
42	5509155	PLUG B	1
43	5009093	BOLT M5X12	1
44	5010045	WASHER 5	2
45	6010033	VERTICAL COLUMN	1
46	5010020	WASHER 12	6
47	5010025	WASHER 12	6

ITEM	PART No	DESCRIPTION.	QTY
48	6010034	SWING ARM	1
49	6010040	SWING ARM	1
50	6010042	LOCK HANDLE	1
51	5502053	HEXAGON LOCK PLATE	1
52	6010041	HEXAGON SHAFT	1
53	5509151	WASHER 10	2
54	5008112	NUT M10	2
55	5010004	NUT M10	1
56	5000034	SCREW M10X70	1
57	5002030	CIRCLIP 25	1
58	6008091	RUBBER COVER	1
59	5004200	VERTICAL SHAFT COVER	1
60	5000033	SCREW M10X30	1
61	5509220	DEMOUNTING HEAD ASSEMBLY	1
62	5502123	DEMOUNTING HEAD	1
63	5004021	SCREW M12X12	2
64	5004023	SCREW M12X16	2
65	5004115	SHOCK ABSORBER WASHER	1
66	5004201	PRESS WASHER	1
67	5010006	WASHER 10	1
68	5009146	BOLT M10X25	1
69	5502054	DECORATING COVER	1
70	5502051	VERTICAL SHAFT SPRING	1
71	5004116	ROLLER BOLT	1
72	5004117	ROLLER	1
73	5509015	SHEATH	1
74	5509014	PLASTIC COVER	1
75	6005027	ADJUSTING WASHER	2
76	6010035	VERTICAL SHAFT	1
77	6010036	SHAFT WASHER	1
78	5004215	NUT M16	1
79	5502048	HANDLE WHEEL	1
80	5509174	INFLATING GUN ASSY	1
81	5004098	INFLATING GUN	1
82	5004075	OPEN NUT	1
83	5502124	INFLATION HOSE	1
84	6000266	RING D13XD7X4	1
85	6000351	GEARBOX ASSEMBLY	1
86	5004060	SCREW M8X30	5
87	6000353	GEARBOX TOP	1
88	5004208	PIN 8X20	2
89	5010078	SCREW M16X1.5X15	1
90	5010002	ROLLING BEARING 6010	1
91	6000352	WORM SHAFT	1
92	5009082	PLAIN KEY 12X56	1
93	6000354	WORM	1
94	5010001	CIRCLIP 50	1

ITEM	PART No	DESCRIPTION.	QTY
95	6000355	CAP 40X25X8	1
96	5000015	ROLLING BEARING 30205	2
97	6000356	GEARBOX BASE	1
98	5002060	NUT M8	5
99	5010077	BOLT M8X20	1
100	5009118	WASHER 8	1
101	5002086	PLAIN KEY 6X9X22	1
102	6000275	BELT PULLEY	1
103	5010208	SEALED RING	1
104	6000273	WORM ROD	1
105	5010076	ROLLING BEARING 6208	1
106	5509151	WASHER 10	14
107	5010004	NUT M10	14
108	5006003	PLAIN KEY 12x45	1
109	6009246	MOTOR ASSEMBLY	1
110	5509285	MOTOR AC380V (220V) 50Hz	1
111	6000183	RUBBER WASHER	8
112	6000182	MOTOR SUPPORT	1
113	6009145	MOTOR BELT PULLEY	1
114	5509151	WASHER 10	4
115	5010004	NUT M10	4
116	5010041	BOLT M10X50	4
117	5004005	WASHER 10	4
118	5010232	SCREW M5X16	1
119	5011008	NUT M5	1
120	5010056	PLAIN KEY 6X36	1
121	5004076	BELT A-25	1
122	6009253	TURNTABLE ASSEMBLY	1
123	6000712	SLIDE COVER	4
124	6000107	CLAMP	4
125	6000132	TURNTABLE	1
126	6008961	BRACKET-CYLINDER	2
127	6000105	SQUARE TURNTABLE	1
128	6000135	CONNECTION PLATE	4
129	6000109	SPACER	4
130	6000134	PRESS BOARD	2
131	5010020	WASHER 12	12
132	5010025	WASHER 12	8
133	5006041	BOLT M12X30	4
134	5009128	BOLT M12X83	4
135	5004015	RING 12	4
136	5010030	CIRCLIP 65	1
137	6000050	CYLINDER ASSEMBLY	2
138	5509143	SHAFT-CYLINDER	1
139	5509144	SLEEVE-CYLINDER 70	1
140	5509145	BOLT	4
141	6000004	FRONT COVER	1

ITEM	PART No	DESCRIPTION.	QTY
142	6009143	PISTON-W/WSHR, ASSY	1
143	6000003	REAR COVER	1
144	6000007	SEAL-ROD, CYLINDER	1
145	6000008	BEARING-SLIDE	1
146	6000009	HINGE ELBOW $\Phi 6$ R1/8"	1
147	6000010	HINGE TEE $\Phi 6$ R1/8"	1
148	5010021	O RING 65X2.65	2
149	5010022	NUT M12	1
150	5010020	WASHER 12	1
151	5010092	NUT M8	4
152	5010024	CIRCLIP 30	1
153	6000106	PRESS COVER	1
154	5002054	SCREW M12X30	1
155	6000619	ROTATING UNION	1
156	6000724	AIR GUIDE EXTERNAL COVER	1
157	6000725	AIR GUIDE ROTATION BUSHING	1
158	5010231	RING 60X2.65	3
159	5010060	INSERT FITTING $\Phi 6$, R1/8"	4
160	5002078	SCREW M3X6	4
161	6000278	BEAD BREAKER CYLINDER ASSEMBLY	1
162	6008981	SHAFT-CYLINDER, 445	1
163	5004083	INSERT ELBOW $\Phi 8$, R1/4"	1
164	6000007	SEAL-ROD, CYLINDER	1
165	6000299	CYLINDER COVER	1
166	5010204	GUIDER SPACER	1
167	5509160	Y-RING	2
168	6000279	PISTON	1
169	6000280	CYLINDER BODY	1
170	5509161	CLAMP RING	2
171	5509162	PISTON SUPPORT RING	1
172	5509158	INSERT ELBOW $\Phi 8$, R1/8"	1
173	5010097	O-RING 185x3.55	1
174	5010114	NUT M18X1.5	1
175	5010042	NUT M6	12
176	5008063	WASHER 6	12
177	5004032	SCREW M6X20	12
178	5010105	CIRCLIP 30	1
179	5010205	SCREWS M14X42	2
180	5000086	NUT M14	2
181	5004070	SEALED COVER	1
182	5004111	NUT M18X1.5	1
183	5004005	WASHER 10	6
184	5004004	BOLT M10X160	2
185	5004006	BOLT M10X200	4
186	6000200	PEDAL ASSEMBLY	1
187	6000216	SPRING	2
188	6000208	SPACER	1

