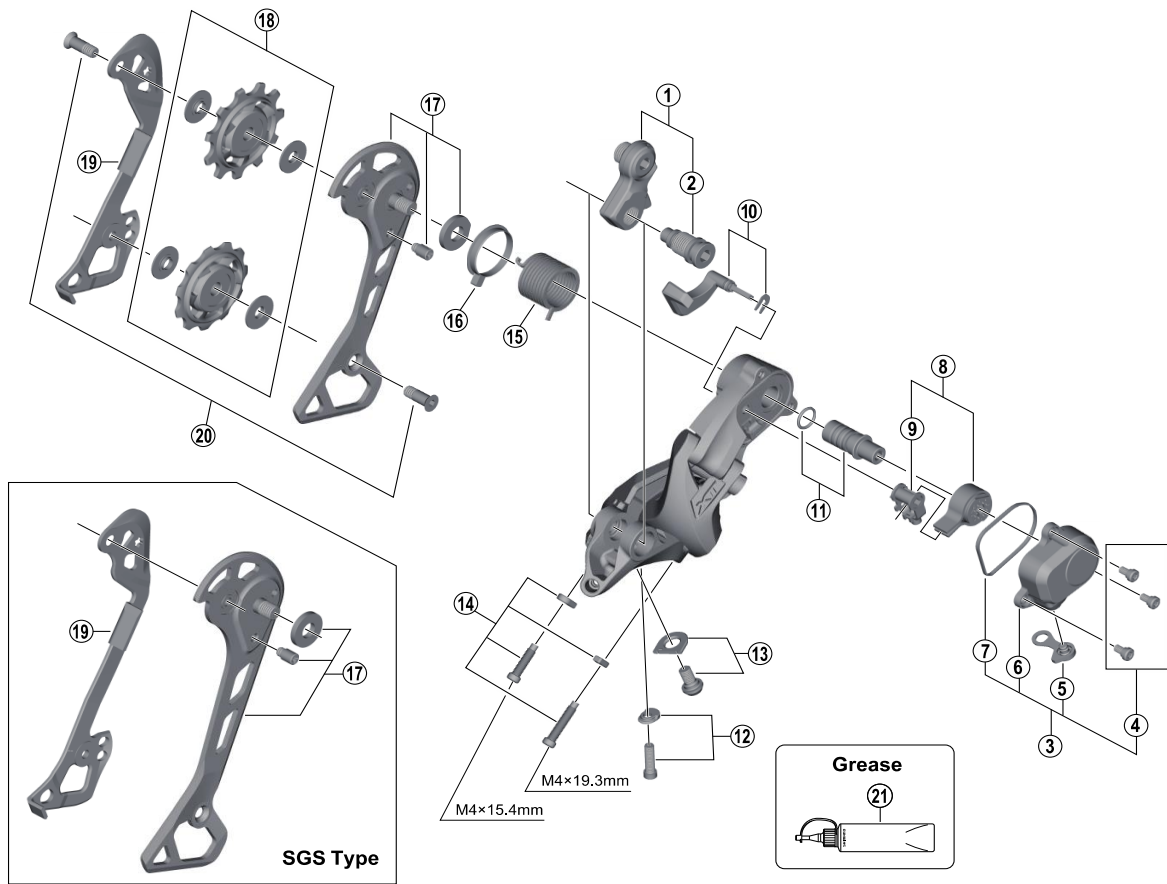


DEORE XT Rear Derailleur (11-speed)  
**RD-M8000** (GS/SGS)



ITEM NO.	SHIMANO CODE NO.	DESCRIPTION	RD-M9000		RD-M786		INTERCHANGEABILITY
1	Y5RT98010	Bracket Axle Unit (for normal type)					
2	Y5RT26000	B-Axle 2 (for Direct Mount type)					
3	Y5RT98020	P-Cover Unit					
4	Y5Y198070	P-Cover Bolt Set (3 pcs.)	A		A		
5	Y5RT30000	P-Cover Cap					
6	Y5RT14000	P-Cover					
7	Y5RT16000	P-Cover Packing					
8	Y5PV98040	Stabilizer Unit	A				
9	Y5PV98050	Cam Unit	A				
10	Y5RT98030	Switch Lever Unit & Fixing Plate					
11	Y5PV98060	P-Axle & O-Ring	A				
12	Y5RT98050	End Adjust Bolt (M4 x 17.4) & Plate					
13	Y5RT98060	Cable Fixing Bolt (M5 x 9.2) & Plate					
14	Y5RT98070	Stroke Adjusting Screws & Plate					
15	Y5PV17000	P-Tension Spring	A				
16	Y5PV24000	P-Seal Ring	A				
17	Y5RT98080	Outer Plate Assembly (GS-Type)					
	Y5RT98090	Outer Plate Assembly (SGS-Type)					
18	Y5RT98120	Guide & Tension Pulley Unit					
19	Y5RT09000	Inner Plate (GS-Type)					
	Y5RT10000	Inner Plate (SGS-Type)					
20	Y5V598140	Pulley Bolt (2 pcs.)				A	
21	Y04120800	Grease for Stabilizer (Net. 100g)	A		A		

A: Same parts.

B: Parts are usable, but differ in materials, appearance, finish, size, etc.

Absence of mark indicates non-interchangeability.

Specifications are subject to change without notice.

Apr.-2015-3859

© Shimano Inc. I

**SHIMANO**