



# simetri

Tank Raf Satış ve Teşhir Ekipmanları Metal  
İnşaat Otomotiv Sanayi ve Ticaret LTD. ŞTİ.



**MERCEDES-BENZ - Arocs**  
**FUEL TANKS / YAKIT TANKLARI**



Capacity (lt)	Height (mm)	Width (mm)	Length (mm)	OEM Code	Code No.
Hacim (lt)	Yükseklik (mm)	Genişlik (mm)	Uzunluk (mm)	Orijinal Kod	Kod No.

**ALUMINUM / ALUMİNYUM**



320	700	650	850	A960.470.5502	N02847
380	700	650	1000	A960.470.5602/3303	B02379
420	700	650	1100	A960.470.5702	B02380
500	700	650	1300	A960.470.5802	N02850
550	700	650	1450	A960.470.5902	B02381
610	700	650	1600	A960.470.6002	B02382



320	700	650	850	A960.470.5502	B00000
-----	-----	-----	-----	---------------	--------

**Combi -Hydraulic Tanks**

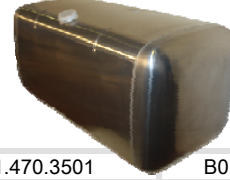
190	700	650	500	Hydraulic tank	B02395
275D/180H	700	650	1200	Combi tank	B02387

**MERCEDES-BENZ**  
**FUEL TANKS / YAKIT TANKLARI**



Capacity (lt)	Height (mm)	Width (mm)	Length (mm)	OEM Code	Code No.
Hacim (lt)	Yükseklik (mm)	Genişlik (mm)	Uzunluk (mm)	Orijinal Kod	Kod No.

**ALUMINUM / ALUMİNYUM**



400	386-420	673-782	1456	A671.470.3501	B01303
400	420	676-779	1456	A671.470.5801	B01641
168	560	599	548	A613.470.4301	B01438
168	560	599	548	A613.470.4301	B01448
246	560	599	798	A613.470.4201	B01439
246	560	599	798	A613.470.4201	B01449
120	560	640	406		B02193
200	560	640	725		B02119
230	560	640	730	A942.470.0101	B02138
300	560	640	945	A375.470.1301-A941.470.0401	B01667
300	560	640	945	A942.470.0201	B01858
300	560	640	945	A375.470.2701	B02073
400	560	640	1250	A375.470.1401	B01668
400	560	640	1250	A942.470.0401	B01831
400	560	640	1250	A942.470.0401	B01987
400	560	640	1250	A375.470.2801	B02074
500	560	640	1550	A375.470.1501	B01669
500	560	640	1550	A942.470.0501	B01855
500	560	640	1550	A931.470.0501	B02004
500	560	640	1550	A375.470.2901	B02075
580	560	640	1820		B02097
590	560	640	1850	A375.470.1601	B01670
590	560	640	1850	A942.470.0601	B01851
590	560	640	1850	A375.470.3001	B02076
190	620	675	500		B01775
250	620	675	700		B02195
190	700	700	500		B01893
280	700	700	620	A942.470.1601	B02406
300	700	700	730	A942.470.1001	B01753
400	700	700	910	A375.470.1801	B01671
400	700	700	910	A942.470.1301	B01749
400	700	700	910	A375.470.3101	B02077
450	700	700	1035	A942.470.1101	B01750
550	700	700	1275	A942.470.1401-A934.470.0301	B01751
650	700	700	1500	A375.470.1701	B01672
650	700	700	1500	A934.470.0401-A942.470.0901	B01752
650	700	700	1500	A375.470.2601	B02078
760	700	700	1750	700.700.1750	B01875
800	700	700	1800	700.700.1800	B02131
980	700	700	2250		B01945

**MERCEDES-BENZ**  
**FUEL TANKS / YAKIT TANKLARI**

Capacity (lt)	Height (mm)	Width (mm)	Length (mm)	OEM Code	Code No.
Hacim (lt)	Yükseklik (mm)	Genişlik (mm)	Uzunluk (mm)	Orijinal Kod	Kod No.

**COMBI / KOMBİ**

**ALUMINUM / ALUMİNYUM**



160H / 240D	560	640	1250		B01929
175H / 280D	560	640	1420		B01949
200D / 100H	560	640	945		B02197
160H / 260D	700	700	980		B02246
180H / 460D	700	700	1500		B02242
180H / 500D	700	700	1570		B02083
190H / 230D	700	700	950		B01941
200H / 350D	700	700	1300		B02241
200H / 250D	700	700	1050		B02178
250D / 200H	700	700	1050		B02096
260D / 160H	700	700	950		B02202
350D / 200H	700	700	1300		B02092
420D / 200H	700	700	1440		B01940
460D / AddB	700	700	1500		N02773
500 / 200	700	700	1610		N00802

**ALUMINUM COATED / ALUMİNYUM KAPLI**



76	197	443-565	895	A671.470.1101	B00242
165	270	711	995	A632.470.3202	B02042
210	295	765	1015	A671.470.1801	B00243
240	295	765	1123	A671.470.1001	B00241
150	400	620	725	A436.470.0101	B01683
400	420	673-782	673	A671.470.6001	B01780
50	429	529	316	A671.470.6101	B01756
295	435	835	950	A632.470.5301	B02044
400	560	640	1250	A941 470 0401-A375.470.1901-0801TR	B01676
480	560	835	1187	A632.470.3301	B02043
155	605	630	490	A370.470.1301	B02037
155	605	630	490	A633.470.1601	B02038
185	605	795	465	A370.470.1402	B02039
185	605	795	465	A633.470.2002	B02040
185	605	795	465	A633.470.2102	B02041
240	625	815	540	A613.470.3201	B01311
200	759	598	548	A613.470.0501	B00240
200	759	598	548	A613.470.1501	B00253
300	759	598	798	A613.470.0401	B00239
300	759	598	798	A613.470.1101	B00252
235	829	578	798	A613.470.3701	B01320
235	829	598	548	A613.470.3601	B01319
230	1050	712	370	A632.470.3701	B01885
330	1050	832	435	A632.470.2802 right.s	B01886
230	1051	711	370	A632.470.4101	B01988
330	1051	831	435	A632.470.3102	B01989
275	244-295	673-784	1494	A671.470.3701	B01310
400	386-420	673-782	1456	A671.470.4001	B01338

**MERCEDES-BENZ**  
**FUEL TANKS / YAKIT TANKLARI**

Capacity (lt)	Height (mm)	Width (mm)	Length (mm)	OEM Code	Code No.
Hacim (lt)	Yükseklik (mm)	Genişlik (mm)	Uzunluk (mm)	Orijinal Kod	Kod No.

**MILD STEEL / ÇELİK (DKP)**

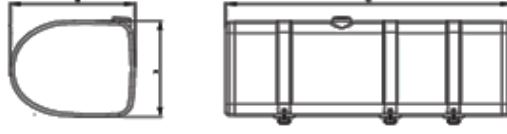


50	193	760	441	A671.470.3401	B01318
76	197	443-565	895	A671.470.0201	B00221
50	243	680	387	A671.470.3201	B01317
240	295	765	1123	A671.470.0801	B00226
100	300	450	860	A371.470.8101	B00237
120	370	570	675	A375.470.0101-0201	B00977
150	400	620	725	A435.470.1401	B01033
150	400	620	725	A435.470.1501	B01461
200	400	620	762	A437.470.0401	B01925
300	430	530	1460	A375.470.2301	B01828
300	430	530	1460		B01871
300	435	765	1123	A671.470.2401	B00282
150	450	580	610	A371.470.7501	B00210
235	450	580	990	A373.470.1801	B00270
200	465	671	720	A373.470.0401	B00267
250	465	671	820	A373.470.8001	B00212
400	510	765	1123	A671.470.2501	B01123
100	540	620	320	A391.470.0001	B01514
200	540	620	620	A387.470.2701	B01487
300	540	620	960	A387.470.1001-1201	B00434
400	540	620	1270	A387.470.0701-A387.470.0901	B00440
400	540	620	1270		B01050
400	540	620	1270	A387.470.0701	B00223
200	560	640	700	A375.547.2110	B01673
230	560	640	725	A375.470.2001	B01674
300	560	640	945	A375.470.2201-A941 470 1101	B01675
300	560	640	945		B01990
300	560	640	945	A941.470.0201-A375.470.0401	B01531
345	560	640	1080	A941.470.0301	N00985
400	560	640	1250	A941.470.0401-A375 470 1901 TR	B01854
400	560	640	1250	A941 470 0401-A375 470 1901 TR	B02016
500	560	640	1560	A941.470.0501	B01998
600	600	680	1500	A620.470.0601	B00433
175	625	670	480	A613.470.3301	B01312
217	759	598	548	A613.170.0101	B00206
300	759	598	798	A613.470.1001	B00250
323	759	598	798	A613.470.0001	B00205
180	895	740	356	A373.470.8901	B00214
200	895	740	415	A373.470.9601	B00274
220	895	740	415	A373.470.9701	B00275
315	895	740	568	A373.470.9201	B00209
315	895	740	568	A373.570.5001	B00271
315	895	740	568	A373.470.8801	B00277
250	234-268	673-782	1456	A671.470.2801	B01154
250	234-268	673-782	1456	A671.470.4801	N00019
400	386-420	673-782	1456	A671.470.3001	B01153
400	386-420	673-782	1456	A671 470 53 01	B02122
200	Ø460		1250	A387.470.1301	B00211
200	Ø460		1250	A371.470.8201	B00281
200	Ø460		1065	A437 470 0002	N00581
200	Ø460		1250	A387.470.1501-A355.470.0101	B00439
200	Ø460		1250	A343.470.0101-A387.470.2501	B01513
300	Ø580		1250	A387.470.1601-1801-1001	B00435
300	Ø580		1250	A387.470.2301-2401	B00436

*The tanks are equivalent to OEM numbers*

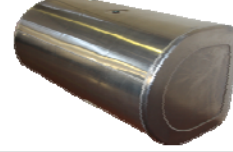


**VOLVO & RENAULT (D-TANK)  
FUEL TANKS / YAKIT TANKLARI**



Capacity (lt)	Height (mm)	Width (mm)	Length (mm)	OEM Code	Code No.
Hacim (lt)	Yükseklik (mm)	Genişlik (mm)	Uzunluk (mm)	Orijinal Kod	Kod No.

**ALUMINUM / ALUMİNYUM**



170	710	690	430	20503502	B02214
210	710	690	530	20503503	B02215
285	710	690	715	24425785	N02810
320	710	690	810	20566795	N02730
330	710	690	830	20503504	B02216
355	710	690	900		B02471
365	710	690	930	20507744	B02240
405	710	690	1030	20503505	B02259
450	710	690	1130	20503506	B02239
490	710	690	1230	20503507	B02217
500	710	690	1260		B02478
530	710	690	1330	20503508	B02218
570	710	690	1430	20503509	B02219
610	710	690	1530	20503510	B02238
650	710	690	1630	20503511	B02220
690	710	690	1730	20503514	B02221
330D / 155H	710	690	1250	Combi	B02301
180H/310D	710	690	1250	Combi	B02301
200	710	690	550	Hydraulic	B02326

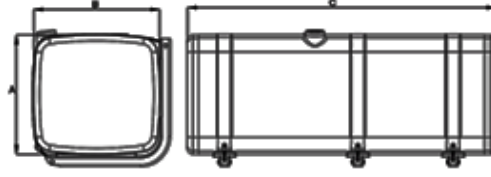


**FUEL CAP / DEPO KAPAĞI**

PLASTIC TANK CAP Ø 80 MM (with lock)	A05493	S 280-17Z
--------------------------------------	--------	-----------



**MAN**  
**FUEL TANKS / YAKIT TANKLARI**



Capacity (lt)	Height (mm)	Width (mm)	Length (mm)	OEM Code	Code No.
Hacim (lt)	Yükseklik (mm)	Genişlik (mm)	Uzunluk (mm)	Orijinal Kod	Kod No.



**ALUMINUM / ALUMİNYUM**

190	620	675	500		B01775
200	620	675	582		B01769
300	620	675	800	81.12201.5469	B01770
400	620	675	968	81.12201.5656/5675	B01095
400	620	675	1070	81.12201.5690-81.12201.5498	B01771
500	620	675	1352	81.12201.5482	B01772
500	620	675	1330	8112201..5657	B02163
600	620	675	1500	81.12201.5664/5686	B01146
600	620	675	1602	81.12201.5500	B01773
600	620	675	1612	52RS027534	B02063
700	620	675	1870	81.12201.5555/5673	B01852
750	620	675	2000	81.12201.5523-2090	B01872
800	620	675	2085	81.12201.6032-5687/5674	B01774
850	620	675	2150	81.12201..5671	



**COMBI / KOMBİ**

120H / 180D	620	675	820		B02118
200H / 585D	620	670	2112		B02093
240D / 160B	620	675	1070		B01860
240D / 160H	620	675	1070		B01859
240D / 160H	620	675	1070		B02130
300D / 100H	620	675	1070		B01896
350D / 150H	620	675	1350		B02252
390D / 200H	620	675	1600	81.12201.5697	B01950
580D / 200H	620	675	2102		B01946
265 / 135	620	675	1050		B01680
300 / 100	620	675	1050		B01681
400 / 180	620	675	1500		B01682

**MAN**  
**FUEL TANKS / YAKIT TANKLARI**

Capacity (lt)	Height (mm)	Width (mm)	Length (mm)	OEM Code	Code No.
Hacim (lt)	Yükseklik (mm)	Genişlik (mm)	Uzunluk (mm)	Orijinal Kod	Kod No.

**ALUMINUM COATED / ALUMİNYUM KAPLI**



30	555-605	780	105	83.12201.5545	B01805
67	282-330	715	360	83.12201.0532	B01350
67	282-330	715	360	83.12201.0533	B01351
67	282-330	715	360	83.12201.0540	B01431
125	555-605	780	315	81.12201.5792	B01806
125	555-605	780	315	81.12201.5793	B01807
125	565-605	780	315	83.12201.5548	B01868
125	555-605	780	315	83.A5705.0101-36-12201-5030	B02162
175	620	675	475	TV2000-047	B01060
175	555-605	780	490	81.12201.5794	B01808
175	555-605	780	490	81.12201.5795	B01809
220	620	675	585	83.12201.0525	B00834
233	282-330	715	1150	83.12201.0541	B01352
233	282-330	715	1150	83.12201.0535	B01353
300	515	615	1050	83.12201.5534	B01087
300	620	675	800	83.12201.0537	B01418
300	740	332	1300	83.12201.5547	B01869
300	855	782	573	81.12201.5808	B01748
300	980	714	460	83.12201.5546	B01830
335	620	675	880	83.12201.0539	B01430
400	620	675	1050	83.12201.0526	B00794
400	620	675	1050	83.12201.0524	B00835
400	620	675	1050	83.12201.0531	B01349
500	620	675	1335	83.12201.0536	B01374
300	620	675	800	81.12201.6111-0523	B00833

**MILD STEEL / ÇELİK (DKP)**



90	300	450	750	83.12201.6001	B00785
100	620	675	280		B01799
130	620	675	360		B01798
150	332	740	650	83.12201.5027	B00730
150	332	740	650	83.12201.5539	B00736
150	350	615	800	81.12201.6176 (UK)	BO2302
150	350	615	800	81.12201.6176	B02300
150	350	615	800	81.12201.5858	
180	370	570	950	83.12201.6501	B02312
180	620	675	500		B01800
185	665	610	545	83.12201.0542	B01441
185	665	610	545	83.12201.0548	B01565
200	350	615	1050	81.12201.6206-5819 (UK)	B02303
200	350	615	1050	81.12201.6206	B02306
200	370	550	1200		B00813
230	515	615	800	81.12201.6123	B01180



**MAN**  
**FUEL TANKS / YAKIT TANKLARI**

Capacity (lt)	Height (mm)	Width (mm)	Length (mm)	OEM Code	Code No.
Hacim (lt)	Yükseklik (mm)	Genişlik (mm)	Uzunluk (mm)	Orijinal Kod	Kod No.



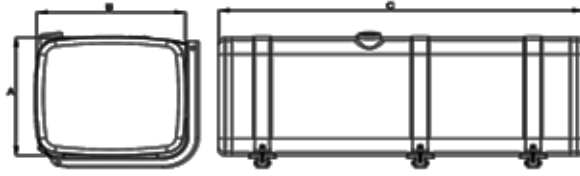
**MILD STEEL / ÇELİK (DKP)**

233	282-330	715	1150	83.12201.0544	B01561
233	282-330	715	1150	83.12201.0545	B01562
233	282-330	715	1150	83.12201.0553	B01738
240	314-400	1050	600	83.12200.6016	B00589
240	314-400	1050	600	83.12201.5508	B00590
250	Ø580		1000	83.12201.5529	B00578
280	510	700	840	83.12201.5020	B00593
300	332	740	1300	83.12201.5027	B00579
300	332	740	1300	83.12201.5025	B00580
300	332	740	1300	83.12201.5026	B00581
300	332	740	1300	83.12201.5538	B00737
300	332	740	1300	83.12201.5536	B01059
300	332	740	1300	83.12201.5540	B01549
300	332	740	1300	81.12201.5779	B01723
300	515	615	1050		B00443
300	515	615	1050	81.12201.5552	B01179
300	515	615	1050	81.12201.6129	B02125
300	620	675	800	81.12200.6305-81.12201.6111	B00441
300	620	675	800	83.12201.5531	B00573
300	855	625	667	83.12201.5804	B01624
300	855	782	573	83.12201.0552	B01640
300	Ø580		1200	83.12201.5520	B00576
300	Ø580		1200	83.12201.6001	B00795
345	505	700	1040		B02274
345	505	700	1040		N00603
400	620	675	1050	81.12201.5533	B00572
400	620	675	1050	83.12201.5537	B00748
400	620	675	1050	83.12201.0527	B01056
400	620	675	1050	81.12201.0530	B01157
400	620	675	1050	81.12201.5554	B01178
400	620	675	1050	83.12201.5541	B01550
400	620	675	1050	81.12201.6117	B02139
400	620	675	800	81.12201.6111	B02140
510	505	700	1500		B02182
510	505	700	1500		B02273
570	620	675	1500		B00630
700	600	680	1800		B01634
300	515	615	1050	81.12200.6313-81.12201.6129-6584	B00438
400	620	675	1050	81.12200.6301-81.12201.6117	B00437

**COMBI MILD STEEL / KOMBİ ÇELİK (DKP)**

265 / 135	620	675	1050		B01680
300 / 100	620	675	1050		B01681
400 / 180	620	675	1500		B01682

**SCANIA**  
**FUEL TANKS / YAKIT TANKLARI**



Capacity (lt)	Height (mm)	Width (mm)	Length (mm)	OEM Code	Code No.
Hacim (lt)	Yükseklik (mm)	Genişlik (mm)	Uzunluk (mm)	Orijinal Kod	Kod No.

**ALUMINUM / ALUMİNYUM**



200	670	700	505	175 7774 / 151 7303	B02257
250	670	700	625	186 3088	B02405
300	670	700	735	151 7304 / 187 1188	B02256
350	670	700	865	151 7305 / 187 1189	B02255
400	670	700	1014	154 4778 / 187 8319	B02254
470	670	700	1190	191 8526	B02383
500	670	700	1265	151 7307 / 187 1190/ 142 3689	B02253
570	670	700	1392	191 8527/136 9744	B02384
600	670	700	1515	151 7308 / 187 1191/ 142 3690	B02266
625	670	700	1542	191 8528	B02385
700	670	700	1655	197 1192 / 151 7309/ 142 3691	B02258
735	670	700	1750		



**FUEL CAP / DEPO KAPAĞI**

PLASTIC TANK CAP Ø 80 MM (with lock)	A05491	S 280-13Z
--------------------------------------	--------	-----------



**FORD**  
**FUEL TANKS / YAKIT TANKLARI**

Capacity (lt)	Height (mm)	Width (mm)	Length (mm)	OEM Code	Code No.
Hacim (lt)	Yükseklik (mm)	Genişlik (mm)	Uzunluk (mm)	Orijinal Kod	Kod No.

**ALUMINUM / ALUMİNYUM**

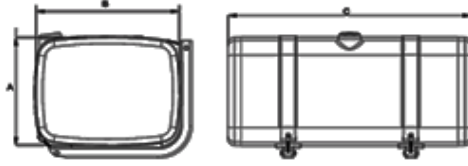


280	480	670	1034	DC46-9002-HA	B02207
315	480	670	1172	DC46-9002-NB	B02275
315	480	670	1173	DC46-9002-NA	B02208
350	700	700	848	CC46-9002-CB	B02278
650	700	700	1508	9C46-9002-KC	B02057
420	480	670	1477	DC46-9002-GA	B02206
435	700	700	1038	DC46-9002-DA	B02166
435	700	700	1038	DC46-9002-DB	B02280
550	700	700	1283	CC46-9002-AB	B02277
650	700	700	1508	DC46-9002-CB	B02165
650	700	700	1508	DC46-9002-EB	B02181
650	700	700	1508	DC46-9002-FA	B02198
650	700	700	1508	9C46-9002-AD	B02276
650	700	700	1508	DC46-9002-EC	B02279
650	700	700	1508	DC46-9002-CA	B02281

**ALUMINUM COATED / ALUMİNYUM KAPLI**

250	480	670	890	DC46-9002-JA	B02267
315	465	671	1092	6C46-9002-DD	B02054
315	480	670	1178	BC46-9002-BA	B02173
315	480	670	1178	BC46-9002-CA	B02174
315	480	670	1178	BC46-9002-FA	B02175
315	480	670	1178	BC46-9002-EA	B02176
315	480	670	1178	BC46-9002-DA	B02177
315	480	670	1178	BC46-9002-BB	B02270
315	480	670	1178	BC46-9002-CB	B02271
315	480	670	1178	BC46-9002-AB	B02272
315	625	670	826	6C46-9002-FD	B02053
520	625	670	1300	6C46-9002-ED	B02055

## FUEL TANKS / YAKIT TANKLARI



Capacity (lt)	Height (mm)	Width (mm)	Length (mm)	OEM Code	Code No.
Hacim (lt)	Yükseklik (mm)	Genişlik (mm)	Uzunluk (mm)	Orijinal Kod	Kod No.

### ALUMINUM / ALUMİNYUM

#### 560 x 599 mm



168	560	599	548	A613.470.4301	B01438
168	560	599	548	A613.470.4301	B01448
246	560	599	798	A613.470.4201	B01439
246	560	599	798	A613.470.4201	B01449

#### 560 x 640 mm



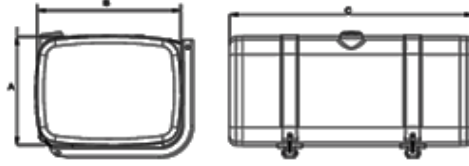
120	560	640	406	Actros	B02193
200	560	640	725	Actros	B02119
230	560	640	730	Actros	B02138
300	560	640	945	A375.470.1301	B01667
300	560	640	945	A942.470.0201	B01858
300	560	640	945	A375.470.2701	B02073
400	560	640	1250	A375.470.1401	B01668
400	560	640	1250	A942.470.0401	B01831
400	560	640	1250	A942.470.0401	B01987
400	560	640	1250	A375.470.2801	B02074
500	560	640	1550	A375.470.1501	B01669
500	560	640	1550		B01699
500	560	640	1550	A942.470.0501	B01855
500	560	640	1550	Actros	B02004
500	560	640	1550	A375.470.2901	B02075
580	560	640	1820	Actros	B02097
590	560	640	1850	A375.470.1601	B01670
590	560	640	1850	A942.470.0601	B01851
590	560	640	1850	A375.470.3001	B02076

#### 620 x 675 mm



190	620	675	500	MAN/Mercedes	B01775
200	620	675	582	MAN	B01769
250	620	675	700	Mercedes - Actros	B02195
300	620	675	800	81.12201.5469	B01770
400	620	675	968	MAN	B01095
400	620	675	1070	81.12201.5490 - 5498 - 5656	B01771
500	620	675	1352	81.12201.5482 - 1097	B01772
500	620	675	1330	81.12201.5664 - 5657	B02163
600	620	675	1602	81.12201.5500	B01146/B01773
700	620	675	1870	81.12201.5555	B01852
750	620	675	2000	81.12201.5523 - 2090	B01872
800	620	675	2085	81.12201.6032	B01774
805	620	675	2105		B02392

## FUEL TANKS / YAKIT TANKLARI



Capacity (lt)	Height (mm)	Width (mm)	Length (mm)	OEM Code	Code No.
Hacim (lt)	Yükseklik (mm)	Genişlik (mm)	Uzunluk (mm)	Orijinal Kod	Kod No.

### ALUMINUM / ALUMİNYUM



#### 700 x 700 mm

190	700	700	500	Mercedes - Actros	B01893
280	700	700	620		
300	700	700	730		B01753
400	700	700	910	A375.470.1801	B01671
400	700	700	1035	A375.470.1301	B01749
400	700	700	910	A375.470.3101	B02077
400	700	700	910	A375.470.3101	B02077
450	700	700	1210	Actros	B01750
500	700	700	1275		B01755
550	700	700	1300	A942.470.1401 - 0301	B01751
570	700	700	1500		B02127
650	700	700	1500	A375.470.1701	B01672
650	700	700	1500	A934.470.0401-0901	B01752
650	700	700	1508	9C.46.9002AB Ford	B02000
650	700	700	1508	DC.40.902FA Ford	B02198
650	700	700	1500	A375.470.2601	B02078
650	700	700	1500	A375.470.2601	B02078
700	700	700	1660	151.7309 Scania	B01849
750	700	700	1700	MAN/Volvo/Scania	B01848
760	700	700	1750	MAN/Volvo/Scania	B01875
800	700	700	1800	MAN/Volvo/Scania	B02131
900	700	700	2040	MAN/Volvo/Scania	B01969
980	700	700	2250	MAN/Volvo/Scania	B01981/B01945

### OTHERS / DİĞER



35	195	257	814	W200SPT	B02068
45	293	279	744	W10TR6	B01658
68	482	400	382	TO160124Y	B01625
170	565	417	775	61705-98100-74	B01628
182	665	400	750	HD160195	B01876
185	625	417	775	61705-95180-77	B01630
185	625	417	775	61705-87180-77	B01728
200	417	565	830	61705-95180-78	B01631
225	590	500	770	TO160125Y	B01626
372	417	565	830	61705-98100-75	B01629
372	692	700	807	T0160155	B01760
400	420	676-779	1456	A671.470.5801	B01641
400	782	420	1456	A671.470.3501	B01303
600	600	650	1500		B00734

Capacity (lt)	Height (mm)	Width (mm)	Length (mm)	OEM Code	Code No.
Hacim (lt)	Yükseklik (mm)	Genişlik (mm)	Uzunluk (mm)	Orijinal Kod	Kod No.

**MILD STEEL / ÇELİK (DKP)**

**300 x 450 mm**



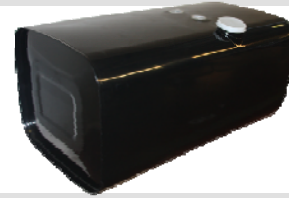
60	300	450	500	251300000-35NC	B00534
60	300	450	500	251300000B-M23-50NB	B00535
60	300	450	500		B01754
80	300	450	660	11062.85.12	B00531
80	300	450	660	251300000A	B00533
90	300	450	750	83.12201.6001	B00785
90	300	450	750		B00812
90	300	450	750		B01039
100	300	450	860	A371.470.8101	B00237
100	300	450	860	TM160128	B00305
100	300	450	860	TM160147	B00306
100	300	450	860	MC123538A	B00308
100	300	450	800	17132-85.14	B00712
100	300	450	860	TK317424	B00742
113	300	450	930	TM160110	B01019
113	300	450	930	TM160109	B01020
113	300	450	930	TM160111	B01081
113	300	450	930	TM160112	B01082
120	300	450	1000	11062A	B00549
120	300	450	975	TM160148	B01141

**332 x 740 mm**



150	332	740	650	83.12201.5027	B00730
150	332	740	650	83.12201.5539 bus	B00736
300	332	740	1300	83.12201.5027	B00579
300	332	740	1300	83.12201.5025	B00580
300	332	740	1300	83.12201.5026	B00581
300	332	740	1300	83.12201.5538	B00737
300	332	740	1300	83.12201.5536	B01059
300	332	740	1300	83.12201.5540	B01549
300	332	740	1300	81.12201.5779	B01723

**430 x 530 mm**



150	430	530	1460	A375.470.2301	B01828
200	430	530	980	Universal	B00444
200	430	530	980	034 100 0041	B00814
200	430	530	980	4305300980	B01534
300	430	530	1460		B00998
300	430	530	1460	Universal	B00445
300	430	530	1460	Iveco- Mercedes	B01871



Capacity (lt)	Height (mm)	Width (mm)	Length (mm)	OEM Code	Code No.
Hacim (lt)	Yükseklik (mm)	Genişlik (mm)	Uzunluk (mm)	Orijinal Kod	Kod No.

**MILD STEEL / ÇELİK (DKP)**

**540 x 620 mm**



100	540	620	320	A391.470.0001	B01514
200	540	620	620	A387.470.2701	B01487
300	540	620	960	A387.470.1001 - 1201	B00434
400	540	620	1270	Mercedes	B01050
400	540	620	1270	A387.470.0701 - 0901	B00440
400	540	620	1270	A387.470.0701	B00223

**560 x 640 mm**



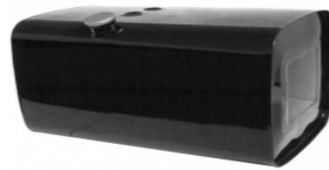
200	560	640	700	A375.547.2110	B01673
230	560	640	725	A375.470.2001	B01674
300	560	640	945	A941.470.0201 - A375.470.0401	B01531
300	560	640	945	A375.470.2201 - A941.470.1101	B01675
300	560	640	945		B01990
345	560	640	1080	A941.470.0301	N00985
400	560	640	1250	A941.470.0401 - A375.470.1901 TD	B01854
400	560	640	1250	A941.470.0401 - A375.470.1901 TD	B02016
500	560	640	1560	A941.470.0501	B01998

**513 x 563 mm**



300	513	563	1200	28762-T (25944-T) (13810-T)	B00310
300	513	563	1200	28763-T	B00375
300	513	563	1200	28410-T	B01080
375	513	563	1500	23415-T	B00378

**515 x 615 mm**



230	515	615	800	81.12201.6123	B01180
300	515	615	1050	MAN	B00443
300	515	615	1050	81.12200.6313-01.6129	B00438
300	515	615	1050	81.12201.5552	B01179
300	515	615	1050	81.12201.6129	B02125

**480 x 650 mm**

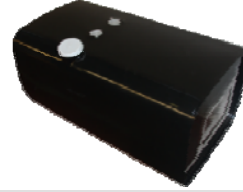


200	480	650	650	42074079	B01536
300	480	650	1050	9847 3999 EB50-7226	B01106
300	480	650	1000		B02133
300	480	650	1000	4209 2488 EB50-7226	B02132

Capacity (lt)	Height (mm)	Width (mm)	Length (mm)	OEM Code	Code No.
Hacim (lt)	Yükseklik (mm)	Genişlik (mm)	Uzunluk (mm)	Orijinal Kod	Kod No.

**MILD STEEL / ÇELİK (DKP)**

**510 x 700mm**



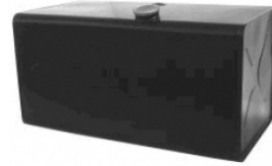
280	510	700	840	83.12201.5020	B00593
345	510	700	1040		N00603
510	510	700	1500		B02182

**580 x 450mm**



121	580	450	526	TV160101	B01369
121	580	450	526	TV160102	B01370
182	580	450	770		B01171

**600 x 650mm**



400	600	650	1150		B00697
400	600	650	1150		B00815
400	600	650	1150	6006501150	B01535
600	600	650	1500		B00733

**600 x 680mm**



200	600	680	550	42018383	B01853
600	600	680	1500	A620.470.0601	B00433
700	600	680	1800	MAN	B01634

**620 x 675mm**



300	620	675	800	81.12200.6305 - 81.12201.6111	B00441
300	620	675	800	83.12201.5531	B00573
300	620	675	800	81.12201.6111	B02140
400	620	675	1050	81.12200.6301 - 81.12201.6117	B00437
400	620	675	1050	81.12201.5533	B00572
400	620	675	1050	83.12201.5537	B00748
400	620	675	1050	83.12201.0527	B01056
400	620	675	1050	81.12201.0530	B01157
400	620	675	1050	81.12201.5554	B01178
400	620	675	1050	83.12201.5541	B01550
400	620	675	1050	81.12201.6117	B02139
570	620	675	1500		B00630

Capacity (lt)	Height (mm)	Width (mm)	Length (mm)	OEM Code	Code No.
Hacim (lt)	Yükseklik (mm)	Genişlik (mm)	Uzunluk (mm)	Orijinal Kod	Kod No.

### MILD STEEL / ÇELİK (DKP)

759 x 598mm



217	759	598	548	A613.170.0101	B00206
300	759	598	798	A613.470.1001	B00250
323	759	598	798	A613.470.0001	B00205

895 x 740mm



180	895	740	356	A373.470.8901	B00214
200	895	740	415	A373.470.9601	B00274
220	895	740	415	A373.470.9701	B00275
315	895	740	568	A373.470.9201	B00209
315	895	740	568	A373.570.5001	B00271
315	895	740	568	A373.470.8801	B00277

### CYLINDRICAL / SİLİNDİRİK



160	400 Ø		1300	A016.950.000	B01733
150	460 Ø		1065	A437.470.0002	N02061
200	460 Ø		1250	A387.470.1301	B00211
200	460 Ø		1250	A371.470.820	B00281
200	460 Ø		1250	A387.470.1601 - A355.470.0101	B00439
200	460 Ø		1250		B01003
200	460 Ø		1250	A343.470.0101 - A487.470.2501	B01513
250	580 Ø		1000	83.12201.5529	B00578
300	580 Ø		1200	83.12201.6001	B00795
300	580 Ø		1200	83.12201.5520	B00576
300	580 Ø		1250	A387.470.1601 - 1801 - 2401	B00436

### OTHERS / DİĞER



13	110	329	535		B00989
15	110	359	535		B01036
15	262	164	418	5020045	B01445
50	193	760	441	A671.470.3401	B01318
50	243	680	387	A671.470.3201	B01317
50	283	343	500	CHRYSLER	B00420
60	282	342	720	41009426	B00411
70	268	410	744	IVECO	B01913
76	197	443 / 565	895	A671.470.0201	B00221
77	283	413	750	MK256319B	B00817
80	343	383	1000		B00759
100	282	387	1000	MK600254ZY	B01822

Capacity (lt)	Height (mm)	Width (mm)	Length (mm)	OEM Code	Code No.
Hacim (lt)	Yükseklik (mm)	Genişlik (mm)	Uzunluk (mm)	Orijinal Kod	Kod No.

**MILD STEEL / ÇELİK (DKP)**

**OTHERS / DİĞER**



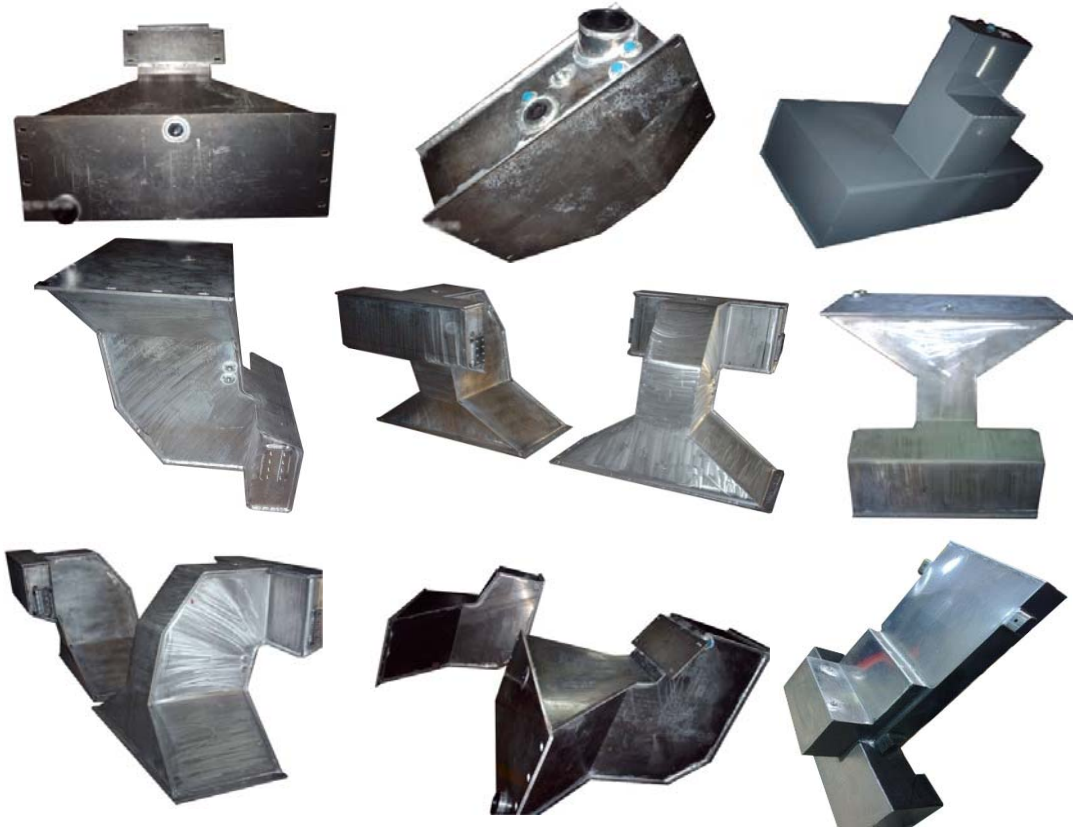
100	282	387	1000	MK626916Y	B02009
115	560	366	600	14885KD 50-7239	B01910
115	650	700	260		B01796
120	300	450	975	TM160152	B01309
120	370	570	675	A375.470.0101 - 0201	B00977
129	660	710	300		B01797
135	540	617	450		B01573
140	340	489	900		B01966
145	340	489	940		B01187
150	195	755	1100	Mitsubishi Temsa	B01528
150	400	620	725	A435.470.1401	B01033
150	450	580	610	A371.470.7501	B00210
175	625	670	480	A613.470.3301	B01312
180	370	570	950	83.12201.6501	B00588
180	418	465	1000	41008692 AS 900	B00412
184	788	478	540	TU160120A	B00818
185	665	610	545	83.12201.0542	B01441
185	665	610	545	83.12201.0548	B01565
200	370	550	1200	MAN	B00813
200	370	550	1000	4785047	B01018
200	396	596	1004	MC 123620 B	B00776
200	400	620	762	A437.470.0401	B01925
200	465	671	720	A373.470.0401	B00267
200	650	700	450		B01795
206	425	638	836	DENNİS	B01794
210	620	540	526	TV160100	B01368
233	282-330	715	1150	83.12201.0544	B01561
233	282-330	715	1150	83.12201.0545	B01562
233	282-330	715	1150	83.12201.0553	B01738
235	450	580	990	A373.470.1801	B00270
240	295	765	1123	A671.470.0801	B00226
240	370	550	1200	100072	B00442
240	400	600	1050	83.12200.6016	B00589
240	600	700	1050	83.12201.5508	B00590
242	788	478	695	TU160121A	B00816
250	268	1456	673-782	A671.470.2801	B01154
250	465	671	820	A373.470.8001	B00212
300	435	765	1123	A 671.470.2401	B00282
300	855	625	667	83.12201.0550	B01624
300	855	782	573	83.12201.0552	B01640
400	510	765	1123	A671.470.2501	B01123
400	664	714	930	6507000930	B01537
400	386-420	673-782	1456	A671.470.3001	B01153

## LAND ROVER PARTS / PARÇALARI

	Order No. Sipariş No.	Products Ürünler	OEM Code Orijinal Kod	Capacity (lt) Hacim (lt)
	B01331	Fuel Tank	552176 BR1350	45
	B01612	Fuel Tank	BHL108437	45
	B00995	Fuel Tank Series-IIA/III	552174/5 BR1885	50
	B01105	Fuel Tank	NTC-2088 BR0802 / ESR2242	60
	B01118	Fuel Tank	NRC9225 BR9225	60
	B00996	Fuel Tank Series-III	599234 BR1024	68
	B01436	Fuel Tank Series-III	599233	68
	B00805	Fuel Tank	NTC2017-LD	80
	B00808	Fuel Tank B-Type	ESR2000 NTC2017-LD	80
	B00809	Fuel Tank C-Type	NTC2017-LD	80
	B00811	Fuel Tank A-Type	NTC2017-LD	80
	B01437	Fuel Tank	ESR2243 WFE000190	80
	B01305	Fuel Tank C-Type	NRC9515	80
	B01546	Fuel Tank	NTC 2017-LD	80
	B02149	Fuel Tank	ESR2000	80
	N00043	Fuel Tank	BHL101167	80
	B01332	Fuel Tank	BR3562	85
	B01530	Fuel Tank	ESR4132-LD BHL104277	110
	B00768	Dry Air Cleaner unit	ESR2102LD	
	B01140	Wing Top Al-protector	BR113	
	B01088	Right Step		
	B01096	Left Step		
	B01662	Raised Air Intake	NCR6920 DA2225-BHL106212	
	A01701	Lamp guard	BR1645 MRC316P	
		F.Bumper	NTC-4657 DA2054	
	A00743	Metal stone guard	ESR2204	
				
				
				

*The tanks are equivalent to OEM numbers*

## Tanks With Other Forms / Değişik Formda Tanklar



## WATER TANKS / SU TANKLARI



## ADD-BLUE TANKS / ÜRE TANKLARI



*The tanks are equivalent to OEM numbers*



## FUEL CAPS / DEPO KAPAĞI

Caps comes with diameters of Ø 60 - 80 - 100 mm with locks or without locks and can be made in metallic or plastics.

Depo kapakları Ø 60 - 80 - 100 mm ölçülerinde kilitli veya kilitsiz olarak, metalik veya plastik kaplı olarak üretilmektedir.



## FILLER NECKS / DOLUM BOĞAZLARI

Filler necks can be made with diameter of Ø 60 - 80 - 100 mm with various lengths and made in Aluminum, Galvanized Steel and Mild Steel.

Dolum boğazları Ø 60 - 80 - 100 mm çaplarında olup Alüminyum, Çelik ve Galvanizli olarak yapılmaktadır.



## ANTI-THEFT

These devices are in diameter of Ø 80 - 100 mm and made in Aluminum / Galvanized Steel / Steel.

Dolum boğazına takılan mazot hırsızlığı önleyici Ø 80 - 100 mm çaplarında olup Alüminyum, çelik ve galvanizli olarak üretilmektedir.



## TANK BAYONET



## FILTER & SIGNON / FİLTRE & SİGLON



## SENDER UNITS / EMİŞ-DÖNÜŞ BORU KOMPLESİ



## VENTİL / VENTİL



## BRACKETS & STRAPS / AYAK & KUŞAKLAR

These brackets and straps are suitable for our Aluminum and Steel tanks.

Ayak ve Kuşaklarımız ürettiğimiz Alüminyum ve Çelik depolarımıza uygundur.



## BUMPERS / TAMPONLAR



*The tanks are equivalent to OEM numbers*



# simetri

Tank Raf Satış ve Teşhir Ekipmanları Metal  
İnşaat Otomotiv Sanayi ve Ticaret LTD. ŞTİ.



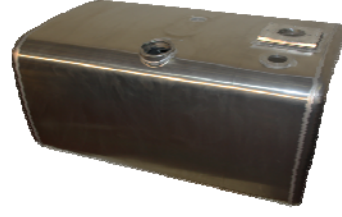
## Combi Tanks

**Combination are Diesel / Hydraulic  
OR Diesel / Add Blue  
OR Diesel / Hydraulic / Add Blue**

**MERCEDES-BENZ**  
**COMBI FUEL TANKS / KOMBİ YAKIT TANKLARI**

Capacity (lt)	Height (mm)	Width (mm)	Length (mm)	OEM Code	Code No.
Hacim (lt)	Yükseklik (mm)	Genişlik (mm)	Uzunluk (mm)	Orijinal Kod	Kod No.

**ALUMINUM / ALUMİNYUM**



160H / 240D	560	640	1250		B01929
175H / 280D	560	640	1420		B01949
200D / 100H	560	640	945		B02197
160H / 260D	700	700	980		B02246
180H / 460D	700	700	1500		B02242
180H / 500D	700	700	1570		B02083
190H / 230D	700	700	950		B01941
200H / 250D	700	700	1050		B02178
200H / 350D	700	700	1300		B02241
250D / 200H	700	700	1050		B02096
260D / 160H	700	700	950		B02202
350D / 200H	700	700	1300		B02092
420D / 200H	700	700	1440		B01940
460D / AddB	700	700	1500		N02773
500 / 200	700	700	1610		N00802

**MAN**

**COMBI FUEL TANKS / KOMBİ YAKIT TANKLARI**

**ALUMINUM / ALUMİNYUM**



120H / 180D	620	675	820		B02118
200H / 585D	620	675	2112		B02093
240D / 160B	620	675	1070		B01860
240D / 160H	620	675	1070		B01859
240D / 160H	620	675	1070		B02130
300D / 100H	620	675	1070		B01896
350D / 150H	620	675	1350		B02252
390D / 200H	620	675	1600	81.12201.5697	B01950
580D / 200H	620	675	2102		B01946

**MILD STEEL / ÇELİK (DKP)**

265 / 135	620	675	1050		B01680
300 / 100	620	675	1050		B01681
400 / 180	620	675	1500		B01682

## OTHER COMBI FUEL TANKS / DİĞER KOMBİ YAKIT TANKLARI

Capacity (lt)	Height (mm)	Width (mm)	Length (mm)	OEM Code	Code No.
Hacim (lt)	Yükseklik (mm)	Genişlik (mm)	Uzunluk (mm)	Orijinal Kod	Kod No.

### ALUMINUM / ALUMİNYUM

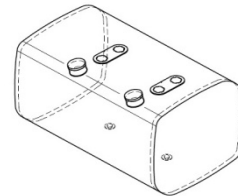


160H / 240D	560	640	1250	A.613.470.4201	B01929
200D / 100H	560	640	945		B02197
280D / 175H	560	640	1420	MERCEDES ACTROS	B01949
120H / 180D	620	675	820	MAN/DAF/IVECO	B02118
200H / 585D	620	675	2112	MAN	B02093
240D / 160H	620	675	1070	MAN/DAF/IVECO	B02130
240D / 160H	620	675	1070	MAN	B01860
240H / 160D	620	675	1070	MAN/DAF/IVECO	B01859
300D / 100H	620	675	1070		B01896
350H / 150D	620	675	1350	MAN	B02252
400H / 200D	620	675	1600		B01950
580H / 200D	620	675	2102	MAN	B01946
180H / 460D	700	700	1500	MERCEDES ACTROS	B02242
180H / 500D	700	700	1570	MERCEDES ACTROS	B02083
190H / 230D	700	700	950	MERCEDES ACTROS	B01941
200H / 250D	700	700	1050	MERCEDES ACTROS	B02178
200H / 350D	700	700	1300	MERCEDES ACTROS	B02241
250D / 200H	700	700	1050	MERCEDES ACTROS	B02096
260D / 160H	700	700	980	MERCEDES ACTROS	B02246
260H / 160D	700	700	950	MERCEDES ACTROS	B02202
350D / 200H	700	700	1300	MERCEDES ACTROS	B02092
420D / 200H	700	700	1440	MERCEDES ACTROS	B01940
500H / 200D	700	700	1610	MERCEDES ACTROS	N00802



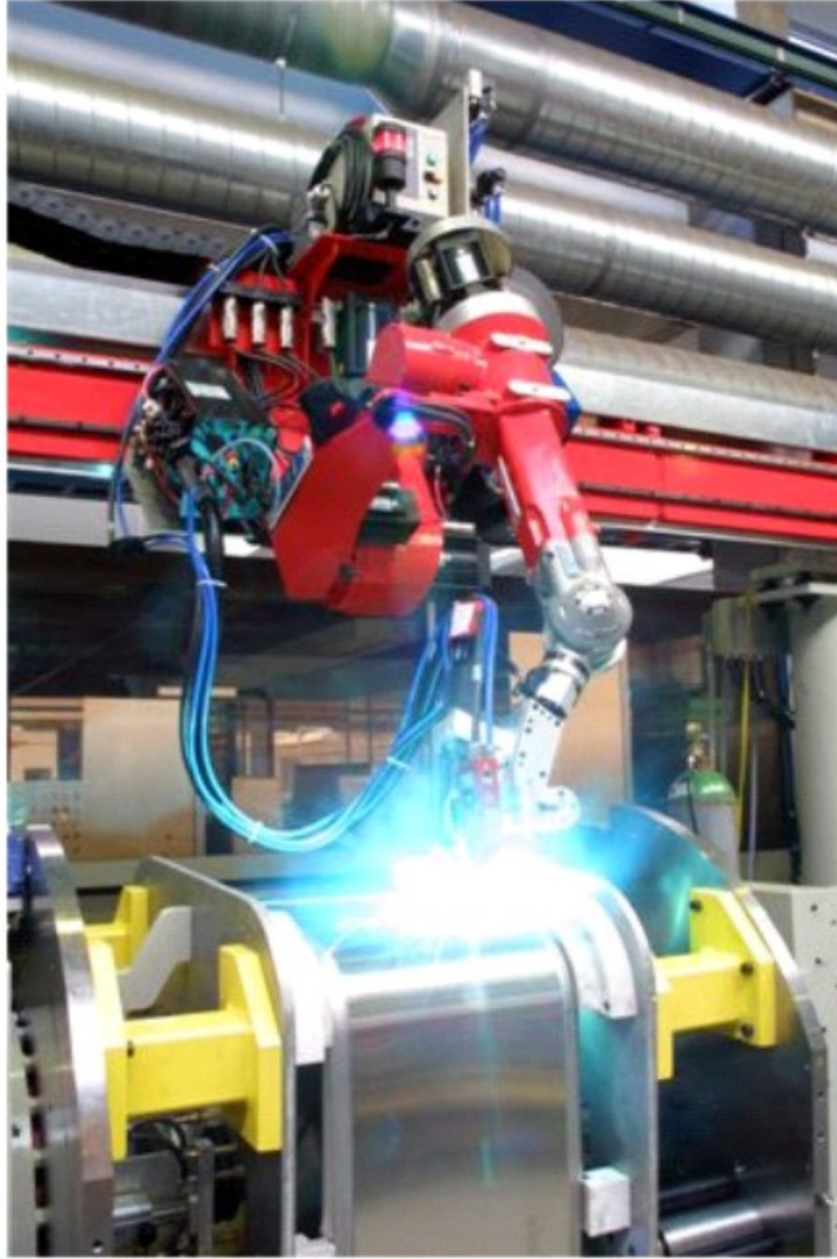
330D / 155H	710	690	1250	VOLVO	B02301
-------------	-----	-----	------	-------	--------

### MILD STEEL / ÇELİK (DKP)



265D / 135H	540	620	2070	Universal	B01685
300D / 100H	540	620	1270	Universal	B01684
400D / 200H	600	680	1500	Universal	B01686
460D / 135H	600	680	1500	Universal	B01687
265D / 135H	620	675	1050		B01680
300D / 100H	620	675	1050		B01681
400D / 180H	620	675	1500		B01682





## HEAD OFFICE

Yukarı Dudullu Mahallesi Nato Yolu Caddesi  
No:161 Ümraniye/İstanbul-34775 TURKEY

Tel : +90 216 561 22 70  
Fax : +90 216 561 22 74  
Webpage : www.sht.com.tr  
Webpage : www.simetritanks.com  
Email Export : info@sht.com.tr  
Email General : info@simetritanks.com



## FACTORIES

### FACTORY-1 : İSTANBUL

Büyükbakkalköy Mh. Başbüyük Yolu No:31 Maltepe / İstanbul  
Tel: +90 216 508 11 45 / 46 Fax: +90 216 508 11 47  
Webpage: www.simetriraf.com

### FACTORY-2 : DÜZCE

D-100 Karayolu üzeri Topçular Boyacı Mevkii Çilimli /DÜZCE  
Tel: +90 380 536 45 52 / 53 Fax: +90 380 536 48 56  
Webpage: www.simetritanks.com