

Specifications

| | |
|---|---------|
| Max. working pressure | 250 bar |
| Weight | 268 kg |
| Working volume | 79 L |
| Total volume | 83 L |
| Max. cyl. load (start tipping) | 245 kN |
| Max. cyl. load (end of stroke) ² | 126 kN |
| Max. cyl. load (end of stroke) ³ | 147 kN |

Max. pump flow

| | |
|-------------------------------------|-----------|
| With KO ¹ | 170 L/min |
| Without KO ¹ | 119 L/min |
| With KO ¹ below -20°C | 119 L/min |
| Without KO ¹ below -20°C | 83 L/min |

Tipping time

| | |
|-------------------------------------|--------|
| With KO ¹ | 28 sec |
| Without KO ¹ | 40 sec |
| With KO ¹ below -20°C | 40 sec |
| Without KO ¹ below -20°C | 57 sec |
| Allowable lowering time | 28 sec |

| Extension | 1 | 2 | 3 | 4 | 5 | 6 | 7 | Total |
|-------------------------|------|------|------|------|------|---|---|-------|
| Effective diameter [mm] | 169 | 149 | 129 | 110 | 85 | | | 5830 |
| Stroke* [mm] | 1150 | 1170 | 1170 | 1170 | 1170 | | | |

Technical notes

- This cylinder is a lifting device only. • It should not be used as a structural member and should not be subjected to side loads. • Tipping valve must have a pressure relief at the cylinder port set not higher than max. working pressure. • Verify max. cyl. load. • Working temperature range is between -40°C and +80°C. • Max. duration of extension is 0.5 hours (excluded hard chromed stages). • Cylinder is painted black (RAL9005) with a min. thickness conforming to the 480 hours neutral salt spray test as per ISO 9227. • ¹ Hyva knock-off. • ² Unsubstantial unloading (sticky load).
- ³ Substantial unloading.

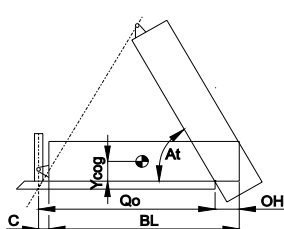
Related documentation

Bracket options: 015BRA10 & 015BRA12

Mounting instructions: CYL-0030

Oil specifications: OIL-0011
Spec sheet explanation: CYL-0041

Tipping weight



| | |
|------|------------------------------|
| BL | body length |
| OH | rear overhang |
| Ycog | vert. pos. centre of gravity |
| Qo | pivot length |
| C | bracket length |
| At | tipping angle |
| | stroke x 60 / Qo |

| BL [mm] | 7700 | | | 7350 | | | 7000 | | |
|-----------|------|-----|-----|------|-----|-----|------|-----|-----|
| OH [mm] | 200 | 500 | 800 | 200 | 500 | 800 | 200 | 500 | 800 |
| At [°] | 45 | 47 | 49 | 47 | 50 | 52 | 50 | 52 | 55 |
| Ycog [mm] | | | | | | | | | |
| 600 | 40 | 43 | 47 | 41 | 45 | 50 | 43 | 47 | 54 |
| 900 | 42 | 47 | 52 | 44 | 49 | 56 | 47 | 53 | |
| 1200 | 46 | 51 | 58 | 48 | 55 | | 52 | | |

Tipping weight [ton] at maximum pressure of 250 bar for a vertically mounted cylinder and C is 229 mm

For detailed tipping calculations please refer to: <https://tipper.hyva.com>

Alpha series - Front end cylinder with outer cover

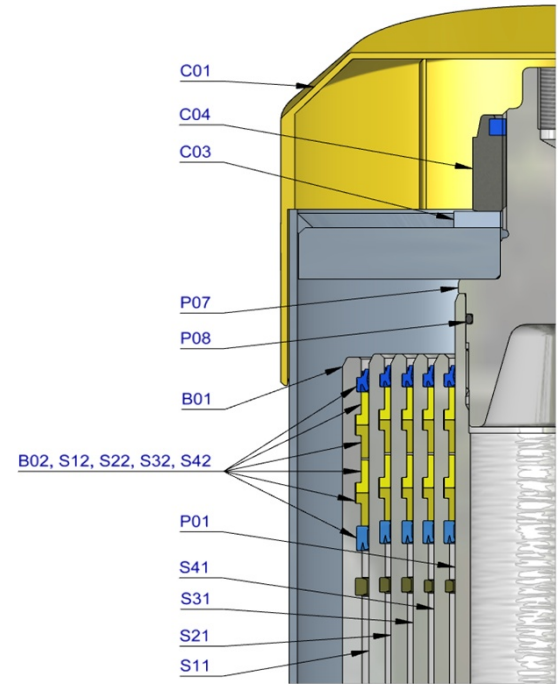


FC A169-5-05830-019-K1300-P85

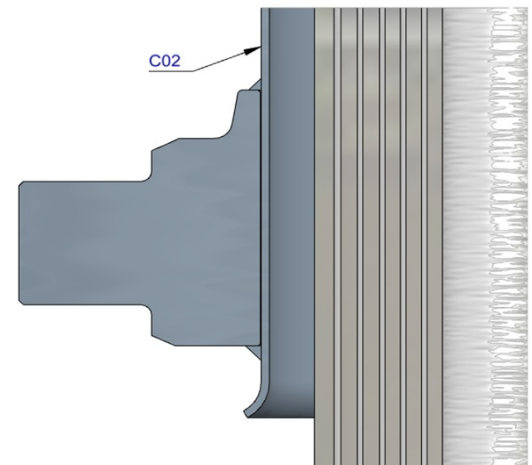
Item no.

70596448

| Pos. | Part no. | Description | Qty. |
|------|------------|-------------------------------|------|
| C02 | 71709036 | COVER 241-0205 PIN60 A340 FIX | 1 |
| C03 | 01702956 K | WASHER M48 DIN 125B ZP | 1 |
| C04 | 01702907 K | TOPNUT NYLOC M48x3 DIN 985 ZP | 1 |
| P01 | 74432361 | PISTON FL2 S 085-1365-HC | 1 |
| P02 | 71853085 K | SLIDER FL 085 (2 X 1/2) A22 | 1 |
| P03 | 71851085 K | OUTER STOPRING FL 085 A22 | 1 |
| P04 | 75322085 | BOTTOM PLATE PISTON 085 | 1 |
| P05 | 01770560 K | CIRCLIP 75 DIN 472 (79.5x3.0) | 1 |
| P06 | 75372085 K | O-RING PISTON BOTTOM HP 085 | 1 |
| P07 | 71848150 | PISTON HEAD FL 085 MK2 | 1 |
| P08 | 01225807 K | O-RING 66.27 X 3.53 MM | 1 |



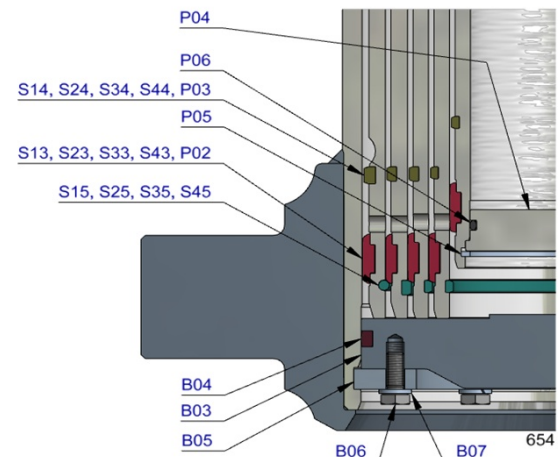
| | | | |
|-----|------------|--|---|
| S41 | 74633370 | STAGE FL2 110-1360 ID90 | 1 |
| S42 | 75302110 K | PACKSET HP 110 | 1 |
| S43 | 71853110 K | SLIDER FL 110 (2 X 1/2) A22 | 1 |
| S44 | 71851110 K | OUTER STOPRING FL 110 A22 | 1 |
| S45 | 71850111 K | INNER STOPRING/LIFTRING FL 110 ID 90 A22 | 1 |



| | | | |
|-----|------------|-----------------------------|---|
| S31 | 74604370 | STAGE FL2 129-1360 | 1 |
| S32 | 71802129 K | PACKSET FL 129/HP 129 | 1 |
| S33 | 71853129 K | SLIDER FL 129 (2 X 1/2) A22 | 1 |
| S34 | 71851129 K | OUTER STOPRING FL 129 A22 | 1 |
| S35 | 71852129 K | LIFTRING FL 129 A22 | 1 |

| | | | |
|-----|------------|---------------------------|---|
| S21 | 74605370 | STAGE FL2 149-1360 | 1 |
| S22 | 71802149 K | PACKSET FL 149/HP 150 | 1 |
| S23 | 71807151 K | SLIDER FL 149 A35 | 1 |
| S24 | 71851149 K | OUTER STOPRING FL 149 A22 | 1 |
| S25 | 71852149 K | LIFTRING FL 149 A22 | 1 |

| | | | |
|-----|------------|---------------------------|---|
| S11 | 74606370 | STAGE FL2 169-1360 | 1 |
| S12 | 71802169 K | PACKSET FL 169 | 1 |
| S13 | 71807171 K | SLIDER FL 169 A35 | 1 |
| S14 | 71851169 K | OUTER STOPRING FL 169 A22 | 1 |
| S15 | 71813169 K | LIFTRING FL 169x5 | 1 |



| | | | |
|-----|------------|-------------------------------|---|
| B01 | 74507374 | BASE FL2 191-1403-4/4BSAE-290 | 1 |
| B02 | 71802191 K | PACKSET FL 191 | 1 |
| B03 | 71825430 | BOTTOM PLATE FL2 191 | 1 |
| B04 | 71870040 K | SEAL BOTTOM PLATE FL 191 | 1 |
| B05 | 71820195 | LOCKING PLATE FL2 191 | 3 |
| B06 | 01732055 K | BOLT HEX M8X20X1.25 SET 6 PCS | 1 |
| B07 | 01732559 K | WASHER SPRING M8 SET 6 PCS | 1 |

Seal kit complete

| | | | |
|--|------------|--|--|
| | 71908652 K | Consists of all packsets with packset grease and O-rings | |
|--|------------|--|--|

Notes

The inner stopring is pre-mounted in the grooves on spare bases and stages. Therefore, when ordering new tubes, it is not required to order inner stoprings separately.

For repair instructions see: CYL-0040. Serial no. is located on type plate and near type plate support.