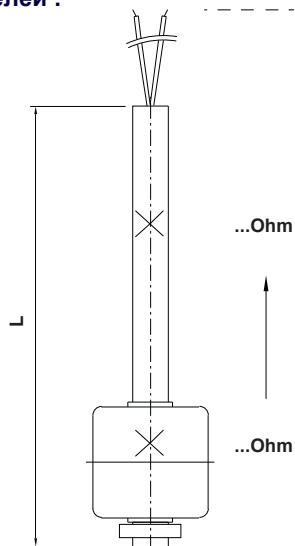


Technical Specifications :

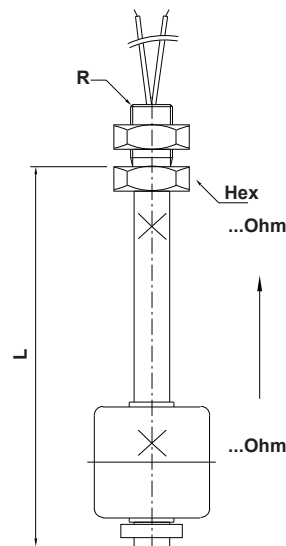
ELSm tx

Материал поплавка	304 нерж. сталь (станд.) опц. 316 нерж. сталь
Материал сма . асвий	304 нерж. сталь (станд.) опц. 316 нерж. сталь
Материал трубки	304 нерж. сталь (станд.) опц. 316 нерж. сталь
Тип поплавка	S4A или S40A (Станд.) На выбор из таблицы
Рабочая температура	Макс. 125 °C
Механическое соединение	3/8" BSP или 1/2" BSP (Станд.) Опц. другое
Электрическое соединение	Кабельное
Количество поплавков	1 (Станд.)
Длина стер . ня	Макс. 2000 мм (Включая резьбу)
Питание	12....36 VDC
Выходной сигнал	Ом
Степень обнаружения	. 15 / 10 / 5
Степень защиты	IP 65 (.), IP 66

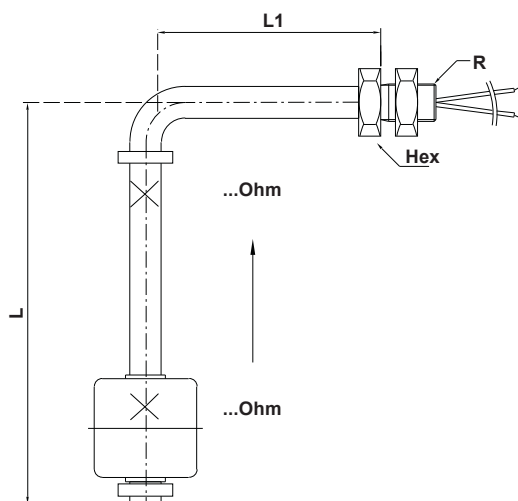
Пример моделей :



Без резьбы



Прямой тип



Локтевой тип

Устройство цифрового управления (Вкл / Выкл, PID)

Питание	100-240 VAC или 24 VAC /
Выходной сигнал	4-20mA, два контакта Опц. Rs485 ModBus RTU
Рабочая темп.	0 / +50 °C
Габаритные размеры	72 x 72 мм
Входной сигнал	Универсальный(mA, mV, V, RT, TC)

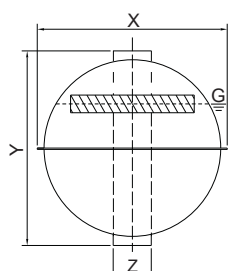


Корпус :

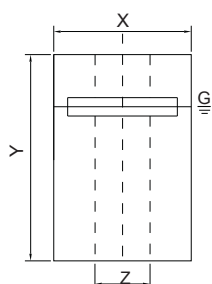


КОД ЗАКАЗА	ТИП	МАТЕРИАЛ	СТЕПЕНЬ ЗАЩИТЫ	ТЕМПЕРАТУРА (°C)	ГАБ. а x b x c (мм)
01	В10р	Пластик (РВТ)	IP 65	(-) 40...(+) 150	96 x 77
02	В20р	Пластик (РВТ)	IP 65	(-) 40...(+) 150	132 x 104
07	В38	Пластик (РВТ)	IP 65	(-) 30...(+) 100	93 x 43
24	В10х	Алюминий	IP 65	(-) 40...(+) 150	96 x 77
25	В20х	Алюминий	IP 66	(-) 40...(+) 200	132 x 104
26	В010	Алюминий (Двойн. ячейка)	IP 68	(-) 40...(+) 100	91 x 116
41	В101х	Нержавеющая сталь	IP 65	(-) 40...(+) 150	108 x 79
51	Р52	РС Серый	IP 65	(-) 20...(+) 125	52 x 50 x 36
52	Р65	РС Серый	IP 65	(-) 20...(+) 125	65 x 58 x 36

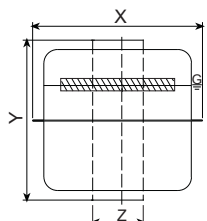
Поплавок :



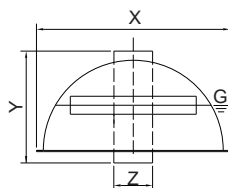
S2A / S5A / S6A
S40A / S41A / S53A



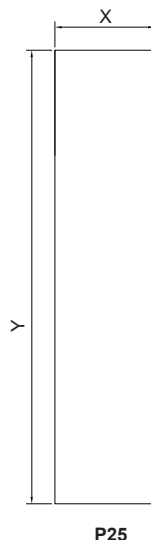
P3 / P6 / P7 P9



S1Y / S1A / S7A / S17A
S10Y / S11A / S54A

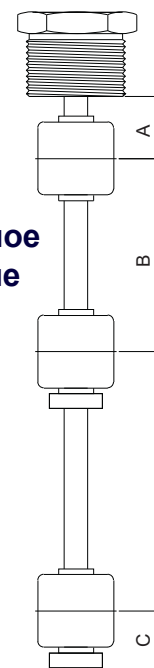


S42A / S52A



P25

**Минимальное
расстояние**



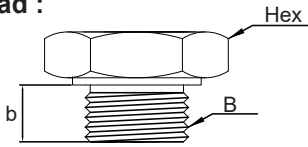
Код заказа	Тип	Материал	X	Y	Z	Диам. труб.	Макс. Давление (бар)	Макс. Темп. (°C)	Плотность (г/см³)	A	B	C
102	S2A	316 нерж.	43	43	11	10	15	150	0.80	34	68	34
104	S5A	316 нерж.	73	73	20	16	30	150	0.65	50	99	50
105	S6A	316 нерж.	73	73	17	15	30	150	0.65	50	99	50
106	S7A	316 нерж.	43	52	15	13	30	150	0.88	34	68	34
111	S17A	316 нерж.	52	35	15	13	30	150	0.85	39	78	39
113	S40A	316 нерж.	55	55	15	13	30	150	0.80	42	82	42
114	S41A	316 нерж.	55	55	15	13	30	150	0,9	42	82	42
115	S42A	316 нерж.	55	30	15	13	20	150	1,2	42	55	42
118	S52A	316 нерж.	73	40	20	16	20	150	0,9	50	65	50
119	S53A	316L нерж.	52,5	50,2	15,5	14	10	200	0,6	42	82	42
120	S54A	316L нерж.	51	61,2	15,5	14	10	200	0,47	50	90	50

Код заказа	Тип	Материал	X	Y	Z	Диам. труб.	Макс. Давление (бар)	Макс. Темп. (°C)	Плотность (г/см³)	A	B	C
201	P3	PU	30	45	12	10	1	80	0.76	28	60	40
203	P6	PU	35	42	15	13	1	80	0.65	35	65	40
204	P7	PU	44	50	18	15	1	80	0.40	38	70	50
213	P9	PP	46	44	17	15	5	80	0.65	38	76	38
206	P25-1	PU	25	150	-	-	1	80	0.80	-	-	-
207	P13	PU	30	32	12	10	1	80	0.90	28	75	40

Все размеры указаны в мм.

Mechanical Connections:

Thread :

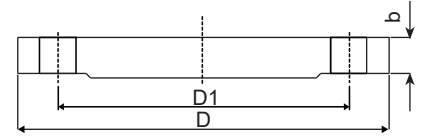


(ISO228-1)

Order Code	Dimension B	Hex (mm)	Thread Size b (mm)
001	1/8fl BSP	17	12
002	1/4fl BSP	17	12
003	3/8fl BSP	24	20
004	1/2fl BSP	27	14
005	3/4fl BSP	32	14
006	1fl BSP	41	23
007	1 1/4fl BSP	51	23
008	1 1/2fl BSP	60	23
009	2fl BSP	70	23

Flanged

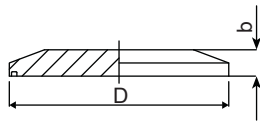
Order Code	(ISO1092-1) PN 16	D (mm)	D1 (mm)	b (mm)
103	DN 25	165	85	16
104	DN 32	140	100	16
106	DN 50	165	125	18
108	DN 80	200	160	20
109	DN 100	220	180	20



Order Code	(ISO1092-1) PN 40	D (mm)	D1 (mm)	b (mm)
303	DN 25	115	85	18
304	DN 32	140	100	20
306	DN 50	165	125	20
308	DN 80	200	160	20
309	DN 100	235	190	24

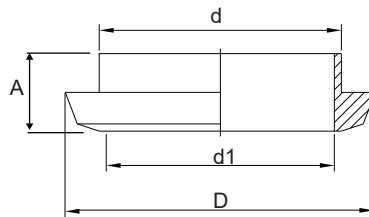
Order Code	(ANSI B16.5) 150 LBS	D (mm)	D1 (mm)	b (mm)
606	DN 50	152,4	121	19
607	DN 65	177,8	139,7	22,2
608	DN 80	190,5	152,4	23,8
609	DN 100	228,6	157,2	23,8

Clamp



Order Code	(ISO2852) Dimension	D (mm)	b (mm)
851	DN 32	50,5	15
852	DN 50	64	17
853	DN 65	91	17

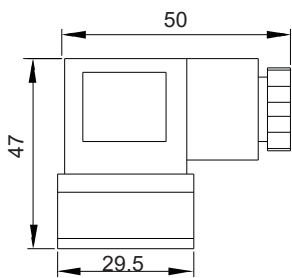
Dairy



Order Code	Dimension	Dimension	D (mm)	d1 (mm)	A (mm)
870	DN 40	DN 40	56	48	15
871	DN 50	DN 50	68	61	16
872	DN 100	DN 100	121	114	20

Electrical Connection Type:

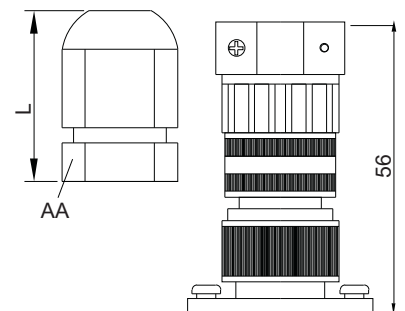
P01 / P03 / P04



K01 / K02 / K03

Order Code	Material	Protection Class	AA	L
01	Metal	PG7	14 AA	22
02	Metal	PG9	17 AA	22
03	Metal	PG11	20 AA	25
24	Plastic Metal-Ex	PG13.5	24 AA	31
05	1/2fl NPT	IP66/68	22 AA	25
		CESI	305 X	
06	Metal	R1/2fl	22 AA	21

ML-2 / ML-5

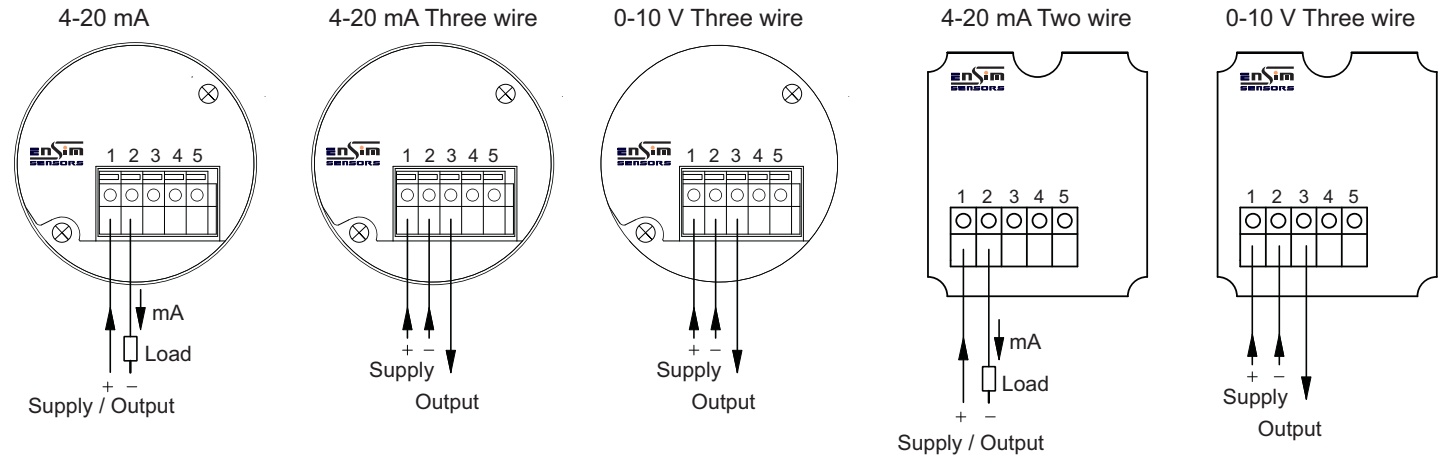


All dimensions are stated as mm.

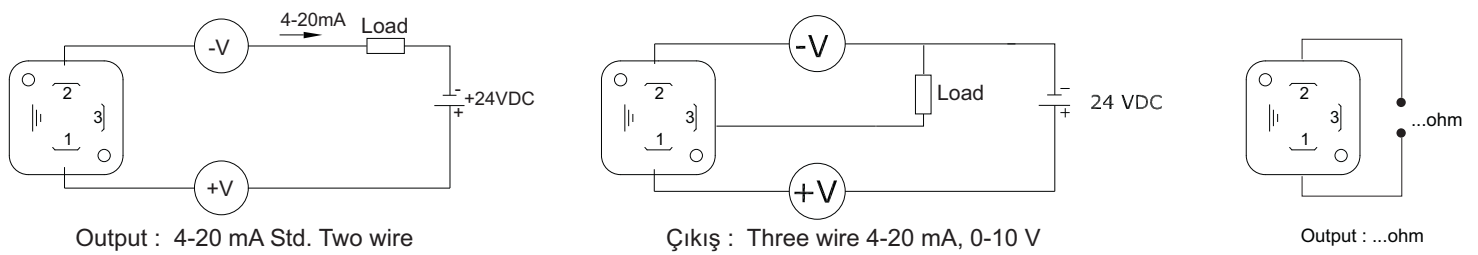
Electrical Connection Type :

B10p , B10x , B101x With Housing

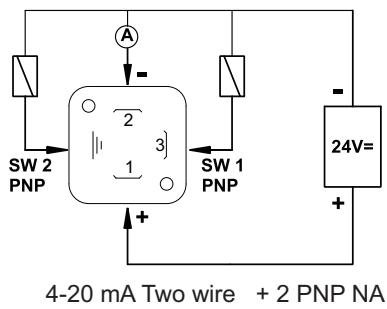
B038, P52, P65 With Housing



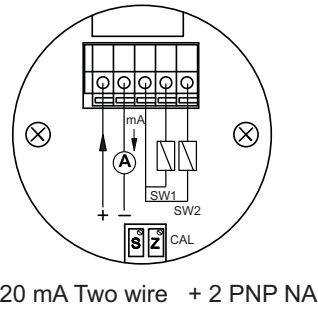
DIN43650 With Socket P01



EDS 01 For Display

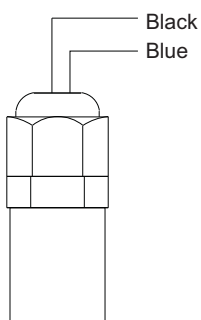


B010 Aluminium Housing (Double Cell)

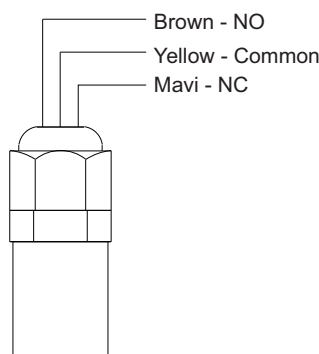


PG With Socket or with Cable

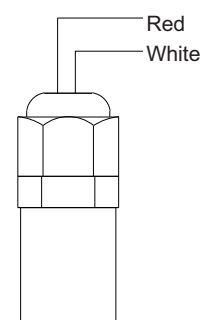
PVC Cable (105 °C)



Silicon Cable (200 °C)



PTFE Cable (230 °C)



Order Form : Please consider sample models when coding!..

1 MODEL

Standard Version	ELStx	ELSp (For Hydraulic Tanks).....	ELSp-tx
ELSy (For Yacht Industry).....	ELSy-tx	ELSm (For Machinery Manufacturing).....	ELSm-tx

2 CERTIFICATE

None.....	0	(EN10204-3-1) Material Certification	1
-----------	---	--	---

3 HOUSING

None.....	00	Aluminium , B035.....	27
Plastic Housing , B10p	01	Stainless Steel Housing , B101x.....	41
Plastic Housing , B20p	02	PC Gray , P52.....	51
Plastic Housing , B038	07	PC Gray , P65.....	52
Aluminium Housing , B10x	24	Special.....	x
Aluminium Housing , B20x	25		

4 ELECTRICAL CONNECTION

Terminal (For Housing Models).....	00	M12-2 Pin.....	70
Polyamide Big Socket P01.....	50	M12-5 Pin.....	71
Polyamide Small Socket P02.....	51	M12-8 Pin.....	72
Polyamide Big Socket With Light P03.....	52	PVC Cable (Max. 60 °C).....	80
Military Socket ML-2 , 2 Pin.....	60	PVC Cable (Max. 105 °C).....	81
Military Socket ML-5 , 5 Pin.....	61	Silicon Cable (Max. 200 °C).....	82
		PTFE Cable (Max. 230 °C).....	83
		Special Cable.....	x
		Special Socket.....	x

5 CONNECTION

Piped- Without Thread.....	000	1/8" NPT.....	051
Thread 1/8" BSP.....	001	1/4" NPT.....	052
Thread 1/4" BSP.....	002	3/8" NPT.....	053
Thread 3/8" BSP.....	003	1/2" NPT.....	054
Thread 1/2" BSP.....	004	3/4" NPT.....	055
Thread 3/4" BSP.....	005	1" NPT.....	056
Thread 1" BSP.....	006	1 1/4" NPT.....	057
Thread 1 1/4" BSP.....	007	1 1/2" NPT.....	058
Thread 1 1/2" BSP.....	008	2" NPT.....	059
Thread 2" BSP.....	009		
Thread 1/2" BSP (Moving Type).....	013	Special.....	x

Thread M10 x 1 mm Straight Type.....081

Note: Refer to the table for others.

Thread 1/8" BSP With Elbow091

Thread M10 x 1 mm With Elbow092

Thread 3/8" BSP With Elbow093

Thread 1/2" BSP With Elbow094

6 CONNECTION MATERIAL

304 Stainless Steel.....01	Aluminum.....05
316 Stainless Steel.....02	PVC.....08
Brass.....03	Special.....x

7 PIPE SIZE

8 mm.....08	12.7 mm / 13 mm.....13
10 mm.....10	15 mm.....15
12,7 mm.....12	Special.....x

8 PIPE MATERIAL

304 Stainless Steel.....01	Brass.....08
316 Stainless Steel.....02	PVC.....20
	Special.....x

9 STEM LENGHT

.... mm

Note: From the connection, (including thread)

10 FLOAT TYPE

Select from table

Note: Proper connection and radius should be selected.

11 OUTPUT

4-20 mA Two Wire.....19	3-180 Ohm.....23
4-20 mA Three Wire.....20	10-180 Ohm.....24
0-10 V Three Wire.....21	240-33 Ohm.....25
0-20 mA Three Wire.....22	Special.....x

12 SENSITIVITY RANGE

15 mm.....15	5 mm.....05
10 mm.....10	Special.....x

13 OPTIONEL

None..... / 0	Extarnal Tank (Dimensions should be stated)..... / H
pt100 Sensor..... / P	Test Rode..... / T
Analog Display..... / DA	Float Housing..... / M
Local Digital Display..... / EDS01	Special..... x

SAMPLE

ELS-tx 001 - 00 - 09 - 02 - 13 - 02 - 1200 - 113 - 20 - 10 / 0

ELS-tx Level Transmitter, Plastic Housing, 2" BSP Male Thread , Connection and Pipe Material 316 Stainless steel ,
L= 1200 mm, S40A Float , 4-20 mA Three wire output , Sensing point in every 10 mm