

Specification

Model : RZ00C0TC

Description: 3000*10, 360pcs 2835 SMD LED, bare-board series, constant voltage 24Vdc, LED flex strip



Prepared by : _____

Checked by : _____

Standard Dept : _____

Approved by : _____

Issued Status: Draft Published

Specification

Product Name: LED Flex strip

Model: RZ00C0TC

Applications

As indoor light, suit to KTV, shopping mall etc. as cove and contour lighting.

Features

1. 2835 SMD LEDs ensure high luminous efficacy;
2. Ultra bright;
3. Can be cut at the printed marks;
4. This product must be equipped with metal profile in use;
5. CE, UL, RoHS compliant.

Installation

1. Easy installation with self-adhesive back.
2. Multiple installation and fixing options available with the minimum bending diameter as 5cm [1.96in].

Warranty

3 years or 13000 hours, whichever comes first.

Optical and Electrical Parameters:

P/N	LED Color	Color Temperature(K)	Beam Angle (°)	Luminous Flux (lm/m)	CRI	Luminous Efficacy (lm/W)	Working Voltage (V DC)	Working Current (mA)		Power (W)	
								1m [39.37in]	3m [118.11in]	1m [39.37in]	3m [118.11in]
RZ00C0TC-A-T-1	Daylight white	4000	115	2200	≥80	84	24	1096	3021	26.3	72.5
RZ00C0TC-A-T-UL-1	Daylight white	4000	115	2200	≥80	84	24	1096	3021	26.3	72.5

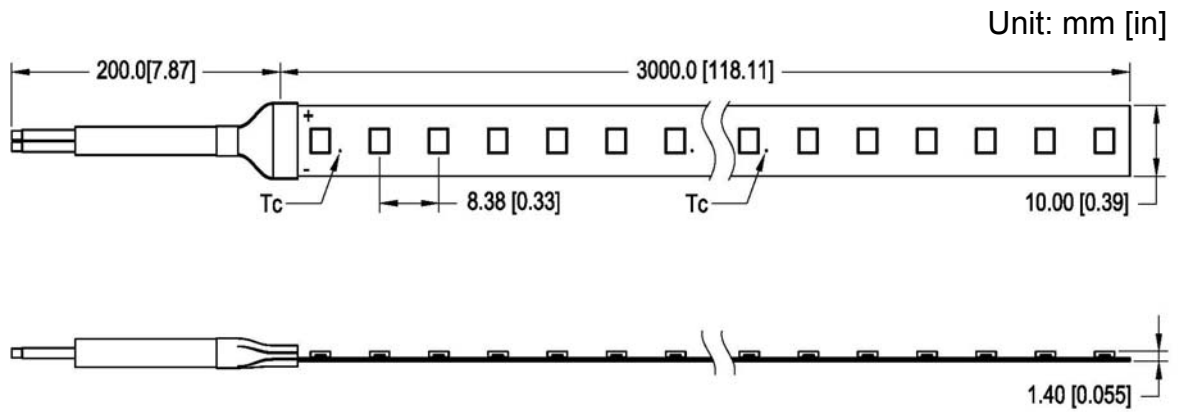
Others:

P/N	LED Color	Standard Length		Max. Length		LED Qty (pcs/ m)	Operating Temperature @Tc		Storage Temperature		IP Grade
		(m)	(in)	(m)	(in)		(°C)	(°F)	(°C)	(°F)	
RZ00C0TC-A-T-1	Daylight white	3	118.11	3	118.11	120	-25~+65	-13~149	-25~+70	-13~+158	IP33
RZ00C0TC-A-T-UL-1											

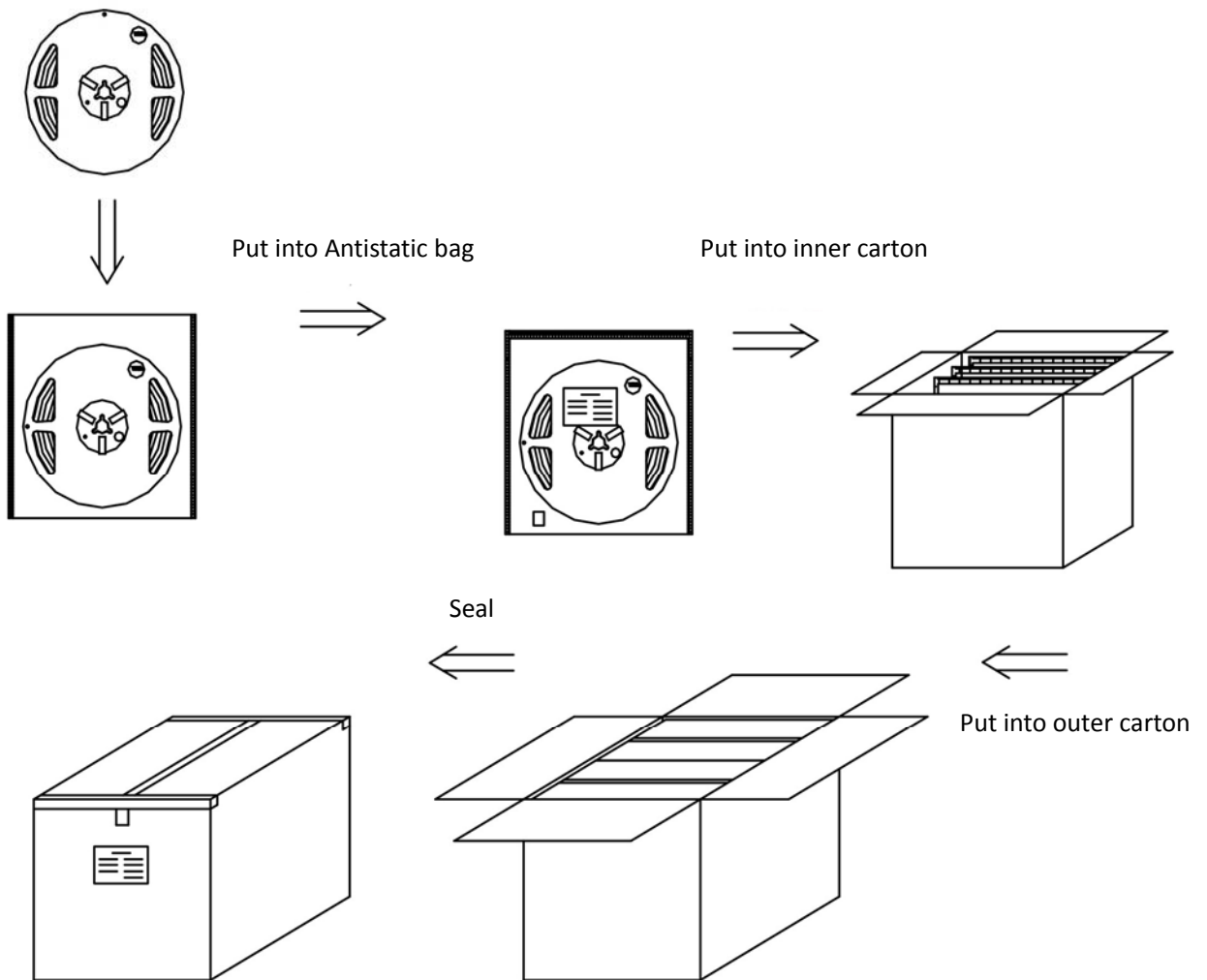
Notes:

- ① Testing environment temperature: $25\pm 2^{\circ}\text{C}$ [$77\pm 3.6^{\circ}\text{F}$];
- ② The actual data of each single product may differ from above typical data which are subject to change without prior notice.
- ③ This product must be equipped with metal profile in use, the recommended metal profile is: 6063-t5, with heat radiating area $>0.08\text{m}^2$.
- ④ The operating temperature is measured at Tc points by temperature sensor (please refer below profile drawing for specific locations of Tc points).

Profile Drawings:



Packaging Diagrams:



Packaging Information:

1. Rolling this product into plastic reel and then packaged into double-deck corrugated carton.
2. Outer carton: 39.8*25.6*23.8cm =0.0242 (1±10%) CBM [15.66*10.07*9.37in];
3. 3m [118.11in] per reel, 2 reels per antistatic bag, 10 bags=60m[2362.2in] per inner carton, and makes 120m[4724.4in] per outer carton
4. Net Weight (N.W) : 3.0 (1±10%) kg [6.6 (1±10%) lb];
5. Gross Weight (G.W) :4.2 (1±15%) kg [9.25 (1±10%) lb];
6. The actual packed quantity and weight may subject to change without prior notice.