

WOLFIN®

BAUTECHNIK



COSMOFIN FG: Thermoplastic synthetic roofing membranes

The Gateway to Quality

WOLFIN®

WATERPROOFING THAT WORKS.



The economical solution for waterproofing of large surfaces: COSMOFIN FG

COSMOFIN FG is a high-quality, thermoplastic synthetic roofing membrane made of monomer plasticized PVC, equipped with an extremely stable integrated polyester fabric reinforcement which has no capillary effect.

The long-term proven recipe of the COSMOFIN FG roofing membrane in combination with a new rolling technology leads to an optimised membrane surface and therefore provides a very good application. COSMOFIN FG is suitable for loose lay under ballast as well as for mechanically fixed structures. Thus, it offers considerable economic advantages concerning the storage for roofers and resellers because only one roofing membrane is necessary for two methods of application.

COSMOFIN FG as part of the WOLFIN Bautechnik product range was specially developed for new constructions and the cost saving waterproofing of large surfaces.

High-quality system products such as adhesives, stainless steel drainage elements as well as internal and external corners and a homogenous membrane for forming structural details complete the product range.



With integrated polyester flat fabric: COSMOFIN FG



Without fabric reinforcement for forming structural details: COSMOFIN F

COSMOFIN FG is made by extrusion and is characterised by the following **product characteristics**:

- Special polyester flat fabric which has no capillary effect
- No seam sealing necessary
- Low retraction of the membrane
- Cold-resistant
- Resistant to plant roots and rhizome according to FLL and EN 13948
- Suited for hot-air and solvent welding
- Recyclable
- Economic advantages for our partners – one roofing membrane for two methods of application



Safe and efficient
hot air welding



System solutions
down to the last detail

Proofed and valued as quality



- CE-certification according to EN 13956 and EN 13967
- Meets DIN V 20000-201 (DE/E1 PVC-NB-V-PG) for waterproofing of roofs
- Meets DIN 18531 (Waterproofing of Roofs) and DIN 18195 (Waterproofing of Buildings)
- More than 50 years long-term experience, tested in different climatic zones

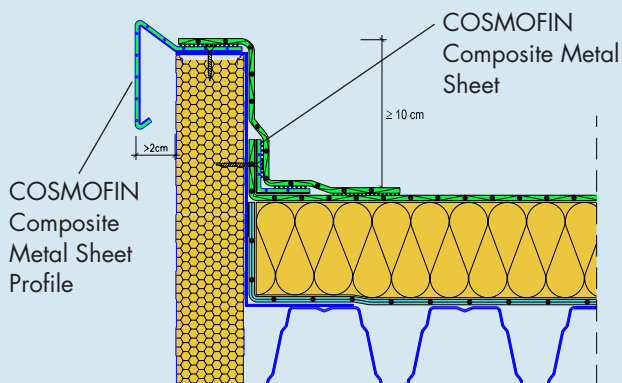
Fire tests

- DIN 4102-1 (B2) and EN 13501-1 (class E)
- DIN 4102-7 and EN 13501-5 B_{ROOF} (t1) (External Fire)

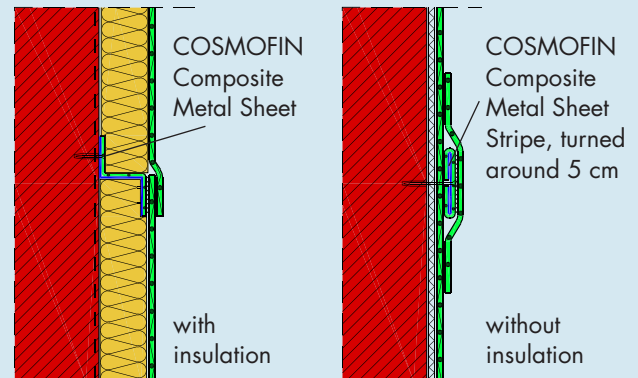
B_{ROOF}(t1)

DETAIL SOLUTIONS

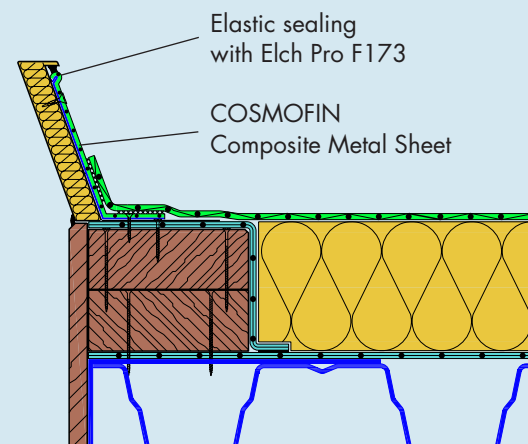
Sandwich element facade



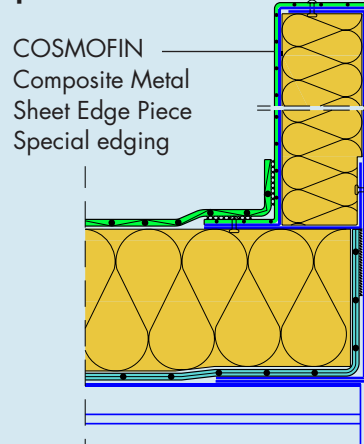
Intermediate fixing in case of connection heights of more than 50 cm



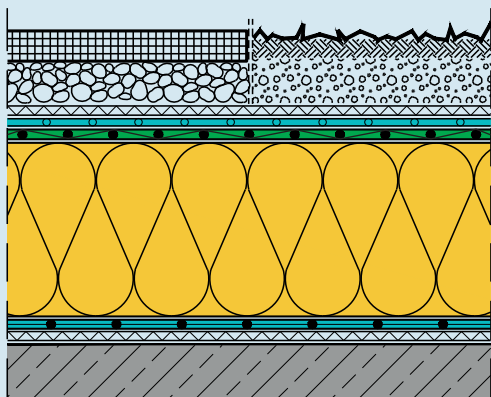
Skylight connection with Composite Metal Sheet Profile



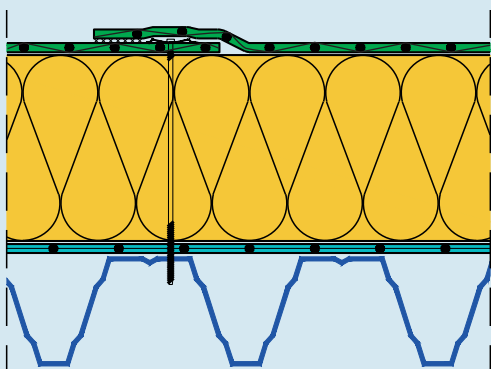
Lightning row connection, one-piece of Composite Metal Sheet



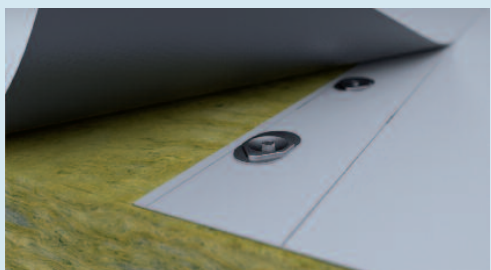
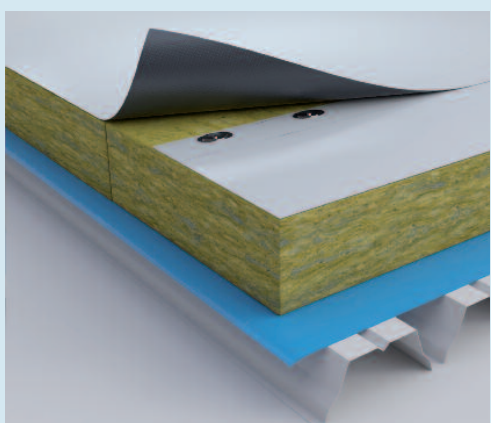
One roofing membrane – two methods of application



Loose lay under ballast



Mechanically fixed structure



PRODUCT RANGE COSMOFIN

COSMOFIN FG membranes

Product name	Thickness mm	Width mm	Length mm	Area m ² /roll
COSMOFIN FG	1,5	1.060	20	21,20
COSMOFIN FG	1,5	1.650	20	33,00
COSMOFIN FG	1,8	1.650	17,50	28,88
COSMOFIN FG	2,0	1.650	15	24,75

COSMOFIN F

homogenous membrane for welding composite metal sheet butts, forming pipe collars and other structural details

COSMOFIN F	1,5	1.000	20	20,00
------------	-----	-------	----	-------

COLOUR

Grey

COSMOFIN system products

Product name	Width mm	Length m	Area m ² /roll
COSMOFIN – Composite Metal Sheet Plate 50 plates/palett	1.000	2	2
COSMOFIN – Composite Metal Sheet Plate 50 plates/palett	1.000	3	3
COSMOFIN – Composite Metal Sheet Coil 4 coils/palett	1.000	30	30
WITEC Walkway – Maintenance path for the COSMOFIN membrane system, dark grey	1.060	15	15,90
WITEC KV pro, 300 g fleece with laminated 80 µ PE-foil especially for the COSMOFIN system structure under ballast	2.200	50	110,00

Product name	Required amount	Packaging unit
--------------	-----------------	----------------

WITEC Solvent Welding Agent	approx. 40 g/m	1 l / 5 l / 30 l
-----------------------------	----------------	------------------

Product name	Content
--------------	---------

COSMOFIN Internal Corner, 90 °	25 pcs./carton
COSMOFIN External Corner, 90 °	25 pcs./carton

COSMOFIN Lightning Rod Protection Tube, pipe length 250 mm, Ø internal 20 mm, Ø external 25 mm	5 pcs./carton
--	---------------

Adhesives	Required amount	Packaging unit
-----------	-----------------	----------------

Terokal 914 Joint Adhesive (Contact adhesive for rising components)	approx. 300 g/m ²	10 kg
--	------------------------------	-------

Terotech Spray Adhesive Joint adhesive and assembly support	approx. 250 g/m ² (both side application)	750 ml
--	---	--------

TECHNICAL INFORMATION COSMOFIN FG
Product data according to EN 13956: Exposed lay (mechanically fixed) – under ballast (gravel/green roof or similar)

Product data according to EN 13967: Moisture barrier – Ground water barrier

Characteristics	Test standard	Unit	Details	Result**		
				1,5 mm	1,8 mm	2,0 mm
Visible defects	EN 1850-2	—	passed	passed		
Length	EN 1848-2	m	MDV (-0/+5 %)	20	17,5	15
Width		m	MDV (-0,5/+1 %)	1,06 / 1,65	1,65	1,65
Straightness		mm	MLV	≤ 50		
Flatness		mm	MLV	≤ 10		
Mass per unit area	EN 1849-2	kg/m ²	MDV (-5/+10 %)	1,9	2,3	2,5
Water tightness	EN 1928 B	kPa	MLV	passed		
External fire performance	ENV 1187	—	Annex E	B _{ROOF} (t1)*		
Reaction to fire	EN 13501-1	—	s. 5.2.5.2	Class E		
Joint peel resistance	EN 12316-2	N/50 mm	MLV	≥ 300		
Joint shear resistance	EN 12317-2	N/50 mm	MLV	≥ 800		
Tensile strength	EN 12311-2	N/50 mm	MLV	≥ 1.000		
Elongation	EN 12311-2	%	MLV	≥ 10		
Resistance to impact						
Method A	EN 12691	mm	MLV	600	700	750
Method B	EN 12691	mm	MLV	600	700	750
Resistance to static load	EN 12730 B	kg	MLV	≥ 20		
Durability of water tightness against aging	EN 1296 EN 1928	—	passed	passed		
Durability of water tightness against chemicals	EN 1847 EN 1928	—	passed	passed		
Nail tear resistance	EN 12310-1	N	MLV	≥ 400		
Tear resistance	EN 12310-2	N	MLV	≥ 250		
Resistance to root penetration	EN 13948	—	passed	passed		
Dimensional stability	EN 1107-2	%	MLV	≤ 1,0		
Foldability at low temperature	EN 495-5	°C	MLV	≤ -25		
UV exposure	EN 1297	visual	passed	passed		
Hail resistance	EN 13583	m/s	MLV	≥ 25		
Water vapour permeability	EN 1931	μ	μ = MDV or 15.000	25.000 ± 5.000		

Information for product users:

* Please contact the manufacturer for information on the tested system structures

** Values in new conditions

Explanation:

MDV = Manufacturer's declared value

MLV = Manufacturer's limiting value

Status: July 2014

 Technical changes due to further developments are possible. Please consider the current installation guideline and -construction. You can find the declarations of performance on our website www.wolfin.com/Downloads


A company of the ICOPAL-Group



WOLFIN Bautechnik GmbH

Am Rosengarten 5

D-63607 Wächtersbach-Neudorf

Phone: +49 6053 708-0

Fax: +49 6053 708-130

E-Mail: export@wolfin.com

www.wolfin.com



WBTO101_1014_VU