

# GAF PERIMETER EDGE METAL



**Perimeter edge metal provides many benefits in addition to aesthetics, such as:**

- Functions as the termination and transition between the roof and other building components
- Ensures product consistency and performance
- Increases productivity by eliminating fabrication time
- Provides proper attachment due to pre-punched slotted holes
- Allows for thermal movement
- Can be installed with high-torque screws instead of nails
- Factory-fabricated corners and accessories come pre-manufactured, providing a clean look while eliminating field labor

GAF Perimeter Edge Metal offers a full lineup of pre-fabricated coping, fascia, drip edges, gutters, downspouts, and trim in both steel and aluminum in a variety of KYNAR®-coated colors.

All products are FM approved and ES-1 tested since they are the first line of protection in a wind event.



- **M-Weld™ Gravel Stop MB Fascia...**  
Pre-punched slotted holes; self-locating cleat.
- **EverGuard® Snap-On Fascia...**  
Economical solution for single-ply membranes that are less than 60 mils.
- **M-Weld™ Snap-On Coping...**  
20-gauge cleat designed to improve contractor productivity. No need for caulking or sealing at fasteners or joints; preformed splice channel directs water to the roof.
- **EverGuard® EZ Fascia...**  
High-performance cleat with snap-on cover; reduces labor and enhances roof system integrity.
- **M-Weld™ EZ Fascia EX...**  
Two-piece snap-on fascia system with heavy-duty aluminum retainer to improve contractor productivity and enhance roof system performance.
- **M-Weld™ Snap-On Plus Coping...**  
Heavy 16-gauge cleat for higher wind resistance; no need for caulking or sealing at fasteners or joints; preformed splice channel directs water to the roof.



For more information on perimeter edge metal, contact your local GAF Representative or visit [gaf.com/EdgeMetal](http://gaf.com/EdgeMetal).



# DRILL-TEC™ FASTENERS



Flat Plate  
for Insulation



Double Barbed XHD® Plate  
for Membrane



Drill-Tec™ #12 Fasteners

Drill-Tec™ Fasteners and Plates offer a comprehensive lineup of insulation and membrane products that can be used on almost any deck type. The fasteners are made with high-quality corrosion-resistant stainless steel alloy and the plates of Galvalume®-coated steel to provide the performance you can rely on.

## Drill-Tec™ Fasteners...

Come in a wide range of lengths and head types.

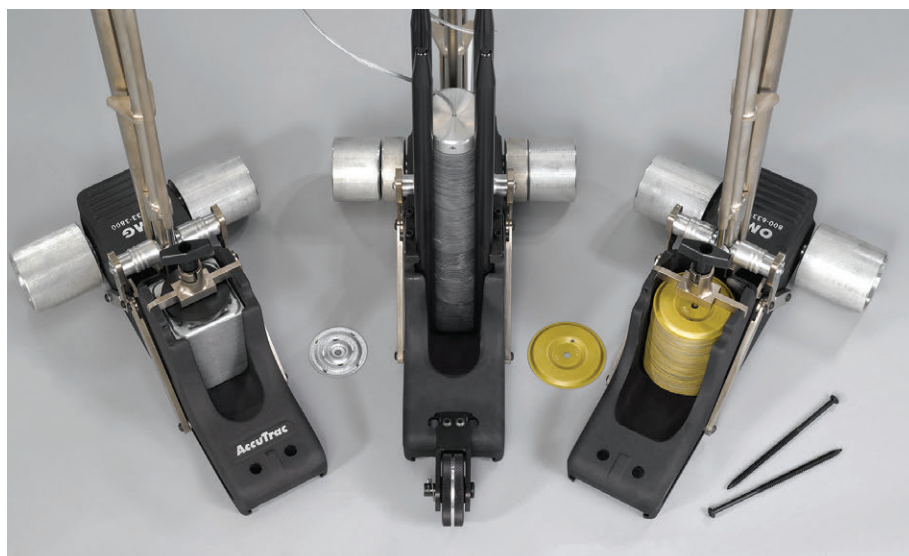
## Insulation Plates...

For both regular, flat polyiso insulation as well as cover board applications.

## Membrane Plates...

A wide variety of membrane plates, including double-barbed 2 3/8" plate options, exclusive to GAF, which can increase wind uplift ratings compared to standard single-barbed plates.

GAF Drill-Tec™ Fasteners and Plates meet all the standards required by Factory Mutual (FM) and Underwriters Laboratories (UL) to reduce your labor cost and increase your productivity. Most all the Drill-Tec™ Fasteners and Plates are compatible with OMG Accutrak®, OMG AccuSeam®, and RhinoBond®† tools.



†RhinoBond® is a registered trademark of OMG.



For more information on Drill-Tec™ Fasteners, contact your local GAF Representative or visit [gaf.com/DrillTec](http://gaf.com/DrillTec).



# EVERGUARD® TPO

## Prefabricated Accessories

- Watertight • Consistent, field-tested quality • Proven to reduce total installed cost by up to 12%\*

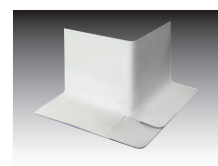


### Walkway Roll

Heat welds directly to TPO membrane or installed with seam tape; available in gray and yellow

### Corner Curb Wrap

Four standard sizes to flash curbs that are 24", 36", 48", and 60" in size



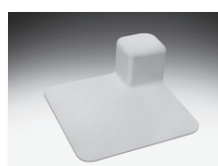
### Pourable Sealer Pocket

Structural foundation for EverGuard® Pourable Sealant



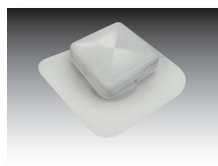
### Fluted Corner

For use in flashing outside corners of base and curb flashings



### Universal Corner

Accommodates both inside and outside corners of base and curb flashings



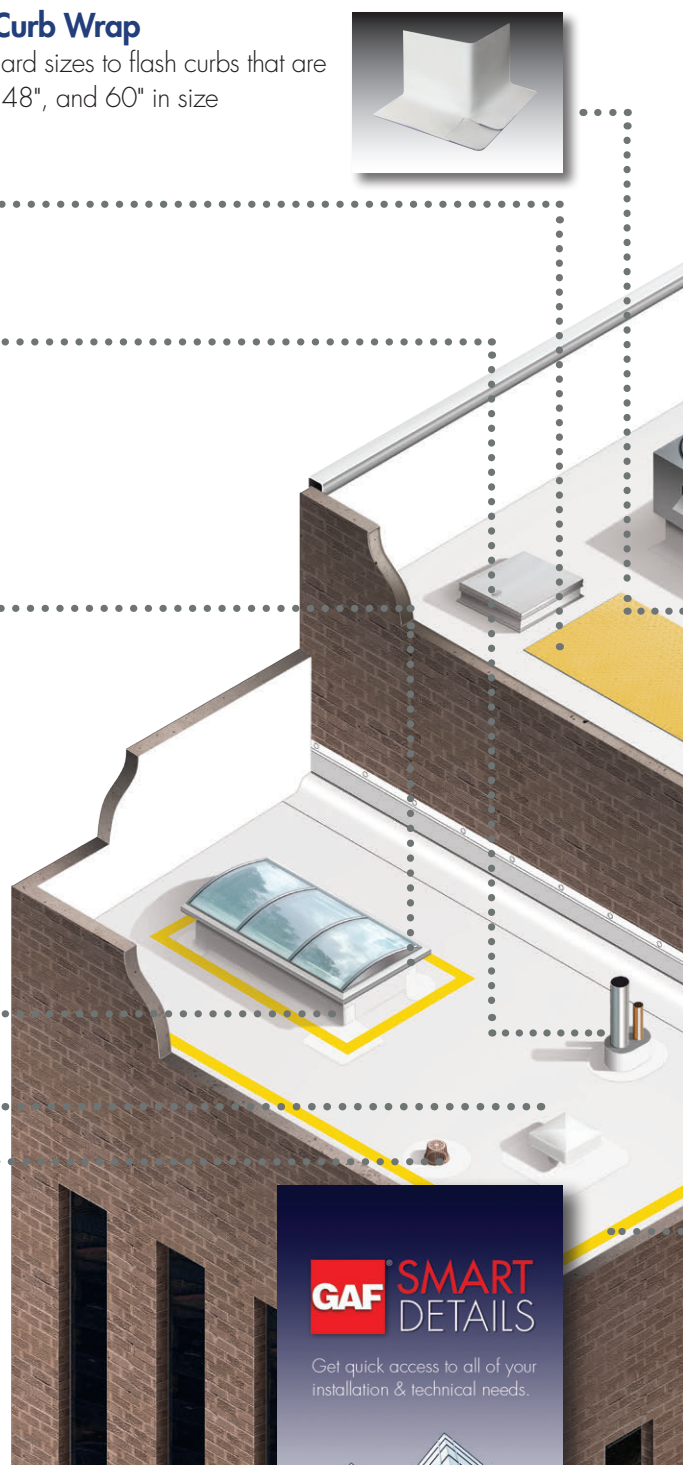
### Vent

Limits air flow to one direction, avoiding moisture buildup



### Coated SPEEDTITE™ Drain

TPO or PVC-coated flange for direct hot-air welding of TPO or PVC roof membranes



**GAF** SMART  
DETAILS

Get quick access to all of your  
installation & technical needs.



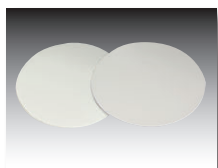
Get quick access to all of your installation and technical needs at  
[gaf.com/smartdetails](http://gaf.com/smartdetails).



\*Compared to GAF estimate to field-fabricate flashing details.

### T-Joint Cover Patches

Conforming seal for use over T-joints in 60 and 80 mil membrane applications



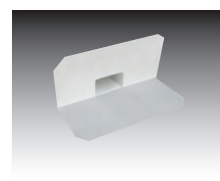
### Inside Corner

Manufactured to accommodate inside corners of base and curb flashings



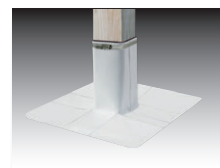
### Scupper

TPO can be heat welded to the scupper for a strong, secure installation



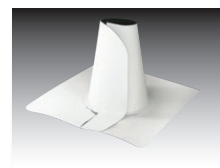
### Square Tube Wrap

Tube wraps are split with overlap to wrap around square or rectangular tubing; ensures a solid weld



### Preformed Split Pipe Boot

Three standard sizes accommodate most pipes and conduits



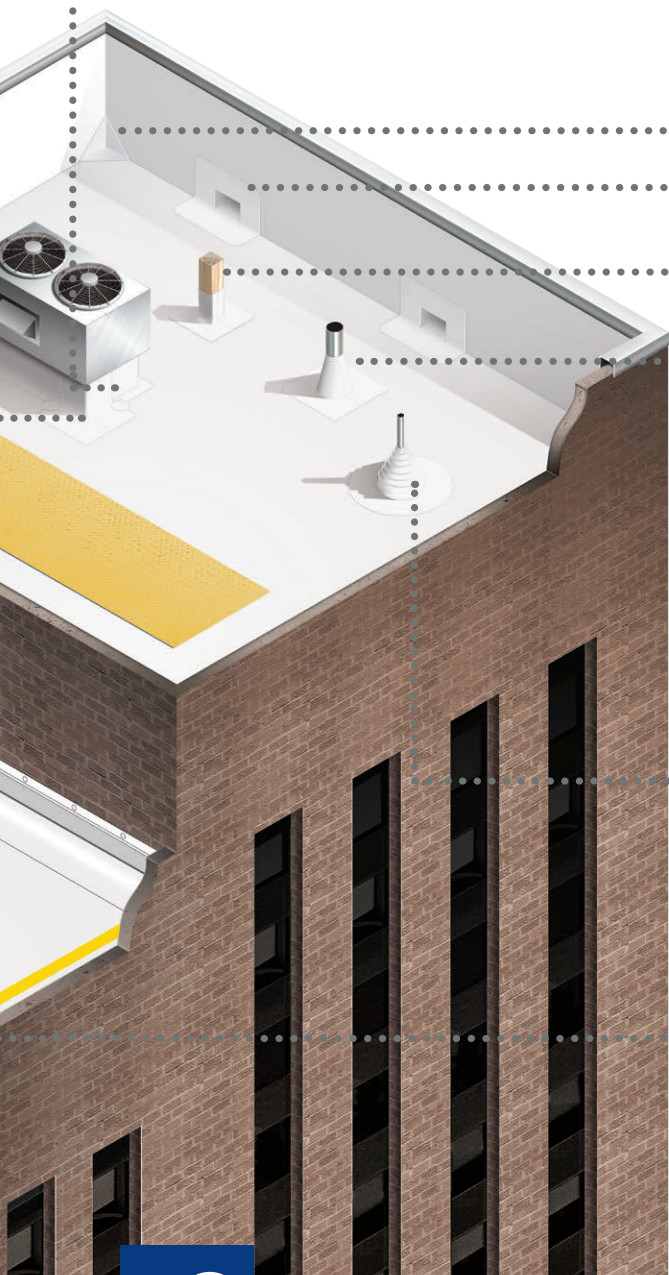
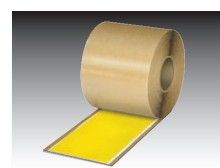
### Preformed Vent Boot

Accommodates most common pipes and conduits from 1" to 6"



### Yellow Safety Tape

Provides a warning to take caution around potential roof hazards



For more information on TPO accessories, contact your local GAF Representative or visit [gaf.com/TPOAccessories](http://gaf.com/TPOAccessories).

**GAF** EVERGUARD  
**TPO**

# SUPPORT SERVICES

Can Help To Make Your Roofing Project a Success!



## GAF Sustainability Mission Statement

GAF is the only roofing manufacturer to publish Health Product Declarations (HPDs) and Environmental Product Declarations (EPDs) for both TPO and ISO products, which means there are no secrets about the materials you're using on your roofing project.

- The Health Product Declaration (HPD) Open Standard consists of a defined Format and Instructions for reporting about the contents of building products along with the associated health and other related information.
- An Environmental Product Declaration (EPD®) is an independently verified and registered document that communicates transparent and comparable information about the life cycle environmental impact of products.



GAF EverGuard Extreme® TPO is also the first TPO to receive the Cradle To Cradle™ Certification (Silver Level) from the Cradle To Cradle Products Innovation Institute.



## The Best Roofing Contractors

GAF selects less than 2 out of every

100 roofing contractors for our factory-certified commercial contractor program. We provide them with extensive training tools and support to help ensure proper material installation, improve their processes, and enhance their capabilities. GAF guarantees that include coverage for workmanship are available through this elite contractor force.



## Certified Maintenance Professional (CMP) & Sustainable Roofing Council (SRC) Programs

Having a maintenance program in place for your roofing asset is critical for not only optimizing its overall longevity and performance but also helping ensure you have uninterrupted

guarantee coverage if issues arise. GAF Certified Maintenance Professionals (CMPs) are contractors who have not only the expertise to maintain and service your roof but also the exclusive ability to extend your Diamond Pledge™ NDL Roof Guarantee by 25%—via the WellRoof® Guarantee Extension\*, at no cost to you. Contact GAF Guarantee Services for details. Also, benefit from working with a member of the Sustainable Roofing Council (SRC). Educated in emerging green practices such as membrane and insulation recycling, LEED®, and the technology behind cool roofing, an SRC member is the right choice to install your new cool roofing system.



## Architectural Information Services

Architects and specifiers can access an entire team devoted to assisting you with the specification process. They can answer questions and provide assistance with master specification preparation and

other valuable activities at no charge to you. Call them toll free: 800-522-9224 or email AIS@GAF.com.

## Full-Time Field Services Team

Our nationwide team of Field Services Professionals helps ensure your new roof is installed right the first time. They are a full-time, professionally trained resource. Our team is a trusted source for information, installation training, and best-practice sharing to help prevent problems before they happen.



For more information about GAF sustainability, contact your local GAF Representative or visit [www.sustainableminds.com/GAF](http://www.sustainableminds.com/GAF).



# INDUSTRY-LEADING GUARANTEES

## • Diamond Pledge™ NDL Roof Guarantee

No dollar amount on your coverage; unlike competitive guarantees, provides true “edge-to-edge” coverage, with additional leak coverage for penetrations and metal components.\*\*

## • WellRoof® Guarantee Extension

Provides a 25% extension on a Diamond Pledge™ NDL Roof Guarantee when you participate in an annual inspection and preventative maintenance program with a GAF Certified Maintenance Professional.\*

## • All-American Pledge™ Roof Guarantee

The industry’s only guarantee that covers both steep- and low-slope roofing projects (in one guarantee) for single-source accountability—and your convenience.\*\*

MILS	EVERGUARD TPO		EVERGUARD EXTREME TPO	
	MECHANICALLY ATTACHED	FULLY ADHERED/ RHINO BOND®	MECHANICALLY ATTACHED	FULL ADHERED/ RHINO BOND®†
45	15 YEARS	20 YEARS		
50			20 YEARS	25 YEARS
60	20 YEARS	25 YEARS	25 YEARS	30 YEARS
70			30 YEARS	30 YEARS
80	25 YEARS	30 YEARS	30 YEARS	35 YEARS

\*WellRoof® Guarantee Extensions cannot exceed 35 years.

\*\*See applicable GAF roof guarantee for complete coverage and restrictions.

## Technical Help When It Matters

Our 1-800-ROOF-411 hotline is available to answer technical questions live. Our Technical team can answer questions regarding installation, codes, product approvals, roof system details, and other technical issues. They are a complete technical resource dedicated to supporting proper roof installation.

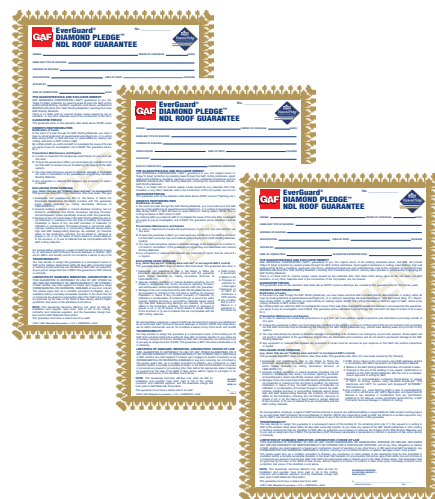


## What is CARE?

CARE (Center for the Advancement of Roofing Excellence) offers professional, non-biased educational programs to the roofing industry. Over 239,000 professionals in the USA, Canada &

Mexico have attended CARE courses!

CARE courses focus on how to avoid the most common mistakes made in roofing and roofing systems.



†RhinoBond® is a registered trademark of OMG.



For more information on guarantees, contact your local GAF Representative or visit [gaf.com](http://gaf.com).





Get results.

## Because failure is not an option.

GAF EverGuard Extreme® TPO has been named the industry's top-performing TPO membrane (and GAF standard EverGuard® TPO was named the second-best performing)! Visit [TPOresults.com](http://TPOresults.com) to see the independent test results, including how all the major TPO brands compared.

**GAF** EVERGUARD  
**EXTREME® TPO**

©2017 GAF 6/17 • #420 • 1 Campus Drive, Parsippany, NJ 07054

327934-0717

**1-800-ROOF-411**

***gaf.com*** COMEG120