

Input data

System of measurement		Metric
Input type		Coupling for electric motor
Input speed	[rpm]	1400
Output speed	[rpm]	93.33
Ratio (i=)		15
Frequency	[Hz]	50
Input options		IEC
Requested input power	[kW]	0.75
Service factor		2.1
Rated Power P1	[kW]	1.57

Output data

Gear unit F RT 60 B3 15 80 B14 AC 25

Type		RT - Worm speed reducers
Input type		F (Elastic coupling)
Size		60
Ratio (i=)		15
Input flange		B14
Input speed	[rpm]	1400
Output speed	[rpm]	93.33
Rated output torque	[Nm]	62.16
Service Factor		2.1
Efficiency		0.81
Inertia moment	[kgm ²]	0.00011

Gear unit configuration

Output shaft		Hollow output shaft
Fixing		Universal
Version		B3

Output radial and axial loads

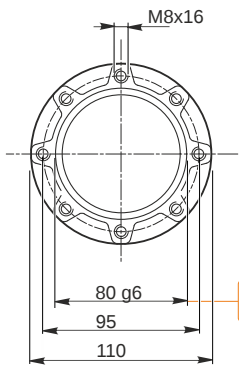
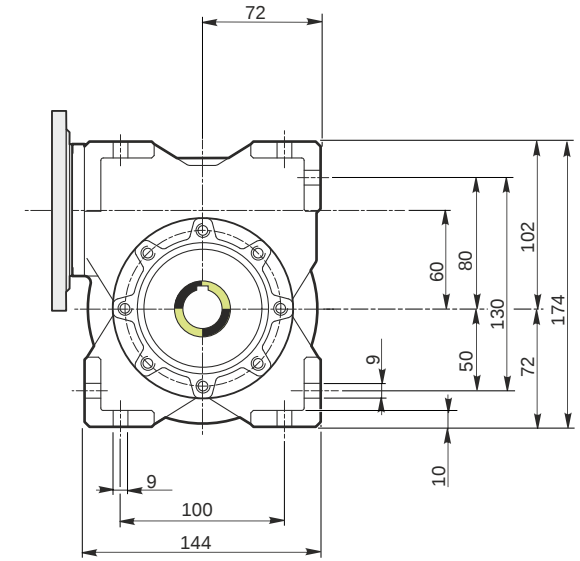
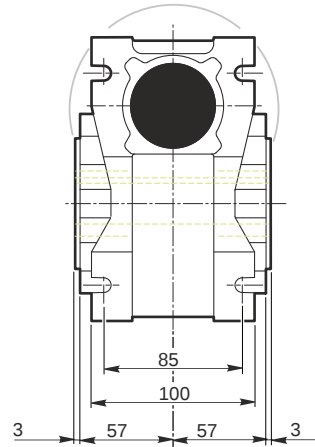
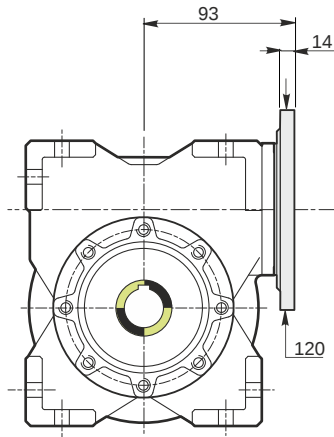
Ball bearings output radial load	[N]	2900
Taper bearings output radial load	[N]	3700
Ball bearings output axial load	[N]	580
Taper bearings output axial load	[N]	740

Accessories

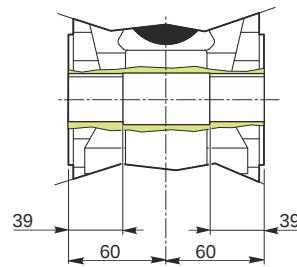
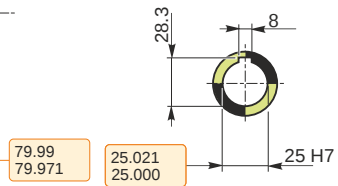
Hollow output shaft		AC 25
---------------------	--	-------

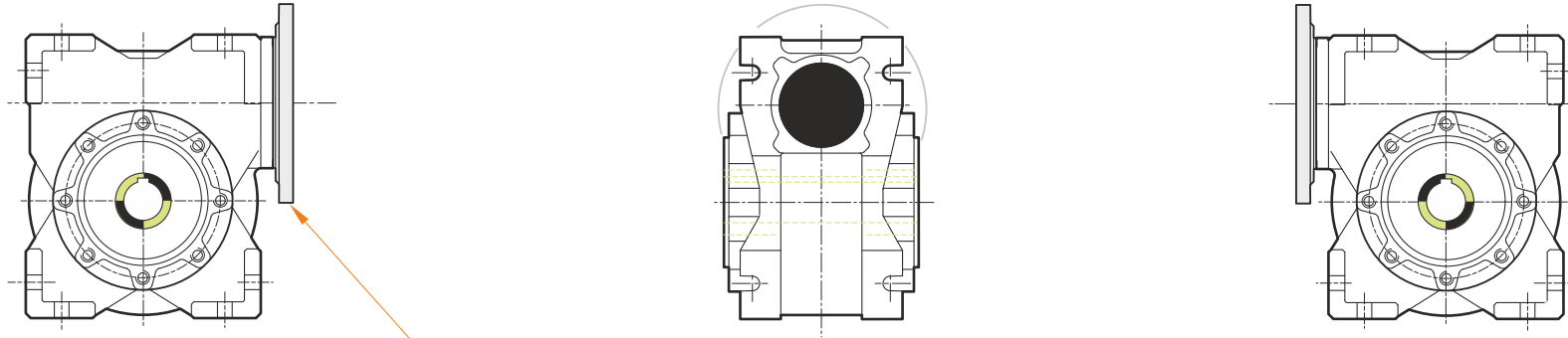
Electric motor coupling

Size		80 B4
Poles n.		4
Power	[kW]	0.75

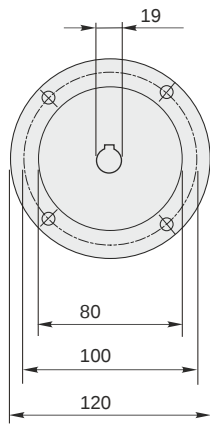


Hollow output shaft





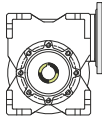
This gear unit is provided with an elastic coupling motor fitting



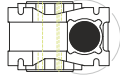
F RT 60 B3 15 80 B14 AC 25

Mounting positions

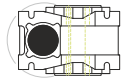
B3



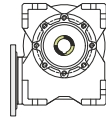
B6



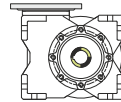
B7



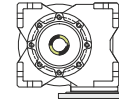
B8



V5



V6



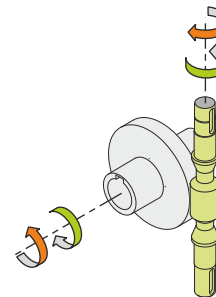
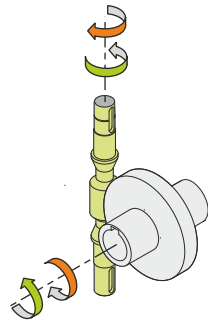
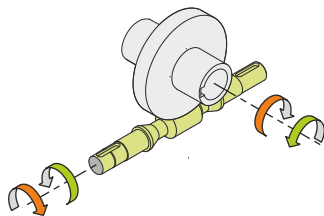
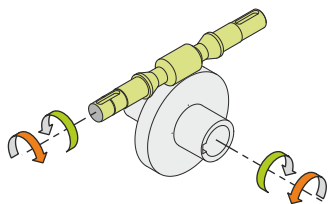
0.23



← Oil quantity [litres]

Lubricant type: Long life synthetic oil ISO VG320

Direction of rotation



Weight

Gear unit [kg] 6.5

Gearing data

Axial module	3.1
Number of starts	2
Lead angle	12° 55'
Pressure angle	20°

Backdriving

Static back-driving
Quick back-driving
Dynamic back-driving