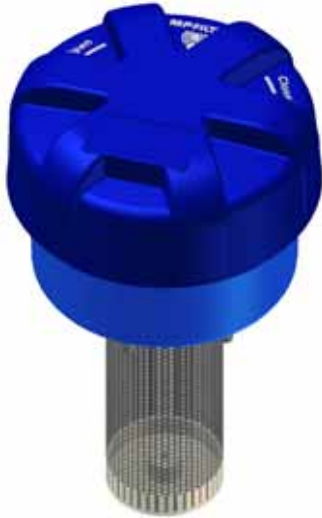


Series TAP 115

Nylon filler /
breather caps

Clogging indicator
option



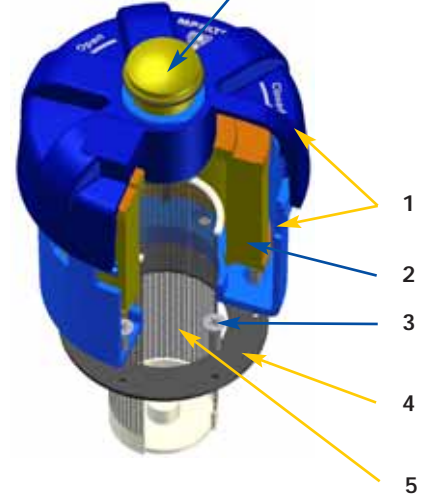
Example
TAP115

Length 1
Without Indicator



Example
TAP115

Length 2
With Indicator



TAP115 (Materials)

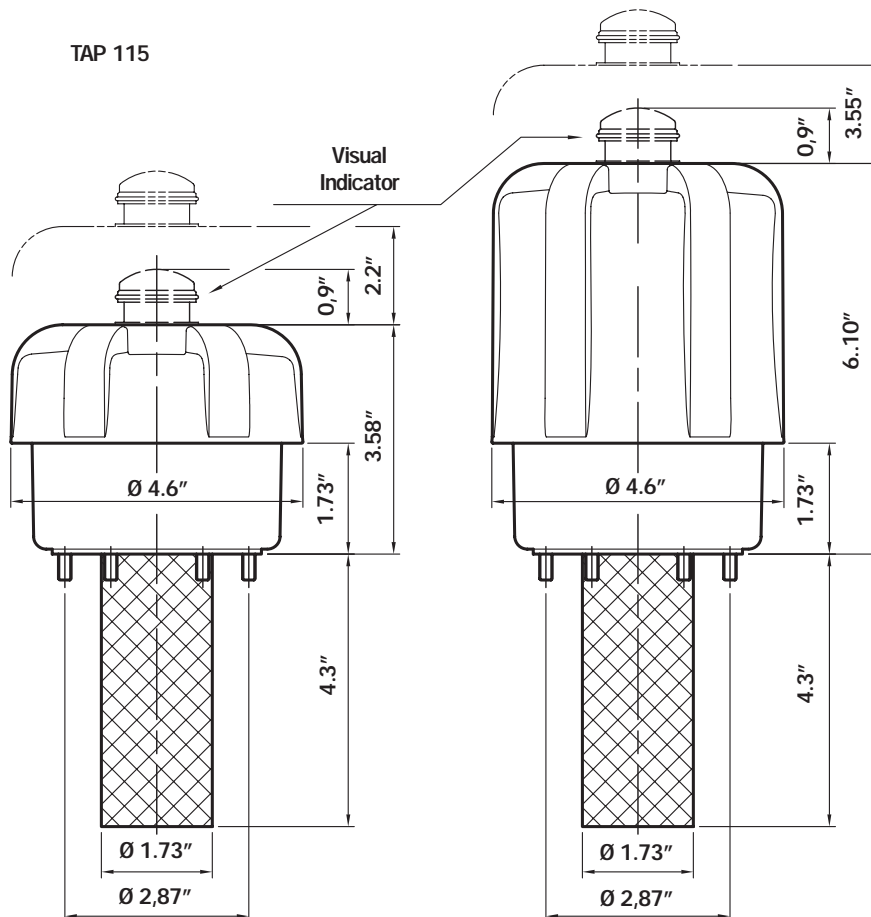
- 1 - Cover/Flange: Nylon
- 2 - Breather filter: Resin impregnated cellulose or Microfiber
- 3 - Seals: NBR
FPM
- 4 - Screws: Galvanized Steel
- 5 - Strainer: Galvanized Steel/Nylon

Clogging indicator

Set pressure: - 0.9 psi ± 10 %

Manual reset

Dimensions

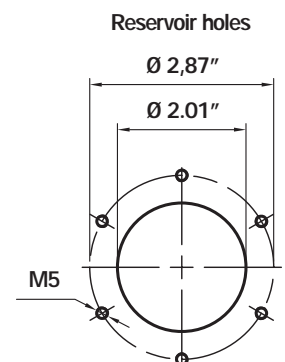


Flow rates with Δp : 0.30 psi

Filtration	cfm
3 μ m	64
10 μ m	71
Length 2	
Filtration	cfm
3 μ m	76
10 μ m	76

Weight

TAP 115 1: 1.01 lbs
TAP 115 2: 1.29 lbs

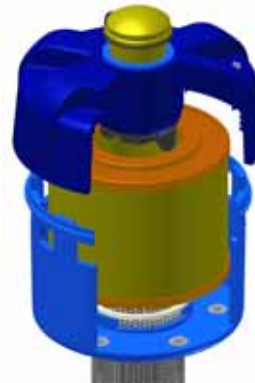


Changing the filter element in

TAP 115 series filler caps

1 Thoroughly clean the filler cap and adjacent parts before disassembly.

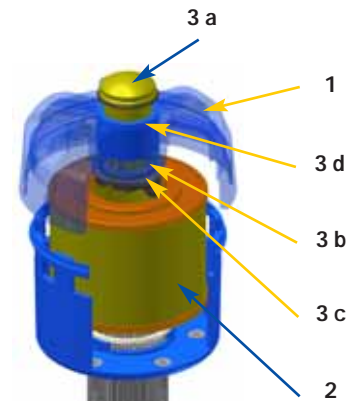
2 Unscrew and lift off the cover.



3 Replace the filter element and replace the cover and a hand a tighten (DO NOT OVER TIGHTEN).

TAP 115 spare parts

Item.	Description	Qty	Filler cap series TAP 115	
1	Complete unit	1	See order table	
2	Filter Element	1	See order table	
3	Indicator Kit	1	NBR 02005187	FPM 02005188
3a	Visual indicator	1	S62P01	
3b	Seal	1	O-R 3106 ID 1.05" X 103"	
3c	Indicator securing screw	1	01022670	
3d	O-R indicator	1	O-R 2112 ID 1.114" x 070"	



Ordering information

Filler series

TAP115

Example: TAP115

1	2	3	4	5	6	7
<input type="checkbox"/>	<input type="checkbox"/>	<input type="checkbox"/>	<input type="checkbox"/>	<input type="checkbox"/>	<input type="checkbox"/>	<input type="checkbox"/>
2	F	A03	A	1	B	P01

Filter element

A115

Example: A115

1	3	7
<input type="checkbox"/>	<input type="checkbox"/>	<input type="checkbox"/>
2	A03	P01

1 - Length

<input type="checkbox"/> 1
<input type="checkbox"/> 2

2 - Connection

<input type="checkbox"/> F	Flange
----------------------------	--------

3 - Filter element

<input type="checkbox"/> L10	Resin impregnated cellulose 10 µm
<input type="checkbox"/> A03	Inorganic microfiber 3 µm

4 - Seals

<input type="checkbox"/> A	NBR
<input type="checkbox"/> V	FPM

5 - Strainer

<input type="checkbox"/> 0	Without
<input type="checkbox"/> 1	With L= 4.8"

6 - Indicator

<input type="checkbox"/> A	Without
<input type="checkbox"/> B	Visual indicator

7 - Options

<input type="checkbox"/> P01	MP Standard
------------------------------	-------------