



BORMA WACHS®

Wood Professional **Cosmetics**



Decoration Line



For decades Borma Wachs has been involved in the wood-care and synthetic surface treatment, with sense of responsibility and constant commitment to follow three fundamental principles Quality, Flexibility, Reliability. Our company profile is characterised by dynamism in production capacity as merchantability and safety of our products.

As specialists in the wood professional cosmetic field, we aim to offer our costumers only the best.



IBR

Borma Wachs products are tested and approved by the Institute for Green Building in Rosenheim. The analyses performed certify our products are compliant in terms of VOC content, biocides, heavy metals, and radioactive materials, guaranteeing full eco-compatibility with Green Building principles. The company has always tried to understand the needs and the sensibility of customers, demanding sustainable and eco-sustainable treatments, deriving from renewable sources of raw materials, aiming to minimise impact on the environment and on the health of operators and people who live in the homes.



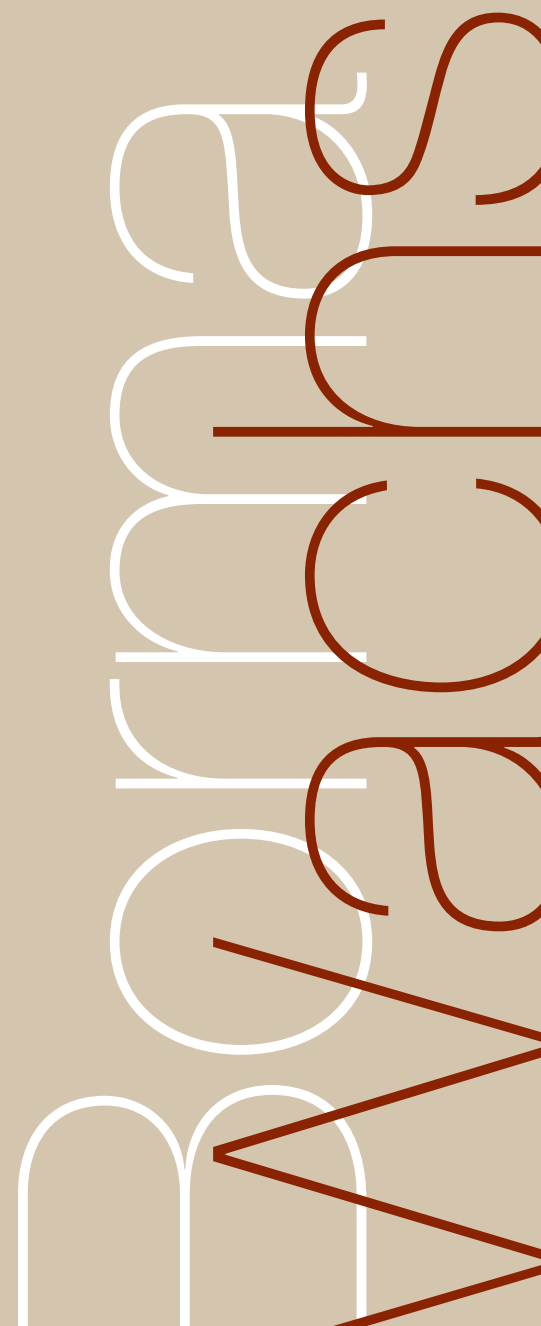
EN71-III

Eurofins Danish laboratories have recognised conformity of Borma Wachs oils with standard EN 71-III, relating to the migration of harmful heavy metals, guaranteeing the safety of the treatments in such a way that they can also be safe for use on finishes or repair of children's toys.



VOC FREE

All Borma Wachs products respect European standards relating to solvent vapour emissions, which are potentially dangerous, in the atmosphere, in total respect for the environment and the workers' health. With the new ECO PREMIUM – VOC FREE line, we are able to offer a new and uncompromising range, with 100% natural and biodegradable products, with a VOC content reduced to zero.



INDICE

Pag.2/3
Shabby Style

pag. 4
Shabby Provence

pag. 6/8
Creative Shabby cycles

Pag.10
Preliminary treatments

Pag.11/13
Technical complements

Pag. 14/16
Patinas and ageing products

Pag. 17/19
Finishes

Pag. 20
Technical accessories



BORMA WACHS®
Wood Professional Cosmetics

SHABBY STYLE

Borma products for decoration are developed and produced in Italy, land of art and architecture, with the well known passion for quality and a special attention for the easiness and pleasure in application, for professionals and decoration-lovers.

Decoration line shows a complete range of products for the decoration of interior surfaces in Shabby and Vintage style, in all its shades, in particular for furniture and wooden items.


Shabby-style scenes are generally characterized by an informal, relaxed and frivolous atmosphere. The decor is sometimes simple and minimal, sometimes more refined and rich of details.



The pastel colors dominate, with the various declinations of white, the ancient rose, the confetti, the celestial in the most classic style, with accents of deep blue and green, red and ochre for the country style, up to the sharp contrasts of orange and violet, sometimes smoothed by the gray, of the post-industrial style.

The recovery or reproduction of antiquarian and modern-day remains at the heart of all styles, from the most elegant to the most pop.

The floorings are preferably made of aged wood, treated with natural effect oil, while the walls can maintain a greater neutrality to highlight particularly luxurious furnishings or, in some cases, undress pastel plastering, and show the brick and concrete that well enclose the urban interior scenes.



The Provençal style most precisely refers to the scenery of the French lavender region and prefers in this tonality some well distributed details, alongside the indispensable white of furniture, fixtures, ceramics and fabrics. In every material, history, nature and simplicity are reflected: stone, raw or aged wood, the gilded paintings that are at the heart of Shabby's decoration, where scratches and abrasions are deliberately emphasized and reveal the passage of time, authentically historicized or artistically recreated.



On this white palette you can insert gold details, emphasize moldings and engravings, draw frames and more or less complex shapes. Then, by the scented nature of the Provençal countryside, we go to the baroque and the opulence of the palaces, where the antique is revealed by delicate patinas and thin craquelure.

The sober and minimalist new-country of the Nordic countries, where light wood accompanies striking shades, no ripples and no ornaments, the decoration is tightened to the maximum and is strictly functional, for places that must be easy and extremely comfortable, also in their look. The surfaces are treated with natural waxes and smooth, full, naturally opaque coatings.



In more contemporary and metropolitan interpretations, the taste of the Shabby style turns on purple, orange, and turquoise. The lines soften by bringing the Sixties into an extremely active and lively dimension.

Gold leaves room for iron and rust, ceramic becomes copper, linen and cotton turn into velvet and hemp, with unexpected contrasts. The clean Provence light turns into the mysterious glow of urban periphery. Here the aging of the surfaces becomes violent: the painting is torn from its original support, the bulbs reflect on glossy paints and patinas become dense and dark.

No creative ambition is too high, no alternative is excluded. Borma Decoration line accompanies the applicator from the project to the result: quality and beauty. A result that you see and live.

SHABBY PROVENCE

Decorative Chalk-paint Shabby Provence

The waterbased paint Shabby Provence, thanks to its high solid content and to natural gypsum, allows the largest variety of applications, keeping a matt look and a soft touch. Its thickness is ideal to make relief effects with irregular brush strokes and overlapping colors. Shabby Provence is characterized by high adhesion properties on any background; therefore, it can be used to refurbish old furniture avoiding any preliminary paint removal, applying thick single layers. Specific for the decoration of interiors, in combination with other complementary products and thanks to the variety of standard colours, Shabby Provence provides finishings of great elegance and modernity with maximum creative freedom and ease of use. Shabby Paint is ideal for brush applications. After proper dilution, it can be used also by spray, or when thickened, it can be applied by spatula. Suitable for wood, gypsum, plaster and other porous backgrounds.



Characteristics:

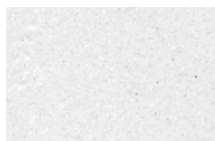
Dilution: the product is ready to use. It can be diluted with water (5-40%) depending on the needs.

Drying time at 20°C, 50%RH: 30-60 min dust free, 3-12 hrs for complete drying, depending on the applied quantity.



Code	Cap.	Pack.
6570XX.125	125 ml.	06 pcs.
6570XX	375 ml	6 pcs.
6571XX	750 ml.	6 pcs.
6572XX	2,5 Lt.	2 pcs.
6573XX	5 Lt.	2 pcs.

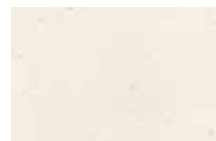
Shabby Provence colors



SNOW WHITE 50



GREYISH WHITE 822



IVORY 08



CRETE WHITE 9001



AGATE LIGHT GREY 100



SILK GREY 7014



LIGHT BLUE GREY 2005



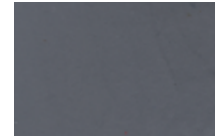
GREY 101



DARK GREY 107



AMBER GREY 109



SMOKE GREY 152



ANTHRACITE 145



BLACK 60



TURTLEDOVE 116



SAND YELLOW 129



PASTEL YELLOW 1034



OXIDE YELLOW 120



LEMON YELLOW 119



LIGHT OLIVE GREEN 81



OLIVE GREEN 31



SAGE GREEN 133



SPRING GREEN 132



MINT GREEN 130



FOREST GREEN 137



DEEP BLUE SKY 142



SKY BLUE 144



AQUAMARINE BLUE 150



DARK BLUE 148



VIOLET 127



BRICK RED 128



CORAL RED 125



ANTIQUÉ PINK 126



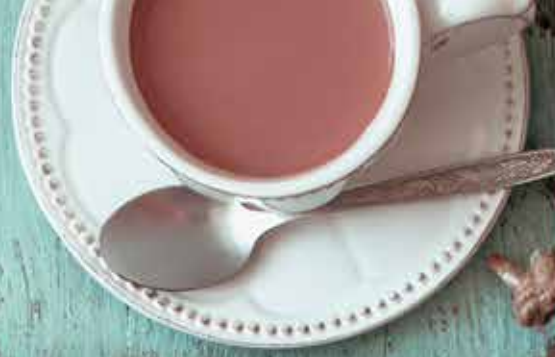
PINK 126



ORANGE IBISCUS 122



153 PROVENCE BLUE



BORMA WACHS®

CHOOSE
YOUR STYLE





Creative Shabby cycles



1

SHABBY PROVENCE + FRENCH GYPSUM

By adding French Gypsum it's possible to increase the viscosity of Shabby paint. The higher thickness of the product enhances the brush strokes and relief effects in general, with pastel colours.



2

SHABBY PROVENCE + SOFTWAX

To get the "scratched-lacquer effect" applied Softwax stick in some areas. Spread the Shabby paint and let dry. Where Softwax was applied, the dry film of Shabby can be easily removed using a spatula or some abrasive paper (grit 280-320) creating the scratched effect. Borma Softwax does not contain paraffin, therefore the surface can be overvarnished without adhesion problems.

We advise to choose for the Softwax stick a colour in contrast with the background. This will help to better manage the application.



3

HOLZ ANTIX 2008 + SHABBY PROVENCE

To get the effect of an aged lacquer apply Holz Antix 2008 on raw wood; let dry for 1-6 hrs, then apply Shabby Provence. The tannin that has been extracted from Holz Antix will provide to Shabby paint a natural ancient look with a delicate brown shade. This procedure is ideal for oak and other woods with high content of tannins.



4

SUPER WOOD SEALER + SHABBY PROVENCE

On the contrary, here, the preliminary application of Super Wood Sealer prevents stains caused by wood tannins in case of application of waterbased products like Shabby Provence. After the drying of Super Wood Sealer, apply Shabby Provence with no fear of colour changes.



5

SHABBY PROVENCE + WOOD SEALER

Shabby paint make a film which is naturally porous. To seal the surface that has been painted with Shabby, protecting it, but keeping its natural matt effect, apply Wood Sealer.



6

SHABBY PROVENCE+ MOBILACK

When a higher protection with noticeable decorative effect is needed, after the complete drying of Shabby Provence, apply Mobilack, waterbased high resistance lacquer for furniture, available in all sheens from deadmatt to glossy. Mobilack is recommended for frequently used items, like chairs and tops.



7

SHABBY PROVENCE + DEKORWACHS

Decorative wax Dekorwachs, based on beeswax and carnauba wax, coloured with mineral pigments, applied on surfaces that have been painted with Shabby Provence, provides a special vintage effect, giving also a good protection.



8	SHABBY PROVENCE + ANTIKWACHS	The special wax Antikwachs, used after Shabby Provence, provides a warm patina effect, offering also a good protection level.
---	-------------------------------------	---



9	SHABBY PROVENCE + ANTIK PATINA	Antik Patina is a special product for antique effect surfaces. It can be used with any finishing, deeply penetrates in porous surfaces and in grains, providing warm and natural patina effects. Antik Patina is concentrated: to get smoother effects dilute with Solvoil 06.
---	---------------------------------------	--



10	SHABBY PROVENCE+ LIMING WAX	Liming wax is a natural wax enriched with minerals, special for white patina or white decapé effect. To enhance the decapé effect it is possible, after Liming wax, to apply subsequently a transparent wax (like Antikwachs or Wax Oil 7030) to remove the excess of white patina strongly emphasizing the grain and the shapes, giving also a further protection.
----	------------------------------------	---



11	SHABBY PROVENCE + GILDING PATINA	Gilding Patina is a metal-effect wax, very easy to use, in three shades (gold, silver, ducat gold). It ennobles decorations with pleasant metallic reflections.
----	---	---



12	SHABBY PROVENCE + SHABBY PROVENCE	By overlapping or mixing different colours of Shabby Provence it is possible to get the greatest number of colour-effect.
----	--	---





Creative Shabby cycles



1

**SHABBY PROVENCE +
WOOD SEALER +
SOLVENT BASED GOLDSIZE+
IMITATION GOLD LEAF+
ZAPON LACK**

An unusual application of metal leaf to easily get an astonishing decapé finish. The use of Imitation Bronze Leaf on a 150 Blue Shabby background is absolutely charming.



2

**SHABBY PROVENZALE +
SOFT WAX+
SHABBY PROVENCE +
ANTIK PATINA +
HARD FURNITURE OIL**

The classical scratched effect of Shabby Style can be realized combining more colours, different or similar. To complete the finish and enhance the antique look, apply Antik Patina and protect with Hard Furniture Oil.



3

**HOLZANTIX 2008 +
MOBILACK +
SHABBY PROVENCE +
HARD FURNITURE OIL**

Suitable also for large areas, Shabby paint and the other complementary products for decoration can be used for several artistic uses, like in this case, to realize astonishing effect in full contemporary trend.



4

**SHABBY PROVENCE+
DEKORWACHS +
HARD FURNITURE OIL**

The special thickness of Shabby paint is suitable for the impression of 3d decoration, for example using 3d wallpapers. Waxes underline the shapes with delicate colour shades.



5

**SHABBY PROVENCE +
DEKORWACHS +
HARD FURNITURE OIL**

Here is an example of a 3d application of Shabby paint, that can be applied by dabbing it with a brush or an old sponge. With a coloured wax and a light sanding the 3d effect is enhanced.



6

**SHABBY PROVENZALE+
IMITATION GOLD LEAF +
ANTIK PATINA +
HARD FURNITURE OIL**

This special craquelé effect is made with Imitation Gold, Silver or Bronze leaf, without any goldsize. The choice of the colour of the background, in contrast or not, can enhance the different metal type.

BORMA WACHS®

NO LIMIT TO CREATE
YOUR WORLD



PRELIMINARY TREATMENTS

Basecoat – Topcoat with natural effect NATURAQUA WOOD SEALER

It is a waterborne acrylic insulator, recommended also as natural-effect finish for raw wood or Shabby paint effects. It provides a matt and invisible finish, non-filming, that does not alter the colour of the background. In case, it can be overcoated with Mobilack to increase the resistance of the surface.



Recommendations for application:

Apply by brush or by spray. If used as fixing lacquer for Shabby paint, please verify that it is completely dry before the application, to avoid removal phenomena.



Customizable with Borma Color System



Code	Cap.	Pack.
NAT4090	750 ml	06 pcs.
NAT4091	5 Lt	02 pcs.
NAT4090.10	10 Lt	
NAT4090.20	20 Lt	

Anti-tannin Basecoat NATURAQUA SUPER WOOD SEALER

Waterborne insulating basecoat with anti-tannin effect. It prevents brown-yellow stains caused by the application of waterborne products on wood with high content of tannins, keeping the colour of the finishing. Especially recommended for Shabby Provence other waterbased white finishes. Available in white and transparent.



Recommendations for application:

Apply uniformly by brush or spray on raw wood. For very accurate finishes it is advisable to lightly sand and if necessary consider a second coat before the application of other products.



Customizable with Borma Color System



WHITE		
Code	Cap.	Pack.
NAT4090B-S	750ml	06 pcs.
NAT4091B-S	5Lt	02 pcs.
NAT4090.10B-S	10Lt	
NAT4090.20B-S	20Lt	

TRANSPARENT		
Code	Cap.	Pack.
NAT4090-S	750ml	06 pcs.
NAT4091-S	5Lt	02 pcs.
NAT4090.10-S	10Lt	
NAT4090.20-S	20Lt	

Universal stain HOLZFARBE

It is a liquid universal stain, ideal to tint raw wood of furniture or other interior surfaces. It replaces the traditional aniline, avoiding preliminary preparations and the inhalation of harmful powders. The product is concentrated and can be used as it is to get very deep colours or can be diluted up to a ratio of 1:6 with water, spirit or thinner for nitro for more delicate effects. It provides anyway great deepness and brightness. It can be used to tint clear lacquers.



Recommendations for application:

Add some drops to the clear product to be coloured, to avoid excesses. Always make a preliminary test to verify the final effect.



Code	Cap.	Pack.
3000	250 ml	12 pcs.
3050	500 ml	12 pcs.
3100	1 Lt	12 pcs.
3005	5 Lt	02 pcs.

Cartella colori Holzfarbe

120 Yellow



134 Green



122 Orange



125 Fire red



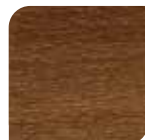
52 Oak



17 Teak



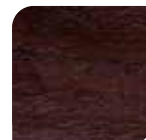
53 Clear walnut



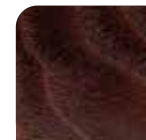
62 Mahogany



63 Dark walnut



58 Rosewood



140 Blue



60 Black



Available: Cherry 30, Medium walnut 59 e Wengè 146



Softwax sticks QUICKFILLER

Born to repair damages and other small damages, Quickfiller is extremely easy to use and ideal to realize the scratched effects in Shabby style, replacing the less suitable candles. Based on wax and mineral pigments, free from solvents, silicones and other oily materials, it can be overvarnished with all kind of lacquers.

Available in more than one hundred colours.



Recommendations for application:

Apply in thin or thick layers to easily tear away Shabby paint and create more or less evident scratched effects.



Code	Cap.	Pack.
10XX	Stick da 30 gr.	10 pcs.
10XXKL	Stick da 15 gr.	20 pcs.
10XXBL	Stick da 20 gr.	12 pcs.

Natural mineral powder FRENCH GYPSUM

Based on extra fine mineral powders, French Gypsum is generally used in gilding technique and in traditional painting to get extremely smooth basecoats. In Shabby decoration it can be added to Shabby Provence, in the desired quantity, to increase its thickness. With a pasty texture, almost like a putty, Shabby paint can be used to obtain reliefs and other beautiful 3d effects.



Recommendations for application:

Add French gypsum to Shabby paint in small quantities, possibly pouring it little by little through a sieve, till you get the aimed thickness.



Code	Cap.	Pack.
CD06563	1 Kg.	6 pcs.
CD06566	25 Kg.	

Natural glue, in pearl form BONE GLUE

It is a brown-yellow solid in pearl form, obtained by animal extracts, traditionally used by restorers and carpenters to as strong and elastic glue. In Shabby decoration it can be used as a basecoat on raw or tinted wood, before the application of Shabby paint, to get a fully natural craquelé effect. It is used after melting in hot water and dilution.



Recommendations for application:

Apply the product, melted in hot water (1:10) as basecoat on raw or tinted wood before Shabby Provence to get the craquelé effect.



Code	Pack.
CD0COLLAP	1 Kg.
CD0COLLAP25	25 Kg.

Glue for gilding SOLVENT BASED GOLDSIZE

It is a special glue for the application of gold/silver/bronze leaf, imitation or genuine. Fast drying, it is recommended for experienced users or for the gilding of small areas. Suitable for interiors and exteriors.



Recommendations for application:

Apply uniformly on a suitable basecoat. When the surface becomes sticky it is possible to apply the metal leaf.



Code	Cap.	Pack.
CD06830	250 ml.	06 pcs.
CD06831	500 ml.	06 pcs.
CD06832	1 Lt.	06 pcs.
CD06833	5 Lt.	02 pcs.
CD06834	10 Lt.	
CD03835	20 Lt.	



TECHNICAL COMPLEMENTS

Glue for gilding WATERBASED GOLDSIZE

It is a waterbased acrylic glue, special for the application of gold/silver/bronze leaf, imitation or genuine. With an ideal open time, it is recommended also for large areas.
Only for interiors.



Recommendations for application:

Apply uniformly on a suitable basecoat. When the surface becomes sticky it is possible to apply the metal leaf.



Code	150 ml.	Pack.
CDO6801	150 ml.	06 pcs.
CDO6802	500 ml.	06 pcs.
CDO6803	1 Lt.	06 pcs.
CDO6804	5 Lt.	02 pcs.
CDO6805	10 Lt.	
CDO6806	25 Lt.	

IMITATION GOLD/SILVER/BRONZE LEAF

Extra thin leaves made of pure metals or metal alloys, specific for traditional gilding or artistic decorations in general. Available in the practical booklets in gold, silver and bronze versions.



Recommendations for application:

Apply the goldsize (waterbased or solvent based). Handle with gloves to avoid unwanted oxidation marks. Press the leaf on the surface with a cotton wad or as soft buffer. Remove the leaf in excess using a soft brush. All residuals and small pieces of leaf in excess can be kept for further applications



Code	Dim. Imitation gold leaf "2,5"
CDO66006	25 leaves book 14 x 14 cm
CDO66006.500	500 leaves 16x16 cm
CDO66006.10000	10.000 leaves 16x16 cm

Code	Dim. Imitation Silver leaf "2,5"
CDO66A07	25 leaves book 14 x 14 cm
CDO66A08	500 leaves 16x16 cm
CDO66A09	5.000 leaves 16x16 cm

Code	Dim. Imitation Bronze leaf "2,5"
CDO66B01	25 leaves book 14 x 14 cm
CDO66B02	500 leaves 16x16 cm

IMITATION GOLD/SILVER ROLL

Extra thin leaves made of pure metals or metal alloys, in the practical 50m roll, available in different sizes and in gold and silver versions.

This special form is ideal to reduce waste and speed up work in linear decorations.



Recommendations for application:

Apply the goldsize (waterbased or solvent based). Handle with gloves to avoid unwanted oxidation marks. Press the leaf on the surface with a cotton wad or as soft buffer. Remove the leaf in excess using a soft brush.



Code	Dim. Imitation Gold roll "2,5"
CDO66OR11	1 cm x 50 m
CDO66OR12	2,5 cm x 50 m
CDO66OR13	5 cm x 50 m
CDO66OR14	10 cm x 50 m
CDO66OR15	15,8 cm x 50 m

Code	Dim. Imitation Silver roll
CDO66AR11	1 cm x 50 m
CDO66AR12	2,5 cm x 50 m
CDO66AR13	5 cm x 50 m
CDO66AR14	10 cm x 50 m
CDO66AR15	15,8 cm x 50 m



IMITATION GOLD/SILVER/COPPER POWDER

Extra fine metal powder (alloys or pure metals), ideal for metal effects in decoration. Easy to use, they can be mixed to each other, allowing to get any colour shades.

The powders can be added in the wanted quantity to several products of Borma range: oils (for example Hard Furniture Oil), waxes (for example Holzwachs, Antikwachs, Wax Oil 7030) and lacquers (for example Shellac Polish). This is how to get metal patinas and finishes, to be applied by brush or rag, to complete the decoration of interior surfaces.



Recommendations for application:

We recommend to prepare the necessary quantity of product time after time. Do not mix with waterbased products.

Copper powder		
Code	Cap.	Pack.
CD04643	250 gr.	06 pcs.
CD04643.1	1 Kg.	06 pcs.
CD04643.25	25 Kg.	

Imitation silver powder		
Code	Cap.	Pack.
CD04645	250 gr.	06 pcs.
CD04645.1	1 Kg.	06 pcs.
CD04645.25	25 Kg.	

Imitation Ducat Gold powder		
Code	Cap.	Pack.
CD04644	250 gr.	06 pcs.
CD04644.1	1 Kg.	06 pcs.
CD04644.25	25 Kg.	

Imitation rich Gold		
Code	Cap.	Pack.
CD04642	250 gr.	06 pcs.
CD04642.1	1 Kg.	06 pcs.
CD04642.25	25 Kg.	

Extra strong wax remover

RADIKAL ABWACHSER

It is a professional product based on pure, non-corrosive thinners.

Ready to use is ideal for the cleaning of all wooden surfaces. In a quick and effective way it dissolves the old layers of wax removing dirt from the wood, not damaging the original lacquers. In decoration it is used to remove the residuals of waterbased goldsize and antique the surfaces treated with gold leaf in a gentle, natural and refined way.

Perfect also to clean the brushes.

Available also in spray version.



Recommendations for application:

To antique golden surfaces, rub it with a cotton wad and some product till the wanted effect is achieved.

For the intensive cleaning it is possible to use the product with a rag or with steel wool, depending on the strength of the layers that have to be removed.

Code	Cap.	Pack.
0042	250 ml.	12 pcs.
0043	500 ml.	12 pcs.
0044	1 Lt.	12 pcs.
0045	5 Lt.	02 pcs.
0046	400 ml. spray	12 pcs.



PATINAS AND AGEING PRODUCTS



Ageing vehicle HOLZ ANTIX 2008

Waterbased, this colourless vehicle is used on woods with high content of tannins to get an instant aged effect. The intensity of the effect, that is shown by the darkening of the colour, depends on the natural content of tannins of the wood. It is not a stain. It can be tinted with the special waterbased Mordant Concentrates.

If overcoated with waterbased products it can show yellowing phenomena. When this yellowing is not wanted, we recommend to apply oil based finishes, waxes or traditional products.



Recommendations for application:

Apply the product on raw wood using synthetic brushes or sponges. We always recommend a preliminary test to verify the final effect, that is mainly related to the wood. To get a lighter effect it is possible to dilute the product in water, in the desired ratio.



Code	Cap.	Pack.
3720	1 Lt.	12 pcs.
3721	5 Lt.	02 pcs.
3722	25 Lt.	
3723	120 Lt.	

Dyes MORDANT ACTIVE STAIN CONCENTRATES

They're liquid dyes in water solution, specific for colouring raw wood. They're used in combination with the different waterbased vehicles in Borma range and in particular with Holz Antix 2008 and TP1050 Vehicle for Positive Stains. They provide great deepness and brightness in colours.

The colours are available in 100 ml sized standard bottles. The final colour depends on the wooden background.



Recommendations for application:

To avoid unwanted colours, it is recommended to add the concentrates to the clear vehicle drop by drop till the right intensity is achieved. Always make a preliminary test to verify the final effect.



Code	Cap.	Pack.
CW2000	100 ml	06 pcs.

Colour chart



14/56 ANT Ivory



14/6 ANT Beige



14/9 ANT Silica



14/37 ANT Silk grey



14/12 ANT Olive



14/38 ANT Quartz



14/10 ANT Stone



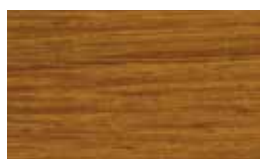
14/4 ANT Aged Brown



14/2 ANT Aged



14/14 ANT Cognac



14/1 ANT Natural



14/46 ANT Dark aged Brown



14/21 ANT Dark



14/22 ANT Burnt wood



14/13 ANT Aged pink



14/44 ANT Rust



14/47 ANT Dark rust



14/17 ANT Colonial rosewood



14/53 ANT Green



14/57 ANT Emerald



Ageing Patina ANTIQUÉ PATINA

Liquid patina based on judaic bitumen, dark brown. Traditionally used in decoration and gilding, it can be applied on raw wood as well as on Shabby paint-finished surfaces, gold leaf and other finishes. Patina is ready to use, but to obtain lighter effects it can be diluted with Solvoil 06.



Recommendations for application:

On plain surfaces apply the patina by brush or rag and remove the excess with a clean cloth. The waiting time before the removal influences the intensity of the effect. The product can be mixed with traditional Borma waxes like Antikwachs and Wax Oil 7030.



Code	Cap.	Pack.
3560	500 ml.	12 pcs.
3561	1 Lt.	12 pcs.
3562	5 Lt.	02 pcs.
3559	Spray 400ml.	12 pcs.

Ageing Patina BITUMINOUS BEESWAX

Waxy patina in paste form that combines pure and carnauba wax with Bitumen, for the ageing of golden surfaces and in general decorated items. It provides a warm tone and a soft finish, with beautiful patina effects. It decorates, nourishes, regenerates, protects and polishes the treated surfaces,



Recommendations for application:

Apply in thin layers and polish with a wool cloth. To increase the antique effect on carvings and give more deepness to mouldings, apply accurately in cavities using a brush.



Code	Cap.	Pack.
CD06720	300 ml.	06 pcs.
CD06721	1 Lt.	06 pcs.
CD06721.20	20 Lt.	

Restoring wax ANTIkwAX

Based on beeswax and carnauba wax, high solid, this especially rich wax is recommended to nourish and protect ancient wood, as well as for the finishing of porous surfaces like those which have been decorated with Shabby Provence. It provides extremely smooth surfaces and, when coloured, soft and natural patina effects. Available in the indicated shades.



Recommendations for application:

Apply in thin layers and polish with a wool cloth. The different colours can be mixed with each other. Clear Antikwax can be used to reduce the intensity of the colour of other decorative waxes of Borma range.



Code	Cap.	Pack.
3420XX	500 ml.	06 pcs.
3450XX	5 Lt.	02 pcs.

Colour chart Antikwachs





PATINAS AND AGEING PRODUCTS

White wax LIMING WAX

Based on bees' and carnauba wax and enriched with mineral white pigments, it decorates and protects raw or treated surfaces, enhancing the grain and other reliefs. Ideal for open-pore surfaces to make a natural white decapé effect or for patina effects on flat surfaces.



Recommendations for application:

Apply in thin layers by brush or rag and polish with a wool cloth. The product is ideal to be applied on light colours of Shabby Paint, but provides beautiful effects also on more intense colours and on natural wood.

Code	Cap.	Pack.
4580	500 ml.	06 pcs.
4582	5 Lt.	02 pcs.

METAL-EFFECT WAX

Gilding patina

Based on bees and carnauba wax with metal powders, this patina is ideal for decoration and as a complement for gilding works. Easy to apply also on difficult areas (carvings, reliefs, joints), it is available in silver, gold and ducat gold shades.

Recommendations for application:

Apply in thin or medium layers, depending on the aimed effect, by brush or rag, and polish with a wool cloth. It can be applied over any Shabby finish and also on golden surfaces as reviving maintenance product.



Code	Colore	Cap.	Pack.
CD06711	Gold	300 ml.	06 pcs.
CD06715	Silver	300 ml.	06 pcs.
CD06712	Ducat Gold	300 ml.	06 pcs.

Pigmented decorative wax

DEKORWAX

Based on bees and carnauba wax, coloured with mineral pigments, Dekorwax is ideal to emphasize Shabby effects, enhancing the structure of the surface with delicate pastel shades or it can even be applied on raw wood to enhance the grain with a natural and soft colour effect.

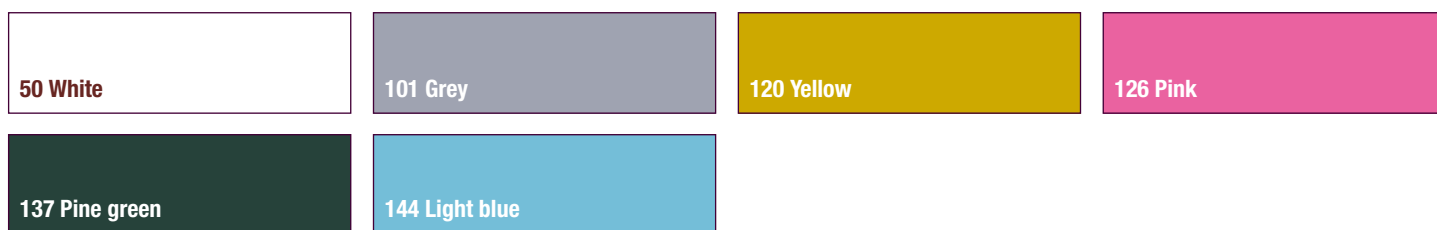


Recommendations for application:

Apply in thin layers by brush or rag and polish with a wool cloth. The product is ideal to be applied on light colours of Shabby Paint, but provides beautiful effects also on natural wood.

Code	Cap.	Pack.
4585XX	500 ml.	12 pcs.
4586XX	1 Lt.	12 pcs.

Colour Chart Dekorwachs



Fast drying metal patina

FAST PATINA

Professional product recommended for patina or decapé effects. Very fast drying, it is suitable for any kind of basecoat: polyurethane, acrylic, UV or lacquered, as well as shellac polish.

Available in shades: Gold 11, Gold Leaf 11/F, Warm Gold 12, Cold Gold 19, Silver 15, Silver Leaf 15/F, Copper 20, White 50, Black 60.

Recommendations for application:

Usually applied by spray, it can be applied also by brush on small surfaces. After a few minutes the patina is dry and can be removed in the wanted areas using an abrasive pad, steel wool or fine sandpaper.

For very accurate finishings a transparent intermediate layer, basecoat or topcoat, is recommended before the application of Patina.



Code	Cap.	Pack.
CD07002XX.125	125ml	06 pcs.
CD07002XX	1 Lt.	06 pcs.
CD07002XX.5	5 Lt.	02 pcs.
CD07002XX.25	25 Lt.	



Waterborne lacquer for furniture NATURAQUA MOBILACK

Waterborne lacquer, ecologic and easy to apply, suitable for the protection of raw or Shabby-treated wood. It grants an excellent mechanical resistance and is therefore recommended to protect decorative effects on common use surfaces, without altering the colour of the background. With the use of its catalyst NAT4100-2K in ratio 10:1, the level of protection is even increased. Available in the different sheens, from deadmatt to glossy: 0-5, 10-20, 30-40, 50-60, 80-90.



Recommendations for application:

Apply only after the complete drying of the previous layers to avoid removal phenomena.

+5°C
+30°C



Code	Cap.	Pack.
NAT4122-XX.125	125 ml	06 pcs.
NAT4122-XX	1 Lt.	06 pcs.
NAT4123-XX	5 Lt.	02 pcs.
NAT4124-XX	10 Lt.	
NAT4125-XX	20 Lt.	

Waterborne lacquer for furniture INVISIBLE TOUCH

It is a waterborne lacquer with "invisible" effect. It provides a matt look and does not alter the natural appearance of raw wood or surfaces treated with Shabby Provence, granting a good level of protection.



Recommendations for application:

Apply if possible by spray after the catalysis with NAT4100-2K, catalyst for waterborne lacquers.

+5°C
+30°C



Code	Cap.	Pack.
NAT4130.125	150 ml	06 pcs.
NAT4130	1 Lt.	06 pcs.
NAT4131	5 Lt.	02 pcs.
NAT4132	10 Lt.	
NAT4133	20 Lt.	

Oil for furniture HARD FURNITURE OIL

Based on natural oils and enriched with high quality resins and waxes, it provides a good protection against scratches and spots, with a pleasant natural satin effect. Suitable to protect raw wood or Shabby Provence with a delicate amber tone. Available also in the matt, waxy version.



Recommendations for application:

It can be applied by brush, rag, handroller or spray. For a natural and accurate effect it is recommended to remove the excess using a soft cloth. Let dry completely before using the treated item.



53160-1/2
68861-1



Hardwax furniture oil		
Code	Cap.	Pack.
4907	1 Lt.	06 pcs.
4908	5 Lt.	02 pcs.
4914	15 Lt.	
4909	20 Lt.	

Hard furniture oil		
Code	Cap.	Pack.
4902	1 Lt.	06 pcs.
4903	5 Lt.	02 pcs.
4902.10	10 Lt.	
4904	20 Lt.	

Waxy blend for furniture HARD WAX OIL 7030

Base on natural waxes and oils, the product combines the easiness in application of waxes and the resistance of oils. Colourless, it is used in decoration to shade the effects realized with pigmented waxes, providing to the surfaces more protection and resistance.



Recommendations for application:

Spread by rag or brush in thin and uniform layers. In case, polish with a soft cloth.



Code	Cap.	Pack.
2960.125	125 ml.	06 pcs.
2960	750 ml.	06 pcs.
2965	2,5 Lt.	02 pcs.
2965.5	5 Lt.	
2970	10 Lt.	

Shellac lacquer SHELLAC POLISH

Traditional lacquer, ready for use, based on natural high quality shellac and available in the versions: Blond, with natural waxes, and wax-free in colours Orange, Ruby, Black and Transparent. Beside classical shellac finishes, characterized by extreme brightness and smoothness to the touch, it can be used as an insulator and as a protecting topcoat after leafing.



Recommendations for application:

Traditionally applied by buffer for the finishing of furniture, this lacquer can be spreaded also by brush to insulate and protect small areas.

Blond french polish		
Code	Cap.	Pack.
0001	150 ml.	12 pcs.
0002	500 ml.	12 pcs.
0003	1 Lt.	12 pcs.
0004	5 Lt.	02 pcs.

Shellac polish - dewaxed			
Code	Tipologia	Cap.	Pack.
0002AR	- Orange	500 ml.	12 pcs.
0003AR	- Orange	1 Lt.	12 pcs.
0004AR	- Orange	5 Lt.	02 pcs.
0002RU	- Ruby red	500 ml.	12 pcs.
0003RU	- Ruby red	1 Lt.	12 pcs.
0004RU	- Ruby red	5 Lt.	02 pcs.

Shellac polish - dewaxed			
Code	Tipologia	Cap.	Pack.
0002NE	- Black gannon	500 ml.	12 pcs.
0003NE	- Black gannon	1 Lt.	12 pcs.
0004NE	- Black gannon	5 Lt.	02 pcs.
0002TR	- Transparent	500 ml.	12 pcs.
0003TR	- Transparent	1 Lt.	12 pcs.
0004TR	- Transparent	5 Lt.	02 pcs.

Finishing lacquer ZAPON LACK

It is a finishing glossy lacquer, solvent based and with good resistance, for golden surfaces. Formulated in respect of traditions, single pack, it is ready for use and easy to apply. It provides to the surface a pleasant aesthetic look.



Recommendations for application:

It can be applied by spray or by brush. It protects the surfaces that have been decorated with imitation gold, silver or bronze leaf.

Code	Cap.	Pack.
CDO6950	500 ml.	12 pcs.
CDO6951	1 Lt.	12 pcs.
CDO6952	5 Lt.	02 pcs.
CDO6953	25 Lt.	

Decorative gold and copper lacquers for interiors SHINE-DECOR GOLD LACK/SHINE-DECOR COPPER LACK

Metallic lacquers with special extra-bright effect, suitable for decorative purposes and are addressed both to private and to professional users making manual brush applications. Ideal for the decoration of valuable objects, frames, furniture and in general for wood, gypsum, metal and plaster that are not subjected to abrasion. Overcoating is not recommended not to compromise the final effect, though a light fixing is possible. Gold is available in the following shades: rich, pale, rich pale, ducat, gold chrome, silver chrome. Shine Décor Copper Lack is in copper colour.



Recommendations for application:

Apply by brush for the artistic decoration of small details. The highest aesthetic result is achieved on non- absorbent surfaces: in case of raw wood or gypsum a preliminary insulator (e.g. CDO6100 Intermediate insulator for Gilding) is recommended.

Code	Cap.	Pack.
CDO6960XX	125 MI.	06 pcs.
CDO6961XX	375 MI.	06 pcs.
CDO6962XX	750 MI.	06 pcs.
CDO6963XX	2,5 Lt.	02 pcs.
CDO6964XX	5 Lt.	02 pcs.
CDO6964.20XX	20 Lt.	



Finishing lacquer for interiors, gold, copper and silver
GOLD LACK PRO / COPPER LACK PRO / SILVER LACK

Metal lacquers for spray application, with good brightness and resistance. Thanks to their specific formulation, they can be overlacquered and therefore can be considered as proper finishing for interiors, for various purposes and backgrounds: wood, metal, gypsum, plaster and so on. They are addressed to professional users and can be used also by brush. Gold is available in the following shades: rich, pale, rich pale, ducat. Copper Lack Pro is in copper colour. Silver Lack is in silver colour and is suitable also for exteriors.



Recommendations for application:

Apply by brush for the artistic decoration of small details or by spray to cover large areas. The highest aesthetic result is achieved on non-absorbent surfaces: in case of raw wood or gypsum a preliminary insulator (e.g. CDO6100 Intermediate insulator for Gilding) is recommended.

Gold Lack E Copper Lack Pro		
Code	Cap.	Pack.
CDO6980XX	125 MI.	06 pcs.
CDO6981XX	375 MI.	06 pcs.
CDO6982XX	750 MI.	06 pcs.
CD06983XX	2,5 Lt.	02 pcs.
CD06984XX	5 Lt.	02 pcs.
CD06984.20XX	20 Lt.	

Silver Lack		
Code	Cap.	Pack.
CDO6960AR	125 MI.	06 pcs.
CDO6961AR	375 MI.	06 pcs.
CDO6962AR	750 MI.	06 pcs.
CD06963AR	2,5 Lt.	02 pcs.
CD06964AR	5 Lt.	02 pcs.
CD06964.20AR	20 Lt.	

Waterborne lacquers for interiors, gold, copper and silver
NATURAQUA GOLD LACK/NATURAQUA COPPER LACK/NATURAQUA SILVERLACK

Metallic, waterborne lacquers, odourless and ecologic, with good brightness and resistance, suitable for the decoration of interior surfaces. Comfortable and easy to use. Gold is available in the following shades: rich, pale, rich pale, ducat. Naturaqua Copper Lack is in copper colour. Naturaqua Silver Lack is in silver colour and is suitable also for exteriors.



Recommendations for application:

Apply by brush for the artistic decoration of small details or by spray to cover large areas. The highest aesthetic result is achieved on non-absorbent surfaces: in case of raw wood or gypsum a preliminary insulator (e.g. NAT4090 Naturaqua Wood Sealer) is recommended.

+5°C
 +30°C

Nat.gold Lack / Nat. Copper Lack		
Code	Cap.	Pack.
NATCDO6960XX	125 MI.	06 pcs.
NATCDO6961XX	375 MI.	06 pcs.
NATCDO6962XX	750 MI.	06 pcs.
NATCDO6963XX	2,5 Lt.	02 pcs.
NATCDO6964XX	5 Lt.	02 pcs.
NATCDO6964.20XX	20 Lt.	

Nat.silver Lack		
Code	Cap.	Pack.
NATCDO6960AR	125 MI.	06 pcs.
NATCDO6961AR	375 MI.	06 pcs.
NATCDO6962AR	750 MI.	06 pcs.
NATCDO6963AR	2,5 Lt.	02 pcs.
NATCDO6964AR	5 Lt.	02 pcs.
NATCDO6964.20AR	20 Lt.	



TECHNICAL ACCESSORIES

STEEL WOOL

Steel wool with different degrees of thickness of the wires, for various applications (paint removing, smoothing, cleaning, polishing,...).



Code	Cap.	Pack.
CD06470	Steel wool "0"	05 kg.
CD06469	Steel wool "00"	05 kg.
CD06467	Steel wool "000"	05 kg.

Code	Cap.	Pack.
CD06471-F	Steel wool "0000"	05 kg.
CD06471-F.200	Steel wool "0000"	200 gr.
CD06472	National steel wool	2,5 kg.

TOUCH UP SPATULA

Spatula in polymeric material for the application and the removal of products in paste form. Effective and precise, it does not damage the surface. Touch up spatula – special for the correct application of touch up wax fillers - small.



Code	Modelli
6447	TOUCH UP SPATULA - The correct tool for the perfect application of any wax touch up filler.
6447P	TOUCH UP SPATULA - The correct tool for the perfect application of any wax touch up filler.

CAN OPENING SPATULA

Metal spatula to easily open cans and mix liquid products or pastes. The spatula is 28 cm long. The polymer handle ensures a correct grip, while the steel structure makes the spatula resistant to chemical agents and mechanical stress. Ideal for mixing products contained in medium-small packaging.



Code
6448

SOLVOIL 06

Thinner for the dilution of oil-based products like Hard Furniture Oil. It can be used also to soften Borma traditional waxes, like Antikwax, and for the cleaning of brushes. Slow drying.



Code	Cap.	Pack.
4930.06	1 Lt	12 pcs.
4931.06	5 Lt	02 pcs.
4932.06	25 Lt	

Ward
as
r
m
a
s



BORMA WACHS®

Borma Range:

- Restoration
- Touch Up and Fillers
- Interior
- Exterior
- Gilding
- Decoration

Discover our products:



B.P.S. s.r.l.

Via E. Fermi, 17
30020 Torre di Mosto
Venezia Italy
Tel. +39 0421 951900
Fax +39 0421 951902

www.bormawachs.com

WAXES
FOR
RESTORATION
AND
DECORATION