

# INSTRUCTION MANUAL

## HD12 Dust Collector (240V) 680 cfm - LPHV System



W886

## Made in China

### Dear customer,

we wish you a pleasant and successful working experience with your new scheppach machine.

### Advice:

According to the applicable product liability law the manufacturer of this device is not liable for damages which arise on or in connection with this device in case of:

- improper handling,
- non-compliance with the instructions for use,
- repairs by third party, non authorized skilled workers,
- installation and replacement of non-original spare parts,
- improper use,
- failures of the electrical system due to the non-compliance with the electrical specifications and the VDE 0100, DIN 57113 / VDE 0113 regulations

### We recommend

that you read through the entire operating instructions before putting into operation.

These operating instructions are to assist you in getting to know your machine and utilize its proper applications.

The operating instructions contain important notes on how you work with the machine safely, expertly, and economically, and how you can avoid hazards, save repair costs, reduce downtime and increase the reliability and service life of the machine.

In addition to the safety requirements contained in these operating instructions, you must be careful to observe your country's applicable regulations.

The operating instructions must always be near the machine. Put them in a plastic folder to protect them from dirt and humidity. They must be read by every operator before beginning work and observed conscientiously. Only persons who have been trained in the use of the machine and have been informed of the various dangers may work with the machine. The required minimum age must be observed.

In addition to the safety requirements contained in these operating instructions and your country's applicable regulations, you should observe the generally recognized technical rules concerning the operation of woodworking machines.

### General notes

- After unpacking, check all parts for any transport damage. Inform the supplier immediately of any faults.
- Later complaints cannot be considered.
- Make sure the delivery is complete.
- Before putting into operation, familiarize yourself with the machine by carefully reading these instructions.
- Use only original scheppach accessories, wearing or

- When ordering, include our item number and the type and year of construction of the machine.

**In these operating instructions we have marked the places that have to do with your safety with this sign: ⚠**

## ⚠ Safety notes

- Please pass on safety notes and instructions to all those who work on the machine.
- Observe all safety instructions and warnings attached to the machine.
- See to it that safety instructions and warnings attached to the machine are always complete and perfectly legible.
- Check all power supply lines. Do not use defective lines.
- Insure that the planing machine is set up in a stable position on firm ground.
- Protect the machine from moisture and dampness.
- Keep children away from the machine when it is connected to the power supply.
- Operating personal must be at least 18 years of age. Trainees must be at least 16 years of age, but may only operate the machine under adult supervision.
- Connection and repair work on the electrical installation may be carried out by a qualified electrician only.
- Note the motor rotation direction – see electrical connection.
- Switch the machine off and pull power supply plug when rectifying any malfunctions.
- Persons unfamiliar with the machine may not operate it.
- Perform maintenance tasks, change bag, filter, or hose only with mains plug unplugged.
- In hazardous locations, only special explosion-proof devices may be operated. Use only original accessories.
- Verify proper functioning of the machine before each use.
- Do not use the machine at temperatures below 0 °C, at risk of damaging the housing.
- When leaving the work place, switch the motor off. Pull the power supply plug.
- Cut off the external power supply of the machine or plant even if only minor changes of place are envisaged. Properly reconnect the machine to the supply mains before commissioning.

## ⚠ Use only as authorized

**The machine meets valid EC machine guidelines.**

- The machine has been built in accordance with state-of-the-art standards and the recognized safety rules.

Nevertheless, its use may constitute a risk to life and limb of the user or of third parties, or cause damage to the machine and to other material property.

- The machine must only be used in technically perfect condition in accordance with its designated use and the instructions set out in the operating manual, and only by safety-conscious persons who are fully aware of the risks involved in operating the machine. Any functional disorders, especially those affecting the safety of the machine, should therefore be rectified immediately. The vacuum exhaust unit is designed only for removing saw dust (nor for normal dust).
- Regularly inspect the filter for damage.
- Replace damaged filters!
- Regularly check that the housing is well sealed and regularly inspect the filter and saw dust sack seals.
- Do not allow foreign objects such as screws, nails, plastic or wood chips to enter the cleaning nozzle.
- The machine must only be used with original parts and original accessories supplied by the manufacturer.
- The Exhaust System HD12 is constructed exclusively for exhaust-vacuuming wood chips and saw dust and may only be used in connection with wood processing machines.
- When vacuuming shop floors, wood or metal pieces may not be vacuumed.
- Any other use exceeds authorization. The manufacturer is not responsible for any damages resulting from unauthorized use; risk is the sole responsibility of the operator.
- The safety, work and maintenance instructions of the manufacturer as well as the technical data given in the calibrations and dimensions must be adhered to.
- Relevant accident prevention regulations and other, generally recognized safety-technical rules must also be adhered to.
- The machine may only be used, maintained, and operated by persons familiar with and instructed in its operating and procedures. Arbitrary alterations to the machine release the manufacturer from all responsibility for any resulting damages.
- The machine may only be used with original accessories made by the manufacturer.

### Remaining hazards

The machine has been built using modern technology in accordance with recognized safety rules. Some remaining hazards, however, may still exist.

- Wood chips and sawdust can be health hazards. Be sure to wear personal protective gear such as safety goggles and a dust mask.
- Dust inhalation may occur when closing and replacing the dust bag.

Please note the instructions concerning proper disposal in the operating manual (e.g. the use of P2 dust masks)

to prevent dust inhalation.

- Noise can be a health hazard. The permitted noise level is exceeded when working. Be sure to wear personal protective gear such as ear protection.
- The use of incorrect or damaged mains cables can lead to injuries caused by electricity.
- Even when all safety measures are taken, some remaining hazards which are not yet evident may still be present.
- Remaining hazards can be minimized by following the instructions in "Safety Precautions", "Proper Use" and in the entire operating manual.

### Technical data

Technical Data	
Dimensions L x W x H (mm):	775 x 450 x 1150
Overall height with filter bag mm	1550
Extractor duct connections $\varnothing$ mm	100
Hose length mm	2000
Wheel diameter mm	100
Approx. weight kg	25,0
Rate of air flow m <sup>3</sup> /h	1150
Pressure differential Pa	1000
Filter area (filter bag) m <sup>2</sup>	1,00
Sawdust bag capacity litres	75
Performance	V/50
Electric motor	240 V
Nominal input P1	0,55 kW
Output power P2	0,34 kW
Motorspeed 1/min.	2850
Work Place Emissions Values:	
Empty Run Noise dB (A)	75
Working Noise dB (A)	75



### Scope of Supply Fig.1

- 1 Housing complete with motor
- 2 Undercarriage with wheels
- 3 Side covering, left
- 4 Side covering, right
- 5 Base plate
- 6 Cross-member
- 7 Filter bag
- 8 Upper clamp
- 9 Support bar
- 10 Shavings bag
- 11 Lower clamp
- 12 Exhaust hose
- 13 Clamp 2x
- 14 Hose coupling
- 15 Accessory kit
- 16 Operating instructions

### Assembly

For packaging reasons your machine is delivered in semi-assembled state.

- Attach the undercarriage and the base plate with philips head screws M5 x 6 mm.
- Attach the side covering loosely to the base frame using flat-head screws M8 x 40 mm and screw nuts. Do not tighten completely.
- Attach the cross-member to the side covering left and right with flat-head screws M 8 x 12 and screw nuts.
- Please remove the 4 nuts off the screws already in the housing(2 each side). The third nut stays on to hold the strengthening plates on. Fit the housing to stand and refit nuts and tighten. □
- Slide in the filter bag over the case and attach it with a clamp. Position the support bar into the housing and hang the filter bag from it.
- Attach the shavings bag to the lower air ventilator using the clamp.
- Attach the exhaust hose to the nozzle on the housing and affix it with a hose clamp.
- Attach the hose coupling to the other end of the hose using a hose clamp.

The exhaust system should be cleaned every time the shavings bag is changed.

Damaged filters and bags must be immediately changed in order to keep the amount of dust that escapes into the work environment as low as possible.

#### Initial operation

Note safety instructions before operation. The data on the motor type plate (voltage and frequency) must conform to the mains supply voltage and frequency. After connection to the mains, the Dust Extractor HD12 is ready for operation.

## ⚠ Electrical connection

Connection and repair work on the electrical equipment must be carried out by a qualified technician only.

The installed electric motor is factory connected ready for operation.

The connection made by the customer as well as any extension cables used must comply with all relevant regulations.

### Important note

Defective electrical connection cables

Electrical connection cables often suffer isolation damage.

Possible causes are:

- Pinch points when connection cables are run through window or door gaps.
- Kinks resulting from incorrect attachment or laying of the connection cable.
- Cuts resulting from running over the connection cable.
- Isolation damage resulting from forcefully pulling out of the wall socket.

**Such defective electrical connection cables must not be used as the isolation damage makes them extremely hazardous.**

Check electrical connection cables regularly for damage. Make sure the cable is disconnected from the mains when checking.

Electrical connection cables must comply with the regulations applicable in your country.

### One phase motor

- The mains voltage must comply with the specification on the motor name plate.
- Extension cables must have a cross section of at least 1.0 sqmm.
- The mains is protected by a 16 A slowblow fuse.

When making inquiries please specify the following:

- Motor manufacturer
- Motor current type
- Motor nameplate specifications
- Switch nameplate specifications

When sending the motor in, always send the complete drive unit including the switch.

## ⚠ Maintenance

For all maintenance and cleaning tasks, turn off motor and unplug mains.

- Connection and repair work on the electrical installation may be carried out by a qualified electrician only.
- For constant performance, periodically shake out filter bag vigorously. Between cleanings, beating the bag with the hand several times is sufficient.
- The sawdust bag must be replaced at the latest when the sawdust is within 10 cm. of the housing collar.

## EC Declaration of Conformity

We herewith declare, **Woodster GmbH, Günzburger Str. 69, D-89335 Ichenhausen** that the machine described below due to its construction and design and in the version delivered by us complies with the relevant provisions of the following EC Directives.

In case of a modification of the machine this declaration ceases to be valid.

Machine description:

**Dust extractor**

Machine model:

**HD12, Art.-Nr. 390 6301 915, 390 6301 948**

Relevant EC directives:

**EC machine directive 2006/42/EG,  
EC Low voltage directive 2006/95/EWG,  
EC-EMV directive 2004/108/EWG.**

Applied harmonized European Standards:

**EN 12100-1, EN 12100-2, EN 13857, EN 349, EN 13850, EN 1088, EN 60204-1,  
EN 55014, EN 60555-2, EN 50082-1, EN 60555-3, EN 61029-1, EN 61029-2-1,  
EN 60825-1**

Applied european Standards:

**EN 847-1, EN 13849-1**

Applied national technical standards and specifications, especially:

**ISO 7960**

Notified body within the meaning of Annex VII

**TÜV Rheinland**

Engaged for

**EC design examination (EC design certification no. AN 50039334 0001), GS  
examination no. BM 60008940 0001**

Date

**Ichenhausen, 02.07.2009**

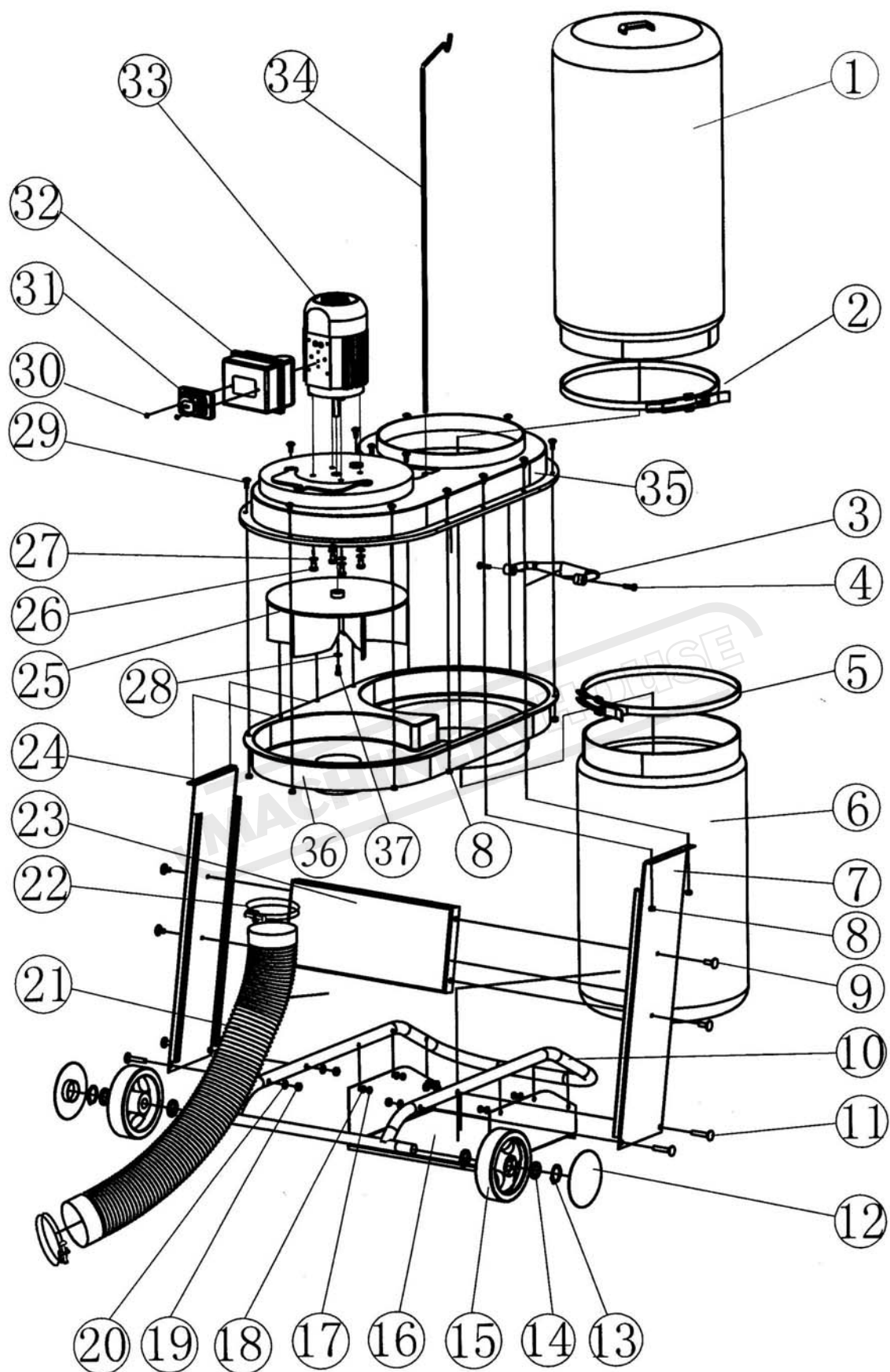
Signature:



on behalf of T. Honigmann (managing director)

MACHINERYHOUSE





**Parts list**

Item: Name:

- |                                 |   |
|---------------------------------|---|
| 1 Filtering bag                 | 20 Washer $\Phi 8$                          |
| 2 Upper Clamping band           | 21 Hose                                     |
| 3 Handgrip                      | 22 Clamping band                            |
| 4 Taping bolt ST5.5 $\times$ 30 | 23 Horizontal Plate                         |
| 5 Lower Clamping band           | 24 Right side panel                         |
| 6 Collecting bag                | 25 Turbo Fan                                |
| 7 Left side panel               | 26 Hexagon bolt M8 $\times$ 12              |
| 8 Nut M5                        | 27 Washer $\Phi 8$                          |
| 9 Square neck bolt M8x12        | 28 Washer $\phi 6$                          |
| 10 Base tube                    | 29 Cup square neck bolt M5 $\times$ 12      |
| 11 Square neck bolt M8x40       | 30 Pan head tapping screw ST4.8 $\times$ 15 |
| 12 Wheel cover                  | 31 Magnetic switch with emergency           |
| 13 Circlip                      | 32 Switch box                               |
| 14 Washer $\Phi 14$             | 33 Motor                                    |
| 15 Wheel                        | 34 Dust container holder                    |
| 16 Bottom plate                 | 35 Upper housing                            |
| 17 Screw M5x6                   | 36 Lower housing                            |
| 18 Washer $\Phi 5$              | 37 Screw M6x16                              |
| 19 Nut M8                       |   |

MACHINERYHOUSE