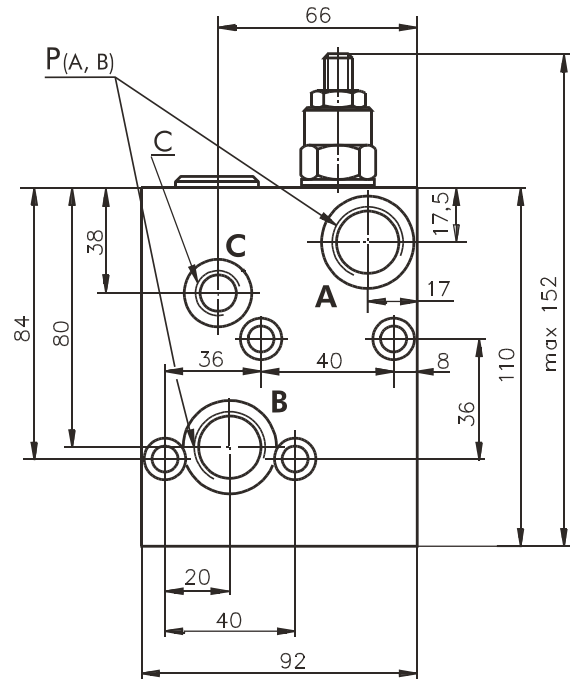
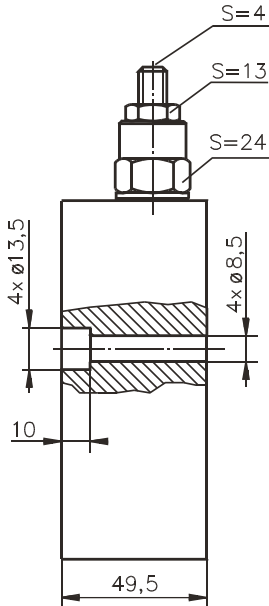


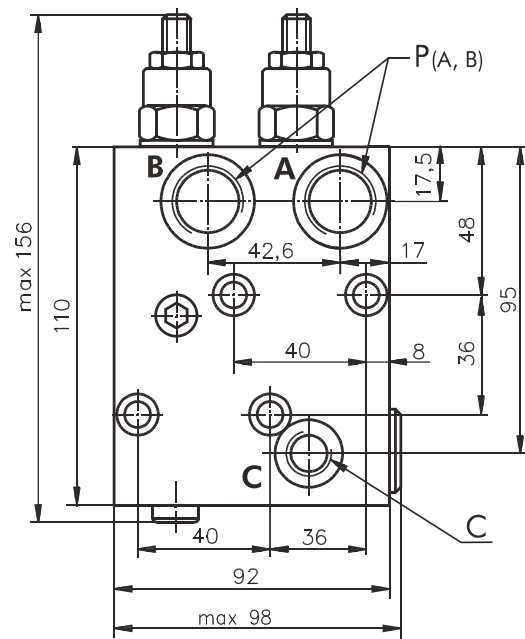
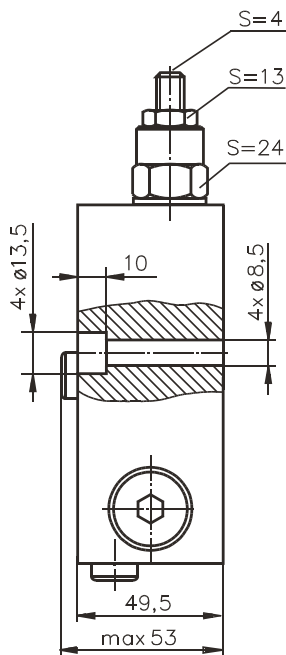
VALVES FOR MP, MR HYDRAULIC MOTORS

SINGLE VALVE KPBR-250/1/E...



P(A, B) : G1/2 (M22x1,5), 17 mm depth
C : G1/4 (M14x1,5), 14 mm depth

DUAL VALVE KPBR-250/1/D...

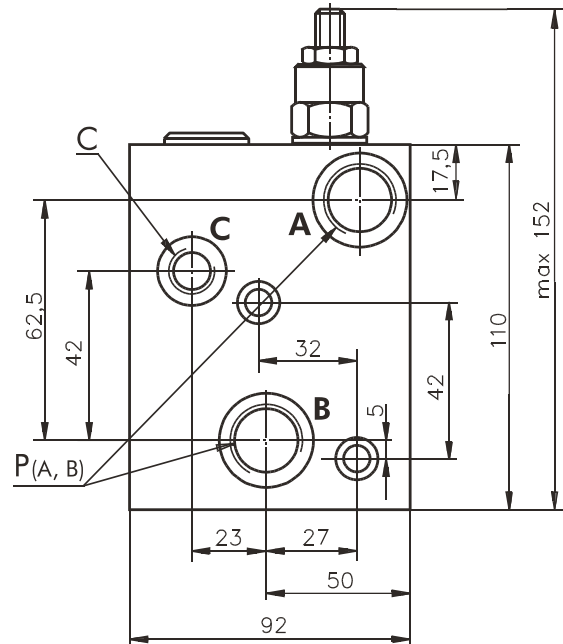
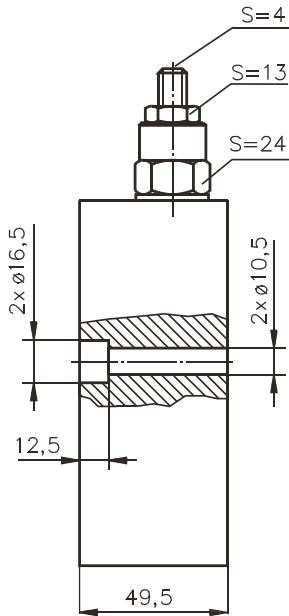


P(A, B) : G1/2 (M22x1,5), 17 mm depth
C : G1/4 (M14x1,5), 14 mm depth

Note : KPBR Blocks are installed directly on MP and MR Motors with four bolts M8x50 - 8.8 DIN 912.
 Tightening torque $2^{+0.5}$ daNm.

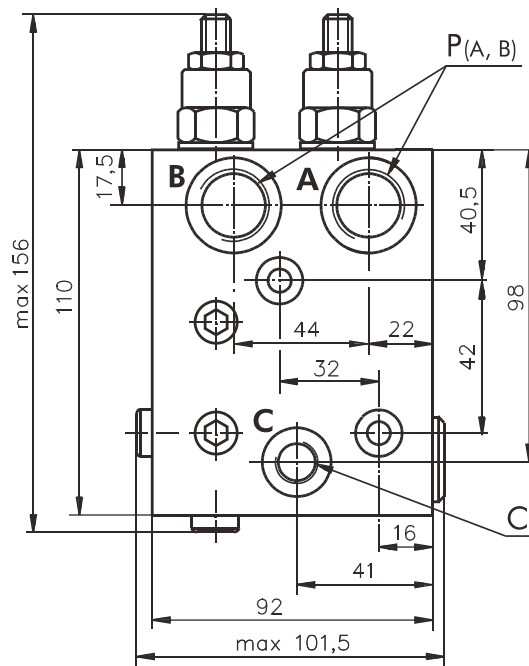
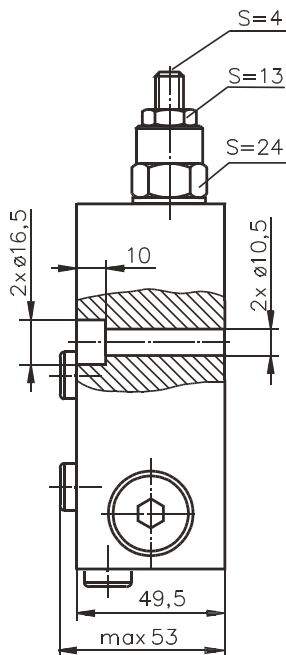
VALVES FOR MS HYDRAULIC MOTORS

SINGLE VALVE KPBS-250/1/E...



$P_{(A,B)}$: G1/2 (M22x1,5), 17 mm depth
C : G1/4 (M14x1,5), 14 mm depth

DUAL VALVE KPBS-250/1/D...

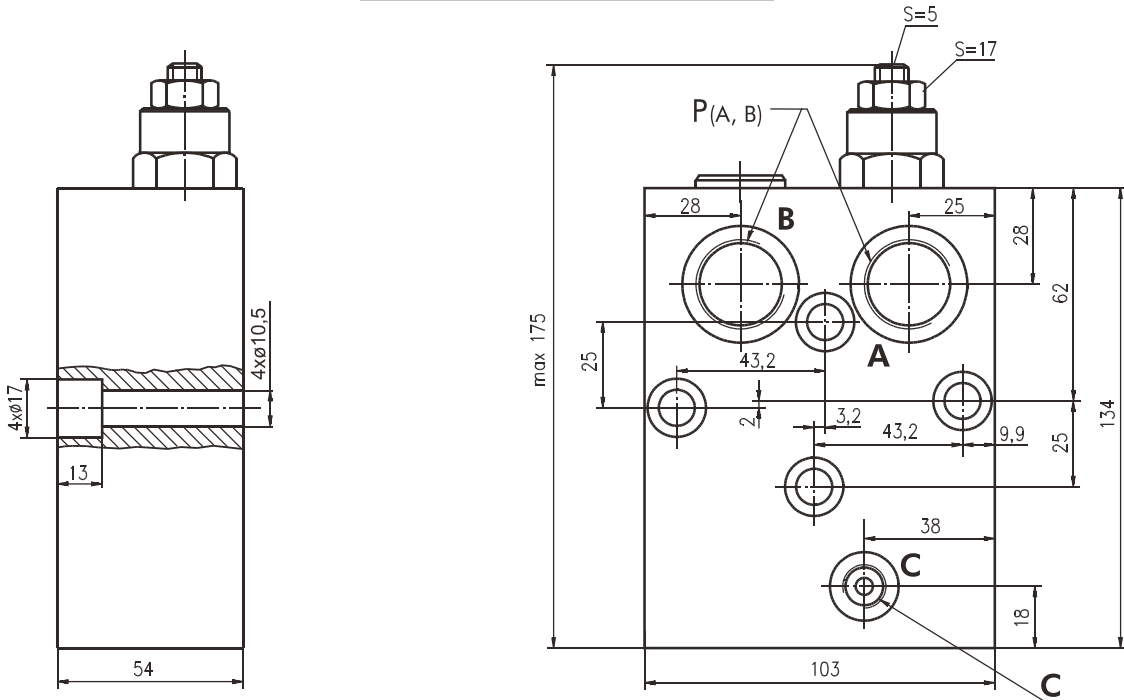


$P_{(A,B)}$: G1/2 (M22x1,5), 17 mm depth
C : G1/4 (M14x1,5), 14 mm depth

Note : KPBS Blocks are installed directly on MS Motors with two bolts M10x50 - 8.8 DIN 912.
 Tightening torque $4,5^{+0,5}$ daNm.

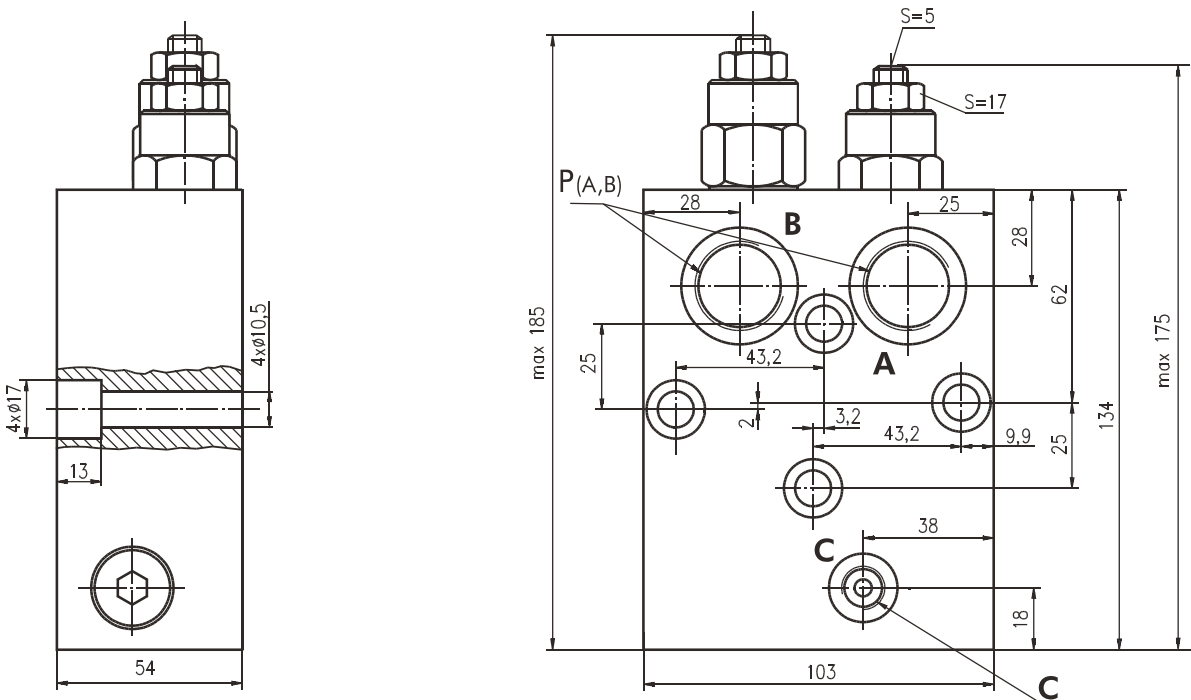
VALVES FOR MT HYDRAULIC MOTORS

SINGLE VALVE KPBT-250/1/E...



P_(A, B) : G3/4 (M27x2), 17 mm depth
C : G1/4 (M14x1,5), 14 mm depth

DUAL VALVE KPBT-250/1/D...

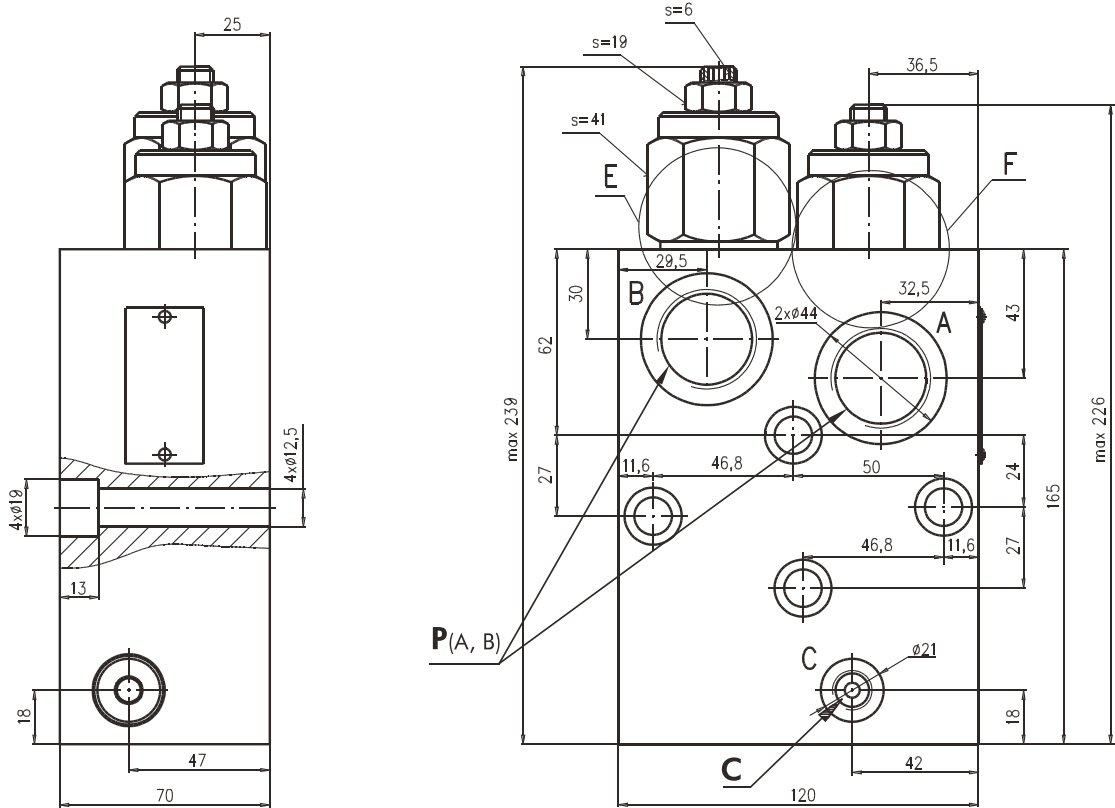


P_(A, B) : G3/4 (M27x2), 17 mm depth
C : G1/4 (M14x1,5), 14 mm depth

Note :KPB Blocks are installed directly on MT Motors with four bolts M10x55 - 8.8 DIN 912.
 Tightening torque $4,5^{+0.5}$ daNm.

VALVES FOR MV HYDRAULIC MOTORS

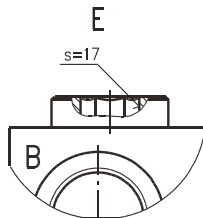
DUAL VALVE KPBV-250/1/D...



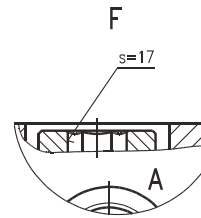
P_(A, B) : G1-A (M33x2), 20 mm depth

C : G1/4 (M14x1,5), 14 mm depth

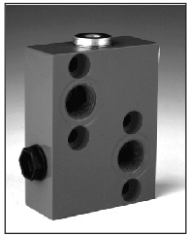
SINGLE VALVE KPBV-250/1/EA...



SINGLE VALVE KPBV-250/1/EB...



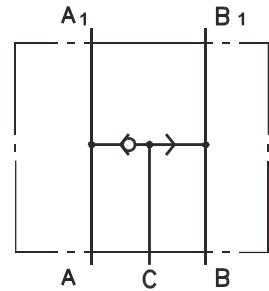
Note : KPBV Blocks are installed directly on MV Motors with four bolts M12x70 - 8.8 DIN 912.
Tightening torque $7,5^{+0.5}$ daNm.



SWITCH VALVE

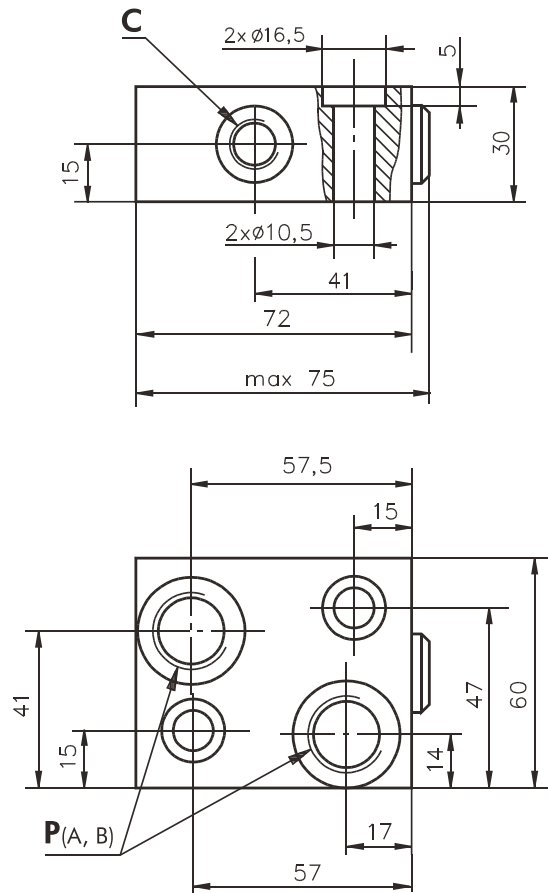
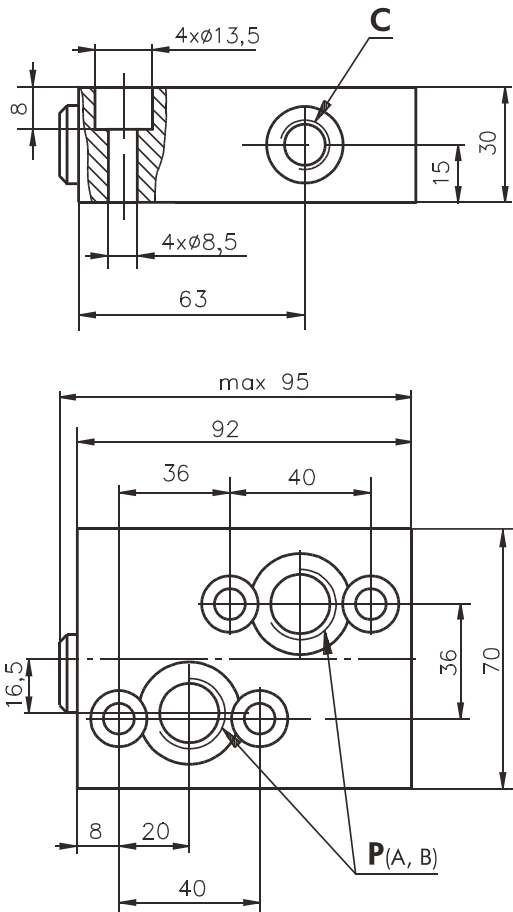
SPECIFICATION DATA

Parameters	Type	
	KPWR	KPWS
Flow Rate , l/min	60	
Rated Pressure , bar	250	
Weight , kg	0,850	0,670



**VALVE FOR MP, MR HYDRAULIC MOTORS
KPWR**

**VALVE FOR MS HYDRAULIC MOTORS
KPWS**



P_(A, B): G1/2 (M22x1,5), 17 mm depth
C : G1/4 (M14x1,5), 14 mm depth

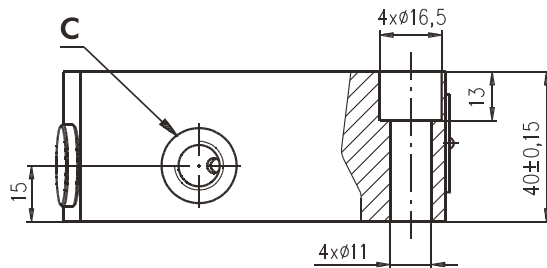
Note : KPWR Blocks are installed directly on MP and MR Motors with four bolts M8x40 - 8.8 DIN 912. Tightening torque $2^{+0,5}$ daNm.
 KPWS Blocks are installed directly on MS Motors with two bolts M10x40 - 8.8 DIN 912. Tightening torque $4,5^{+0,5}$ daNm.

SWITCH VALVE (continued)

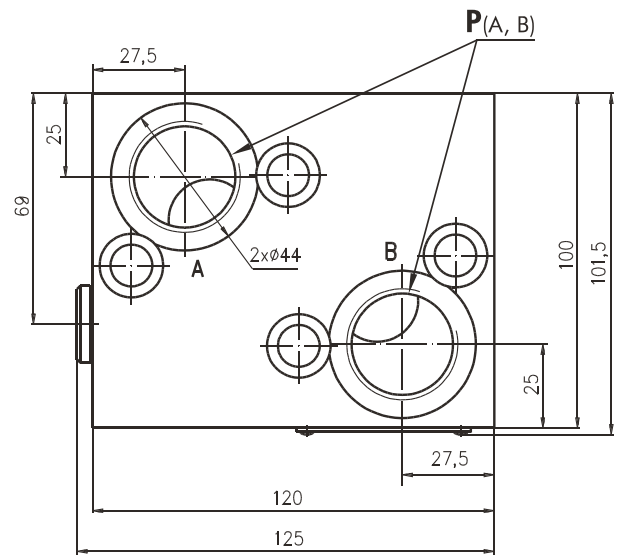
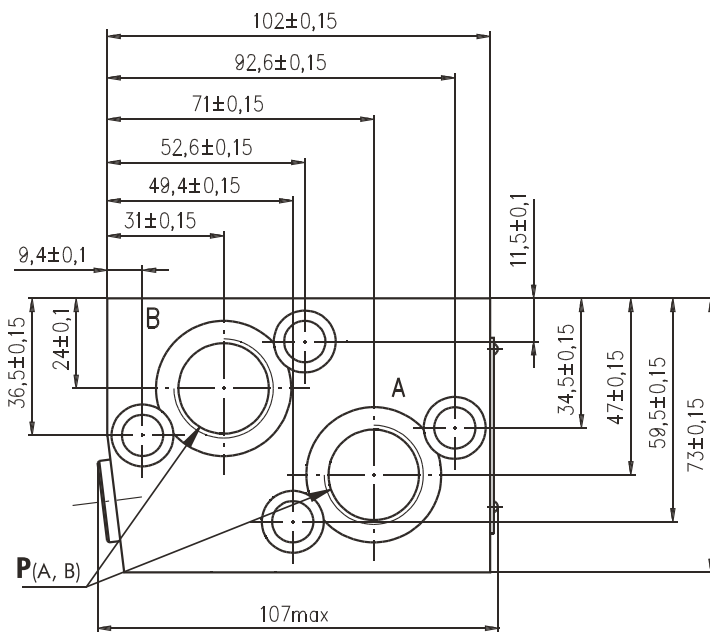
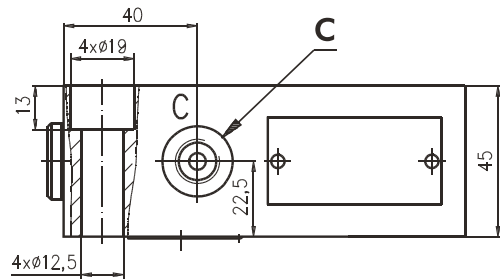
SPECIFICATION DATA

Parameters	Type	
	KPWT	KPWV
Flow Rate , l/min	100	200
Rated Pressure , bar	250	
Weight , kg	1,800	3,150

**VALVE FOR MT HYDRAULIC MOTORS
KPWT**



**VALVE FOR MV HYDRAULIC MOTORS
KPWV**

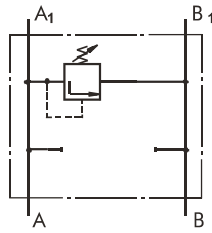


P_(A, B) : G3/4 (M27x2), 17 mm depth
C : G1/4 (M14x1,5), 14 mm depth

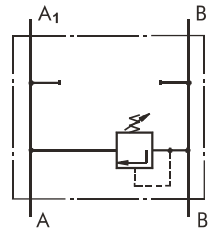
P_(A, B) : G1-A (M33x2), 20 mm depth
C : G1/4 (M14x1,5), 14 mm depth

Note : KPWT Blocks are installed directly on MT Motors with two bolts M10x50 - 8.8 DIN 912.
Tightening torque $4,5^{+0,5}$ daNm.
KPWV Blocks are installed directly on MV Motors with four bolts M12x45 - 8.8 DIN 912.
Tightening torque $7,5^{+0,5}$ daNm.

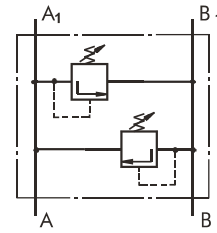
CROSSOVER RELIEF VALVES



Single Crossover Relief Valve
type KPEA ...



Single Crossover Relief Valve
type KPEB ...



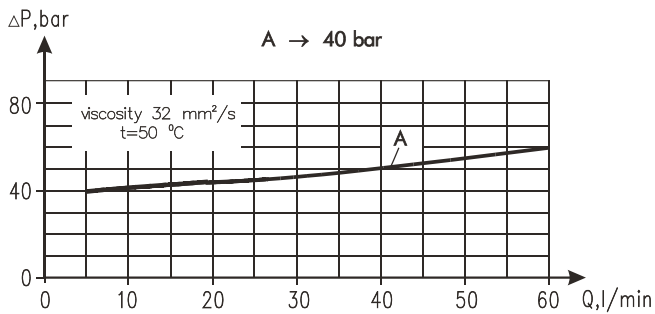
Dual Crossover Relief Valve
type KPD ...

SPECIFICATION DATA

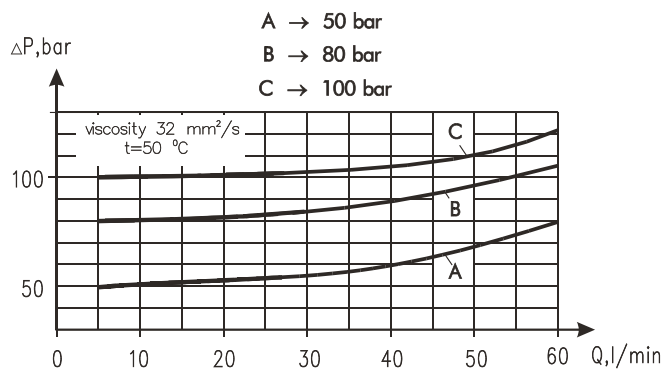
Parameters	Type						
	KPE...R(H)	KPDR(H)	KPE...S	KPE...SH	KPDS	KPDSH	
Flow Rate , l/min	60						
Rated Pressure*, bar	5 to 40; 30 to 100; 80 to 250						
Weight , kg	series 1	1,32	1,44	1,58	1,58	1,70	1,70
	series 2	0,74	0,85	0,84	0,67	0,96	0,78

*Pressure Settings are at flow rate of 5 l/min and viscosity 32 mm²/s (50 °C).

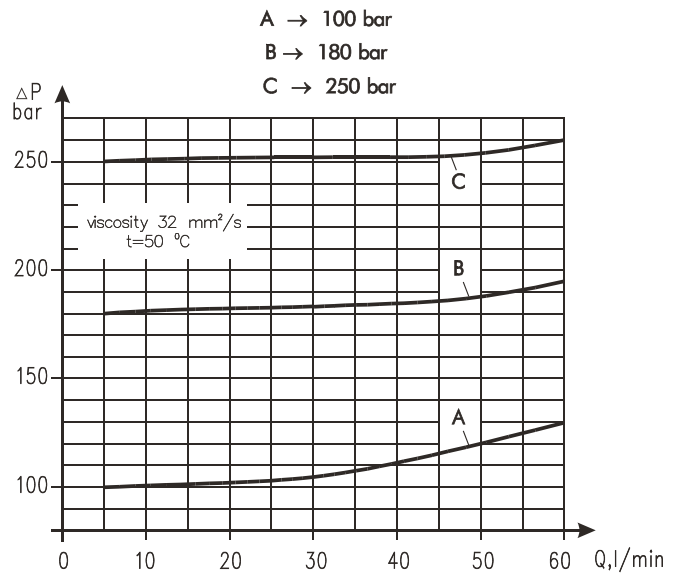
Rated Pressure 5 ÷ 40 bar



Rated Pressure 30 ÷ 100 bar

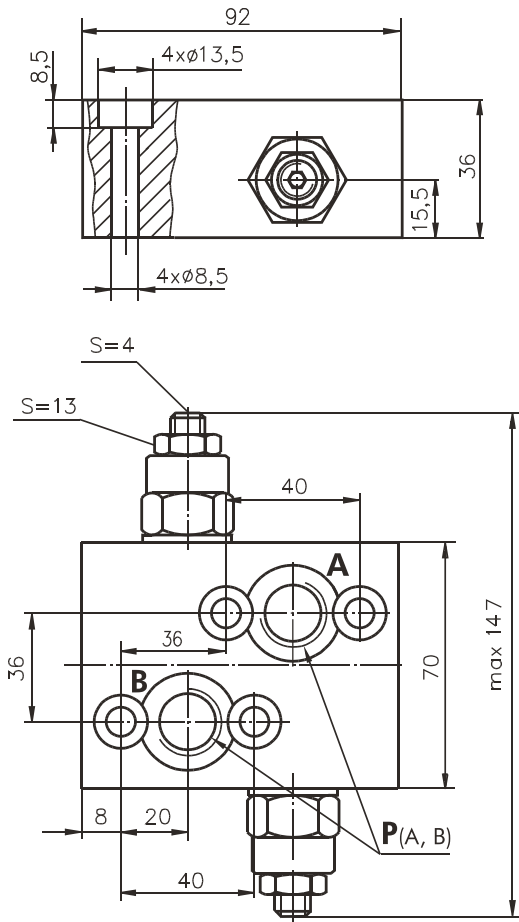


Rated Pressure 80 ÷ 250 bar

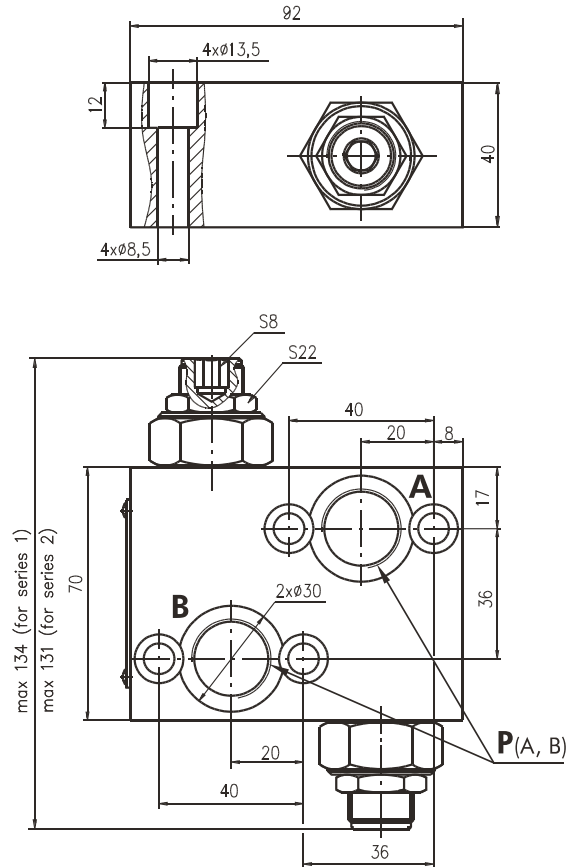


VALVES FOR MP, MR HYDRAULIC MOTORS

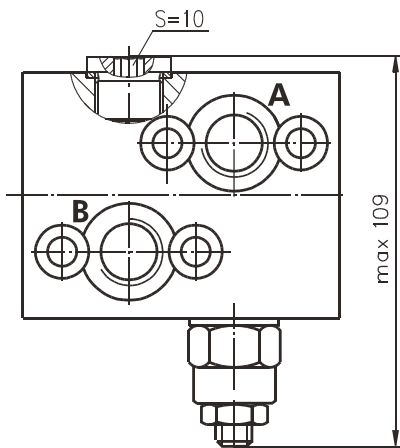
DUAL VALVE KPDR.../...



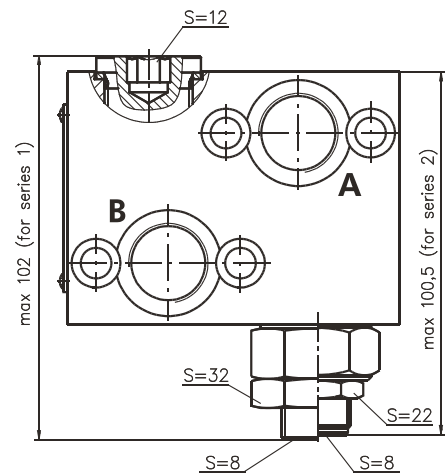
**DUAL VALVE KPDRH.../...
series1 and series 2**



SINGLE VALVES KPER.../...



SINGLE VALVES KPERH.../...



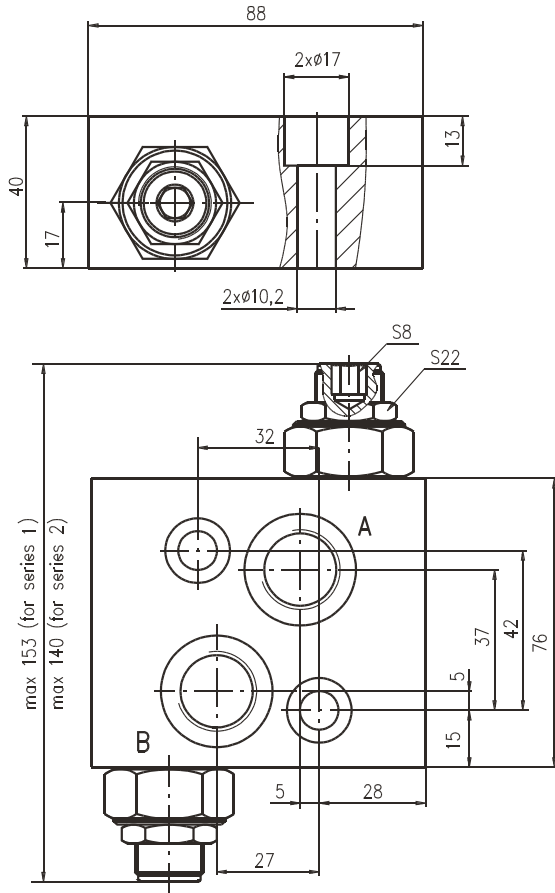
P_(A, B): G1/2 (M22x1,5), 15 mm depth

P_(A, B): G1/2 (M22x1,5), 17 mm depth

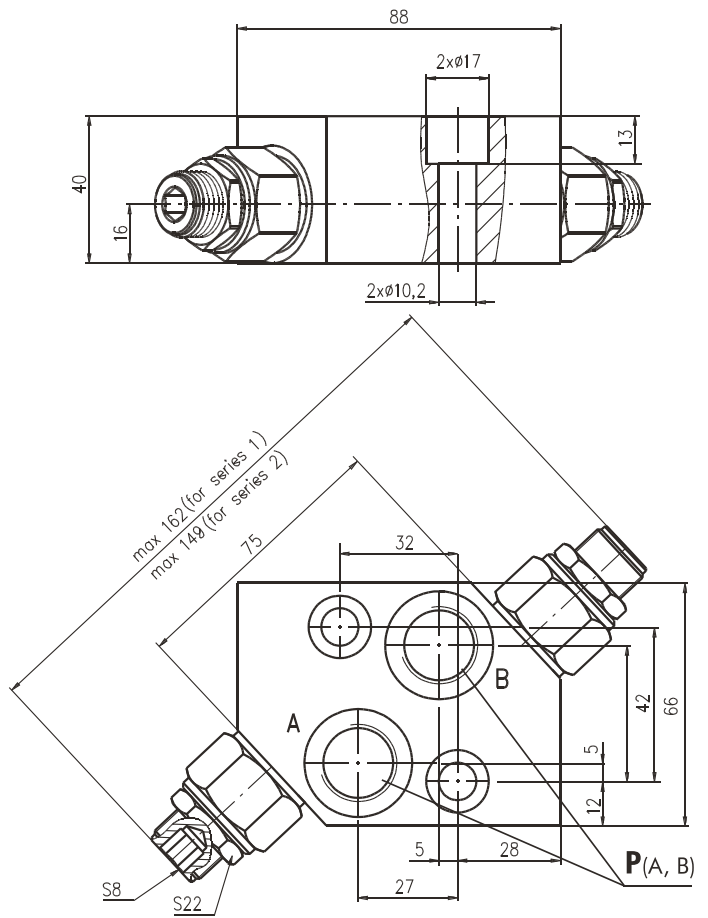
Note:-KPDR(H) (KPER(H)) Blocks are installed directly on MP and MR Motors with four bolts M8x40-8.8 DIN 912. Tightening torque 2^{+0.5} daNm.

VALVES FOR MS HYDRAULIC MOTORS

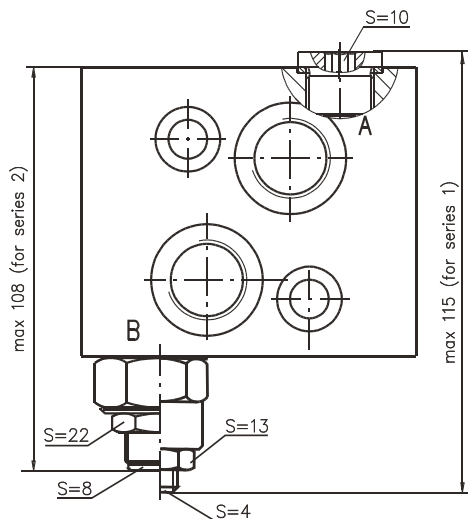
**DUAL VALVE KPDS .../...
series1 and series 2**



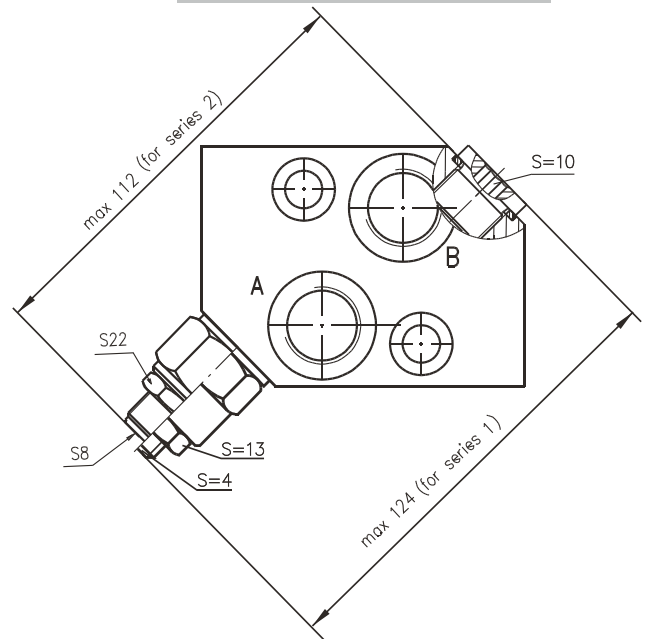
**DUAL VALVE KPDSH .../...
series1 and series 2**



SINGLE VALVES KPES.../...



SINGLE VALVES KPESH.../...



$P_{(A,B)}$: G1/2 (M22x1,5), 15 mm depth

$P_{(A,B)}$: G1/2 (M22x1,5), 17 mm depth

Note: -KPDS(H) (KPES(H)) Blocks are installed directly on MS Motors with two bolts M10x40-8.8 DIN 912.
Tightening torque $4,5^{+0,5}$ daNm.

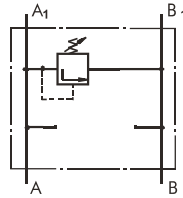
VALVE FOR MT HYDRAULIC MOTORS

SPECIFICATION DATA

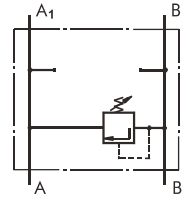


Parameters	Type	
	KPET	KPDT
Flow Rate , l/min	120	
Rated Pressure*, bar	80 to 210	
Weight , kg	5,10	5,54

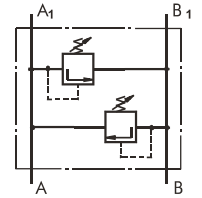
*Pressure Settings are at flow rate of 5 l/min and viscosity 32 mm²/s (50 °C).



Single Crossover Relief Valve type KPEAT ...

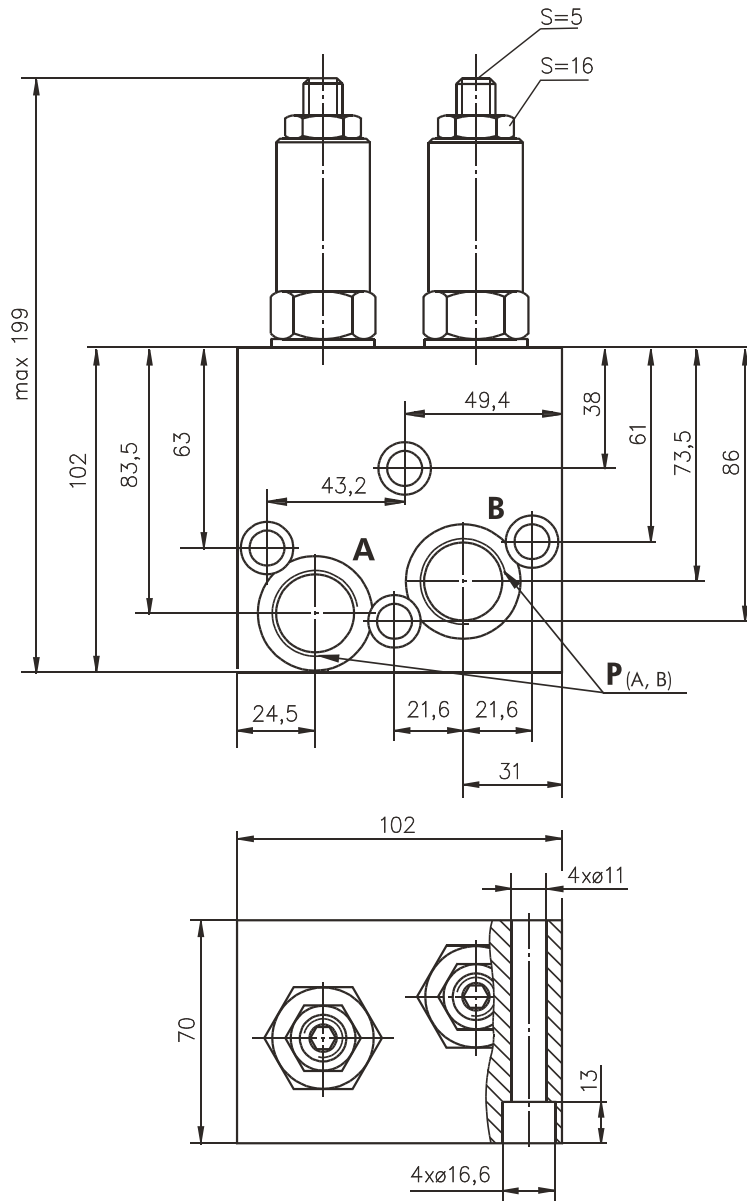


Single Crossover Relief Valve type KPEBT ...

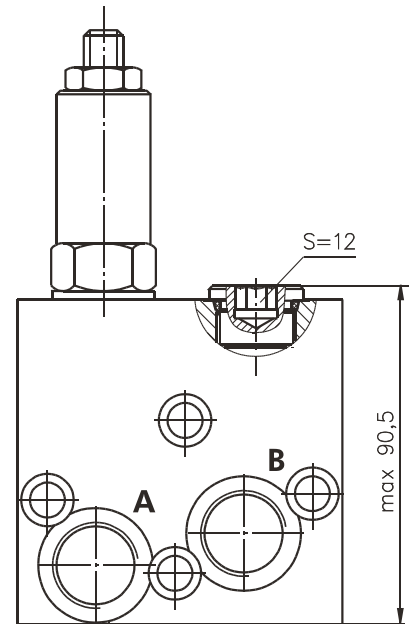


Dual Crossover Relief Valve type KPDT ...

DUAL VALVE KPDT .../...



SINGLE VALVE KPET.../...



P (A, B): G3/4 (M27x2), 20 mm depth

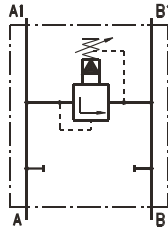
Note : KPDT (KPET) Blocks are installed directly on MT Motors with four bolts M10x70 - 8.8 DIN 912. Tightening torque 4,5^{+0.5} daNm.

VALVE FOR MV HYDRAULIC MOTORS

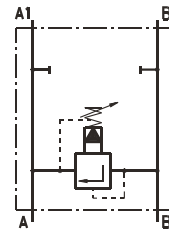
SPECIFICATION DATA

Parameters	Type		
	KPEAV	KPEBV	KPDV
Flow Rate , l/min	200		
Rated Pressure*, bar	10 to 100; 20 to 250		
Weight , kg	4,9	7,1	8,00

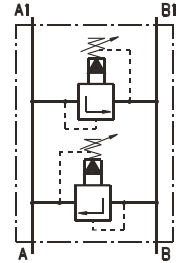
*Pressure Settings are at flow rate of 5 l/min and viscosity 32 mm²/s (50 °C).



Single Crossover Relief Valve type KPEAV ...

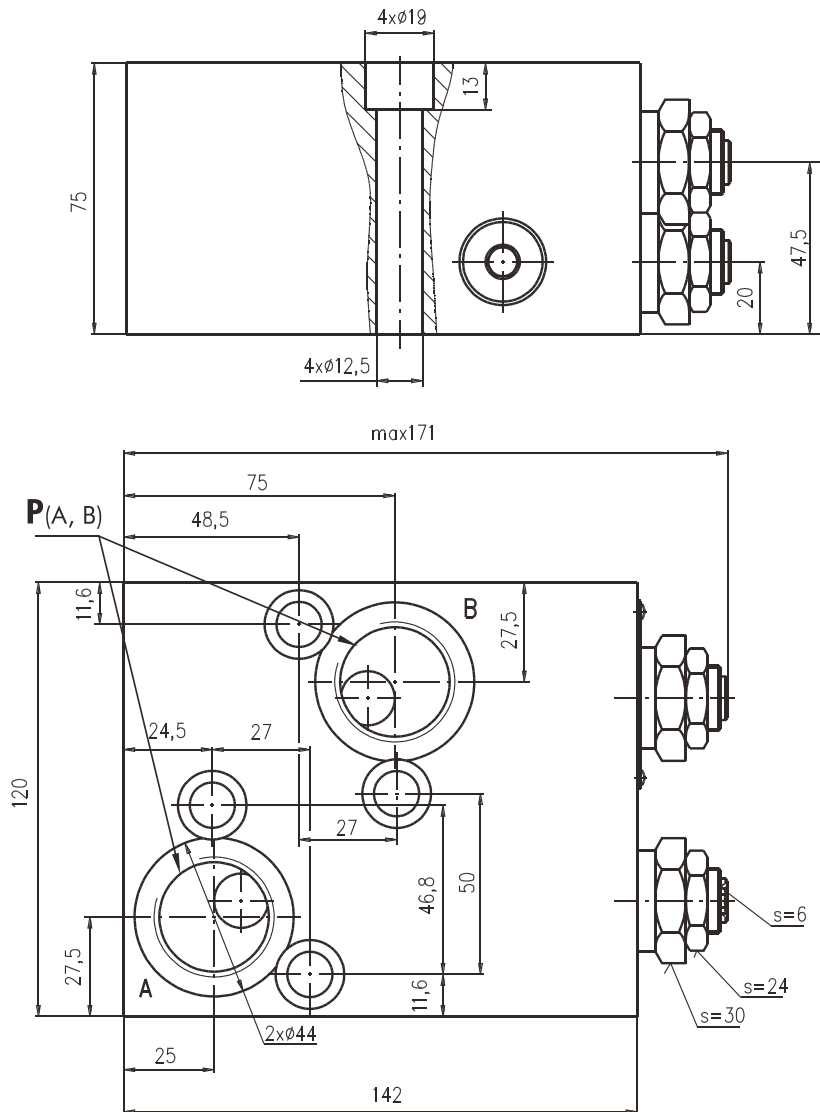


Single Crossover Relief Valve type KPEBV ...



Dual Crossover Relief Valve type KPDV ...

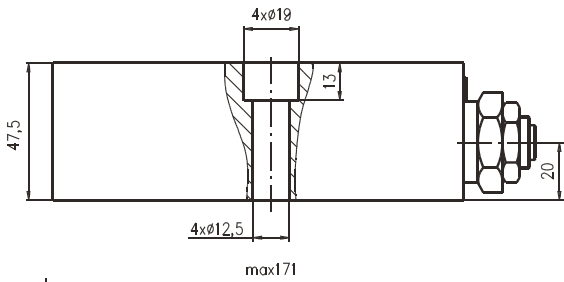
DUAL VALVE KPDV .../...



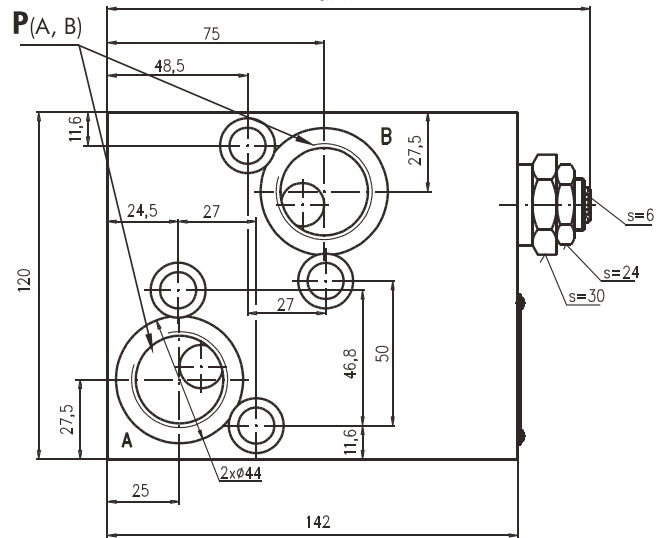
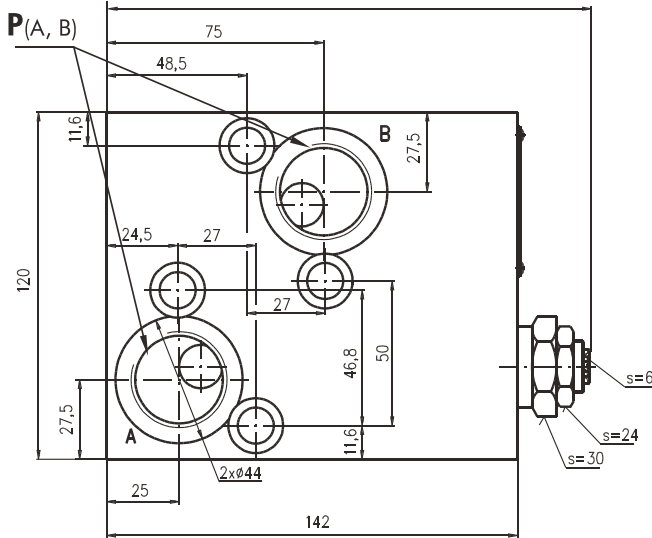
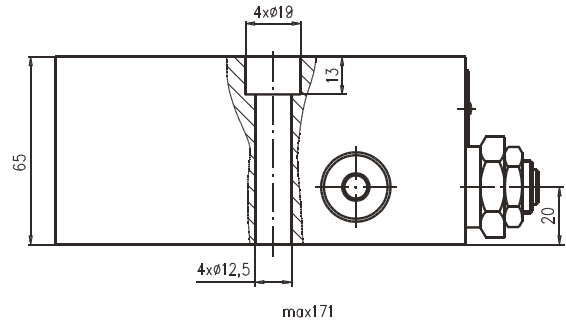
P_(A, B) : G1-A (M33x2), 20 mm depth

Note :KPDV Blocks are installed directly on MV Motors with four bolts M12x75 - 8.8 DIN 912. Tightening torque 7,5^{+0.5} daNm.

SINGLE VALVE KPEAV .../...



SINGLE VALVE KPEBV .../...



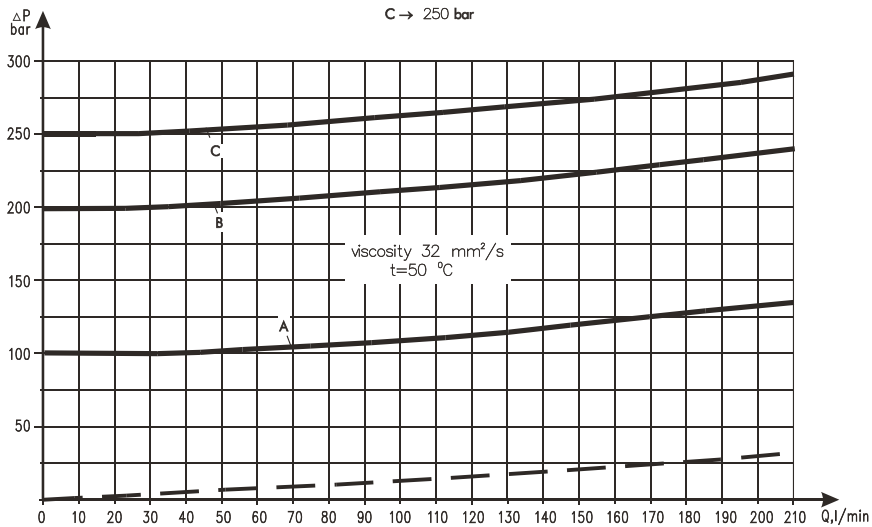
$P_{(A, B)}$: G1-A (M33x2), 20 mm depth

$P_{(A, B)}$: G1-A (M33x2), 20 mm depth

Note :KPEAV Blocks are installed directly on MV Motors with four bolts M12x50 - 8.8 DIN 912.
KPEBV Blocks are installed directly on MV Motors with four bolts M12x65 - 8.8 DIN 912.
Tightening torque $7,5^{+0.5}$ daNm.

Rated Pressure

- A → 100 bar
- B → 200 bar
- C → 250 bar



ORDER CODE - OVERCENTER VALVES WITH BRAKE CONTROL

	1	2	3	4	5	6	7
K P B		-	/	/			

Pos.1 - Housing Type

- R** - Valve block for MP and MR Motors
- S** - Valve block for MS Motors
- T** - Valve block for MT Motors
- V** - Valve block for MV Motors

Pos.2 - Rated Pressure, bar

- 250** - 70÷250, Std Setting 250 bar@5 lpm

Pos.3 - Pilot Ratio

- 1** -4,25 : 1

Pos.4 - Number of Valves

- D** - Two Valves - Dual
- EA** - One Valve on line A - Single
- EB** - One Valve on line B - Single

Pos.5 - Ports

- omit - BSPP (ISO 228)
- M** - Metric (ISO 262)

Pos.6 - Option (Paint)*

- omit - no Paint
- P** - Painted
- PC** - Corrosion Protected Paint

Pos.7 - Design Series

- omit - Factory specified

NOTES:

* The color is by customer's request.

ORDER CODE - SWITCH VALVES

	1	2	3	4
K P W				

Pos.1 - Housing Type

- R** - Valve block for MP and MR Motors
- S** - Valve block for MS Motors
- T** - Valve block for MT Motors
- V** - Valve block for MV Motors

Pos.2 - Ports

- omit - BSPP (ISO 228)
- M** - Metric (ISO 262)

Pos.3 - Option (Paint)*

- omit - no Paint
- P** - Painted
- PC** - Corrosion Protected Paint

Pos.4 - Design Series

- omit - Factory specified

NOTES:

* The color is by customer's request.

ORDER CODE - CROSSOVER RELIEF VALVES

	1	2	3	4	5	6	7
K P				/	/		

Pos.1 - Number of Valves

- D** - Two Valves - Dual
- EA** - One Valve on line A - Single
- EB** - One Valve on line B - Single

Pos.2 - Housing Type

- R** - Valve block for MP and MR Motors
- S** - Valve block for MS Motors
- T** - Valve block for MT Motors
- V** - Valve block for MV Motors

Pos.3 - Housing Design code

- omit - Model 1
- H*** - Model 2

Pos.4 - Max. pressure range, bar (see page 21 and 24)

- 40** - 5÷40, Std Setting 40 bar@5 lpm
- 100** - 30÷100, Std Setting 100 bar@5 lpm
- 250** - 80÷250, Std Setting 250 bar@5 lpm
- 210**** - 80÷210, Std Setting 210 bar@5 lpm

Pos.5 - Ports

- omit - BSPP (ISO 228)
- M** - Metric (ISO 262)

Pos.6 - Option (Paint)***

- omit - no Paint
- P** - Painted
- PC** - Corrosion Protected Paint

Pos.7 - Design Series

- 1** - series 1- cast iron housing
- 2** - series 2- aluminum housing (only for KP...RH, KP...S, KP...SH)

NOTES:

* Useful for types **R** and **S** only .

** Useful for types **T** only .

*** The color is by customer's request.

The Valve Blocks are mangano-phosphatized as standard.