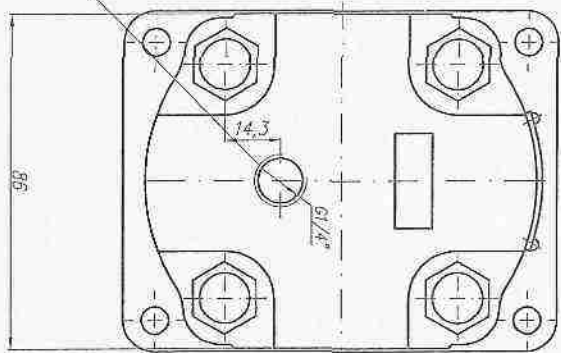
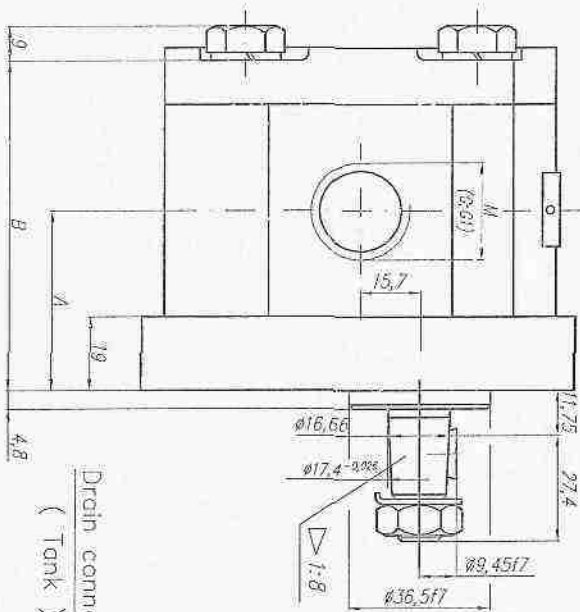
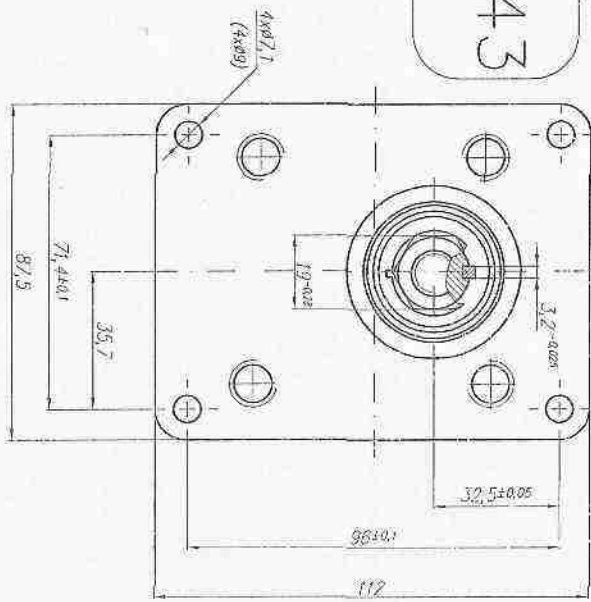
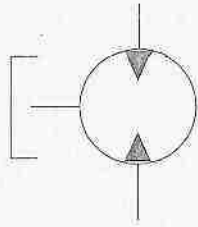


20MR...X543



Type Тип Tun	Displacement Ёмкостной объём Рабочий объём q, [л/с]	Pressure Давление Pmax, [МПа]	Frequency Drehzahl Обороты n, [min ⁻¹]	Dimensions Abmessungen Размеры					
				A	B	Inlet Saugseite Bxog		Outlet Druckseite Bxog	
				mm	mm	M	G	M	G
20MR4.5X543N...	4.5		650...3500	42.5	80	M20x1,5	G1/2"	M20x1,5	G1/2"
20MR6.3X543N...	6.3			44	83				
20MR8.2X543N...	8.2	20		45.5	85.9	M27x2	G3/4"	M27x2	G1"
20MR10X543N...	10			47	89				
20MR11X543N...	11			48	91.1	M27x2	G3/4"	M27x2	G1"
20MR12X543N...	12			48.6	92.3				
20MR14X543N...	14			50	95.4	M27x2	G3/4"	M27x2	G1"
20MR15X543N...	15			51	96.9				
20MR16X543N...	16			52	98.6	M27x2	G3/4"	M27x2	G1"
20MR19X543N...	19	18		54	101.5				
20MR22X543N...	22		57	108.6	M27x2	G3/4"	M27x2	G1"	
20MR25X543N...	25	16	59.2	113.4					

Drain connection
(Tank)