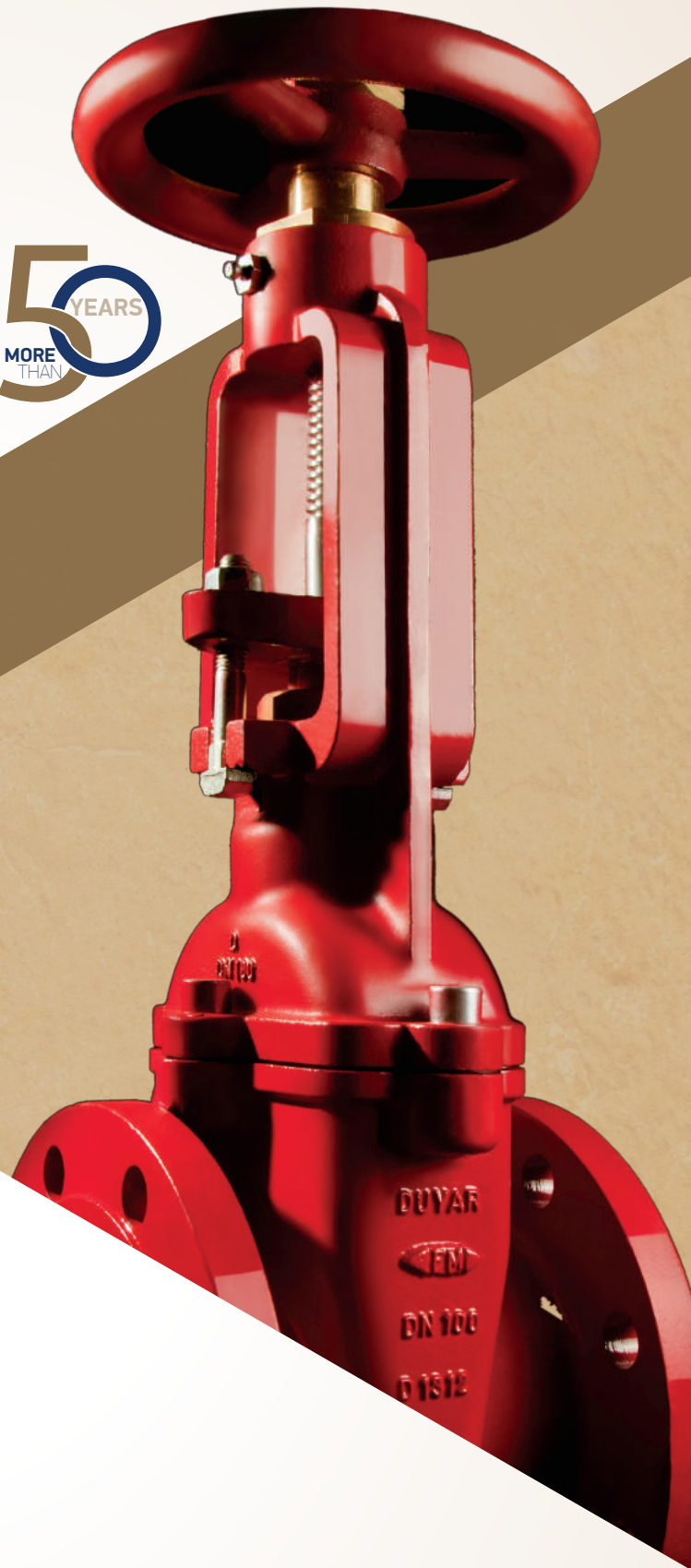


# PRODUCT BROCHURE

5 YEARS  
MORE THAN



### PENDENT SPRINKLER



DY-3327 ½"   K 5,6 (80) Standard Response	DY-3337 ¾"   K 8,0 (115) Standard Response	DY-3427 ½"   K 5,6 (80) Quick Response	DY-3437 ¾"   K 8,0 (115) Quick Response
---	--	--	---

½" NPT, ¾" NPT

Chrome Plated - Raw Brass - White Coated  
57, 68, 79, 93, 141 °C (135, 155, 175, 200, 286 °F)

### UPRIGHT SPRINKLER



DY-3323 ½"   K 5,6 (80) Standard Response	DY-3333 ¾"   K 8,0 (115) Standard Response	DY-3423 ½"   K 5,6 (80) Quick Response	DY-3433 ¾"   K 8,0 (115) Quick Response
---	--	--	---

½" NPT, ¾" NPT

Chrome Plated - Raw Brass - White Coated  
57, 68, 79, 93, 141 °C (135, 155, 175, 200, 286 °F)

### SIDEWALL SPRINKLER



DY-3329 ½"   K 5,6 (80) Standard Response	DY-3338 ¾"   K 8,0 (115) Standard Response	DY-3429 ½"   K 5,6 (80) Quick Response	DY-3438 ¾"   K 8,0 (115) Quick Response
---	--	--	---

½" NPT, ¾" NPT

Chrome Plated - Raw Brass - White Coated  
57, 68, 79, 93, 141 °C (135, 155, 175, 200, 286 °F)

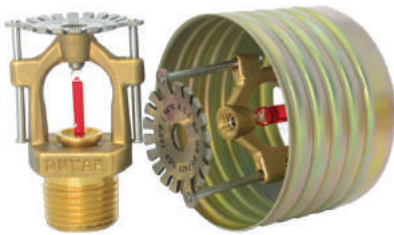


To Reach Current Sprinkler Certification List

- Scan QR code
- Visit our website
- Contact us



### CONCEALED PENDENT SPRINKLER



DY-3328 ½"   K 5,6 (80) Standard Response	DY-3428 ½"   K 5,6 (80) Quick Response
---	--

½" NPT

Raw Brass  
57, 68, 79, 93, 141 °C (135, 155, 175, 200, 286 °F)

### SPRINKLER ESCUTCHEONS



DY-3011 | Chrome    DY-3012 | White

Used for ½" and ¾" NPT  
Chrome Plated, White Coated

### SPRINKLER ACCESSORIES



DY-3000 Sprinkler Stop Valve	DY-3013 (6 PCS) DY-3014 (12 PCS) Spare Sprinkler Cabinet	DY-3015 Sprinkler Wrench
------------------------------------	--	--------------------------------

½" and ¾"

### WET ALARM VALVE



Y-4010 | Ductile Iron

DN 65 .. 200  
300 Psi (20,7 Bar)  
Flanged

+ Trim Set + Retard Chamber + Pressure Switch  
+ Gong Included

### OS&Y GATE VALVE | 175 PSI



T-1425 | Ductile Iron

DN 65 .. 200  
175 Psi (12,1 Bar)  
Flanged

### OS&Y GATE VALVE | 300 PSI



Y-4040  
Ductile Iron



Y-4045  
Ductile Iron

Y-4040 | DN 65 .. 200  
Y-4045 | DN 250-300  
300 Psi (20,7 Bar)  
Flanged

### SUPERVISORY SWITCH FOR OS&Y GATE VALVES



Y-3008

2" .. 12"  
Potter

### NRS GATE VALVE



Y-4050 | Ductile Iron

DN 65 .. 200  
175 Psi (12,1 Bar)  
Flanged

### POST INDICATOR FOR NRS VALVES



POST 1

2 1/2" .. 12"  
Vertical Type  
250 PSI (16,2 Bar)  
APC

### TEST & DRAIN VALVE



Y-4030 | Brass  
1/2" Orifice  
K5.6 (80)

Y-4031 | Brass  
1 7/32" Orifice  
K80 (115)

1" - 1 1/4" - 1 1/2" - 2"  
DIN BSP | ANSI NPT  
300 Psi (20,7 Bar)  
Threaded

### INDICATOR BUTTERFLY VALVE



Y-4020 | Ductile Iron

DN 65 .. 300\*  
300 Psi (20,7 Bar)  
Wafer Type

\*DN 250 and DN 300 are only UL Listed

### SWING CHECK VALVE



Y-4060 | Ductile Iron

2 1/2" - 12"  
300 Psi (20,7 Bar)  
Flanged  
APC

### DUAL PLATE CHECK VALVE



Y-4070 | Ductile Iron  
Disc: Stainless Steel (AISI 316)

Y-4065 | Cast Iron  
Disc: Ductile Iron

DN 50 .. 350 | PN 16

DN 50 .. 300 | PN 16



### OVERGROUND FIRE HYDRANT



T-1720  
1750 mm

T-1755  
1180 mm

T-1765  
1610 mm

T-1775  
2040 mm

T-1785  
2470 mm

Cast Iron  
DN 80 | PN 16  
Flanged

Cast Iron + Steel Pipe  
DN 100 | PN 16  
Flanged

### UNDERGROUND FIRE HYDRANT



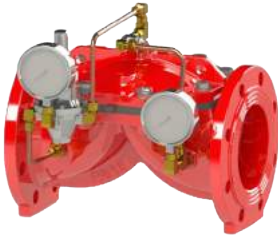
T-1750 | Cast Iron  
DN 80 | PN 16

T-1760 | Cast Iron  
Duckfoot Bend  
DN 80 - 100 | PN 16

T-1770 | Cast Iron  
Surface Box  
DN 80 | PN 16



PRESSURE REDUCER VALVE



Y-7000 | Ductile Iron

2" .. 8"  
250 Psi (17,2 Bar)  
Flanged PN 16  
Copper Piping  
Raphael

Please ask for:  
DIN PN 25, ANSI Class 150, Class 300 Flanges

PRESSURE RELIEF VALVE



Y-7010 | Ductile Iron

2" .. 8"  
250 Psi (17,2 Bar)  
Flanged PN 16 (Corner Type)  
Copper Piping  
Raphael

Please ask for:  
DIN PN 25, ANSI Class 150, Class 300 Flanges

FLOW SWITCH



Y-3004

1" .. 8"  
350 Psi (24,1 Bar)  
Potter

FLOWMETER



Y-3005

2 1/2" .. 8"  
500 Psi (34,5 Bar)  
S Type  
Grooved  
Global Vision

FIRE FIGHTING 2 WAY INLET



Y-3006 | Brass

4" X 2 1/2" X 2 1/2"  
300 Psi (20,6 Bar)  
500 GPM  
NPT Threaded  
+ Coupling + Cover Included  
-Distillings Excluded  
Ban Chang

LANDING VALVE



Y-3009 | Brass

2 1/2" X 2 1/2"  
300 Psi (20,6 Bar)  
500 GPM  
NPT Threaded  
+ Coupling + Cover Included  
-Distillings Excluded  
Ban Chang



Certified  
Sprinkler  
Manufacturer



### STATIC BALANCING VALVE



T-3010 | Bronze

½" .. 2" | PN 25  
Fixed Orifice  
Threaded

### STATIC BALANCING VALVE



T-3020 | Cast Iron

DN 40 .. 300 | PN 16  
Variable Orifice  
Disc: Ductile Iron + Rubber Coated  
Flanged

### STATIC BALANCING VALVE



T-3025 | Ductile Iron

1 ½" .. 12" | PN 16 | Class 150  
Variable Orifice  
Grooved

### STATIC BALANCING VALVE



T-3027 | Ductile Iron

1 ½" .. 12" | Class 150  
Variable Orifice  
Disc: Ductile Iron + Rubber Coated  
ANSI Flanged

### DYNAMIC BALANCING VALVE



T-4010 (CIM 790) | DZR Brass

½" .. 2" | PN 25  
Threaded

### PRESSURE INDEPENDENT CONTROL VALVE (MOTORIZED)



T-4014 | DZR Brass

½" .. 1 ¼" | PN 16  
Threaded

### DYNAMIC BALANCING VALVE



T-4020 | Cast Iron

DN 50 .. 250 | PN 16  
Wafer Type | Lug Type

### BALANCING DEVICE SET



T-4096

Flow Meter + Hand Held Computer + Probes

BALL VALVE | LUG TYPE



CDY-1030 | Ductile Iron

DN 65 .. 200 | PN 16  
Reduced Bore

BALL VALVE | FLANGED



T-0520 Cast Iron (F4)	T-0525 Ductile Iron (F4)	T-0540 Cast Iron (F5)	T-0545 Ductile Iron (F5)
--------------------------	-----------------------------	--------------------------	-----------------------------

DN 15\* .. 100 | PN 16  
Full Bore

DN 125 .. 300\* | PN 16  
Full Bore

\*DN 15 and DN 20 are  
Ductile Iron

\*DN 300 is Reduced Bore

STAINLESS STEEL BALL VALVE | THREADED



T-0630 | Cast Stainless Steel

1/2" .. 4" | PN 40

STAINLESS STEEL BALL VALVE | FLANGED



T - 0610 Cast Stainless Steel	T - 0650 Cast Stainless Steel
----------------------------------	----------------------------------

DN 15 .. 150 | PN 16

DN 15 .. 50 | PN 40

METAL SEATED GATE VALVE | F4



T-1320 | Cast Iron

DN 40 .. 150 | PN 10  
DN 200 .. 300 | PN 6  
DN 350 .. 500 | PN 4  
DN 600 .. 800 | PN 2,5  
Flanged

RESILIENT SEATED GATE VALVE | F4



T-1430 | Cast Iron

DN 40 .. 600\* | PN 16  
Flanged

\*DN 100 and DN 200 are  
Ductile Iron

RESILIENT GATE VALVE | F4



T-1437 | Ductile Iron

DN 40 .. 300 | PN 16  
WRAS Approved  
Flanged

RESILIENT SEATED GATE VALVE | F5



T-1440 | Ductile Iron

DN 40 .. 300 | PN 16  
Flanged

SURFACE BOX



T-1370 | Cast Iron

DN 40 .. 400

## WAFER BUTTERFLY VALVE



T-0910 | Cast Iron

T-0930 | Cast Iron

DN 40 .. 700\* | PN 6 / 10 / 16  
Disc: Ductile Iron, Nickel Plated  
Seat: EPDM (or NBR)

DN 32 .. 600\* | PN 6 / 10 / 16  
Disc: Stainless Steel (CF8)  
Seat: EPDM (or NBR)

\*DN 40 .. 200 With Lever  
\*DN 250 .. 700 With Gear Box

\*DN 32 .. 200 With Lever  
\*DN 250 .. 600 With Gear Box

## WAFER BUTTERFLY VALVE | PN 25



T-1130 | Ductile Iron

DN 65 .. 200 | PN 25  
Disc: Ductile Iron, Rubber Coated  
Face Gasket: EPDM

## RUBBER COATED WAFER BUTTERFLY VALVE



T-1135 | Cast Iron

T-1136 | Ductile Iron

DN 50 .. 200 | PN 16  
Rubber Coated Body  
Disc: Ductile Iron, Nickel Plated  
Seat: EPDM (or NBR)

DN 50 .. 200 | PN 16  
Rubber Coated Body  
Disc: Stainless Steel (CF8)  
Seat: EPDM

## LUG BUTTERFLY VALVE



T-1010 | Ductile Iron

DN 40 .. 600\* | PN 16  
Disc: Ductile Iron, Nickel Plated  
Seat: EPDM (or NBR)

\*DN 40 .. 200 With Lever  
\*DN 250 .. 600 With Gear Box

## LUG BUTTERFLY VALVE



T-1030 | Ductile Iron

DN 40 .. 600\* | PN 16  
Disc: Stainless Steel (CF8)  
Seat: EPDM (or NBR)

\*DN 32 .. 200 With Lever  
\*DN 250 .. 600 With Gear Box

## GEAR BOX FOR BUTTERFLY VALVE



T-1210 | Cast Iron

DN, Torque, Ratio:  
DN 40 .. 150: 170 Nm, 24:1  
DN 200, DN 250: 750 Nm, 30:1  
DN 300, DN 350: 1200 Nm, 50:1  
DN 400, DN 450: 2500 Nm, 80:1  
DN 500: 3000 Nm, 352:1  
DN 600: 4000 Nm, 416:1

## DOUBLE FLANGED BUTTERFLY VALVE



T-5110  
(PN 10)

T-5120  
(PN 16)

T-5125  
(PN 25)

Ductile Iron

DN 80 .. 2000 | PN 10 / 16  
DN 100 .. 300 | PN 25

## TILTING CHECK VALVE



T-5160  
(PN 10)

T-5170  
(PN 16)

Ductile Iron

DN 250 .. 1000

## DISMANTLING JOINT



T-5130  
(PN 10)

T-5140  
(PN 16)

T-5150  
(PN 25)

Ductile Iron

DN 40 .. 2000



## GLOBE VALVE



T-0110 | Cast Iron

DN 15 .. 200 | PN 16  
DN 250 - 300 | PN 10  
Flanged

Disc: AISI 420 SS (DN 15 .. 100)  
ST37 + Stainless Steel (DN 125 .. 300)

## METAL BELLOWS SEALED GLOBE VALVE



T-0160 | Cast Steel    T-0170 | Cast Steel

DN 15 .. 250 | PN 16  
Flanged  
Disc: AISI 420 SS

DN 15 .. 250 | PN 40  
Flanged  
Disc: AISI 420 SS

## INVERTED BUCKET STEAM TRAP



T-1610 | Cast Iron    T-1620 | Cast Iron

DN 15 .. 50 | PN 16  
Flanged  
Bucket: AISI 304 SS

DN 15 .. 50 | PN 16  
Threaded  
Bucket: AISI 304 SS

## SAFETY VALVE | SPRING LOADED



T-1515 | Ductile Iron    T-1530 | Ductile Iron

Proportional Lift

Full Lift

DN 25 .. 100 | PN 16  
Flanged (Corner Type)  
Spring&Seat: Stainless Steel  
Disc&Stem: Stainless Steel

## GLOBE CHECK VALVE



T-0250 | Cast Iron

DN 15 .. 200 | PN 16  
DN 250 .. 300 | PN 10  
Flanged

## WAFER DISC CHECK VALVE



T-0310 | Brass    T-0320 | Ductile Iron

DN 15 .. 100 | PN 16  
Disc: AISI 304 SS  
Spring: AISI 302 SS

DN 40 .. 200 | PN 16  
Disc: Ductile Iron  
Spring: AISI 302 SS

## WAFER DUAL PLATE CHECK VALVE



T-0330 | Cast Iron

DN 50 .. 600 | PN 16  
Disc: Ductile Iron  
Spring: AISI 302 SS

## SWING CHECK VALVE



T-0410 | Cast Iron

DN 40 .. 350 | PN 16  
Flanged  
Disc: Ductile Iron + Rubber Coated  
Stem: AISI 420 SS

## WAFER SWING CHECK VALVE

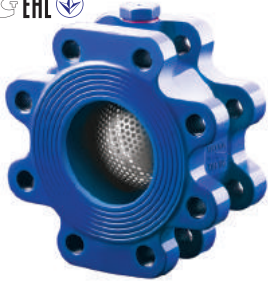


T-0430 | Cast Carbon Steel

Nickel Plated  
DN 40 .. 300 | PN 16  
O-ring: EPDM - NBR



## STRAIGHT TYPE STRAINER | LUG



CVT-1010 | Ductile Iron

DN 65 .. 400 | PN 16  
Filter: Stainless Steel

## Y TYPE STRAINER



T-0820 | Cast Iron

DN 15 .. 800\* | PN 16  
Flanged  
Filter: AISI 304 SS

\* DN 350 .. 800 Ductile Iron



Innovative  
**Valve**  
**Developer**

## RUBBER EXPANSION JOINT



T-1810 | Ductile Iron

DN 25 .. 600\* | PN 16  
Flanges: Ductile Iron + Zinc Galvanized  
Joint: Corded Rubber

\*DN 350 .. 600  
Flanges: St 37 Steel + Zinc Galvanized

## METAL BELLOWS EXPANSION JOINT



T-1820 | Steel

T-1840 | Steel

Rotary Flanged  
Without Liner  
Stainless Steel Bellow

DN 25 .. 300 | PN 16  
Movement 30 mm

DN 65 .. 300 | PN 16  
Movement 60 mm

## METAL BELLOWS EXPANSION JOINT



T-1830 | Steel

T-1850 | Steel

Rotary Flanged  
With Stainless Steel Liner  
Stainless Steel Bellow

DN 25 .. 300 | PN 16  
Movement 30 mm

DN 65 .. 300 | PN 16  
Movement 60 mm

## METAL BELLOWS EXPANSION JOINT



T-1950 | Steel

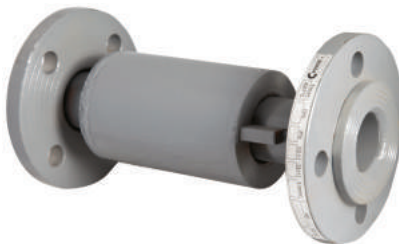
T-1960 | Steel

Welding Ends  
Without Liner  
Stainless Steel Bellow

DN 25 .. 250 | PN 16  
Movement 30 mm

DN 65 .. 250 | PN 16  
Movement 60 mm

## METAL BELLOWS EXPANSION JOINT



Flanged | Steel

DN 25 .. 250 | PN 16  
External Pressured  
Stainless Steel Bellow

T-1970 | Movement 30 mm  
T-1980 | Movement 60 mm  
T-1985 | Movement 60 mm  
T-1986 | Movement 120 mm

## METAL BELLOWS EXPANSION JOINT



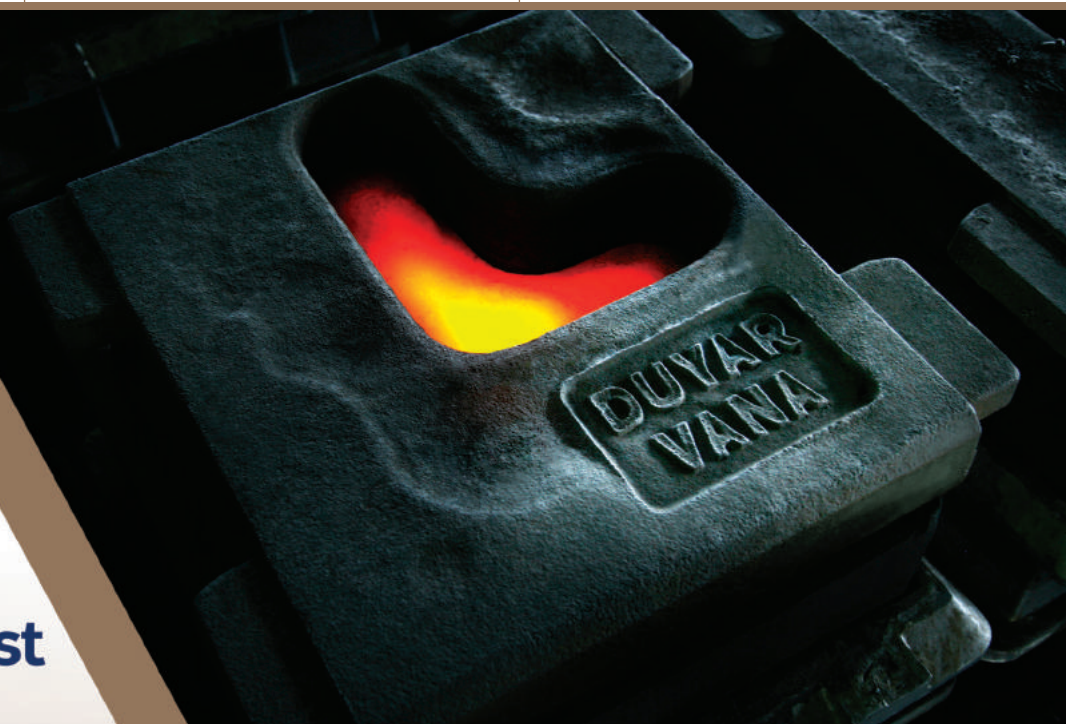
Welding Ends | Steel

DN 25 .. 250 | PN 16  
External Pressured  
Stainless Steel Bellow

T-1990 | Movement 30 mm  
T-1995 | Movement 60 mm  
T-1996 | Movement 60 mm  
T-1997 | Movement 120 mm



Valve  
Casting Specialist



## BRASS BALL VALVE



T-2110

Threaded  
 ½" .. 2" | PN 25  
 2 ½" .. 4" | PN 16  
 Full Bore

## BRASS BALL VALVE | BUTTERFLY LEVER



T-2120

Threaded  
 ½" .. 1" | PN 25

## BRASS CHECK VALVE WITH SPRING



T-2210

Threaded  
 ½" .. 4" \* | PN 10  
 Conical Type Floater  
 NBR Gasket

\* 3" and 4" are Flat Type

## BRASS Y TYPE STRAINER



T-2220

Threaded  
 ½" .. 3" | PN 16  
 O-Ring: EPDM  
 Filter: Stainless Steel

## AUTOMATIC AIR VENT



T-2260

Threaded  
 ½" | PN 10  
 Safety Valve: Ebonite  
 Floater: Ebonite



in **5** continents





[www.duyarvalve.com](http://www.duyarvalve.com)

TURKISH  
**valve**  
fire products  
**manufacturer**

**DUYAR** 

**HEADQUARTER @MAIN FACTORY**

Osmangazi Mh. 2653 Sk. No:7  
34522 Esenyurt / Istanbul / Turkey  
**phone** : + 90 212 668 1807 (pbx)  
**fax** : + 90 212 355 0747  
**e-mail**: info@duyarvalve.com

**SALES OFFICE**

Oruc Reis Mh. Tekstilkent Cad. No:12B  
34235 Koza Plaza A Block Floor:26 No:262  
Esener / Istanbul / Turkey  
**phone** : + 90 212 444 8262 (pbx)  
**fax** : + 90 212 355 0747  
**e-mail**: info@duyarvalve.com



BROCHURE



/duyarvana