

RW45L Motor gearboxes



The RW45L motor gearboxes equipped with a cable or belt drum are compact, maintenance-free drive units for hoisting feeding and drinking lines, and opening air inlets in livestock houses. The easy-to-install RW45L motor gearboxes are enclosed in a housing with a sealed limit-switch system that has a high protection rating of IP55. The RW45L motor gearboxes are designed to operate at ambient temperatures between 0 and 40°C.

All RW45L motor gearboxes feature a self-braking worm gear transmission. The RW motor gearbox's self-braking worm gear transmission ensures that the output shaft is braked when the drive unit is stopped. The combination of carefully matched pinion and worm reductions results in a very silent mechanical transmission.

The RW45L motor gearboxes feature a patented integrated linear limit-switch system with duty and safety switches having excellent switching precision. The maximum switching range of the limit-switch system equates to 55 revolutions of the drive shaft. The optional RPU PositioningUnit accurately monitors the current position of a drive system and transmits this data back to your climate computer or controller. This position feedback can also be achieved using an installation set with a potentiometer.

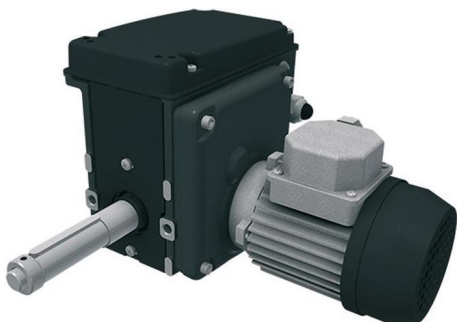
The RW45L motor gearboxes are finished with a graphite grey powder coating and are supplied including fixing bolts and spring washers.

RW45L Motor Gearboxes:

- Drive torques up to 120 Nm at 50 Hz and 60 Hz mains frequencies;
- Rotation speeds of 1 to 5 rpm at 50 Hz, 1.2 to 6 rpm at 60 Hz mains frequency;
- Suitable for intermittent operation, operating class s3-s35%, duty cycle maximum 25 minutes;
- Provided with a one-sided output shaft for mounting a cable drum or belt drum;
- Manual drive enabled by means of a hexagon socket in the electric motor shaft;
- Electric motors are standard tropic-proof and conform to protection class IP55;
- Available with 3-phase electric motors, 400 V at 50 Hz (eurovoltage, EM type A);
- Or with 3-phase electric motors with CSA and UL approval, 208-415 V at 50/60 Hz and 415-480 V at 60 Hz (wide voltage, EM type B);
- Or with 1-phase electric motors, 230 V at 50/60 Hz (EM type D);
- Or with 1-phase electric motors with CSA and UL approval, 115 V at 60 Hz (EM type F);
- Other specifications available on request.



RW45L Motor gearboxes



Art. no.	Description	[m] kg	[M] 50Hz Nm	[n] 50Hz /min	[M] 60Hz Nm	[n] 60Hz /min	EM	F ~	PTC	CSA UL	EM nr
531100	RW45-1L-09\400\3\55\IP55	17,0	120	1,0			A	3	•		763010
531130	RW45-3L-09\400\3\55\IP55	17,0	90	3,0			A	3	•		763010
531160	RW45-5L-09\400\3\55\IP55	17,0	60	5,0			A	3	•		763010
531110	RW45-1L-09\230\1\55\IP55	16,5	120	1,0	120	1,2	D	1			761001
531140	RW45-3L-09\230\1\55\IP55	16,5	90	3,0	90	3,6	D	1			761001
531170	RW45-5L-09\230\1\55\IP55	16,5	60	5,0	60	6,0	D	1			761001