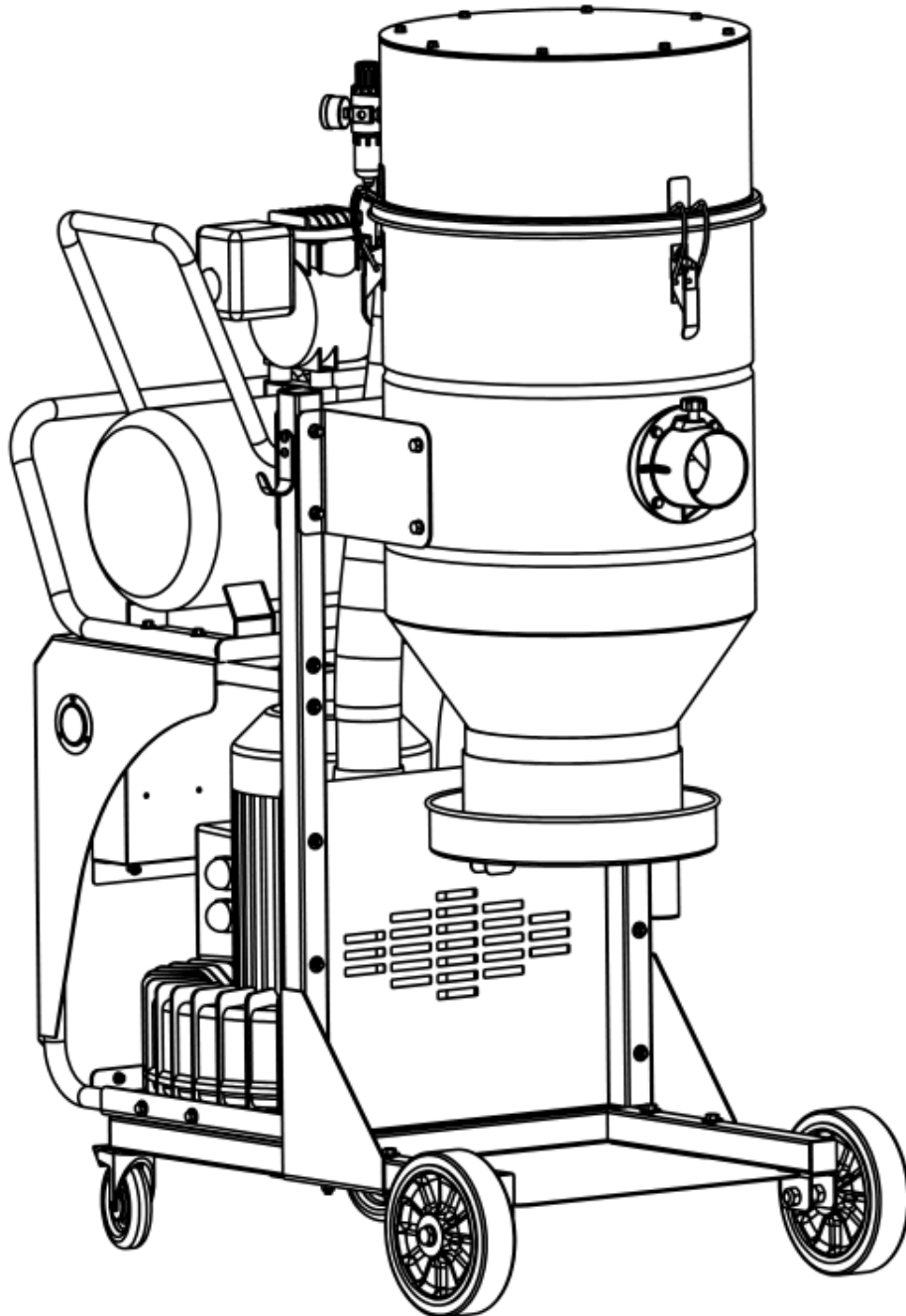


INSTRUCTIONS MANUAL



ALT55 DUST EXTRACTOR

INTRODUCTION

Thank you for purchasing the HURRICANE branded Industrial Vacuum Cleaner, a high-quality product based on the newest state-of-the-art technology. We hope that this device will be to your satisfaction and meet your expectations.



NOTICE!

Notice!

- 1. These instructions are only for HURRICANE ALT55 Dust Extractors.**
- 2. The ALT55 Dust Extractors are designed to clean construction areas and be connected to medium and big grinders. This machine can only be used with dry, non-explosive material.**
- 3. Please pay particular attention to the safety regulations and safety instructions**
- 4. Read the complete instruction manual before using.**
- 5. All spare parts and accessories used with this device must be those specified by HURRICANE.**
- 6. Check before and after use that all the switches are in OFF position.**



The packaging material can be recycled. Please do not throw the packaging material into household waste; please send it for recycling.



Old devices contain valuable materials that can be recycled; these should be sent for recycling. Batteries, oil, and similar substances must not enter the environment. Please dispose of your old devices using appropriate collection systems.

Table of Contents

1.Unpacking	1
2.SAFETY INSTRUCTIONS	1
3.Function	2
4. Filter cleaning	3
5. Filter change	3
6. Dust Storage System	3
7.Maintenance	4
8.Warranty	4
9.Problem solving	5
10.Technical data	6
..... 11.ALT55 Dust extractor.Diagram and.Parts: . .	7
12.Contact information	8

1.Unpacking

Unpacking the device. Dispose of the packing materials in compliance with the laws in force.

Please check that the following accessories are included:

- * Inlet adapter
- * Hose with both end hose-cuff

If any of the above-mentioned parts are missing, please contact your local distributor.

2.SAFETY INSTRUCTIONS

When using an electrical appliance, basic precautions should always be followed, including the following:

WARNING – To reduce the risk of fire, electric shock or injury:

- Cables damaged through crushing or splitting can be dangerous if used and should be replaced immediately. Risk of personal injury.
- Make sure the assembly area is firm, so the dust extractor does not tip over. Risk of personal and material injury.
- Risk of pinching when handling the toggle fasteners.
- The machine must not be used in environments where explosive gases may be present. Serious risk of explosion.
- Improper connection of the equipment-grounding conductor can result in a risk of electrical shock. Check with a qualified electrician or service person if you are in doubt as to whether the outlet is properly grounded. Do not modify the plug provided with the machine. If it will not fit the outlet. Have a proper outlet installed by a qualified electrician.
- Before using the machine, make sure that the power & voltage corresponds with the voltage shown on the machines rating plate.
- Do not leave machine when plugged in. Unplug cord from outlet when not in use and before cleaning or servicing machine.
- Do not use outdoors or on wet surface, this machine is for indoor and dry use only.
- Do not allow to use as a toy. Close attention is necessary when used by or near children.
- Use only as described in this manual. Use only manufacturers recommended attachments.
- Operators shall be adequately instructed on the use of the machine
- This machine is not intended for use by persons (including children) with reduced physical, sensory or mental capabilities, or lack of experience and knowledge.
- Do not use with damaged cord or plug. If the machine is not working as it should, has been dropped, damaged, left outdoors or dropped in water. Make sure it is repaired by a qualified person.
- Do not pull or carry by cord, use cord as handle, close a door on cord, or pull cord around sharp edges or corners. Do not run the machine over cord. Keep cord away from heated surfaces.

- Do not unplug by pulling on cord. To unplug, grasp the plug. Not the cord.
- Do not handle plug or machine with wet hands.
- Regularly inspect cord and plug for damage. If cord is damaged, it must be replaced by a qualified person in order to avoid hazard.
- Do not put any object into openings. Do not use with any opening blocked (accept during filter cleaning procedure). Keep free of dust, hair and anything that may reduce airflow.
- Keep hair, loose clothing, fingers and all parts of body away from openings and moving parts.
- Turn off all controls before unplugging.
- Do not use to pick up flammable or combustible liquids, such as gasoline, or use in areas where they may be present.
- Do not pick up any type of liquids.
- Do not pick up anything that is burning or smoking, such as cigarettes, matches or hot ashes.
- Use extra care when cleaning on stairs.
- Do not use without dust bag and/or filters in place. Replace collection system and/or filters as described in manual.
- If using an extension cord make sure the cord rating is suitable for this machine.
- Do not modify machine from its original design.
- Keep children and unauthorized persons away from machine when in use.
- All repairs must be performed by a qualified service person. Use only manufacturer-supplied or equivalent replacement parts.
- Do not expose machine to rain or moisture. Store indoors only.
- Connect to a properly grounded outlet only. See grounding instructions.

THERMAL PROTECTION

- The dust extractor is equipped with a safety thermal protector to prevent motor from overheating. Should thermal protector activate, turn off machine, unplug power cord and check for full dust bag, vacuum hose clog or filter blockage. It may take up to 45 minutes for the thermal protector to reset.

GROUNDING INSTRUCTION

- The dust extractor must be grounded. If it should malfunction or breakdown, grounding provides a path of least resistance for electric current to reduce the risk of electric shock. The dust extractor is equipped with a cord having an equipment-grounding conductor and grounding plug. The plug must be inserted into an appropriate outlet that is properly installed and grounded in accordance with all local codes and ordinances.

SAFETY LABEL

- The following label appears on the machine, next to the machines rating plate. Replace label if it is missing, becomes damaged or illegible. Failure to follow this warning label may result in fire, electric shock or injury

3.Function

ALT55 equipped with a three phase powerful turbine motor. The machine has three HEPA filters inside, is for sucking and separating dry, non-combustible dust with an explosion limit value of 0.1mg/m³

The motor is started by switches. Dust-laden air is then sucked through the inlet valve at high speed via the suction hose. The air is slowed down by the cyclone and coarse dust particles are

separated out, partly by centrifugal force and partly by gravity. Air and finer particles then pass through the filter system where they are separated. The separated dust accumulates in the cyclone until the machine is switched off, when it drops through the bottom flap into the plastic bag.

4. Filter cleaning

The machine is designed for automatic jet-pulse filter cleaning, which can clean the filter by itself from time to time. Air compressor keeps supplying compressed air @4-6Kg to an air tank. Controller controls the 3 valves open/close with a pre-set frequency and sequence. When a valve open, the compressed air blusters into the filter inside out, blowing off dusts from the filter surface. When the vacuum starts operation, the jet-pulse filter cleaning is automatically working. Each valve open/close at a pre-set time interval and frequency.

If suction becomes poor, the filter needs to be replaced. The plastic bag may only be replaced after cleaning the filter. The plastic bag must be tied up after removal. Only use original parts.

5. Filter change

Risk of dust dispersion -Use of personal safety equipment Unhealthy dust can be spread during filter change. Accordingly, the user should wear protective glasses, protective gloves, and a breathing mask conforming to protection class FFP3.

Turn the machine off and pull the plug out of the socket.

Loosen the clamp between the upper and lower housing. Remove the hose connection Lift out the filter holder and place it carefully on a table. Remove all screws and then remove the filter and place it in a plastic bag. Insert a new filter in reverse order. Tighten the screws hard. Only original filters may be used.

6. DUST STORAGE SYSTEM

The dust extractors are mainly equipped with Longopac system for effective dust storage or a regular plastic bag system depending on model. Longopac is a 22 m long plastic tube that will be divided into plastic bags using the zip ties attached with the machine.

To assemble a new Longopac bag: Release the belt holding the last bag. Remove the holder, put in a new Longopac bag & pull out the inner end upwards. Assemble the holder on to the machine and strap the opening facing upwards with the belt. Pull down the outside end and close

it using a zip tie.

All dust extractors can be used with original HURRICANE dust bags for single use. Also all models can be fitted with the longopac system. Only change Longopac or regular bag after filter cleaning cycle have been completed.

7.Maintenance

When cleaning and servicing the machine, you must switch off the machine and remove the plug from the outlet.

- Avoid cleaning with a high pressure cleaner. If necessary, do not direct at the openings on the machine, especially the inlet/outlet for the cooling air.

- Before moving the machine from the work area, the machine must first be cleaned.

Furthermore, the inlet must be locked using the expanding plug attached.

- All other equipment must be regarded as contaminated and be treated thereafter.

- If possible, use a special suitable room.

- Proper personnel protective equipment must be used.

- All parts which are contaminated after service must be carefully disposed of in plastic bags according to local regulations.

- If the machine has to be used for other purposes, it is extremely important that the machine is cleaned, to avoid the spread of hazardous dust.

8.Warranty

All HURRICANE devices and accessories have a 12-month factory warranty for material and manufacturing defects. Do not attempt to repair the suction apparatus without the consent of the manufacturer. The warranty does not cover defects which are the result of normal wear and tear, negligence, defective use, unauthorised repair or the suction apparatus being connected to the incorrect voltage. In the event of any complaint, the suction apparatus or an agreed part of it must be returned to us or our authorised representative for warranty examination and for any warranty repair or replacement.

9.Problem solving

The dust extractors are designed and manufactured for severe environments and tasks, but the user must note that the machine must be protected from knocks and blows. Filter, seals, attachments, and connections are carefully adapted and selected with regard to the operator's work environment. Therefore, the operator and service personnel must treat the machine with care in order for it to work correctly for many years.

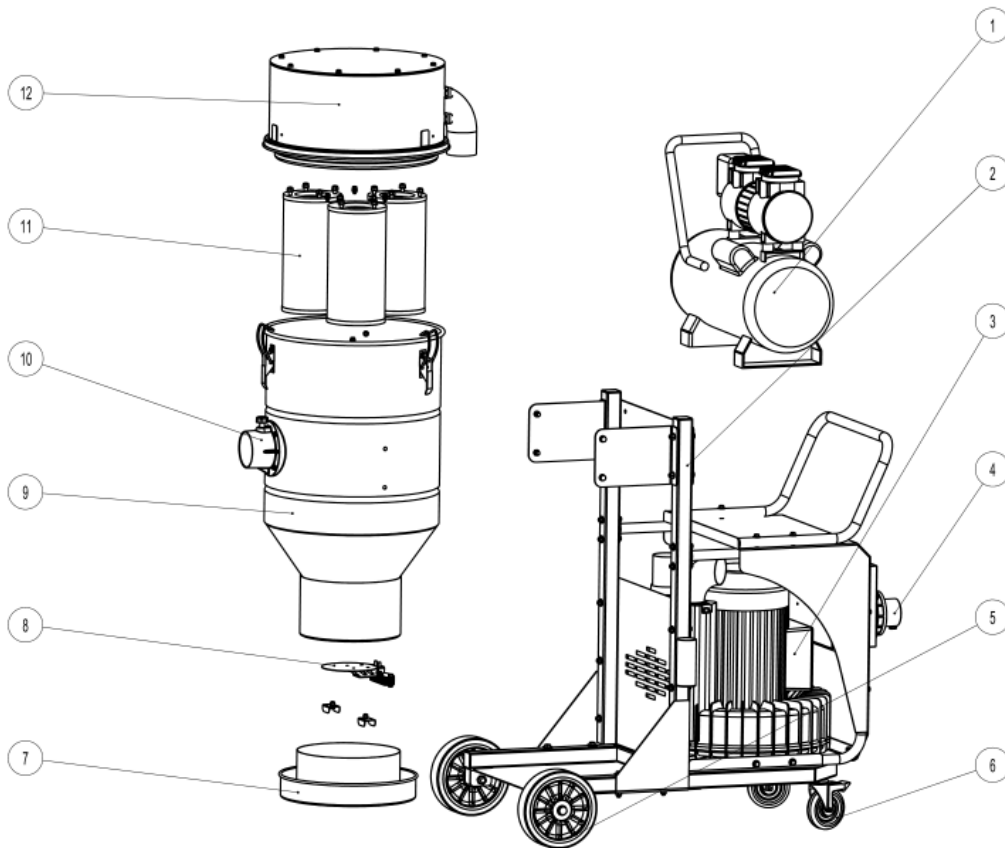
Issue	Cause	Solution
Motor doesn't start	No power	Plug in machine
	Cable defective	Replace cable
	Switch defective	Replace switch
	Soft start defective	Replace soft start
Motor stops immediately after starting	Wrong fuse	Connect to correct fuse
	Shortcut in cable/machine	Order service
Motor runs but there is no suction	Hose not connected	Connect hose
	Hose clogged/blocked	Clean hose
	No dust collection bag	Fit dust collection system
Motor runs but poor suction	Hole in hose	Replace hose
	Filter clogged	Clean filter/Replace filter
	Loose top cover	Adjust
	Defective gaskets	Replace affected gaskets
Dust blown from motor	Wrongly assembled or damaged filter system	Adjust/Replace filters
Abnormal noise		Order service

KEEP THESE INSTRUCTIONS!

10. Technical data

Model	ALT54	ALT55	ALT56	ALT57	ALT58
Motor(kw)	4.0	5.5	6.3	7.5	8.6
Voltage(V/Hz)	380/50	380/50	480/60	380/50	480/60
Max Vacuum(mbar)	260	300	320	320	350
Max air-flow(m3/h)	420	530	620	530	620
Inlet(mm)	70				
Filter area(m2)	3.5	3.5	3.5	3.5	3.5
Filter capacity	0.3µm, efficiency>99%				
Dimension(L*W*H)	680*1070*1540 mm				
Weight(kg)	145	165	165	170	170

11.ALT55 Dust extractor Diagram and Parts:



- 1 Air compressor
- 2 Sturdy frame
- 3 Three phase turbine motor
- 4 Electrical connector
- 5 8" inch rear wheels.
- 6 4" lockable front swivel casters.
- 7 Drop-down poly-bag disposal, Longopac compatible.
- 8 Flap Assembly kit.
- 9 Powder coated stainless steel barrel
- 10 Dust Suction Connection (inlet) / 3" Die-casting Inlet
- 11 Cylinder HEPA filter
- 12 Top hat

