

**Input data**

System of measurement		Metric
Input type		Gear motor
Input speed	[rpm]	1400
Output speed	[rpm]	70
Ratio (i=)		20
Frequency	[Hz]	50
Input options		IEC
Requested input power	[kW]	0.18
Service factor		1.1
Thermal power	[kW]	0.2

**Output data**
**Gear unit** **BFK 30 P 20 63\_B14 B3 H14**

Type		BFK - Worm gearboxes
Input type		Gear motor
Size		30
Ratio (i=)		20
Input flange		B14
Mounting position		B3
Input speed	[rpm]	1400
Output speed	[rpm]	70
Rated output torque	[Nm]	17.68
Service Factor		1.1
Efficiency		0.72

**Gear unit configuration**

Output shaft		H14
Fixing		Shaft mounting

**Output radial and axial loads**

Ball bearings output radial load	[N]	900
Taper bearings output radial load	[N]	1250
Ball bearings output axial load	[N]	180
Taper bearings output axial load	[N]	1650

**Electric motor**

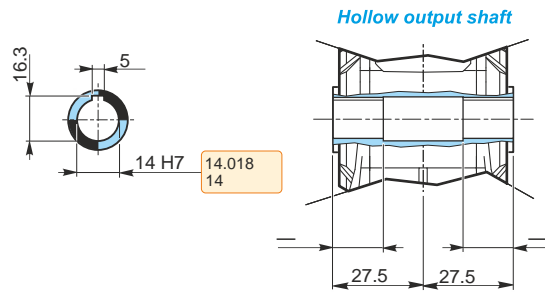
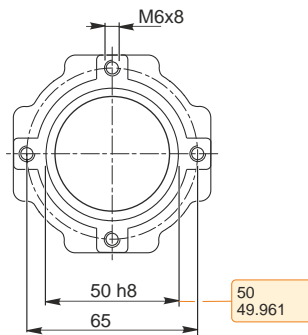
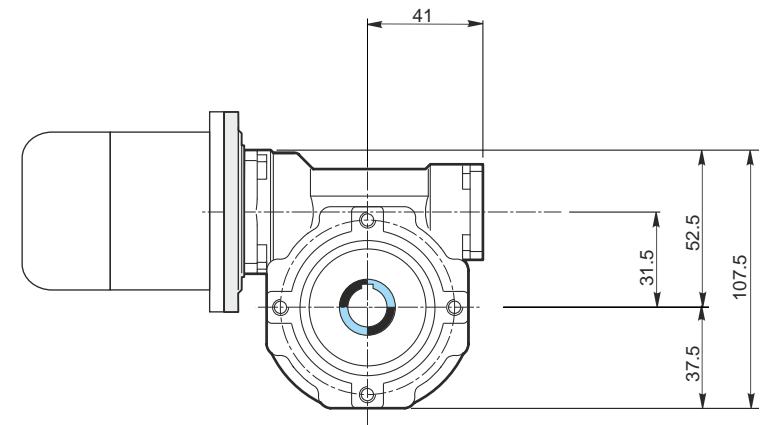
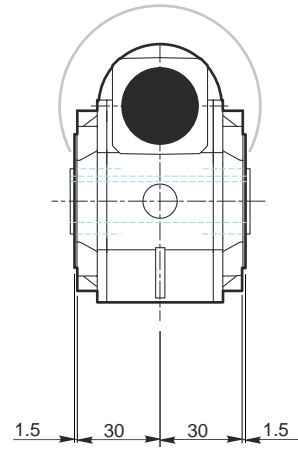
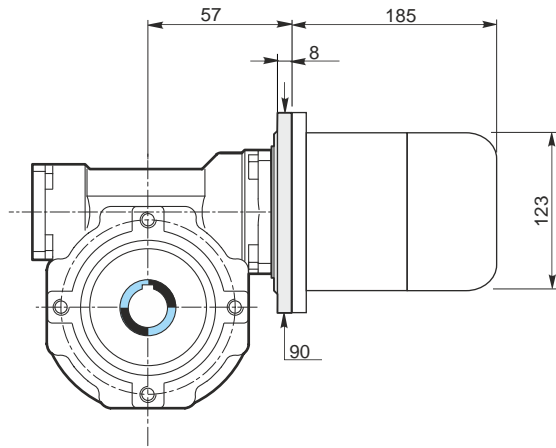
Size		63 B
Poles		4
Power	[kW]	0.18

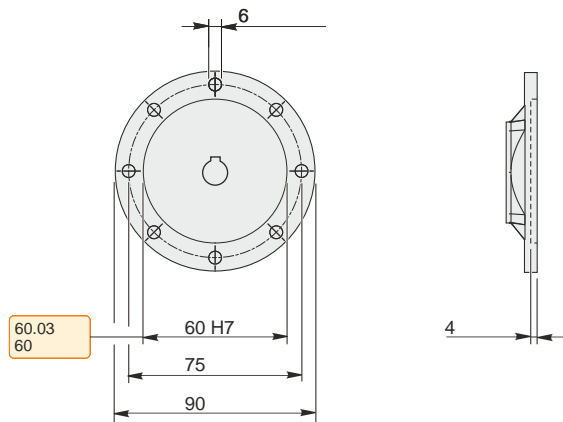
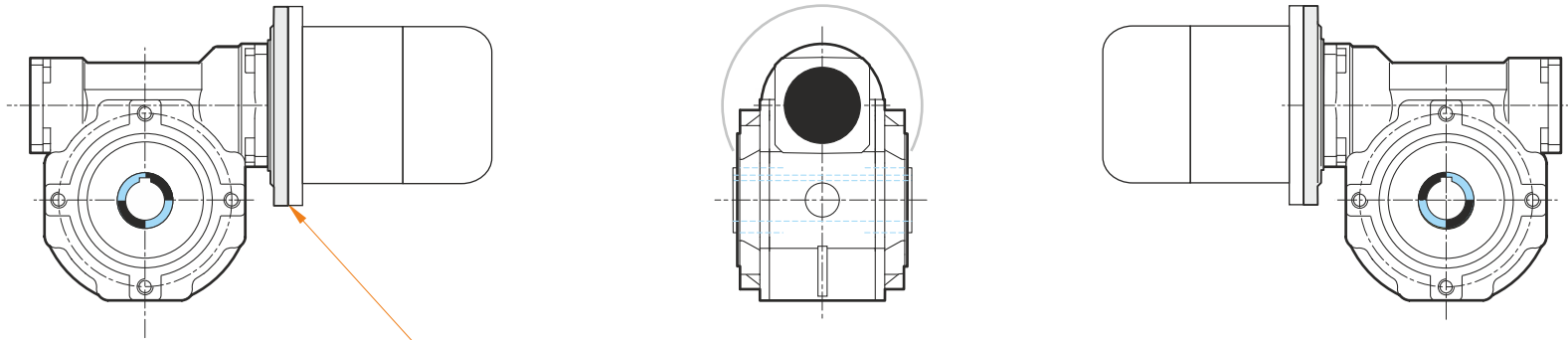
**Electric motor configuration**

Motor flange		B14
Terminal box position		A

**Electric motor configuration**

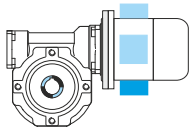
Voltage		230/400 V - 50 Hz
---------	--	-------------------



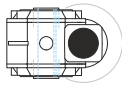


### Mounting positions

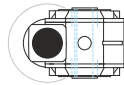
B3



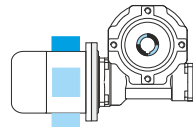
B6



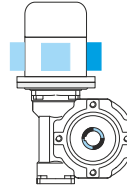
B7



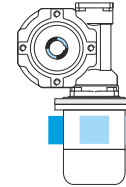
B8



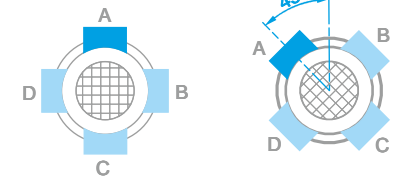
V5



V6



Terminal board position



PM = 1

PM = 2

The dimensions of the electric motors are approximate values

0.015

0.015

0.015

0.015

0.015

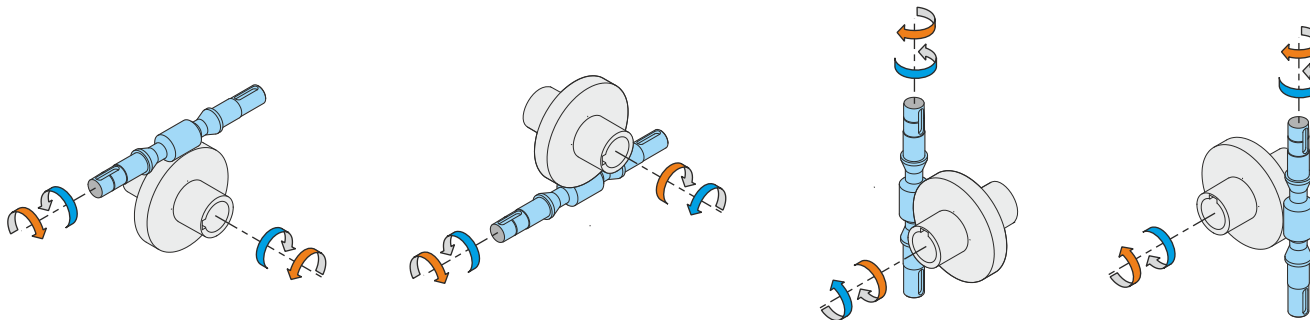
0.015



← Oil quantity [litres]

Lubricant type: Long life synthetic oil ISO VG320

### Direction of rotation



### Weight

Gear unit [kg]	1.2
Electric motor [kg]	4.3