



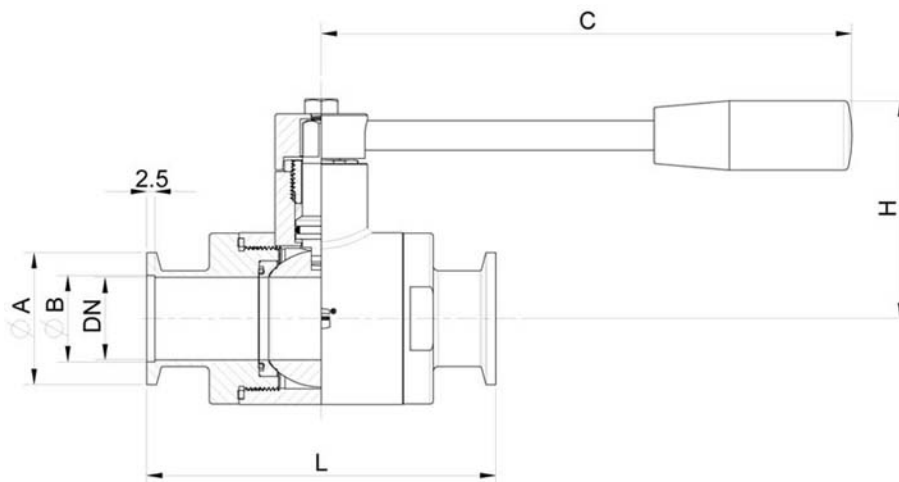
## 100133\_KF

Two-way ball valve  
 Drive: Inox lever  
 Connection: KF  
 Flow: full and reduced  
 Material: Aisi 316L  
 Measure: from da DN10 to DN50  
 Seals: virgin P.T.F.E. with OR  
 Operating temperature: -20°C +160°C  
 Outer finish: polished

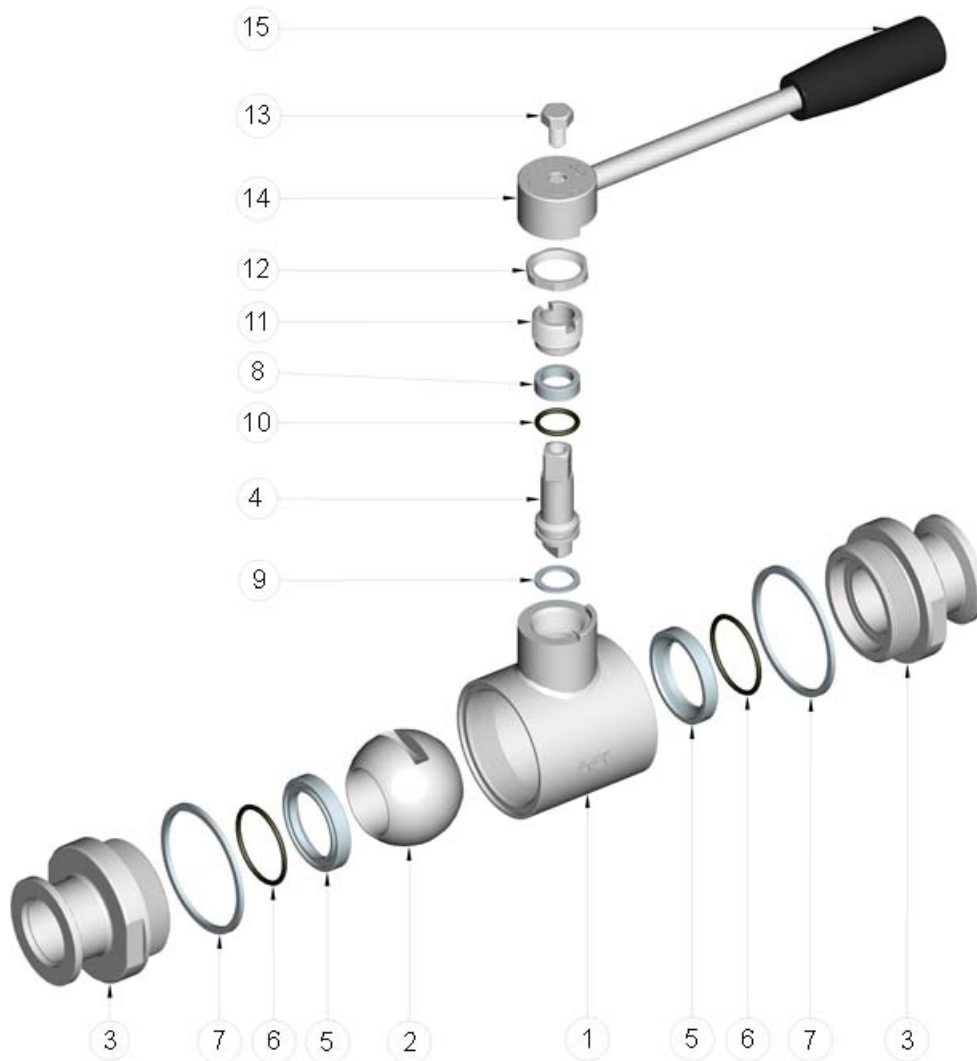
### On request

Antistatic device ATEX (Directive 94/9/EC)

- Seals made of:  
 P.T.F.E. with glass  
 P.T.F.E. with carbographite  
 High-molecular weight polyethylene



KF	DN	L	Ø A	Ø B	C	H	PN	Kg	CODE AISI 316L
30	10	88	30	12.2	110	50	64	0,43	100133 60860
30	15	92	30	17.2	110	55	64	0,51	100133 61460
40	20	102	40	22.2	110	60	64	0,93	100133 62060
40	25	106	40	26.2	160	65	40	1,33	100133 62660
55	32	112	55	34.2	160	70	40	1,42	100133 63060
55	40	126	55	41.2	190	80	40	2,43	100133 63460
75	50	136	75	52.2	190	90	25	3,51	100133 63860



POS.	DENOMINATION	PCS	MAT.
1	Body	1	AISI 316L
2	Ball	1	AISI 316L
3	Sleeves	2	AISI 316L
4	Stem	1	AISI 316L
5	Ball seals	2	PTFE
6	OR ball seals	2	FKM
7	Sleeve seals	2	PTFE
8	Stem seal	1	PTFE
9	Stem seal	1	PTFE
10	Stem OR-seal	1	FKM
11	Register ring	1	AISI 304L (303)
12	Locknut	1	AISI 304L
13	Screw	1	AISI 304L
14	Lever	1	AISI 304L
15	Handle	1	Resina

