



Best Ice Cream



LOCATIONS

INTERNATIONAL

Intex Development Co., Ltd.
9th Floor, Everbright Centre,
108 Gloucester Road, Wanchai,
Hong Kong
Tel: (852) 2827-0000
Fax: (852) 2311-8200
E-mail: info@intexdevelopment.com
Web: www.intexdevelopment.com

USA

Intex Recreation Corp.
P.O. Box 1440,
Long Beach, CA 90801-1440, USA
Tel: (310) 549-5400
Fax: (310) 513-6905
Web: www.intexcorp.com

EUROPE

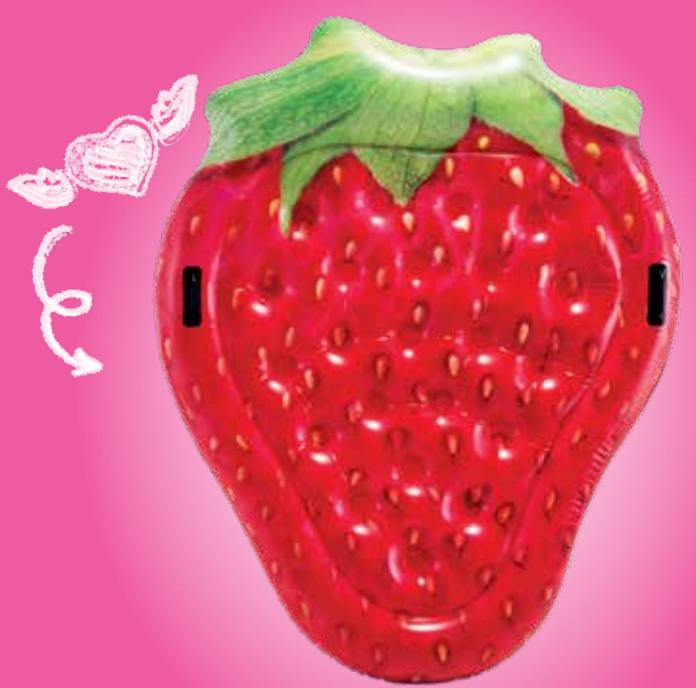
Intex Trading B.V.
Venneveld 9,
4705 RR Roosendaal,
The Netherlands
Tel: (31) 165-593920
Fax: (31) 165-593969
E-mail: info@intexcorp.nl
Web: www.intexcorp.nl

Intex Trading s.r.o.
Benešovská 23
101 00 Praha 10
Czech Republic
Tel: (420) 267 312 645
Fax: (420) 267 312 552
E-mail: info@intexcorp.cz
Web: www.intexdevelopment.com

Unitex Service (France) S.A.S.
Z.A. de Milleure Bois du Ban - N°4
71480 LE MIROIR, France
Tel: (33) 385 75 64 64
Fax: (33) 385 75 64 65
E-mail: info@intexcorp.com.fr
Web: www.intex.fr



©2018 Intex Marketing Ltd. - Intex Development Co., Ltd. - Intex Recreation Corp.
All rights reserved. Printed in China.
*** Trademarks used in some countries of the world under license from Intex Marketing Ltd. to Intex Development Co., Ltd., G.P.O Box 28829, Hong Kong, and Intex Recreation Corp., P.O. Box 1440, Long Beach, CA 90801.



2019



Spice up your summer pool party with the Sand & Summer Collection by Intex. Perfect for your inner beach bunny, our collection features the coolest must-have novelty inflatables. No matter the summer occasion, we are sure to have the style for you. Whether you're at the pool or the beach, we are committed to making sure you have the summer you deserve, a summer of fun, style and luxury. ❤️❤️





Hello in SUMMER

NEW
57500NP/EP
FLAMINGO DRINK HOLDER
• 13" x 10" (33cm x 25cm)
• 8ga (0.20mm) vinyl
• Floating flamingo drink holder
• 3pcs per set
• Shelf box
12 ea, 5.2 lb (2.4 kg)



AGE 3+

NEW
57506NP/EP
UNICORN DRINK HOLDER
• 16" x 8" (41cm x 20cm)
• 8ga (0.20mm) vinyl
• Floating unicorn drink holder
• 3pcs per set
• Shelf box
12 ea, 4.7 lb (2.1 kg)



AGE 3+



NEW
57505NP/EP
PINEAPPLE DRINK HOLDER
• 38" x 23" (97cm x 58cm)
• 10ga (0.25mm) vinyl
• Floating pineapple drink holder
• Holds up to 6 drinks
• Repair patch
• Shelf box
12 ea, 10.5 lb (4.8 kg)

AGE 6+

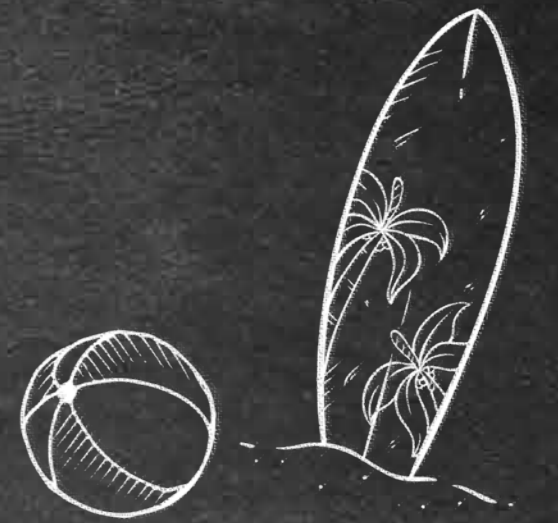


56266NP/EP
PINEAPPLE TUBE
• 46" x 34" (1.17m x 86cm)
• 9ga (0.23mm) vinyl
• Pineapple fruit design
• Repair patch
• Shelf box
12 ea, 12.0 lb (5.5 kg)

AGE 9+



58770EU/EP
CUPCAKE MAT
• 56" x 53" (1.42m x 1.35m)
• 11ga (0.28mm) vinyl
• Cupcake design
• Repair patch
• Shelf box
6 ea, 19.1 lb (8.7 kg)



56265NP/EP
DONUT TUBE
• 42" x 39" (1.07m x 99cm)
• 10ga (0.25mm) vinyl
• Fun donut design
• Repair patch
• Shelf box
12 ea, 15.5 lb (7.0 kg)



56265NP AGE 9+

56265EP AGE 14+

56263NP/EP
RAINBOW SPRINKLE DONUT TUBE
• 45" (1.14m)
• 10ga (0.25mm) vinyl
• Fun donut design
• Repair patch
• Shelf box
12 ea, 18.1 lb (8.2 kg)

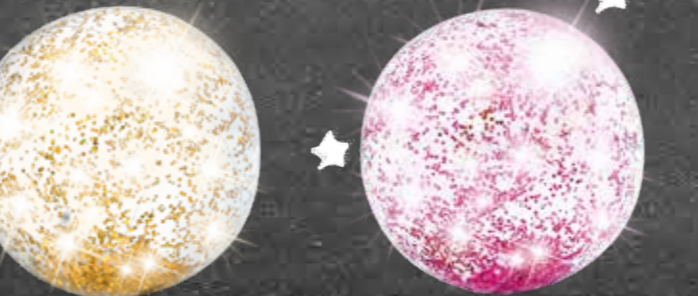
56263NP AGE 9+

56263EP AGE 14+



NEW
58070NP/EP
TRANSPARENT GLITTER BEACH BALLS
• 28" (71cm)
• 9ga (0.23mm) vinyl
• Gold / Pink glitter filled
• Repair patch
• Shelf box
12 ea, asst, 8.3 lb (3.8 kg)

AGE 3+



NEW
58075NP/EP
WATERMELON BALL
• 42" (1.07cm)
• 9ga (0.23mm) vinyl
• Realistic watermelon design
• Repair patch
• Shelf box
12 ea, 14.3 lb (6.5 kg)

AGE 3+

PHOTO REAL

NEW
56274NP/EP
TRANSPARENT GLITTER TUBES
• 47" (1.19m)
• 12ga (0.30mm) vinyl
• Gold / Pink glitter filled
• Repair patch
• Shelf box
6 ea, asst, 12.4 lb (5.7 kg)

56274NP AGE 9+

56274EP AGE 14+



58753EU/EP
LOLLOPOP FLOAT
• 82" x 53" (2.08m x 1.35m)
• 12ga (0.30mm) vinyl
• Realistic lollipop design
• Repair patch
• Shelf box
6 ea, 26.7 lb (12.2 kg)

PHOTO REAL

58777EU/EP
BERRY PINK SPLASH FLOAT
• 78" x 42" (1.98m x 1.07m)
• 12ga (0.30mm) vinyl
• Frozen drink design
• Repair patch
• Shelf box
6 ea, 21.1 lb (9.6 kg)



NEW
58788EU/EP
INFUSED SPARKLING WATER MAT
• 70" x 36" (1.78m x 91cm)
• 11ga (0.28mm) vinyl
• Realistic Printing
• Repair patch
• Shelf box
6 ea, 20.4 lb (9.3 kg)

PHOTO REAL



SUMMER REFRESHMENT



58751EU/EP
**WATERMELON
POPSICLE FLOAT**
• 75" x 30" (1.91m x 76cm)
• 11ga (0.28mm) vinyl
• Realistic watermelon design
• Repair patch
• Shelf box
6 ea, 14.8 lb (6.7 kg)



58766EU/EP
**COOL ME DOWN
POPSICLE FLOAT**
• 75" x 30" (1.91m x 76cm)
• 11ga (0.28mm) vinyl
• Realistic colorful popsicle design
• Repair patch
• Shelf box
6 ea, 14.8 lb (6.7 kg)



58762EU/EP
ICE CREAM MAT
• 88" x 42" (2.24m x 1.07m)
• 12ga (0.30mm) vinyl
• Ice-cream design
• Repair patch
• Shelf box
6 ea, 21.2 lb (9.6 kg)

ice cream



58752EU/EP
PIZZA SLICE MAT
• 69" x 57" (1.75m x 1.45m)
• 12ga (0.30mm) vinyl
• Realistic pizza design
• 4 easy-to-use connectors
• U.S. Patent No. D759,180
• Repair patch
• Shelf box
6 ea, 25.6 lb (11.7 kg)



NEW
58771EU/EP
HOTDOG MAT
• 71" x 35" (1.80m x 89cm)
• 11ga (0.28mm) vinyl
• Realistic Printing
• 2 heavy duty handles
• Repair patch
• Shelf box
6 ea, 19.9 lb (9.1 kg)



DELICIOUS

YUMMY



NEW
58780EU/EP
HAMBURGER ISLAND
• 57" x 56" (1.45m x 1.42m)
• 11ga (0.28mm) vinyl
• Realistic Printing
• 2 heavy duty handles
• Repair patch
• Shelf box
6 ea, 27.1 lb (12.3 kg)



Crispy



58776EU/EP
POTATO CHIPS FLOAT
• 70" x 55" (1.78m x 1.40m)
• 12ga (0.30mm) vinyl
• Potato chip bag design
• Repair patch
• Shelf box
6 ea, 31.3 lb (14.2 kg)



58775EU/EP
FRENCH FRIES FLOAT
• 69" x 52" (1.75m x 1.32m)
• 12ga (0.30mm) vinyl
• French fries design
• Repair patch
• Shelf box
6 ea, 25.9 lb (11.8 kg)

all you need

NEW
58779EU/EP
POPCORN MAT
• 70" x 49" (1.78m x 1.24m)
• 12ga (0.30mm) vinyl
• Realistic Printing
• 2 heavy duty handles
• Repair patch
• Shelf box
4 ea, 18.0 lb (8.2 kg)



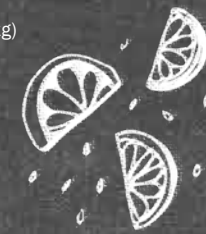
juicy



- 56283EU/EP
WATERMELON ISLAND
- 72" x 9" (1.83m x 23cm) inflated
 - 12ga (0.30mm) vinyl
 - Heavy duty grab rope
 - Refreshing design
 - Repair patch
 - Shelf box
 - 4 ea, 31.6 lb (14.4 kg)



- 58763EU/EP
ORANGE SLICE MAT
- 70" x 33½" (1.78m x 85cm)
 - 11ga (0.28mm) vinyl
 - Realistic orange fruit design
 - Repair patch
 - Shelf box
 - 6 ea, 16.8 lb (7.6 kg)



- 58761EU/EP
PINEAPPLE MAT
- 85" x 49" (2.16m x 1.24m)
 - 12ga (0.30mm) vinyl
 - Pineapple design
 - Repair patch
 - Shelf box
 - 6 ea, 30.1 lb (13.7 kg)



LOVE



Stay Cool

NEW

- 58781EU/EP
STRAWBERRY ISLAND
- 66" x 56" (1.68m x 1.42m)
 - 12ga (0.30mm) vinyl
 - Realistic strawberry design
 - 2 heavy duty handles
 - Repair patch
 - Shelf box
 - 4 ea, 18.0 lb (8.2 kg)



NEW

- 58789EU/EP
CANDY HEART ISLAND
- 57" x 56" (1.45m x 1.42m)
 - 11ga (0.28mm) vinyl
 - Realistic Printing
 - 1 cup holder
 - Repair patch
 - Shelf box
 - 6 ea, 23.1 lb (10.5 kg)



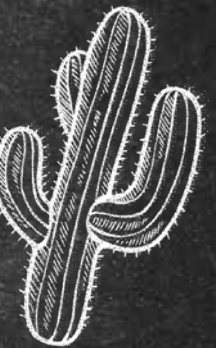
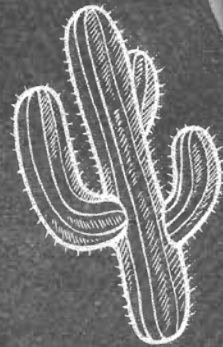
- 58764EU/EP
KIWI SLICE MAT
- 70" x 33½" (1.78m x 85cm)
 - 11ga (0.28mm) vinyl
 - Realistic kiwi fruit design
 - Repair patch
 - Shelf box
 - 6 ea, 16.8 lb (7.6 kg)



TAME THE BULL



WILD ADVENTURE



56280EU/EP

INFLATABULL™

- 94" L x 77" W x 32" H (2.39m x 1.96m x 81cm) inflated
- 18ga (0.45mm) vinyl
- 3 air chambers
- 5 heavy duty handles to hold on to
- Outer ring to ensure balance and safety
- Repair patch
- Shelf box
- 2 ea, 29.7 lb (13.5 kg)

AGE 9+



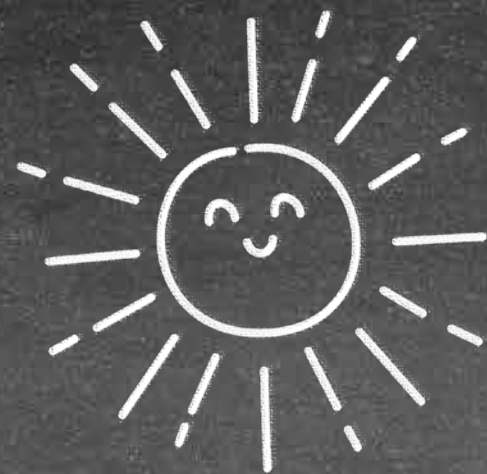
INFLATABULL™ used under license from David Dial.



©The Professional Bull Riders & IMG College 1994-2018



Beach Vibes



NEW Item

58772EU/EP
INSPIRATIONAL MAT

- 70" x 33" (1.78m x 84cm)
- 11ga (0.28mm) vinyl
- Repair patch
- Shelf box
- 6 ea, asst, 19.6 lb (8.9 kg)



57254EU/EP

COOL GUY ISLAND

- 68" x 10½" (1.73m x 27cm) inflated
- 12ga (0.30mm) vinyl
- All-around grab rope
- Repair patch
- Shelf box
- 4 ea, 26.6 lb (12.1 kg)



meow

NEW Item

58784EU/EP
CAT FACE ISLAND

- 58" x 53" (1.47m x 1.35m)
- 11ga (0.28mm) vinyl
- Realistic Printing
- 2 heavy duty handles
- Repair patch
- Shelf box
- 6 ea, 23.2 lb (10.5 kg)



NEW Item

58785EU/EP
PUG FACE ISLAND

- 68" x 51" (1.73m x 1.30m)
- 11ga (0.28mm) vinyl
- Realistic Printing
- 2 heavy duty handles
- Repair patch
- Shelf box
- 6 ea, 22.9 lb (10.4 kg)



★bling★

NEW Item

57257EU/EP
PINK SEASHELL ISLAND

- 70" L x 65" W x 9½" H (1.78m x 1.65m x 24cm) inflated
- 12ga (0.30mm) vinyl
- Luxurious pearlescent pink color
- Pink and iridescent glitter filled
- 2 heavy duty handles
- 2 cup holders
- Repair patch
- Shelf box
- 3 ea, 22.0 lb (10.0 kg)



NEW

58782EU/EP
PALM LEAF MAT

- 84" x 56" (2.13m x 1.42m)
- 12ga (0.30mm) vinyl
- Realistic Printing
- Repair patch
- Shelf box
- 4 ea, 18.8 lb (8.6 kg)



NEW

58786EU/EP
ANGEL WINGS MAT

- 99" x 63" (2.51m x 1.60m)
- 12ga (0.30mm) vinyl
- Realistic Printing
- 2 heavy duty handles
- Repair patch
- Shelf box
- 4 ea, 30.5 lb (13.9 kg)



57250EU/EP

PEACOCK ISLAND

- 76" L x 64" W x 37" H (1.93m x 1.63m x 94cm) inflated
- 13ga (0.33mm) vinyl
- Vibrant colors
- Peacock design
- 2 heavy duty handles
- 3 air chambers
- Repair patch
- Shelf box
- 4 ea, 32.5 lb (14.8 kg)

AGE 6+



NEW

58787EU/EP
PINK DAISY FLOWER MAT

- 56" x 56" (1.42m x 1.42m)
- 11ga (0.28mm) vinyl
- Realistic Printing
- 2 heavy duty handles
- Repair patch
- Shelf box
- 6 ea, 21.7 lb (9.9 kg)



NEW

58783EU/EP
RED ROSE MAT

- 54" x 52" (1.37m x 1.32m)
- 11ga (0.28mm) vinyl
- Realistic Printing
- 2 heavy duty handles
- Repair patch
- Shelf box
- 6 ea, 20.0 lb (9.1 kg)



THE GLOBAL ANGEL WINGS PROJECT

Colette Miller created the Global Angel Wings Project in 2012, in the streets of Los Angeles, the City of Angels. They were painted to remind humanity that we are the angels of this earth. They are human sized interactive public art, wings that people take photos with and thus become part of the work. The first pair was just street art but the response was natural, immediate, and spontaneous - from people of all sorts and backgrounds. Colette has painted wings globally - Kenya, Australia, Taiwan, France, Cuba, Juarez Mexico, and more, and many in the USA. Though some are commissioned and others gifted, the wings themselves are free to the world, never owned by anyone, not even Colette, though they are of her provenance and her work.



Make a Splash

57556NP/EP

YELLOW DUCK RIDE-ON

- 58" L x 58" W x 32" H (1.47m x 1.47m x 81cm) inflated
- 12ga (0.30mm) vinyl
- Great for riding, playing or lounging
- 2 heavy duty handles
- 2 air chambers
- Repair patch
- Shelf box
- 4 ea, 19.0 lb (8.6 kg)

57556NP **AGE 3+**

57556EP **AGE 14+**



56286EU/EP

MEGA YELLOW DUCK ISLAND

- 87" L x 87" W x 48" H (2.21m x 2.21m x 1.22m) inflated
- 14ga (0.35mm) vinyl
- Great for riding, playing or lounging
- 2 heavy duty handles
- 2 air chambers
- Repair patch
- Shelf box
- 2 ea, 24.6 lb (11.2 kg)



57557NP/EP

SWAN RIDE-ON

- 51" L x 40" W x 39" H (1.30m x 1.02m x 99cm) inflated
- 12ga (0.30mm) vinyl
- Great for riding, playing or lounging
- 2 heavy duty handles
- 2 air chambers
- Repair patch
- Shelf box
- 4 ea, 17.2 lb (7.8 kg)

57557NP **AGE 3+**

57557EP **AGE 14+**



56287EU/EP

MEGA SWAN ISLAND

- 76½" L x 60" W x 58" H (1.94m x 1.52m x 1.47m) inflated
- 14ga (0.35mm) vinyl
- Great for riding, playing or lounging
- 2 heavy duty handles
- 2 air chambers
- Repair patch
- Shelf box
- 2 ea, 22.5 lb (10.2 kg)



57561NP/EP

UNICORN RIDE-ON

- 79" L x 55" W x 38" H (2.01m x 1.40m x 97cm) inflated
- 12ga (0.30mm) vinyl
- Colorful unicorn
- 2 heavy duty handles
- 2 air chambers
- Repair patch
- Shelf box
- 4 ea, 17.3 lb (7.9 kg)

57561NP **AGE 3+**

57561EP **AGE 14+**



57281EU/EP

MEGA UNICORN ISLAND

- 113" L x 76" W x 65" H (2.87m x 1.93m x 1.65m) inflated
- 14ga (0.35mm) vinyl
- Colorful unicorn
- 2 heavy duty handles
- 2 air chambers
- Repair patch
- Shelf box
- 2 ea, 22.4 lb (10.2 kg)



56288EU/EP

MEGA FLAMINGO ISLAND

- 86" L x 83" W x 53½" H (2.18m x 2.11m x 1.36m) inflated
- 14ga (0.35mm) vinyl
- Great for riding, playing or lounging
- 2 heavy duty handles

- 2 air chambers
- Repair patch
- Shelf box
- 2 ea, 22.7 lb (10.3 kg)



57558NP/EP

FLAMINGO RIDE-ON

- 56" L x 54" W x 38" H (1.42m x 1.37m x 97cm) inflated
- 12ga (0.30mm) vinyl
- Great for riding, playing or lounging
- 2 heavy duty handles
- 2 air chambers
- Repair patch
- Shelf box
- 4 ea, 17.4 lb (7.9 kg)

57558NP **AGE 3+**

57558EP **AGE 14+**



NEW

57268EU/EP

UNICORN PARTY ISLAND

- 198" L x 132" W x 68" H (5.03m x 3.35m x 1.73m) inflated
- 20ga (0.50mm) vinyl
- Built-in cooler
- Mesh lounging area
- Detachable boarding platform
- One anchor bag with rope

- 4 cup holders
- 7 heavy duty handles
- Rope
- Repair patch
- Shelf box
- 1 ea, 49.2 lb (22.4 kg)



NEW

57267EU/EP

FLAMINGO PARTY ISLAND

- 166" L x 147" W x 73" H (4.22m x 3.73m x 1.85m) inflated
- 20ga (0.50mm) vinyl
- Built-in cooler
- Mesh lounging area
- Detachable boarding platform
- One anchor bag with rope

- 4 cup holders
- 7 heavy duty handles
- Rope
- Repair patch
- Shelf box
- 1 ea, 46.8 lb (21.3 kg)



Sweet Dreams

NEW
58639E (110-120V)
58640 (220-240V)
QUICK-FILL™ AC ELECTRIC PUMP

- 3 interconnecting nozzles
- Inflates and deflates
- Thermo Protector incorporated for safety
- TUV approved (110 - 120V)
- GS, CE approved (220 - 240V)
- Shelf box
- 6 ea, 8.8 lb (4.0 kg)

- Indoor Use
- 110-120V AC
220-240V AC
- Nozzles Fit
Any Valve Size



More than just patio furniture, this outdoor LED Ottoman provides fun lighting for any backyard! Take a seat and enjoy the elegant atmosphere you will create! This inflatable ottoman comes with a rechargeable battery that lasts up to 5 hours and you can choose between warm white or a smooth changing multi-colored setting to suit your mood!

NEW
68697/E
LED OTTOMAN
• 34" x 13" (86cm x 33cm) inflated
• Great for indoor or outdoor use
• IPX8 waterproof
• 5-hour auto shut-off
• Rechargeable 2500mAh battery

- 12 white LED lights, 2.4W
- 1 RGB LED light, 3W
- USB cord for charging (wall charger not included)
- Repair patch
- Shelf box
- 3 ea, 10.5 lb (4.8 kg)



Decorative, these new LED accent lights are the perfect addition to any backyard. These stylish, inflatable lights are easy to use. Each light comes with a hook for hanging and a rechargeable battery that lasts up to 5 hours. You can set it to either a warm white or to a smooth changing multi-color setting to suit your mood.

NEW
68693/E
LED FLOATING CRESCENT
• 53" L x 17" W x 35" H
(1.35m x 43cm x 89cm) inflated
• Great for indoor or outdoor use
• IPX8 waterproof
• 5-hour auto shut-off
• Rechargeable 2500mAh battery

- 12 white LED lights, 2.4W
- 1 RGB LED light, 3W
- USB cord for charging (wall charger not included)
- Repair patch
- Shelf box
- 3 ea, 8.7 lb (4.0 kg)

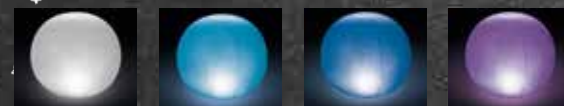


NEW
68695/E
LED FLOATING GLOBE
• 35" x 31" (89cm x 79m) inflated
• Great for indoor or outdoor use
• IPX8 waterproof
• 5-hour auto shut-off
• Rechargeable 2500mAh battery

- 12 white LED lights, 2.4W
- 1 RGB LED light, 3W
- USB cord for charging (wall charger not included)
- Repair patch
- Shelf box
- 3 ea, 12.1 lb (5.5 kg)



28693/E
LED POOL LIGHT GLOBE
• 9" x 8½" (23cm x 22cm) inflated
• 13ga (0.33mm) vinyl
• Illuminates in 4 different colors
• Two lighting modes; single color or color changing mode
• 2-hour auto shut-off
• Requires 3 AAA batteries
• Repair patch
• Shelf box
• 12 ea, 8.1 lb (3.7 kg)



28694/E
LED POOL LIGHT CUBE
• 9" L x 9" W x 8½" H
(23cm x 23cm x 22cm) inflated
• 13ga (0.33mm) vinyl
• Illuminates in 4 different colors
• Two lighting modes; single color or color changing mode
• 2-hour auto shut-off
• Requires 3 AAA batteries
• Repair patch
• Shelf box
• 12 ea, 8.2 lb (3.7 kg)

