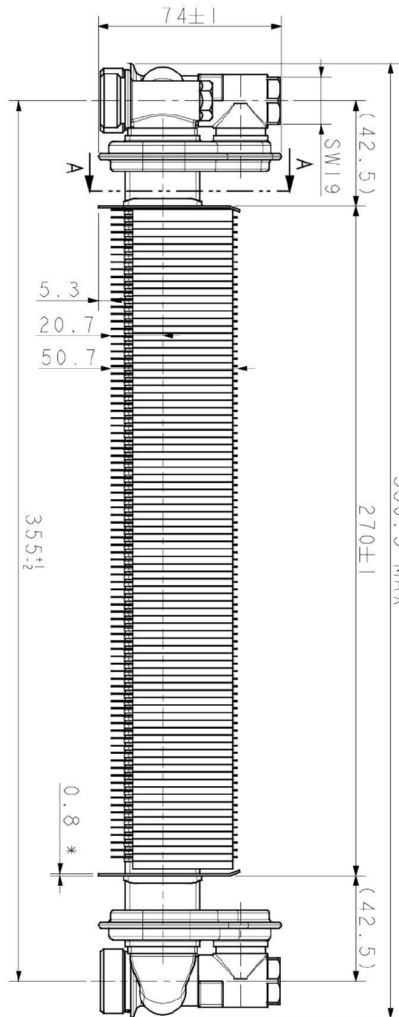


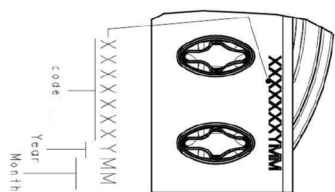
386.5 MAX

270±1

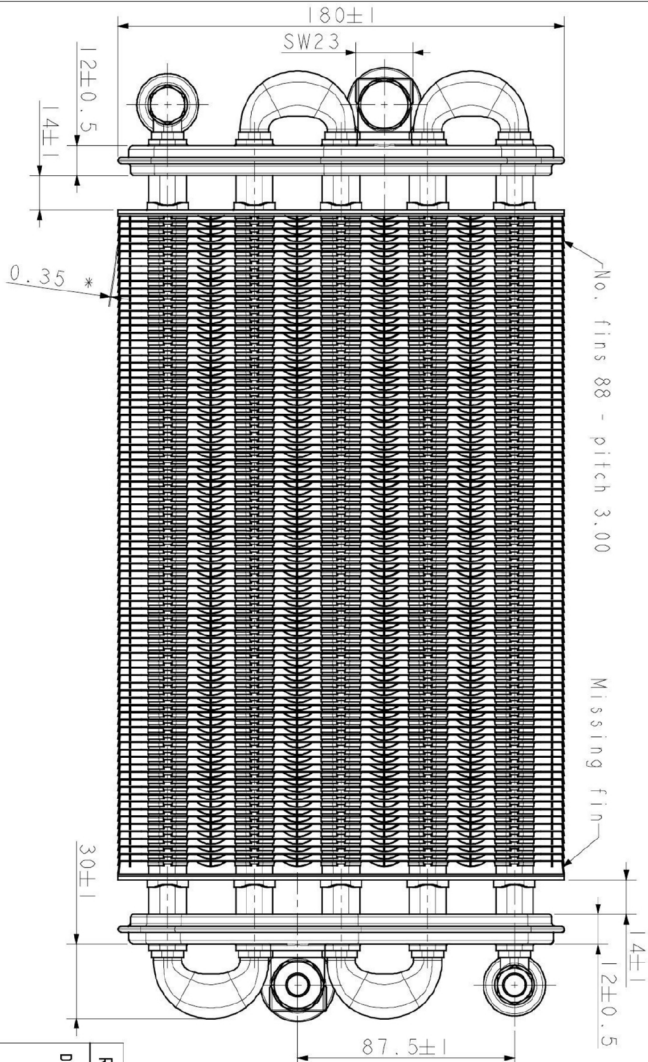
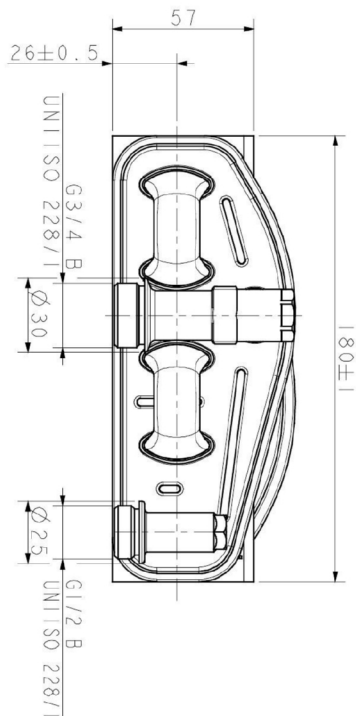
(42.5)



SECTION A-A



\* DIMENSIONS REFERRED TO THICKNESS BEFORE PAINTING THK. 0.35±0.02 and 0.8±0.03



PROPOSAL DRAWING

MATERIALS:

- Monifolds EN 1652 - Cu-DHP
- Primary tube EN 12451 - Cu-DHP
- Sanitary tube EN 1057 - Cu-DHP
- Central fins EN 1652 - Cu-DHP
- Primary connections EN 12165 CW617N
- Sanitary connections EN 12165 CW617N
- Sanitary elbows EN 1057 - Cu-DHP
- Finish Coated in HIGH TEMPERATURE ALUMINUM paint
- Phosphorus brazing alloy UNI EN 1044 Class CP

MAX PRESSURE:

Test 16 at 20 °C :

Working :

- Primary circuit 4.5 bar
- Sanitary circuit 15 bar
- Primary circuit 3 bar
- Sanitary circuit 10 bar
- MAX WORKING TEMPERATURES:
- Primary circuit 110 °C
- Sanitary circuit 100 °C

REV.(ISSUE)	DESCRIZIONE (DESCRIPTION)	DATA (DATE)	D/S.(DRW)
	DESCRIZIONE (DESCRIPTION)		
	GAS-WATER H. EX. "BITHERMAL"		
MATERIALE (MATERIAL)		SCALE (SCALE)	1:2
TOLL. GEN. (GEN.TOLL) ±0,3	FORMATO DISEGNO (DRAWING FORMAT) A3	DATA (DATE)	
		CLIENTE (CUSTOMER)	GC
		VERIFICATO (VERIFIED)	
		APPROVATO UT (T. D. APPROVAL)	
		SOSTITUITO DA	
		N° CODICE (CODE N°)	
		TIPO STATO	
		NUMERO	
		PF	PR